

This image shows the internal view of the device chassis, with components labeled 1 through 11. The components are:

- 1: Power supply unit (PSU) with a honeycomb mesh cover.
- 2: Cable management or connector assembly on the left side.
- 3: Top cover or ventilation grille.
- 4: Large metal heat sink or shield on the left side.
- 5: Cable management or connector assembly at the top.
- 6: Cable management or connector assembly in the center.
- 7: Cable management or connector assembly on the right.
- 8: Small electronic component or module on the right.
- 9: Right side panel or cover.
- 10: Main circuit board (PCB) with various components.
- 11: Bottom cover or base plate.



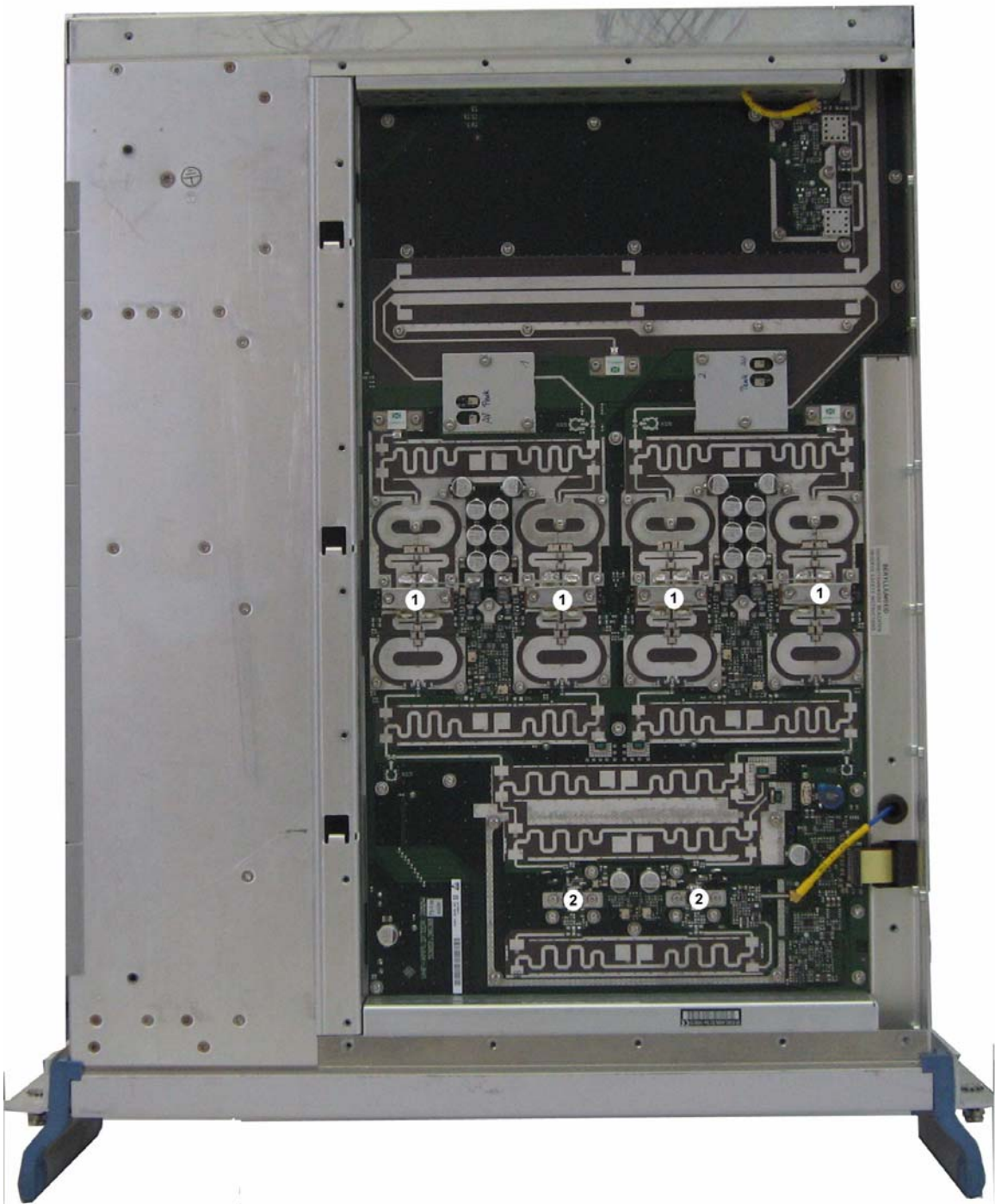
Pulling out the power amplifier

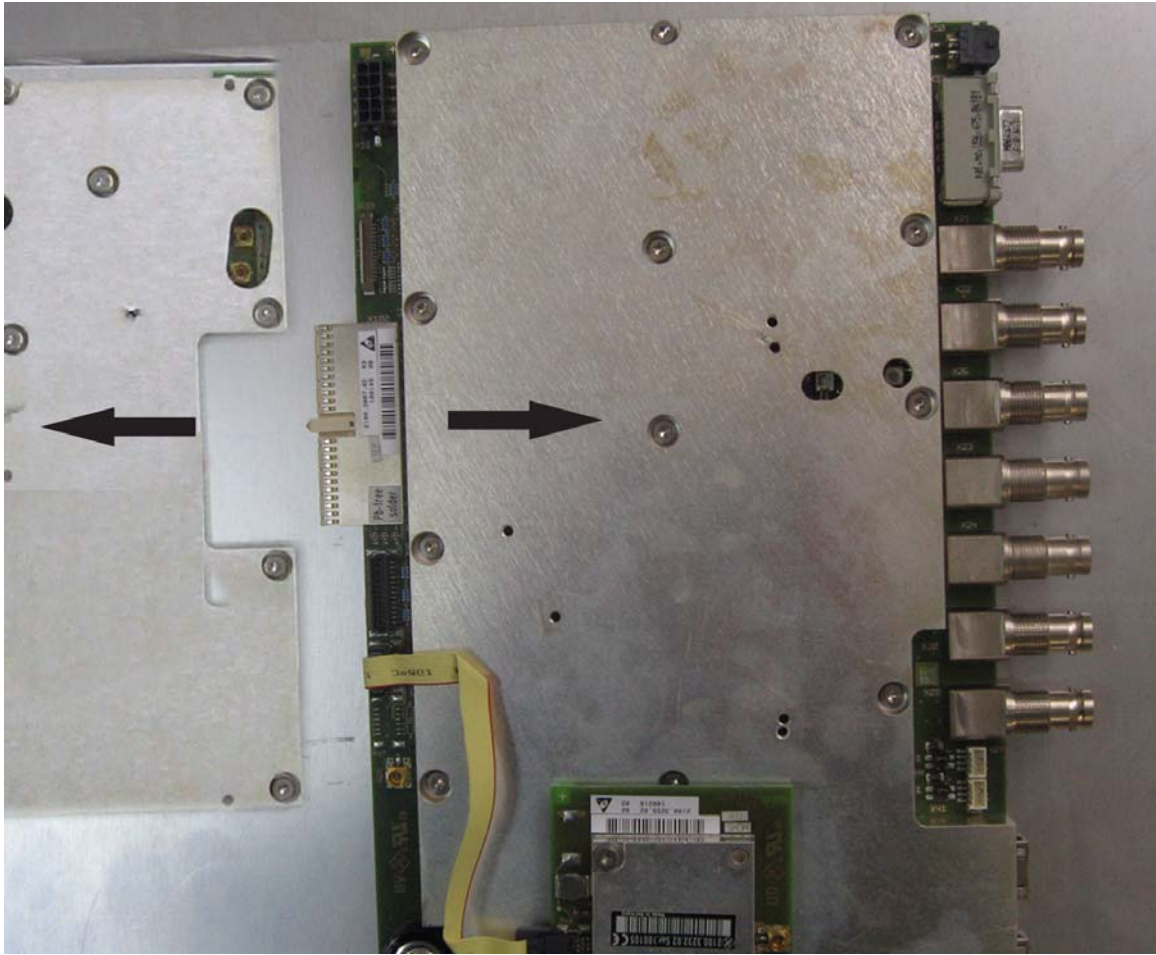


ADTV coder board

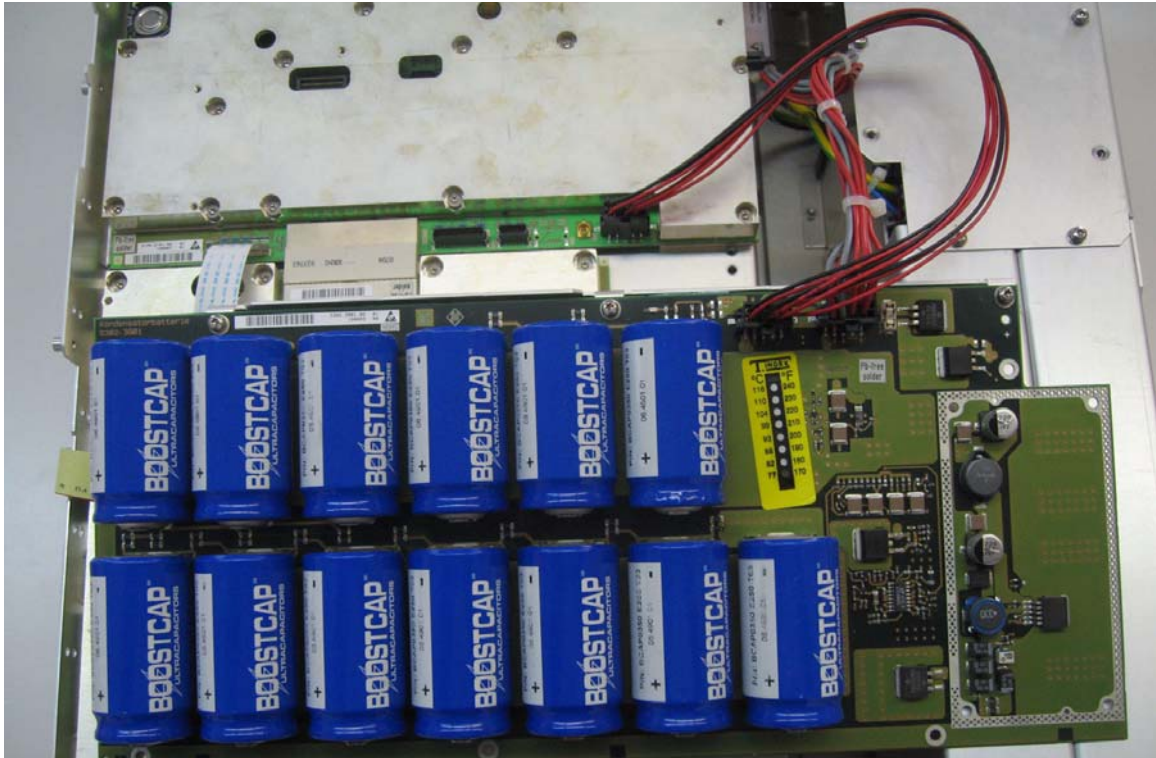






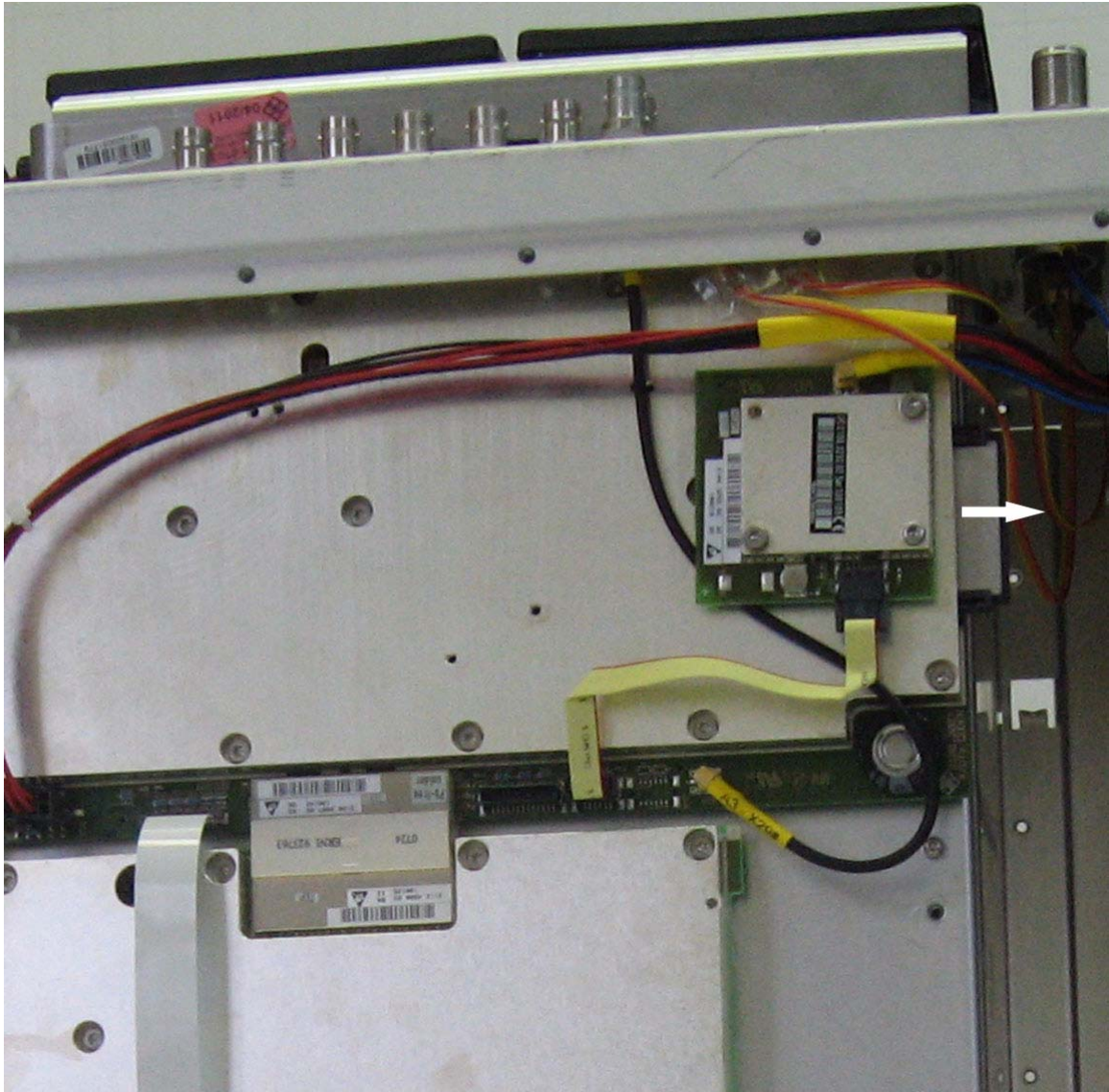


RF Board

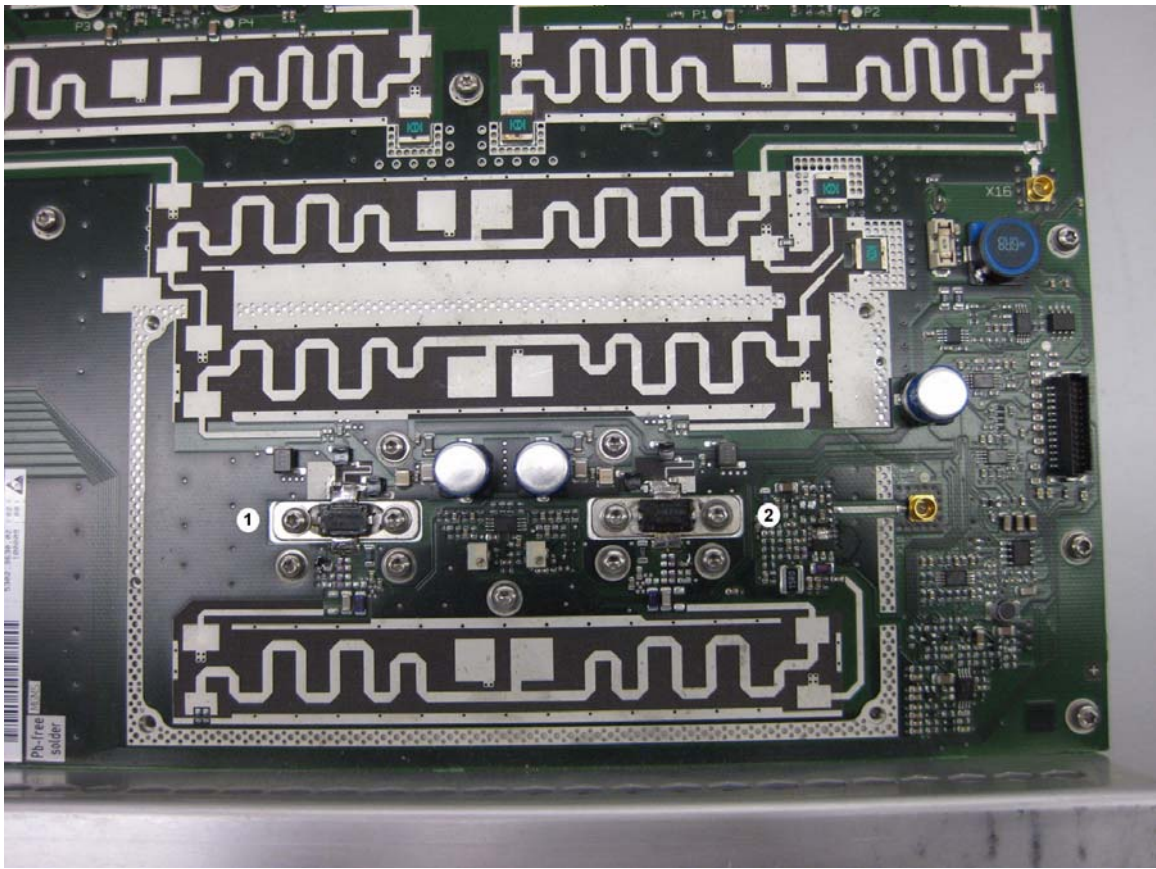


Capacitor batteries and cables

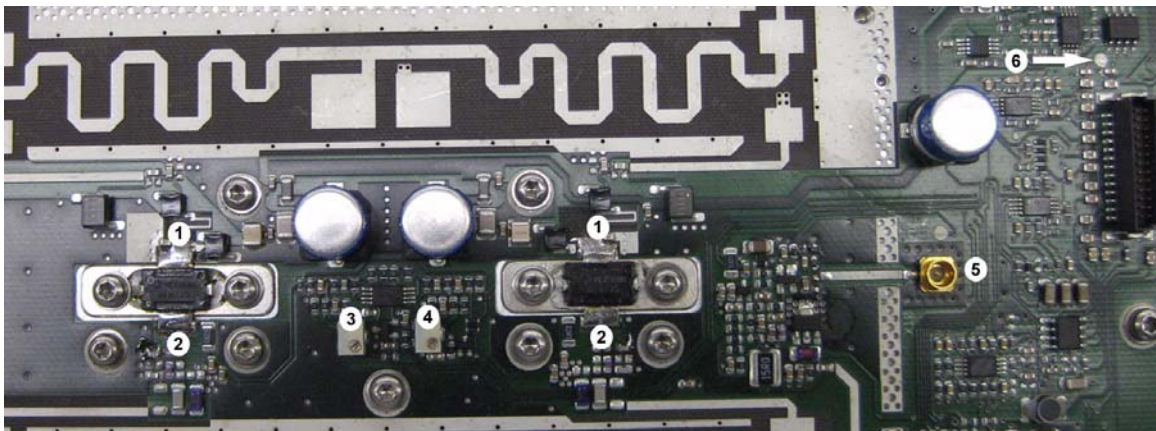




Compact flash card

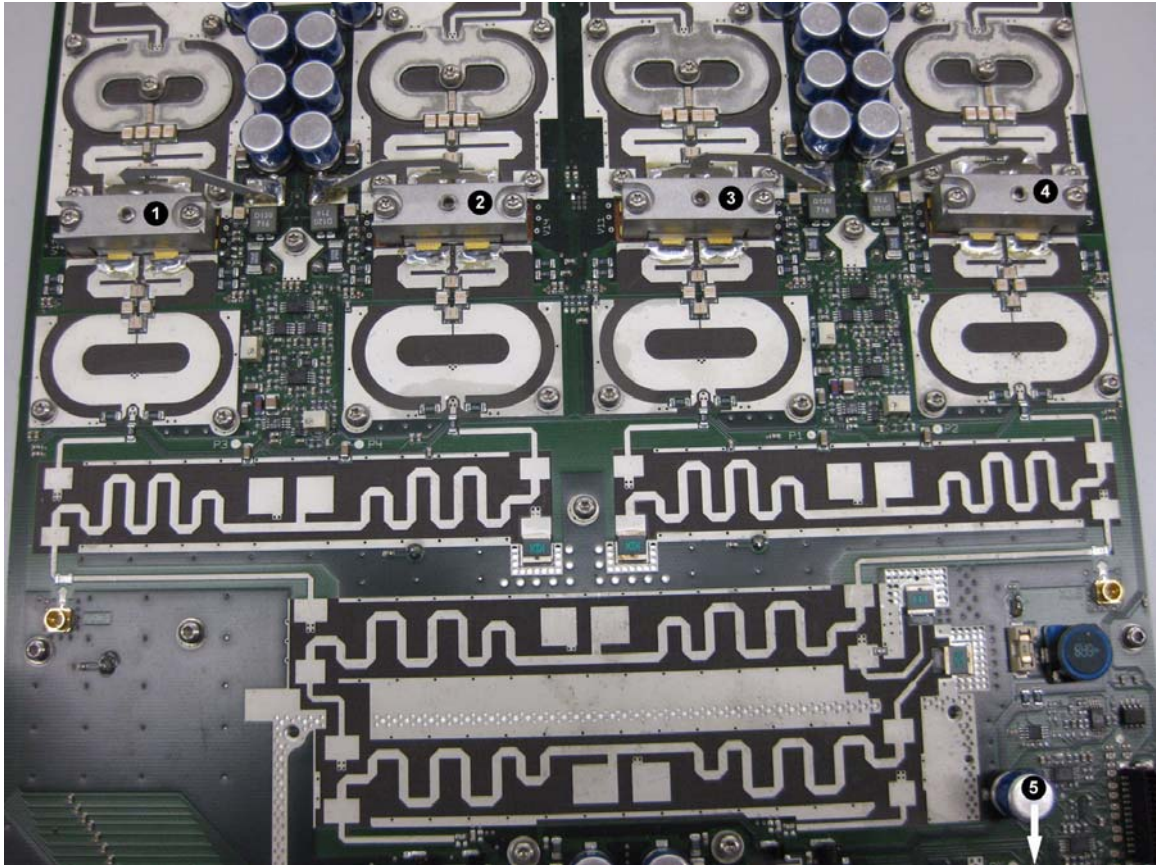


Transistors



Component test points





Output stage transistors