

# **NV8600 series Transmitter FCC Certification Application**

**CLASS 2 PERMISSIVE CHANGE APPLICATION EA129702**

**FOR**

**FCC ID: HFLNV8600FLO**

**TO ALLOW**

**USE OF ALTERNATE CHANNEL “MASK” FILTER**

---

## **MEASUREMENT REPORT**

---

**FOR**

**RADIO FREQUENCY SYSTEMS CHANNEL “MASK” FILTER**

**(PROPOSED FILTER FOR HFLNV8600FLO CLASS 2 PERMISSIVE CHANGE)**

Manufacturer: Radio Frequency Systems, Inc.  
200 Pondview Drive  
Meriden, CT 06450-7195

Model Number: 12PXXXW / PP318E3-RL

**19 February 2009**



**ROHDE & SCHWARZ**



# **RADIO FREQUENCY SYSTEMS**

**HANDBOOK No 49.52270**

**12PXXXW/PP318E3-RL  
FRAMED FILTER**

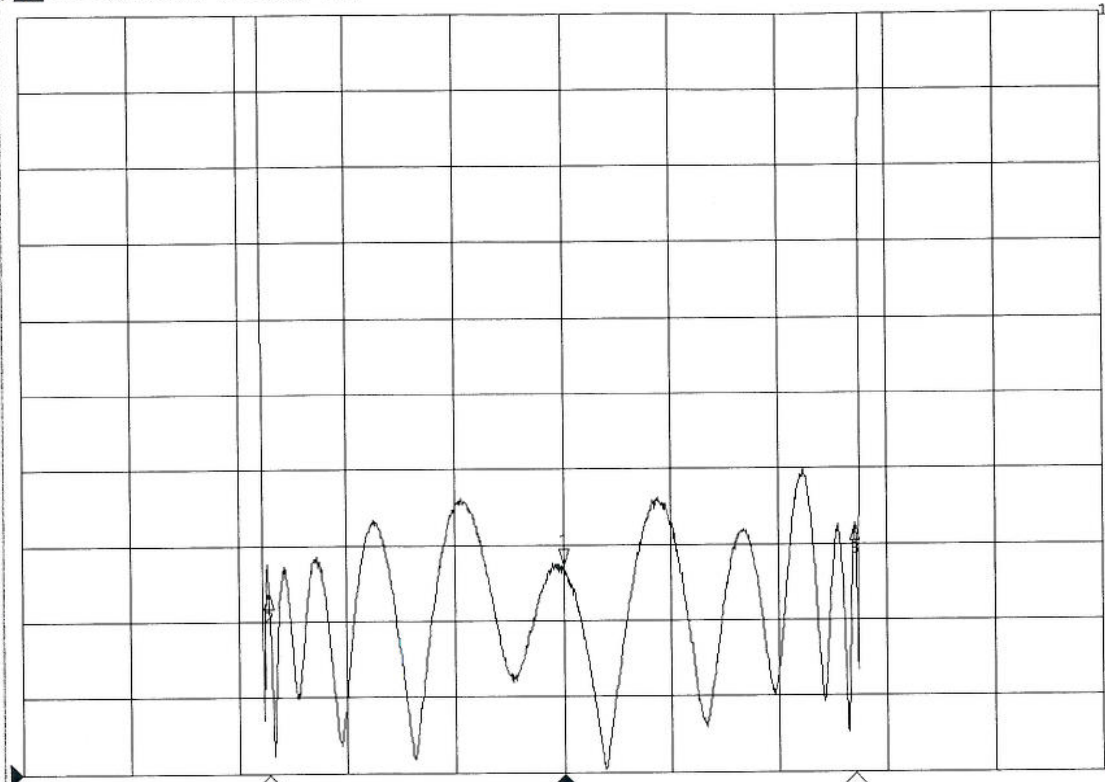
**SO 30947, SN 78733  
Ch US55 Fc 719 MHz**

12PXXXW/PP318E3-RL FRAMED FILTER

SECTION 7  
FACTORY TEST RESULTS

SN 78733 CH 55 BPF-1

▶ TRF1 S11 SWR 20.00m/ Ref 1.000 [F2]



Trace1 Markers

1: 719.000MHz  
1.054  
2: 716.290MHz  
1.048  
3: 721.710MHz  
1.065

1 Center 719 MHz

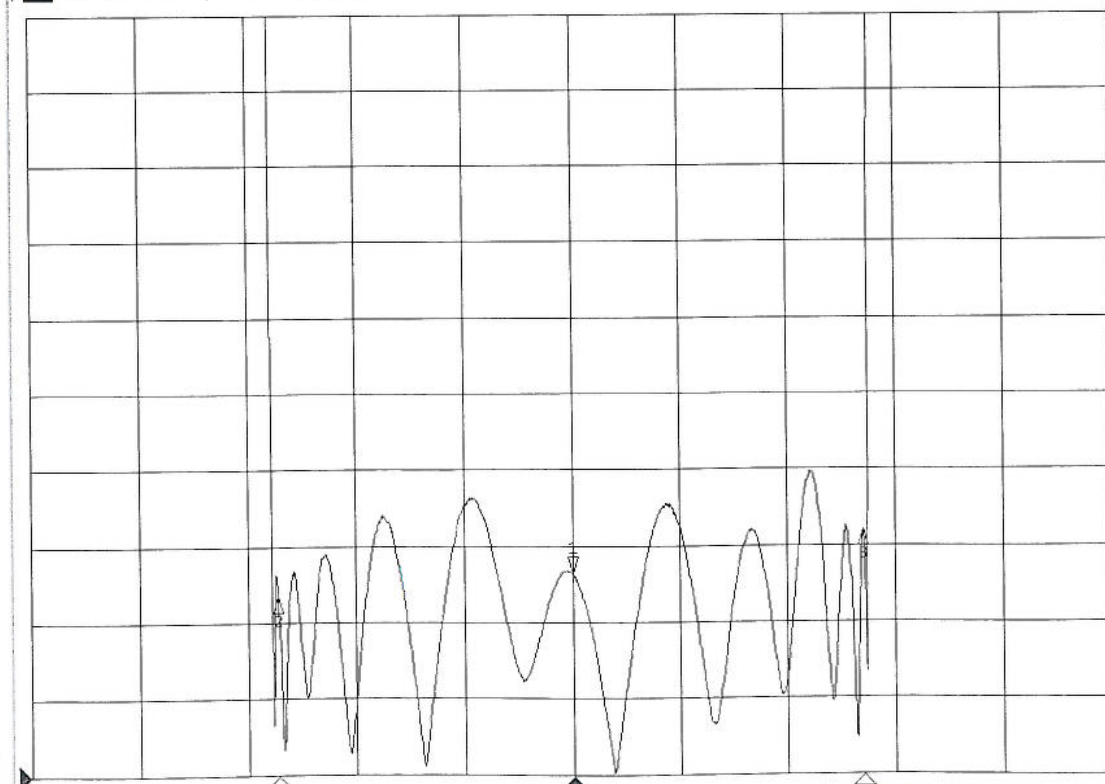
IFBW 70 kHz

Span 10 MHz

Meas Run ExtRef Svc 2009-01-21 14:27

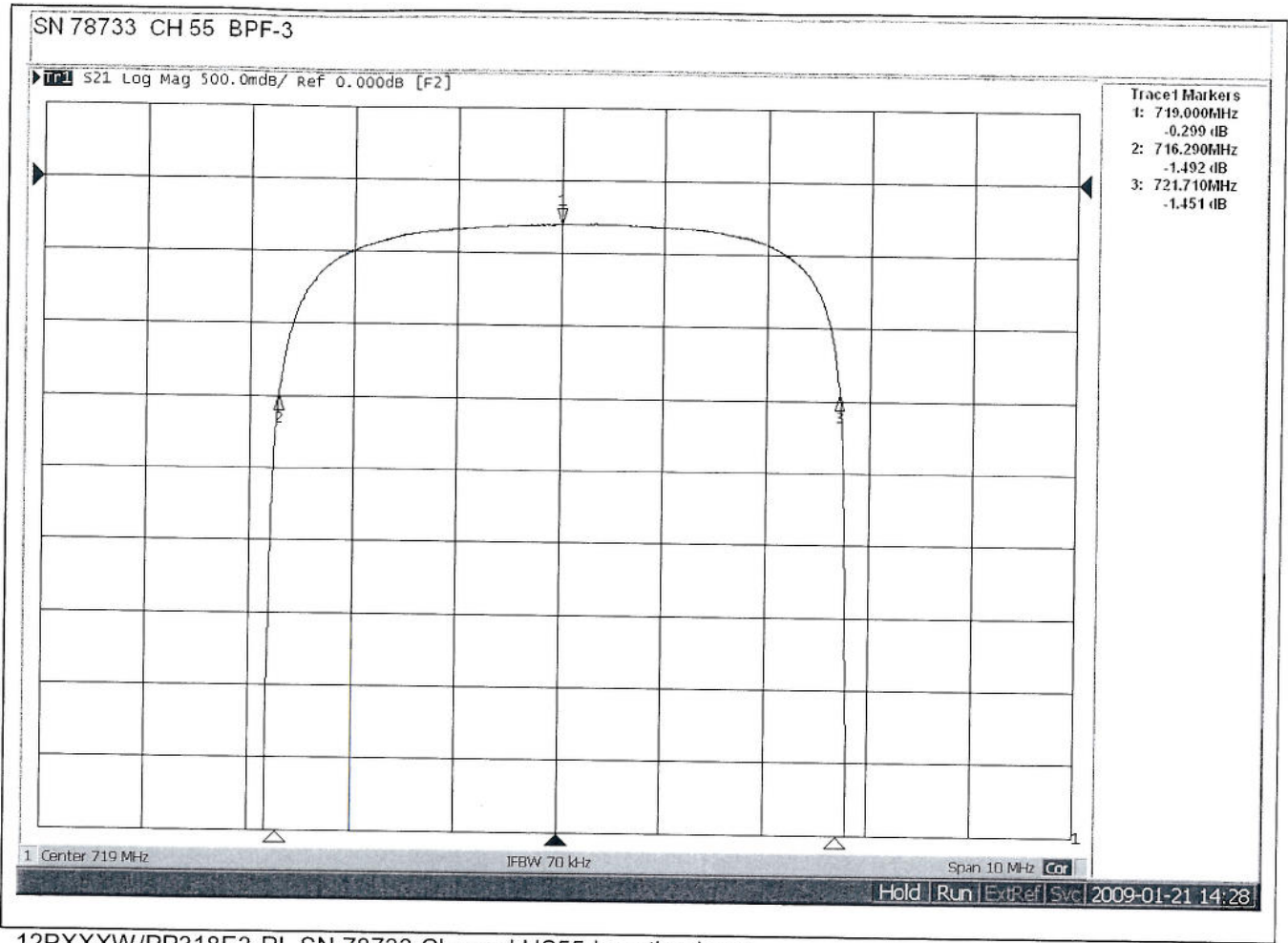
SN 78733 CH 55 BPF-2

▶ TRF1 S11 SWR 20.00m/ Ref 1.000 [F2]



Trace1 Markers

1: 719.000MHz  
1.053  
2: 716.290MHz  
1.047  
3: 721.710MHz  
1.064

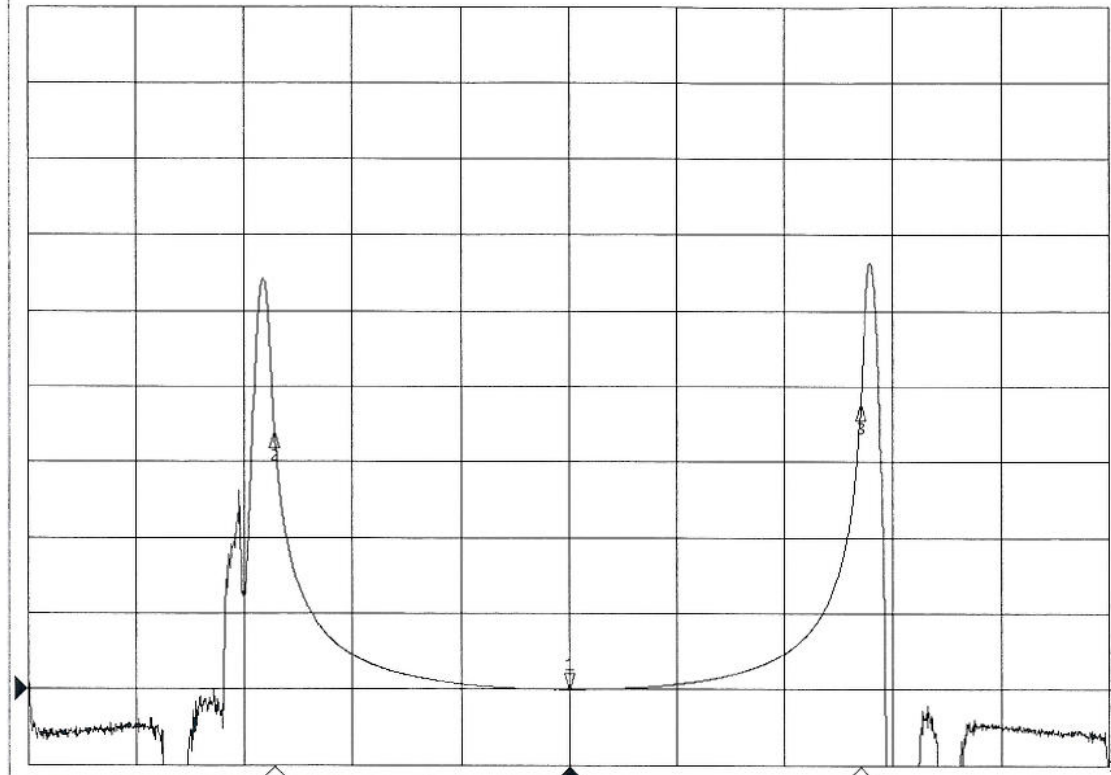


12PXXXW/PP318E3-RL SN 78733 Channel US55 Insertion Loss



SN 78733 CH 55 BPF-4

▶ [F2] S21 Delay 500.0ns/ Ref 384.1n\*s [F2 Smo]



Trace1 Markers  
1: 719.000MHz  
381.118 ns  
2: 716.290MHz  
2082.573 ns  
3: 721.710MHz  
2268.866 ns

1 Center 719 MHz

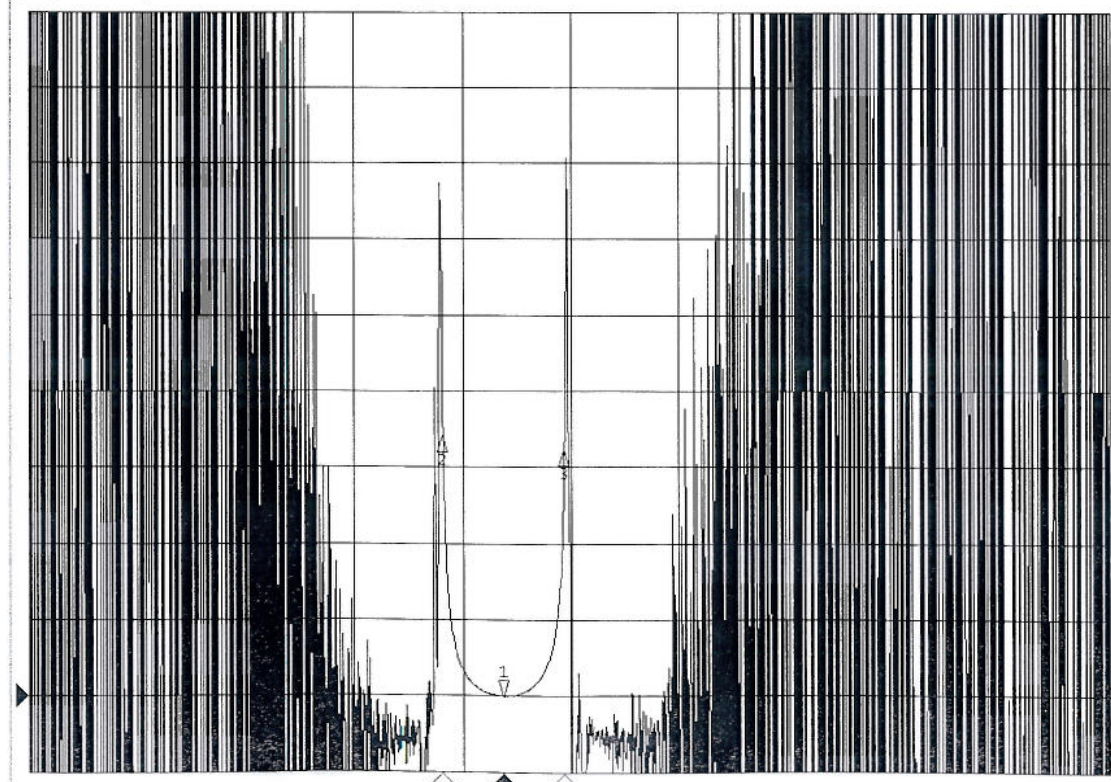
IFBW 70 kHz

Span 10 MHz 16/16 Cor I

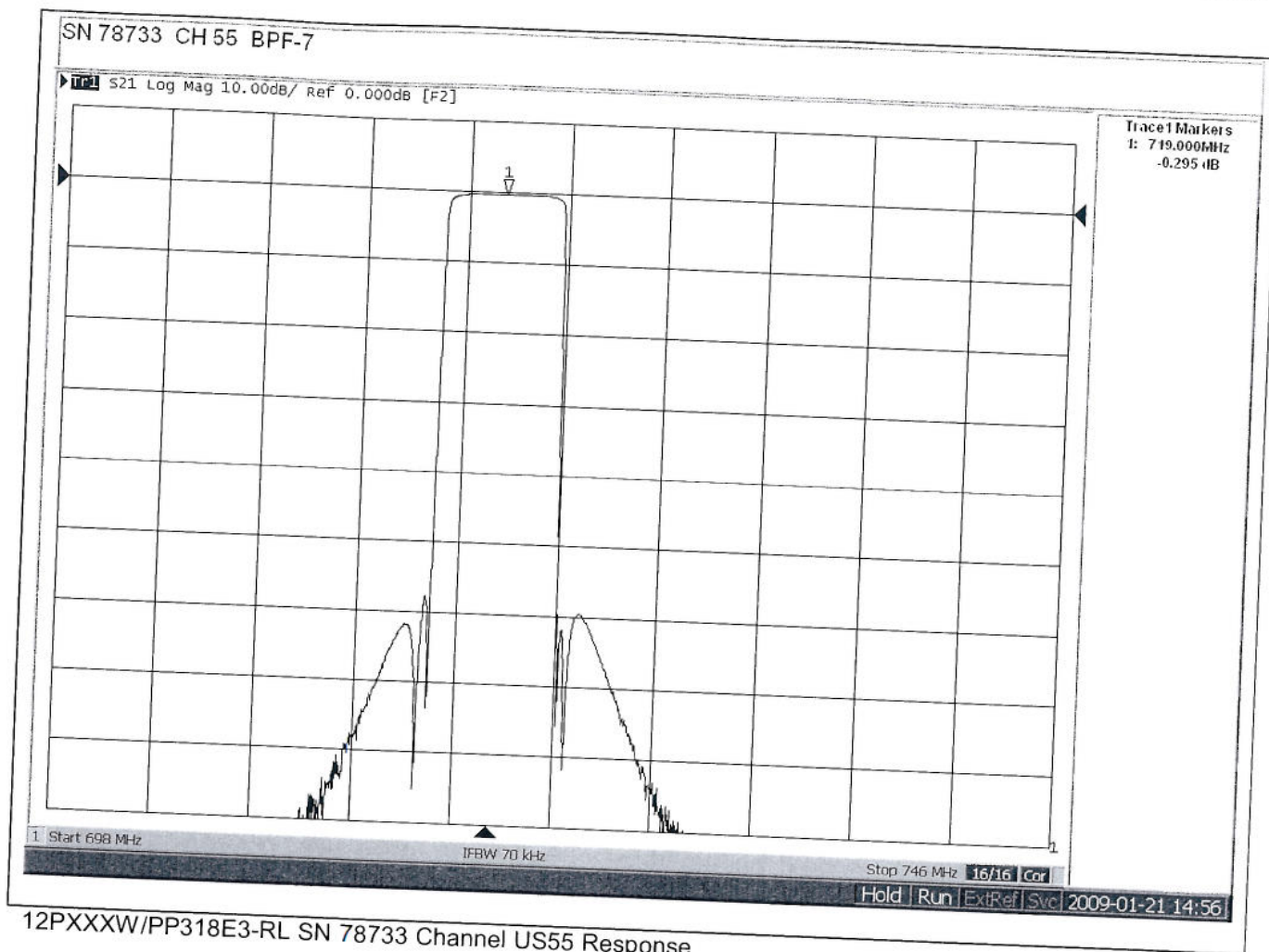
Meas Run ExtRef Svc 2009-01-21 14:30

SN 78733 CH 55 BPF-5

▶ [F2] S21 Delay 500.0ns/ Ref 382.6n\*s [F2]

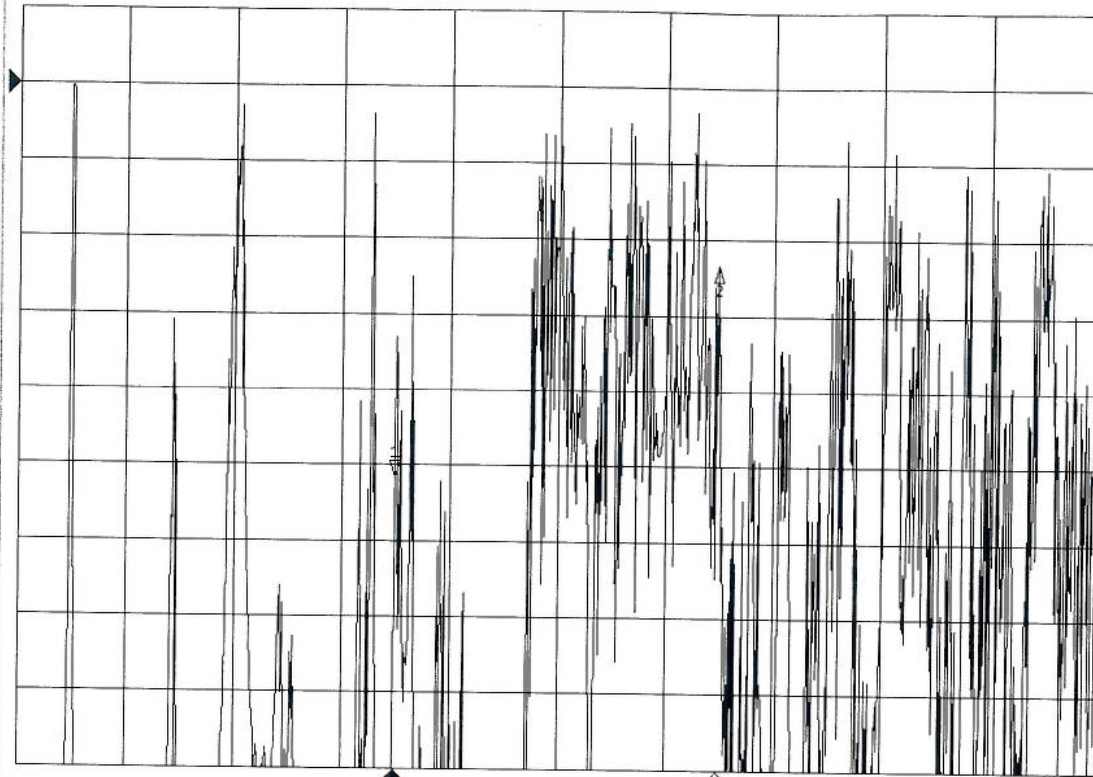


Trace1 Markers  
1: 719.000MHz  
380.025 ns  
2: 716.290MHz  
2093.425 ns  
3: 721.710MHz  
2003.188 ns



SN 78733 CH 55 BPF-8

▶ **Tr1** S21 Log Mag 10.00dB/ Ref 0.000dB [F2]



**Trace1 Markers**  
 1: 1.438GHz  
 -51.666 dB  
 2: 2.157GHz  
 -23.440 dB

1 Start 600 MHz

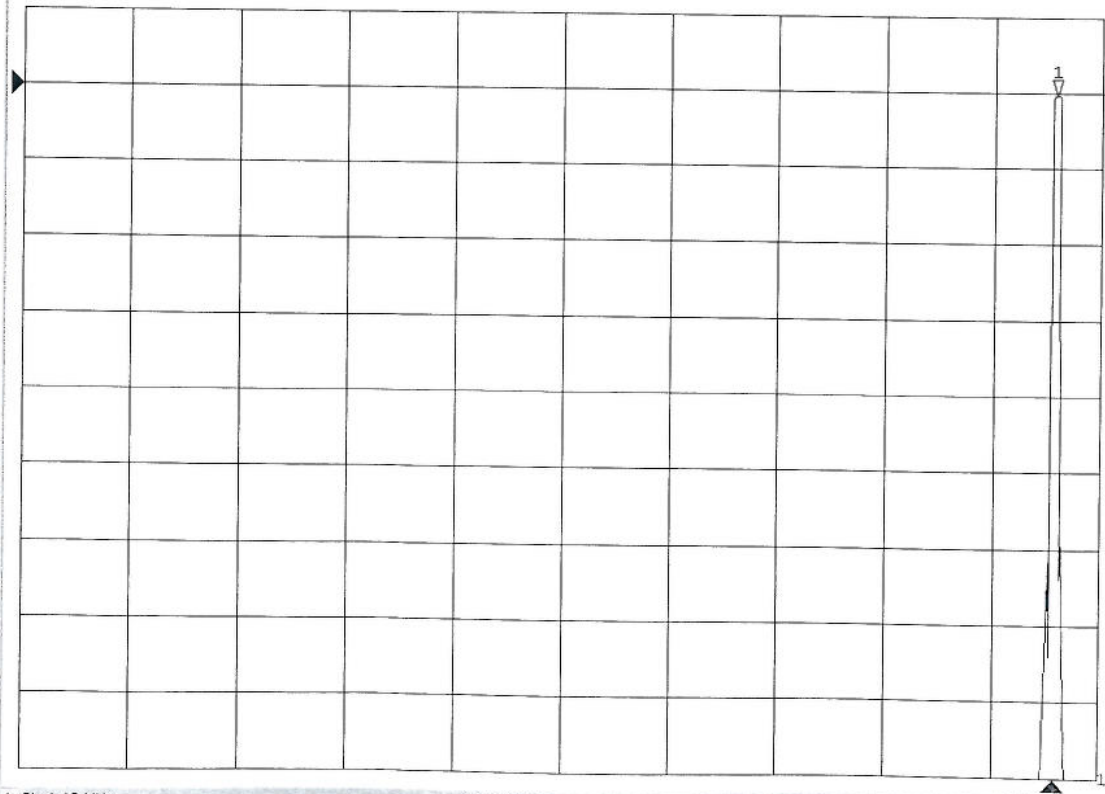
IFBW 70 kHz

Stop 3 GHz 16/16 Cor

Meas Run ExtRef Svc 2009-01-21 14:57

SN 78733 CH 55 BPF-9

▶ **Tr1** S21 Log Mag 10.00dB/ Ref 0.000dB [F2]



**Trace1 Markers**  
 1: 719.000MHz  
 -0.311 dB

1 CH55 10 MHz