

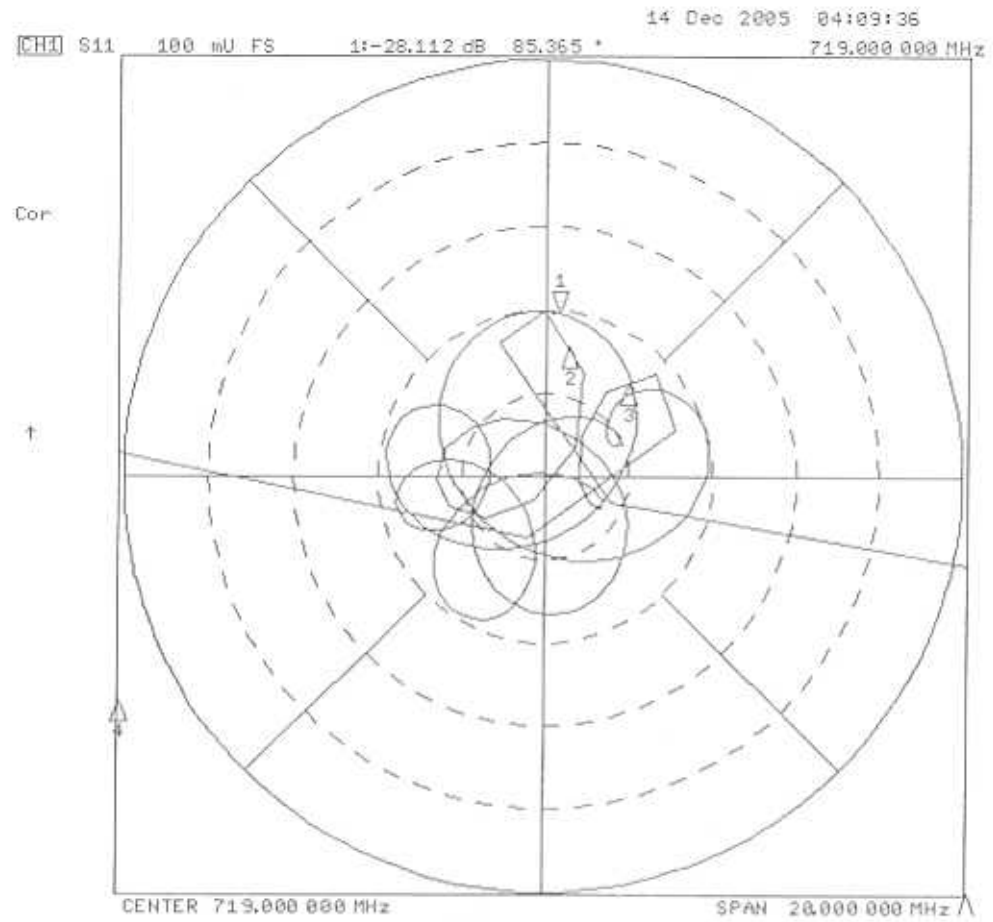
NETWORK ANALYZER MEASUREMENTS
FOR
MYAT 12-POLE CHANNEL “MASK” FILTER

DEMONSTRATING COMPLIANT WITH:
QUALCOMM MEDIAFLO SOURCE CONTROL DOCUMENT
CV90-T0824 REVISION A
FOR 12-POLE CHANNEL “MASK” FILTER

CONFIDENTIAL

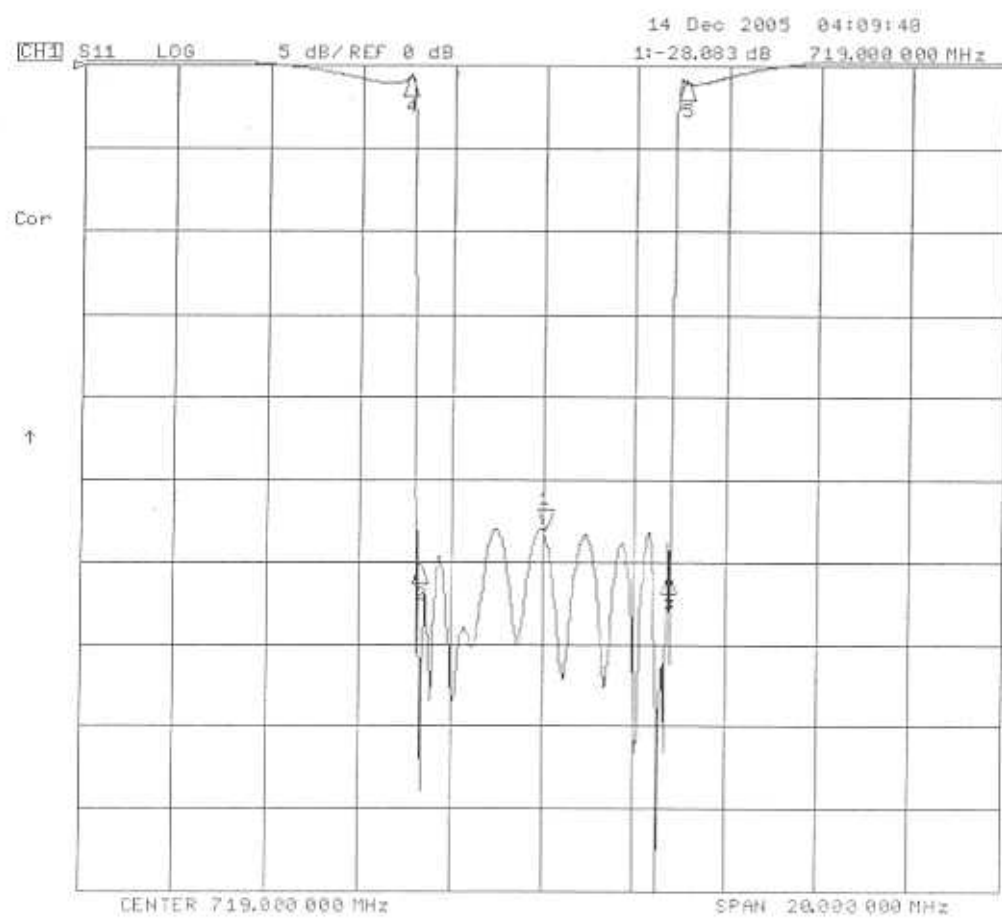


MEDIAFLO
CH55 FILTER



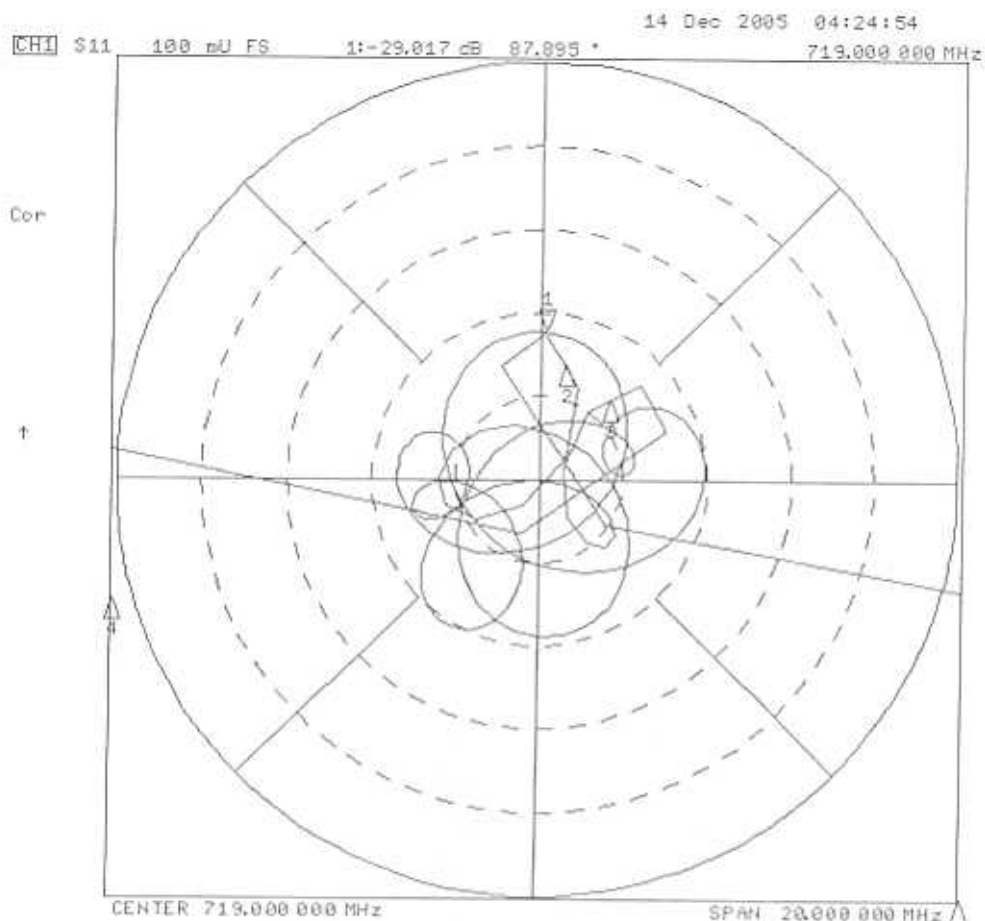
- CH1 Markers
- 2:-30.114 dB
79.828 °
716.290 MHz
 - 3:-30.604 dB
40.624 °
721.710 MHz
 - 4:-59.810 dB
-176.63 °
715.000 MHz
 - 5:-94.150 dB
-25.274 °
722.000 MHz

INPUT VSWR
(OUTPUT = ANT.)

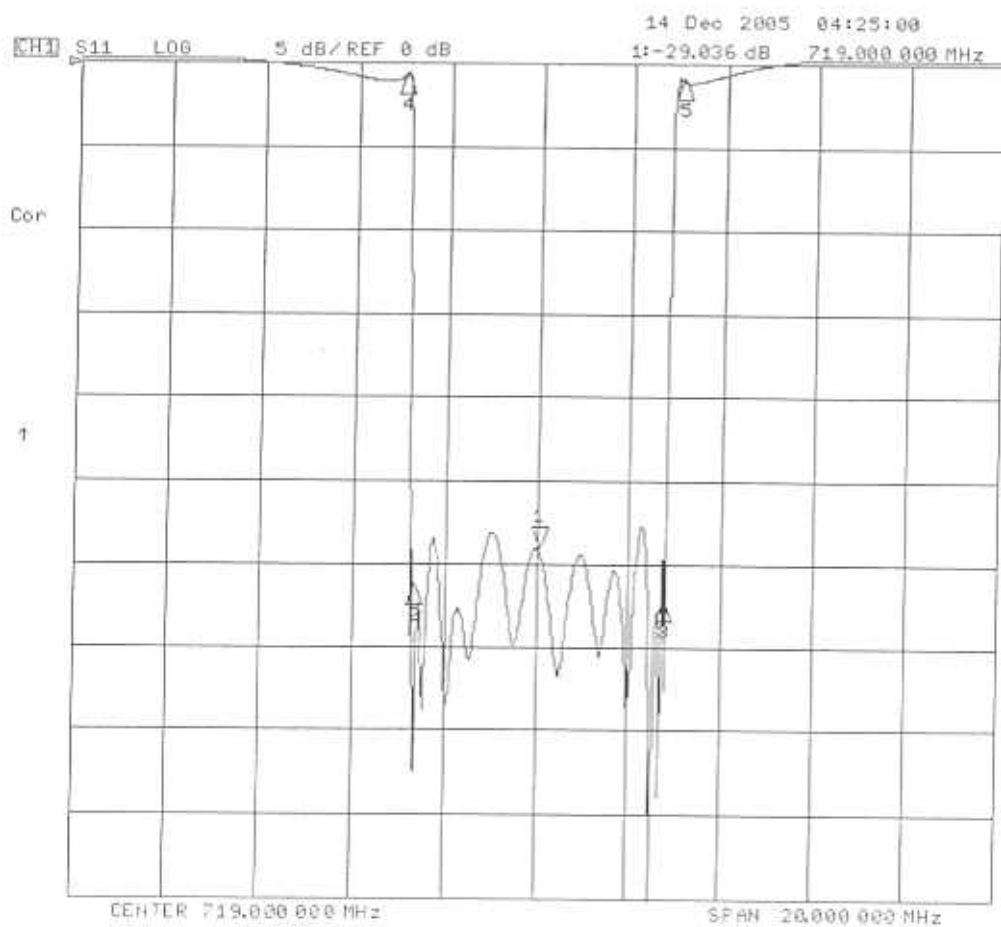


- CH1 Markers
- 2:-30.066 dB
716.290 MHz
 - 3:-30.654 dB
721.710 MHz
 - 4:-59.920 dB
716.000 MHz
 - 5:-94.000 dB
722.000 MHz

INPUT RETURN LOSS
(OUTPUT = ANT.)



INPUT VSUR
(OUTPUT = LOAD)

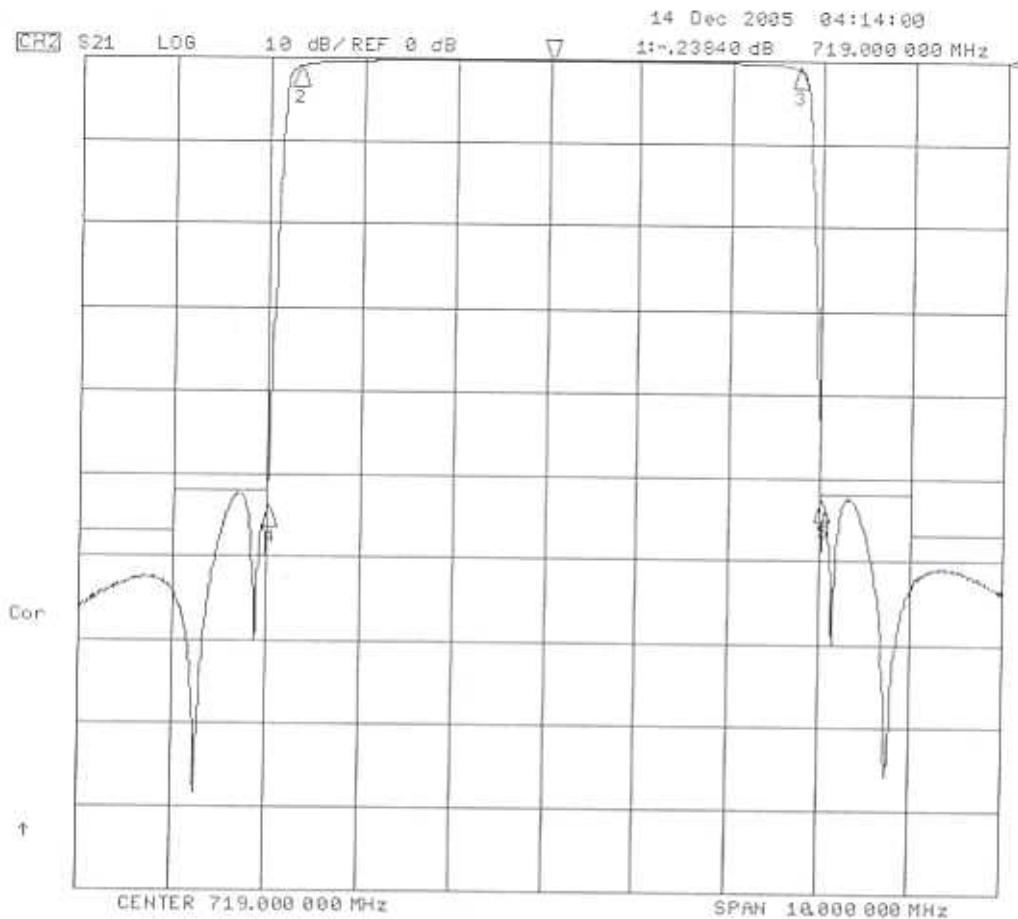


INPUT RETURN LOSS
(OUTPUT = LOAD)

2

1301

MEDIAFLO
CH55 FILTER



CH2 Markers

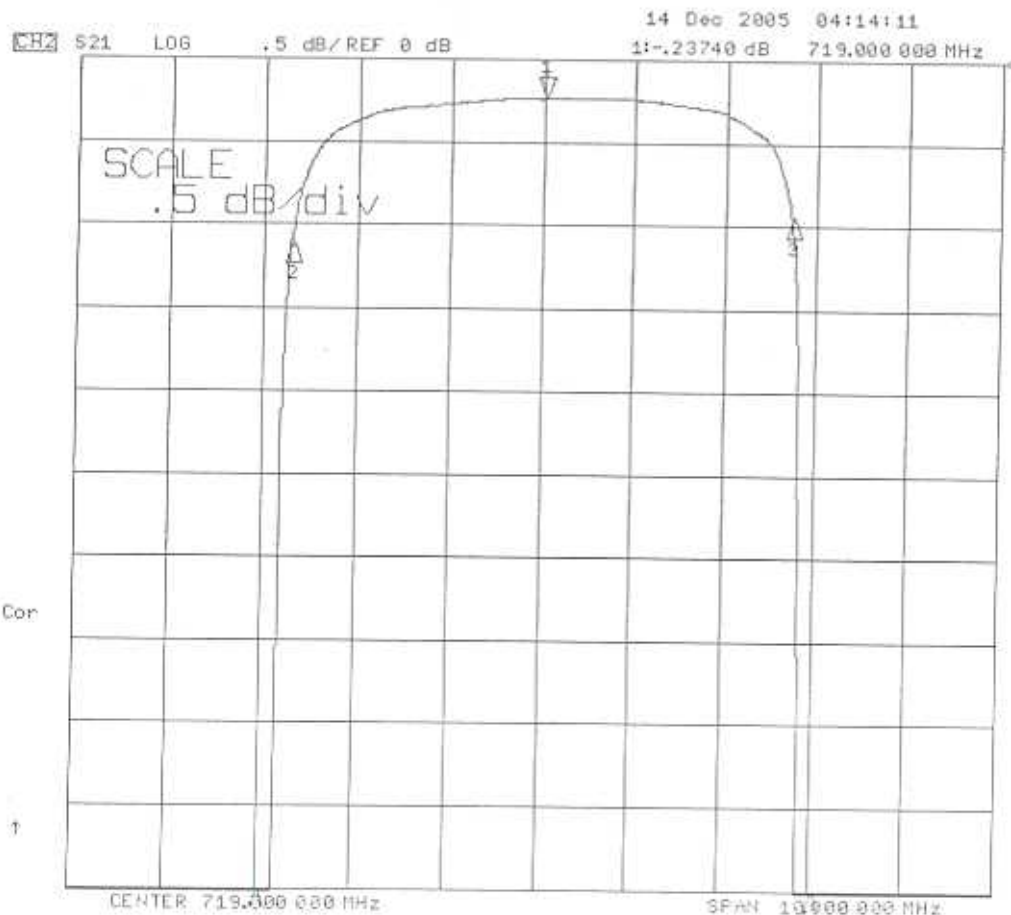
2:-1.1176 dB
716.290 MHz

3:-.94780 dB
721.710 MHz

4:-54.148 dB
716.000 MHz

5:-52.758 dB
722.000 MHz

REJECTION



CH2 Markers

2:-1.1150 dB
716.290 MHz

3:-.94950 dB
721.710 MHz

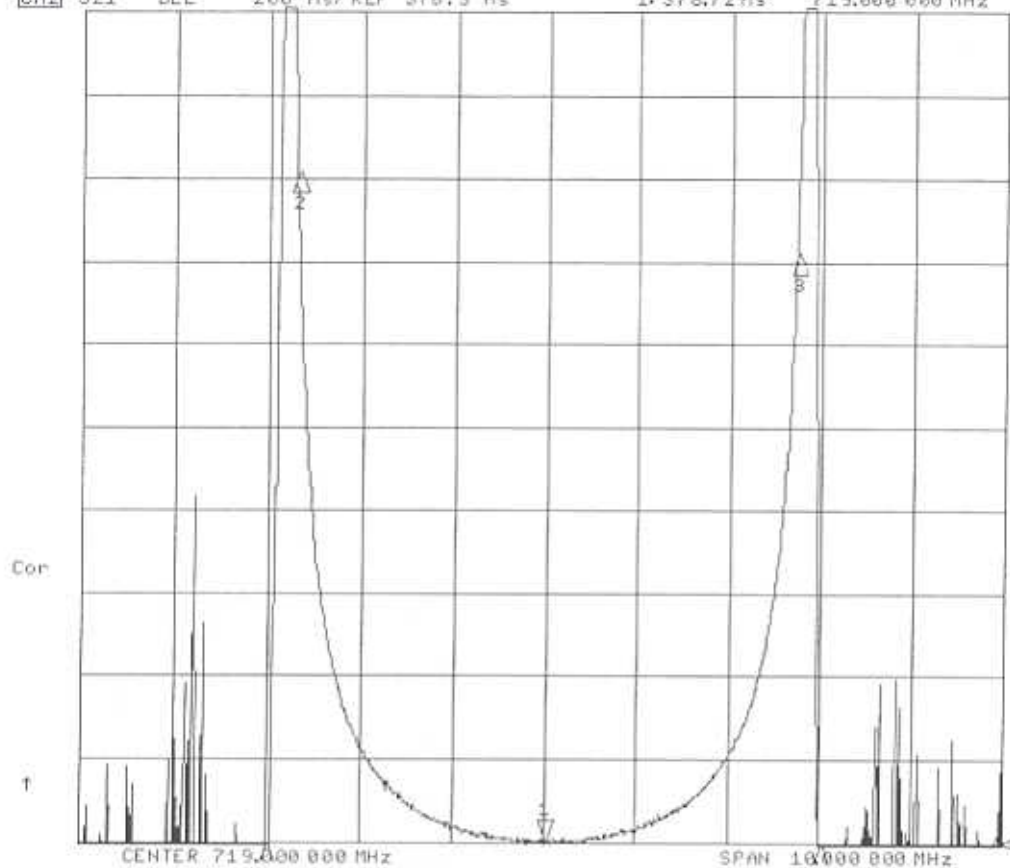
4:-54.292 dB
716.000 MHz

5:-52.708 dB
722.000 MHz

INSERTION LOSS

③

1301

MEDI AFLO
CH55 FILTER14 Dec 2005 04:15:11
CH2 S21 DEL 200 ns/REF 375.3 ns 1: 378.72 ns 719.000 000 MHz

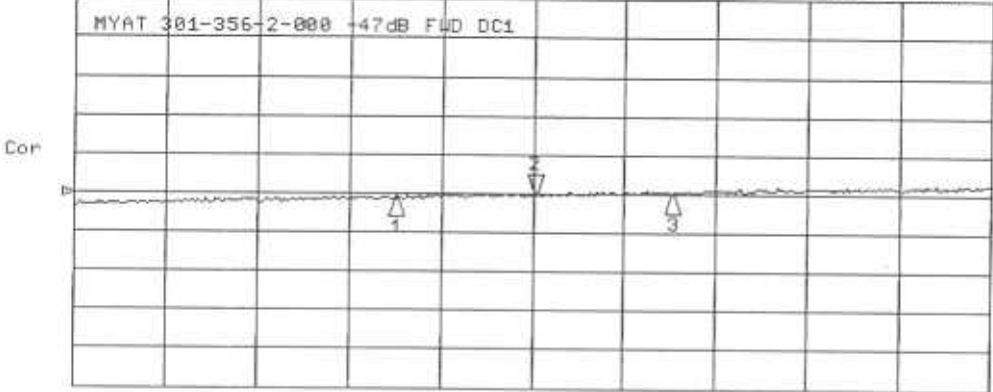
CH2 Markers:

2: 1.9907 us
716.290 MHz3: 1.7964 us
721.710 MHz4: 11.290 us
716.000 MHz5: 3.1162 us
722.000 MHz

GROUP DELAY

④

8 Dec 2005 09:49:39
 CH1 MEM LOG .5 dB/REF -47 dB 2:-47.019 dB 719.000 000 MHz

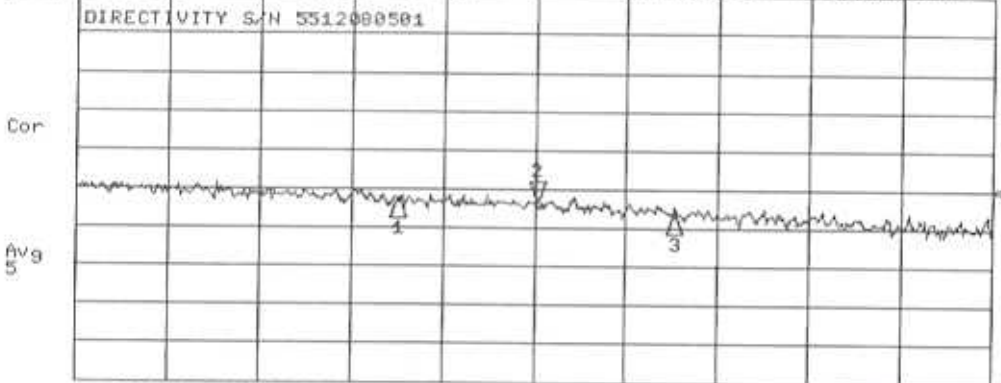


CH1 Markers

1:-47.059 dB
 716.000 MHz

3:-46.993 dB
 722.000 MHz

CH2 S21/M LOG 5 dB/REF -35 dB 2:-36.688 dB 719.000 000 MHz



CH2 Markers

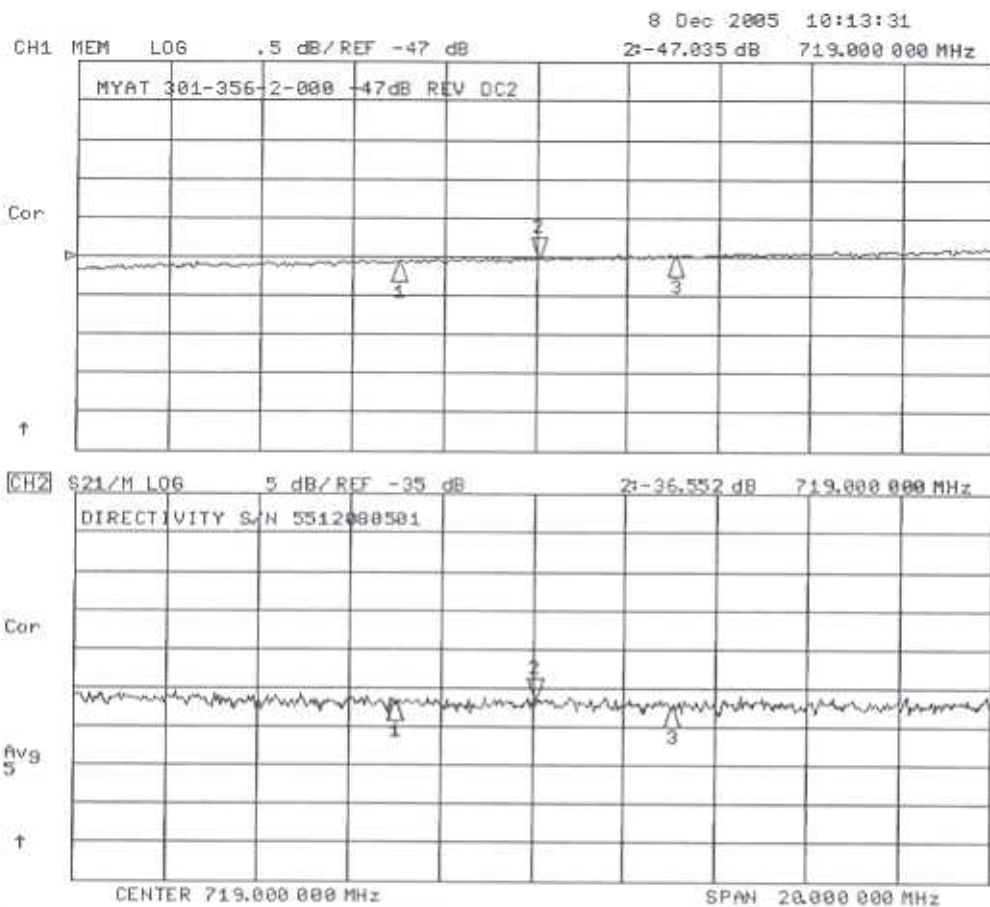
1:-36.319 dB
 716.000 MHz

3:-36.212 dB
 722.000 MHz

CENTER 719.000 000 MHz

SPAN 20.000 000 MHz

5



CH1 Markers

1i-47.074 dB
716.000 MHz

3i-46.996 dB
722.000 MHz

CH2 Markers

1i-36.759 dB
716.000 MHz

3i-37.390 dB
722.000 MHz

5A