

# SDIO WLAN 802.11b/g Card

## Quick Installation Guide

### Introduction

The SDIO WLAN 802.11b/g Card is an IEEE 802.11b/g wireless network card that provides Wi-Fi connectivity for mobile devices that have an SDIO slot, such as PDAs. The installation software is compatible with all Windows Mobile 5.0 and Pocket PC 2003 systems.

**Package Checklist** — The SDIO WLAN 802.11b/g Card package includes these items:

- One SDIO WLAN 802.11b/g Card
- One Installation Software CD
- This Quick Installation Guide

Inform your dealer if there are any incorrect, missing or damaged items.

**Caution:** This product is for handheld PDA devices only, use of this product with other devices may not be in compliance with US or Canada RF exposure limits. This equipment should be installed and operated with a minimum distance of 20 cm between the radiator and your body.

#### Federal Communication Commission Interference Statement

This equipment has been tested and found to comply with the limits for a Class B digital device, pursuant to Part 15 of the FCC Rules. These limits are designed to provide reasonable protection against harmful interference in a residential installation. This equipment generates, uses and can radiate radio frequency energy and, if not installed and used in accordance with the instructions, may cause harmful interference to radio communications. However, there is no guarantee that interference will not occur in a particular installation. If this equipment does cause harmful interference to radio or television reception, which can be determined by turning the equipment off and on, the user is encouraged to try to correct the interference by one of the following measures:

- Reorient or relocate the receiving antenna.
- Increase the separation between the equipment and receiver.
- Connect the equipment into an outlet on a circuit different from that to which the receiver is connected.
- Consult the dealer or an experienced radio/TV technician for help.

This device complies with Part 15 of the FCC Rules. Operation is subject to the following two conditions: (1) This device may not cause harmful interference, and (2) this device must accept any interference received, including interference that may cause undesired operation.

FCC Caution: Any changes or modifications not expressly approved by the party responsible for compliance could void the user's authority to operate this equipment.

#### IMPORTANT NOTE:

##### FCC Radiation Exposure Statement:

This equipment complies with FCC radiation exposure limits set forth for an uncontrolled environment. End users must follow the specific operating instructions for satisfying RF exposure compliance. To maintain compliance with FCC RF exposure compliance requirements, please follow operation instruction as documented in this manual.

This transmitter must not be co-located or operating in conjunction with any other antenna or transmitter.

IEEE 802.11b or 802.11g operation of this product in the U.S.A. is firmware-limited to channels 1 through 11.

##### Industry Canada Statement

This device complies with RSS-210 of the Industry Canada Rules. Operation is subject to the following two conditions:

- 1) this device may not cause interference and
- 2) this device must accept any interference, including interference that may cause undesired operation of the device

#### IMPORTANT NOTE:

##### IC Radiation Exposure Statement:

This equipment complies with IC radiation exposure limits set forth for an uncontrolled environment. End users must follow the specific operating instructions for satisfying RF exposure compliance. To maintain compliance with IC RF exposure compliance requirements, please follow operation instruction as documented in this manual.

### Getting Started

After unpacking the package items, follow the steps in this guide to install the SDIO card software and configure your Wi-Fi network connection.

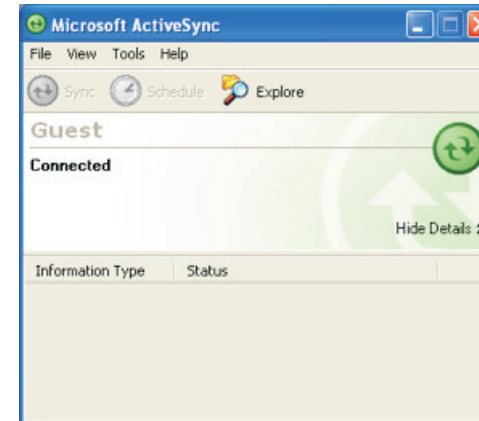
### Installing the Software

To install the SDIO WLAN 802.11b/g Card software and driver, you need to first connect a USB cable to your mobile device from a PC and establish a connection using Microsoft ActiveSync® software.

**Note:** ActiveSync is a free software download for Windows®, available from the Microsoft web site at <http://www.microsoft.com/windowsmobile>.

Your mobile device may support data link connections other than a USB cable. Refer to your mobile device documentation for the PC connection options.

When you have established an ActiveSync connection from your PC to your mobile device, the PC displays a window similar to that below.



You are now ready to start installing the SDIO Card software. Note that you do not need to insert the SDIO WLAN 802.11b/g Card into your mobile device at this point.

Follow these steps:

1. Insert the installation software CD into your PC's CD drive. The following window displays.

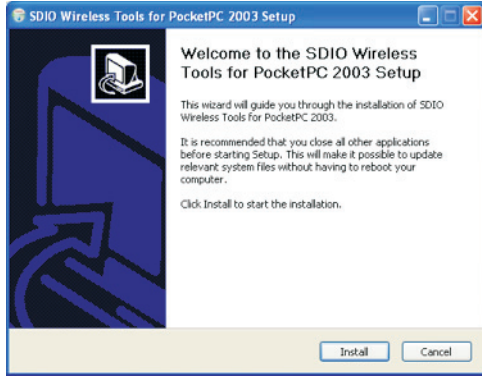


Select the installation software that is compatible with your mobile device system software; either Windows Mobile 5.0 or Windows Pocket PC 2003. (This example shows a Pocket PC 2003 installation, however a Windows Mobile 5.0 installation is almost identical.)

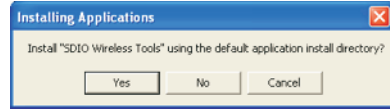
*(Continued on the other side of this guide.)*

(Continued from the other side of this guide.)

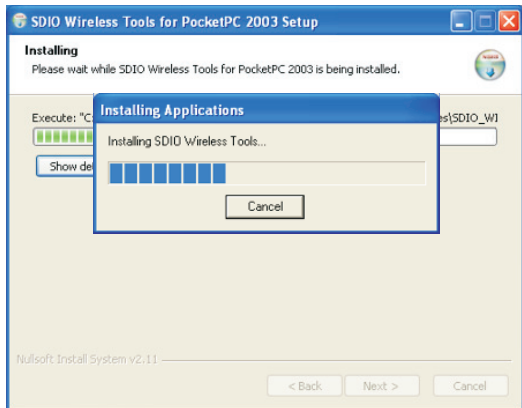
- The Windows installation wizard starts. Click the Install button.



- When a window displays to confirm the Wireless Tools software installation, click Yes.



- Wait while the Wireless Tools software is installed.

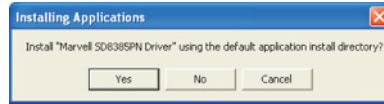


- When the Wireless Tools software installation is complete, the following message displays:



Click OK.

- When a window displays to confirm the driver software installation, click Yes..



- Wait while the driver software is installed, then click OK when the completed download message displays. Then click Finish to close the wizard.



Software installation is now complete. Continue with the instructions on setting up the Wi-Fi network connection on your mobile device.

## Configuring the SDIO Card

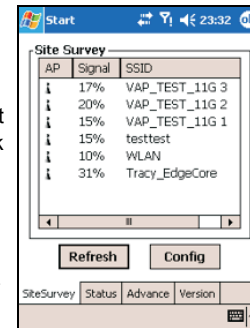
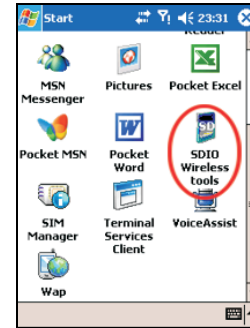
When the SDIO WLAN 802.11b/g Card software is installed on your mobile device, you need to insert the SDIO card into the slot to configure your network connection.

**Note:** If the SDIO WLAN 802.11b/g Card is already in the SDIO slot, you need to remove it then insert again to initialize the software driver.

The following example shows the SDIO WLAN 802.11b/g Card network configuration for Pocket PC 2003. The set up procedure is similar for Windows Mobile 5.0.

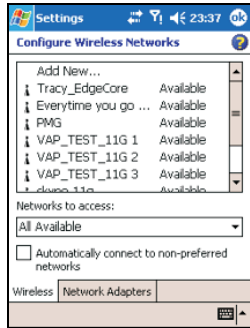
Follow these steps:

- The SDIO WLAN 802.11b/g Card software should start automatically when it is first inserted. If it does not start, you can find the SDIO Wireless Tools program and start it manually.
- The Site Survey screen shows Wi-Fi networks within range. Select Refresh to scan for available networks. Select Config to set up a network connection

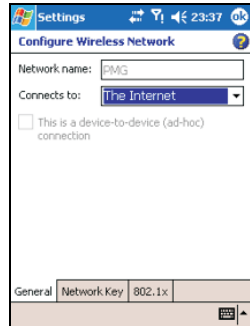


Normally, you need to be within 25 m (82 ft) of a wireless access point to be able to connect to it. If the network you want to connect to is not on the list, move to another location and try again.

- From the Configure Wireless Networks screen, select a network name from the list, or "Add New..." to specify a new network name.



- Under General network configuration, select OK to connect to the wireless network.



- If the wireless network is not "Open" and uses security, select the Network Key tab. Contact the wireless network operator for the security settings required for network access.

**Note:** All wireless networks that are configured on the mobile device are saved as "preferred networks." The mobile device will automatically try to connect to preferred networks when detected.

For more information on installing the SDIO WLAN 802.11b/g Card, refer to the *Installation Guide*, which is on the Installation Software CD included in the package.