

EXHIBIT 4

EQUIPMENT PHOTOGRAPHS

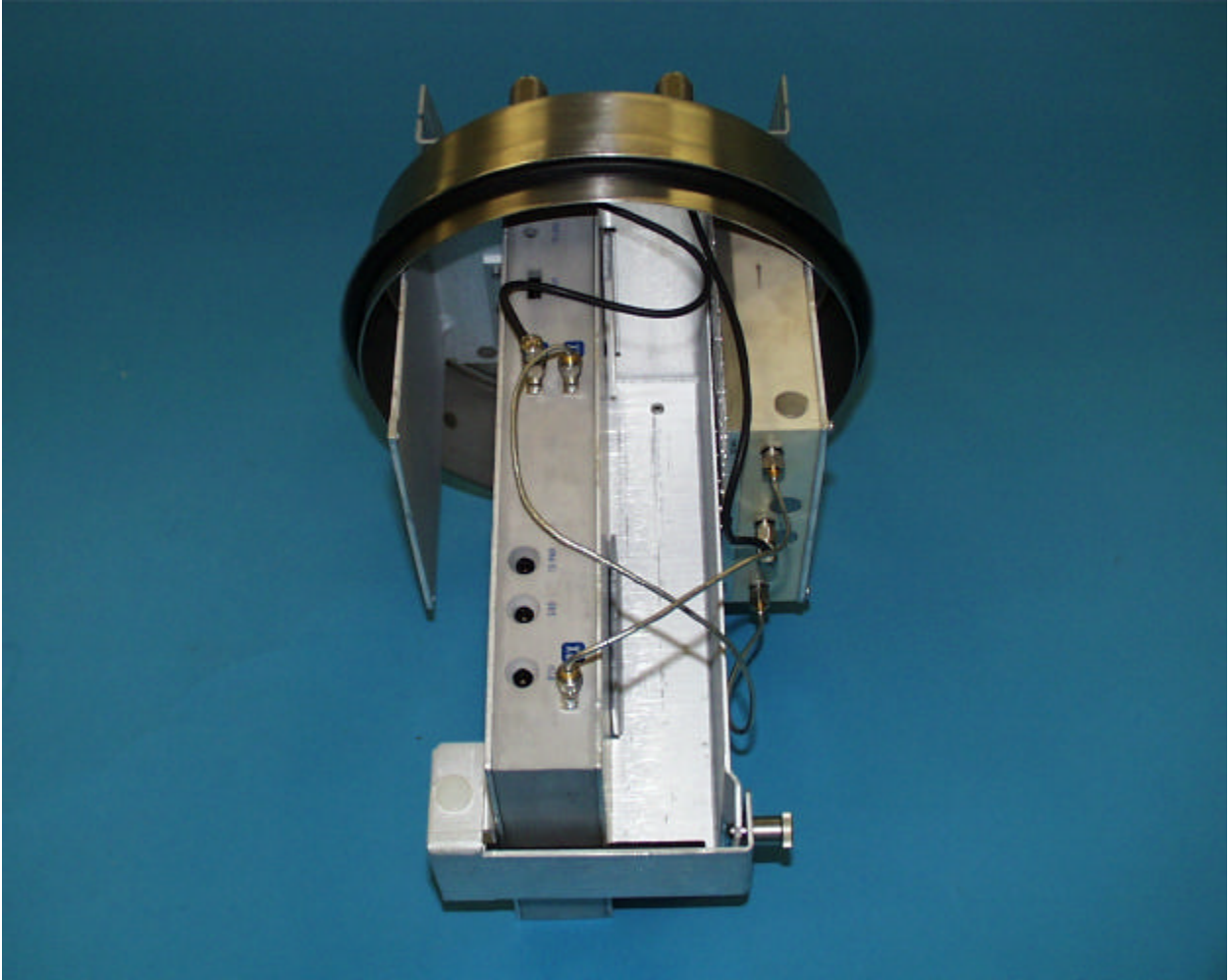
Photograph 4.1: Mast Mount Transmitter



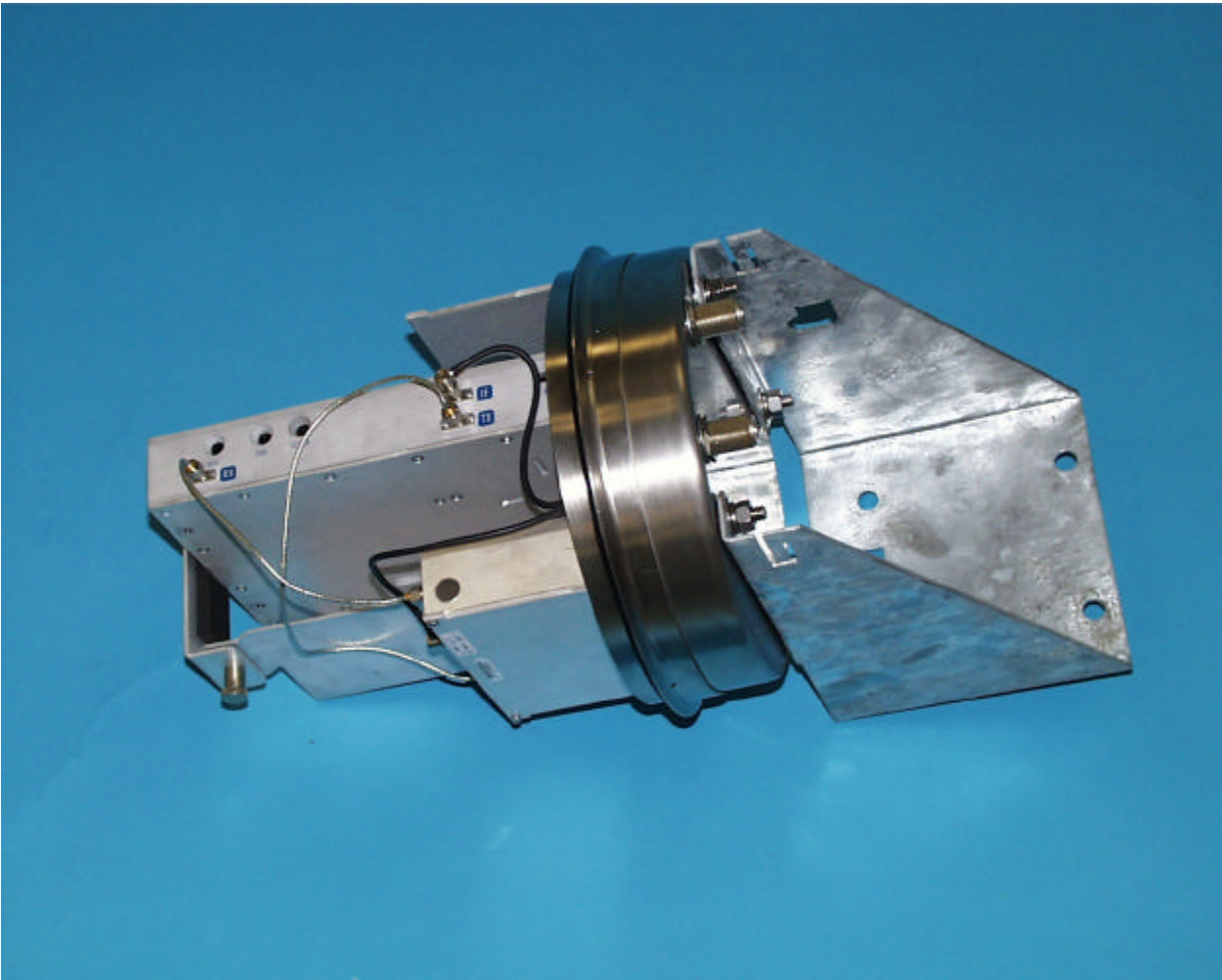
Photograph 4.2: Mast Mount Transmitter Side View



Photograph 4.3: Mast Mount Transmitter (housing removed) Top View



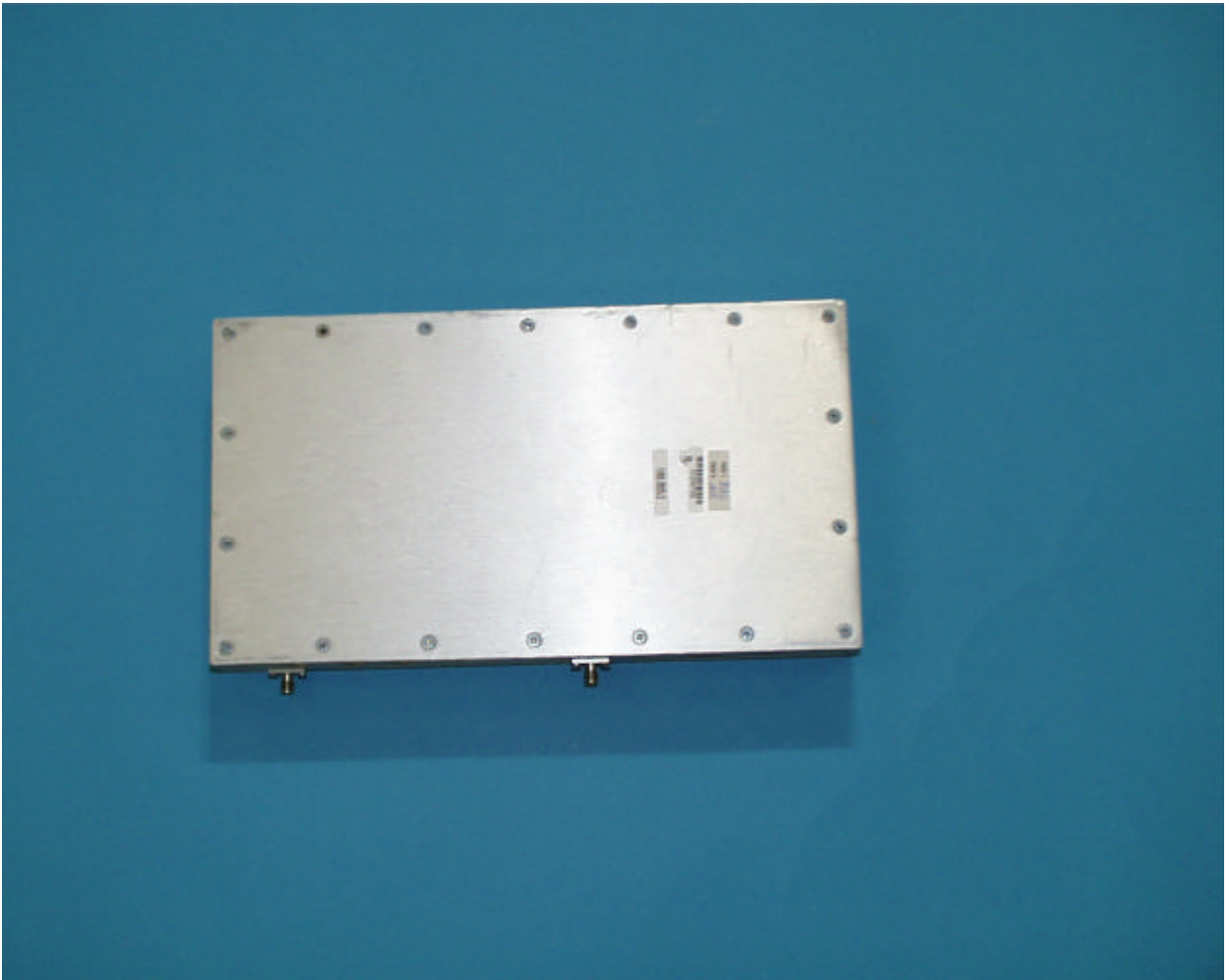
Photograph 4.4: Mast Mount Transmitter (housing removed) Side View



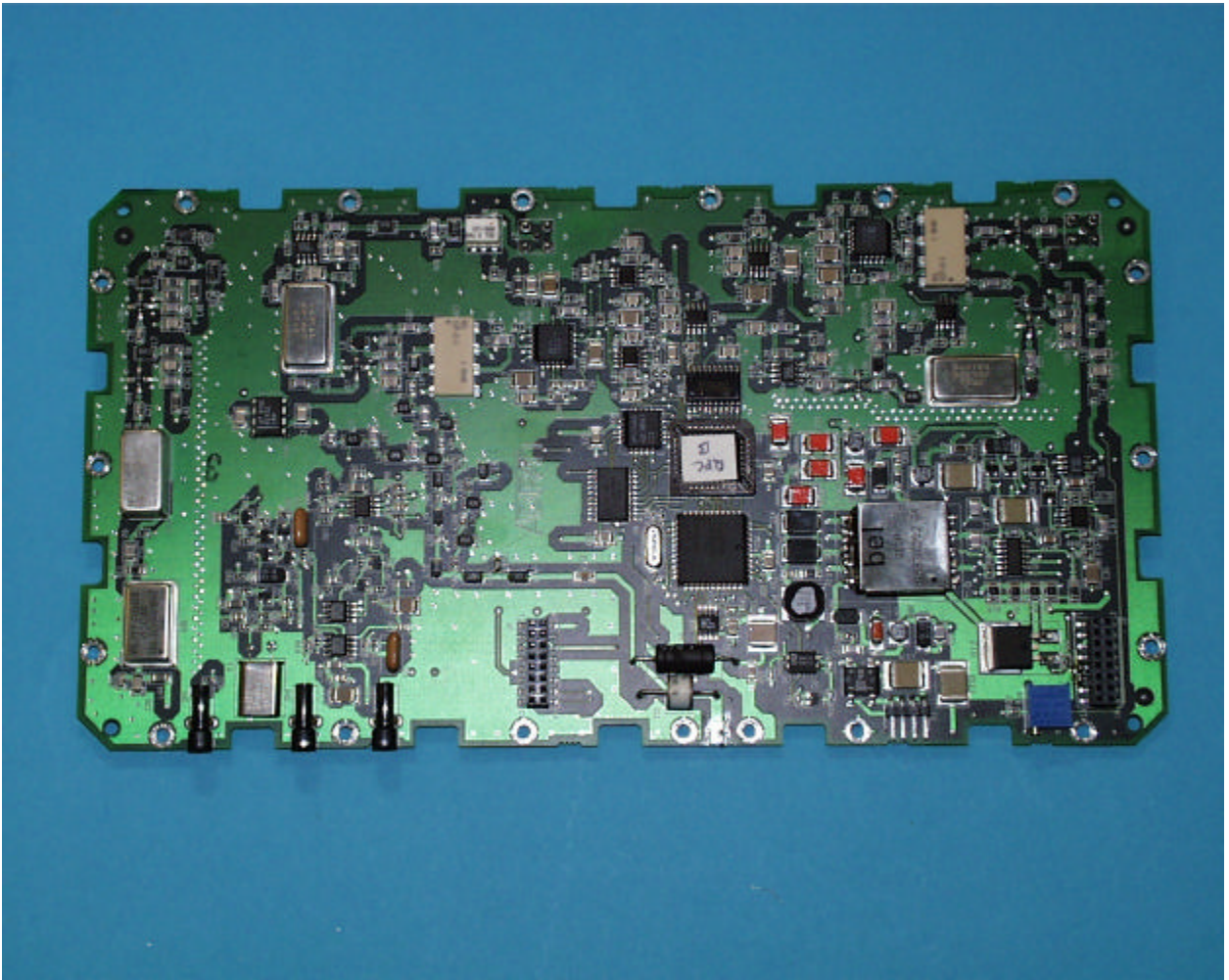
Photograph 4.5: RF Section Top View



Photograph 4.6: RF Section Bottom View

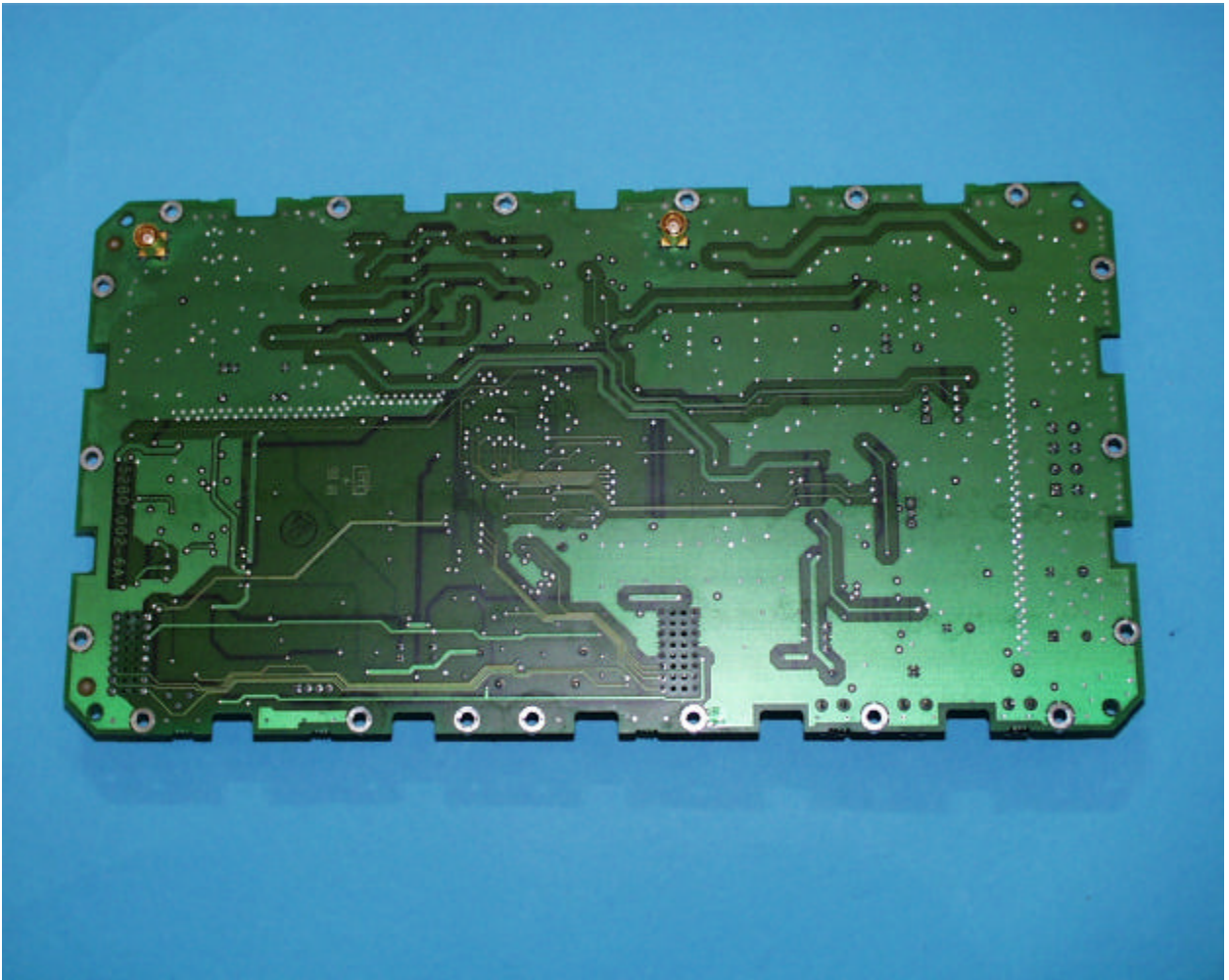


Photograph 4.7: RF Assembly/RF2 PCB Top View

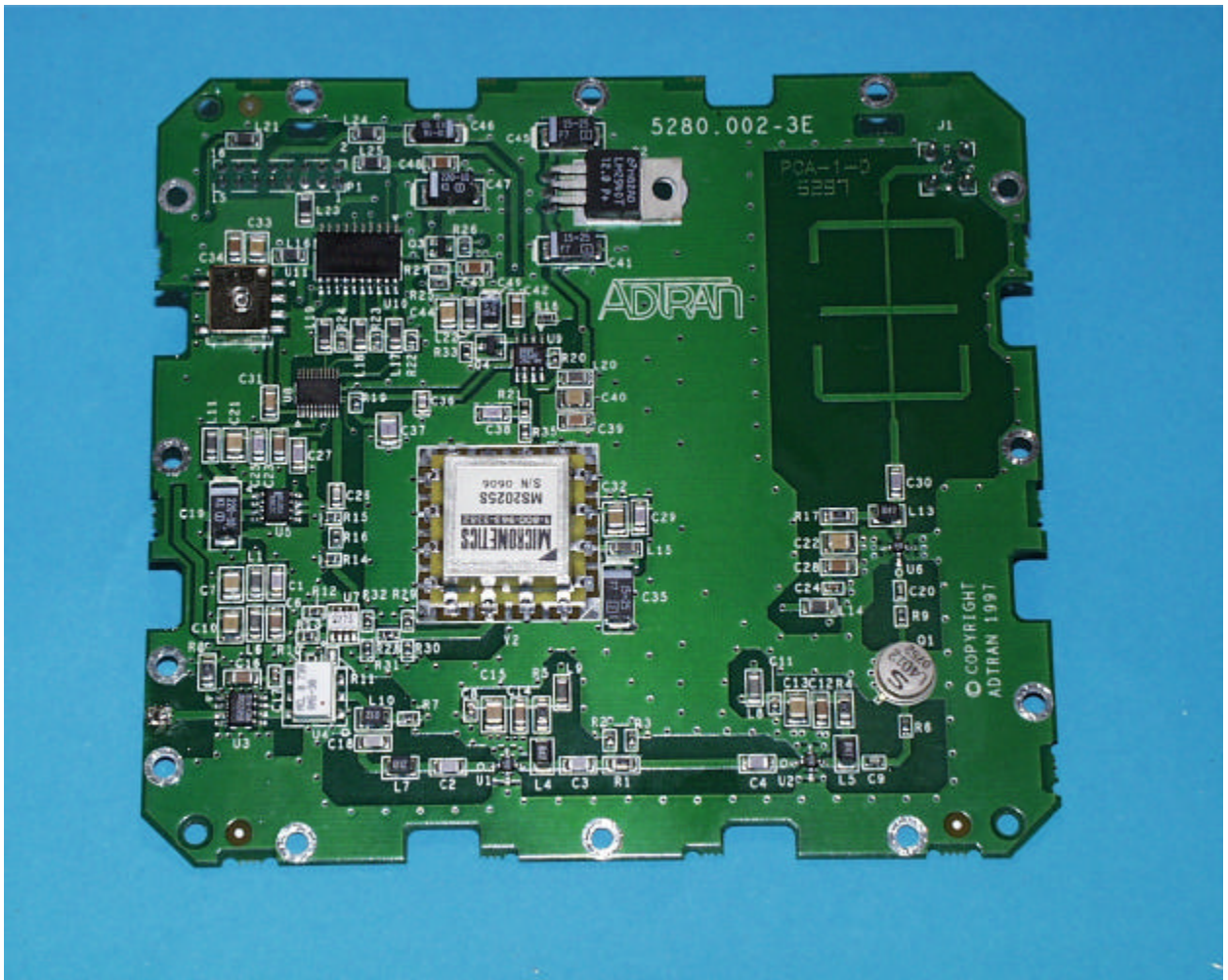




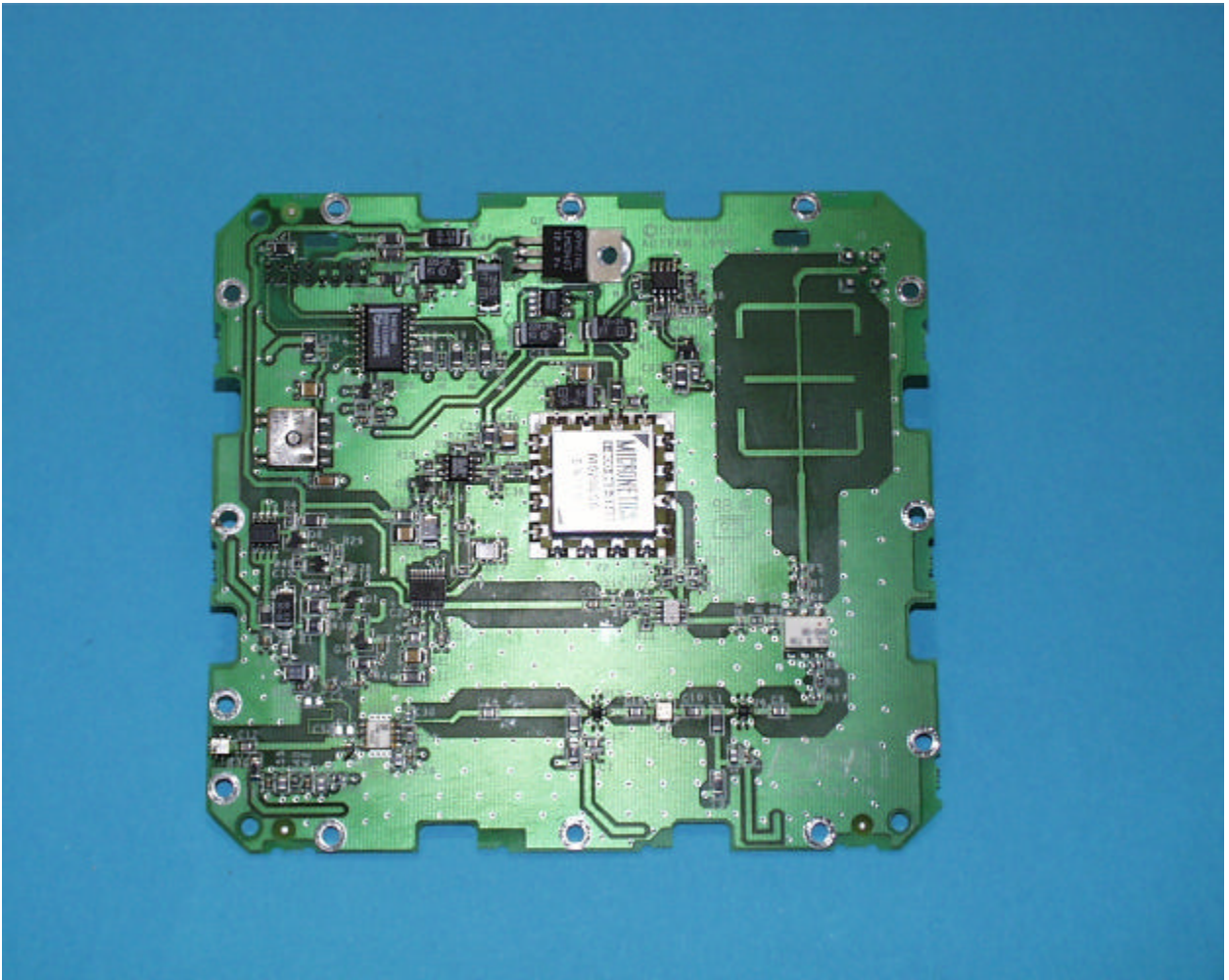
Photograph 4.8: RF Assembly/RF2 PCB Bottom View



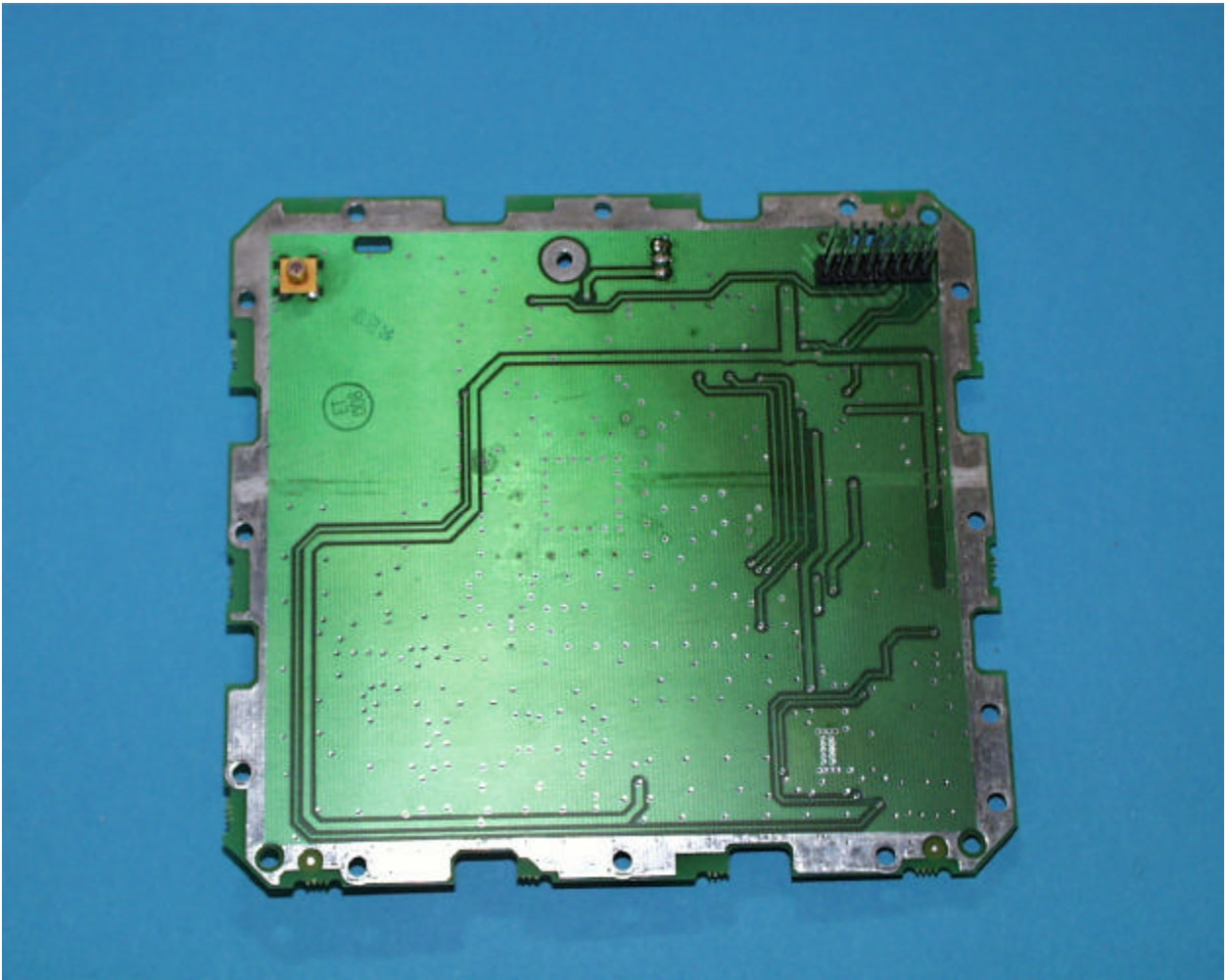
Photograph 4.9: RF Assembly TX/RX PCB Top View



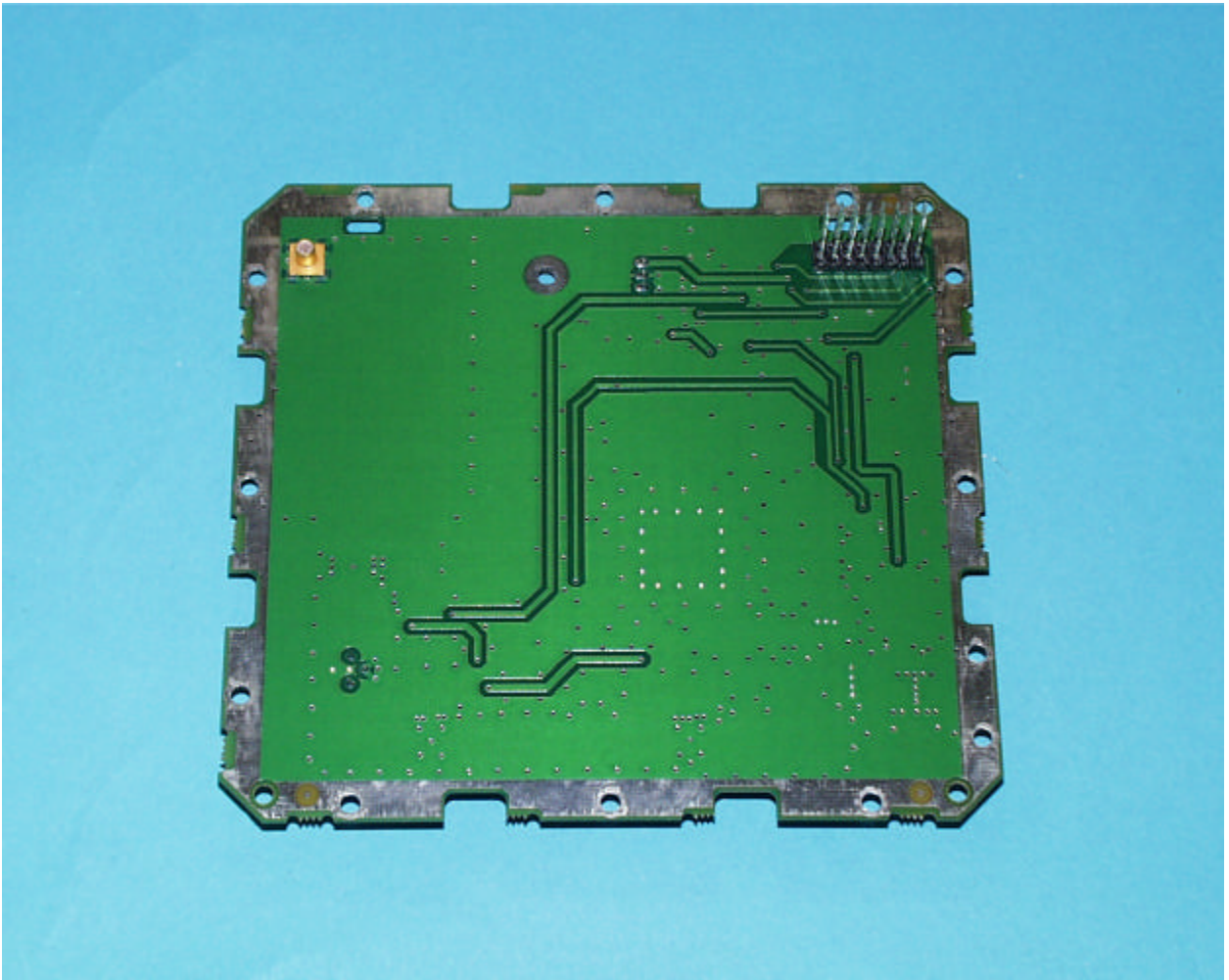
Photograph 4.10: RF Assembly TX/RX PCB Top View (continued)



Photograph 4.11: RF Assembly TX/RX PCB Bottom View



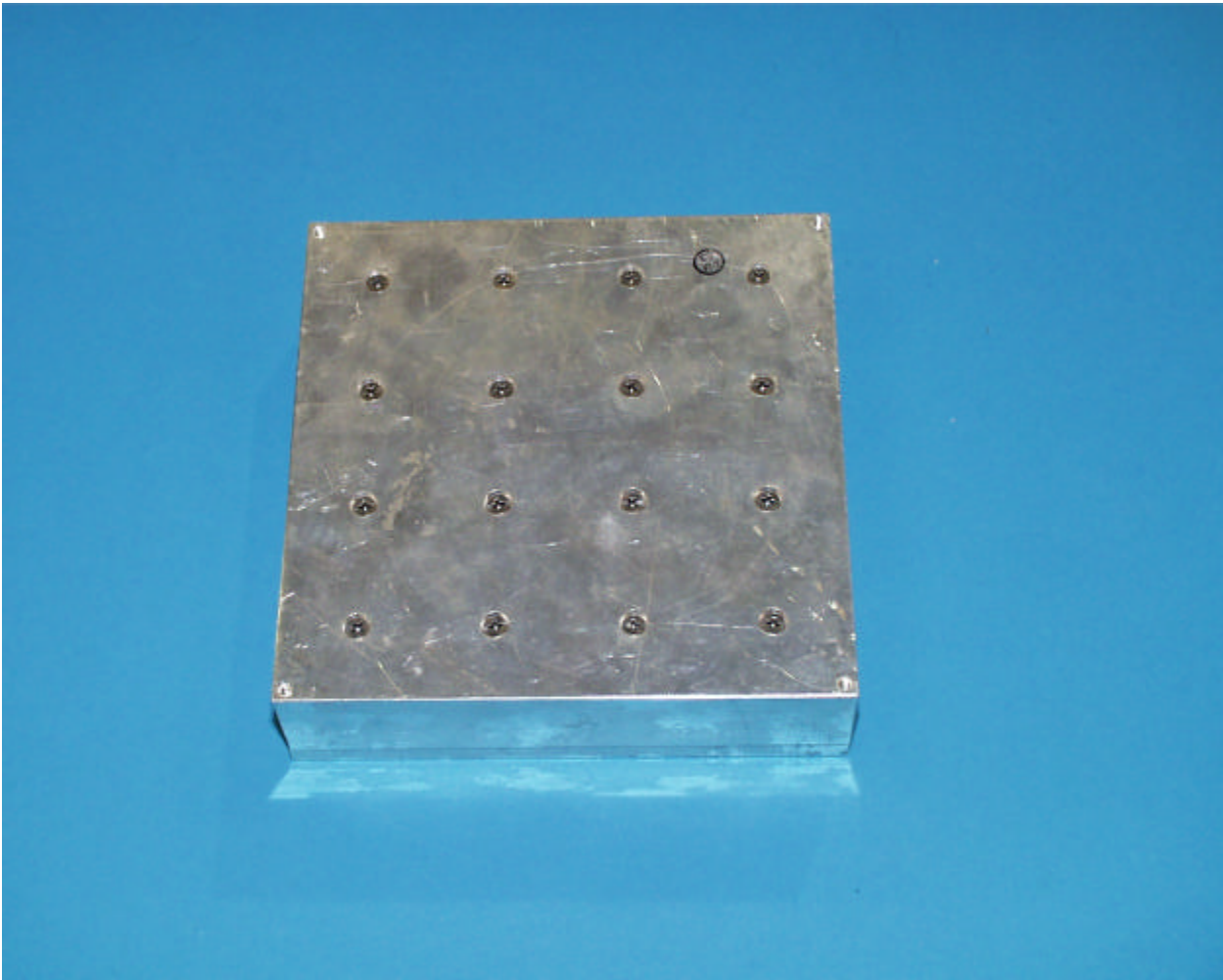
Photograph 4.12: RF Assembly TX/RX PCB Bottom View (continued)



Photograph 4.13: Diplexer/Filter Top View



Photograph 4.14: Diplexer Filter Bottom View



Photograph 4.15: Baseband Processor Assembly Front View

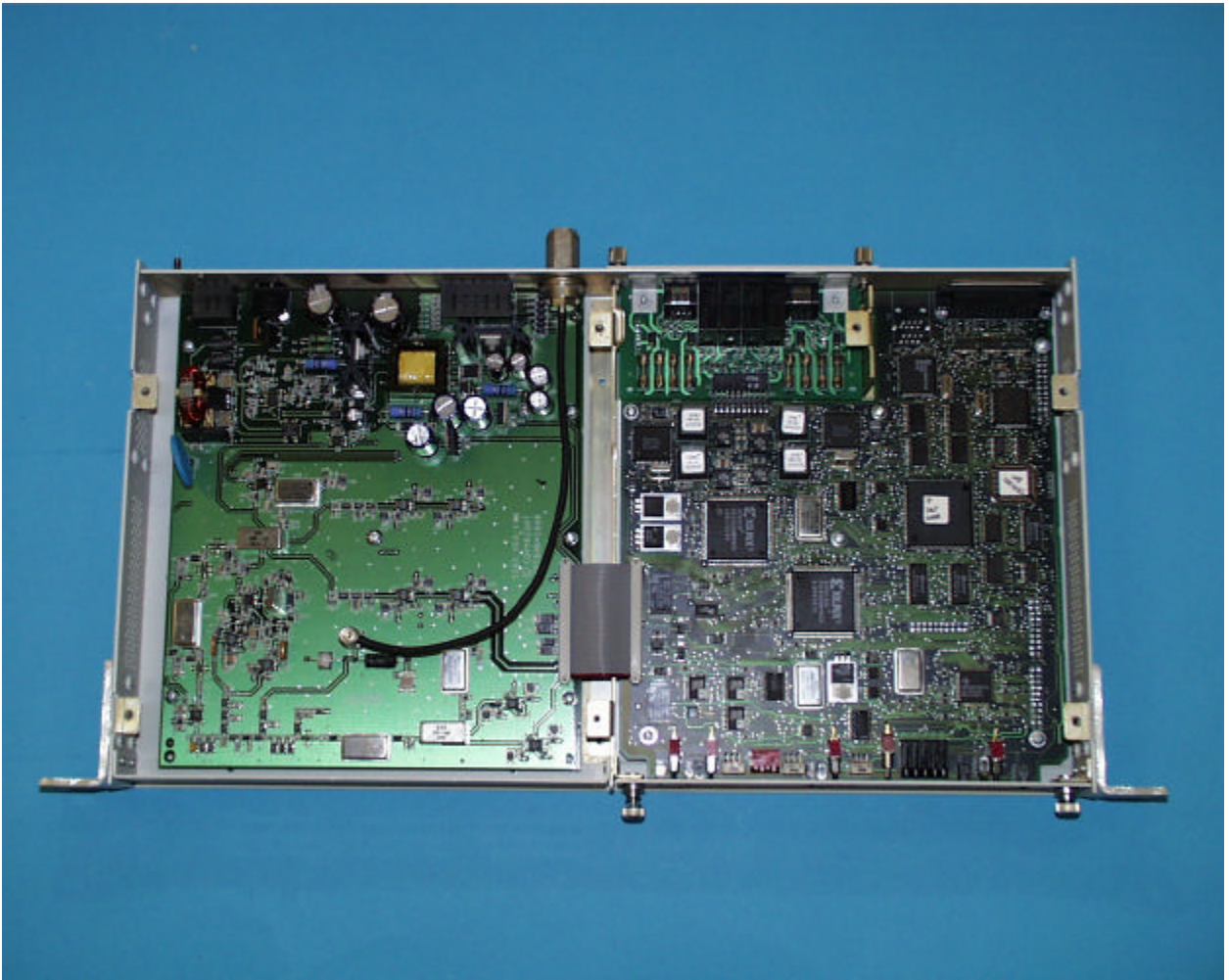




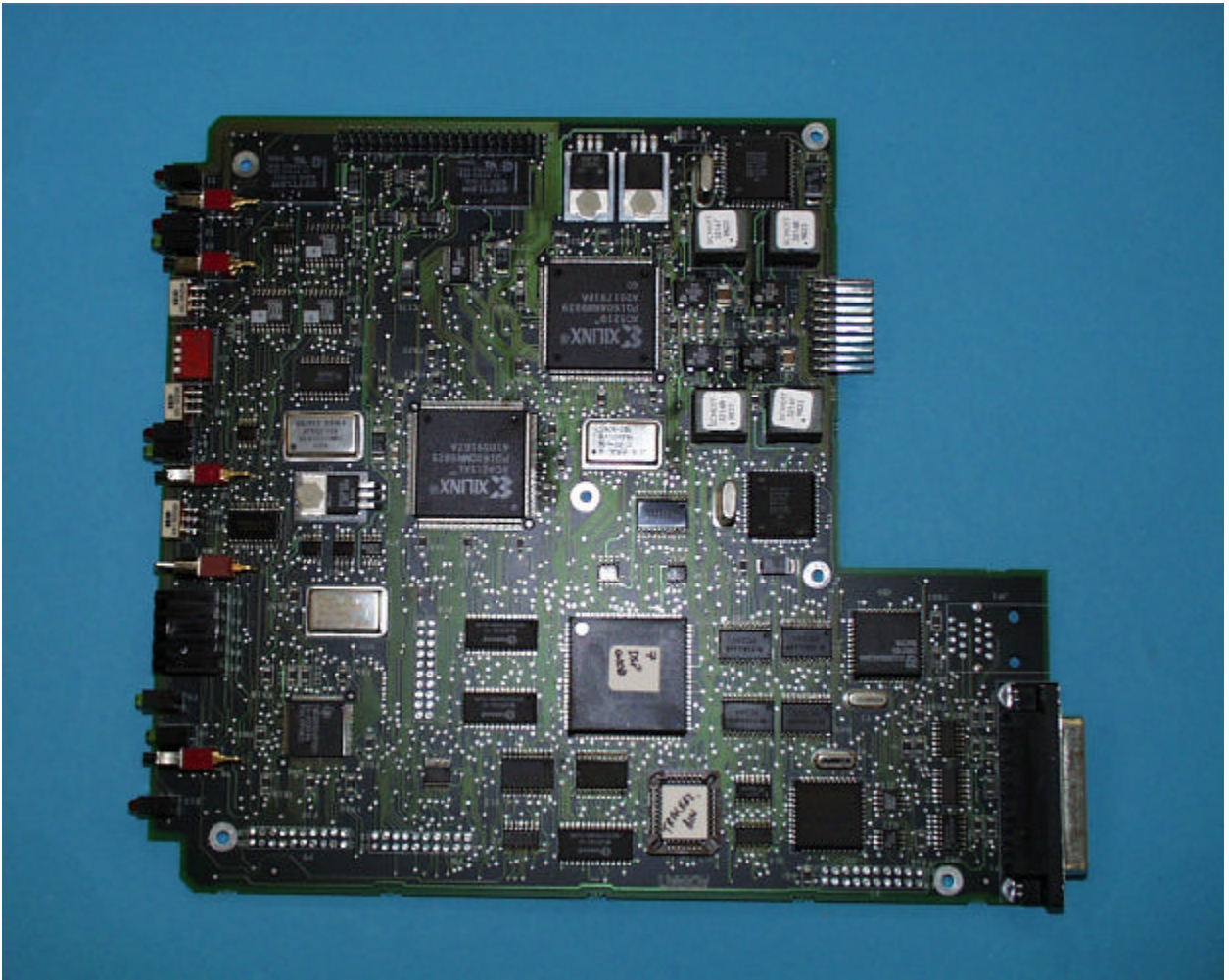
Photograph 4.16: Baseband Processor Back View



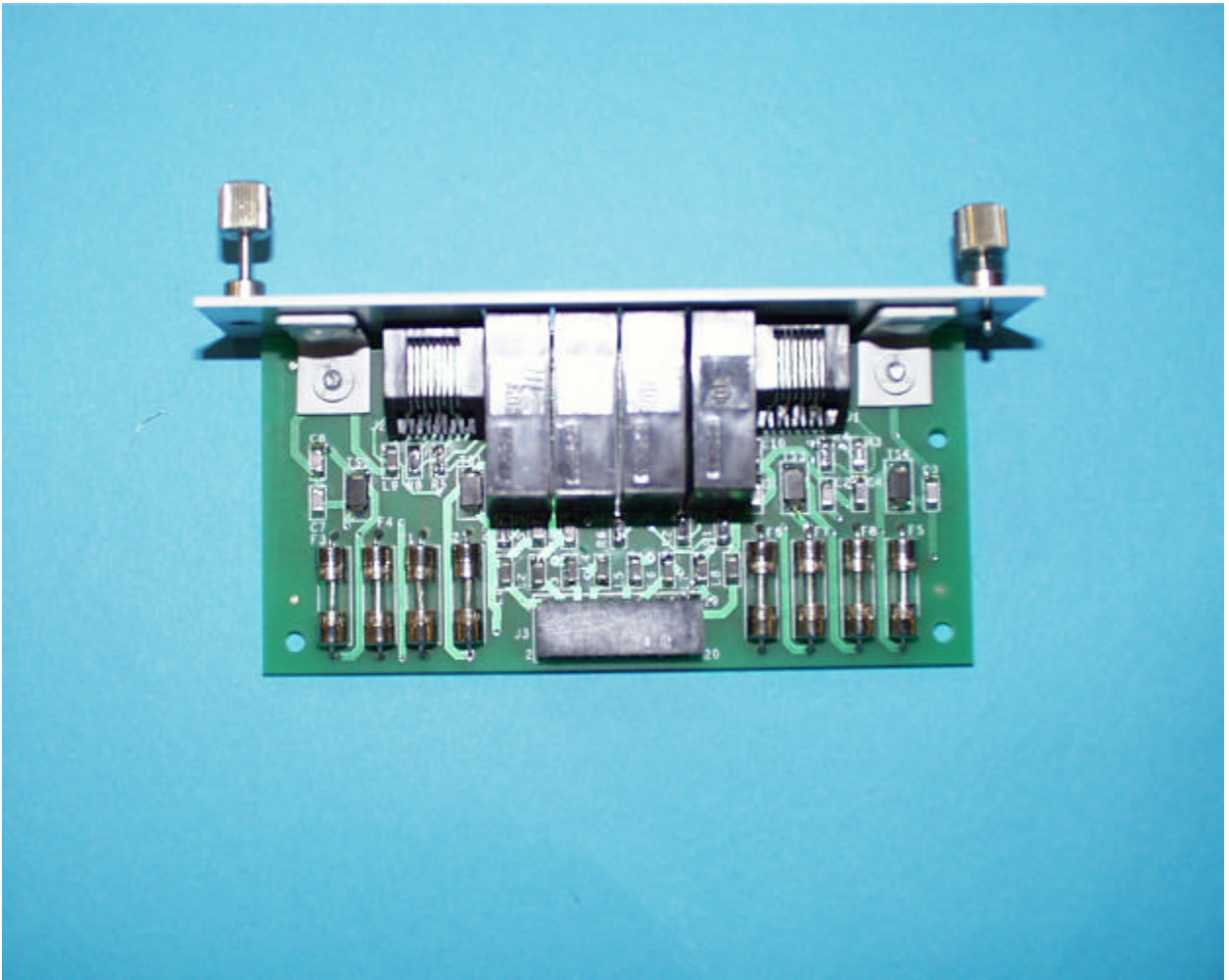
Photograph 4.17: Baseband Processor PCB



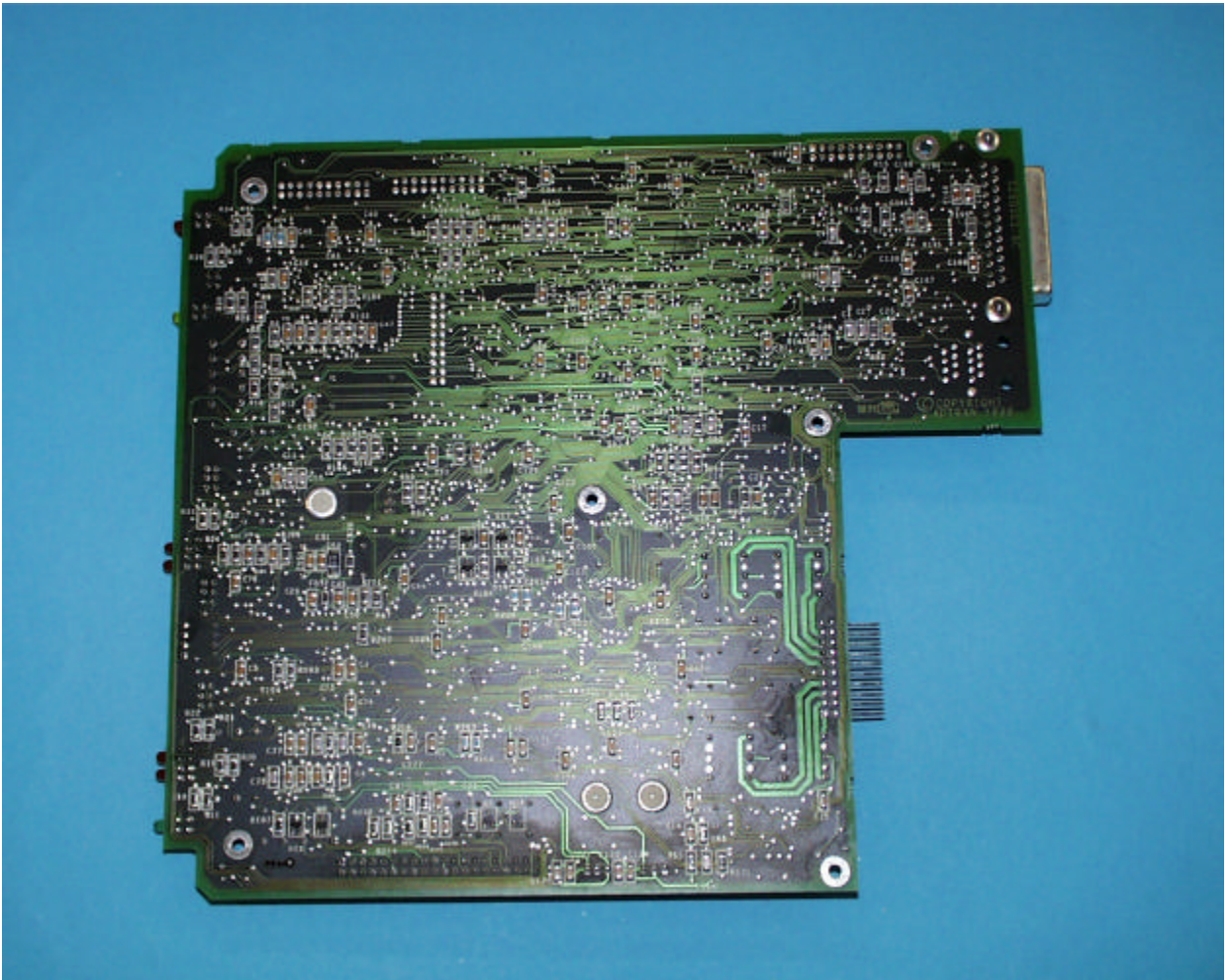
Photograph 4.18: Processor Board Top View



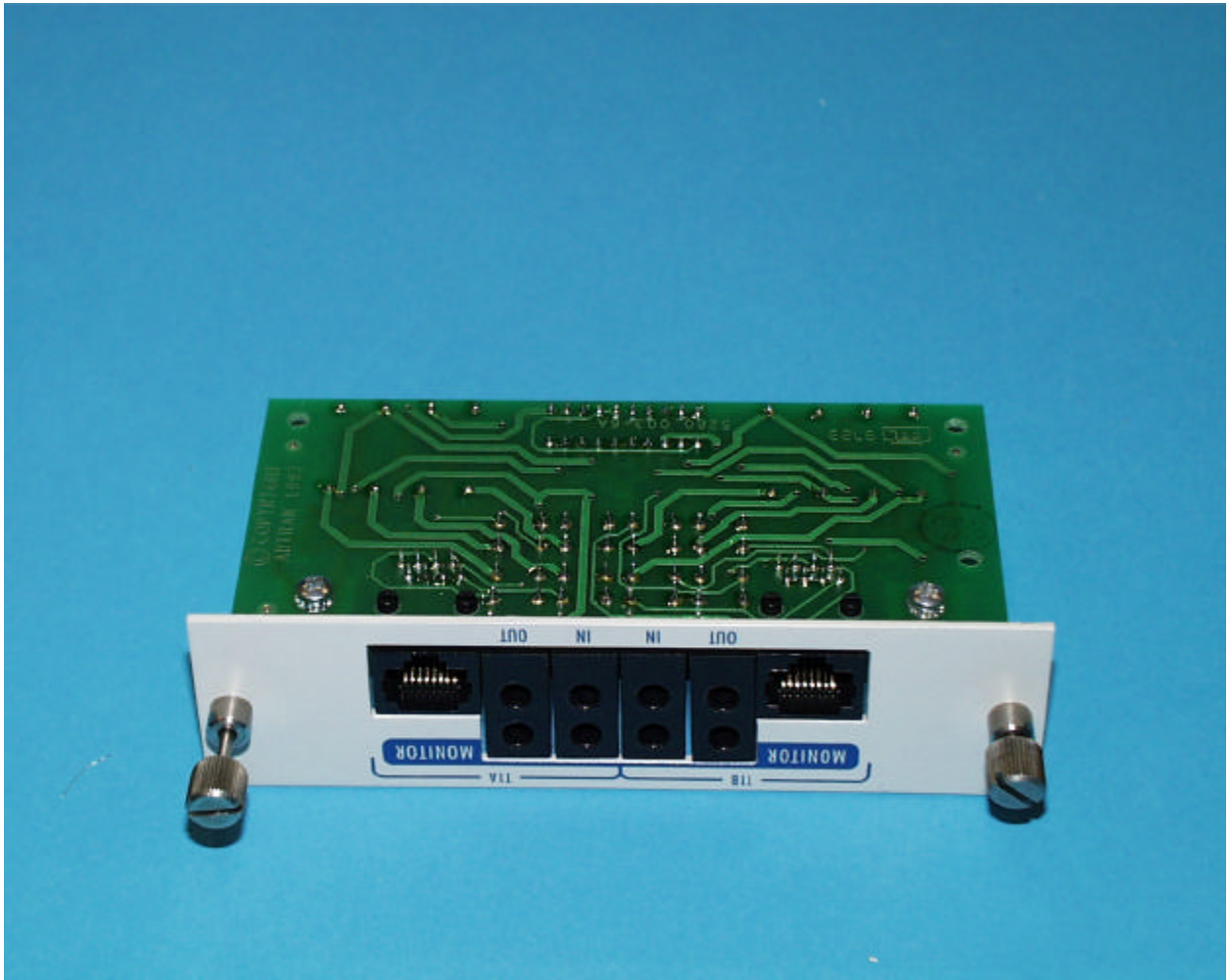
Photograph 4.19: Processor Board Top View (continued)



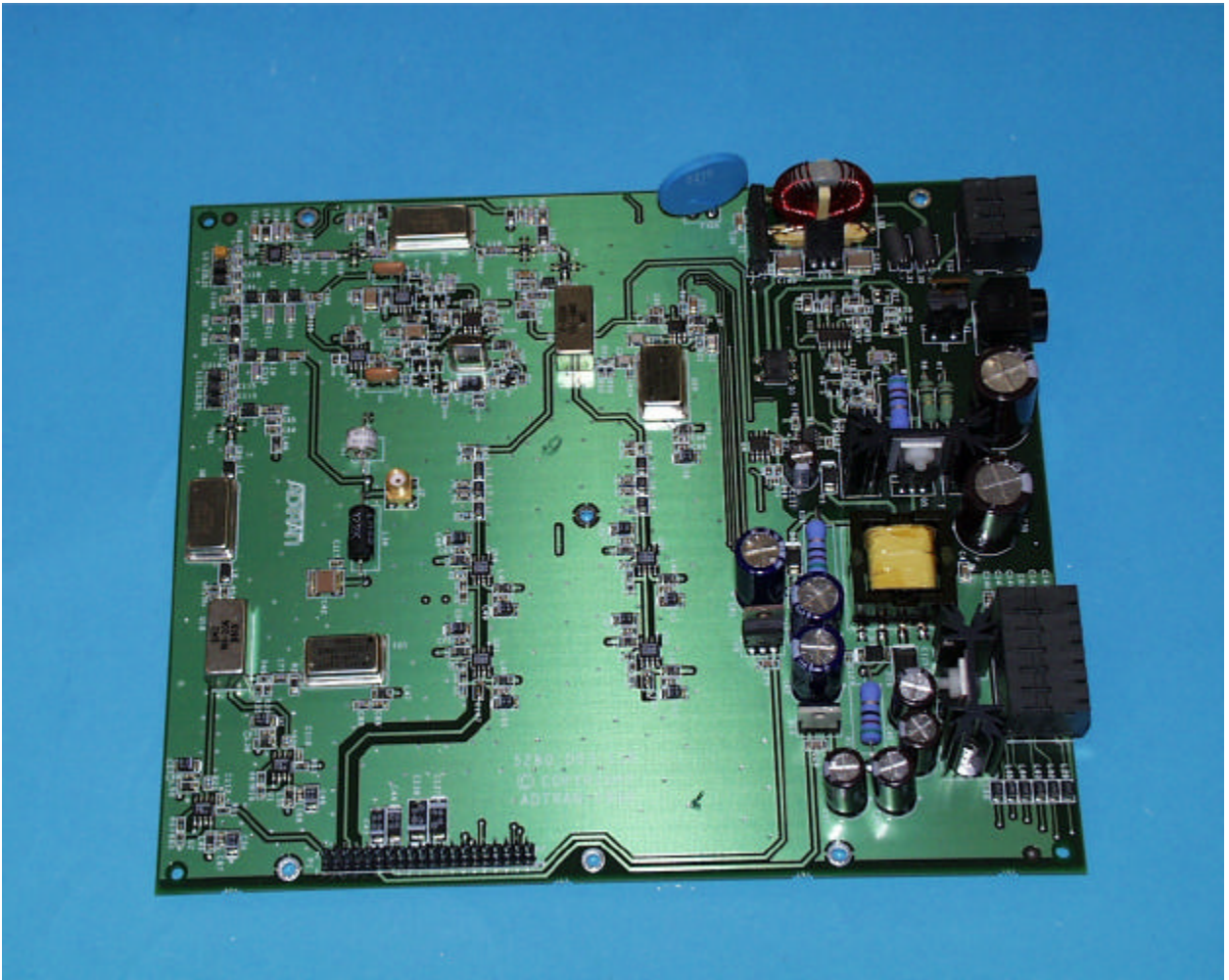
Photograph 4.20: Processor Board Bottom View



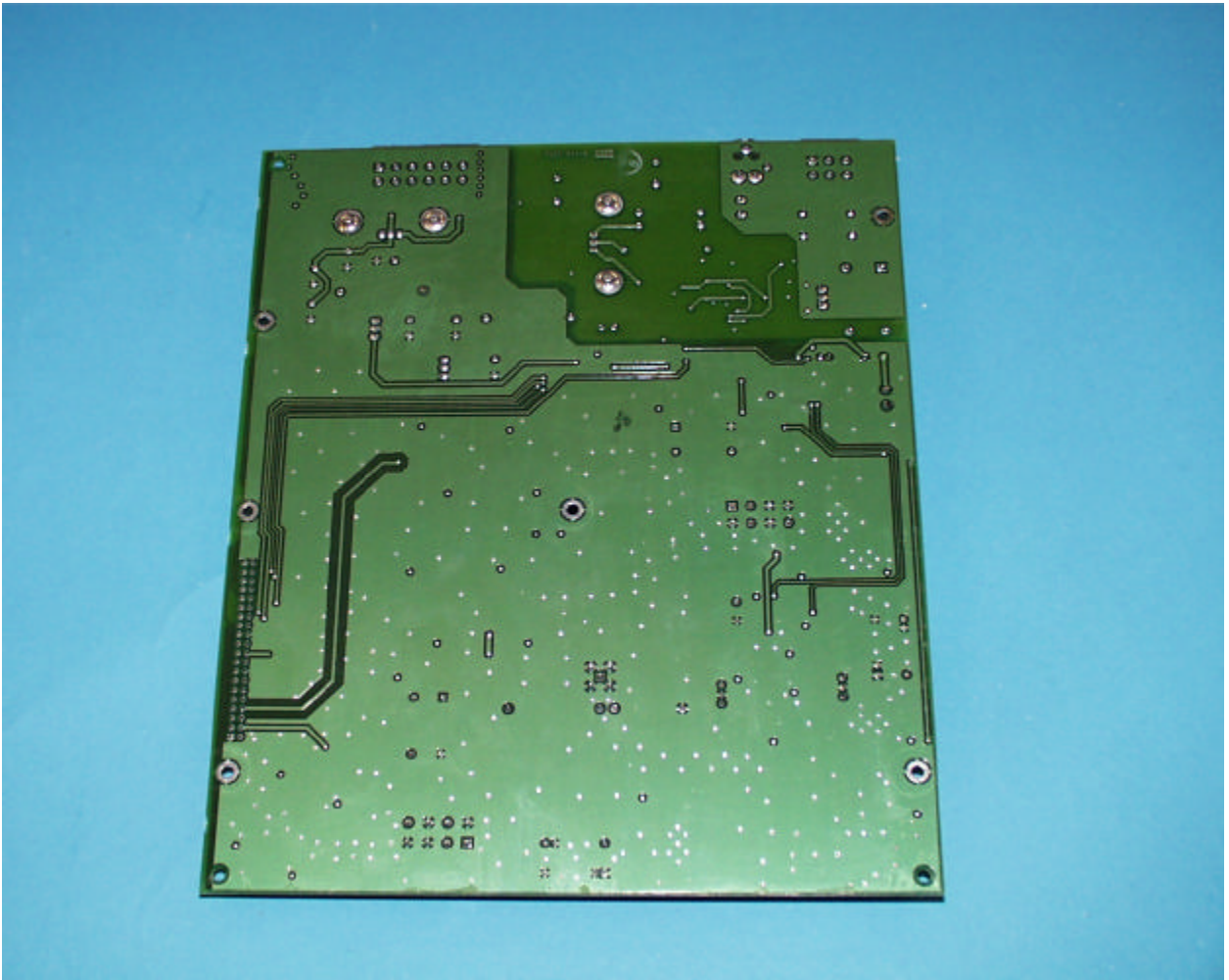
Photograph 4.21: Processor Board Bottom View (continued)



Photograph 4.22: IF Assembly Top View



Photograph 4.23: IF Assembly Bottom View





Photograph 4.24: Power Supply

