

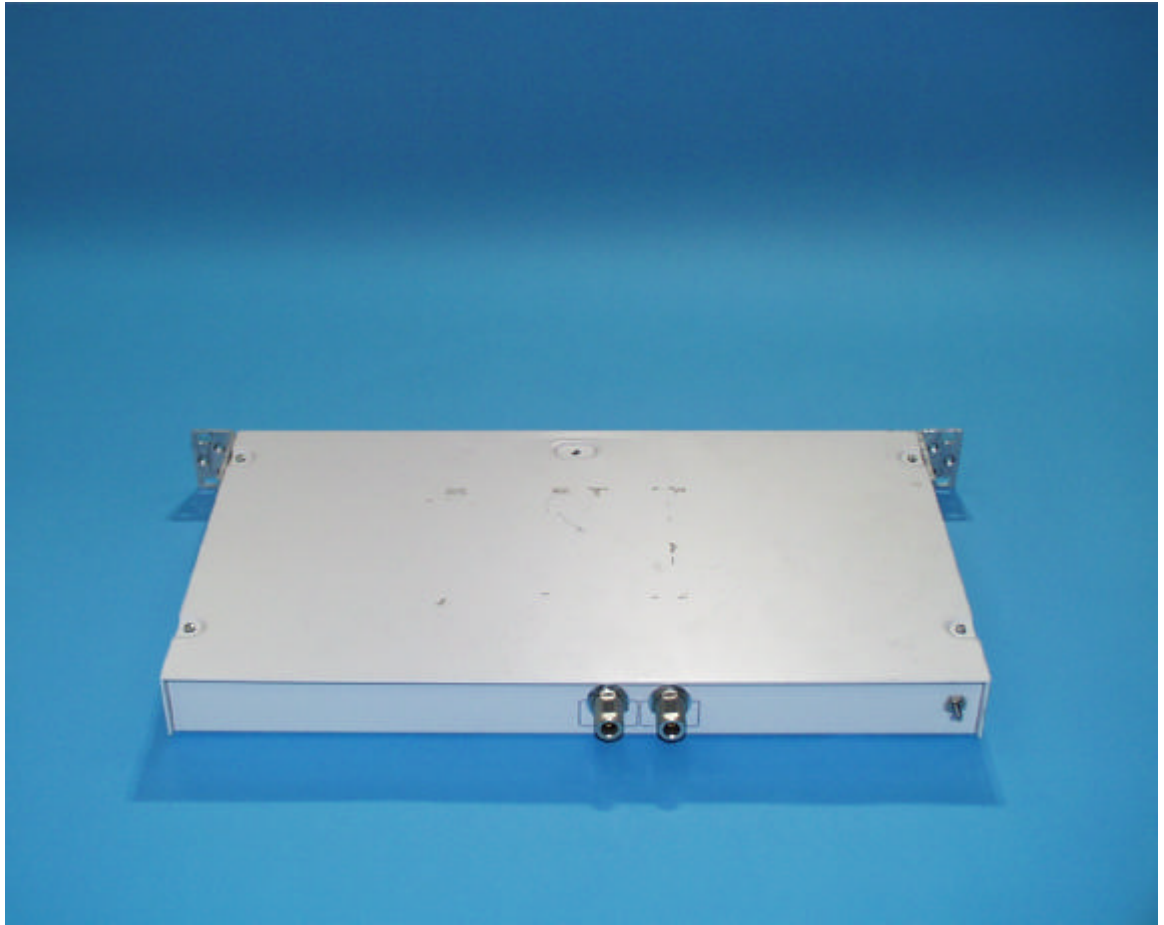
EXHIBIT 4

EQUIPMENT PHOTOGRAPHS

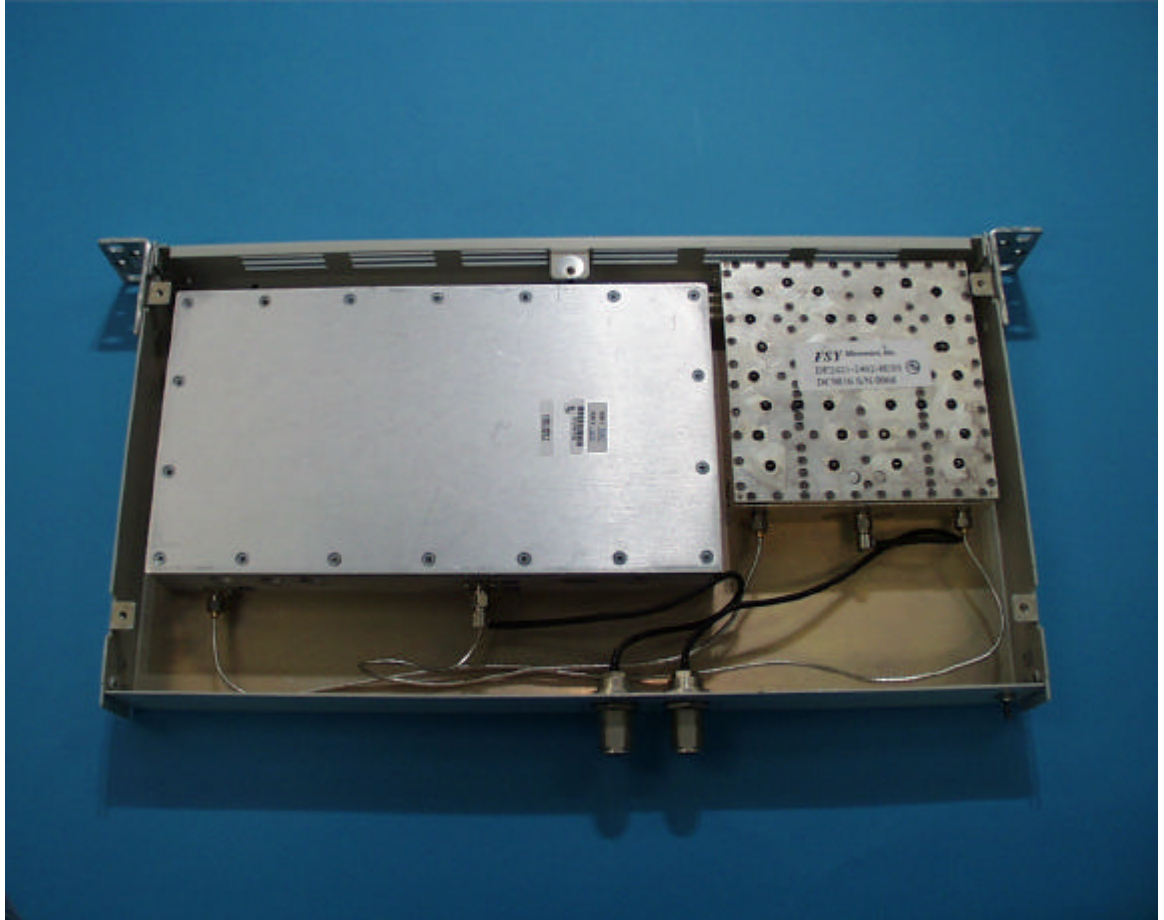
Photograph 4.1: Rack Mount Transmitter



Photograph 4.2: Rack Mount Transmitter Rear View



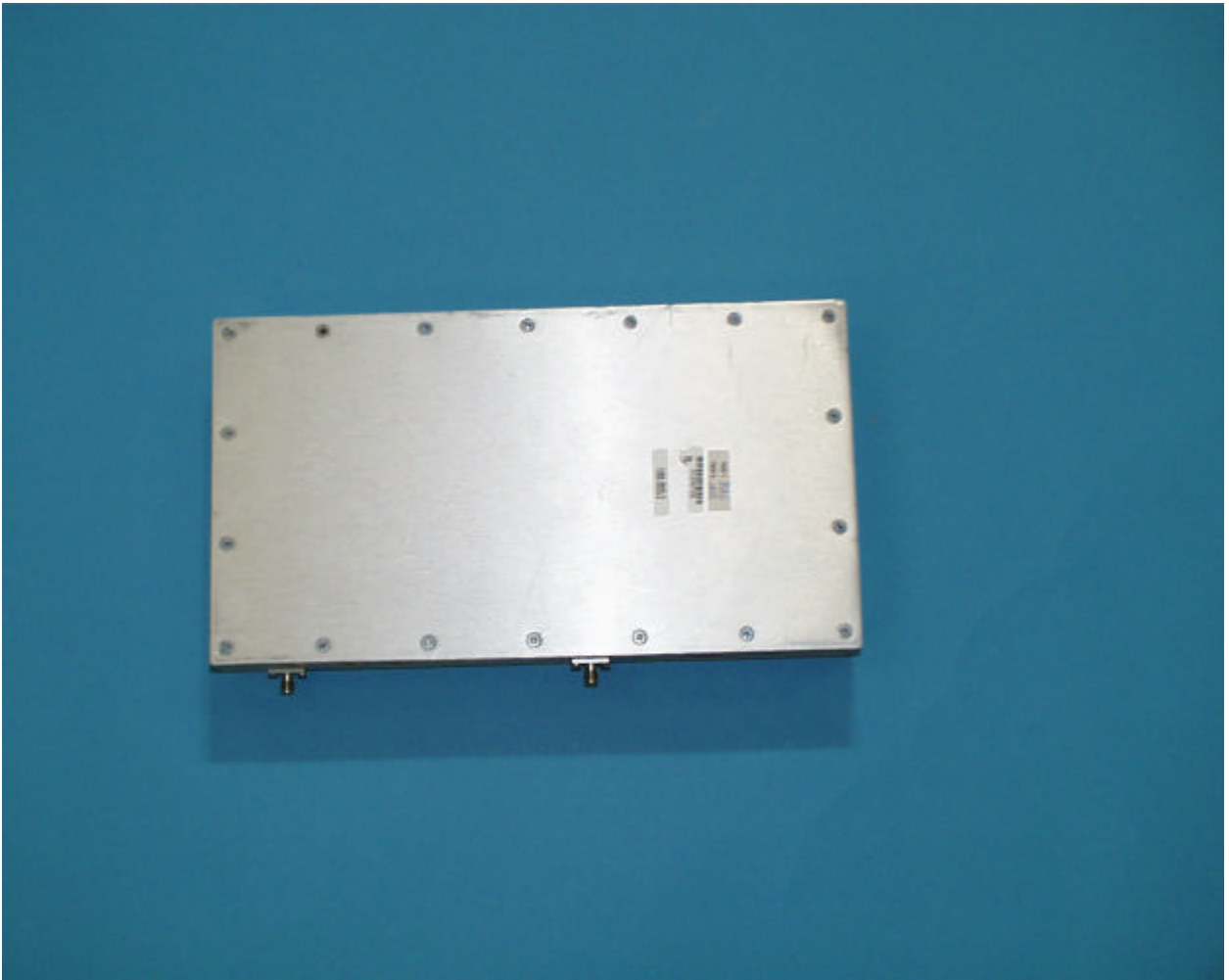
Photograph 4.3: Rack Mount Transmitter (housing removed) Top View



Photograph 4.4: RF Section Top View

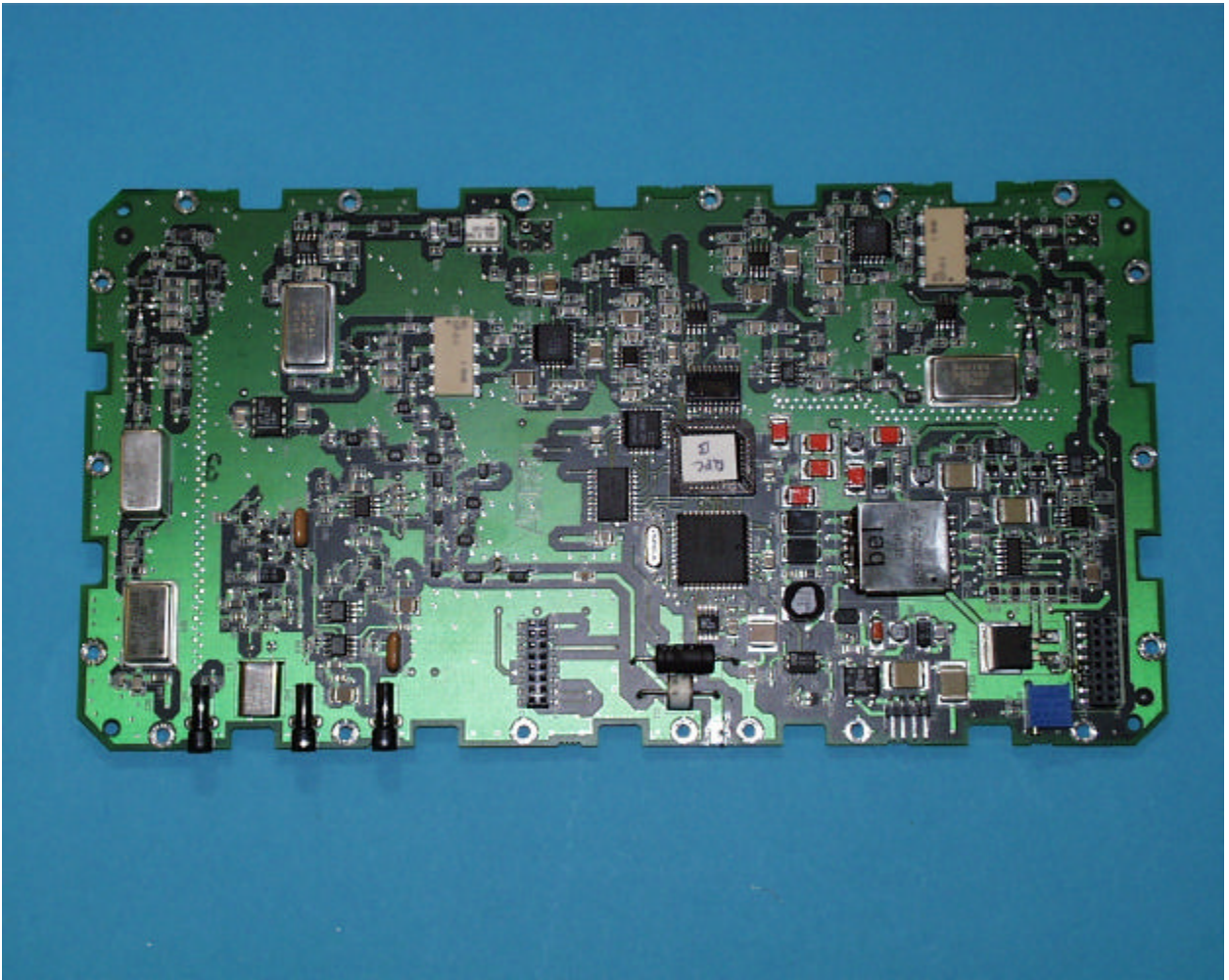


Photograph 4.5: RF Section Bottom View

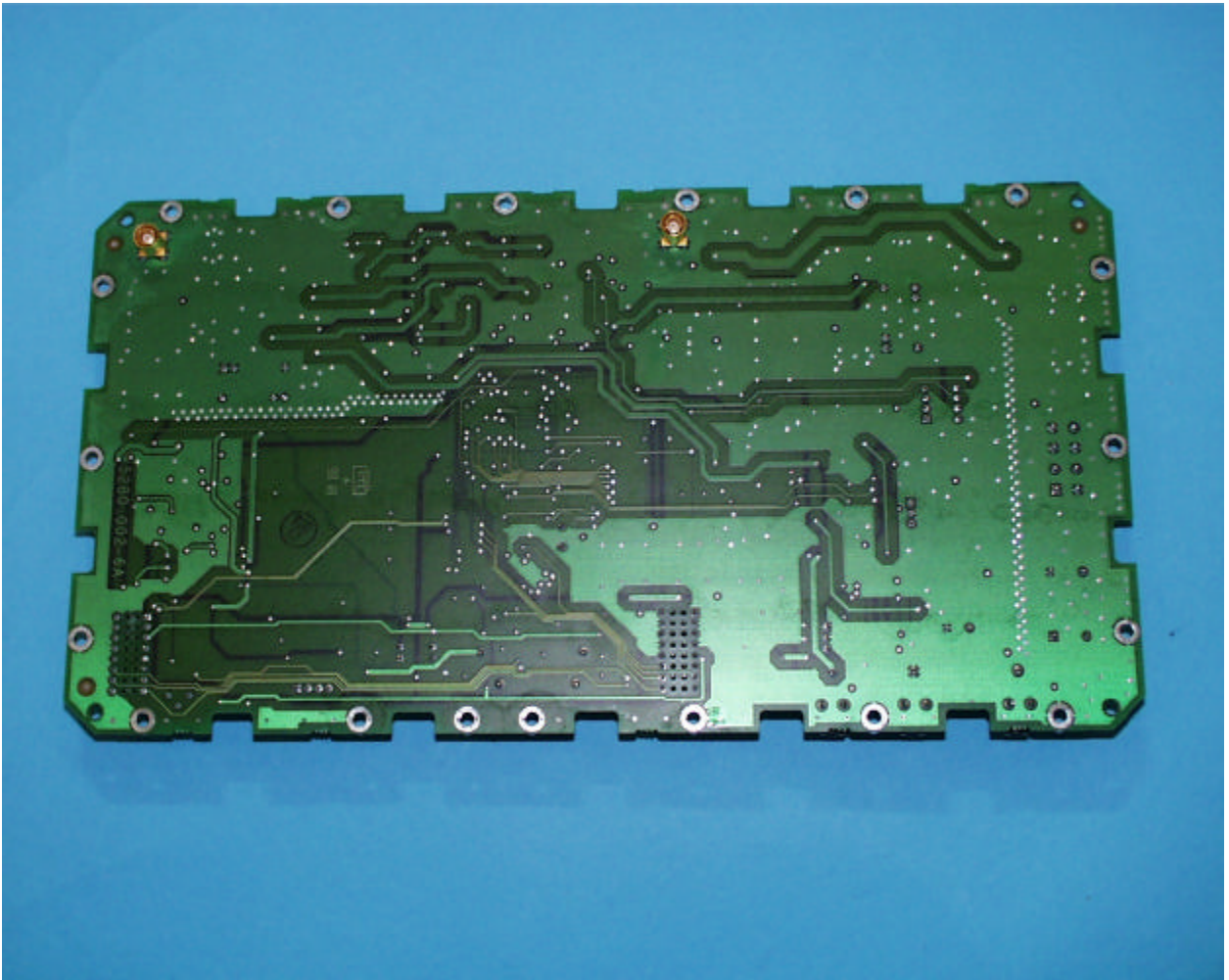




Photograph 4.6: RF Assembly/RF2 PCB Top View

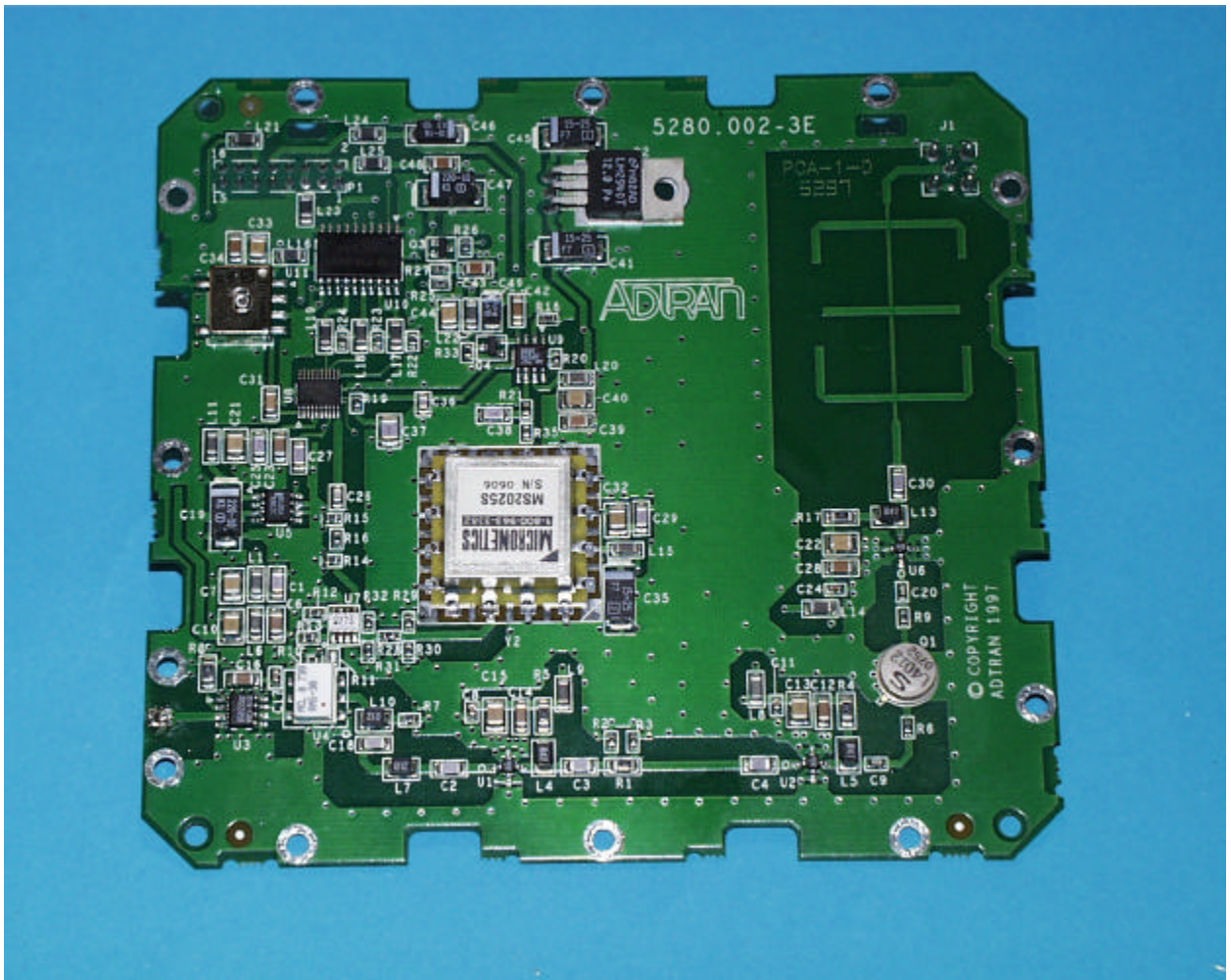


Photograph 4.7: RF Assembly/RF2 PCB Bottom View

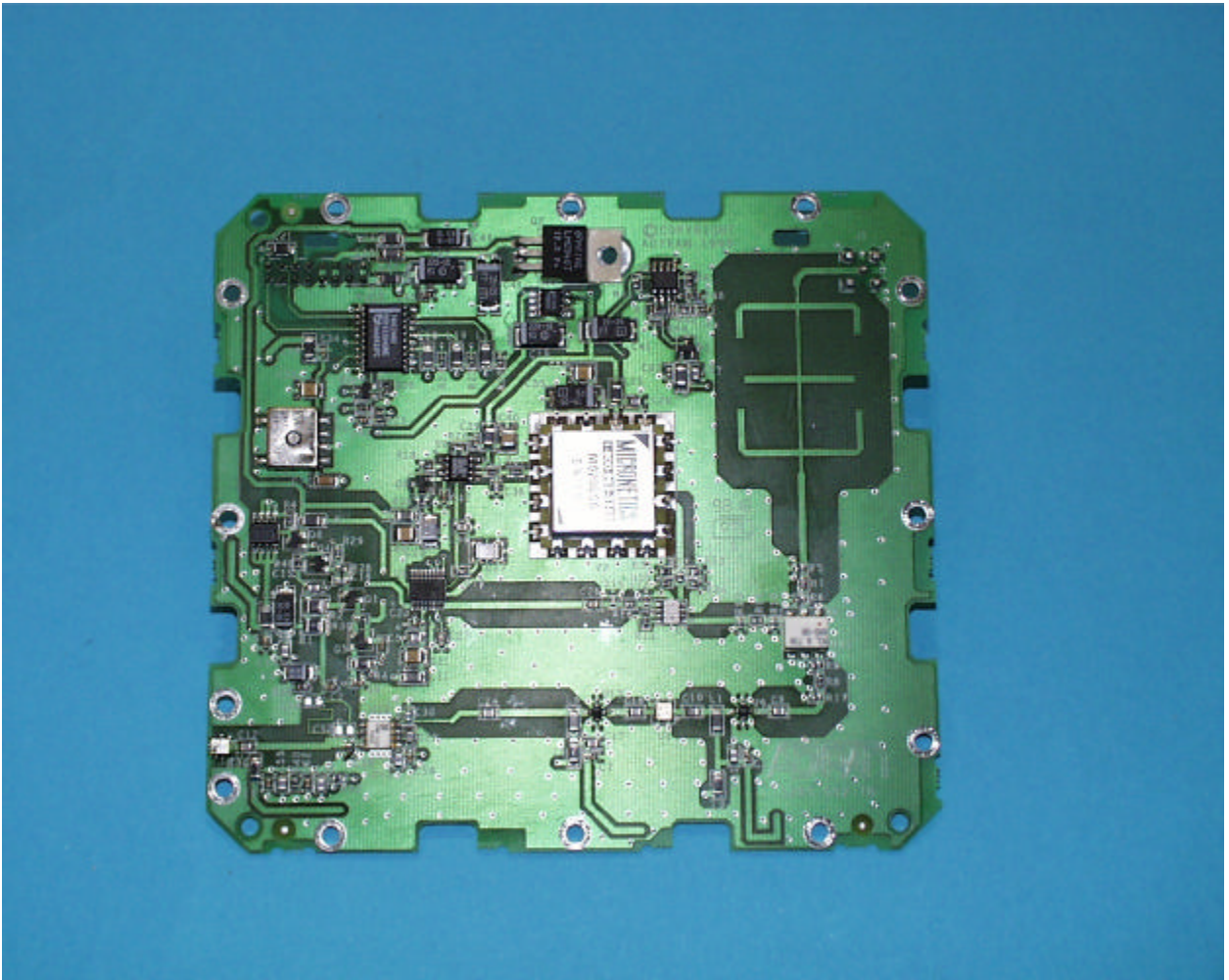




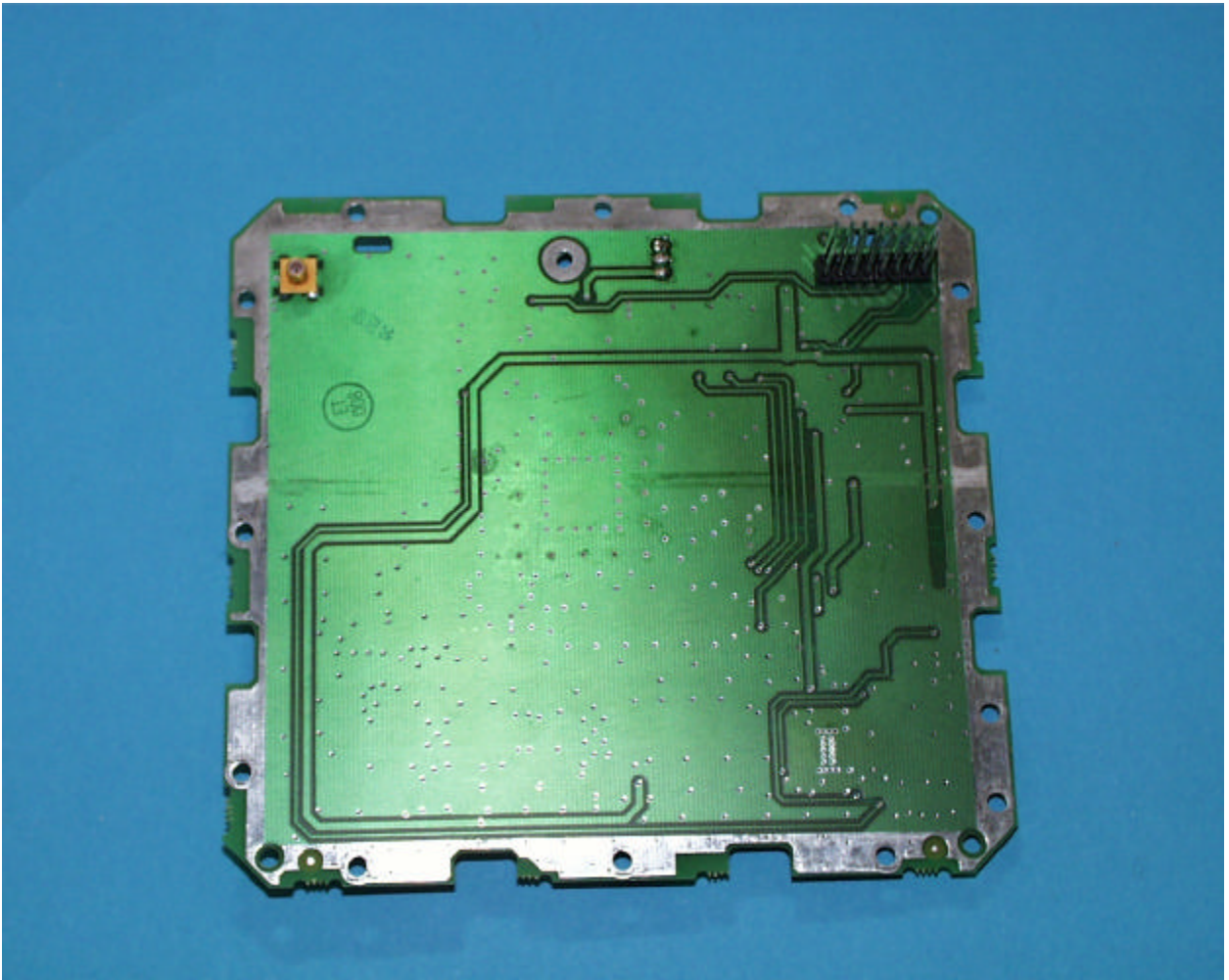
Photograph 4.8: RF Assembly TX/RX PCB Top View



Photograph 4.9: RF Assembly TX/RX PCB Top View (continued)

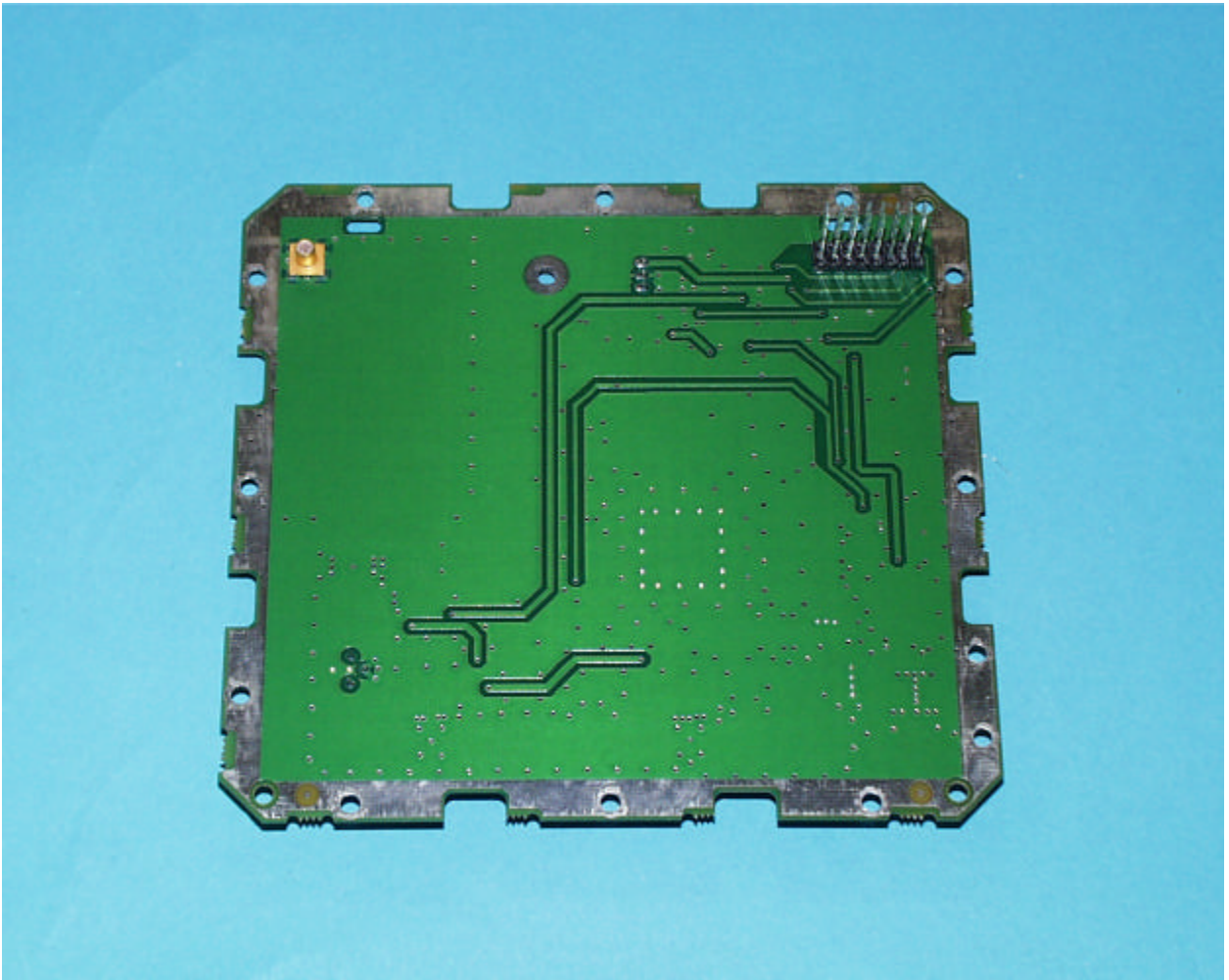


Photograph 4.10: RF Assembly TX/RX PCB Bottom View





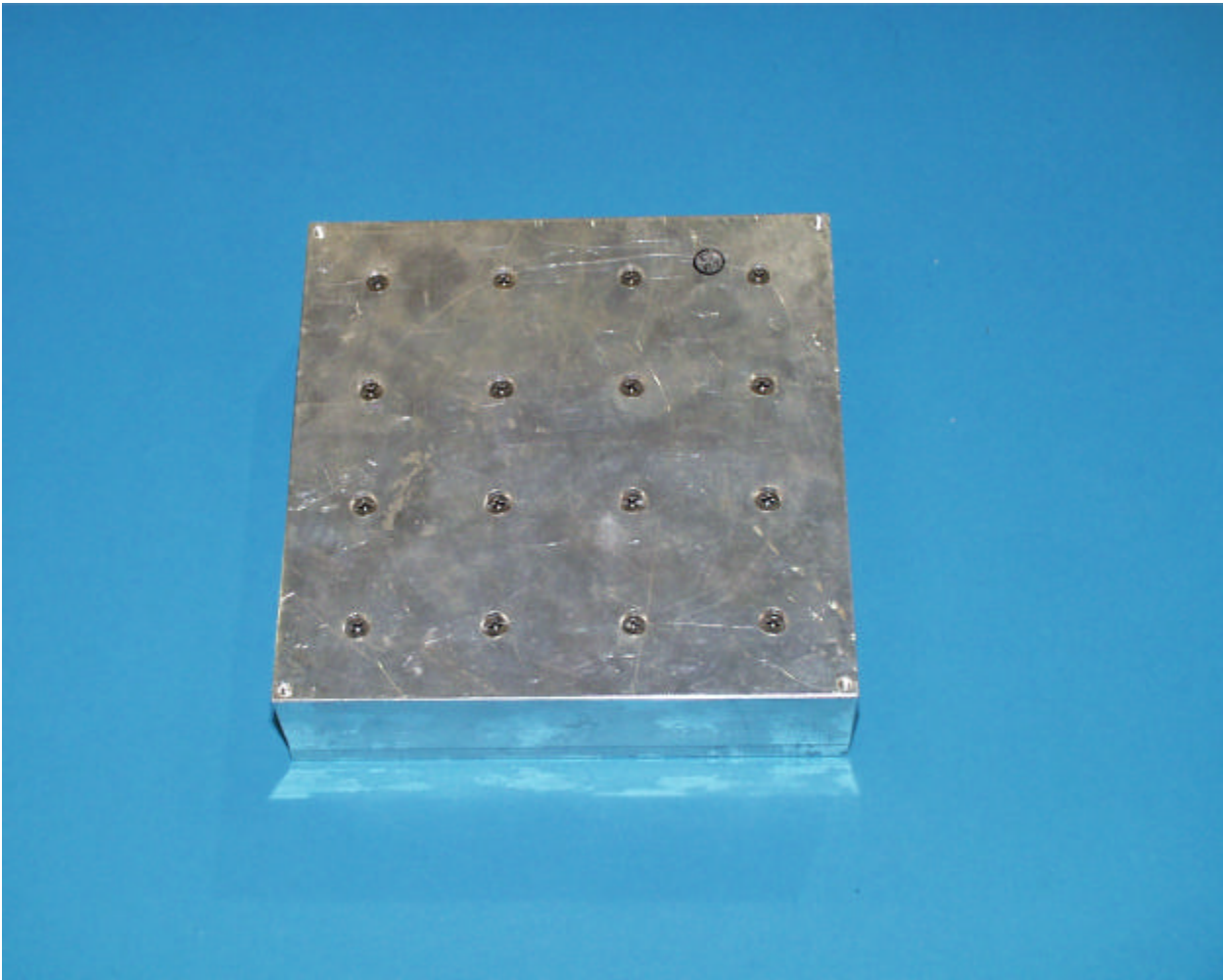
Photograph 4.11: RF Assembly TX/RX PCB Bottom View (continued)



Photograph 4.12: Diplexer/Filter Top View



Photograph 4.13: Diplexer Filter Bottom View





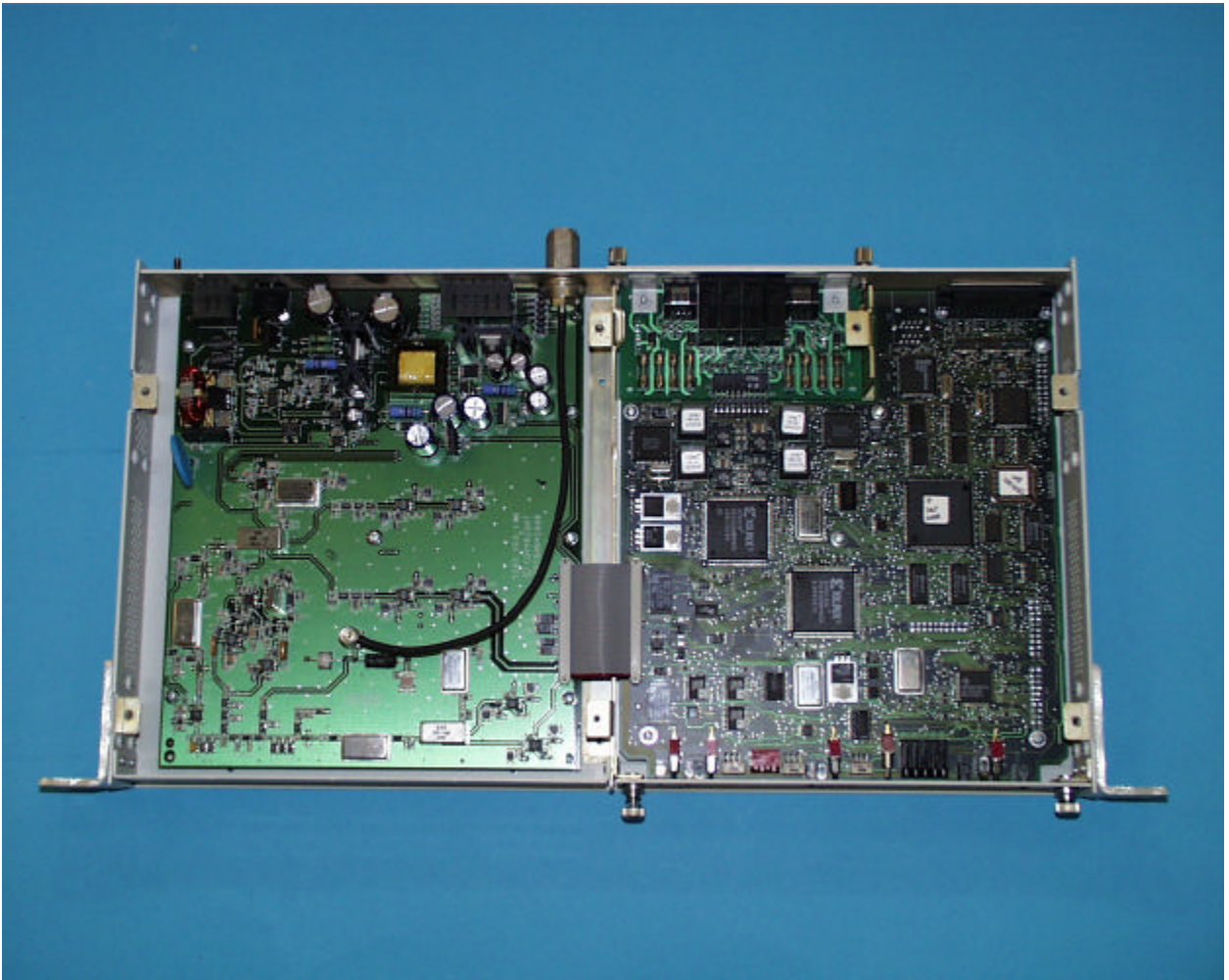
Photograph 4.14: Baseband Processor Assembly Front View



Photograph 4.15: Baseband Processor Back View

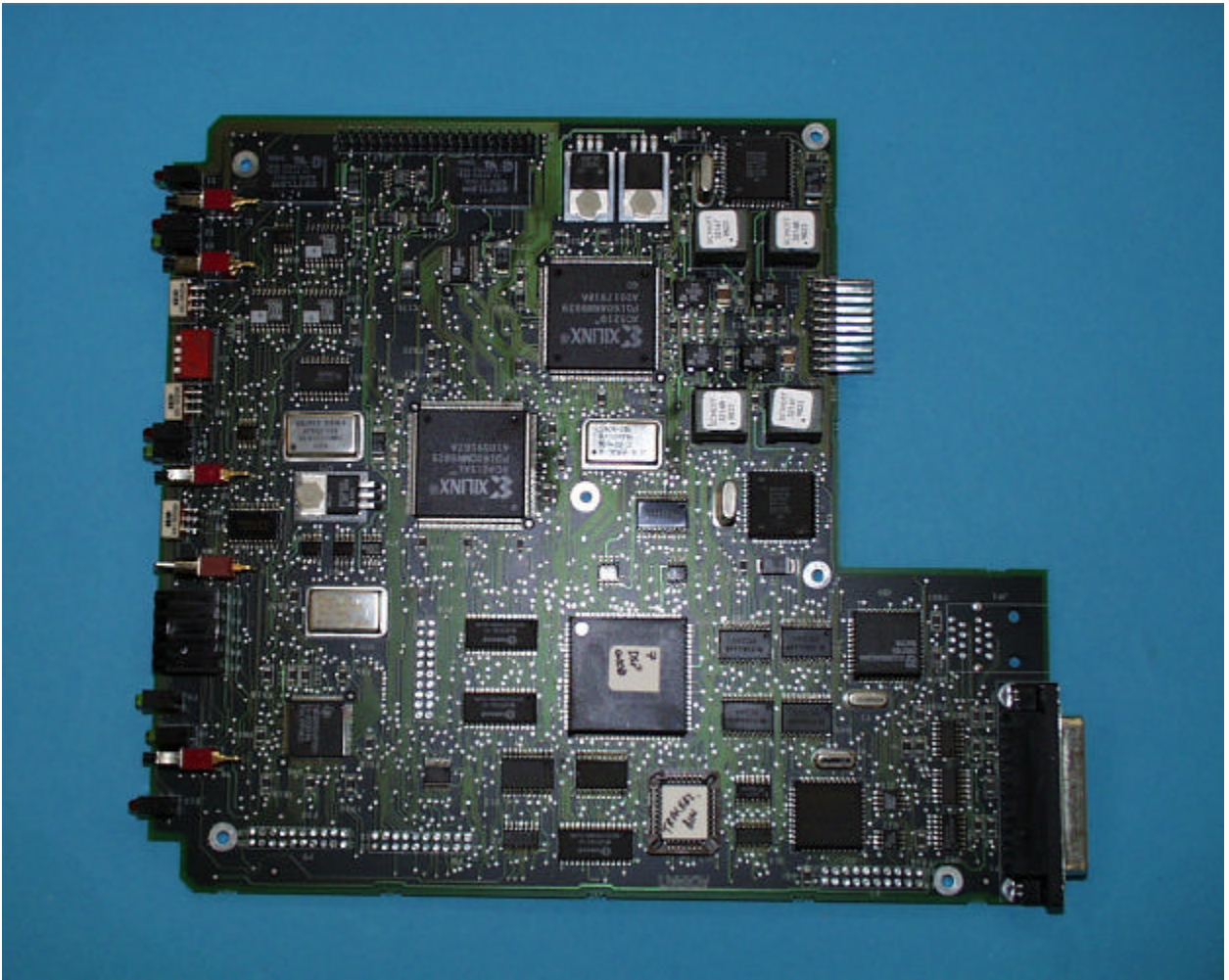


Photograph 4.16: Baseband Processor PCB

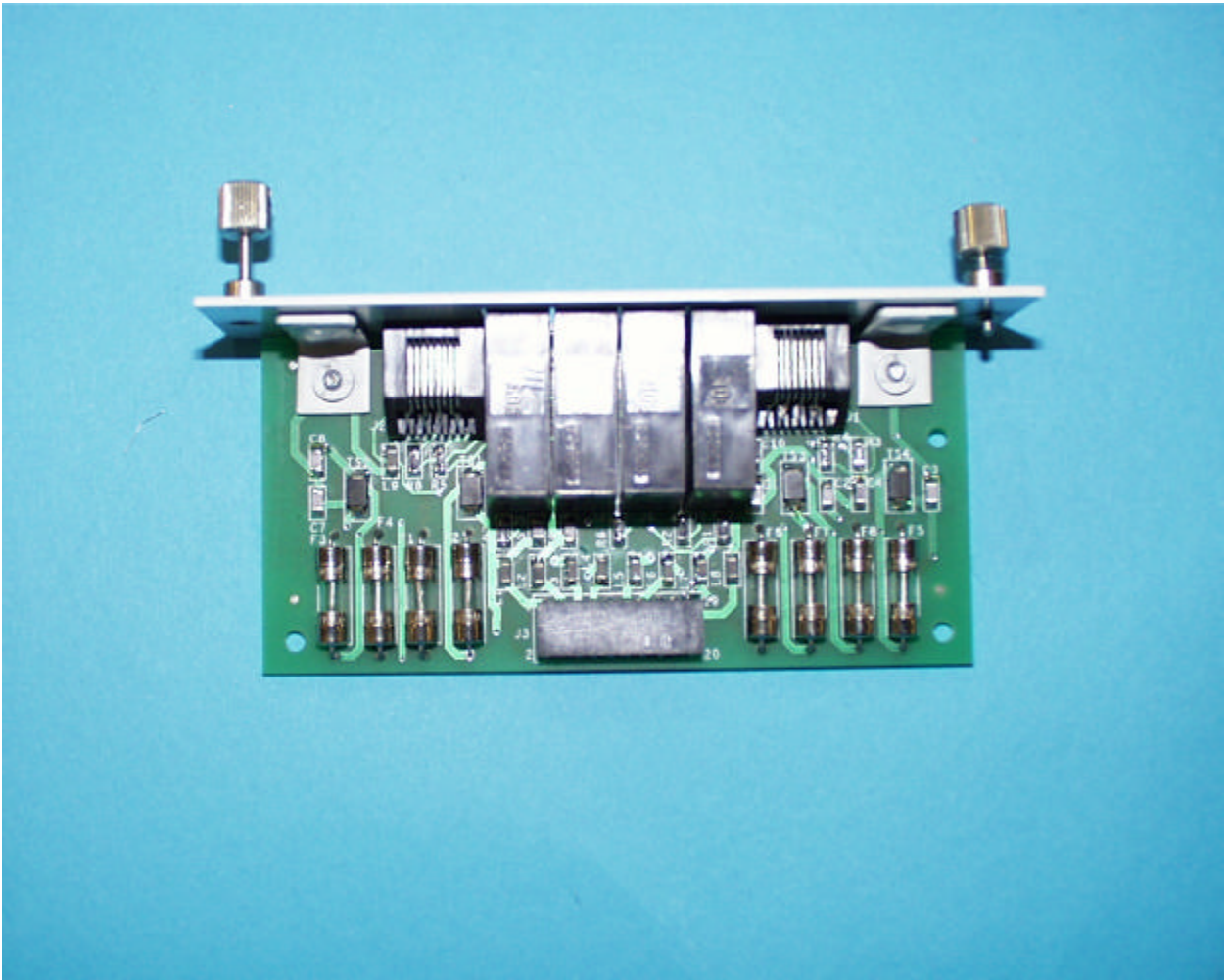




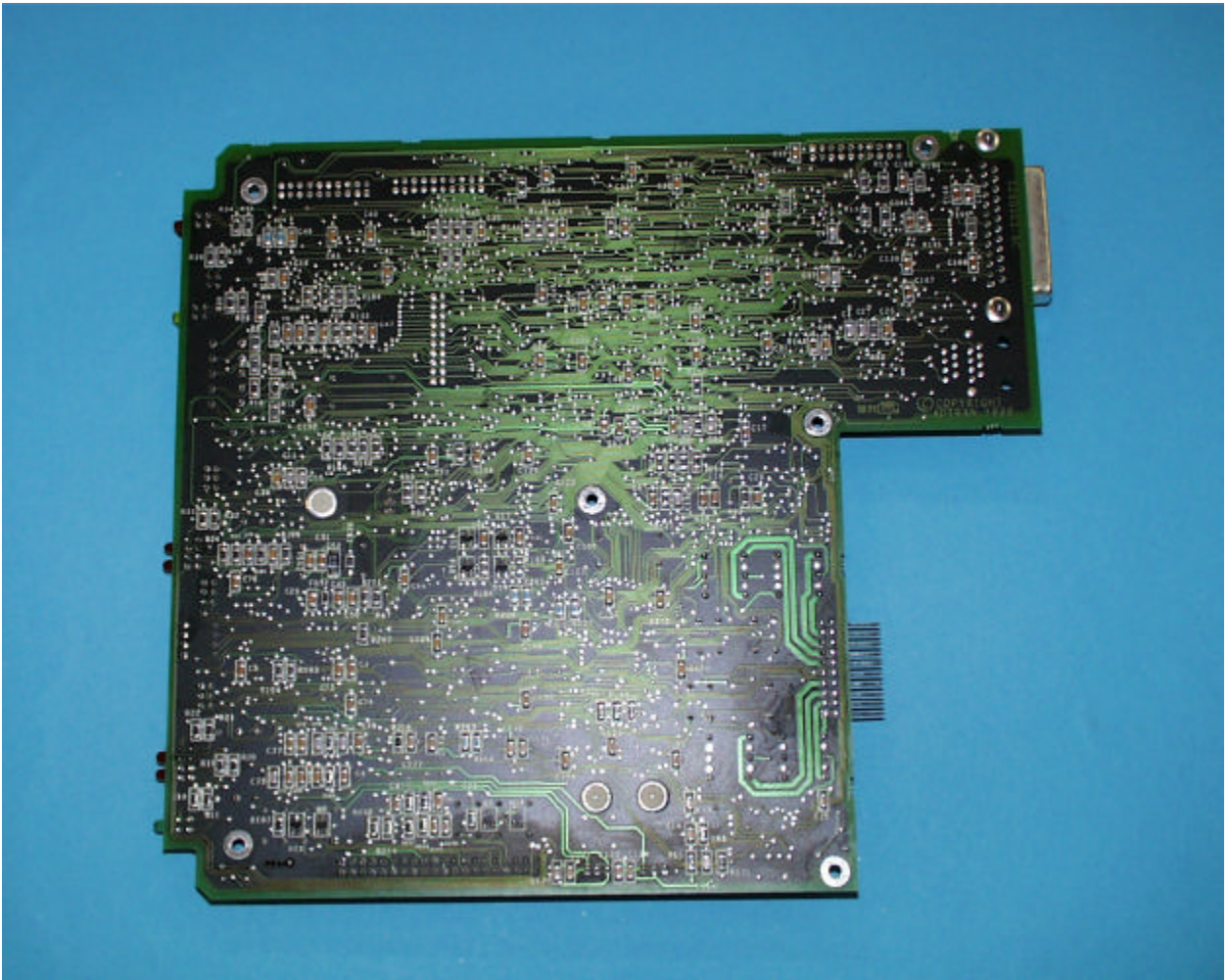
Photograph 4.17: Processor Board Top View



Photograph 4.18: Processor Board Top View (continued)

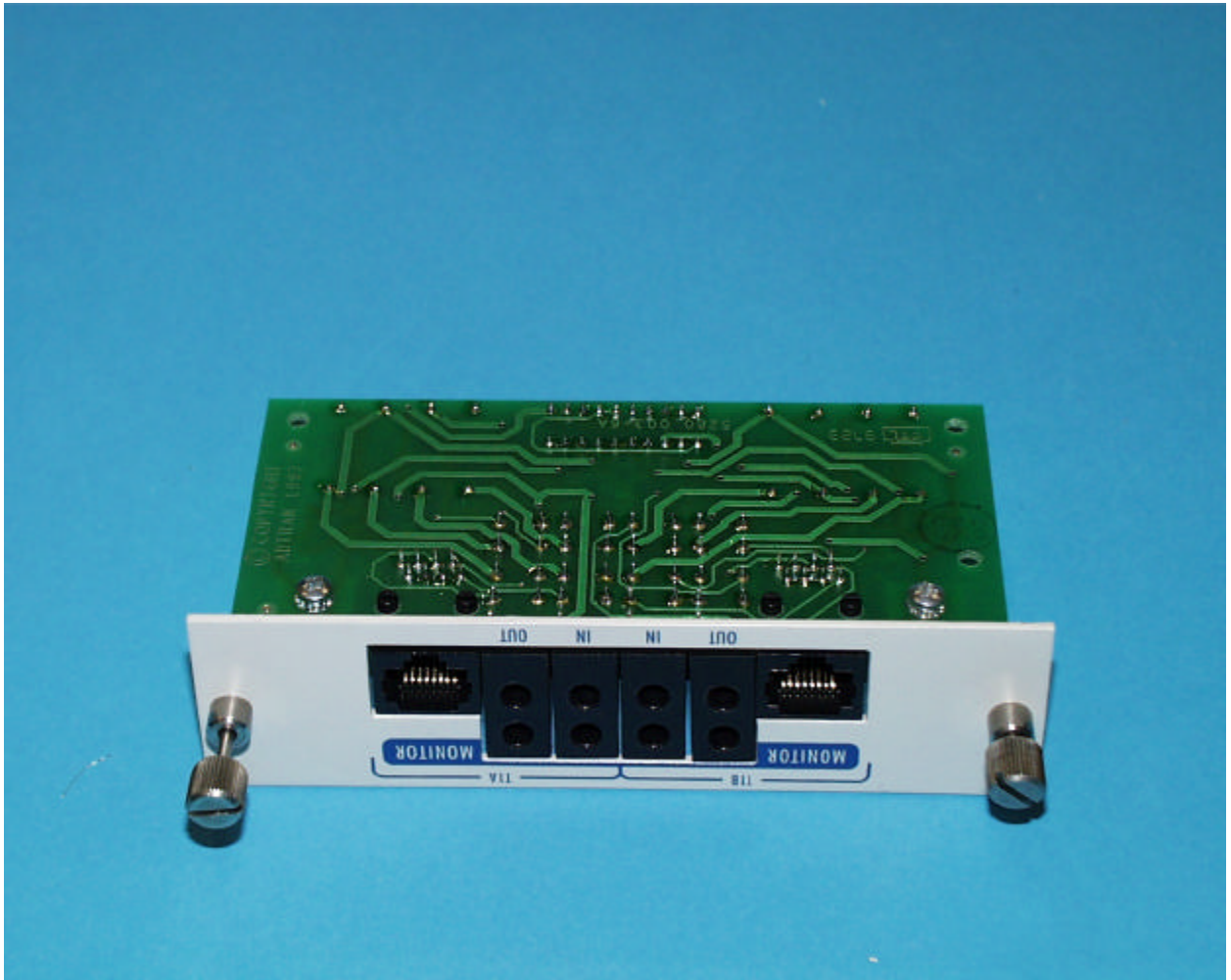


Photograph 4.19: Processor Board Bottom View

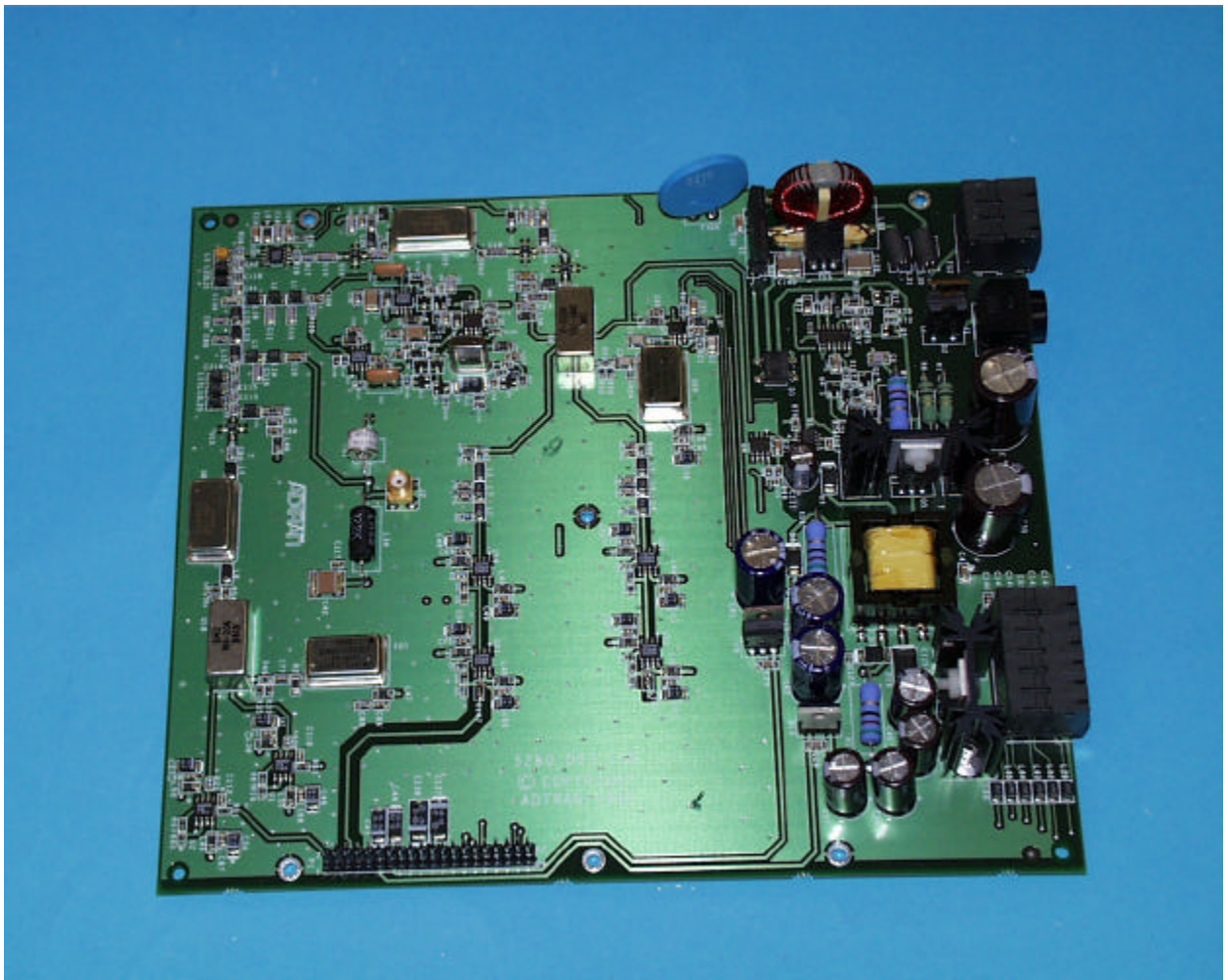




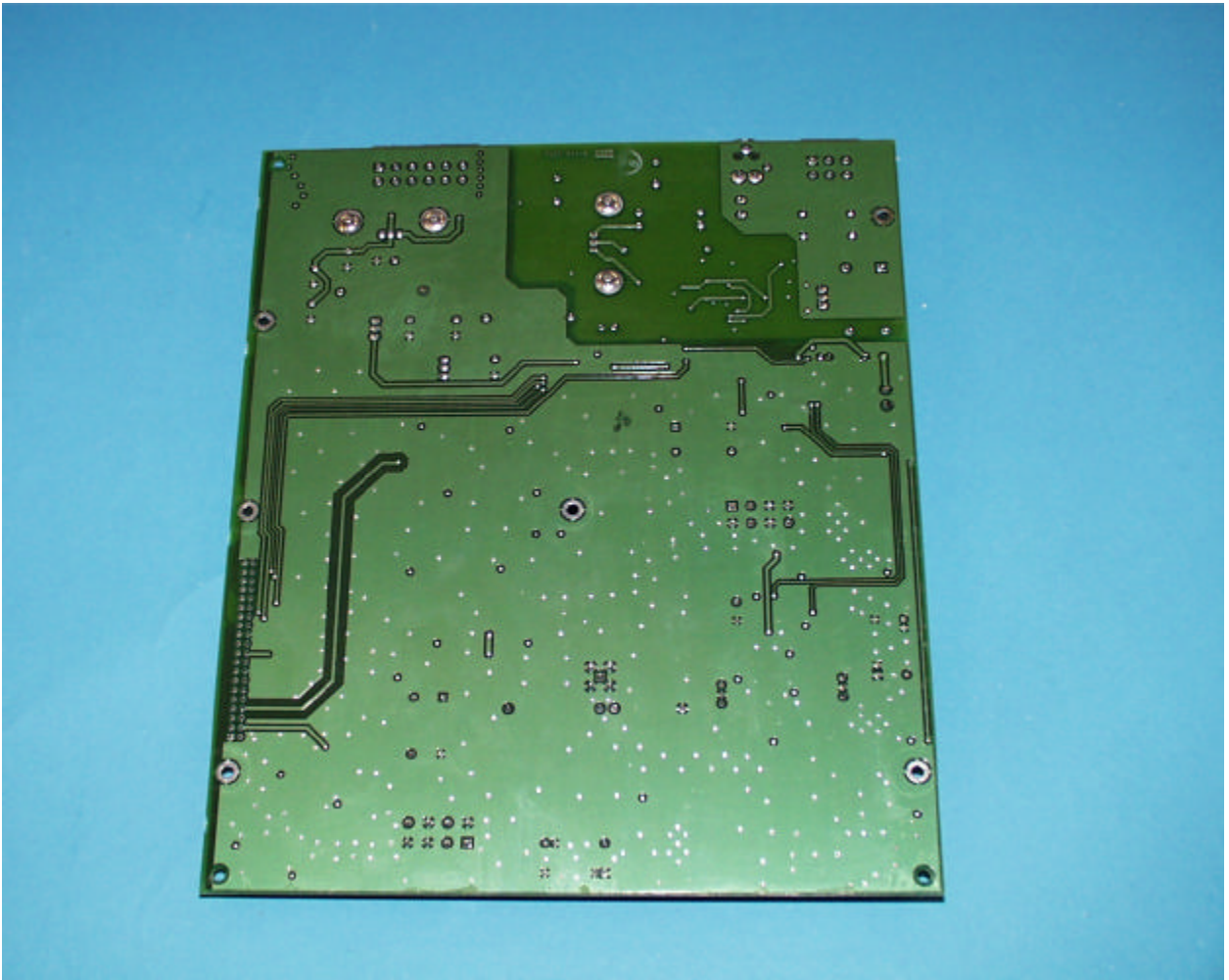
Photograph 4.20: Processor Board Bottom View (continued)



Photograph 4.21: IF Assembly Top View



Photograph 4.22: IF Assembly Bottom View



Photograph 4.23: Power Supply

