

안테나 특성 확인 결과

항목	결과
공중선의 종류 및 형태	PCB Antenna
공중선의 이득 및 지향 특성	2.4 GHz : 1.6 dBi, 5 GHz : 5.0 dBi 지향 특성 : 무지향성
공중선의 편파 특성	Linear
송신장치와의 접속형태	외장형
공중선의 제작자 및 모델명	Pulse® / R380500314
이득 측정기관명	RoHS COMPLIANT

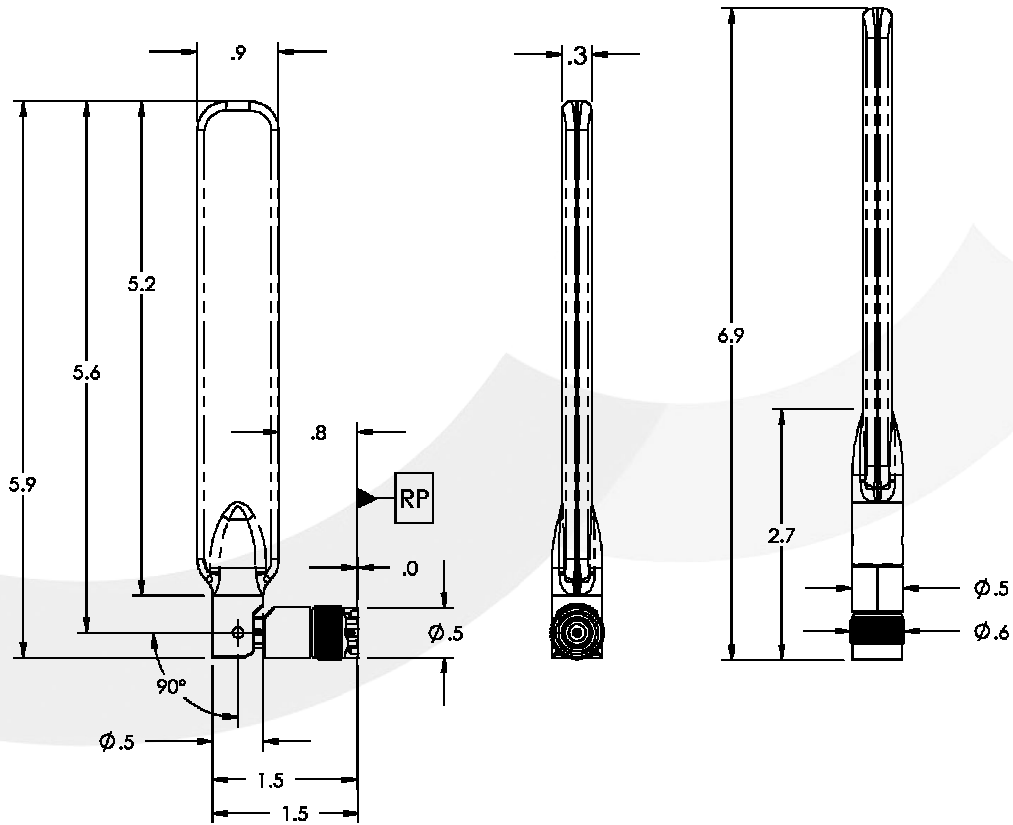
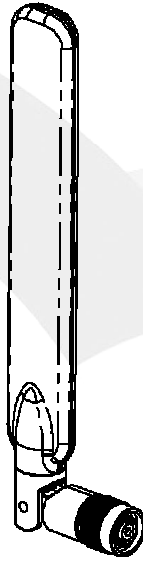


Dual Band Swivel Mount Dipole RP-TNC Blade

2.40-2.50/4.90-5.90 GHz

R380500314

Series : ANTENNA



All dimensions are inches

Issue : 0717

In the effort to improve our products, we reserve the right to make changes judged to be necessary.



Dual Band Swivel Mount Dipole RP-TNC Blade**2.40-2.50/4.90-5.90 GHz****R380500314**

Series : ANTENNA

ELECTRICAL SPECIFICATIONS

Frequency :	2.40-2.50/4.90-5.90 GHz
Nominal Impedance :	50 Ω
VSWR :	2:1 Max
Gain (Radiating element) :	1.6/5.0 dBi ± 1 dB
Radiation Pattern	
HPBW in Horizontal Plane :	360 ° ± 2 °
Ripple level in Horizontal Plane :	±3 dB Max
HPBW in Elevation	
Low Band :	85 °
High Band :	30 °
Polarization :	Linear Vertical
Connector type :	Reverse Polarity TNC
Cable type :	RG316

Dual Band Swivel Mount Dipole RP-TNC Blade**2.40-2.50/4.90-5.90 GHz****R380500314**

Series : ANTENNA

MECHANICAL SPECIFICATIONS

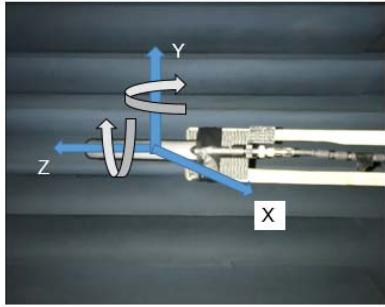
Plastic radome :	ABS+PC
Color :	Black
Flammability Rating :	V-0 UL 94
Weight :	1.2 oz
Overall length :	6.9 Inches
	Bent
	5.9 Inches
Fixing system :	
Azimuth adjustment	° ± 4°
Elevation adjustment	° ± 4°

ENVIRONMENTAL SPECIFICATIONS

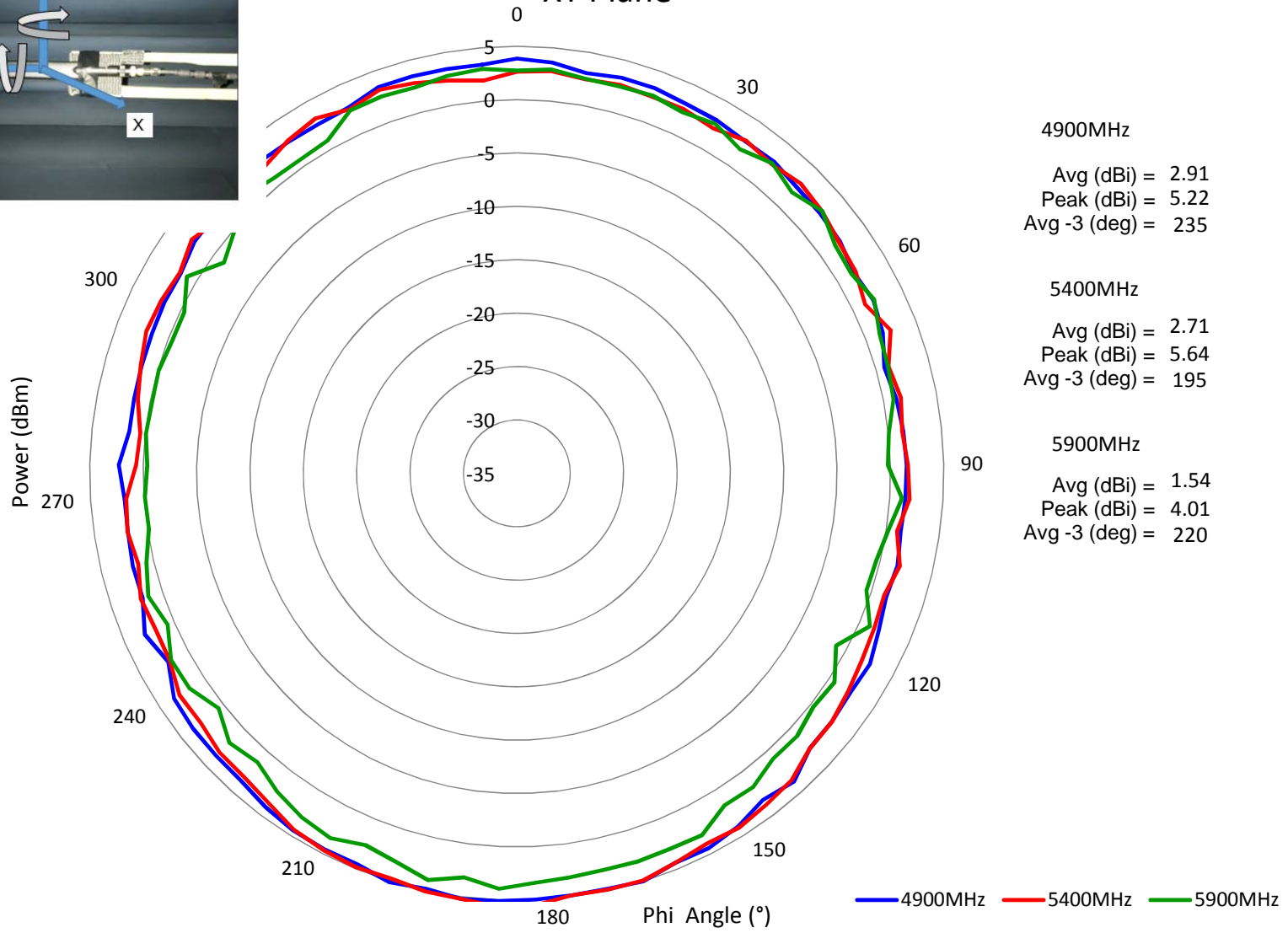
Operating temperature :	-30/+70 ° C
Storage temperature :	-40/+85 ° C
Humidity :	95% @ 24° C

OTHER SPECIFICATIONS

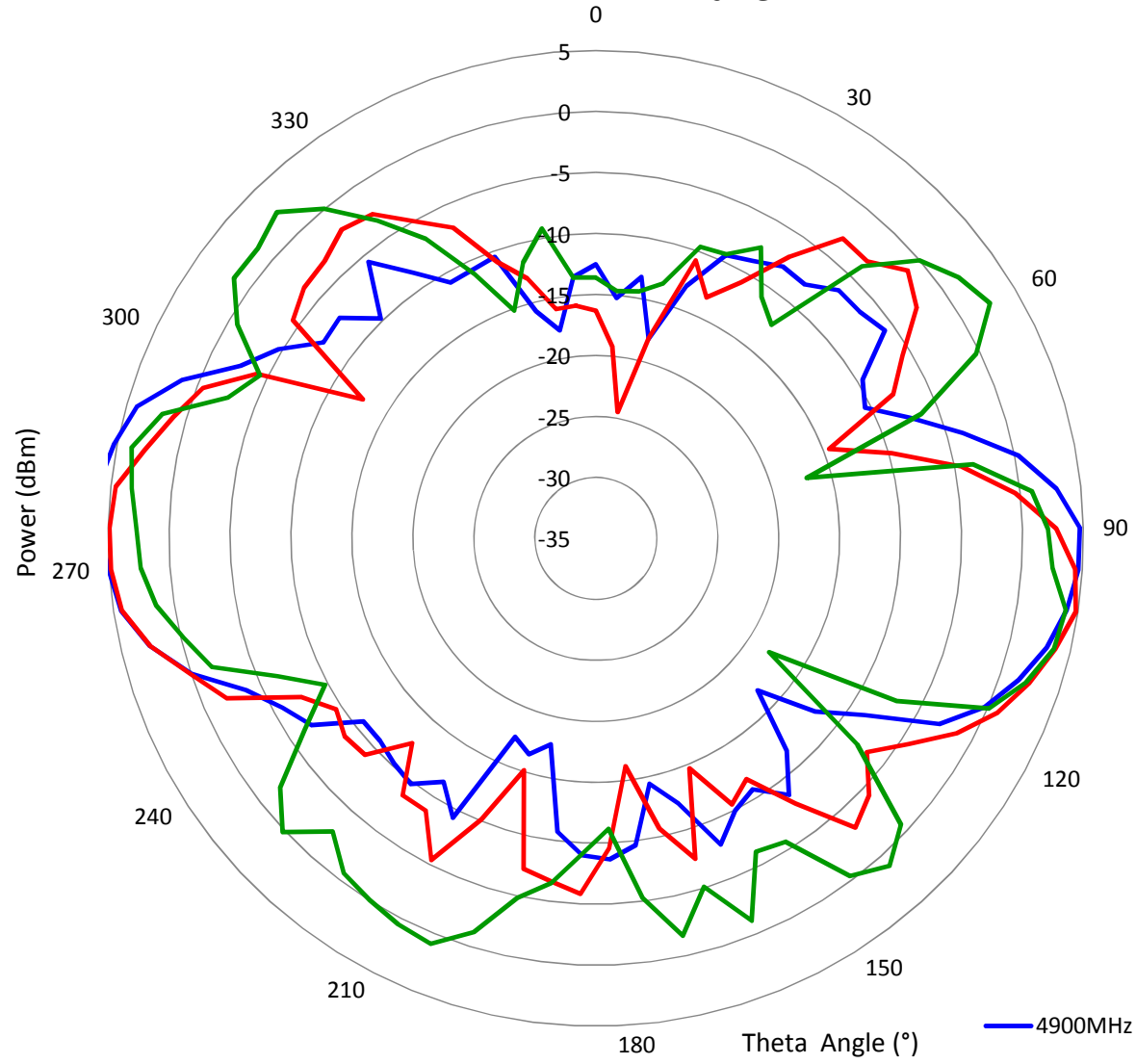
HORN



XY Plane



ZX Plane



4900MHz
Avg (dBi) = -6.98
Peak (dBi) = 6.07
Avg -3 (deg) = 20

5400MHz
Avg (dBi) = -6.23
Peak (dBi) = 4.9
Avg -3 (deg) = 25

5900MHz
Avg (dBi) = -4.02
Peak (dBi) = 3.99
Avg -3 (deg) = 40

— 4900MHz — 5400MHz — 5900MHz

