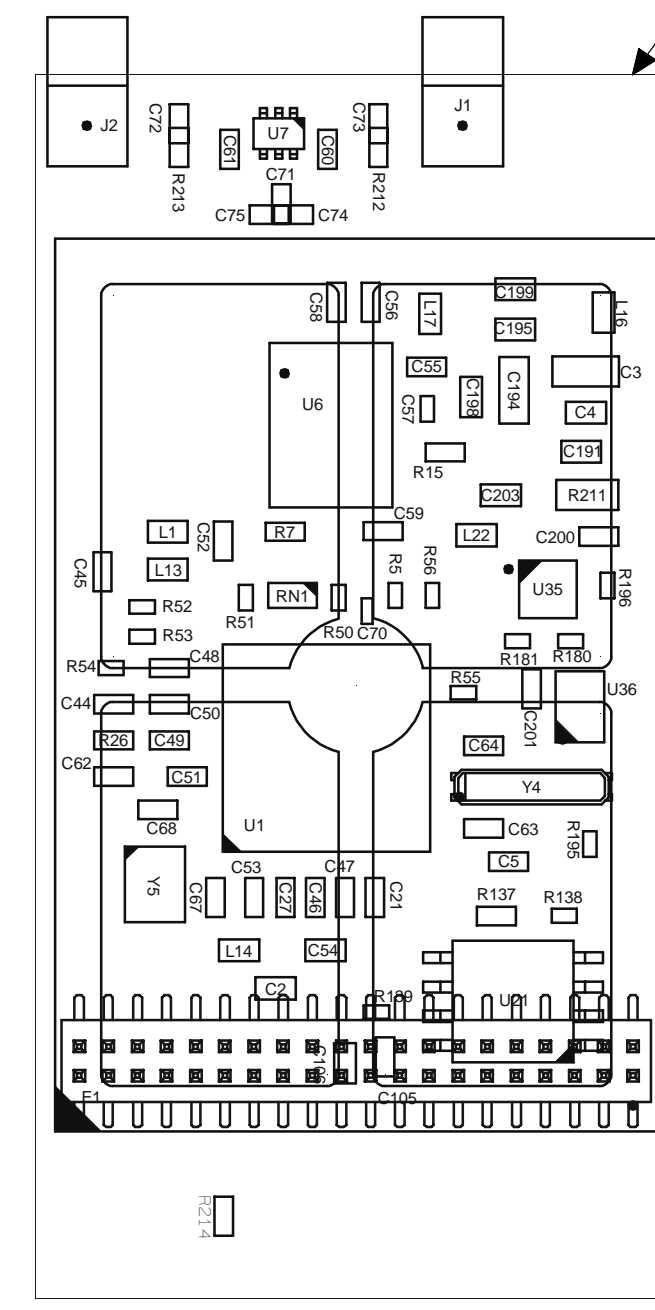
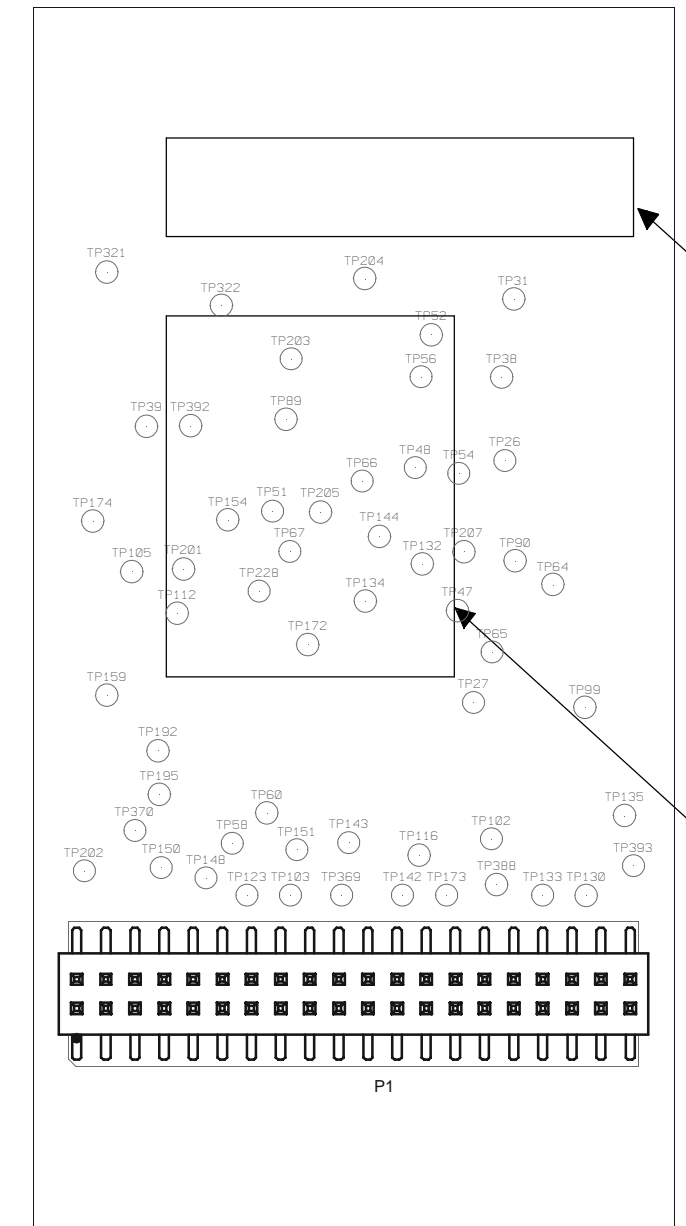


HONEYWELL PART NO.	CONFIGURATION (REF)
2331D0317	SINGLE BOARD

CAD MAINTAINED. CHANGES SHALL BE INCORPORATED BY THE CURRENT DESIGN ACTIVITY		
REVISION HISTORY - ALL SHEETS ARE THE SAME REVISION		
REV	DESCRIPTION	DATE
1	PREVIOUS RELEASE OF DRAWING	09FEB2018



Assy_top



Assy_bot

NOTES:

1. FINISH ALL PCB BREAKOUTS FLUSH TO +0.2/-0.1.
2. PCB TO BE PRODUCED IN ACCORDANCE WITH IPC-A-610 CLASS 2.
3. ESD CONTROLS AND PACKAGING TO BE IN ACCORDANCE WITH IEC61340-5-1 AND IEC61340-5-2.
QUANTITY PER CONTAINER TO BE AGREED BETWEEN SUPPLIER AND HONEYWELL.

4. LABEL REQUIREMENTS

TO READ LAST 4 DIGITS OF PART NUMBER/WEEK/YEAR/UNIQUE SERIAL IN 2D BARCODE
 XXXXXXXX ← UNIQUE SERIAL No 4 CHAR
 WEEK No 2 CHAR YEAR 2 CHAR

FIT PART NUMBER LABEL IN A SUITABLE POSITION TO READ:

XXXXBXXXX ← PART No
 ISSUE ISS X

LABEL MAY BE INCORPORATED INTO BARCODE LABEL IF REQUIRED.
 LABEL TO BE INDELIBLY MARKED.

5. CONFORMITY LABEL REQUIREMENTS

FIT FCC CONFORMITY LABEL IN POSITION AS SHOWN.

LABEL CONTENS:

NAME: Search Platform Wireless Module
 FCC: HD5-SFPMB
 IC:1693B-SFPMB
 HVIN: Rev 4

LABEL TO BE INDELIBLY MARKED.

6. FINISHED ASSEMBLY TO BE RoHS COMPLIANT.

D
C
B
A

D
C
B
A

		HONEYWELL CONFIDENTIAL AND PROPRIETARY		HONEYWELL INTERNATIONAL INC. Honeywell	
		DIMENSIONS ARE IN: INCH TOLERANCES: .00 +/- 0.01 AND .000 +/- 0.010		HONEYWELL ANALYTICS	
		DRAWN BY: M.KOUTNY 25SEP2018		NAME: PCB SEARCH PLATFORM WIRELESS ASSEMBLY	
		DESIGNER: M. BOHUS 25SEP2018			
		APPROVER: R. STUPKA 25SEP2018			
PWA NUMBER:		THIRD ANGLE PROJECTION		SIZE: D	CAGE CODE: NA
PWB NUMBER:				DWG NO: 2331A0315	REV: 2
OS NUMBER:				ECO: A05173	
NEXT ASSY:		PROJECT NUMBER: 723611		SCALE: NA	WT: NA
INITIAL APPLICATION				SHEET 1 OF 1	

EXPEDITION