

Test Laboratory: Huatongwei International Inspection Co., Ltd.,SAR Lab

Date: 9/25/2018

**GSM 850-Head**

Communication System: UID 0, Generic GPRS(TDMA, GMSK, TN 0-1-2-3) (0); Frequency: 836.6 MHz;Duty Cycle: 1:2.00447

Medium parameters used (interpolated):  $f = 836.6$  MHz;  $\sigma = 0.933$  S/m;  $\epsilon_r = 42.599$ ;  $\rho = 1000$  kg/m<sup>3</sup>

Phantom section: Left Section

Ambient Temperature:22.7°C;Liquid Temperature:22.3°C;

DASY Configuration:

- Probe: EX3DV4 - SN7494; ConvF(10.73, 10.73, 10.73) @ 836.6 MHz; Calibrated: 2/26/2018
- Sensor-Surface: 1.4mm (Mechanical Surface Detection)
- Electronics: DAE4 Sn1549; Calibrated: 4/25/2018
- Phantom: Twin-SAM V8.0 ; Type: QD 000 P41 AA; Serial: 1974
- DASY52 52.10.1(1476); SEMCAD X 14.6.11(7439)

**Left Touch Cheek/CH 190/Area Scan (61x121x1):** Interpolated grid: dx=1.500 mm, dy=1.500 mm

Maximum value of SAR (interpolated) = 0.266 W/kg

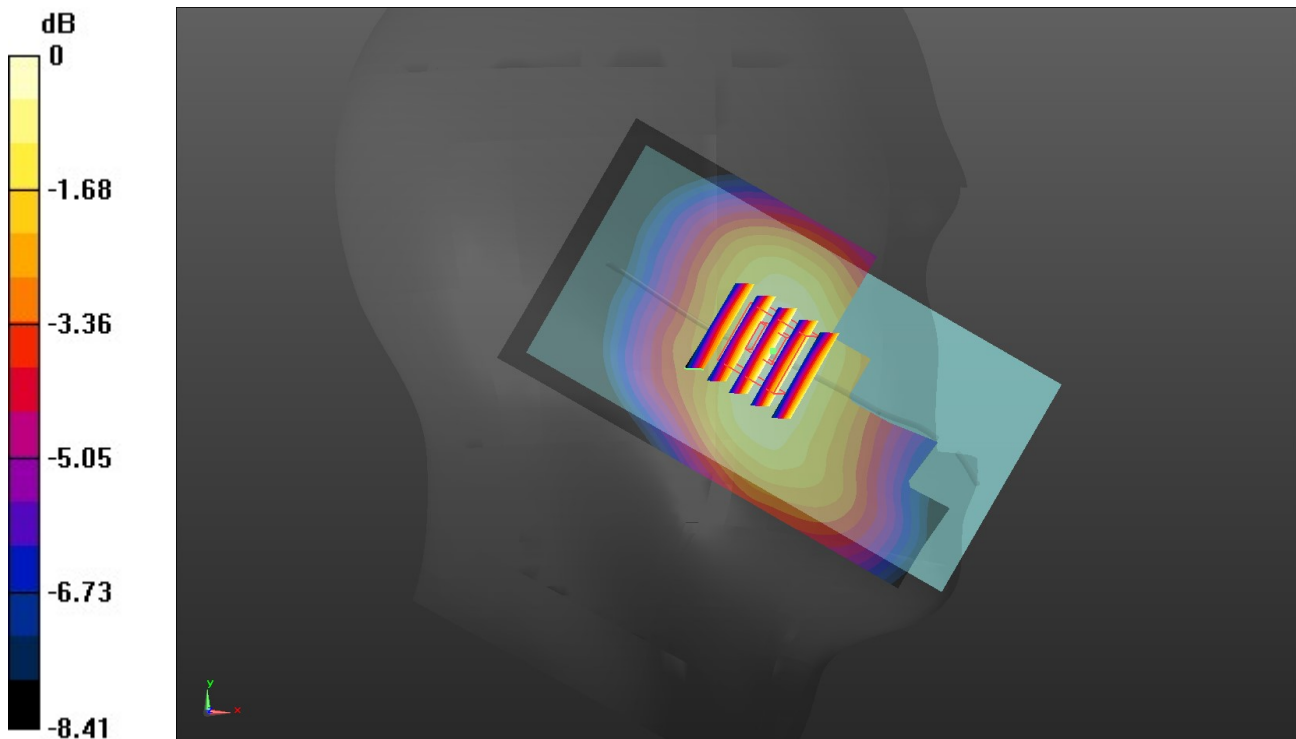
**Left Touch Cheek/CH 190/Zoom Scan (5x5x7)/Cube 0:** Measurement grid: dx=8mm, dy=8mm, dz=5mm

Reference Value = 5.784 V/m; Power Drift = -0.16 dB

Peak SAR (extrapolated) = 0.286 W/kg

**SAR(1 g) = 0.218 W/kg; SAR(10 g) = 0.164 W/kg**

Maximum value of SAR (measured) = 0.261 W/kg



0 dB = 0.261 W/kg = -5.83 dBW/kg

Test Laboratory: Huatongwei International Inspection Co., Ltd.,SAR Lab

Date: 9/26/2018

**GSM 850-Body**

Communication System: UID 0, Generic GPRS(TDMA, GMSK, TN 0-1-2-3) (0); Frequency: 836.6 MHz;Duty Cycle: 1:2.00447

Medium parameters used (interpolated):  $f = 836.6$  MHz;  $\sigma = 0.967$  S/m;  $\epsilon_r = 55.399$ ;  $\rho = 1000$  kg/m<sup>3</sup>

Phantom section: Flat Section

Ambient Temperature:22.7°C;Liquid Temperature:22.3°C;

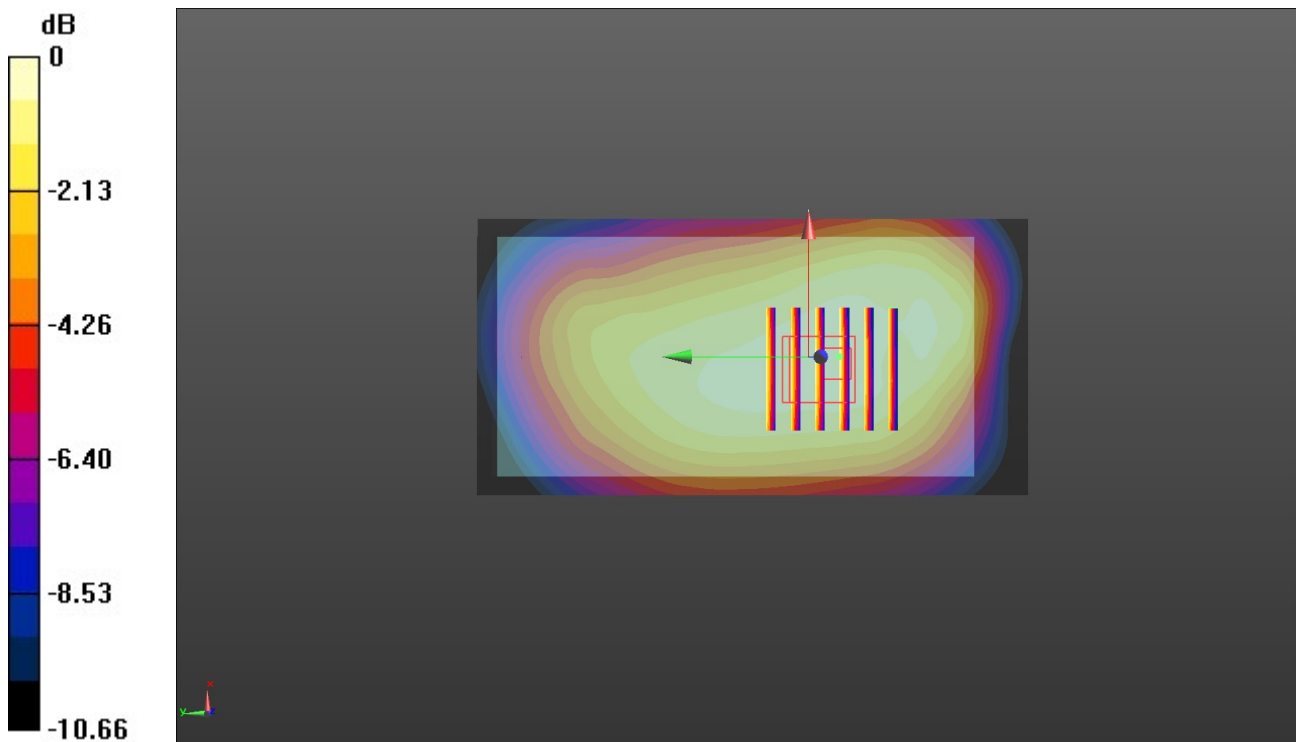
DASY Configuration:

- Probe: EX3DV4 - SN7494; ConvF(10.5, 10.5, 10.5) @ 836.6 MHz; Calibrated: 2/26/2018
- Sensor-Surface: 1.4mm (Mechanical Surface Detection)
- Electronics: DAE4 Sn1549; Calibrated: 4/25/2018
- Phantom: ELI V8.0 ; Type: QD OVA 004 AA ; Serial: 2078
- DASY52 52.10.1(1476); SEMCAD X 14.6.11(7439)

**Rear/CH 190/Area Scan (61x121x1):** Interpolated grid: dx=1.500 mm, dy=1.500 mm  
Maximum value of SAR (interpolated) = 0.392 W/kg

**Rear/CH 190/Zoom Scan (6x6x7)/Cube 0:** Measurement grid: dx=8mm, dy=8mm, dz=5mm  
Reference Value = 19.47 V/m; Power Drift = 0.17 dB  
Peak SAR (extrapolated) = 0.459 W/kg  
**SAR(1 g) = 0.293 W/kg; SAR(10 g) = 0.213 W/kg**

Maximum value of SAR (measured) = 0.390 W/kg



0 dB = 0.390 W/kg = -4.09 dBW/kg

Test Laboratory: Huatongwei International Inspection Co., Ltd.,SAR Lab

Date: 9/27/2018

**GSM 1900-Head**

Communication System: UID 0, Generic GPRS(TDMA, GMSK, TN 0-1-2-3) (0); Frequency: 1880 MHz;Duty Cycle: 1:2.00447

Medium parameters used:  $f = 1880$  MHz;  $\sigma = 1.455$  S/m;  $\epsilon_r = 41.738$ ;  $\rho = 1000$  kg/m<sup>3</sup>

Phantom section: Left Section

Ambient Temperature:22.6°C;Liquid Temperature:22.2°C;

DASY Configuration:

- Probe: EX3DV4 - SN7494; ConvF(8.83, 8.83, 8.83) @ 1880 MHz; Calibrated: 2/26/2018
- Sensor-Surface: 1.4mm (Mechanical Surface Detection)
- Electronics: DAE4 Sn1549; Calibrated: 4/25/2018
- Phantom: Twin-SAM V8.0 ; Type: QD 000 P41 AA; Serial: 1974
- DASY52 52.10.1(1476); SEMCAD X 14.6.11(7439)

**Left Touch Cheek/CH 661/Area Scan (61x121x1):** Interpolated grid: dx=1.500 mm, dy=1.500 mm

Maximum value of SAR (interpolated) = 0.370 W/kg

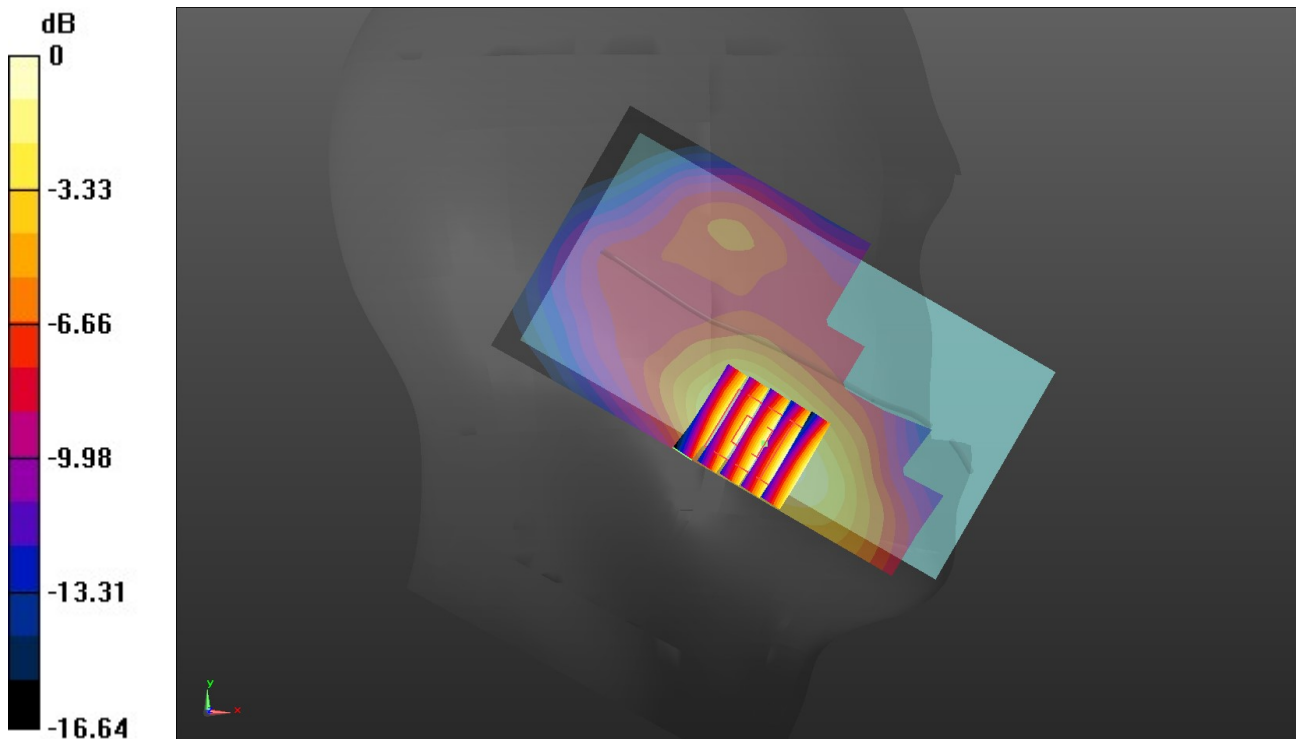
**Left Touch Cheek/CH 661/Zoom Scan (5x5x7)/Cube 0:** Measurement grid: dx=8mm, dy=8mm, dz=5mm

Reference Value = 5.709 V/m; Power Drift = -0.03 dB

Peak SAR (extrapolated) = 0.421 W/kg

**SAR(1 g) = 0.264 W/kg; SAR(10 g) = 0.161 W/kg**

Maximum value of SAR (measured) = 0.361 W/kg



0 dB = 0.361 W/kg = -4.42 dBW/kg

Test Laboratory: Huatongwei International Inspection Co., Ltd.,SAR Lab

Date: 9/28/2018

**GSM 1900-Body**

Communication System: UID 0, Generic GPRS(TDMA, GMSK, TN 0-1-2-3) (0); Frequency: 1880 MHz;Duty Cycle: 1:2.00447

Medium parameters used:  $f = 1880$  MHz;  $\sigma = 1.539$  S/m;  $\epsilon_r = 53.741$ ;  $\rho = 1000$  kg/m<sup>3</sup>

Phantom section: Flat Section

Ambient Temperature:22.7°C;Liquid Temperature:22.4°C;

DASY Configuration:

- Probe: EX3DV4 - SN7494; ConvF(8.42, 8.42, 8.42) @ 1880 MHz; Calibrated: 2/26/2018
- Sensor-Surface: 1.4mm (Mechanical Surface Detection)
- Electronics: DAE4 Sn1549; Calibrated: 4/25/2018
- Phantom: ELI V8.0 ; Type: QD OVA 004 AA ; Serial: 2078
- DASY52 52.10.1(1476); SEMCAD X 14.6.11(7439)

**Rear/CH 661/Area Scan (61x121x1):** Interpolated grid: dx=1.500 mm, dy=1.500 mm  
Maximum value of SAR (interpolated) = 0.341 W/kg

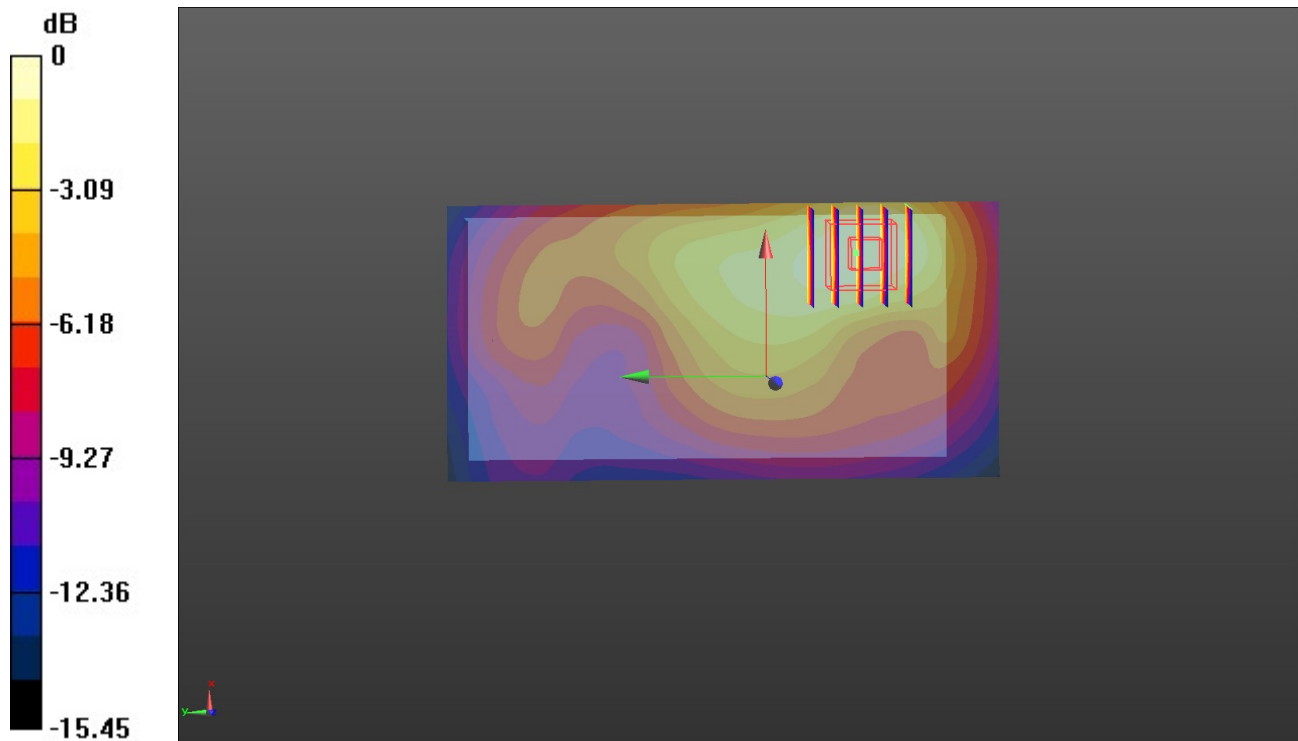
**Rear/CH 661/Zoom Scan (5x5x7)/Cube 0:** Measurement grid: dx=8mm, dy=8mm, dz=5mm

Reference Value = 10.05 V/m; Power Drift = -0.04 dB

Peak SAR (extrapolated) = 0.416 W/kg

**SAR(1 g) = 0.235 W/kg; SAR(10 g) = 0.143 W/kg**

Maximum value of SAR (measured) = 0.337 W/kg



0 dB = 0.337 W/kg = -4.72 dBW/kg

Test Laboratory: Huatongwei International Inspection Co., Ltd.,SAR Lab

Date: 9/27/2018

**WCDMA Band II-Head**

Communication System: UID 0, Generic UMTS (0); Frequency: 1880 MHz;Duty Cycle: 1:1

Medium parameters used:  $f = 1880$  MHz;  $\sigma = 1.455$  S/m;  $\epsilon_r = 41.738$ ;  $\rho = 1000$  kg/m<sup>3</sup>

Phantom section: Left Section

Ambient Temperature:22.7°C;Liquid Temperature:22.3°C;

DASY Configuration:

- Probe: EX3DV4 - SN7494; ConvF(8.83, 8.83, 8.83) @ 1880 MHz; Calibrated: 2/26/2018
- Sensor-Surface: 1.4mm (Mechanical Surface Detection)
- Electronics: DAE4 Sn1549; Calibrated: 4/25/2018
- Phantom: Twin-SAM V8.0 ; Type: QD 000 P41 AA; Serial: 1974
- DASY52 52.10.1(1476); SEMCAD X 14.6.11(7439)

**Left Touch Cheek/CH 9400/Area Scan (61x121x1):** Interpolated grid: dx=1.500 mm, dy=1.500 mm

Maximum value of SAR (interpolated) = 0.875 W/kg

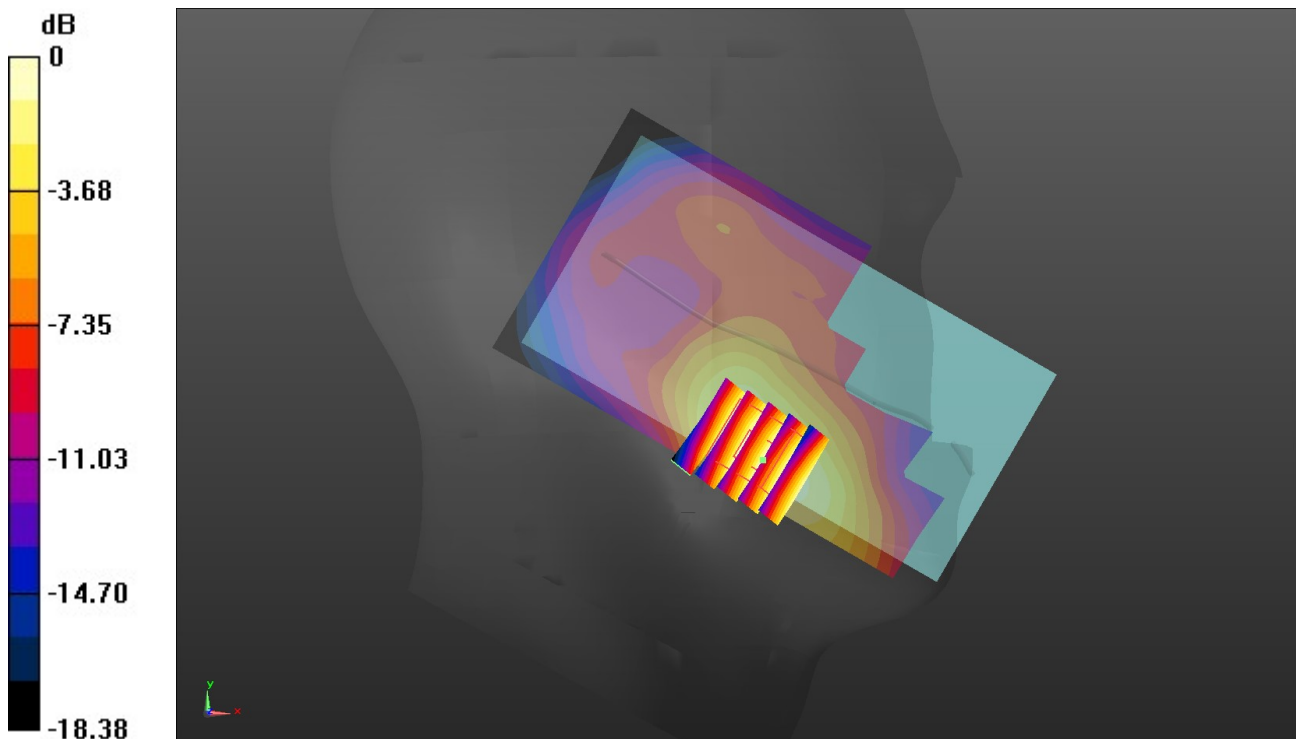
**Left Touch Cheek/CH 9400/Zoom Scan (5x5x7)/Cube 0:** Measurement grid: dx=8mm, dy=8mm, dz=5mm

Reference Value = 8.759 V/m; Power Drift = 0.12 dB

Peak SAR (extrapolated) = 0.993 W/kg

**SAR(1 g) = 0.625 W/kg; SAR(10 g) = 0.385 W/kg**

Maximum value of SAR (measured) = 0.866 W/kg



0 dB = 0.866 W/kg = -0.62 dBW/kg

Test Laboratory: Huatongwei International Inspection Co., Ltd.,SAR Lab

Date: 9/28/2018

**WCDMA Band II-Body**

Communication System: UID 0, Generic UMTS (0); Frequency: 1880 MHz;Duty Cycle: 1:1

Medium parameters used:  $f = 1880$  MHz;  $\sigma = 1.539$  S/m;  $\epsilon_r = 53.741$ ;  $\rho = 1000$  kg/m<sup>3</sup>

Phantom section: Flat Section

Ambient Temperature:22.8°C;Liquid Temperature:22.4°C;

DASY Configuration:

- Probe: EX3DV4 - SN7494; ConvF(8.42, 8.42, 8.42) @ 1880 MHz; Calibrated: 2/26/2018
- Sensor-Surface: 1.4mm (Mechanical Surface Detection)
- Electronics: DAE4 Sn1549; Calibrated: 4/25/2018
- Phantom: ELI V8.0 ; Type: QD OVA 004 AA ; Serial: 2078
- DASY52 52.10.1(1476); SEMCAD X 14.6.11(7439)

**Rear/CH 9400/Area Scan (61x121x1):** Interpolated grid: dx=1.500 mm, dy=1.500 mm

Maximum value of SAR (interpolated) = 0.713 W/kg

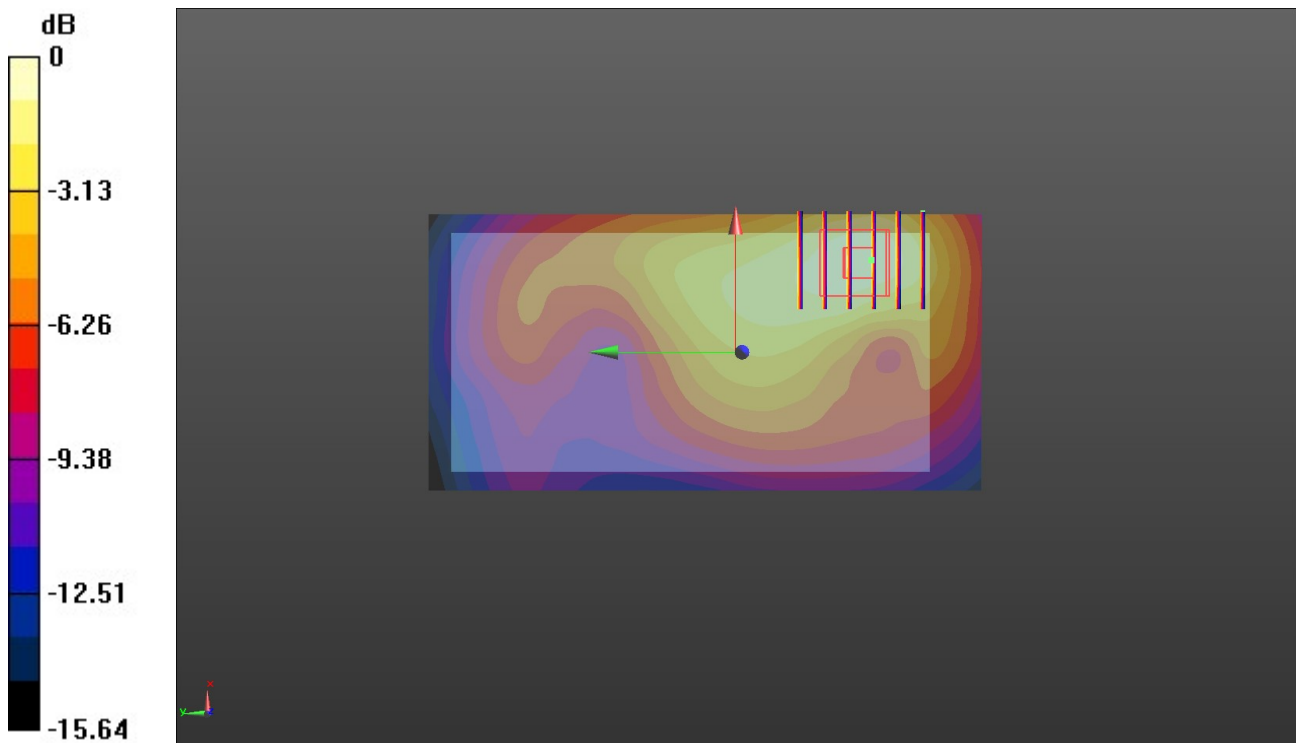
**Rear/CH 9400/Zoom Scan (5x6x7)/Cube 0:** Measurement grid: dx=8mm, dy=8mm, dz=5mm

Reference Value = 14.26 V/m; Power Drift = -0.14 dB

Peak SAR (extrapolated) = 0.895 W/kg

**SAR(1 g) = 0.507 W/kg; SAR(10 g) = 0.305 W/kg**

Maximum value of SAR (measured) = 0.735 W/kg



0 dB = 0.735 W/kg = -1.34 dBW/kg

Test Laboratory: Huatongwei International Inspection Co., Ltd.,SAR Lab

Date: 9/29/2018

**WCDMA Band IV-Head**

Communication System: UID 0, Generic UMTS (0); Frequency: 1732.6 MHz;Duty Cycle: 1:1

Medium parameters used (interpolated):  $f = 1732.6$  MHz;  $\sigma = 1.364$  S/m;  $\epsilon_r = 41.972$ ;  $\rho = 1000$  kg/m<sup>3</sup>

Phantom section: Left Section

Ambient Temperature:22.7°C;Liquid Temperature:22.4°C;

DASY Configuration:

- Probe: EX3DV4 - SN7494; ConvF(9.23, 9.23, 9.23) @ 1732.6 MHz; Calibrated: 2/26/2018
- Sensor-Surface: 1.4mm (Mechanical Surface Detection)
- Electronics: DAE4 Sn1549; Calibrated: 4/25/2018
- Phantom: Twin-SAM V8.0 ; Type: QD 000 P41 AA; Serial: 1974
- DASY52 52.10.1(1476); SEMCAD X 14.6.11(7439)

**Left Touch Cheek/CH 1413/Area Scan (61x121x1):** Interpolated grid: dx=1.500 mm, dy=1.500 mm

Maximum value of SAR (interpolated) = 1.17 W/kg

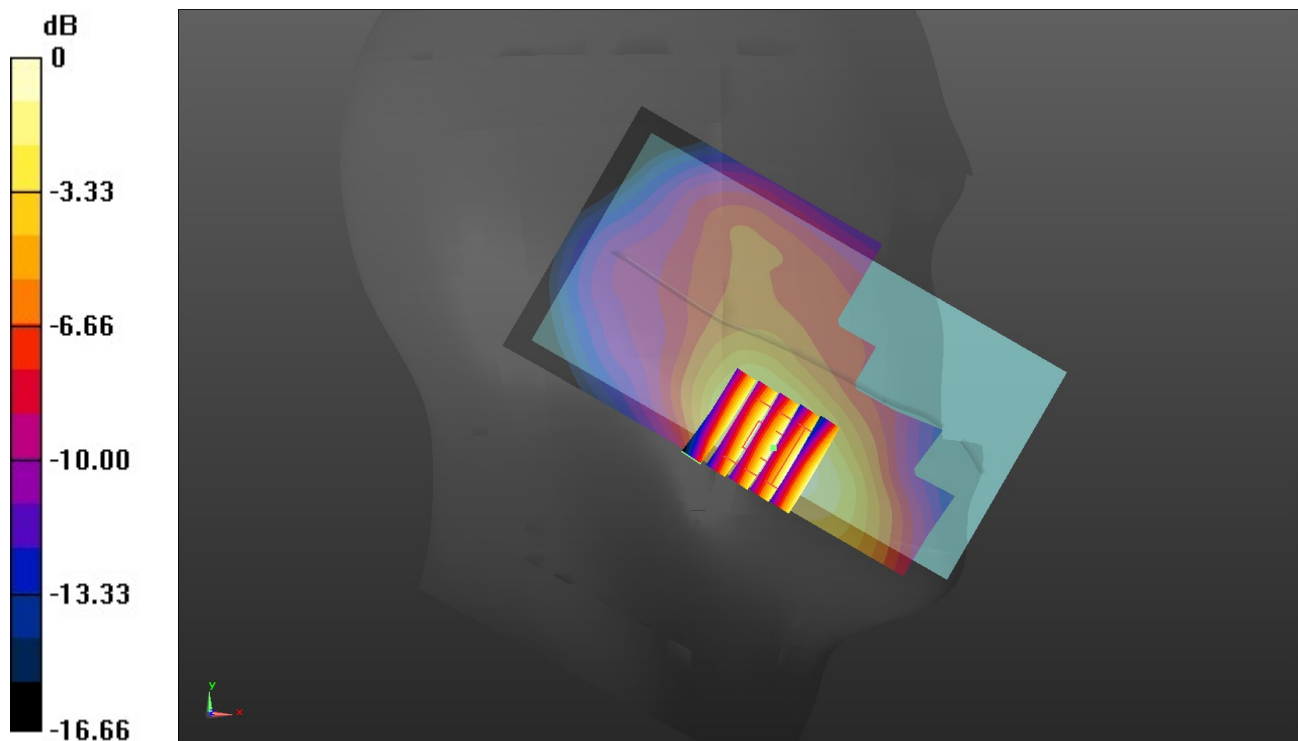
**Left Touch Cheek/CH 1413/Zoom Scan (5x5x7)/Cube 0:** Measurement grid: dx=8mm, dy=8mm, dz=5mm

Reference Value = 8.969 V/m; Power Drift = -0.03 dB

Peak SAR (extrapolated) = 1.28 W/kg

**SAR(1 g) = 0.789 W/kg; SAR(10 g) = 0.523 W/kg**

Maximum value of SAR (measured) = 1.11 W/kg



0 dB = 1.11 W/kg = 0.45 dBW/kg

Test Laboratory: Huatongwei International Inspection Co., Ltd.,SAR Lab

Date: 9/30/2018

**WCDMA Band IV-Body**

Communication System: UID 0, Generic UMTS (0); Frequency: 1732.6 MHz;Duty Cycle: 1:1

Medium parameters used (interpolated):  $f = 1732.6$  MHz;  $\sigma = 1.43$  S/m;  $\epsilon_r = 53.891$ ;  $\rho = 1000$  kg/m<sup>3</sup>

Phantom section: Flat Section

Ambient Temperature:22.7°C;Liquid Temperature:22.4°C;

DASY Configuration:

- Probe: EX3DV4 - SN7494; ConvF(8.77, 8.77, 8.77) @ 1732.6 MHz; Calibrated: 2/26/2018
- Sensor-Surface: 1.4mm (Mechanical Surface Detection)
- Electronics: DAE4 Sn1549; Calibrated: 4/25/2018
- Phantom: ELI V8.0 ; Type: QD OVA 004 AA ; Serial: 2078
- DASY52 52.10.1(1476); SEMCAD X 14.6.11(7439)

**Rear/CH 1413/Area Scan (61x121x1):** Interpolated grid: dx=1.500 mm, dy=1.500 mm

Maximum value of SAR (interpolated) = 0.724 W/kg

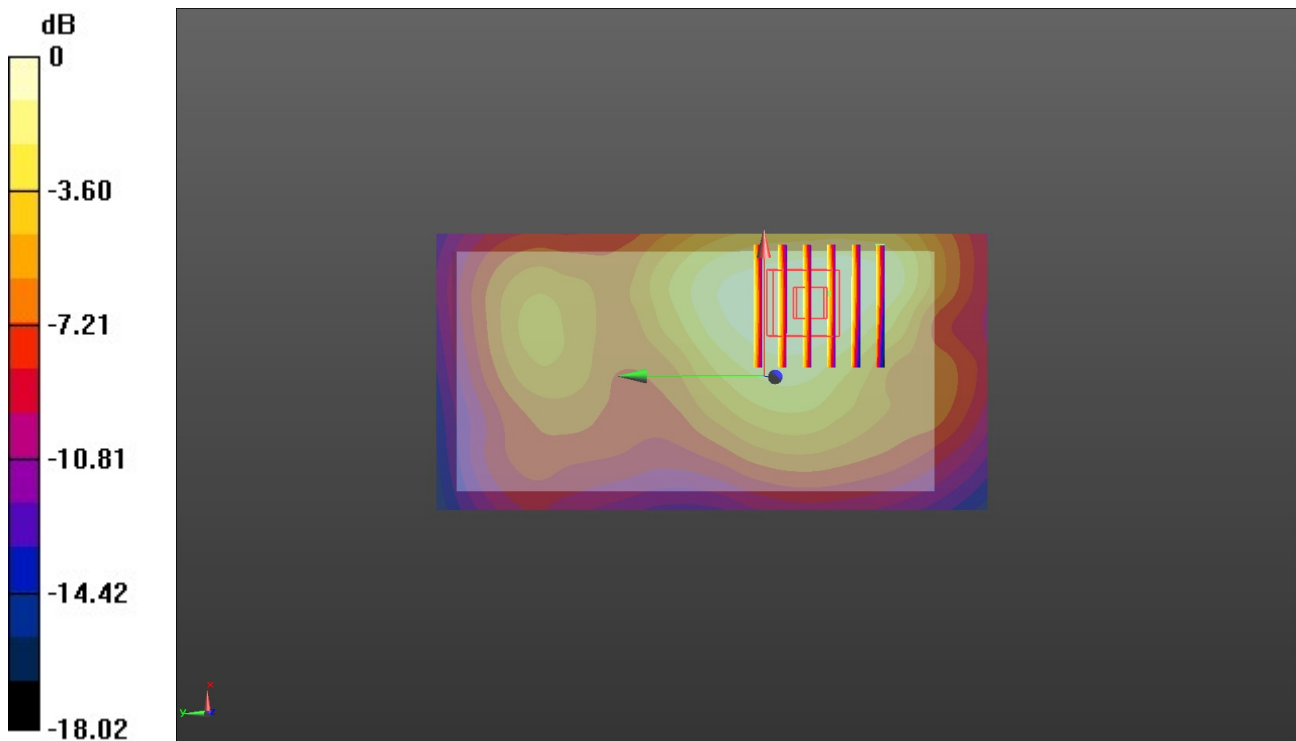
**Rear/CH 1413/Zoom Scan (6x6x7)/Cube 0:** Measurement grid: dx=8mm, dy=8mm, dz=5mm

Reference Value = 15.00 V/m; Power Drift = -0.09 dB

Peak SAR (extrapolated) = 0.866 W/kg

**SAR(1 g) = 0.511 W/kg; SAR(10 g) = 0.332 W/kg**

Maximum value of SAR (measured) = 0.718 W/kg



0 dB = 0.718 W/kg = -1.44 dBW/kg



Test Laboratory: Huatongwei International Inspection Co., Ltd.,SAR Lab

Date: 9/25/2018

**WCDMA Band V-Head**

Communication System: UID 0, Generic UMTS (0); Frequency: 836.6 MHz;Duty Cycle: 1:1

Medium parameters used (interpolated):  $f = 836.6$  MHz;  $\sigma = 0.933$  S/m;  $\epsilon_r = 42.599$ ;  $\rho = 1000$  kg/m<sup>3</sup>

Phantom section: Left Section

Ambient Temperature:22.6°C;Liquid Temperature:22.3°C;

DASY Configuration:

- Probe: EX3DV4 - SN7494; ConvF(10.73, 10.73, 10.73) @ 836.6 MHz; Calibrated: 2/26/2018
- Sensor-Surface: 1.4mm (Mechanical Surface Detection)
- Electronics: DAE4 Sn1549; Calibrated: 4/25/2018
- Phantom: Twin-SAM V8.0 ; Type: QD 000 P41 AA; Serial: 1974
- DASY52 52.10.1(1476); SEMCAD X 14.6.11(7439)

**Left Touch Cheek/CH 4183/Area Scan (61x121x1):** Interpolated grid: dx=1.500 mm, dy=1.500 mm

Maximum value of SAR (interpolated) = 0.666 W/kg

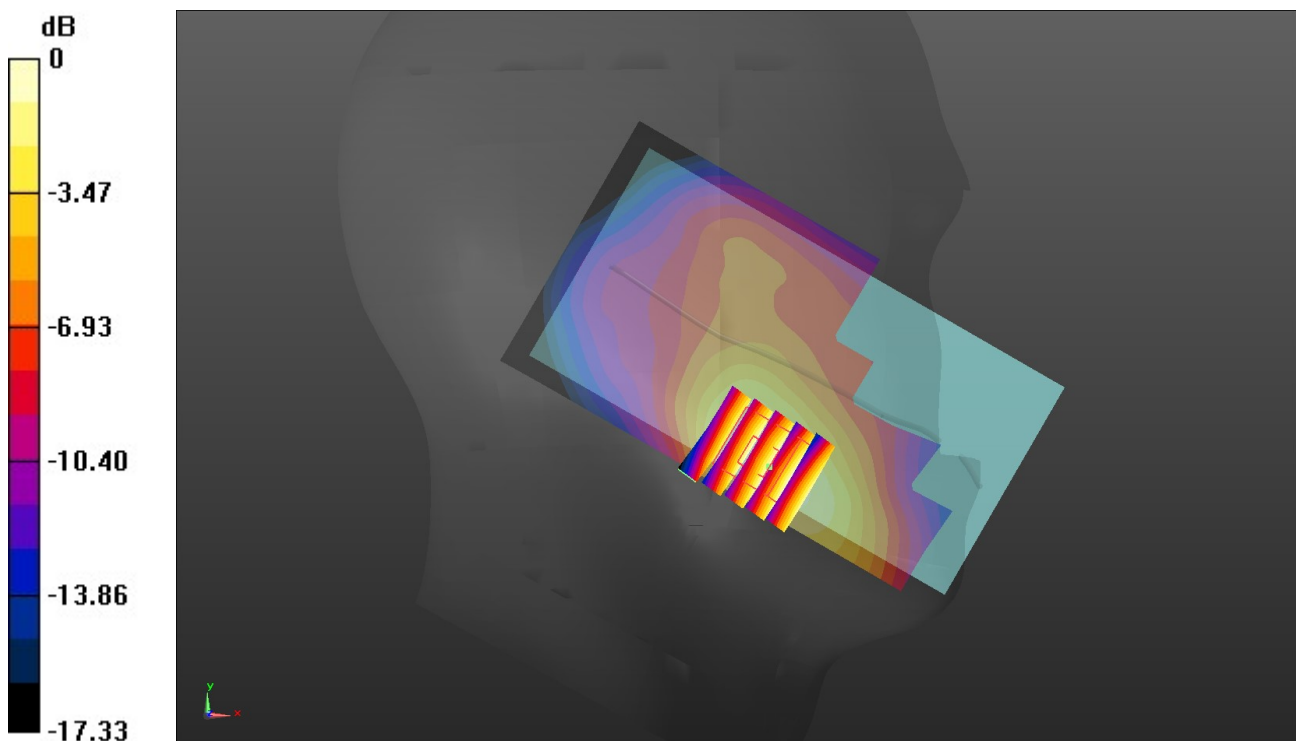
**Left Touch Cheek/CH 4183/Zoom Scan (5x5x7)/Cube 0:** Measurement grid: dx=8mm, dy=8mm, dz=5mm

Reference Value = 7.861 V/m; Power Drift = 0.13 dB

Peak SAR (extrapolated) = 0.759 W/kg

**SAR(1 g) = 0.494 W/kg; SAR(10 g) = 0.311 W/kg**

Maximum value of SAR (measured) = 0.662 W/kg



0 dB = 0.662 W/kg = -1.79 dBW/kg

Test Laboratory: Huatongwei International Inspection Co., Ltd.,SAR Lab

Date: 9/26/2018

**WCDMA Band V-Body**

Communication System: UID 0, Generic UMTS (0); Frequency: 836.6 MHz;Duty Cycle: 1:1

Medium parameters used (interpolated):  $f = 836.6$  MHz;  $\sigma = 0.967$  S/m;  $\epsilon_r = 55.399$ ;  $\rho = 1000$  kg/m<sup>3</sup>

Phantom section: Flat Section

Ambient Temperature:22.7°C;Liquid Temperature:22.4°C;

DASY Configuration:

- Probe: EX3DV4 - SN7494; ConvF(10.5, 10.5, 10.5) @ 836.6 MHz; Calibrated: 2/26/2018
- Sensor-Surface: 1.4mm (Mechanical Surface Detection)
- Electronics: DAE4 Sn1549; Calibrated: 4/25/2018
- Phantom: ELI V8.0 ; Type: QD OVA 004 AA ; Serial: 2078
- DASY52 52.10.1(1476); SEMCAD X 14.6.11(7439)

**Rear/CH 4183/Area Scan (61x121x1):** Interpolated grid: dx=1.500 mm, dy=1.500 mm

Maximum value of SAR (interpolated) = 0.437 W/kg

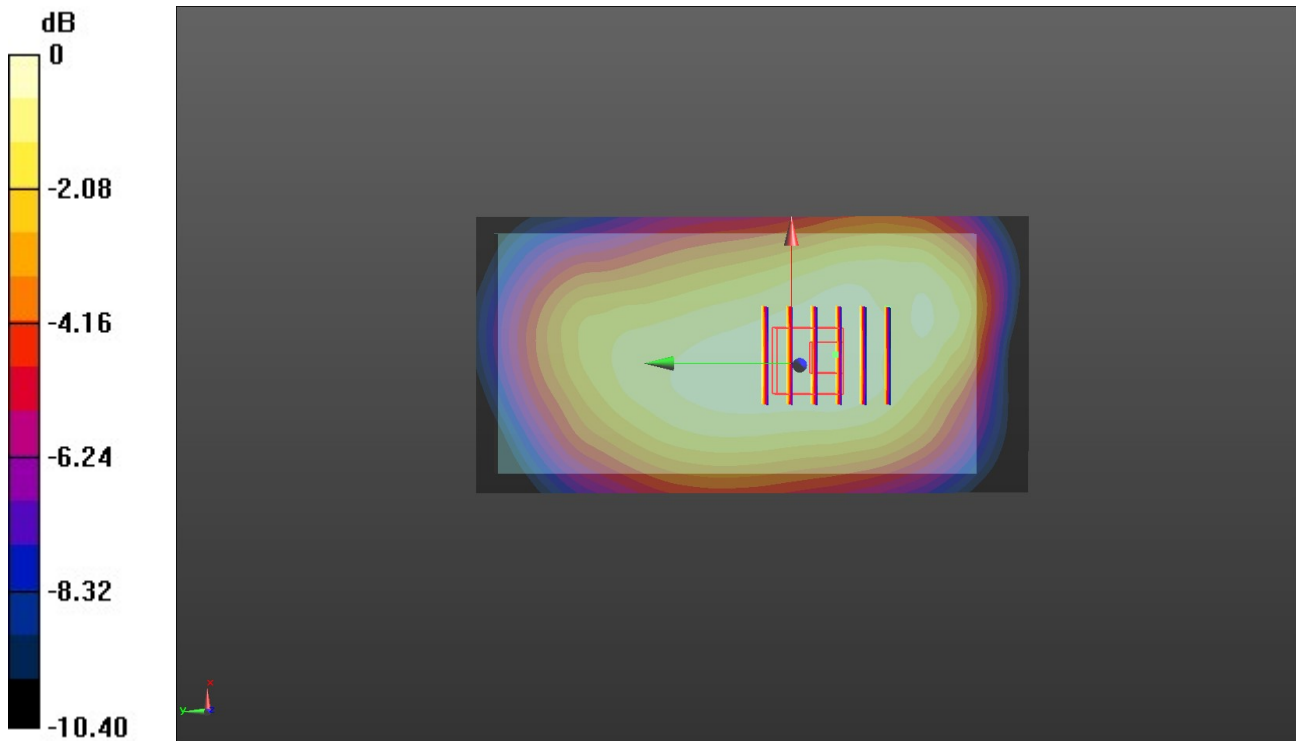
**Rear/CH 4183/Zoom Scan (5x6x7)/Cube 0:** Measurement grid: dx=8mm, dy=8mm, dz=5mm

Reference Value = 20.87 V/m; Power Drift = 0.05 dB

Peak SAR (extrapolated) = 0.503 W/kg

**SAR(1 g) = 0.322 W/kg; SAR(10 g) = 0.237 W/kg**

Maximum value of SAR (measured) = 0.424 W/kg



0 dB = 0.424 W/kg = -3.73 dBW/kg

Test Laboratory: Huatongwei International Inspection Co., Ltd.,SAR Lab

Date: 9/27/2018

**LTE Band 2-Head**

Communication System: UID 0, Generic LTE-FDD (0); Frequency: 1880 MHz;Duty Cycle: 1:1

Medium parameters used:  $f = 1880$  MHz;  $\sigma = 1.455$  S/m;  $\epsilon_r = 41.738$ ;  $\rho = 1000$  kg/m<sup>3</sup>

Phantom section: Left Section

Ambient Temperature:22.8°C;Liquid Temperature:22.4°C;

DASY Configuration:

- Probe: EX3DV4 - SN7494; ConvF(8.83, 8.83, 8.83) @ 1880 MHz; Calibrated: 2/26/2018
- Sensor-Surface: 1.4mm (Mechanical Surface Detection)
- Electronics: DAE4 Sn1549; Calibrated: 4/25/2018
- Phantom: Twin-SAM V8.0 ; Type: QD 000 P41 AA; Serial: 1974
- DASY52 52.10.1(1476); SEMCAD X 14.6.11(7439)

**Left Touch Cheek/CH 18900/Area Scan (61x121x1):** Interpolated grid: dx=1.500 mm, dy=1.500 mm

Maximum value of SAR (interpolated) = 0.766 W/kg

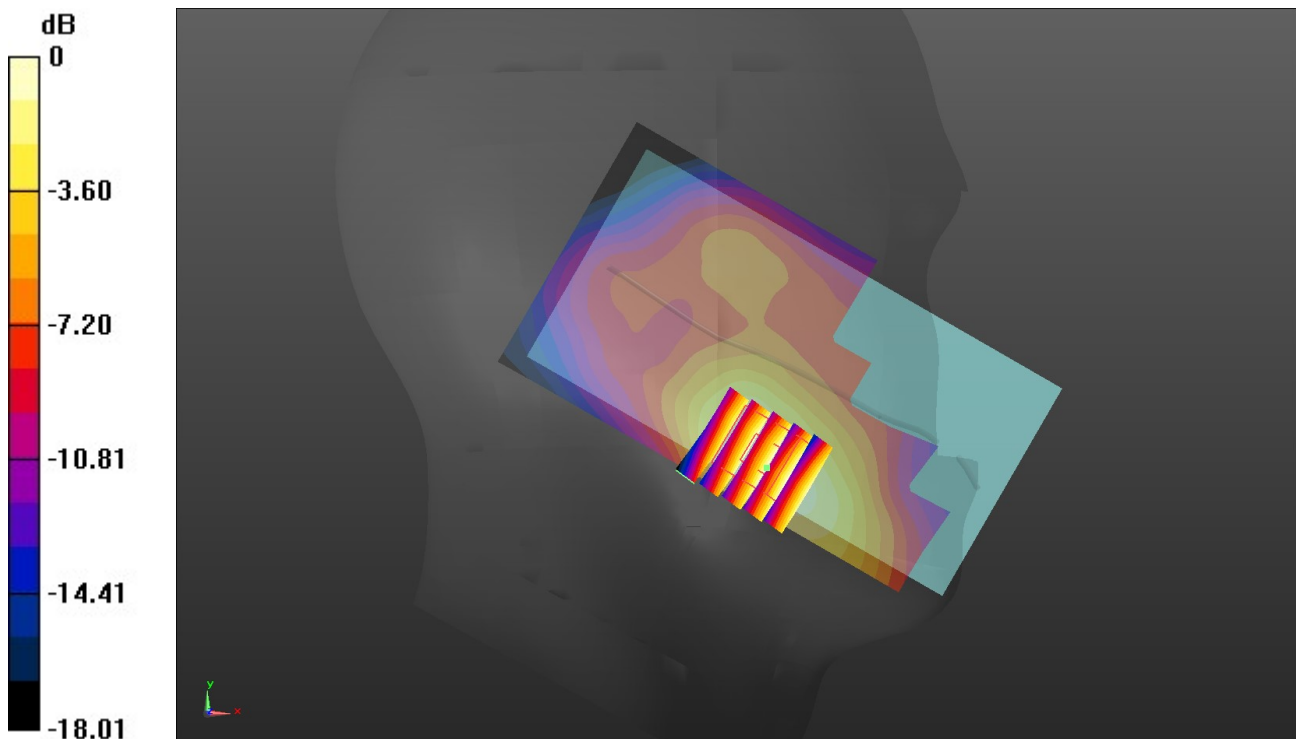
**Left Touch Cheek/CH 18900/Zoom Scan (5x5x7)/Cube 0:** Measurement grid: dx=8mm, dy=8mm, dz=5mm

Reference Value = 8.484 V/m; Power Drift = -0.07 dB

Peak SAR (extrapolated) = 0.812 W/kg

**SAR(1 g) = 0.520 W/kg; SAR(10 g) = 0.324 W/kg**

Maximum value of SAR (measured) = 0.705 W/kg



0 dB = 0.705 W/kg = -1.52 dBW/kg

Test Laboratory: Huatongwei International Inspection Co., Ltd.,SAR Lab

Date: 9/28/2018

**LTE Band 2-Body**

Communication System: UID 0, Generic LTE-FDD (0); Frequency: 1880 MHz;Duty Cycle: 1:1

Medium parameters used:  $f = 1880$  MHz;  $\sigma = 1.539$  S/m;  $\epsilon_r = 53.741$ ;  $\rho = 1000$  kg/m<sup>3</sup>

Phantom section: Flat Section

Ambient Temperature:22.7°C;Liquid Temperature:22.4°C;

DASY Configuration:

- Probe: EX3DV4 - SN7494; ConvF(8.42, 8.42, 8.42) @ 1880 MHz; Calibrated: 2/26/2018
- Sensor-Surface: 1.4mm (Mechanical Surface Detection)
- Electronics: DAE4 Sn1549; Calibrated: 4/25/2018
- Phantom: ELI V8.0 ; Type: QD OVA 004 AA ; Serial: 2078
- DASY52 52.10.1(1476); SEMCAD X 14.6.11(7439)

**Rear/CH 18900/Area Scan (61x121x1):** Interpolated grid: dx=1.500 mm, dy=1.500 mm  
Maximum value of SAR (interpolated) = 0.759 W/kg

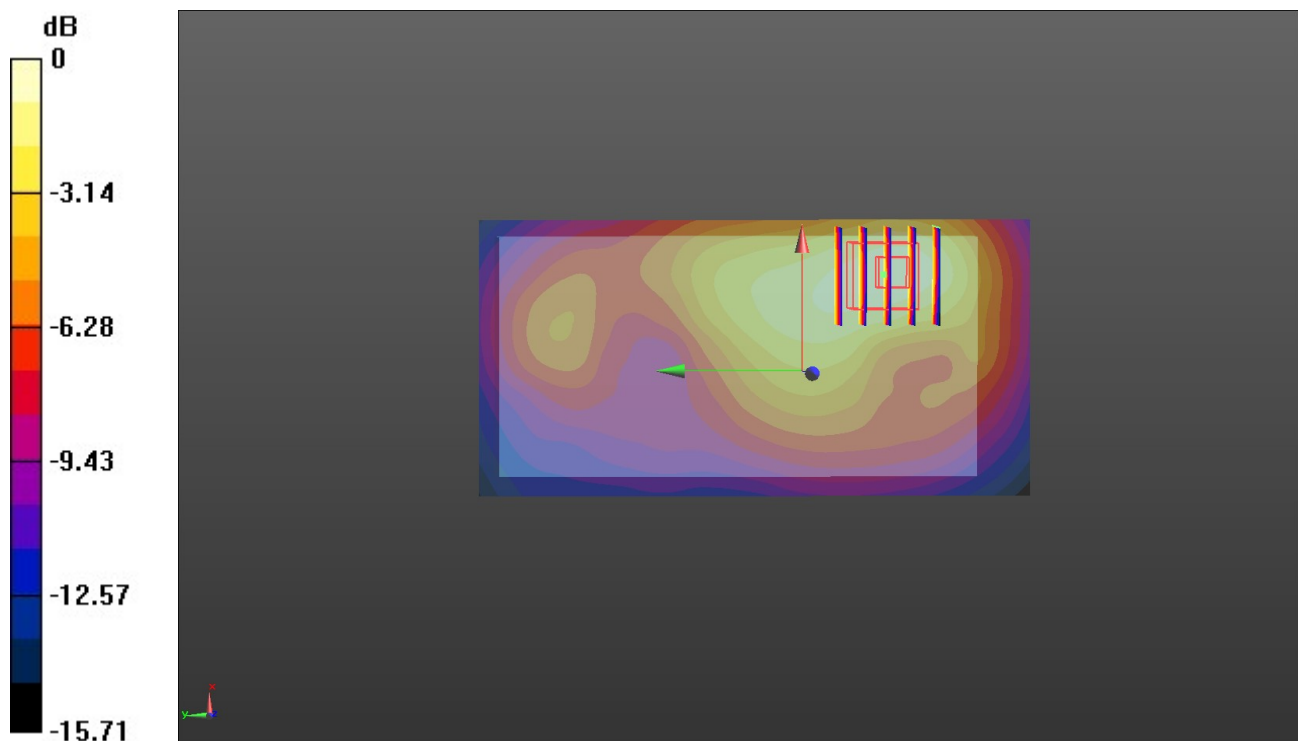
**Rear/CH 18900/Zoom Scan (5x5x7)/Cube 0:** Measurement grid: dx=8mm, dy=8mm, dz=5mm

Reference Value = 14.55 V/m; Power Drift = 0.09 dB

Peak SAR (extrapolated) = 0.947 W/kg

**SAR(1 g) = 0.536 W/kg; SAR(10 g) = 0.323 W/kg**

Maximum value of SAR (measured) = 0.780 W/kg



0 dB = 0.780 W/kg = -1.08 dBW/kg