

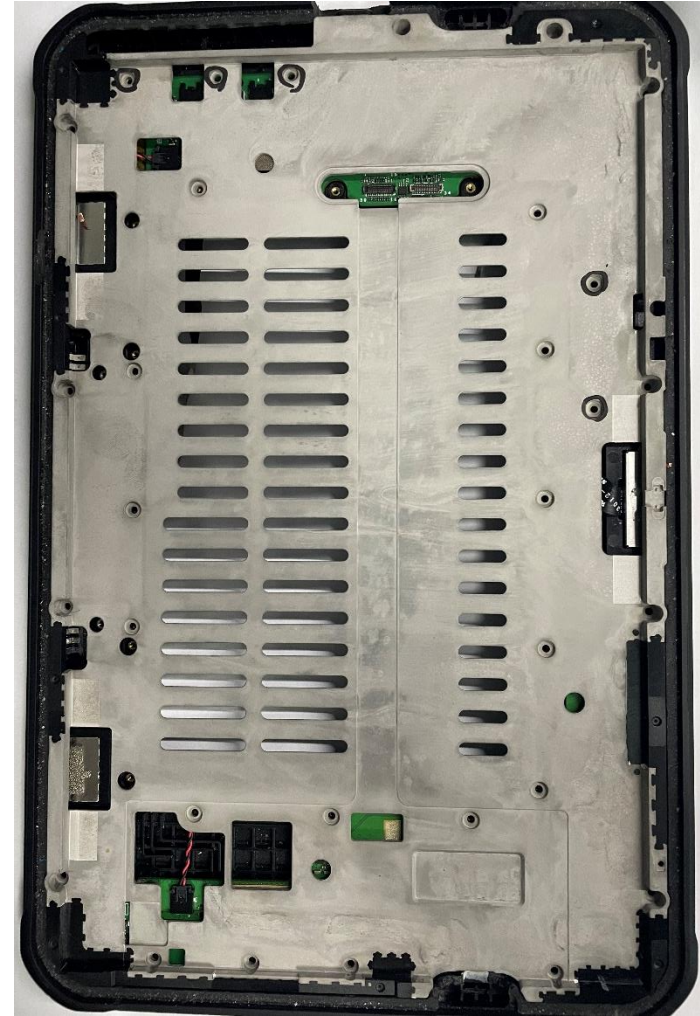
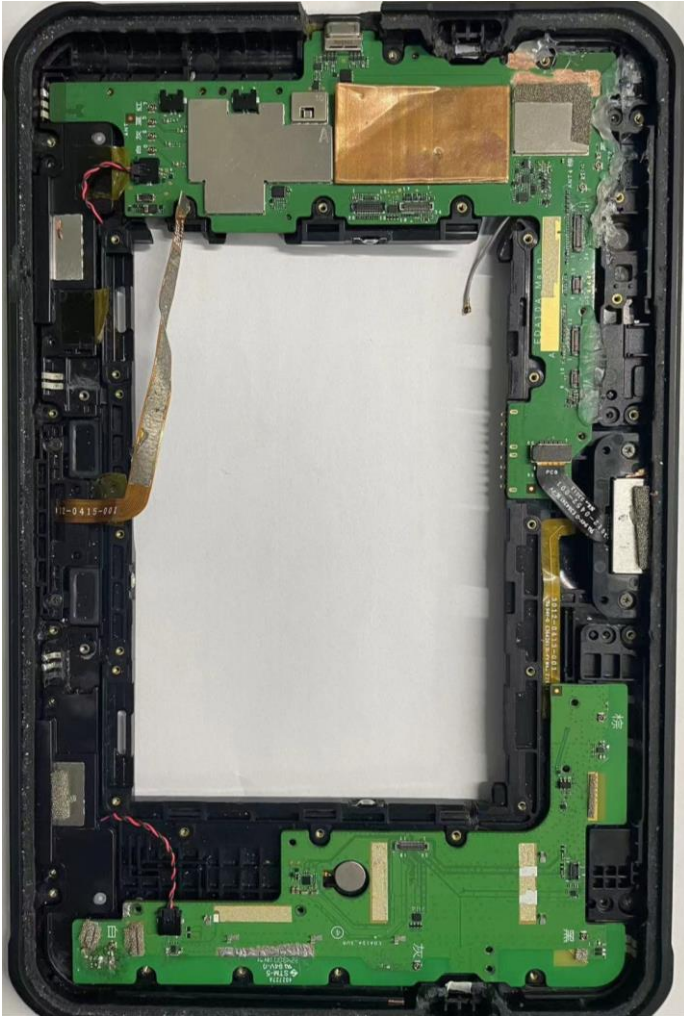
# EDA10A\_WLAN天线规格书

Author: Hans  
Data: 2023/03/04  
Check: Kevin Cheung  
Data: 2023/03/04

## ➤ History

VersionV	Item	Author	Date	Remark
V1.0	Mockup模拟调试	Hans	2022/11/30	无源
V2.0	整机CNC调试	Hans	2022/12/20	无源
V2.1	整机CNC优化调试	Hans	2023/01/02	无源
V2.2	NFC天线整机CNC调试	Hans/Kevin	2023/01/02	无源
V2.3	TRP/NFC fully function test	Hans	2023/01/05	有源
V2.4	TRP/TIS fully function test	Hans	2023/01/13	有源
V2.5	ANT0合金实验报告	Hans	2023/02/03	无源/有源
V2.6	ANT3/NFC调试报告	Hans	2023/02/03	无源/有源
V2.7	ANT0/6无源优化	Hans	2023/02/06	无源
V2.8	ANT 5/7无源优化	Hans	2023/02/10	无源
V2.9	PCBA改版/整机环境处理资料	Hans	2023/02/18	
V2.10	超低损线与普通线对天线性能影响	Rentz	2023/02/24	无源
V2.11	天线规格书	Hans	2023/03/03	

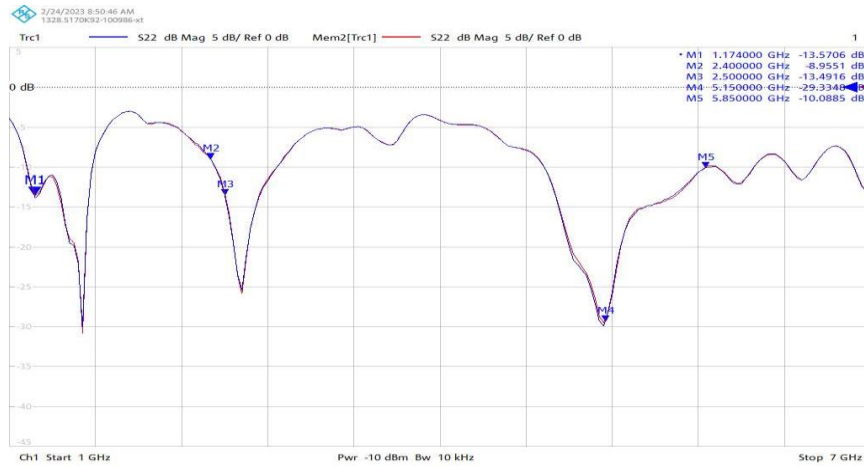
➤ 1. DUT pictures



➤ 2. S11—Ant2-Ant3

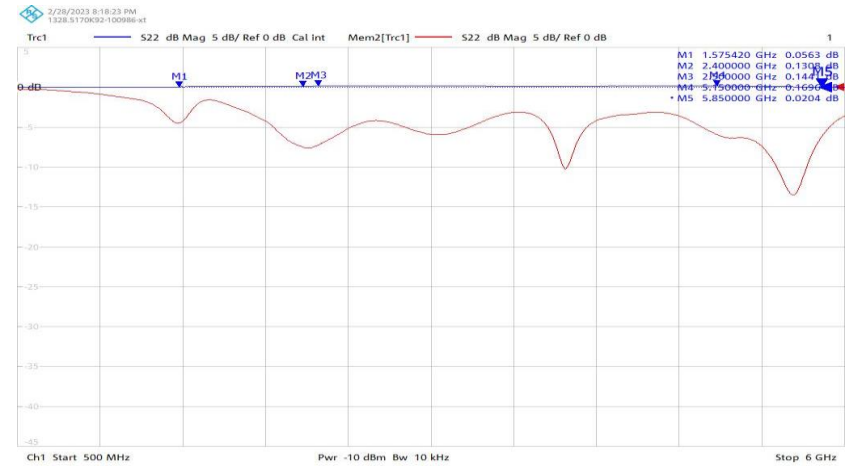
ANT2-

1176.42MHz/2400~2500MHz/5150~5850MHz



ANT3-

1575.42MHz/2400~2500MHz/5150~5850MHz



➤ **3.1 Passive Efficiency Graph Ant0-Ant3**

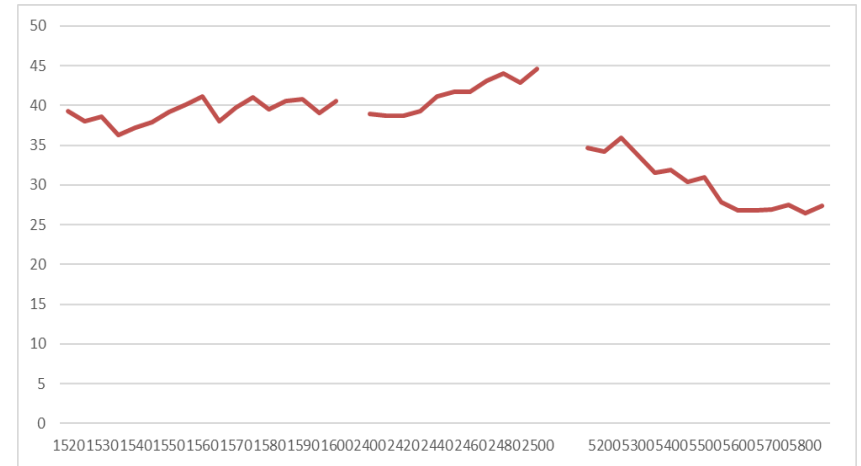
**ANT2-**

1176.42MHz/2400~2500MHz/5150~5850MHz



**ANT3-**

1575.42MHz/2400~2500MHz/5150~5850MHz



➤ 4.1 Raw Data—Ant2-Ant3

ANT2			
频率 (MHz)	效率 (%)	效率 (dBi)	增益 (dBi)
1145	19.6	-7.1	-1.9
1150	22.0	-6.6	-1.3
1155	23.2	-6.3	-1.0
1160	23.4	-6.3	-0.9
1165	23.5	-6.3	-0.8
1170	25.2	-6.0	-0.3
1175	24.3	-6.1	-0.5
1180	26.6	-5.8	-0.2
1185	26.5	-5.8	-0.2
1190	26.9	-5.7	-0.2
1195	25.6	-5.9	-0.5
1200	26.6	-5.8	-0.3
2400	37.5	-4.3	0.8
2410	39.4	-4.0	1.0
2420	40.6	-3.9	1.2
2430	40.9	-3.9	1.2
2440	41.1	-3.9	1.4
2450	41.5	-3.8	1.5
2460	42.1	-3.8	1.6
2470	42.8	-3.7	1.7
2480	43.3	-3.6	1.8
2490	43.8	-3.6	1.8
2500	44.5	-3.5	1.8
5150	27.0	-5.7	2.0
5200	25.6	-5.9	2.2
5250	25.8	-5.9	2.2
5300	23.8	-6.2	1.6
5350	24.8	-6.1	1.6
5400	24.9	-6.0	1.7
5450	25.9	-5.9	1.9
5500	28.4	-5.5	2.3
5550	27.7	-5.6	2.1
5600	26.5	-5.8	1.7
5650	24.6	-6.1	1.2
5700	21.4	-6.7	1.0
5750	21.2	-6.7	1.6
5800	21.3	-6.7	2.0
5850	23.1	-6.4	2.5

ANT3			
频率 (MHz)	效率 (%)	效率 (dBi)	增益 (dBi)
1520	39.3	-4.1	1.1
1525	38.0	-4.2	0.9
1530	38.6	-4.1	0.9
1535	36.3	-4.4	0.7
1540	37.2	-4.3	0.6
1545	37.9	-4.2	0.6
1550	39.2	-4.1	0.7
1555	40.1	-4.0	0.7
1560	41.1	-3.9	0.7
1565	38.0	-4.2	0.5
1570	39.8	-4.0	0.5
1575	41.0	-3.9	0.5
1580	39.5	-4.0	0.2
1585	40.6	-3.9	0.0
1590	40.8	-3.9	0.0
1595	39.1	-4.1	-0.4
1600	40.6	-3.9	-0.6
2400	39.0	-4.1	4.8
2410	38.7	-4.1	4.8
2420	38.8	-4.1	4.6
2430	39.4	-4.1	4.6
2440	41.1	-3.9	4.6
2450	41.7	-3.8	4.5
2460	41.7	-3.8	4.5
2470	43.1	-3.7	4.5
2480	44.0	-3.6	4.5
2490	42.9	-3.7	4.4
2500	44.6	-3.5	4.5
5150	34.6	-4.6	-1.8
5200	34.2	-4.7	-1.2
5250	36.0	-4.4	0.1
5300	33.7	-4.7	-0.1
5350	31.5	-5.0	-0.1
5400	31.9	-5.0	0.9
5450	30.4	-5.2	1.4
5500	31.0	-5.1	2.0
5550	27.9	-5.6	2.3
5600	26.8	-5.7	2.6
5650	26.8	-5.7	3.0
5700	26.9	-5.7	3.1
5750	27.5	-5.6	2.7
5800	26.5	-5.8	2.3
5850	27.4	-5.6	2.7

THANKS!