

01_WLAN2.4GHz_802.11b 1Mbps_Left Cheek_0mm_Ch1

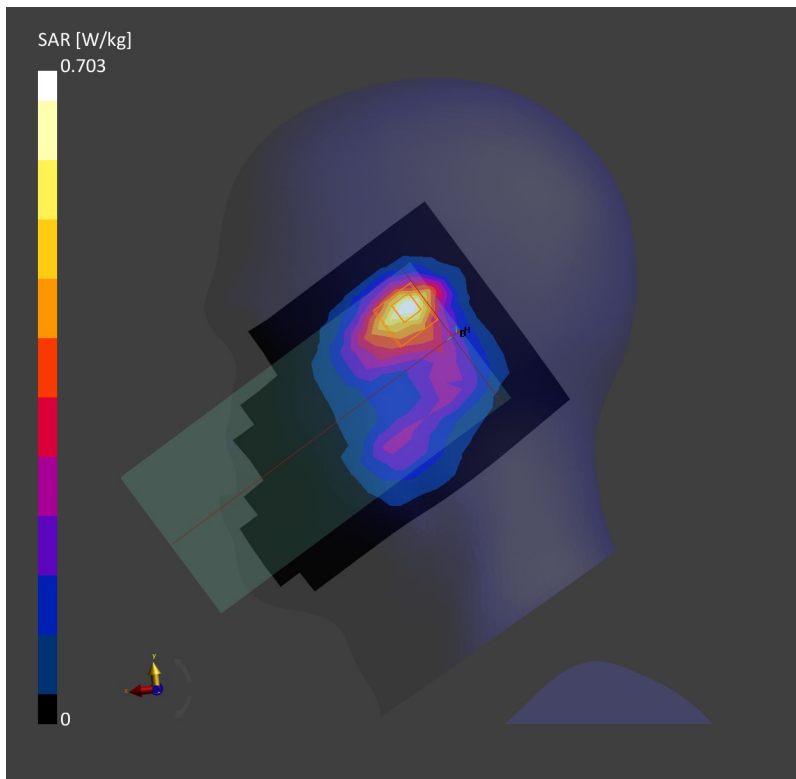
Communication System: WLAN 2.4GHz; Frequency: 2412.0
Medium: HSL. Medium parameters used: $f= 2412.0$ MHz; $\sigma= 1.72$ S/m; $\epsilon_r = 39.4$
Ambient Temperature: 23.3°C; Liquid Temperature: 22.7°C

DASY6 Configuration:

- Probe: EX3DV4 - SN7764; ConvF(8.25, 8.25, 8.25); Calibrated: 2022-09-30
- Sensor-Surface: 1.4 mm
- Electronics: DAE4 Sn1279; Calibrated: 2022-10-26
- Phantom: Twin-SAM V8.0 (30deg probe tilt); Serial: 2074
- Measurement Software: cDASY6 V6.6.0.13926

Area Scan (120.0 mm x 216.0 mm): Measurement Grid: 12.0 mm x 12.0 mm
SAR (1g) = 0.660 W/kg; SAR (10g) = 0.328 W/kg;

Zoom Scan (30.0 mm x 30.0 mm x 30.0 mm): Measurement Grid: 5.0 mm x 5.0 mm x 5.0 mm
Power Drift = -0.09 dB
SAR (1g) = 0.703 W/kg; SAR (10g) = 0.334 W/kg;



02_Bluetooth_1Mbps_Left Cheek_0mm_Ch39

Communication System: ISM 2.4 GHz Band; Frequency: 2441.0

Medium: HSL. Medium parameters used: $f= 2441.0$ MHz; $\sigma= 1.73$ S/m; $\epsilon_r = 39.3$

Ambient Temperature: 23.3°C; Liquid Temperature: 22.7°C

DASY6 Configuration:

- Probe: EX3DV4 - SN7764; ConvF(8.25, 8.25, 8.25); Calibrated: 2022-09-30
- Sensor-Surface: 1.4 mm
- Electronics: DAE4 Sn1279; Calibrated: 2022-10-26
- Phantom: Twin-SAM V8.0 (30deg probe tilt); Serial: 2074
- Measurement Software: cDASY6 V6.6.0.13926

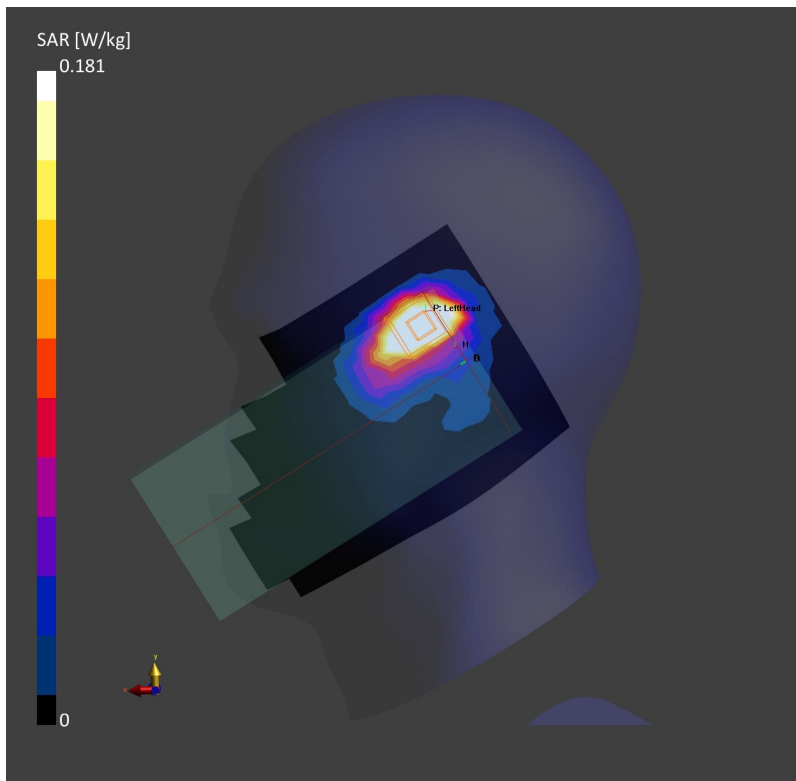
Area Scan (120.0 mm x 216.0 mm): Measurement Grid: 12.0 mm x 12.0 mm

SAR (1g) = 0.178 W/kg; SAR (10g) = 0.086 W/kg;

Zoom Scan (30.0 mm x 30.0 mm x 30.0 mm): Measurement Grid: 5.0 mm x 5.0 mm x 5.0 mm

Power Drift = -0.01 dB

SAR (1g) = 0.181 W/kg; SAR (10g) = 0.092 W/kg;



03_WLAN5GHz_802.11a 6Mbps_Left Cheek_0mm_Ch64

Communication System: WLAN 5GHz; Frequency: 5320.0

Medium: HSL. Medium parameters used: $f= 5320.0$ MHz; $\sigma= 4.66$ S/m; $\epsilon_r = 35.6$

Ambient Temperature: 23.2°C; Liquid Temperature: 22.9°C

DASY6 Configuration:

- Probe: EX3DV4 - SN7764; ConvF(5.65, 5.65, 5.65); Calibrated: 2022-09-30
- Sensor-Surface: 1.4 mm
- Electronics: DAE4 Sn1279; Calibrated: 2022-10-26
- Phantom: Twin-SAM V8.0 (30deg probe tilt); Serial: 2074
- Measurement Software: cDASY6 V6.6.0.13926

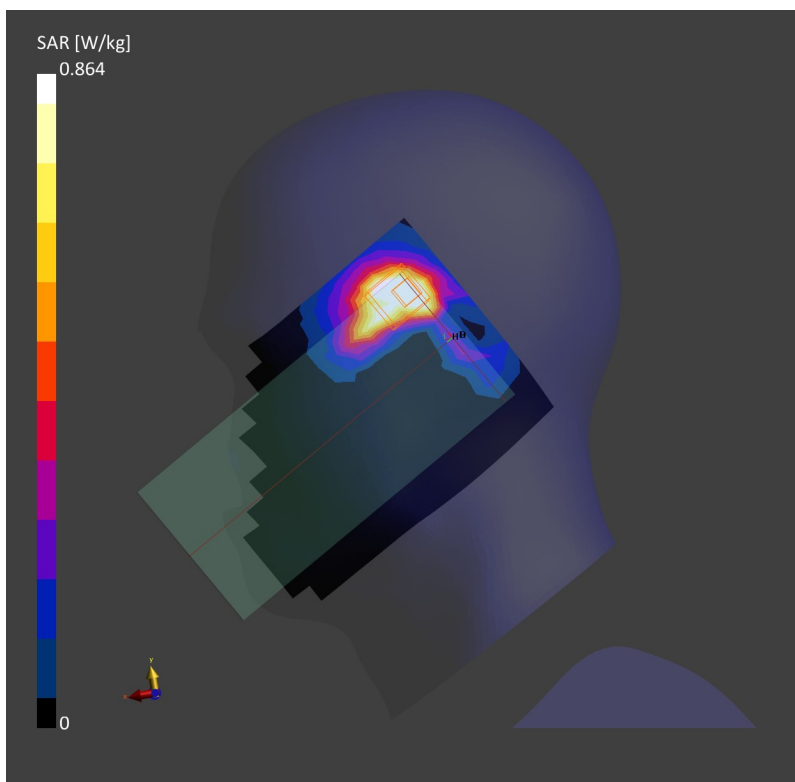
Area Scan (120.0 mm x 200.0 mm): Measurement Grid: 10.0 mm x 10.0 mm

SAR (1g) = 0.822 W/kg; SAR (10g) = 0.334 W/kg;

Zoom Scan (24.0 mm x 24.0 mm x 22.0 mm): Measurement Grid: 4.0 mm x 4.0 mm x 1.4 mm

Power Drift = -0.11 dB

SAR (1g) = 0.864 W/kg; SAR (10g) = 0.345 W/kg;



04_WLAN5GHz_802.11a 6Mbps_Left Cheek_0mm_Ch124

Communication System: WLAN 5GHz; Frequency: 5620.0

Medium: HSL. Medium parameters used: $f= 5620.0$ MHz; $\sigma= 4.98$ S/m; $\epsilon_r = 35.0$

Ambient Temperature: 23.4°C; Liquid Temperature: 22.8°C

DASY6 Configuration:

- Probe: EX3DV4 - SN7764; ConvF(4.9, 4.9, 4.9); Calibrated: 2022-09-30
- Sensor-Surface: mm
- Electronics: DAE4 Sn1279; Calibrated: 2022-10-26
- Phantom: Twin-SAM V8.0 (30deg probe tilt); Serial: 2074
- Measurement Software: cDASY6 V6.6.0.13926

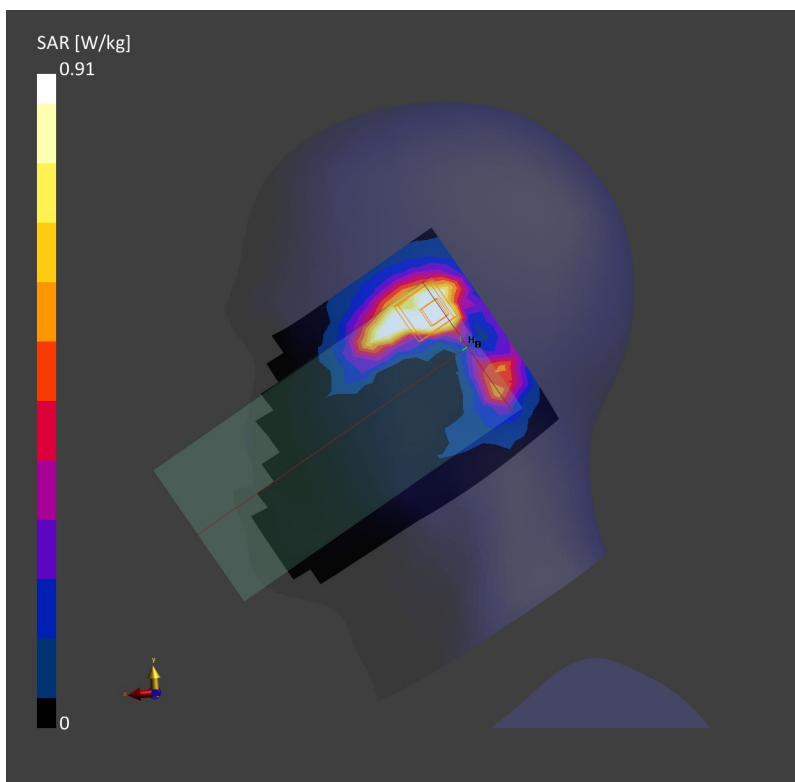
Area Scan (120.0 mm x 200.0 mm): Measurement Grid: 10.0 mm x 10.0 mm

SAR (1g) = 0.835 W/kg; SAR (10g) = 0.317 W/kg;

Zoom Scan (24.0 mm x 24.0 mm x 22.0 mm): Measurement Grid: 4.0 mm x 4.0 mm x 1.4 mm

Power Drift = 0.06 dB

SAR (1g) = 0.910 W/kg; SAR (10g) = 0.347 W/kg;



05_WLAN5GHz_802.11a 6Mbps_Right Cheek_0mm_Ch149

Communication System: WLAN 5GHz; Frequency: 5745.0

Medium: HSL. Medium parameters used: $f= 5745.0$ MHz; $\sigma= 5.11$ S/m; $\epsilon_r = 34.8$

Ambient Temperature: 23.4°C; Liquid Temperature: 22.9°C

DASY6 Configuration:

- Probe: EX3DV4 - SN7764; ConvF(5.1, 5.1, 5.1); Calibrated: 2022-09-30
- Sensor-Surface: 1.4 mm
- Electronics: DAE4 Sn1279; Calibrated: 2022-10-26
- Phantom: Twin-SAM V8.0 (30deg probe tilt); Serial: 2074
- Measurement Software: cDASY6 V6.6.0.13926

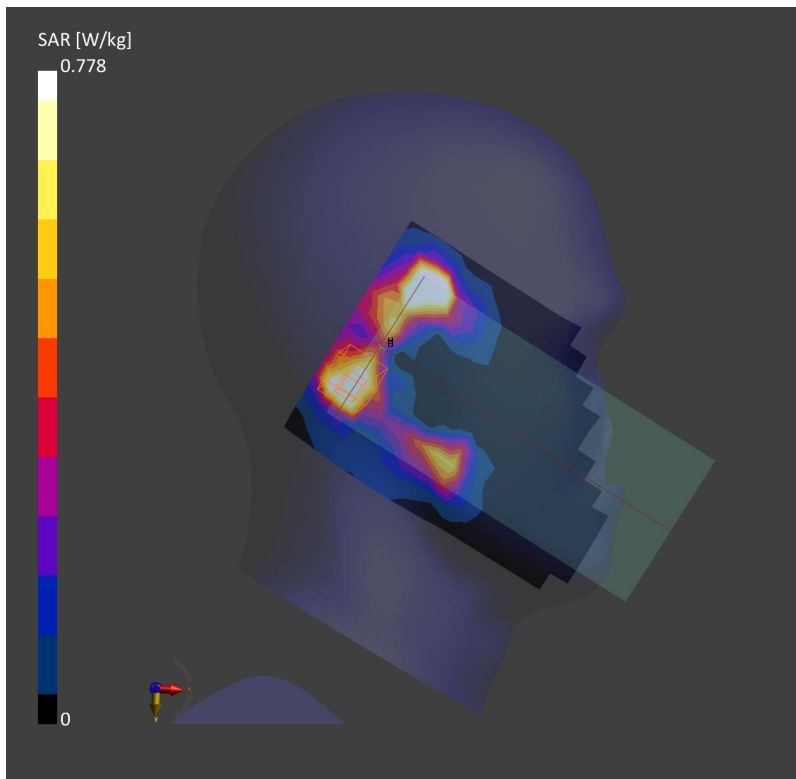
Area Scan (120.0 mm x 200.0 mm): Measurement Grid: 10.0 mm x 10.0 mm

SAR (1g) = 0.736 W/kg; SAR (10g) = 0.224 W/kg;

Zoom Scan (24.0 mm x 24.0 mm x 22.0 mm): Measurement Grid: 4.0 mm x 4.0 mm x 1.4 mm

Power Drift = -0.06 dB

SAR (1g) = 0.778 W/kg; SAR (10g) = 0.248 W/kg;



06_WLAN2.4GHz_802.11b 1Mbps_Back_15mm_Ch1

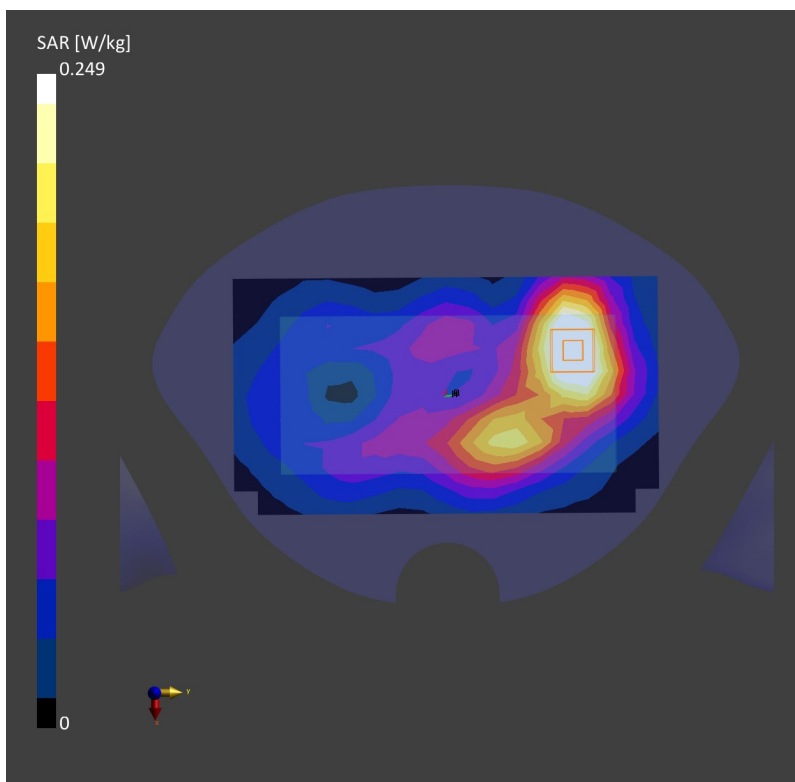
Communication System: WLAN 2.4GHz; Frequency: 2412.0
Medium: HSL. Medium parameters used: $f= 2412.0$ MHz; $\sigma= 1.72$ S/m; $\epsilon_r = 39.5$
Ambient Temperature: 23.3°C; Liquid Temperature: 22.6°C

DASY6 Configuration:

- Probe: EX3DV4 - SN7764; ConvF(8.25, 8.25, 8.25); Calibrated: 2022-09-30
- Sensor-Surface: 1.4 mm
- Electronics: DAE4 Sn1279; Calibrated: 2022-10-26
- Phantom: Twin-SAM V8.0 (30deg probe tilt); Serial: 2074
- Measurement Software: cDASY6 V6.6.0.13926

Area Scan (120.0 mm x 216.0 mm): Measurement Grid: 12.0 mm x 12.0 mm
SAR (1g) = 0.244 W/kg; SAR (10g) = 0.141 W/kg;

Zoom Scan (30.0 mm x 30.0 mm x 30.0 mm): Measurement Grid: 5.0 mm x 5.0 mm x 5.0 mm
Power Drift = -0.07 dB
SAR (1g) = 0.249 W/kg; SAR (10g) = 0.150 W/kg;



07_Bluetooth_1Mbps_Back_15mm_Ch39

Communication System: ISM 2.4 GHz Band; Frequency: 2441.0

Medium: HSL. Medium parameters used: $f= 2441.0$ MHz; $\sigma= 1.73$ S/m; $\epsilon_r = 39.3$

Ambient Temperature: 23.3°C; Liquid Temperature: 22.6°C

DASY6 Configuration:

- Probe: EX3DV4 - SN7764; ConvF(8.25, 8.25, 8.25); Calibrated: 2022-09-30
- Sensor-Surface: 1.4 mm
- Electronics: DAE4 Sn1279; Calibrated: 2022-10-26
- Phantom: Twin-SAM V8.0 (30deg probe tilt); Serial: 2074
- Measurement Software: cDASY6 V6.6.0.13926

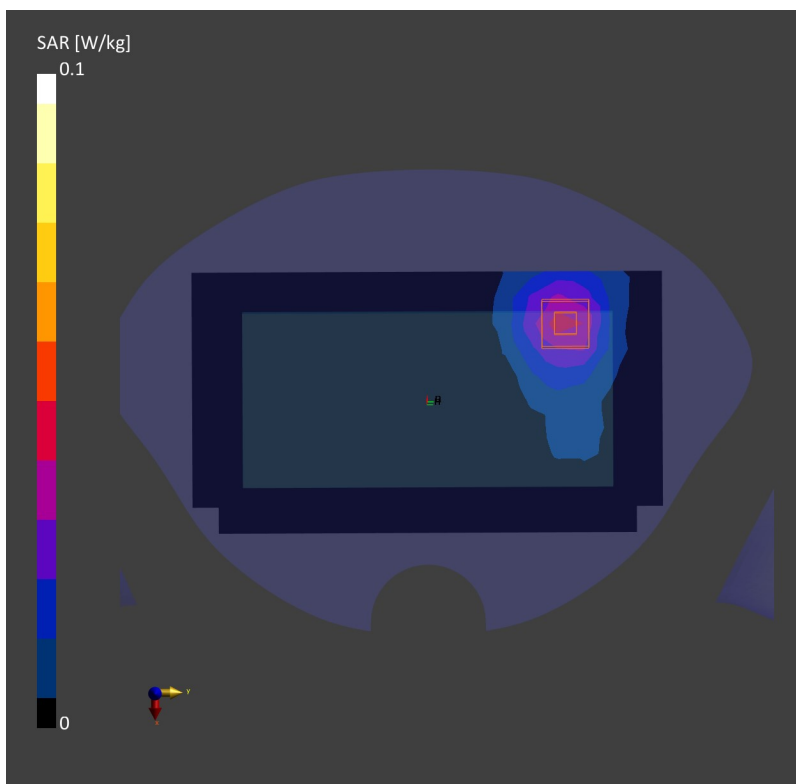
Area Scan (120.0 mm x 216.0 mm): Measurement Grid: 12.0 mm x 12.0 mm

SAR (1g) = 0.038 W/kg; SAR (10g) = 0.021 W/kg;

Zoom Scan (30.0 mm x 30.0 mm x 30.0 mm): Measurement Grid: 5.0 mm x 5.0 mm x 5.0 mm

Power Drift = -0.08 dB

SAR (1g) = 0.040 W/kg; SAR (10g) = 0.022 W/kg;



08_WLAN5GHz_802.11a 6Mbps_Back_15mm_Ch64

Communication System: WLAN 5GHz; Frequency: 5320.0

Medium: HSL. Medium parameters used: $f= 5320.0$ MHz; $\sigma= 4.66$ S/m; $\epsilon_r = 35.6$

Ambient Temperature: 23.2°C; Liquid Temperature: 22.9°C

DASY6 Configuration:

- Probe: EX3DV4 - SN7764; ConvF(5.65, 5.65, 5.65); Calibrated: 2022-09-30
- Sensor-Surface: 1.4 mm
- Electronics: DAE4 Sn1279; Calibrated: 2022-10-26
- Phantom: Twin-SAM V8.0 (30deg probe tilt); Serial: 2074
- Measurement Software: cDASY6 V6.6.0.13926

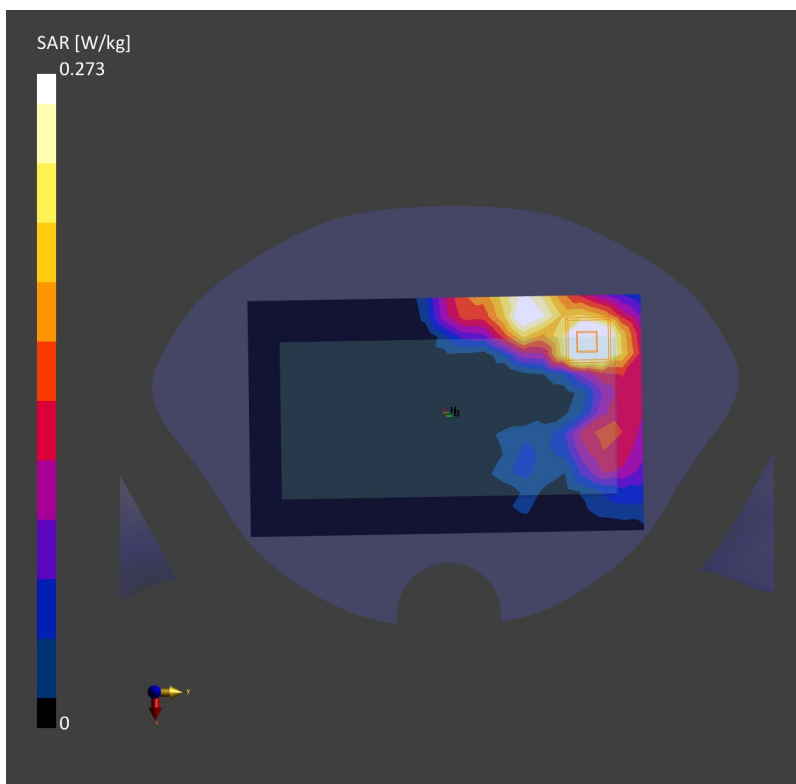
Area Scan (120.0 mm x 200.0 mm): Measurement Grid: 10.0 mm x 10.0 mm

SAR (1g) = 0.281 W/kg; SAR (10g) = 0.115 W/kg;

Zoom Scan (24.0 mm x 24.0 mm x 22.0 mm): Measurement Grid: 4.0 mm x 4.0 mm x 1.4 mm

Power Drift = 0.06 dB

SAR (1g) = 0.273 W/kg; SAR (10g) = 0.112 W/kg;



09_WLAN5GHz_802.11a 6Mbps_Back_15mm_Ch124

Communication System: WLAN 5GHz; Frequency: 5620.0

Medium: HSL. Medium parameters used: $f= 5620.0$ MHz; $\sigma= 4.98$ S/m; $\epsilon_r = 35.1$

Ambient Temperature: 23.4°C; Liquid Temperature: 22.8°C

DASY6 Configuration:

- Probe: EX3DV4 - SN7764; ConvF(4.9, 4.9, 4.9); Calibrated: 2022-09-30
- Sensor-Surface: 1.4 mm
- Electronics: DAE4 Sn1279; Calibrated: 2022-10-26
- Phantom: Twin-SAM V8.0 (30deg probe tilt); Serial: 2074
- Measurement Software: cDASY6 V6.6.0.13926

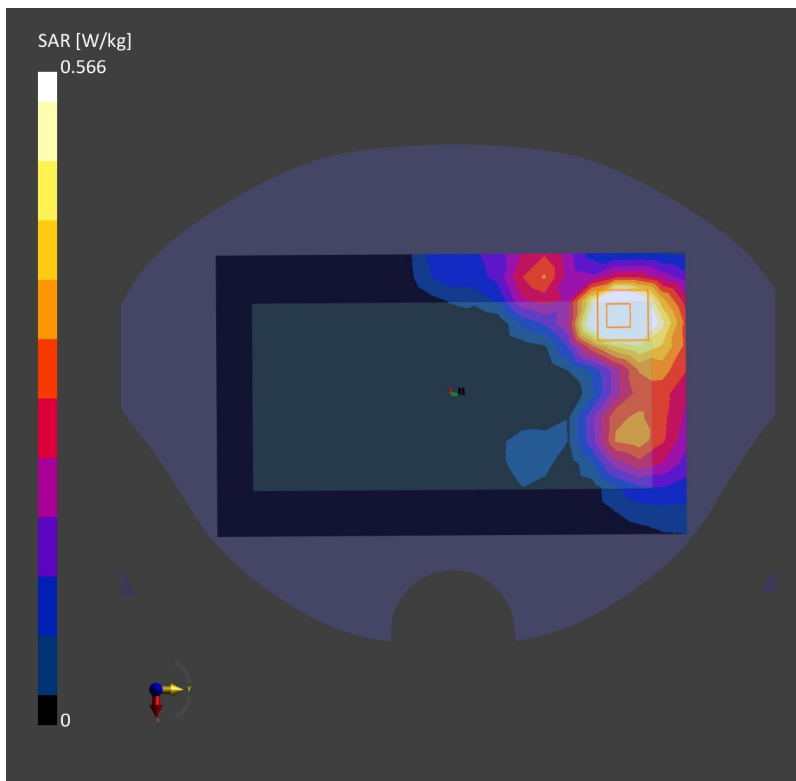
Area Scan (120.0 mm x 200.0 mm): Measurement Grid: 10.0 mm x 10.0 mm

SAR (1g) = 0.625 W/kg; SAR (10g) = 0.254 W/kg;

Zoom Scan (24.0 mm x 24.0 mm x 22.0 mm): Measurement Grid: 4.0 mm x 4.0 mm x 1.4 mm

Power Drift = 0.08 dB

SAR (1g) = 0.566 W/kg; SAR (10g) = 0.237 W/kg;



10_WLAN5GHz_802.11a 6Mbps_Back_15mm_Ch149

Communication System: WLAN 5GHz; Frequency: 5745.0

Medium: HSL. Medium parameters used: $f= 5745.0$ MHz; $\sigma= 5.11$ S/m; $\epsilon_r = 34.9$

Ambient Temperature: 23.3°C; Liquid Temperature: 22.8°C

DASY6 Configuration:

- Probe: EX3DV4 - SN7764; ConvF(5.1, 5.1, 5.1); Calibrated: 2022-09-30
- Sensor-Surface: 1.4 mm
- Electronics: DAE4 Sn1279; Calibrated: 2022-10-26
- Phantom: Twin-SAM V8.0 (30deg probe tilt); Serial: 2074
- Measurement Software: cDASY6 V6.6.0.13926

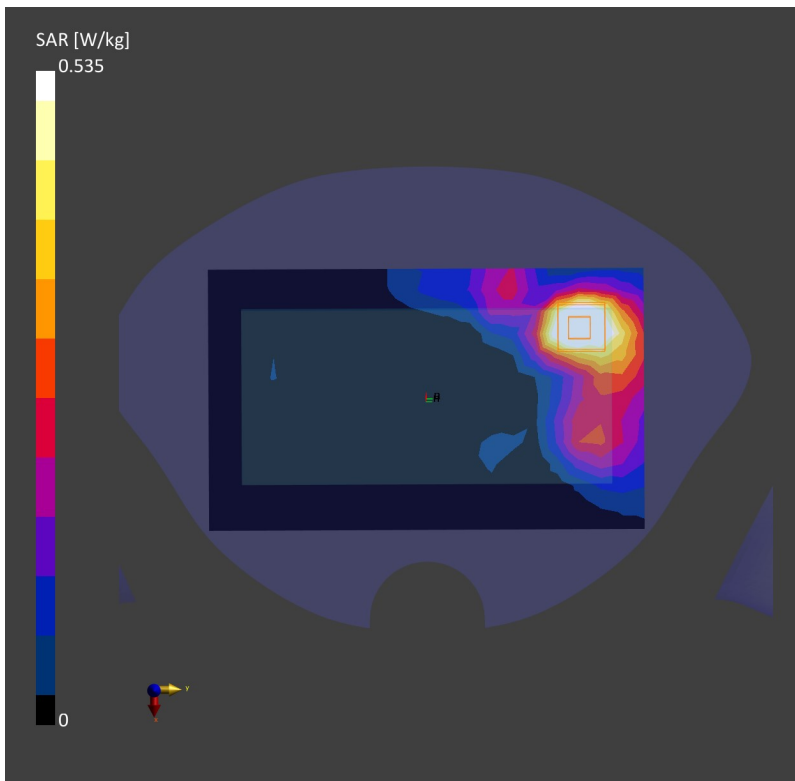
Area Scan (120.0 mm x 200.0 mm): Measurement Grid: 10.0 mm x 10.0 mm

SAR (1g) = 0.571 W/kg; SAR (10g) = 0.231 W/kg;

Zoom Scan (24.0 mm x 24.0 mm x 22.0 mm): Measurement Grid: 4.0 mm x 4.0 mm x 1.4 mm

Power Drift = 0.05 dB

SAR (1g) = 0.535 W/kg; SAR (10g) = 0.211 W/kg;



11_WLAN2.4GHz_802.11b 1Mbps_Front_0mm_Ch11

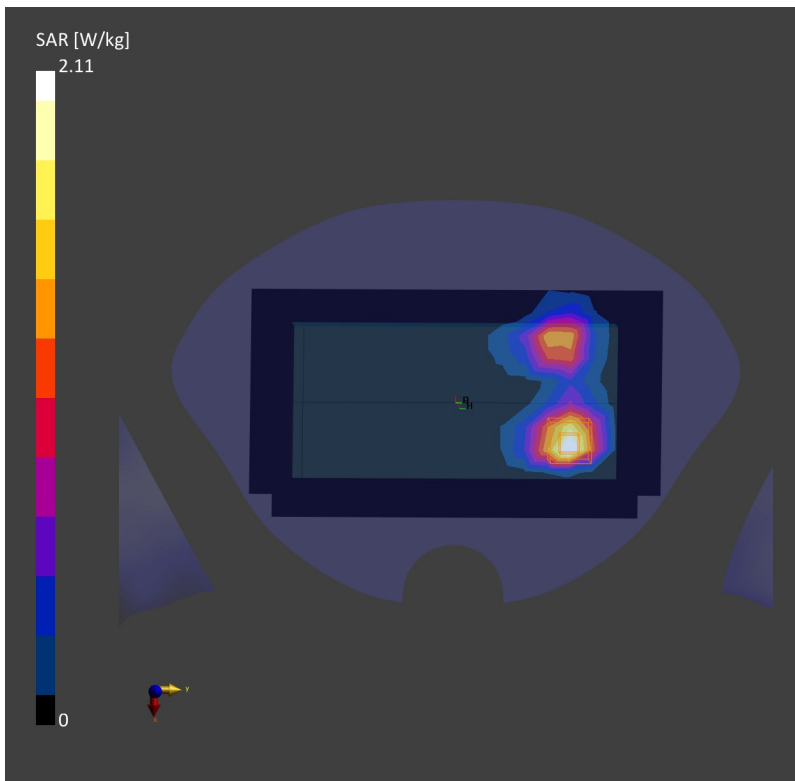
Communication System: WLAN 2.4GHz; Frequency: 2462.0
Medium: HSL. Medium parameters used: $f= 2462.0$ MHz; $\sigma= 1.76$ S/m; $\epsilon_r = 39.2$
Ambient Temperature: 23.3°C; Liquid Temperature: 22.6°C

DASY6 Configuration:

- Probe: EX3DV4 - SN7764; ConvF(8.25, 8.25, 8.25); Calibrated: 2022-09-30
- Sensor-Surface: 1.4 mm
- Electronics: DAE4 Sn1279; Calibrated: 2022-10-26
- Phantom: Twin-SAM V8.0 (30deg probe tilt); Serial: 2074
- Measurement Software: cDASY6 V6.6.0.13926

Area Scan (120.0 mm x 216.0 mm): Measurement Grid: 12.0 mm x 12.0 mm
SAR (1g) = 1.87 W/kg; SAR (10g) = 0.876 W/kg;

Zoom Scan (30.0 mm x 30.0 mm x 30.0 mm): Measurement Grid: 5.0 mm x 5.0 mm x 5.0 mm
Power Drift = -0.04 dB
SAR (1g) = 2.11 W/kg; SAR (10g) = 0.930 W/kg;



12_Bluetooth_1Mbps_Front_0mm_Ch39

Communication System: ISM 2.4 GHz Band; Frequency: 2441.0

Medium: HSL. Medium parameters used: $f= 2441.0$ MHz; $\sigma= 1.73$ S/m; $\epsilon_r = 39.3$

Ambient Temperature: 23.3°C; Liquid Temperature: 22.6°C

DASY6 Configuration:

- Probe: EX3DV4 - SN7764; ConvF(8.25, 8.25, 8.25); Calibrated: 2022-09-30
- Sensor-Surface: 1.4 mm
- Electronics: DAE4 Sn1279; Calibrated: 2022-10-26
- Phantom: Twin-SAM V8.0 (30deg probe tilt); Serial: 2074
- Measurement Software: cDASY6 V6.6.0.13926

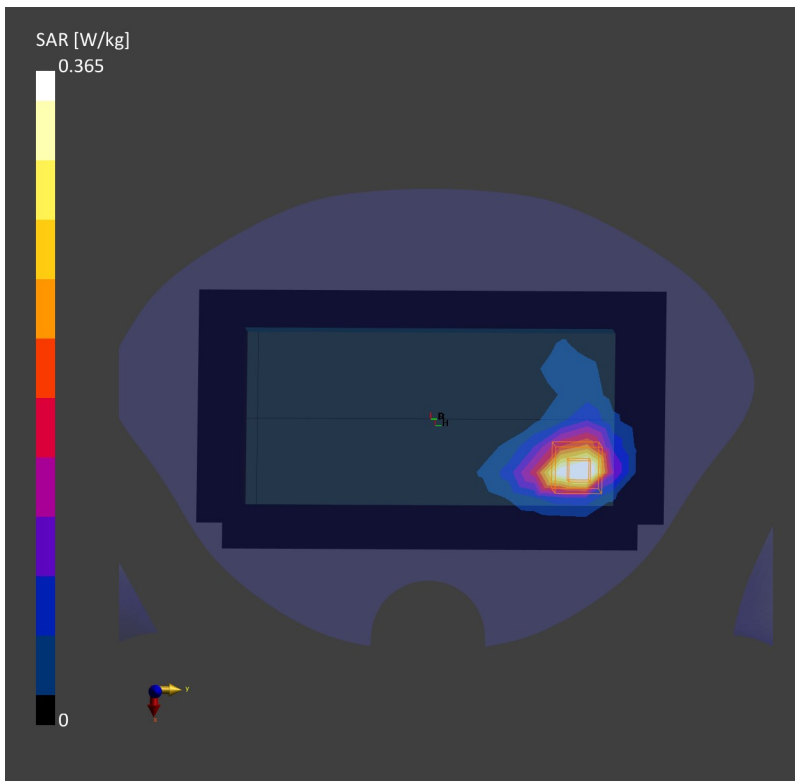
Area Scan (120.0 mm x 216.0 mm): Measurement Grid: 12.0 mm x 12.0 mm

SAR (1g) = 0.342 W/kg; SAR (10g) = 0.155 W/kg;

Zoom Scan (30.0 mm x 30.0 mm x 30.0 mm): Measurement Grid: 5.0 mm x 5.0 mm x 5.0 mm

Power Drift = -0.12 dB

SAR (1g) = 0.365 W/kg; SAR (10g) = 0.158 W/kg;



13_WLAN5GHz_802.11a 6Mbps_Right Side_0mm_Ch64

Communication System: WLAN 5GHz; Frequency: 5320.0

Medium: HSL. Medium parameters used: $f= 5320.0$ MHz; $\sigma= 4.66$ S/m; $\epsilon_r = 35.6$

Ambient Temperature: 23.2°C; Liquid Temperature: 22.9°C

DASY6 Configuration:

- Probe: EX3DV4 - SN7764; ConvF(5.65, 5.65, 5.65); Calibrated: 2022-09-30
- Sensor-Surface: 1.4 mm
- Electronics: DAE4 Sn1279; Calibrated: 2022-10-26
- Phantom: Twin-SAM V8.0 (30deg probe tilt); Serial: 2074
- Measurement Software: cDASY6 V6.6.0.13926

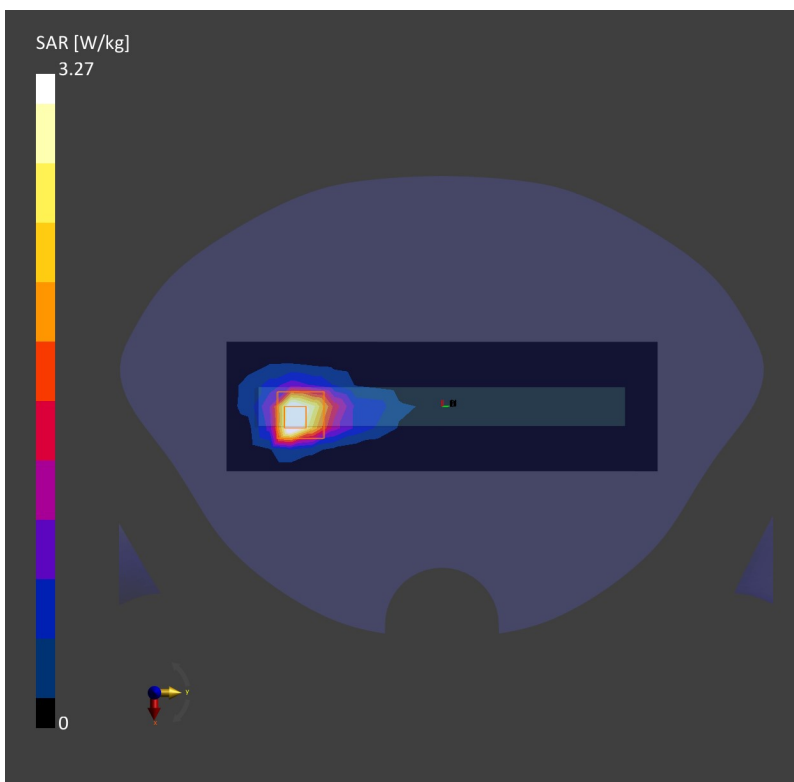
Area Scan (60.0 mm x 200.0 mm): Measurement Grid: 10.0 mm x 10.0 mm

SAR (1g) = 2.97 W/kg; SAR (10g) = 1.03 W/kg;

Zoom Scan (24.0 mm x 24.0 mm x 22.0 mm): Measurement Grid: 4.0 mm x 4.0 mm x 1.4 mm

Power Drift = -0.01 dB

SAR (1g) = 3.27 W/kg; SAR (10g) = 1.10 W/kg;



14_WLAN5GHz_802.11a 6Mbps_Back_0mm_Ch124

Communication System: WLAN 5GHz; Frequency: 5620.0

Medium: HSL. Medium parameters used: $f= 5620.0$ MHz; $\sigma= 4.98$ S/m; $\epsilon_r = 35.1$

Ambient Temperature: 23.4°C; Liquid Temperature: 22.8°C

DASY6 Configuration:

- Probe: EX3DV4 - SN7764; ConvF(4.9, 4.9, 4.9); Calibrated: 2022-09-30
- Sensor-Surface: 1.4 mm
- Electronics: DAE4 Sn1279; Calibrated: 2022-10-26
- Phantom: Twin-SAM V8.0 (30deg probe tilt); Serial: 2074
- Measurement Software: cDASY6 V6.6.0.13926

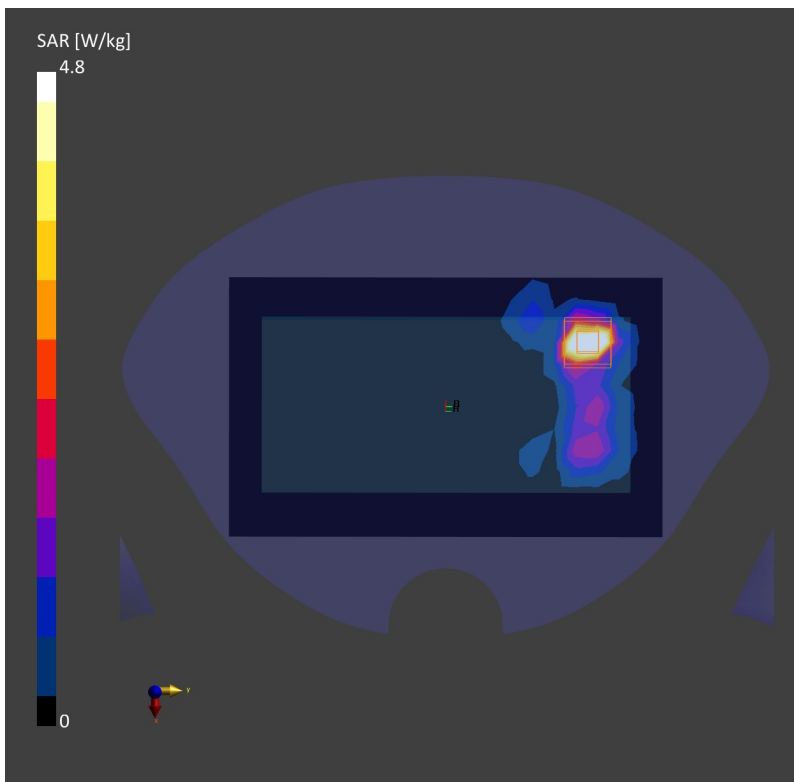
Area Scan (120.0 mm x 200.0 mm): Measurement Grid: 10.0 mm x 10.0 mm

SAR (1g) = 4.39 W/kg; SAR (10g) = 1.12 W/kg;

Zoom Scan (24.0 mm x 24.0 mm x 22.0 mm): Measurement Grid: 4.0 mm x 4.0 mm x 1.4 mm

Power Drift = 0.03 dB

SAR (1g) = 4.80 W/kg; SAR (10g) = 1.23 W/kg;



15_WLAN5GHz_802.11a 6Mbps_Back_0mm_Ch165

Communication System: WLAN 5GHz; Frequency: 5825.0

Medium: HSL. Medium parameters used: $f= 5825.0$ MHz; $\sigma= 5.20$ S/m; $\epsilon_r = 34.8$

Ambient Temperature: 23.3°C; Liquid Temperature: 22.8°C

DASY6 Configuration:

- Probe: EX3DV4 - SN7764; ConvF(5.1, 5.1, 5.1); Calibrated: 2022-09-30
- Sensor-Surface: 1.4 mm
- Electronics: DAE4 Sn1279; Calibrated: 2022-10-26
- Phantom: Twin-SAM V8.0 (30deg probe tilt); Serial: 2074
- Measurement Software: cDASY6 V6.6.0.13926

Area Scan (120.0 mm x 200.0 mm): Measurement Grid: 10.0 mm x 10.0 mm

SAR (1g) = 3.83 W/kg; SAR (10g) = 1.05 W/kg;

Zoom Scan (24.0 mm x 24.0 mm x 22.0 mm): Measurement Grid: 4.0 mm x 4.0 mm x 1.4 mm

Power Drift = -0.01 dB

SAR (1g) = 4.30 W/kg; SAR (10g) = 1.09 W/kg;

