

01_WLAN 6E_802.11ax_HE160 MCS0_Right Cheek_0mm_Ch111

Communication System: U-NII-5; Frequency: 6505.0

Medium: HSL. Medium parameters used: $f= 6505.0$ MHz; $\sigma= 5.53$ S/m; $\epsilon_r = 36.4$

Ambient Temperature: 23.2°C; Liquid Temperature: 22.7°C

DASY6 Configuration:

- Probe: EX3DV4 - SN7764; ConvF(5.5, 5.5, 5.5); Calibrated: 2022-09-30
- Sensor-Surface: 1.4 mm
- Electronics: DAE4 Sn1279; Calibrated: 2021-09-21
- Phantom: Twin-SAM V8.0 (30deg probe tilt); Serial: 2022
- Measurement Software: cDASY6 V6.6.0.13926

Area Scan (120.0 mm x 216.0 mm): Measurement Grid: 8.5 mm x 8.5 mm

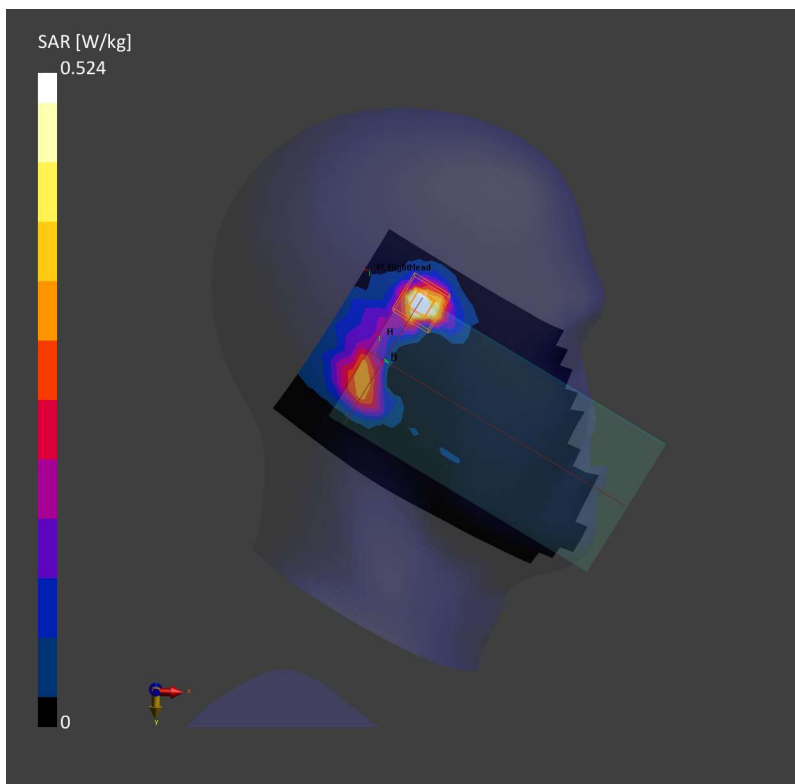
SAR (1g) = 0.522 W/kg; SAR (10g) = 0.151 W/kg;

Zoom Scan (22.0 mm x 22.0 mm x 22.0 mm): Measurement Grid: 3.4 mm x 3.4 mm x 1.4 mm

Power Drift = -0.12 dB

SAR (1g) = 0.524 W/kg; SAR (10g) = 0.155 W/kg;

psAPD (4.0cm², sq) = 3.46 [W/m²]



02_WLAN 6E_802.11ax_HE160 MCS0_Front_15mm_Ch15

Communication System: U-NII-5; Frequency: 6025.0

Medium: HSL. Medium parameters used: $f= 6025.0$ MHz; $\sigma= 5.59$ S/m; $\epsilon_r = 34.6$

Ambient Temperature: 23.3°C; Liquid Temperature: 22.6°C

DASY6 Configuration:

- Probe: EX3DV4 - SN7764; ConvF(5.5, 5.5, 5.5); Calibrated: 2022-09-30
- Sensor-Surface: 1.4 mm
- Electronics: DAE4 Sn1279; Calibrated: 2021-09-21
- Phantom: Twin-SAM V8.0 (30deg probe tilt); Serial: 2022
- Measurement Software: cDASY6 V6.6.0.13926

Area Scan (120.0 mm x 216.0 mm): Measurement Grid: 8.5 mm x 8.5 mm

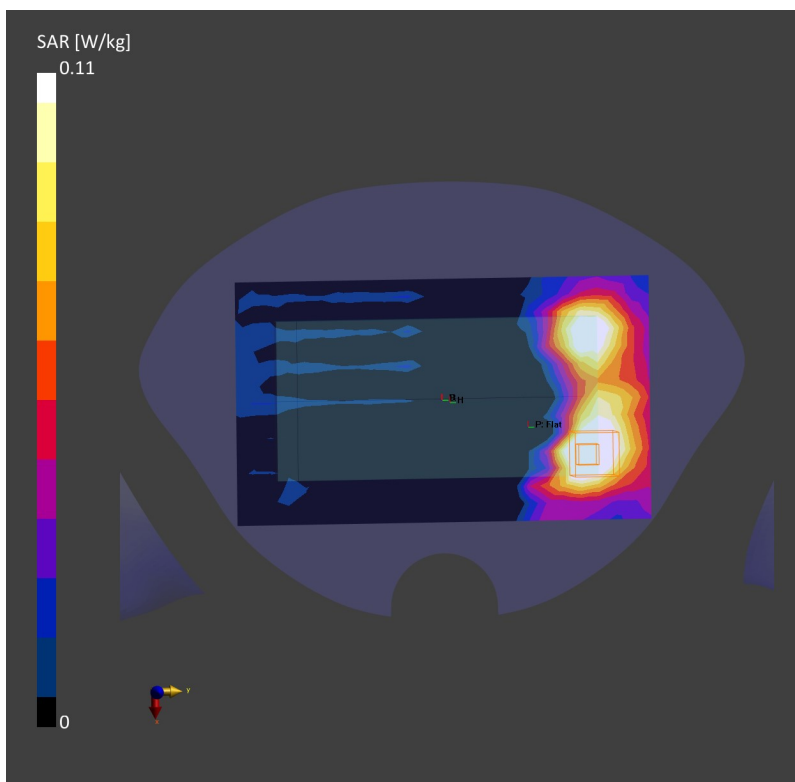
SAR (1g) = 0.127 W/kg; SAR (10g) = 0.051 W/kg;

Zoom Scan (22.0 mm x 22.0 mm x 22.0 mm): Measurement Grid: 3.4 mm x 3.4 mm x 1.4 mm

Power Drift = 0.06 dB

SAR (1g) = 0.110 W/kg; SAR (10g) = 0.043 W/kg;

psAPD (4.0cm², sq) = 0.953 [W/m²]



03_WLAN 6E_802.11ax_HE160 MCS0_Left side_0mm_Ch47

Communication System: U-NII-5; Frequency: 6185.0

Medium: HSL. Medium parameters used: $f= 6185.0$ MHz; $\sigma= 5.78$ S/m; $\epsilon_r = 34.2$

Ambient Temperature: 23.3°C; Liquid Temperature: 22.6°C

DASY6 Configuration:

- Probe: EX3DV4 - SN7764; ConvF(5.5, 5.5, 5.5); Calibrated: 2022-09-30
- Sensor-Surface: 1.4 mm
- Electronics: DAE4 Sn1279; Calibrated: 2021-09-21
- Phantom: Twin-SAM V8.0 (30deg probe tilt); Serial: 2022
- Measurement Software: cDASY6 V6.6.0.13926

Area Scan (48.0 mm x 204.0 mm): Measurement Grid: 8.5 mm x 8.5 mm

SAR (1g) = 1.41 W/kg; SAR (10g) = 0.412 W/kg;

Zoom Scan (22.0 mm x 22.0 mm x 22.0 mm): Measurement Grid: 3.4 mm x 3.4 mm x 1.4 mm

Power Drift = 0.05 dB

SAR (1g) = 1.42 W/kg; SAR (10g) = 0.399 W/kg;

psAPD (4.0cm², sq) = 9.29 [W/m²]

