



## SAR MEASUREMENT REPORT

---

**FCC ID:** HD5-CT40L0N

**Applicant:** Honeywell International Inc  
Honeywell Safety and Productivity Solutions

**Application Type:** Class II Permissive Change

**Product:** DOLPHIN CT40

**Model No.:** CT40-L0N

**Brand Name:** Honeywell

**FCC Classification:** Spread Spectrum Transmitter(DSS)  
Digital Transmission System (DTS)  
Unlicensed National Information Infrastructure (UNII)

**FCC Rule Part(s):** FCC 47 CFR Part 2.1093

**Test Procedure(s):** IEEE 1528:2013; IEEE C95.1- 2005;  
KDB 447498 D01v06; KDB 865664 D01v01r04;  
KDB 648474 D04 v01r03; KDB 248227 D01v02r02

**Test Date:** January 29 ~ 30, 2019

**Reviewed By:**

*Jame Yuan*

( Jame Yuan )

**Approved By:**

*Robin Wu*

( Robin Wu )



The test results relate only to the samples tested.

This equipment has been shown to be capable of compliance with the applicable technical standards as indicated in the measurement report and was tested in accordance with the measurement procedures specified in IEEE1528, KDB 447498 and KDB 865664. Test results reported herein relate only to the item(s) tested.

The test report shall not be reproduced except in full without the written approval of MRT Technology (Suzhou) Co., Ltd.

## Revision History

Report No.	Version	Description	Issue Date	Note
1901RSU044-U2	Rev. 01	Initial Report	02-13-2019	Valid

Note 1: The current CT40-L0N is a variation on the existing CT40-L0N, and the original SAR test report was issued by Balun, report number is "BL-EC1840368-701".

The current CT40-L0N differs from the existing CT40-L0N in the following ways:

- One new detachable battery (M/N: CT50-BTSC) was added
- One new scan engine was added
- One earphone port and one headset was added

Note 2: Worst cases shown in original SAR report "BL-EC1840368-701" were chosen to retest in this report.

---

# CONTENTS

Description	Page
<b>§2.1033 General Information .....</b>	<b>5</b>
<b>1. Introduction.....</b>	<b>6</b>
1.1. Scope .....	6
1.2. MRT Test Location .....	6
<b>2. Product Information.....</b>	<b>7</b>
2.1. General Description for EUT .....	7
2.2. Product Specification Subjective to this Report .....	7
2.3. Description of Available Antennas .....	8
2.4. Ancillary Equipment .....	9
<b>3. Summary of Test Result .....</b>	<b>10</b>
3.1. Test Standards .....	10
3.2. Environment Condition .....	10
3.3. RF Exposure Limits .....	10
3.4. Test Result Summary .....	11
<b>4. Specific Absorption Rate (SAR).....</b>	<b>12</b>
4.1. Introduction.....	12
4.2. Definition .....	12
<b>5. DASY6 Measurement System .....</b>	<b>13</b>
5.1. Introduction.....	13
5.2. DASY6 Measurement System Diagram .....	13
5.3. System Components Details.....	14
<b>6. The SAR Measurement Procedure .....</b>	<b>25</b>
6.1. Measurement Process Diagram.....	25
6.2. Test Position Definition .....	26
6.3. Test Procedure .....	28
<b>7. System Verificaiton.....</b>	<b>31</b>
7.1. Tissue Check.....	31
7.2. System Check .....	35
<b>8. Analysis and Results .....</b>	<b>38</b>
8.1. Antenna Location.....	38
8.2. Conducted Power .....	39

8.3.	Required Configurations of SAR Test.....	43
8.4.	SAR Test Results.....	44
8.5.	SAR Results Deviation .....	47
<b>9.</b>	<b>Simultaneous Transmission Analysis .....</b>	<b>49</b>
<b>10.</b>	<b>Test Equipment Used .....</b>	<b>50</b>
<b>11.</b>	<b>Measurement Uncertainty .....</b>	<b>51</b>
	<b>Annex A - System Check Result .....</b>	<b>53</b>
	<b>Annex B - Test Data Plots.....</b>	<b>61</b>
	<b>Annex C - SAR Test Setup Photos.....</b>	<b>70</b>
	<b>Annex D - EUT External Photos .....</b>	<b>71</b>
	<b>Annex E - Equipment Calibration Report .....</b>	<b>72</b>

## §2.1033 General Information

<b>Applicant:</b>	Honeywell International Inc Honeywell Safety and Productivity Solutions
<b>Applicant Address:</b>	9680 Old Bailes Road, Fort Mill, SC 29707 United States
<b>Manufacturer:</b>	Honeywell International Inc Honeywell Safety and Productivity Solutions
<b>Manufacturer Address:</b>	9680 Old Bailes Road, Fort Mill, SC 29707 United States
<b>Test Site:</b>	MRT Technology (Suzhou) Co., Ltd
<b>Test Site Address:</b>	D8 Building, No.2 Tian'edang Rd., Wuzhong Economic Development Zone, Suzhou, China
<b>FCC Registration No.:</b>	893164
<b>Test Device Serial No.:</b>	19023B1AC6 <input type="checkbox"/> Production <input checked="" type="checkbox"/> Pre-Production <input type="checkbox"/> Engineering

### Test Facility / Accreditations

Measurements were performed at MRT Laboratory located in Tian'edang Rd., Suzhou, China.

- MRT facility is a FCC registered (MRT Reg. No. 893164) test facility with the site description report on file and has met all the requirements specified in Section 2.948 of the FCC Rules.
- MRT facility is an IC registered (MRT Reg. No. 11384A-1) test laboratory with the site description on file at Industry Canada.
- MRT facility is a VCCI registered (R-20025, G-20034, C-20020, T-20020) test laboratory with the site description on file at VCCI Council.
- MRT Lab is accredited to ISO 17025 by the American Association for Laboratory Accreditation (A2LA) under the American Association for Laboratory Accreditation Program (A2LA Cert. No. 3628.01) in EMC, Telecommunications, Radio and SAR testing.



## 1. Introduction

### 1.1. Scope

Measurement and determination of specific absorption rate (SAR) of radio frequency devices including intentional and/or unintentional radiators is compliance with the technical rules and regulations of the Federal Communications Commission.

### 1.2. MRT Test Location

The map below shows the location of the MRT LABORATORY, its proximity to the Taihu Lake. These measurement tests were conducted at the MRT Technology (Suzhou) Co., Ltd. Facility located at D8 Building, No.2 Tian'edang Rd., Wuzhong Economic Development Zone, Suzhou, China. The measurement facility compliant with the test site requirements specified in ANSI C63.4-2014.



## 2. Product Information

### 2.1. General Description for EUT

Product Name:	DOLPHIN CT40
Model No.:	CT40-L0N
Hardware Version:	1.0
Software Version:	OS.02.003
EUT Type:	Portable Device
Exposure Category:	General Population/Uncontrolled Exposure

### 2.2. Product Specification Subjective to this Report

Wi-Fi Specification	
Frequency Range:	<u>For 2.4GHz Wi-Fi</u> 802.11b/g/n-HT20: 2412 ~ 2462 MHz <u>For 5GHz Wi-Fi</u> 802.11a /n-HT20/ac-VHT20: 5180~5240 MHz, 5260~5320 MHz, 5500~5720 MHz, 5745~5825 MHz 802.11n-HT40/ac-VHT40: 5190~5230 MHz, 5270~5310 MHz, 5510~5710 MHz, 5755~5795 MHz 802.11ac-VHT80/ac-VHT80: 5210 MHz, 5290 MHz, 5530 MHz, 5610 MHz, 5690 MHz, 5775 MHz
Channel Number:	<u>For 2.4GHz Wi-Fi</u> 802.11b/g/n-HT20: 11 <u>For 5GHz Wi-Fi</u> 802.11a/n-HT20/ac-VHT20: 25 802.11n-HT40/ac-VHT40: 12 802.11ac-VHT80/ac-VHT80: 6
Type of Modulation:	802.11b: DSSS 802.11a/g/n/ac: OFDM
Data Rate:	802.11b: 1/2/5.5/11Mbps 802.11a/g: 6/9/12/18/24/36/48/54Mbps 802.11n: up to 150Mbps 802.11ac: up to 433.3Mbps

Bluetooth Specification	
Frequency Range	2400MHz~ 2483.5MHz
Channel Number	For Bluetooth: 79 For BT-LE: 40
Channel Spacing	For Bluetooth: 1MHz For BT-LE: 2MHz
Type of Modulation	1Mbps (GFSK), 2Mbps (Pi/4 DQPSK), 3Mbps (8DPSK)

### 2.3. Description of Available Antennas

Operating Condition	Bluetooth BR/EDR/LE (1Tx, 1Rx) 802.11b/g/n for 2.4GHz Wi-Fi (1Tx, 1Rx) 802.11a/n/ac for 5GHz Wi-Fi (1Tx, 1Rx)
Antenna Type	FPC Antenna
Antenna Gain	2.20dBi for 2.4GHz Band, 3.39dBi for 5GHz Band
Simultaneously Transmitting Scenarios	N/A



## 2.4. Ancillary Equipment

Ancillary Equipment 1	Battery
Brand Name	Honeywell
Model No.	CT50-BTSC
Series No.	TWMX1903300397
Capacity	4020mAh/ 15.5Wh
Rated Voltage	DC 3.85V
Charge Voltage	DC 4.4V
Ancillary Equipment 2	Headset
Model No.	PTE-300N

### 3. Summary of Test Result

#### 3.1. Test Standards

No.	Identity	Document Title
1	47 CFR Part 2.1093	Radiofrequency radiation exposure evaluation: portable devices
2	IEEE 1528-2013	IEEE Recommended Practice for Determining the Peak Spatial-Average Specific Absorption Rate (SAR) in the Human Head from Wireless Communications Devices: Measurement Techniques
3	IEEE C95.1-2005	IEEE Standard for Safety Levels with Respect to Human Exposure to Radio Frequency Electromagnetic Fields, 3 kHz to 300 GHz
4	KDB 447498 D01 v06	General RF Exposure Guidance
5	KDB 865664 D01 v01r04	SAR Measurement 100 MHz to 6 GHz
6	KDB 865664 D02 v01r02	RF Exposure Reporting
7	KDB 648474 D04 Handset SAR v01r03	SAR Evaluation Considerations for Wireless Handsets
8	KDB 248227 D01 v02r02	SAR Guidance for IEEE 802.11 (Wi-Fi) Transmitter

#### 3.2. Environment Condition

Ambient Temperature	20.5°C~24.0°C
Temperature of Simulant	20.0°C~23.5°C
Relative Humidity	38%RH ~55%RH

#### 3.3. RF Exposure Limits

Human Exposure	Basic restrictions for electric, magnetic and electromagnetic fields. (Unit in mW/g or W/kg)
Spatial Peak SAR <sup>1</sup> (Head and Body)	1.60
Spatial Average SAR <sup>2</sup> (Whole Body)	0.08
Spatial Peak SAR <sup>3</sup> (Arms and Legs)	4.00

**Notes:**

1. The Spatial Peak value of the SAR averaged over any 1gram of tissue (defined as a tissue volume in the shape of a cube) and over the appropriate averaging time.
2. The Spatial Average value of the SAR averaged over the whole body.
3. The Spatial Peak value of the SAR averaged over any 1 gram of tissue (defined as a tissue volume in the shape of a cube) and over appropriate averaging time.

### 3.4. Test Result Summary

#### Worst SAR List

Configuration	Highest Reported SAR (W/kg)		
	Head 1g - SAR	Body 1g - SAR	Extremity 10g - SAR
2.4GHz band	0.38	0.05	0.27
5GHz Band	0.24	0.16	0.36
Max. Deviation: -0.26 W/kg			

## 4. Specific Absorption Rate (SAR)

### 4.1. Introduction

SAR is related to the rate at which energy is absorbed per unit mass in an object exposed to a radio field. The SAR distribution in a biological body is complicated and is usually carried out by experimental techniques or numerical modeling. The standard recommends limits for two tiers of groups, occupational /controlled and general population/uncontrolled, based on a person's awareness and ability to exercise control over his or her exposure. In general, occupational/controlled exposure limits are higher than the limits for general population/uncontrolled.

### 4.2. Definition

The SAR in the tissue-equivalent liquid can be determined by the rate of temperature increase or by E-field measurements, according to Formulas (1) or (2):

$$SAR = \frac{\sigma E^2}{\rho} \quad (1)$$

$$SAR = c_h \left. \frac{dT}{dt} \right|_{t=0} \quad (2)$$

where

- SAR is the specific absorption rate in W/kg;
- E is the rms value of the electric field strength in the tissue medium in V/m;
- $\sigma$  is the electrical conductivity of the tissue medium in S/m;
- $\rho$  is the mass density of the tissue medium in kg/m<sup>3</sup>;
- $c_h$  is the specific heat capacity of the tissue medium in J/(kg K);

$\left. \frac{dT}{dt} \right|_{t=0}$  is the initial time derivative of temperature in the tissue medium in K/s.

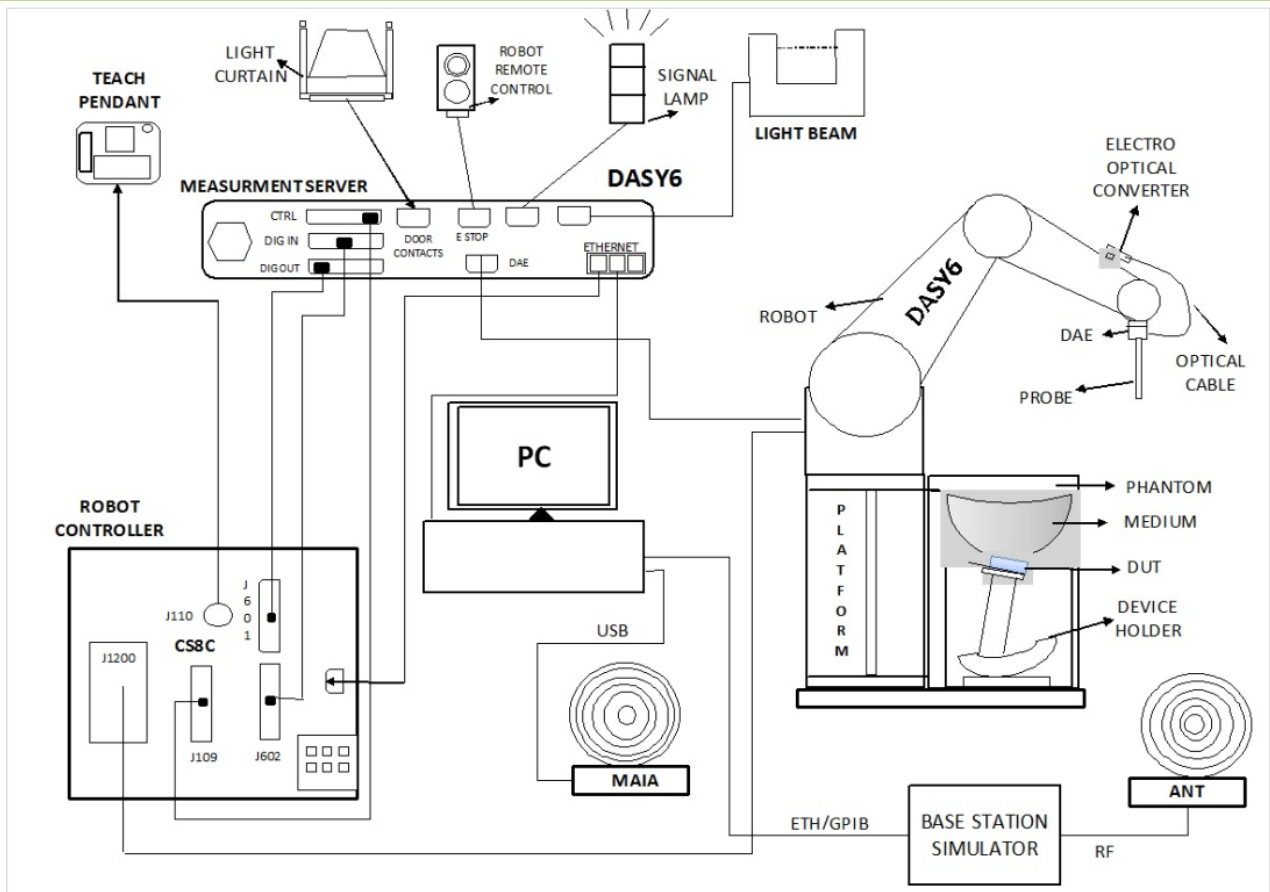
## 5. DASY6 Measurement System

### 5.1. Introduction

DASY6 is the latest generation of the Dosimetric Assessment System optimized for specific absorption rate (SAR) measurements, SAR compliance. DASY6 builds on the power of our industry - leading dosimetric and near-field evaluation system, DASY52. Running on a significantly more robust platform and a more powerful measurement server, DASY6 offers much faster scanning with no sacrifice of measurement precision. All hardware and software are fully compatible with DASY52. The new system seamlessly integrates two software solutions, the novel cDASY V6.6 - optimized for SAR compliance testing to significantly reduce SAR assessment costs - and the widely used DASY V5.2 for generalized near-field evaluations with maximized flexibility.

### 5.2. DASY6 Measurement System Diagram

The DASY6 system in cDASY6/DASY5 V5.2 SAR Configuration is shown below:



The System consist of the following components:

DASY6 Measurement Server, Data Acquisition Electronics (DAE), Probes, Light-Beam Unit, Phantoms, Media, Device Holder for SAM-Twin Phantom, Laptop Extension Kit to Mounting Device, Robot System Platform & Pedestal, Verification of the Parameters with the Dielectric Assessment Kit (DAK), Modulation and Interference Analyzer (MAIA), Omni-Directional Ultra-Wideband Antenna (ANT), cDASY6 software, DASY5 NEO software and SEMCAD data evaluation software.

### 5.3. System Components Details

#### DASY6 Platforms MP6E-TX60L

MP6E-TX60L platform is a compact cost-effective platform based on TX60L. It consists of:

- a stable non-metallic platform for the TX60L robot
- a frame for two standard-size phantoms (1.0 × 0.5 m)
- a frame for one half-size phantom (0.5 × 0.5 m)

It includes two easily moveable trolleys for the phone and tablet/computer positioner and two platforms for positioning dipoles and other antennas.



**Material** The beams consist of a composite of wood and epoxy (permittivity of 3.3 and loss tangent of <0.07)

**Size** The footprint of the platform is 1590 mm × 1060 mm.

#### Robots -TX60L

The MRT DASY6 system uses the high-precision industrial robots TX60L from Staubli SA (France). The TX robot family - the successor of the well-known RX robot family - continues to offer the features important for DASY6 applications:

- High precision (repeatability 0.02mm)
- High reliability (industrial design)
- Low maintenance costs (virtually maintenance-free as all gears are direct drive, no belt drives)
- Jerk-free straight movements (brushless synchron motors, no stepper motors)
- Low extremely low frequency (ELF) interference (motor control fields are shielded by the closed metallic construction)

The robots are controlled by the Staubli CS8c robot controllers. All information regarding the use and maintenance of the robot arm and the robot controller is provided on CDs delivered with the robot. Paper manuals are available directly from Staubli upon request.



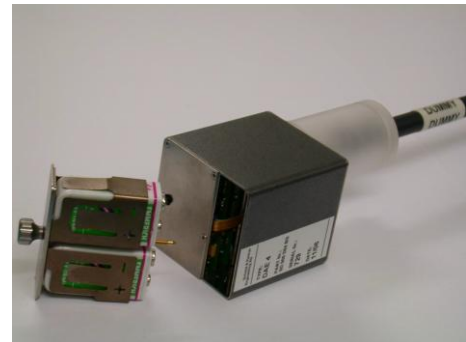
### DASY6 Measurement Server

The DASY6 measurement server is based on a PC/104 CPU board with a 400MHz intel ULV Celeron, 128MB chip-disk and 128MB RAM. The necessary circuits for communication with the DAE4 electronics box, as well as the 16-bit AD converter system for optical detection and digital I/O interface are contained on the DASY6 I/O board, which is directly connected to the PC/104 bus of the CPU board. The measurement server performs all real-time data evaluations of field measurements and surface detection, controls robot movements, and handles safety operations.



### Data Acquisition Electronics (DAE)

The data acquisition electronics (DAE4) consist of a highly sensitive electrometer-grade preamplifier with auto-zeroing, a channel and gain-switching multiplexer, a fast 16-bit AD-converter, and a command decoder with a control logic unit. Transmission to the measurement server is accomplished through an optical downlink for data and status information, as well as an optical uplink for commands and the clock.



## Probes

### E-Field Probe(EX3DV4)

The SAR measurement is conducted with the dosimetric probe manufactured by SPEAG. The probe is specially designed and calibrated for use in liquid with high permittivity. The dosimetric probe has special calibration in liquid at different frequency. SPEAG conducts the probe calibration in compliance with international and national standards (e.g. IEEE 1528, EN 62209-1, IEC 62209, etc.) under ISO 17025.

#### Construction:

Symmetric design with triangular core Built-in shielding against static charges PEEK enclosure material (resistant to organic solvents, e.g., DGBE)

Frequency: 4 MHz ~ 10 GHz

Linearity:  $\pm 0.2$  dB (30 MHz ~ 10 GHz)

#### Directivity:

$\pm 0.1$  dB in TSL (rotation around probe axis)

$\pm 0.3$  dB in TSL (rotation normal to probe axis)

Dynamic Range: 10  $\mu$ W/g to 100 mW/g; Linearity:  $\pm 0.2$  dB (noise: typically  $< 1$   $\mu$ W/g)

#### Dimensions:

Overall length: 337 mm (Tip: 20 mm)

Tip diameter: 2.5 mm (Body: 12 mm)

Typical distance from probe tip to dipole centers: 1 mm

#### Applications:

High precision dosimetric measurements in any exposure scenario (e.g., very strong gradient fields); the only probe that enables compliance testing for frequencies up to 6 GHz with precision of better than 30%.



### MSTV1 (Mother Scan Teaching V1) Electronics & TP6V2 (Teaching Probe 6V2) Probe

MSTV1 (Mother Scan Teaching V1) electronics together with the TP6V2 (Teaching Probe 6V2) probe is used for mother scan of DASY6 system. This probe uses a 3D Renishaw LP2 sensor which ensures accurate detection of any shape and a measurement repeatability of 8  $\mu$ m.





## Light-Beam Unit

The light beam switch allows automatic "tooling" of the probe. During the process, the actual position of the probe tip with respect to the robot arm, as well as the probe length and the horizontal probe offset, are measured. The software then corrects all movements within the measurement jobs, such that the robot coordinates are valid for the probe tip.



The repeatability of this process is better than 0.1 mm. If a position has been taught with an aligned probe, the same position will be reached with another aligned probe within 0.1 mm, even if the other probe has different dimensions. During probe rotations, the probe tip will keep its actual position.

## Phantoms

### SAM-Twin Phantom

The shell corresponds to the specifications of the Specific Anthropomorphic Mannequin (SAM) phantom defined in IEEE 1528 and IEC 62209-1. It enables the dosimetric evaluation of left and right hand phone usage as well as body-mounted usage at the flat phantom region. A cover prevents evaporation of the liquid. Reference markings on the phantom allow the complete setup of all predefined phantom positions and measurement grids by teaching three points with the robot.

SAM-Twin V5.0 and higher has the same shell geometry and is manufactured from the same material as SAM-Twin V4.0, but with the top structure reinforced.

Material Vinyl ester, fiberglass reinforced (VE-GF)

Liquid Compatibility The phantom shell is compatible with SPEAG tissue simulating liquids (sugar and oil based). Use of other liquids may render the phantom warranty void (see note or consult SPEAG support).

Shell Thickness  $2 \pm 0.2$  mm ( $6 \pm 0.2$  mm at ear point)

Dimensions Length: 1000 mm  
(incl. Wooden Width: 500 mm  
Support) Height: adjustable feet

Filling Volume approx. 25 liters

Support DASY6: standard-size platform slot  
DASY52 stand-alone: SPEAG standard phantom table

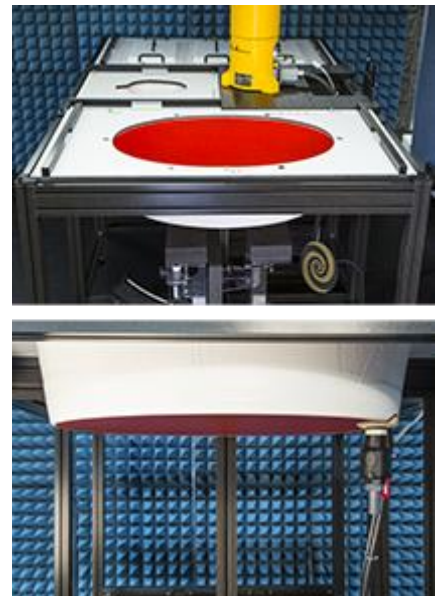


## ELI phantom

The ELI phantom is used for compliance testing of handheld and body-mounted wireless devices in the frequency range of 30 MHz to 6 GHz. ELI is fully compatible with the IEC 62209-2 standard and all known tissue simulating liquids. ELI has been optimized regarding its performance and can be integrated into our standard phantom tables. A cover prevents evaporation of the liquid. Reference markings on the phantom allow installation of the complete setup, including all predefined phantom positions and measurement grids, by teaching three points. The phantom is compatible with all SPEAG dosimetric probes and dipoles.

ELI V5.0 and higher has the same shell geometry and is manufactured from the same material as ELI V4.0, but has reinforced top structure. ELI V6.0, released in August 2014, has the same shell geometry as ELI V4.0 but offers increased longterm stability.

<b>Material</b>	Vinyl ester, fiberglass reinforced (VE-GF)
<b>Liquid Compatibility</b>	The phantom shell is compatible with SPEAG tissue simulating liquids (sugar and oil based). Use of other liquids may render the phantom warranty void (see note or consult SPEAG support).
<b>Shell Thickness</b>	$2.0 \pm 0.2$ mm (bottom plate)
<b>Dimensions</b>	Major axis: 600 mm Minor axis: 400 mm
<b>Filling Volume</b>	approx. 30 liters
<b>Support</b>	DASY6: standard-size platform slot DASY52 stand-alone: SPEAG standard phantom table



### SAM Face Down Phantom

The SAM Face Down Phantom V10 allows assessment of the exposure of the face and in particular the eyes for handheld devices operated in front of the face. e.g., video phones, cameras, organizers, etc. It is manufactured from high precision injection molded polypropylene. The Mounting Device for Transmitters including extensions kit can be used to position the device.

Material	Epoxy based
Liquid Compatibility	The phantom shell is compatible with SPEAG tissue simulating liquids (sugar and oil based). Use of other liquids may render the phantom warranty void (see note or consult SPEAG support).
Shell Thickness	$2 \pm 0.2$ mm (6 mm at ear point)
Head Shape	Standard compatible SAM head.



### SAM Head Stand Phantom

The SAM Head Stand Phantom V10 allows assessment of the exposure of the top-head or around-the-head wireless accessories, e.g., head-belts, etc. It is manufactured from high precision injection molded polypropylene. The Mounting Device for Transmitters including extensions kit can be used to position the device.

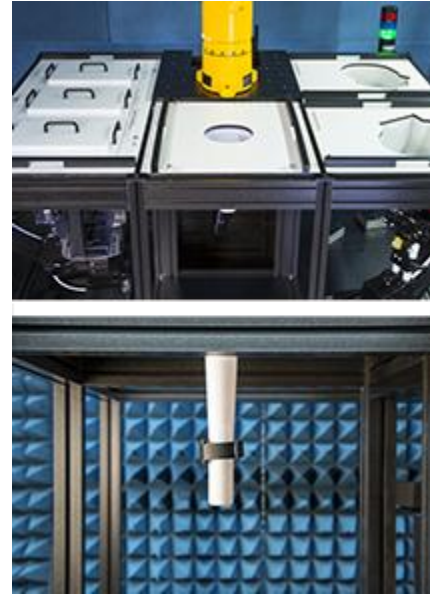
Material	Epoxy based
Liquid Compatibility	The phantom shell is compatible with SPEAG tissue simulating liquids (sugar and oil based). Use of other liquids may render the phantom warranty void (see note or consult SPEAG support).
Shell Thickness	$2 \pm 0.2$ mm (6 mm at ear point)
Head Shape	Standard compatible SAM head.



### Wrist Phantom

The Wrist Phantom V10 is shape-compatible with the CTIA approved OTA GFPC-V1 and optimized for SAR evaluation of watches and other wireless hand accessories.

Material	Epoxy based
Liquid Compatibility	The phantom shell is compatible with SPEAG tissue simulating liquids (sugar and oil based). Use of other liquids may render the phantom warranty void (see note or consult SPEAG support).
Shell Thickness	Shell Thickness
Wrist Shape	Design compatible with CTIA forearm.



## Device Holder for SAM-Twin Phantom

The SAR in the phantom is approximately inversely proportional to the square of the distance between the source and the liquid surface. For a source at 5mm distance, a positioning uncertainty of  $\pm 0.5\text{mm}$  would produce uncertainty in the SAR of  $\pm 20\%$ . Accurate device positioning is therefore crucial for accurate and repeatable measurements. The positions at which the devices must be measured are defined by the standards.

### MD4HHTV5 - Mounting Device for Hand-Held Transmitters

In combination with the Twin SAM V5.0/V5.0c or ELI phantoms, the Mounting Device for Hand-Held Transmitters enables rotation of the mounted transmitter device to specified spherical coordinates. At the heads, the rotation axis is at the ear opening. Transmitter devices can be easily and accurately positioned according to IEC 62209-1, IEEE 1528, FCC, or other specifications. The device holder can be locked for positioning at different phantom sections (left head, right head, flat).

**Material:** Polyoxymethylene (POM)



### MDA4WTV5 - Mounting Device Adaptor for Ultra Wide Transmitters

An upgrade kit to Mounting Device to enable easy mounting of wider devices like big smart-phones, e-books, small tablets, etc. It holds devices with width up to 140 mm.

**Material:** Polyoxymethylene (POM)



### MDA4SPV6 - Mounting Device Adaptor for Smart Phones

The solid low-density MDA4SPV6 adaptor assuring no impact on the DUT radiation performance and is conform with any DUT design and shape.

**Material:** ROHACELL





### **MD4LAPV5 - Mounting Device for Laptops and other Body-Worn Transmitters**

In combination with the Twin SAM V5.0/V5.0c or ELI phantoms, the Mounting Device (Body-Worn) enables testing of transmitter devices according to IEC 62209-2 specifications. The device holder can be locked for positioning at a flat phantom section.

**Material:** Polyoxymethylene (POM), PET-G, Foam



### **MDA4LAP - Mounting Device Adaptor for Laptops**

A simple but effective and easy-to-use extension for the Mounting Device; facilitates testing of larger devices (e.g., laptops, cameras, etc.) according to IEC 62209-2; lightweight and fits easily on the upper part of the Mounting Device in place of the phone positioner. The extension is fully compatible with the Twin SAM as well as ELI and other Flat Phantoms.

**Material:** Polyoxymethylene (POM), PET-G, Foam



## **Modulation and Interference Analyzer(MAIA)**

MAIA is a hardware interface used to evaluate the modulation and audio interference characteristics of RF signals in the frequency range 698 - 6000 MHz. DASY6 evaluates the time-domain and frequency domain properties of the uplink signal transmitted by the DUT during SAR measurement with MAIA. MAIA uses USB powered active electronics to identify the modulation of the DUT. It can be operated over the air interface using the built-in ultra-broadband planar log spiral antenna (698 - 6000 MHz) or in conducted mode using the coaxial SMA 50 Ohm connector (300 - 6000 MHz).



To prevent damage in conducted mode due to high peak power, an external RF attenuator may be mounted. The LED on the MAIA hardware also indicates whether it is connected.

### DAK-3.5 (200MHz – 20GHz)

This precision dielectric measurement system is designed to cover the 200MHz – 20GHz frequency range with a single open-ended coaxial dielectric probe. The system uses advanced algorithms and novel hardware to measure the dielectric properties of liquids, solids, and semi-solids over a broad range of parameters. The measurement method is fast and non-destructive to the material under test.



Evaluation of reference liquids over a broad frequency range for specific absorption rate (SAR) measurements, in accordance with IEC 62209, IEEE 1528, and several federal regulations.

Evaluating Software: DAK software version 2.0

#### MRT simulating liquid

Product	Test Frequency (MHz)	Main Ingredients
HSL450	400 – 500	Water, Sucrose, NaCl
MSL450	400 – 500	Water, Sucrose, NaCl

#### Speag Broad-Band simulating liquid

Product	Test Frequency (MHz)	Main Ingredients
HBBL600-10000V6	600 – 10000	Water, Oil
MBBL600-6000V6	600 – 6000	Water, Oil

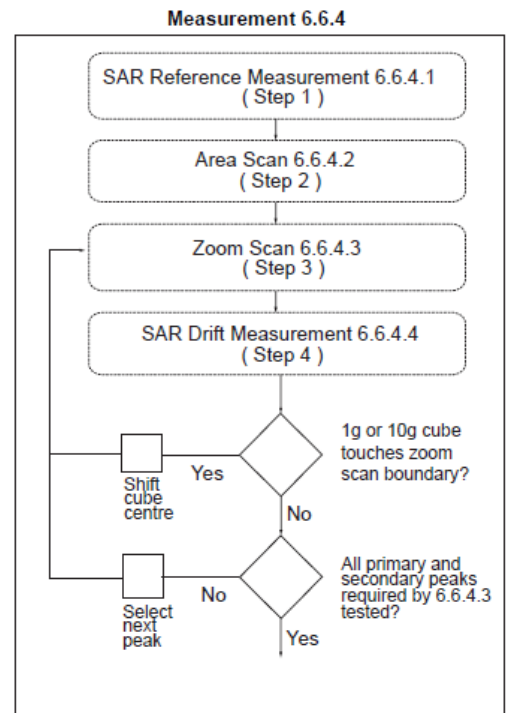
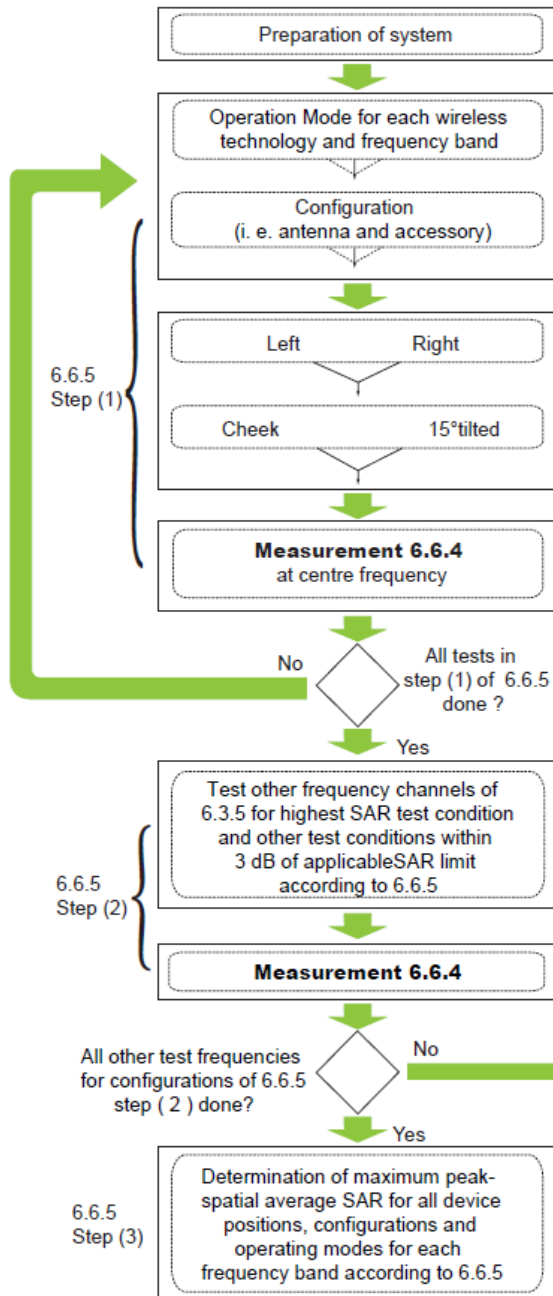


## 6. The SAR Measurement Procedure

### 6.1. Measurement Process Diagram

#### General Procedure

For IEEE1528-2013 Head SAR



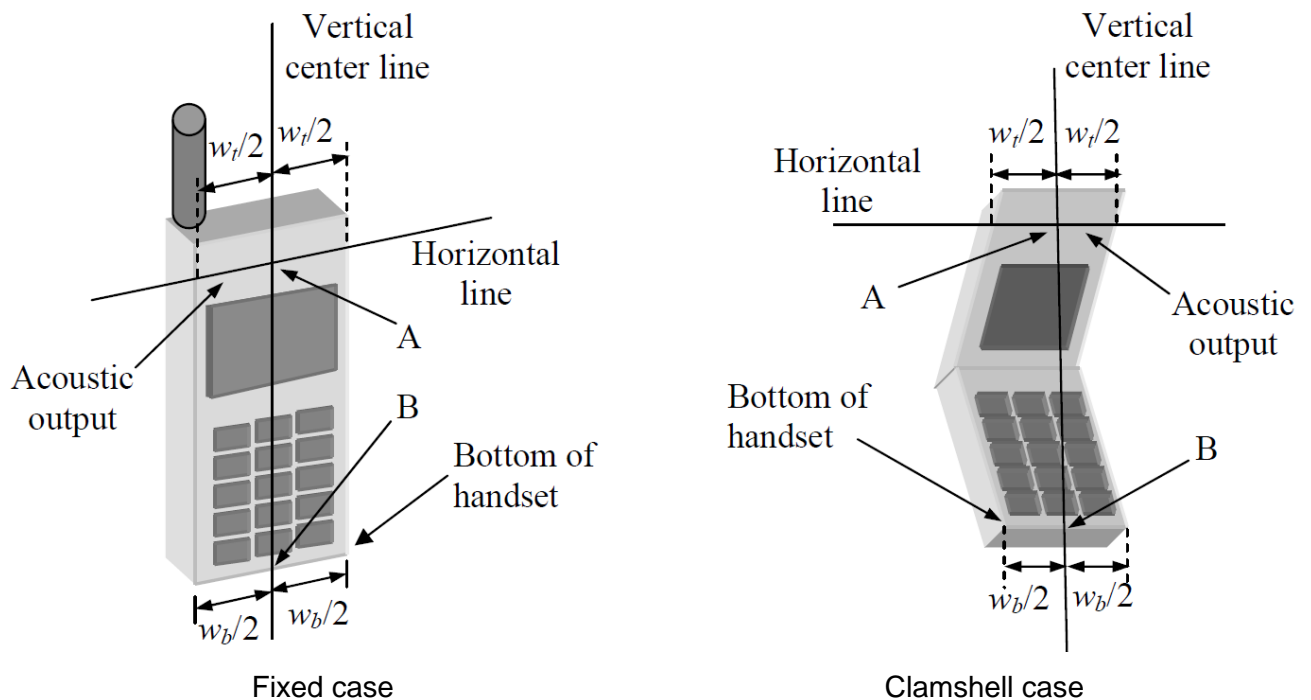
#### For Body SAR

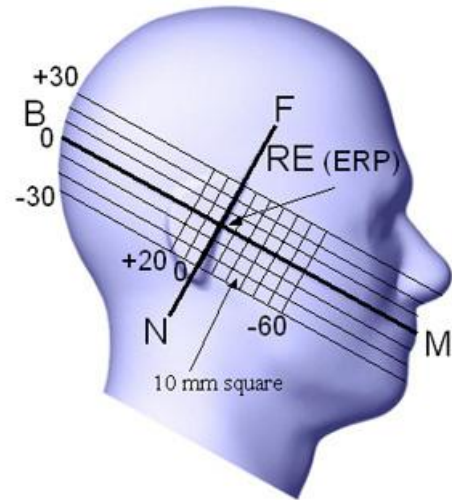
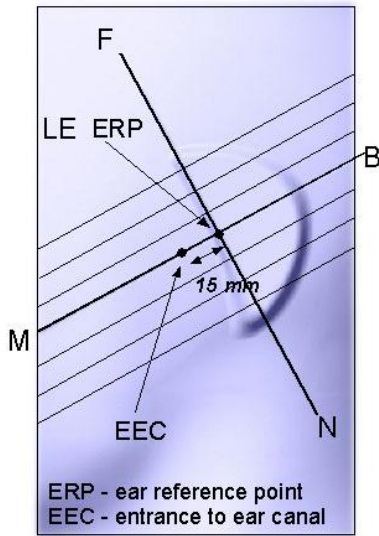
SAR scan procedures described in section 2.7 of KDB 865664 D01 v01r04 should be applied to body SAR test.

## 6.2. Test Position Definition

### ■ Head SAR Test Position

Define two imaginary lines on the handset—the vertical centerline and the horizontal line. The vertical centerline passes through two points on the front side of the handset—the midpoint of the width  $w_t$  of the handset at the level of the acoustic output [point A in Fixed case and Clamshell case], and the midpoint of the width  $w_b$  at the bottom of the handset (point B). The horizontal line is perpendicular to the vertical centerline and passes through the center of the acoustic output [see Fixed case]. The horizontal line is also tangential to the face of the handset at point A. The two lines intersect at point A. Note that for many handsets, point A coincides with the center of the acoustic output; however, the acoustic output may be located elsewhere on the horizontal line. Also note that the vertical centerline is not necessarily parallel to the front face of the handset [see Clamshell case], especially for clamshell handsets, handsets with flip covers, and other irregularly-shaped handsets, the vertical centerline passes through point A but not the tip edge of the phone.




**Key**

- B Direction of B-M line back endpoint
- F Direction of N-F line front endpoint
- N Direction of N-F line neck endpoint
- M Mouth reference point
- LE Left ear reference point (ERP)

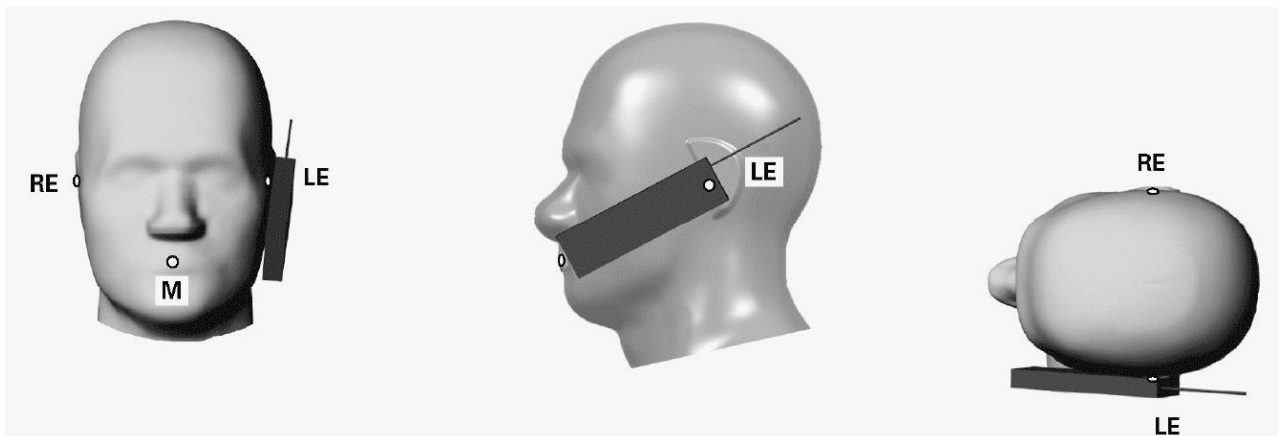
**Key**

- B Line B-M back endpoint
- M Line B-M front endpoint
- N Line N-F neck endpoint
- F Line N-F front endpoint
- RE Right ear reference point (ERP)

**Cheek Position**

The cheek position has the following characteristics, based on the geometrical lines described above:

- The N-F line (see above) is in the plane defined by the handset vertical centerline and horizontal line
- Handset touches the pinna
- The handset vertical centerline is aligned with the Reference Plane.

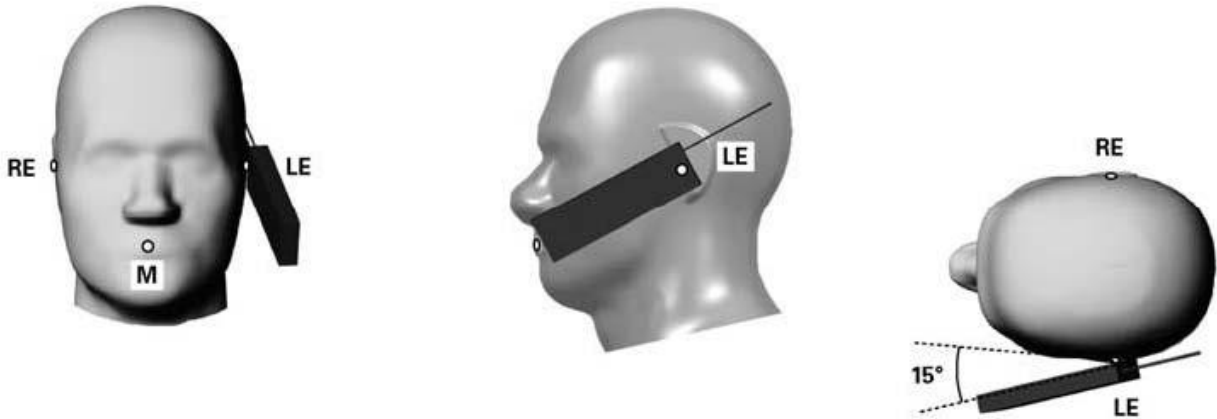

**Key**

- M Mouth reference point
- LE Left ear reference point
- RE Right ear reference point

### Tilt Position

The tilt position is established as follows:

- Repeat the steps to place the device in the cheek position.
- While maintaining the orientation of the handset, move the handset away from the pinna along the line passing through RE and LE far enough to allow a rotation of the handset away from the cheek by  $15^\circ$ .
- Rotate the handset around the horizontal line by  $15^\circ$ .
- While maintaining the orientation of the handset, move the handset towards the phantom on the line passing through RE and LE until any part of the handset touches the ear. The tilt position is obtained when the contact point is on the pinna. If contact occurs at any location other than the pinna, e.g., the antenna at the back of the phantom head, the angle of the handset shall be reduced. In this case, the tilt position is obtained if any point on the handset is in contact with the pinna and a second point on the handset is in contact with the phantom, e.g., the antenna with the back of the head.



### Key

- M Mouth reference point
- LE Left ear reference point
- RE Right ear reference point

### ■ Body SAR Test Position

For body-worn accessory, hotspot mode and other exposure conditions to human body should be conducted pursuant to the test position requirements of SAR KDBs for certain product.

## 6.3. Test Procedure

### Step 1 Setup a Connection

First, engineer should record the conducted power before the test. Then establish a call in handset at the maximum power level with a base station simulator via air interface, or make the EUT establish transmission by itself in testing band. Place the EUT to certain test position.

### Step 2 Power Reference Measurements

To measure the local E-field value at a fixed location which value will be taken as a reference value for

calculating a possible power drift.

### Step 3 Area Scan

The Area Scan is used as a fast scan in two dimensions to find the area of high field values, before doing a fine measurement around the hot spot. The sophisticated interpolation routines implemented in DASY software can find the maximum locations even in relatively coarse grids. When an Area Scan has measured all reachable points, it computes the field maximal found in the scanned area, within a range of the global maximum. The range (in dB) is specified in the standards for compliance testing. For example, a 2 dB range is required in IEEE Standard 1528 and IEC 62209 standards, whereby 3 dB is a requirement when compliance is assessed in accordance with the ARIB standard (Japan). If only one Zoom Scan follows the Area Scan, then only the absolute maximum will be taken as reference. For cases where multiple maximums are detected, the number of Zoom Scans has to be increased accordingly.

**Area Scan Parameters extracted from KDB 865664 D01v01r04**

	≤ 3 GHz	> 3 GHz
Maximum distance from closest measurement point (geometric center of probe sensors) to phantom surface	5 mm ± 1 mm	$\frac{1}{2} \cdot \delta \cdot \ln(2)$ mm ± 0.5 mm
Maximum probe angle from probe axis to phantom surface normal at the measurement location	30° ± 1°	20° ± 1°
Maximum area scan spatial resolution: $\Delta x_{Area}$ , $\Delta y_{Area}$	≤ 2 GHz: ≤ 15 mm 2 - 3 GHz: ≤ 12 mm	3 - 4 GHz: ≤ 12 mm 4 - 6 GHz: ≤ 10 mm
	When the x or y dimension of the test device, in the measurement plane orientation, is smaller than the above, the measurement resolution must be ≤ the corresponding x or y dimension of the test device with at least one measurement point on the test device.	
Note: $\delta$ is the penetration depth of a plane-wave at normal incidence to the tissue medium; see IEEE Std 1528-2013 for details.		

#### Step 4 Zoom Scan

Zoom Scans are used to assess the peak spatial SAR values within a cubic averaging volume containing 1 g and 10 g of simulated tissue. The Zoom Scan measures points (refer to table below) within a cube whose base faces are centered on the maxima found in a preceding area scan job within the same procedure. When the measurement is done, the Zoom Scan evaluates the averaged SAR for 1 g and 10 g and displays these values next to the job's label.

**Zoom Scan Parameters extracted from KDB 865664 D01 v01r04**

			≤ 3 GHz	> 3 GHz
Maximum zoom scan spatial resolution: $\Delta x_{Zoom}$ , $\Delta y_{Zoom}$			≤ 2 GHz: ≤ 8 mm 2 - 3 GHz: ≤ 5 mm*	3 - 4 GHz: ≤ 5 mm* 4 - 6 GHz: ≤ 4 mm*
Maximum zoom scan spatial resolution, normal to phantom surface	uniform grid: $\Delta z_{Zoom}(n)$		≤ 5 mm	3 - 4 GHz: ≤ 4 mm 4 - 5 GHz: ≤ 3 mm 5 - 6 GHz: ≤ 2 mm
	graded grid	$\Delta z_{Zoom}(1)$ : between 1 <sup>st</sup> two points closest to phantom surface	≤ 4 mm	3 - 4 GHz: ≤ 3 mm 4 - 5 GHz: ≤ 2.5 mm 5 - 6 GHz: ≤ 2 mm
		$\Delta z_{Zoom}(n>1)$ : between subsequent points	≤ 1.5 · $\Delta z_{Zoom}(n-1)$ mm	
Minimum zoom scan volume	x, y, z		≥ 30 mm	3-4 GHz: ≥ 28 mm 4-5 GHz: ≥ 25 mm 5-6 GHz: ≥ 22 mm
Note: * When zoom scan is required and the reported SAR from the area scan based 1-g SAR estimation procedures of KDB Publication 447498 is ≤ 1.4 W/kg, ≤ 8 mm, ≤ 7 mm and ≤ 5 mm zoom scan resolution may be applied, respectively, for 2 GHz to 3 GHz, 3 GHz to 4 GHz and 4 GHz to 6 GHz.				

#### Step 5 Power Drift Measurements

Repetition of the E-field measurement at the fixed location mentioned in Step 1 to make sure the two results differ by less than ± 0.2 dB.

#### Step 6 Test Data

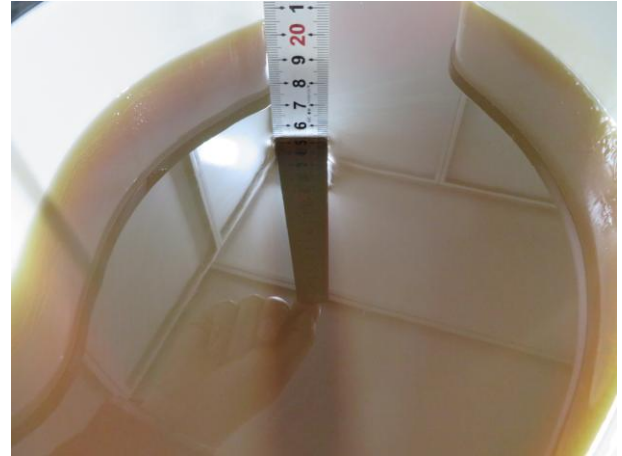
After the test, SAR test data should be exported by SEMCAD.

## 7. System Verificaiton

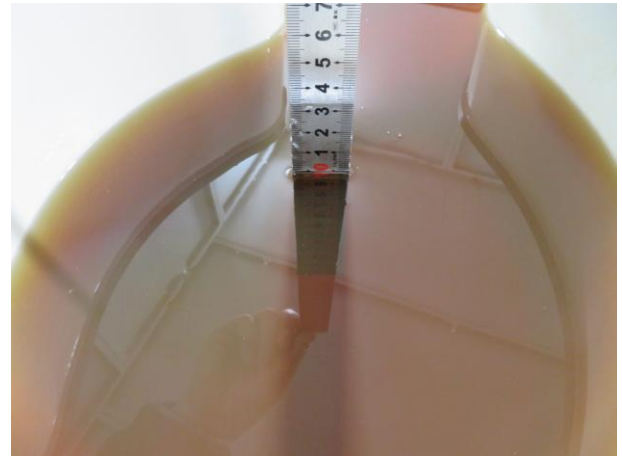
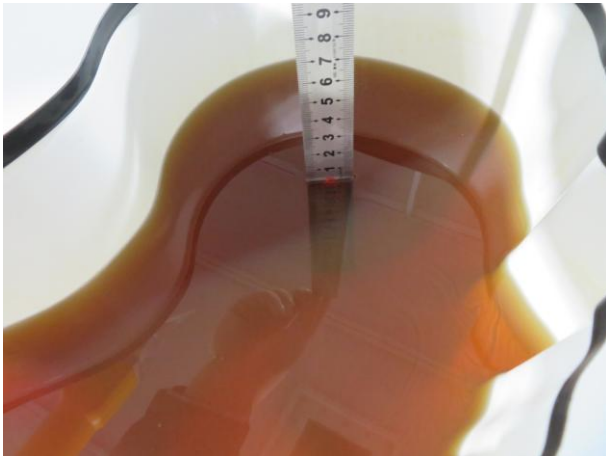
### 7.1. Tissue Check

- Refer to KDB 865664 D01 v01r04, the depth of body tissue-equivalent liquid in a phantom must be  $\geq 15.0$  cm with  $\leq \pm 0.5$  cm variation for SAR measurements  $\leq 3$  GHz and  $\geq 10.0$  cm with  $\leq \pm 0.5$  cm variation for measurements  $> 3$  GHz.

15cm Depth Head Tissue for  $\leq 3$ GHz band

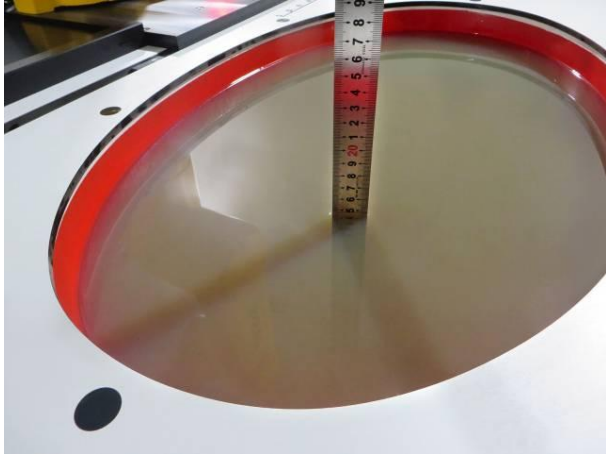


10cm Depth Head Tissue for  $\geq 3$ GHz band

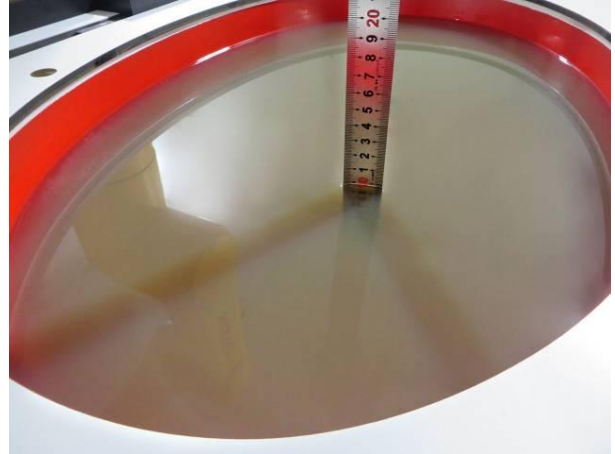




15cm Depth Body Tissue for  $\leq 3\text{GHz}$  band



10cm Depth Body Tissue for  $\geq 3\text{GHz}$  band





■ Tissue Dielectric Parameters for Head and Body Phantoms

Target Frequency (MHz)	Head		Body	
	$\epsilon_r$	$\sigma$ (S/m)	$\epsilon_r$	$\sigma$ (S/m)
150	52.3	0.76	61.9	0.80
300	45.3	0.87	58.2	0.92
450	43.5	0.87	56.7	0.94
835	41.5	0.90	55.2	0.97
900	41.5	0.97	55.0	1.05
915	41.5	0.98	55.0	1.06
1450	40.5	1.20	54.0	1.30
1610	40.3	1.29	53.8	1.40
1800~2000	40.0	1.40	53.3	1.52
2450	39.2	1.80	52.7	1.95
3000	38.5	2.40	52.0	2.73
5200	36.0	4.66	49.0	5.30
5600	35.5	5.07	48.5	5.77
5800	35.3	5.27	48.2	6.00

( $\epsilon_r$  = relative permittivity,  $\sigma$  = conductivity and  $\rho = 1000 \text{ kg/m}^3$ )

Note:

Other head and body tissue parameters that have not been specified in IEEE Std 1528 are derived from tissue dielectric parameters computed from the 4-Cole-Cole equations described above and extrapolated according to the head parameters specified in IEEE Std 1528.

■ Tissue Calibration Result

The dielectric parameters of the liquids were verified prior to the SAR evaluation using DASY6 Dielectric Assessment Kit and keysight PNA-L Network Analyzer N5234B.

Tissue parameter for head								
Freq. (MHz)	Perm.	Cond.	Target Perm.	Target Cond.	Deviation Perm.%	Deviation Cond.%	Tissue Temperature	Test Date
2450	40.02	1.83	39.20	1.80	2.09	1.67	22.5°C	2019.01.29
5250	35.13	4.55	35.93	4.71	-2.23	-3.40	22.5°C	2019.01.29
5600	34.51	4.93	35.53	5.07	-2.87	-2.76	22.5°C	2019.01.29
5750	34.24	5.10	35.36	5.22	-3.17	-2.30	22.5°C	2019.01.30

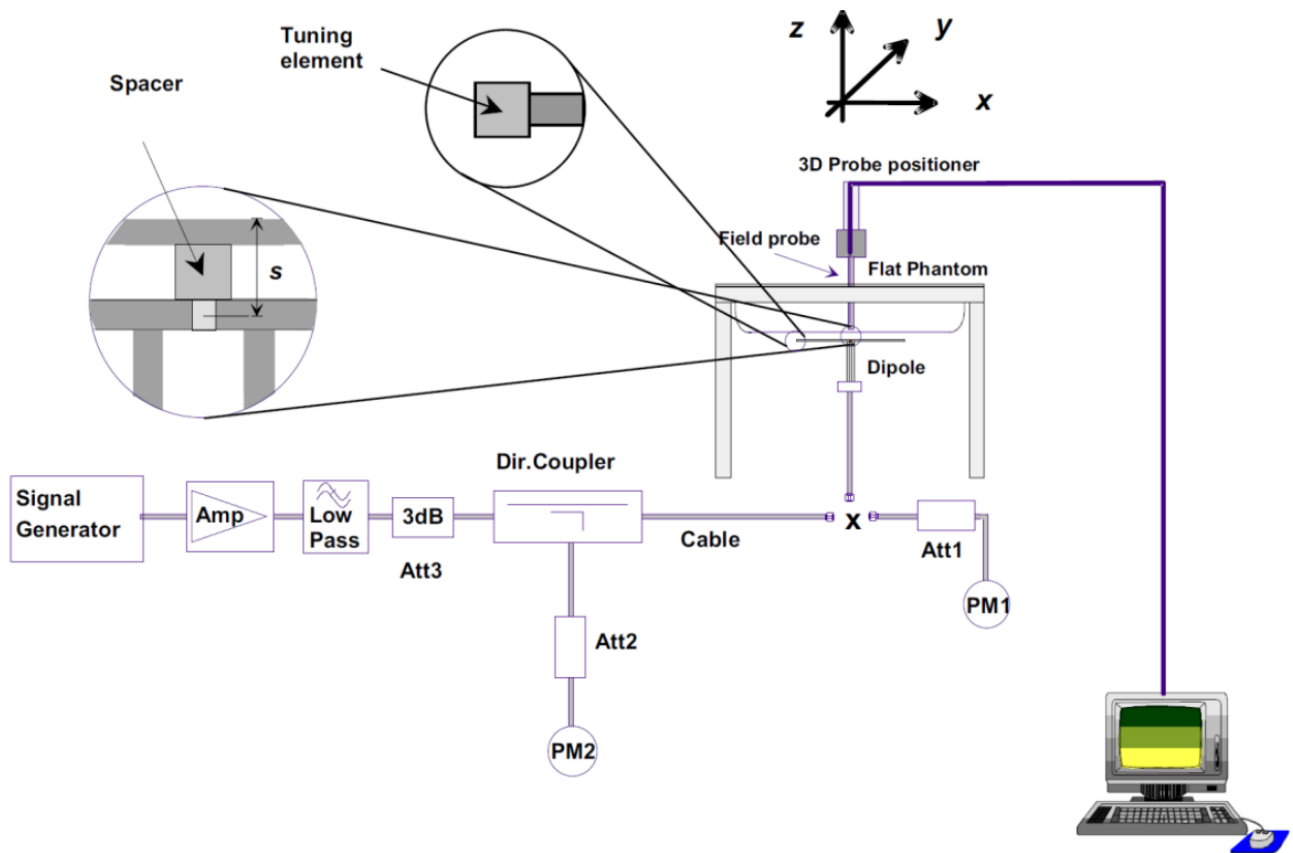
Tissue parameter for body								
Freq. (MHz)	Perm.	Cond.	Target Perm.	Target Cond.	Deviation Perm.%	Deviation Cond.%	Tissue Temperature	Test Date
2450	52.27	2.03	52.70	1.95	-0.82	4.10	22.5°C	2019.01.29
5250	46.90	5.49	48.95	5.36	-4.19	2.43	22.5°C	2019.01.29
5600	46.18	6.00	48.47	5.77	-4.72	3.99	22.5°C	2019.01.29
5750	46.04	6.03	48.27	5.94	-4.62	1.52	22.5°C	2019.01.30

## 7.2. System Check

### ■ Purpose

The purpose of the system check is to verify that the system operates within its specifications at the device test frequencies. System check verifies the measurement repeatability of a SAR system before compliance testing and is not a validation of all system specifications. The latter is not required for testing a device but is mandatory before the system is deployed.

### ■ System Performance Check Setup Diagram



## ■ System Check Procedure

The system check procedure is a complete 1g and 10g peak spatial-average SAR measurement using a source having a previously determined system check target value. The measured 1g and 10g SAR are normalized to the target input power of the specific source and compared to their respective target values. A description of the different measurement tasks to be performed is given below, together with the information that can be deduced from their results:

- a. The Power Reference Measurement and Power Drift Measurement are located at the beginning and end of the batch process. They measure the field drift at one single point in the liquid over the complete procedure. The indicated drift is mainly the variation of the amplifier output power. If it is too high (above  $\pm 0.1$  dB), the system check should be repeated; some amplifiers have very high drift during warm-up. A stable amplifier gives drift results in the DASY6 system below  $\pm 0.02$  dB.
- b. The second step is optional. For probes with integrated optical surface detection sensor this step must be conducted, otherwise the step can be skipped. The Surface Check tests the optical surface detection system of the DASY6 system by repeatedly detecting the surface with the optical and mechanical surface detector and comparing the results. The output gives the detecting heights of both systems, the difference between the two systems and the standard deviation of the detection repeatability. Air bubbles or refraction in the liquid due to separation of the sugar-water mixture gives poor repeatability (above  $\pm 0.1$  mm). In that case it is better to abort the system check and stir the liquid.
- c. The Area Scan measures the SAR above the dipole on a plane parallel to the surface. It is used to locate the approximate location of the peak SAR. The proposed scan uses large grid spacing for faster measurement; due to the symmetric field, the peak detection is reliable. If a finer graphic is desired, the grid spacing can be reduced. Grid spacing and orientation have no influence on the SAR result.
- d. The Zoom Scan measures the field in a volume around the peak SAR value assessed in the previous Area Scan.

If the system check gives reasonable results, the SAR peak, 1 g and 10 g spatial average SAR values normalized to 1 W dipole input power give reference data for comparisons. The next sections analyze the expected uncertainties of these values, as well as additional checks for further information or troubleshooting.

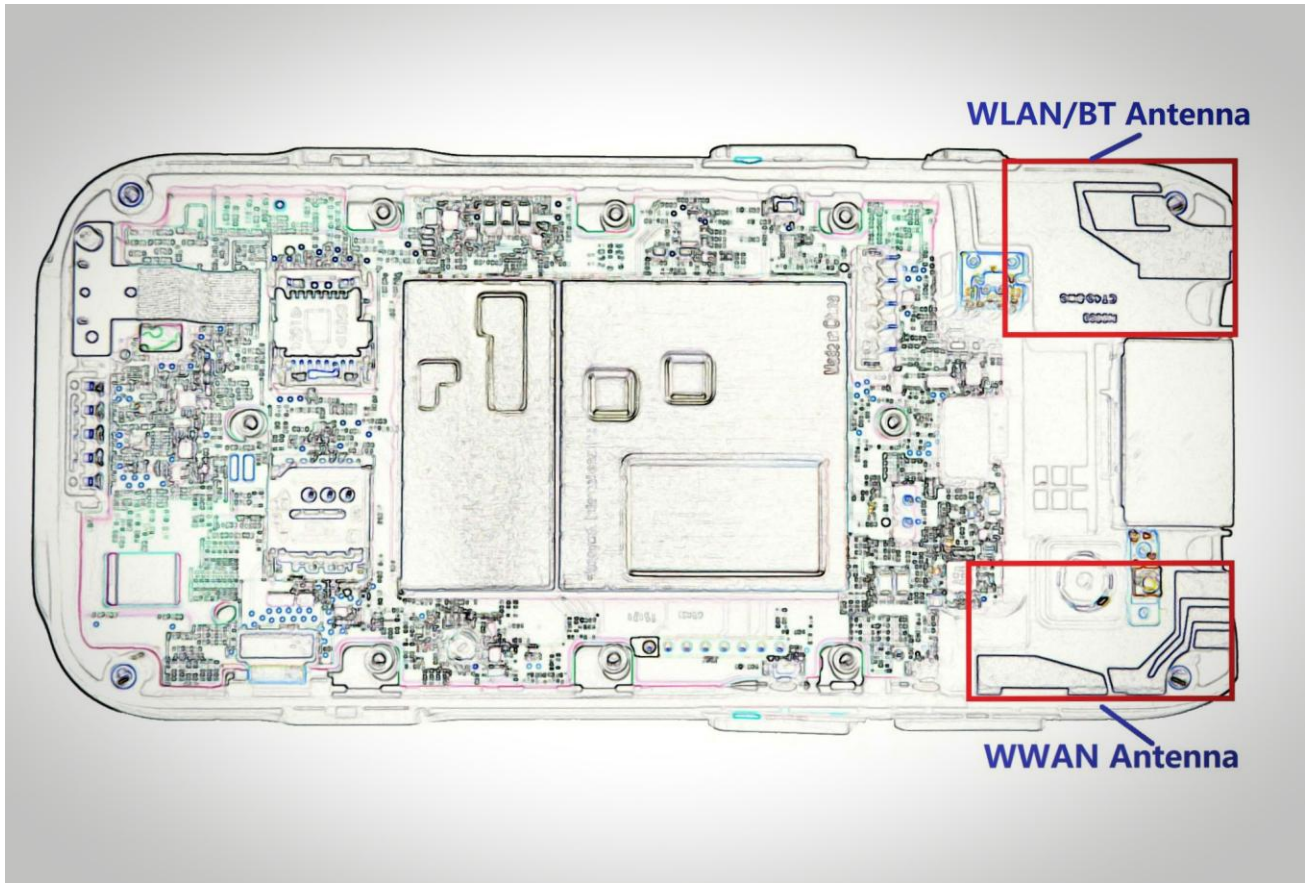
■ Result of System Performance Check

System check for head								
Freq. (MHz)	1g SAR (W/kg)	10g SAR (W/kg)	Target 1g SAR (W/kg)	Target 10g SAR (W/kg)	Deviation 1g SAR %	Deviation 10g SAR %	Tissue Temp.	Test Date
2450	51.60	23.92	52.10	24.40	-0.96	-1.97	22.5°C	2019.01.29
5250	74.60	21.40	82.50	23.60	-9.58	-9.32	22.5°C	2019.01.29
5600	83.00	23.60	85.40	24.40	-2.81	-3.28	22.5°C	2019.01.29
5750	81.30	23.10	80.70	23.00	0.74	0.43	22.5°C	2019.01.30

System check for body								
Freq. (MHz)	1g SAR (W/kg)	10g SAR (W/kg)	Target 1g SAR (W/kg)	Target 10g SAR (W/kg)	Deviation 1g SAR %	Deviation 10g SAR %	Tissue Temp.	Test Date
2450	52.40	24.44	50.40	23.60	3.97	3.56	22.5°C	2019.01.29
5250	76.50	21.70	74.30	20.80	2.96	4.33	22.5°C	2019.01.29
5600	84.60	23.90	78.80	22.00	7.36	8.64	22.5°C	2019.01.29
5750	74.80	20.90	75.00	20.80	-0.27	0.48	22.5°C	2019.01.30

## 8. Analysis and Results

### 8.1. Antenna Location



## 8.2. Conducted Power

### Worst-case conducted power

Band (GHz)	Mode	Channel	Freq. (MHz)	Average Power (dBm)	Tune-up Limit Power (dBm)	Scaling Factor
2.4 (2.4~2.4835)	DH5	0	2402	9.43	10.50	1.28
	802.11b	1	2412	13.48	14.50	1.26
	802.11b	11	2462	13.09	14.50	1.38
5.2 & 5.3 (5.15~5.35)	802.11a	52	5260	12.01	13.00	1.26
	802.11a	64	5320	11.92	13.00	1.28
5.6 (5.47~5.725)	802.11a	116	5580	12.34	13.00	1.16
	802.11a	100	5500	11.76	13.00	1.33
5.8 (5.725~5.850)	802.11a	165	5825	12.38	13.00	1.15

Original test conducted power based on report "BL-EC1840368-701"

■ 2.4GHz Band Wi-Fi

Band (GHz)	Mode	Channel	Freq. (MHz)	Average Power (dBm)	Tune-up Limit Power (dBm)	Scaling Factor
2.4 (2.4~2.4835)	802.11b	1	2412	13.53	14.5	1.25
		6	2437	14.22	14.5	1.07
		11	2462	13.16	14.5	1.36
	802.11g	1	2412	13.06	14.0	1.24
		6	2437	13.15	14.0	1.22
		11	2462	13.13	14.0	1.22
	802.11n(HT20)	1	2412	12.15	13.0	1.22
		6	2437	12.23	13.0	1.19
		11	2462	12.19	13.0	1.21

■ 5GHz Band Wi-Fi

Band (GHz)	Mode	Channel	Freq. (MHz)	Average Power (dBm)	Tune-up Limit Power (dBm)	Scaling Factor
5.2 (5.15~5.25)	802.11a	36	5180	12.11	13.0	1.23
		44	5220	12.17	13.0	1.21
		48	5240	12.09	13.0	1.23
	802.11n(HT20)	36	5180	11.17	12.0	1.21
		44	5220	11.01	12.0	1.26
		48	5240	11.39	12.0	1.15
	802.11n(HT40)	38	5190	11.41	12.0	1.15
		46	5230	11.31	12.0	1.17
	802.11ac(VHT20)	36	5180	11.36	12.0	1.16
		44	5220	11.45	12.0	1.14
		48	5240	11.39	12.0	1.15
	802.11ac(VHT40)	38	5190	11.31	12.0	1.17
		46	5230	11.39	12.0	1.15
	802.11ac(VHT80)	42	5210	10.43	11.5	1.28

<Continue>



5.3 (5.25~5.35)	802.11a	52	5260	12.16	13.0	1.21
		60	5300	11.97	13.0	1.27
		64	5320	11.99	13.0	1.26
	802.11n(HT20)	52	5260	10.93	12.0	1.28
		60	5300	11.32	12.0	1.17
		64	5320	11.31	12.0	1.17
	802.11n(HT40)	54	5270	11.35	12.0	1.16
		62	5310	11.32	12.0	1.17
	802.11ac(VHT20)	52	5260	11.44	12.0	1.14
		60	5300	11.30	12.0	1.17
		64	5320	11.33	12.0	1.17
	802.11ac(VHT40)	54	5270	11.32	12.0	1.17
		62	5310	11.33	12.0	1.17
	802.11ac(VHT80)	58	5290	10.58	11.5	1.24
5.6 (5.47~5.725)	802.11a	100	5500	11.93	13.0	1.28
		116	5580	12.30	13.0	1.17
		140	5700	12.09	13.0	1.23
		144	5720	12.05	13.0	1.24
	802.11n(HT20)	100	5500	11.13	12.0	1.22
		116	5580	11.05	12.0	1.24
		140	5700	11.26	12.0	1.19
		144	5720	11.21	12.0	1.20
	802.11n(HT40)	102	5510	11.02	12.0	1.25
		110	5550	11.14	12.0	1.22
		134	5670	11.42	12.0	1.14
		142	5710	11.33	12.0	1.17
	802.11ac(VHT20)	100	5500	11.18	12.0	1.21
		116	5580	11.08	12.0	1.24
		140	5700	11.32	12.0	1.17
		144	5720	11.27	12.0	1.18
	802.11ac(VHT40)	102	5510	10.98	12.0	1.26
		110	5550	11.17	12.0	1.21
		134	5670	11.13	12.0	1.22
		142	5710	11.25	12.0	1.19
	802.11ac(VHT80)	106	5530	10.56	11.5	1.24
		138	5690	10.65	11.5	1.22

&lt;Continue&gt;

5.8 (5.725~5.850)	802.11a	149	5745	12.18	13.0	1.21
		157	5785	12.23	13.0	1.19
		165	5825	12.32	13.0	1.17
	802.11n(HT20)	149	5745	11.45	12.0	1.14
		157	5785	11.09	12.0	1.23
		165	5825	11.18	12.0	1.21
	802.11n(HT40)	151	5755	11.43	12.0	1.14
		159	5795	11.29	12.0	1.18
	802.11ac(VHT20)	149	5745	11.45	12.0	1.14
		157	5785	11.03	12.0	1.25
		165	5825	11.09	12.0	1.23
	802.11ac(VHT40)	151	5755	11.20	12.0	1.20
		159	5795	11.25	12.0	1.19
	802.11ac(VHT80)	155	5775	10.55	11.5	1.24

## ■ Bluetooth

Mode	Channel	Average Burst Power<dBm>	Max. Tune-up Power<dBm>
DH5	2402	9.45	10.5
	2441	9.27	10.5
	2480	8.56	10.5
2DH5	2402	6.95	8.0
	2441	6.36	8.0
	2480	6.18	8.0
3DH5	2402	7.31	8.0
	2441	6.37	8.0
	2480	6.60	8.0
BLE (1M)	2402	-1.42	0.0
	2440	-2.30	0.0
	2480	-2.35	0.0
BLE (2M)	2402	-1.45	0.0
	2440	-2.36	0.0
	2480	-2.39	0.0

### 8.3. Required Configurations of SAR Test

Worst cases based on original SAR report				
Mode	Channel	Frequency (MHz)	Test Position	Original Reported SAR (W/kg)
Bluetooth DH5	0	2402	Head Left Cheek	0.113
802.11b	1	2412	Head Left Cheek	0.644
802.11a	52	5260	Head Left Cheek	0.240
802.11a	116	5580	Head Left Cheek	0.281
802.11a	165	5825	Head Left Tilt	0.140
Bluetooth DH5	0	2402	Body Front	0.017
802.11b	1	2412	Body Front	0.078
802.11a	52	5260	Body Back	0.086
802.11a	116	5580	Body Back	0.126
802.11a	165	5825	Body Back	0.098
Bluetooth DH5	0	2402	Extremity Front	0.087
802.11b	11	2462	Extremity Front	0.386
802.11a	64	5320	Extremity Back	0.316
802.11a	100	5500	Extremity Back	0.325
802.11a	165	5825	Extremity Left	0.292

## 8.4. SAR Test Results

### ■ Head SAR

2.4GHz Band Bluetooth										
Test Mode	CH.	Freq. (MHz)	Test Pos.	Dist. mm	Cond. Power (dBm)	Max. Tune-up Power (dBm)	Scaling Factor	Mea. SAR-1g (W/kg)	Reported SAR-1g (W/kg)	SAR Plot#
DH5	0	2402	Left Cheek	0	9.43	10.50	1.28	0.07	<b>0.09</b>	1

2.4GHz Band Wi-Fi												
Test Mode	CH.	Freq. (MHz)	Test Pos.	Dist. mm	Cond. Power (dBm)	Max. Tune-up Power (dBm)	Scaling Factor	Mea. SAR-1g (W/kg)	Duty Cycle (%)	Duty Cycle Factor	Reported SAR-1g (W/kg)	SAR Plot#
b	1	2412	Left Cheek	0	13.48	14.50	1.26	0.30	98.96	1.01	<b>0.38</b>	2

5GHz Band Wi-Fi												
Test Mode	CH.	Freq. (MHz)	Test Pos.	Dist. mm	Cond. Power (dBm)	Max. Tune-up Power (dBm)	Scaling Factor	Mea. SAR-1g (W/kg)	Duty Cycle (%)	Duty Cycle Factor	Reported SAR-1g (W/kg)	SAR Plot#
a	52	5260	Left Cheek	0	12.01	13.00	1.26	0.16	95.73	1.04	0.21	
a	116	5580	Left Cheek	0	12.34	13.00	1.16	0.20	95.73	1.04	<b>0.24</b>	3
a	165	5825	Left Tilt	0	12.38	13.00	1.15	0.20	95.73	1.04	0.24	

**■ Body-worn Accessory**

2.4GHz Band Bluetooth										
Test Mode	CH.	Freq. (MHz)	Test Pos.	Dist. mm	Cond. Power (dBm)	Max. Tune-up Power (dBm)	Scaling Factor	Mea. SAR-1g (W/kg)	Reported SAR-1g (W/kg)	SAR Plot#
DH5	0	2402	Front	10	9.43	10.50	1.28	0.01	0.01	
DH5	0	2402	Front with earphone	10	9.43	10.50	1.28	0.01	<b>0.01</b>	4

2.4GHz Band Wi-Fi												
Test Mode	CH.	Freq. (MHz)	Test Pos.	Dist. mm	Cond. Power (dBm)	Max. Tune-up Power (dBm)	Scaling Factor	Mea. SAR-1g (W/kg)	Duty Cycle (%)	Duty Cycle Factor	Reported SAR-1g (W/kg)	SAR Plot#
b	1	2412	Front	10	13.48	14.50	1.26	0.04	98.96	1.01	<b>0.05</b>	5
b	1	2412	Front with earphone	10	13.48	14.50	1.26	0.04	98.96	1.01	0.05	

5GHz Band Wi-Fi												
Test Mode	CH.	Freq. (MHz)	Test Pos.	Dist. mm	Cond. Power (dBm)	Max. Tune-up Power (dBm)	Scaling Factor	Mea. SAR-1g (W/kg)	Duty Cycle (%)	Duty Cycle Factor	Reported SAR-1g (W/kg)	SAR Plot#
a	52	5260	Back	10	12.01	13.00	1.26	0.09	95.73	1.04	0.12	
a	52	5260	Back with earphone	10	12.01	13.00	1.26	0.08	95.73	1.04	0.11	
a	116	5580	Back	10	12.34	13.00	1.16	0.13	95.73	1.04	<b>0.16</b>	6
a	116	5580	Back with earphone	10	12.34	13.00	1.16	0.13	95.73	1.04	0.16	
a	165	5825	Back	10	12.38	13.00	1.15	0.08	95.73	1.04	0.10	
a	165	5825	Back with earphone	10	12.38	13.00	1.15	0.09	95.73	1.04	0.11	

**Extremity SAR**

2.4GHz Band Bluetooth										
Test Mode	CH.	Freq. (MHz)	Test Pos.	Dist. mm	Cond. Power (dBm)	Max. Tune-up Power (dBm)	Scaling Factor	Mea. SAR-1g (W/kg)	Reported SAR-1g (W/kg)	SAR Plot#
DH5	0	2402	Front	0	9.45	10.50	1.27	0.05	0.06	
DH5	0	2402	Front with earphone	0	9.45	10.50	1.27	0.06	<b>0.08</b>	7

2.4GHz Band Wi-Fi												
Test Mode	CH.	Freq. (MHz)	Test Pos.	Dist. mm	Cond. Power (dBm)	Max. Tune-up Power (dBm)	Scaling Factor	Mea. SAR-1g (W/kg)	Duty Cycle (%)	Duty Cycle Factor	Reported SAR-1g (W/kg)	SAR Plot#
b	11	2462	Front	0	13.09	14.50	1.38	0.19	98.96	1.01	0.27	
b	11	2462	Front with earphone	0	13.09	14.50	1.38	0.19	98.96	1.01	<b>0.27</b>	8

5GHz Band Wi-Fi												
Test Mode	CH.	Freq. (MHz)	Test Pos.	Dist. mm	Cond. Power (dBm)	Max. Tune-up Power (dBm)	Scaling Factor	Mea. SAR-1g (W/kg)	Duty Cycle (%)	Duty Cycle Factor	Reported SAR-1g (W/kg)	SAR Plot#
a	64	5320	Back	0	11.92	13.00	1.28	0.20	95.73	1.04	0.27	
a	64	5320	Back with earphone	0	11.92	13.00	1.28	0.21	95.73	1.04	0.28	
a	100	5500	Back	0	11.76	13.00	1.33	0.22	95.73	1.04	0.30	
a	100	5500	Back with earphone	0	11.76	13.00	1.33	0.21	95.73	1.04	0.29	
a	165	5825	Back	0	12.38	13.00	1.15	0.30	95.73	1.04	<b>0.36</b>	9
a	165	5825	Left with earphone	0	12.38	13.00	1.15	0.30	95.73	1.04	0.36	

### 8.5. SAR Results Deviation

Head						
Mode	Channel	Frequency (MHz)	Test Position	Current SAR (W/kg)	Original Reported SAR (W/kg)	Deviation (W/kg)
BT DH5	0	2402	Left Cheek	0.09	0.113	-0.02
802.11b	1	2412	Left Cheek	0.38	0.644	-0.26
802.11a	52	5260	Left Cheek	0.20	0.240	-0.04
802.11a	116	5580	Left Cheek	0.25	0.281	-0.03
802.11a	165	5825	Left Tilt	0.24	0.140	0.10

Body-worn Accessory						
Mode	Channel	Frequency (MHz)	Test Position	Current SAR (W/kg)	Original Reported SAR (W/kg)	Deviation (W/kg)
BT DH5	0	2402	Front	0.01	0.017	-0.01
BT DH5	0	2402	Front with earphone	0.01	0.017	-0.01
802.11b	1	2412	Front	0.05	0.078	-0.03
802.11b	1	2412	Front with earphone	0.05	0.078	-0.03
802.11a	52	5260	Back	0.11	0.086	0.02
802.11a	52	5260	Back with earphone	0.10	0.086	0.01
802.11a	116	5580	Back	0.16	0.126	0.03
802.11a	116	5580	Back with earphone	0.16	0.126	0.03
802.11a	165	5825	Back	0.10	0.098	0.00
802.11a	165	5825	Back with earphone	0.11	0.098	0.01

Extremity						
Mode	Channel	Frequency (MHz)	Test Position	Current SAR (W/kg)	Original Reported SAR (W/kg)	Deviation (W/kg)
BT DH5	0	2402	Front	0.06	0.087	-0.03
BT DH5	0	2402	Front with earphone	0.08	0.087	-0.01
802.11b	11	2462	Front	0.26	0.386	-0.13
802.11b	11	2462	Front with earphone	0.26	0.386	-0.13
802.11a	64	5320	Back	0.26	0.316	-0.06
802.11a	64	5320	Back with earphone	0.28	0.316	-0.04
802.11a	100	5500	Back	0.29	0.325	-0.04
802.11a	100	5500	Back with earphone	0.28	0.325	-0.05
802.11a	165	5825	Left	0.37	0.292	0.08
802.11a	165	5825	Left with earphone	0.37	0.292	0.08



## 9. Simultaneous Transmission Analysis

N/A

## 10. Test Equipment Used

SAR– SR3					
Instrument	Manufacturer	Type No.	Asset No.	Cali. Interval	Cali. Due Date
Stäubli Robot TX60L	Stäubli	TX60L	MRTSUE06412	only once	only once
Robot Controller	Stäubli	CS8C	MRTSUE06412	only once	only once
Dipole Validation Kits	Speag	D2450V2	MRTSUE06430	3 year	2021/05/08
Dipole Validation Kits	Speag	D5GHzV2	MRTSUE06434	3 year	2021/05/22
ELI Phantom Shell	Speag	V8	MRTSUE06420	N/A	N/A
DAE4	Speag	SD 000 D04 BN	MRTSUE06414	1 year	2019/05/21
E-Field Probe	Speag	EX3DV4	MRTSUE06438	1 year	2019/05/17
DAK	Speag	DAK-3.5	MRTSUE06435	1 year	2019/05/16
Network Analyzer	Keysight	N5234B	MRTSUE06454	1 year	2019/07/19
Directional Coupler	Agilent	778D	MRTSUE06083	1 year	2019/03/27
Directional Coupler	Agilent	87301D OPT 292	MRTSUE06082	1 year	2019/03/27
Signal Generator	Keysight	N5183B	MRTSUE06197	1 year	2019/05/02
Power Meter	Agilent	E4418B	MRTSUE06204	1 year	2019/06/15
Power Sensor	Agilent	E9301H	MRTSUE06205	1 year	2019/06/15
Thermohygrometer	Testo	622	MRTSUE06361	1 year	2019/05/28

Software	Version	Function
DASY NEO	52.10.1.1476	SAR Test Software

## 11. Measurement Uncertainty

DASY5 Uncertainty Budget, according to IEEE 1528 and IEC 62209-1 (Hand-Held: 0.3 - 3 GHz range)								
Error Description	Uncert. value	Prob. Dist.	Div.	(ci) 1g	(ci) 10g	Std. Unc. (1g)	Std. Unc. (10g)	(vi) v <sub>eff</sub>
<b>Measurement System</b>								
Probe Calibration	±6.0 %	N	1	1	1	±6.0 %	±6.0 %	∞
Axial Isotropy	±4.7 %	R	$\sqrt{3}$	0.7	0.7	±1.9 %	±1.9 %	∞
Hemispherical Isotropy	±9.6 %	R	$\sqrt{3}$	0.7	0.7	±3.9 %	±3.9 %	∞
Boundary Effects	±1.0 %	R	$\sqrt{3}$	1	1	±0.6 %	±0.6 %	∞
Linearity	±4.7 %	R	$\sqrt{3}$	1	1	±2.7 %	±2.7 %	∞
System Detection Limits	±1.0 %	R	$\sqrt{3}$	1	1	±0.6 %	±0.6 %	∞
Modulation Response	±2.4 %	R	$\sqrt{3}$	1	1	±1.4 %	±1.4 %	∞
Readout Electronics	±0.3 %	N	1	1	1	±0.3 %	±0.3 %	∞
Response Time	±0.8 %	R	$\sqrt{3}$	1	1	±0.5 %	±0.5 %	∞
Integration Time	±2.6 %	R	$\sqrt{3}$	1	1	±1.5 %	±1.5 %	∞
RF Ambient Noise	±3.0 %	R	$\sqrt{3}$	1	1	±1.7 %	±1.7 %	∞
RF Ambient Reflections	±3.0 %	R	$\sqrt{3}$	1	1	±1.7 %	±1.7 %	∞
Probe Positioner	±0.02 %	R	$\sqrt{3}$	1	1	±0.0 %	±0.0 %	∞
Probe Positioning	±0.4 %	R	$\sqrt{3}$	1	1	±0.2 %	±0.2 %	∞
Max. SAR Eval.	±2.0 %	R	$\sqrt{3}$	1	1	±1.2 %	±1.2 %	∞
<b>Test Sample Related</b>								
Device Positioning	±2.9%	N	1	1	1	±2.9 %	±2.9 %	145
Device Holder	±3.6%	N	1	1	1	±3.6 %	±3.6 %	5
Power Drift	±5.0%	R	$\sqrt{3}$	1	1	±2.9 %	±2.9 %	∞
Power Scaling	±0%	R	$\sqrt{3}$	1	1	±0.0 %	±0.0 %	∞
<b>Phantom and Setup</b>								
Phantom Uncertainty	±6.1%	R	$\sqrt{3}$	1	1	±3.5 %	±3.5 %	∞
SAR correction	±1.9%	N	1	1	0.84	±1.9 %	±1.6 %	∞
Liquid Cond. (mea.) <sup>DAK</sup>	±2.5%	N	1	0.78	0.71	±2.0 %	±1.8 %	∞
Liquid Perm. (mea.) <sup>DAK</sup>	±2.5%	N	1	0.23	0.26	±0.6 %	±0.7 %	∞
Temp. unc. – Conductivity <sup>BB</sup>	±3.4%	R	$\sqrt{3}$	0.78	0.71	±1.5 %	±1.4 %	∞
Temp. unc. – Permittivity <sup>BB</sup>	±0.4%	R	$\sqrt{3}$	0.23	0.26	±0.1 %	±0.1 %	∞
<b>Combined Std. Uncertainty</b>						±11.3%	±11.2%	459
<b>Expanded STD Uncertainty</b>						<b>±22.6%</b>	<b>±22.4%</b>	

<b>DASY5 Uncertainty Budget, according to IEEE 1528 and IEC 62209-1 (Hand-Held: 3 - 6 GHz range)</b>								
Error Description	Uncert. value	Prob. Dist.	Div.	(ci) 1g	(ci) 10g	Std. Unc. (1g)	Std. Unc. (10g)	(vi) v <sub>eff</sub>
<b>Measurement System</b>								
Probe Calibration	±6.55 %	N	1	1	1	±6.55 %	±6.55 %	∞
Axial Isotropy	±4.7 %	R	$\sqrt{3}$	0.7	0.7	±1.9 %	±1.9 %	∞
Hemispherical Isotropy	±9.6 %	R	$\sqrt{3}$	0.7	0.7	±3.9 %	±3.9 %	∞
Boundary Effects	±2.0 %	R	$\sqrt{3}$	1	1	±1.2 %	±1.2 %	∞
Linearity	±4.7 %	R	$\sqrt{3}$	1	1	±2.7 %	±2.7 %	∞
System Detection Limits	±1.0 %	R	$\sqrt{3}$	1	1	±0.6 %	±0.6 %	∞
Modulation Response	±2.4 %	R	$\sqrt{3}$	1	1	±1.4 %	±1.4 %	∞
Readout Electronics	±0.3 %	N	1	1	1	±0.3 %	±0.3 %	∞
Response Time	±0.8 %	R	$\sqrt{3}$	1	1	±0.5 %	±0.5 %	∞
Integration Time	±2.6 %	R	$\sqrt{3}$	1	1	±1.5 %	±1.5 %	∞
RF Ambient Noise	±3.0 %	R	$\sqrt{3}$	1	1	±1.7 %	±1.7 %	∞
RF Ambient Reflections	±3.0 %	R	$\sqrt{3}$	1	1	±1.7 %	±1.7 %	∞
Probe Positioner	±0.04 %	R	$\sqrt{3}$	1	1	±0.0 %	±0.0 %	∞
Probe Positioning	±0.8 %	R	$\sqrt{3}$	1	1	±0.5 %	±0.5 %	∞
Max. SAR Eval.	±4.0 %	R	$\sqrt{3}$	1	1	±2.3 %	±2.3 %	∞
<b>Test Sample Related</b>								
Device Positioning	±2.9%	N	1	1	1	±2.9 %	±2.9 %	145
Device Holder	±3.6%	N	1	1	1	±3.6 %	±3.6 %	5
Power Drift	±5.0%	R	$\sqrt{3}$	1	1	±2.9 %	±2.9 %	∞
Power Scaling	±0%	R	$\sqrt{3}$	1	1	±0.0 %	±0.0 %	∞
<b>Phantom and Setup</b>								
Phantom Uncertainty	±6.6%	R	$\sqrt{3}$	1	1	±3.8 %	±3.8 %	∞
SAR correction	±1.9%	N	1	1	0.84	±1.9 %	±1.6 %	∞
Liquid Cond. (mea.) <sup>DAK</sup>	±2.5%	N	1	0.78	0.71	±2.0 %	±1.8 %	∞
Liquid Perm. (mea.) <sup>DAK</sup>	±2.5%	N	1	0.23	0.26	±0.6 %	±0.7 %	∞
Temp. unc. – Conductivity <sup>BB</sup>	±3.4%	R	$\sqrt{3}$	0.78	0.71	±1.5 %	±1.4 %	∞
Temp. unc. – Permittivity <sup>BB</sup>	±0.4%	R	$\sqrt{3}$	0.23	0.26	±0.1 %	±0.1 %	∞
<b>Combined Std. Uncertainty</b>						±11.9%	±11.8%	569
<b>Expanded STD Uncertainty</b>						<b>±23.8%</b>	<b>±23.6%</b>	

## Annex A - System Check Result

Test Date: 1/29/2019

### SystemPerformanceCheck-SAM1-D2450HSL

**DUT: Dipole 2450 MHz D2450V2; Type: D2450V2**

Communication System: CW; Frequency: 2450 MHz; Duty Cycle: 1:1

Medium parameters used:  $f = 2450$  MHz;  $\sigma = 1.83$  S/m;  $\epsilon_r = 40.02$ ;  $\rho = 1000$  kg/m<sup>3</sup>

Phantom section: Flat Section

DASY5 Configuration:

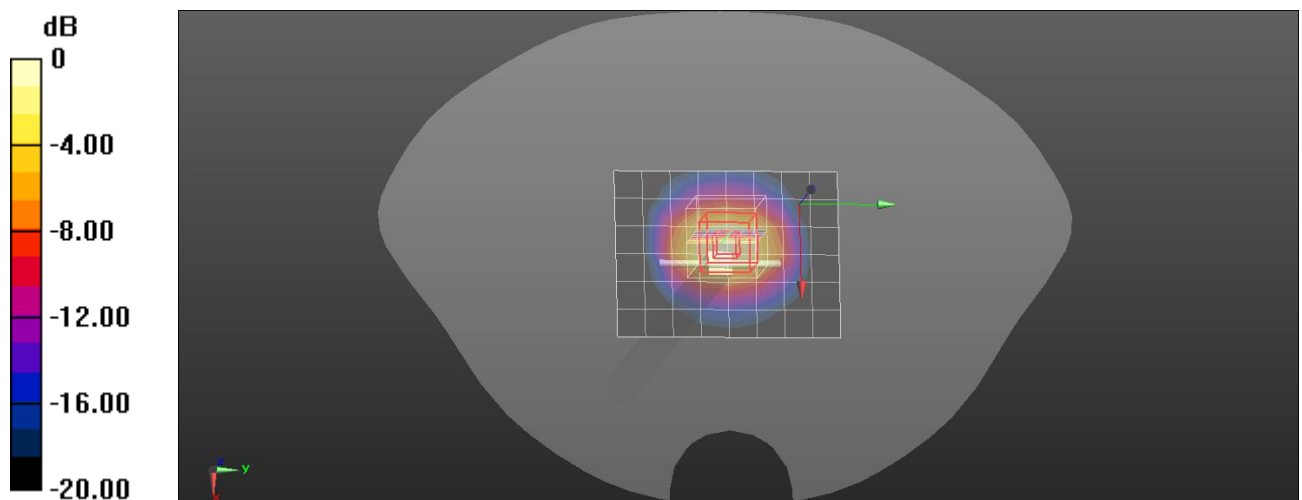
- Probe: EX3DV4 - SN7504; ConvF(7.89, 7.89, 7.89); Calibrated: 5/18/2018
- Sensor-Surface: 4mm (Mechanical Surface Detection)
- Electronics: DAE4 Sn1552; Calibrated: 5/22/2018
- Phantom: SAM1; Type: QD000P40CD; Serial: TP:1954
- Measurement SW: DASY52, Version 52.10; SEMCAD X Version 14.6.11 (7437)

**configuration/d=10mm, Pin=250mW, dist=4mm (EX-Probe)/Area Scan (7x9x1):** Measurement grid: dx=12mm, dy=12mm; Maximum value of SAR (measured) = 13.4 W/kg

**configuration/d=10mm, Pin=250mW, dist=4mm (EX-Probe)/Zoom Scan (7x7x7)/Cube 0:**

Measurement grid: dx=5mm, dy=5mm, dz=5mm; Reference Value = 98.16 V/m; Power Drift = 0.10 dB  
Peak SAR (extrapolated) = 27.1 W/kg

**SAR(1 g) = 12.9 W/kg; SAR(10 g) = 5.98 W/kg** Maximum value of SAR (measured) = 14.5 W/kg



0 dB = 14.5 W/kg = 11.61 dBW/kg

Test Date: 1/29/2019

**SystemPerformanceCheck-SAM1-D5250HSL**

**DUT: Dipole D5GHzV2; Type: D5GHzV2**

Communication System: CW; Frequency: 5250 MHz; Duty Cycle: 1:1

Medium parameters used:  $f = 5250 \text{ MHz}$ ;  $\sigma = 4.55 \text{ S/m}$ ;  $\epsilon_r = 35.13$ ;  $\rho = 1000 \text{ kg/m}^3$

Phantom section: Flat Section

DASY5 Configuration:

- Probe: EX3DV4 - SN7504; ConvF(5.67, 5.67, 5.67); Calibrated: 5/18/2018
- Sensor-Surface: 2mm (Mechanical Surface Detection)
- Electronics: DAE4 Sn1552; Calibrated: 5/22/2018
- Phantom: SAM1; Type: QD000P40CD; Serial: TP:1954
- Measurement SW: DASY52, Version 52.10; SEMCAD X Version 14.6.11 (7437)

**Configuration/d=10mm, Pin=100 mW, dist=2.0mm (EX-Probe)/Area Scan (7x9x1):** Measurement grid:

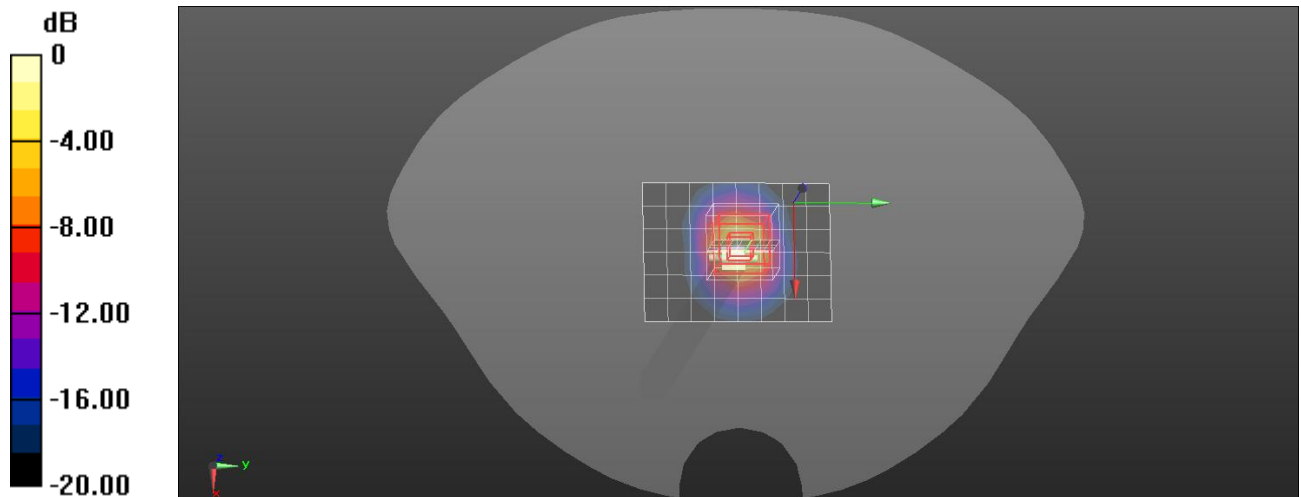
$dx=10\text{mm}$ ,  $dy=10\text{mm}$ ; Maximum value of SAR (measured) = 14.9 W/kg

**Configuration/d=10mm, Pin=100 mW, dist=2.0mm (EX-Probe)/Zoom Scan (8x8x8) (8x8x6)/Cube 0:**

Measurement grid:  $dx=4\text{mm}$ ,  $dy=4\text{mm}$ ,  $dz=2\text{mm}$ ; Reference Value = 61.17 V/m; Power Drift = -0.10 dB

Peak SAR (extrapolated) = 30.8 W/kg

**SAR(1 g) = 7.46 W/kg; SAR(10 g) = 2.14 W/kg** Maximum value of SAR (measured) = 14.1 W/kg



0 dB = 14.1 W/kg = 11.49 dBW/kg

Test Date: 1/29/2019

**SystemPerformanceCheck-SAM1-D5600HSL**

**DUT: Dipole D5GHzV2; Type: D5GHzV2**

Communication System: CW; Frequency: 5600 MHz; Duty Cycle: 1:1

Medium parameters used:  $f = 5600$  MHz;  $\sigma = 4.93$  S/m;  $\epsilon_r = 34.51$ ;  $\rho = 1000$  kg/m<sup>3</sup>

Phantom section: Flat Section

DASY5 Configuration:

- Probe: EX3DV4 - SN7504; ConvF(4.97, 4.97, 4.97); Calibrated: 5/18/2018
- Sensor-Surface: 2mm (Mechanical Surface Detection)
- Electronics: DAE4 Sn1552; Calibrated: 5/22/2018
- Phantom: SAM1; Type: QD000P40CD; Serial: TP:1954
- Measurement SW: DASY52, Version 52.10; SEMCAD X Version 14.6.11 (7437)

**Configuration/d=10mm, Pin=100 mW, dist=2.0mm (EX-Probe)/Area Scan (7x9x1):** Measurement grid:

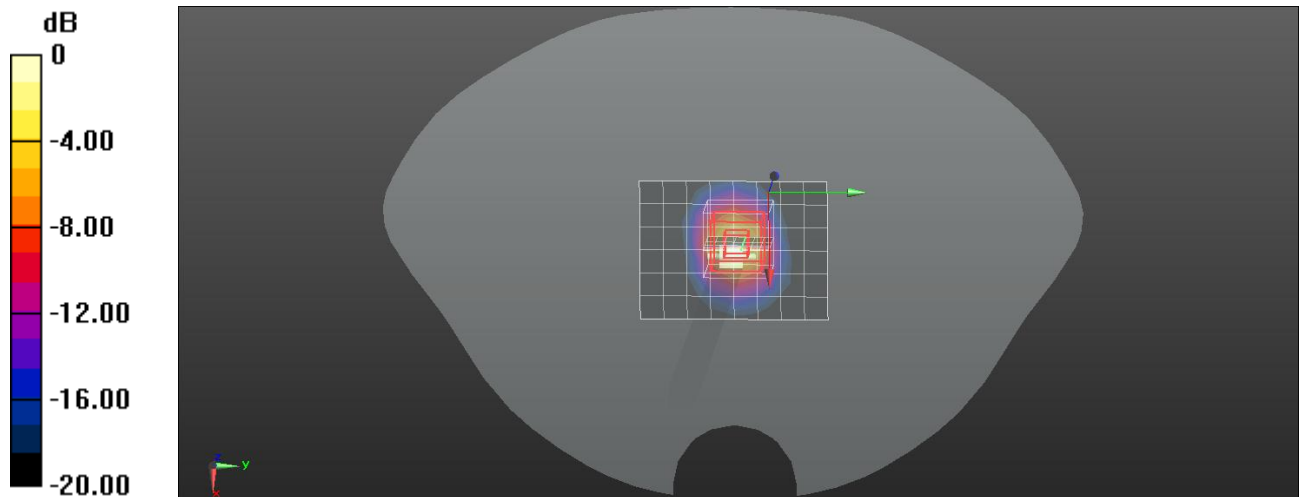
dx=10mm, dy=10mm; Maximum value of SAR (measured) = 16.3 W/kg

**Configuration/d=10mm, Pin=100 mW, dist=2.0mm (EX-Probe)/Zoom Scan (8x8x8) (8x8x6)/Cube 0:**

Measurement grid: dx=4mm, dy=4mm, dz=2mm; Reference Value = 61.78 V/m; Power Drift = 0.03 dB

Peak SAR (extrapolated) = 36.5 W/kg

**SAR(1 g) = 8.3 W/kg; SAR(10 g) = 2.36 W/kg** Maximum value of SAR (measured) = 15.9 W/kg



0 dB = 15.9 W/kg = 12.01 dBW/kg

Test Date: 1/30/2019

**SystemPerformanceCheck-SAM1-D5750HSL**

**DUT: Dipole D5GHzV2; Type: D5GHzV2**

Communication System: CW; Frequency: 5750 MHz; Duty Cycle: 1:1

Medium parameters used:  $f = 5750 \text{ MHz}$ ;  $\sigma = 5.1 \text{ S/m}$ ;  $\epsilon_r = 34.24$ ;  $\rho = 1000 \text{ kg/m}^3$

Phantom section: Flat Section

DASY5 Configuration:

- Probe: EX3DV4 - SN7504; ConvF(5.34, 5.34, 5.34); Calibrated: 5/18/2018
- Sensor-Surface: 2mm (Mechanical Surface Detection)
- Electronics: DAE4 Sn1552; Calibrated: 5/22/2018
- Phantom: SAM1; Type: QD000P40CD; Serial: TP:1954
- Measurement SW: DASY52, Version 52.10; SEMCAD X Version 14.6.11 (7437)

**Configuration/d=10mm, Pin=100 mW, dist=2.0mm (EX-Probe)/Area Scan (7x9x1):** Measurement grid:

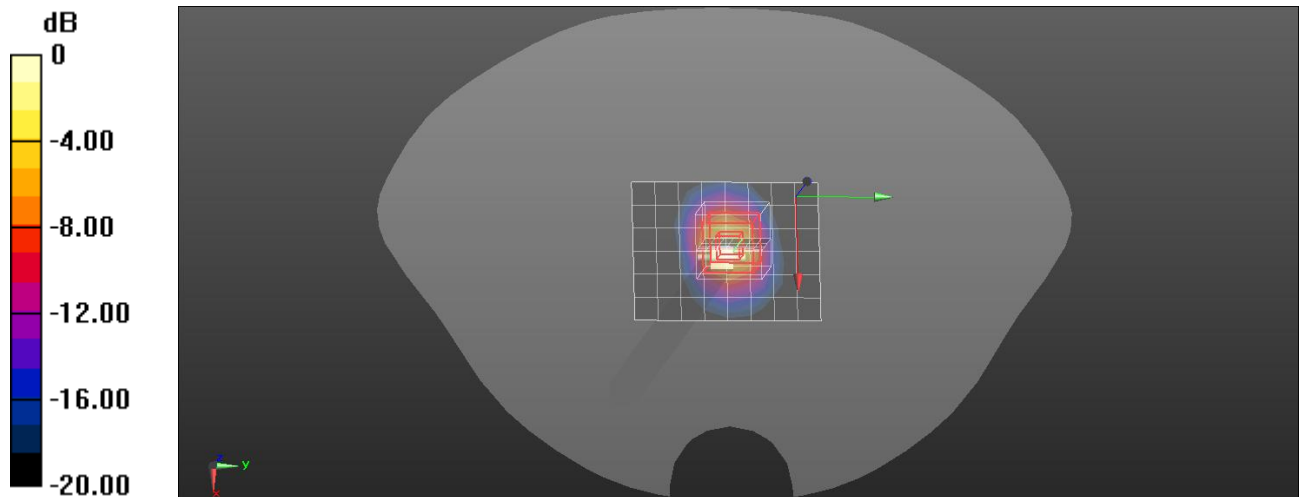
$dx=10\text{mm}$ ,  $dy=10\text{mm}$ ; Maximum value of SAR (measured) = 16.1 W/kg

**Configuration/d=10mm, Pin=100 mW, dist=2.0mm (EX-Probe)/Zoom Scan (8x8x8) (8x8x6)/Cube 0:**

Measurement grid:  $dx=4\text{mm}$ ,  $dy=4\text{mm}$ ,  $dz=2\text{mm}$ ; Reference Value = 60.36 V/m; Power Drift = 0.04 dB

Peak SAR (extrapolated) = 35.8 W/kg

**SAR(1 g) = 8.13 W/kg; SAR(10 g) = 2.31 W/kg** Maximum value of SAR (measured) = 15.6 W/kg



0 dB = 15.6 W/kg = 11.93 dBW/kg



Test Date: 1/29/2019

**SystemPerformanceCheck-SAM2-D2450MSL**

**DUT: Dipole 2450 MHz D2450V2; Type: D2450V2**

Communication System: CW; Frequency: 2450 MHz; Duty Cycle: 1:1

Medium parameters used:  $f = 2450 \text{ MHz}$ ;  $\sigma = 2.03 \text{ S/m}$ ;  $\epsilon_r = 52.27$ ;  $\rho = 1000 \text{ kg/m}^3$

Phantom section: Flat Section

DASY5 Configuration:

- Probe: EX3DV4 - SN7504; ConvF(7.74, 7.74, 7.74); Calibrated: 5/18/2018
- Sensor-Surface: 4mm (Mechanical Surface Detection)
- Electronics: DAE4 Sn1552; Calibrated: 5/22/2018
- Phantom: SAM2; Type: QD OVA 004 Ax; Serial: 2089
- Measurement SW: DASY52, Version 52.10; SEMCAD X Version 14.6.11 (7437)

**configuration/d=10mm, Pin=250mW, dist=4mm (EX-Probe)/Area Scan (7x9x1):** Measurement grid:

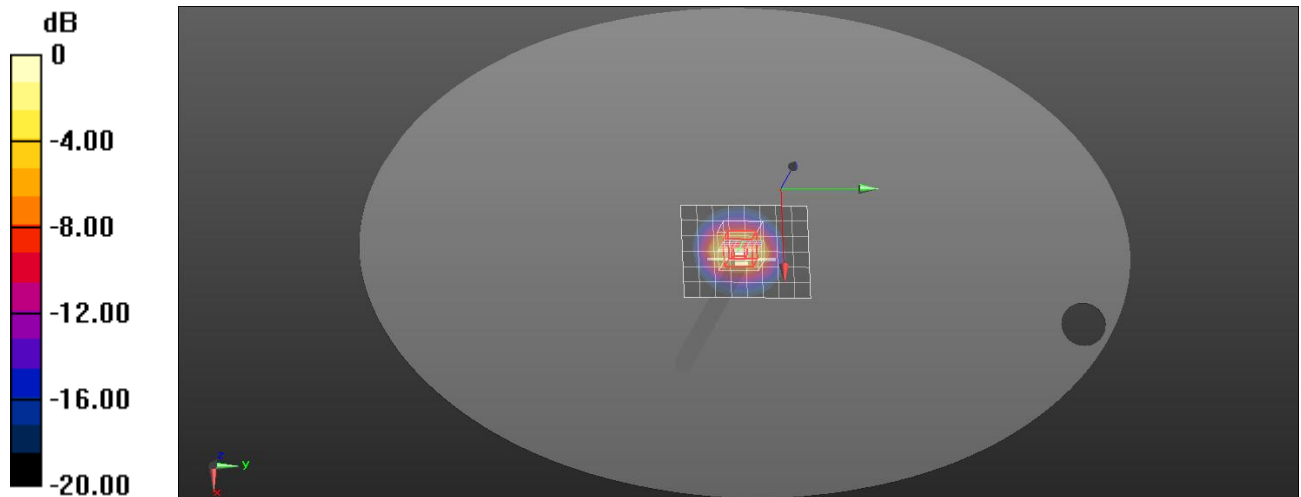
$dx=12\text{mm}$ ,  $dy=12\text{mm}$ ; Maximum value of SAR (measured) = 14.1 W/kg

**configuration/d=10mm, Pin=250mW, dist=4mm (EX-Probe)/Zoom Scan (7x7x7)/Cube 0:**

Measurement grid:  $dx=5\text{mm}$ ,  $dy=5\text{mm}$ ,  $dz=5\text{mm}$ ; Reference Value = 97.88 V/m; Power Drift = -0.05 dB

Peak SAR (extrapolated) = 26.8 W/kg

**SAR(1 g) = 13.1 W/kg; SAR(10 g) = 6.11 W/kg** Maximum value of SAR (measured) = 15.1 W/kg



0 dB = 15.1 W/kg = 11.79 dBW/kg

Test Date: 1/29/2019

**SystemPerformanceCheck-SAM2-D5250MSL**

**DUT: Dipole D5GHzV2; Type: D5GHzV2**

Communication System: CW; Frequency: 5250 MHz; Duty Cycle: 1:1

Medium parameters used:  $f = 5250 \text{ MHz}$ ;  $\sigma = 5.49 \text{ S/m}$ ;  $\epsilon_r = 46.9$ ;  $\rho = 1000 \text{ kg/m}^3$

Phantom section: Flat Section

DASY5 Configuration:

- Probe: EX3DV4 - SN7504; ConvF(4.87, 4.87, 4.87); Calibrated: 5/18/2018
- Sensor-Surface: 2mm (Mechanical Surface Detection)
- Electronics: DAE4 Sn1552; Calibrated: 5/22/2018
- Phantom: SAM2; Type: QD OVA 004 Ax; Serial: 2089
- Measurement SW: DASY52, Version 52.10; SEMCAD X Version 14.6.11 (7437)

**Configuration/d=10mm, Pin=100 mW, dist=2.0mm (EX-Probe)/Area Scan (7x9x1):** Measurement grid:

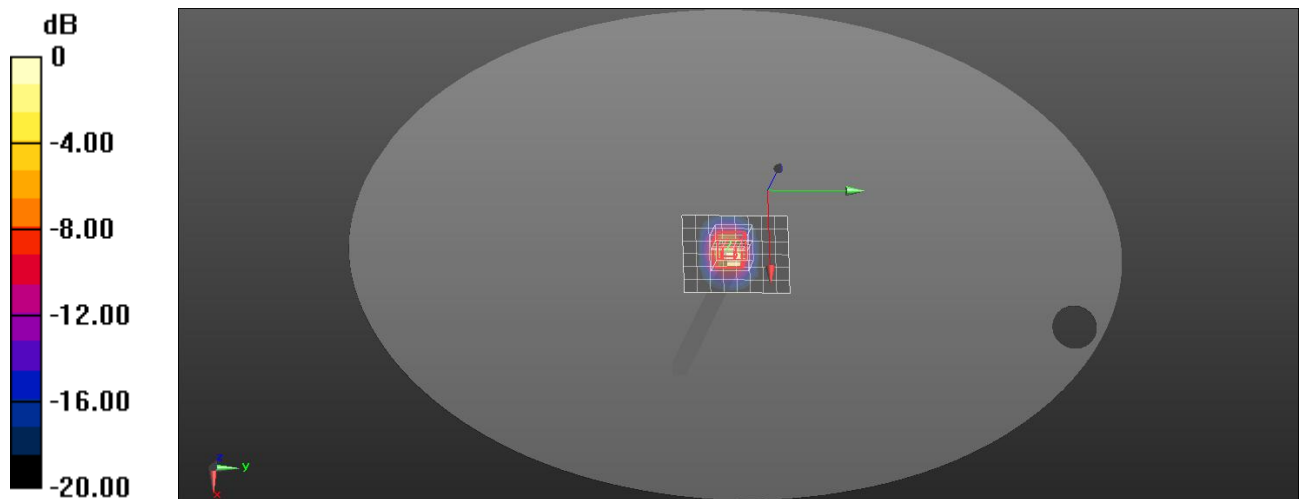
$dx=10\text{mm}$ ,  $dy=10\text{mm}$ ; Maximum value of SAR (measured) = 12.4 W/kg

**Configuration/d=10mm, Pin=100 mW, dist=2.0mm (EX-Probe)/Zoom Scan (8x8x8) (8x8x6)/Cube 0:**

Measurement grid:  $dx=4\text{mm}$ ,  $dy=4\text{mm}$ ,  $dz=2\text{mm}$ ; Reference Value = 48.89 V/m; Power Drift = -0.07 dB

Peak SAR (extrapolated) = 29.9 W/kg

**SAR(1 g) = 7.65 W/kg; SAR(10 g) = 2.17 W/kg** Maximum value of SAR (measured) = 15.2 W/kg



0 dB = 15.2 W/kg = 11.82 dBW/kg

Test Date: 1/29/2019

**SystemPerformanceCheck-SAM2-D5600MSL**

**DUT: Dipole D5GHzV2; Type: D5GHzV2**

Communication System: CW; Frequency: 5600 MHz; Duty Cycle: 1:1

Medium parameters used:  $f = 5600$  MHz;  $\sigma = 6$  S/m;  $\epsilon_r = 46.18$ ;  $\rho = 1000$  kg/m<sup>3</sup>

Phantom section: Flat Section

DASY5 Configuration:

- Probe: EX3DV4 - SN7504; ConvF(4.23, 4.23, 4.23); Calibrated: 5/18/2018
- Sensor-Surface: 2mm (Mechanical Surface Detection)
- Electronics: DAE4 Sn1552; Calibrated: 5/22/2018
- Phantom: SAM2; Type: QD OVA 004 Ax; Serial: 2089
- Measurement SW: DASY52, Version 52.10; SEMCAD X Version 14.6.11 (7437)

**Configuration/d=10mm, Pin=100 mW, dist=2.0mm (EX-Probe)/Area Scan (7x9x1):** Measurement grid:

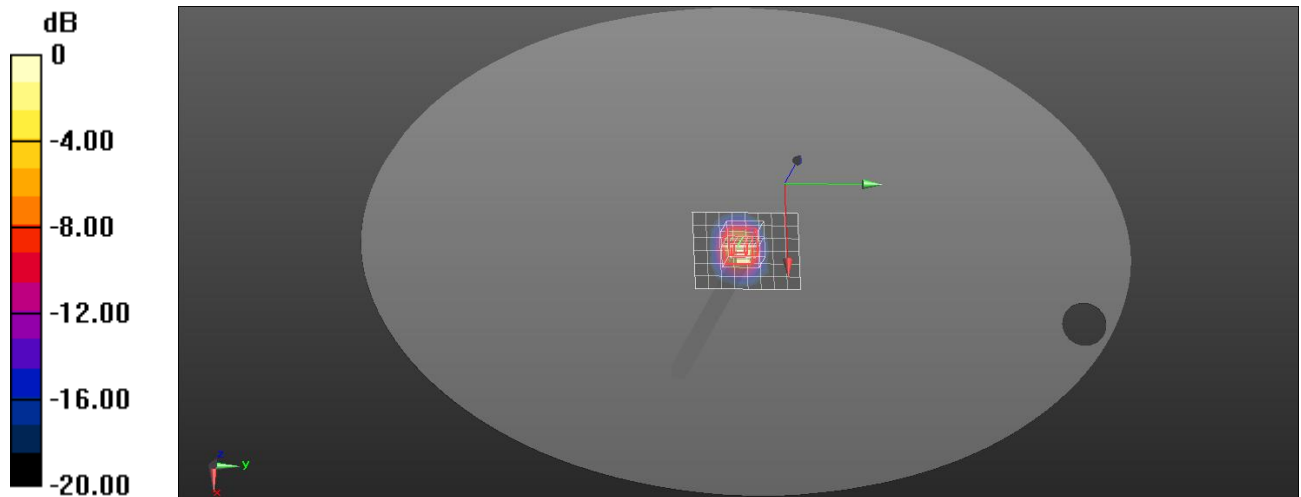
$dx=10$ mm,  $dy=10$ mm; Maximum value of SAR (measured) = 14.2 W/kg

**Configuration/d=10mm, Pin=100 mW, dist=2.0mm (EX-Probe)/Zoom Scan (8x8x8) (8x8x6)/Cube 0:**

Measurement grid:  $dx=4$ mm,  $dy=4$ mm,  $dz=2$ mm; Reference Value = 50.01 V/m; Power Drift = -0.02 dB

Peak SAR (extrapolated) = 36.2 W/kg

**SAR(1 g) = 8.46 W/kg; SAR(10 g) = 2.39 W/kg** Maximum value of SAR (measured) = 17.2 W/kg



0 dB = 17.2 W/kg = 12.36 dBW/kg

Test Date: 1/30/2019

**SystemPerformanceCheck-SAM2-D5750MSL**

**DUT: Dipole D5GHzV2; Type: D5GHzV2**

Communication System: CW; Frequency: 5750 MHz; Duty Cycle: 1:1

Medium parameters used:  $f = 5750 \text{ MHz}$ ;  $\sigma = 6.03 \text{ S/m}$ ;  $\epsilon_r = 46.04$ ;  $\rho = 1000 \text{ kg/m}^3$

Phantom section: Flat Section

DASY5 Configuration:

- Probe: EX3DV4 - SN7504; ConvF(4.42, 4.42, 4.42); Calibrated: 5/18/2018
- Sensor-Surface: 2mm (Mechanical Surface Detection)
- Electronics: DAE4 Sn1552; Calibrated: 5/22/2018
- Phantom: SAM2; Type: QD OVA 004 Ax; Serial: 2089
- Measurement SW: DASY52, Version 52.10; SEMCAD X Version 14.6.11 (7437)

**Configuration/d=10mm, Pin=100 mW, dist=2.0mm (EX-Probe)/Area Scan (7x9x1):** Measurement grid:

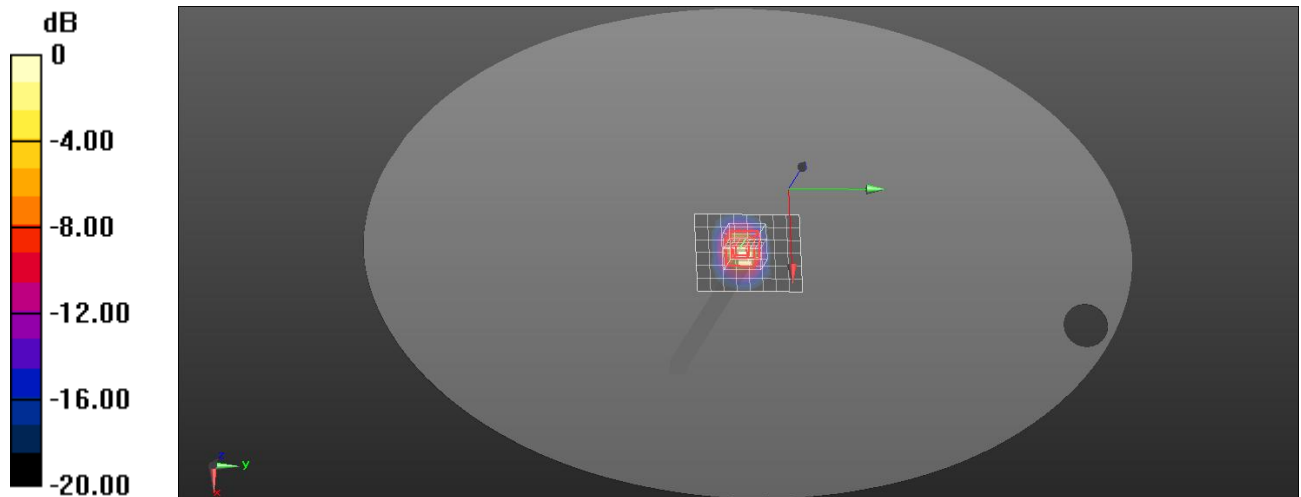
$dx=10\text{mm}$ ,  $dy=10\text{mm}$ ; Maximum value of SAR (measured) = 12.6 W/kg

**Configuration/d=10mm, Pin=100 mW, dist=2.0mm (EX-Probe)/Zoom Scan (8x8x8) (8x8x6)/Cube 0:**

Measurement grid:  $dx=4\text{mm}$ ,  $dy=4\text{mm}$ ,  $dz=2\text{mm}$ ; Reference Value = 47.29 V/m; Power Drift = -0.06 dB

Peak SAR (extrapolated) = 33.6 W/kg

**SAR(1 g) = 7.48 W/kg; SAR(10 g) = 2.09 W/kg** Maximum value of SAR (measured) = 15.2 W/kg



0 dB = 15.2 W/kg = 11.82 dBW/kg

## Annex B - Test Data Plots

Plot 1#

Test Date: 1/29/2019

**DUT: DOLPHIN CT40; Type: CT40-L0N**

**Procedure Name: Bluetooth DH5 2402MHz Head Left Cheek**

Communication System: Bluetooth; Frequency: 2402 MHz; Duty Cycle: 1:1

Medium parameters used:  $f = 2402$  MHz;  $\sigma = 1.8$  S/m;  $\epsilon_r = 40.11$ ;  $\rho = 1000$  kg/m<sup>3</sup>; Tissue

Temp(celsius)-22.5°C; Phantom section: Left Section

DASY5 Configuration:

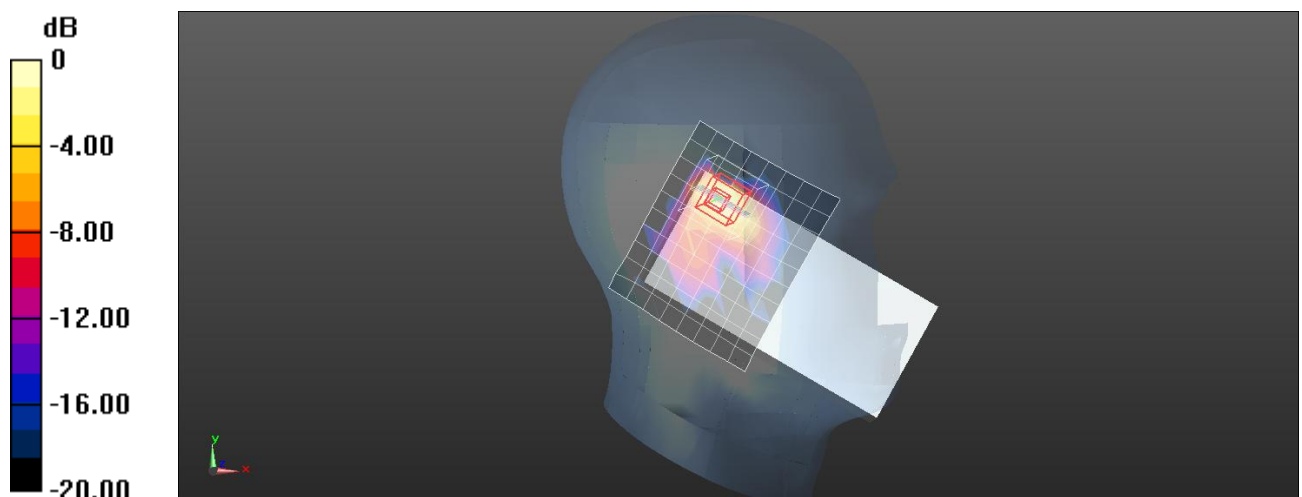
- Probe: EX3DV4 - SN7504; ConvF(7.89, 7.89, 7.89); Calibrated: 5/18/2018
- Sensor-Surface: 4mm (Mechanical Surface Detection)
- Electronics: DAE4 Sn1552; Calibrated: 5/22/2018
- Phantom: SAM1; Type: QD000P40CD; Serial: TP:1954
- Measurement SW: DASY52, Version 52.10; SEMCAD X Version 14.6.11 (7437)

**Configuration/Bluetooth DH5 2402MHz Left Cheek/Area Scan (11x9x1):** Measurement grid: dx=12mm, dy=12mm; Maximum value of SAR (measured) = 0.0772 W/kg

**Configuration/Bluetooth DH5 2402MHz Left Cheek/Zoom Scan (8x8x7)/Cube 0:** Measurement grid: dx=5mm, dy=5mm, dz=5mm; Reference Value = 3.732 V/m; Power Drift = -0.03 dB

Peak SAR (extrapolated) = 0.175 W/kg

**SAR(1 g) = 0.069 W/kg; SAR(10 g) = 0.027 W/kg** Maximum value of SAR (measured) = 0.0760 W/kg



0 dB = 0.0760 W/kg = -11.19 dBW/kg

Plot 2#

Test Date: 1/29/2019

**DUT: DOLPHIN CT40; Type: CT40-L0N**

**Procedure Name: 802.11b 2412MHz Left Cheek**

Communication System: 802.11b; Frequency: 2412 MHz; Duty Cycle: 1:1

Medium parameters used:  $f = 2412 \text{ MHz}$ ;  $\sigma = 1.8 \text{ S/m}$ ;  $\epsilon_r = 40.09$ ;  $\rho = 1000 \text{ kg/m}^3$ ; Tissue

Temp(celsius)-22.5°C; Phantom section: Left Section

DASY5 Configuration:

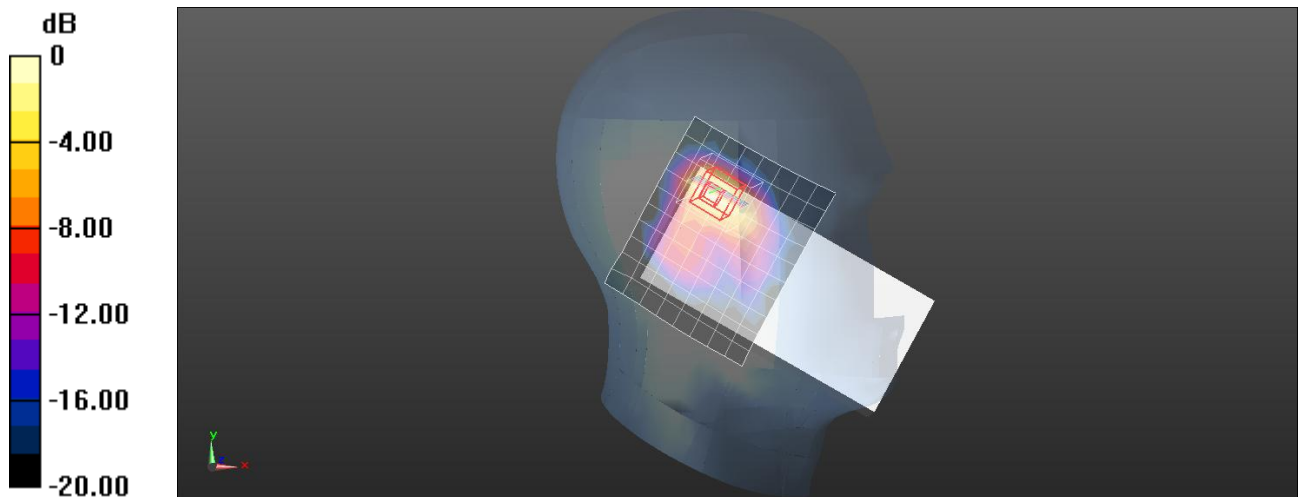
- Probe: EX3DV4 - SN7504; ConvF(7.89, 7.89, 7.89); Calibrated: 5/18/2018
- Sensor-Surface: 4mm (Mechanical Surface Detection)
- Electronics: DAE4 Sn1552; Calibrated: 5/22/2018
- Phantom: SAM1; Type: QD000P40CD; Serial: TP:1954
- Measurement SW: DASY52, Version 52.10; SEMCAD X Version 14.6.11 (7437)

**Configuration/802.11b 2412MHz Left Cheek/Area Scan (11x9x1):** Measurement grid:  $dx=12\text{mm}$ ,  $dy=12\text{mm}$ ; Maximum value of SAR (measured) = 0.316 W/kg

**Configuration/802.11b 2412MHz Left Cheek/Zoom Scan (7x8x7)/Cube 0:** Measurement grid:  $dx=5\text{mm}$ ,  $dy=5\text{mm}$ ,  $dz=5\text{mm}$ ; Reference Value = 6.437 V/m; Power Drift = -0.11 dB

Peak SAR (extrapolated) = 0.739 W/kg

**SAR(1 g) = 0.295 W/kg; SAR(10 g) = 0.121 W/kg** Maximum value of SAR (measured) = 0.348 W/kg



0 dB = 0.348 W/kg = -4.58 dBW/kg

Plot 3#

Test Date: 1/29/2019

**DUT: DOLPHIN CT40; Type: CT40-L0N**

**Procedure Name: 802.11a 5580MHz Head Left Cheek**

Communication System: 802.11a; Frequency: 5580 MHz; Duty Cycle: 1:1

Medium parameters used:  $f = 5580 \text{ MHz}$ ;  $\sigma = 4.91 \text{ S/m}$ ;  $\epsilon_r = 34.54$ ;  $\rho = 1000 \text{ kg/m}^3$ ; Tissue

Temp(celsius)-22.5°C; Phantom section: Left Section

DASY5 Configuration:

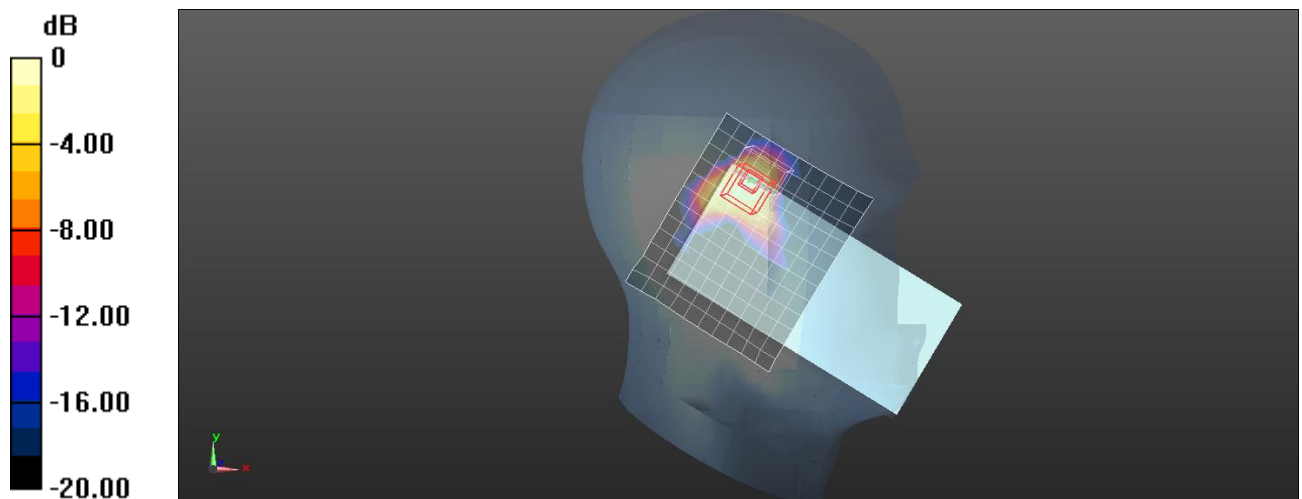
- Probe: EX3DV4 - SN7504; ConvF(4.97, 4.97, 4.97); Calibrated: 5/18/2018
- Sensor-Surface: 2mm (Mechanical Surface Detection)
- Electronics: DAE4 Sn1552; Calibrated: 5/22/2018
- Phantom: SAM1; Type: QD000P40CD; Serial: TP:1954
- Measurement SW: DASY52, Version 52.10; SEMCAD X Version 14.6.11 (7437)

**Configuration/802.11a 5580MHz Left Cheek/Area Scan (13x11x1):** Measurement grid:  $dx=10\text{mm}$ ,  $dy=10\text{mm}$ ; Maximum value of SAR (measured) = 0.407 W/kg

**Configuration/802.11a 5580MHz Left Cheek/Zoom Scan (9x8x6)/Cube 0:** Measurement grid:  $dx=4\text{mm}$ ,  $dy=4\text{mm}$ ,  $dz=2\text{mm}$ ; Reference Value = 2.949 V/m; Power Drift = 0.13 dB

Peak SAR (extrapolated) = 0.924 W/kg

**SAR(1 g) = 0.204 W/kg; SAR(10 g) = 0.070 W/kg** Maximum value of SAR (measured) = 0.462 W/kg



0 dB = 0.462 W/kg = -3.35 dBW/kg

Plot 4#

Test Date: 1/29/2019

**DUT: DOLPHIN CT40; Type: CT40-L0N**

**Procedure Name: Bluetooth DH5 2402MHz Body Front Side with Earphone**

Communication System: Bluetooth; Frequency: 2402 MHz; Duty Cycle: 1:1

Medium parameters used:  $f = 2402 \text{ MHz}$ ;  $\sigma = 1.98 \text{ S/m}$ ;  $\epsilon_r = 52.37$ ;  $\rho = 1000 \text{ kg/m}^3$ ; Tissue

Temp(celsius)-22.5°C; Phantom section: Flat Section

DASY5 Configuration:

- Probe: EX3DV4 - SN7504; ConvF(7.74, 7.74, 7.74); Calibrated: 5/18/2018
- Sensor-Surface: 4mm (Mechanical Surface Detection)
- Electronics: DAE4 Sn1552; Calibrated: 5/22/2018
- Phantom: SAM2; Type: QD OVA 004 Ax; Serial: 2089
- Measurement SW: DASY52, Version 52.10; SEMCAD X Version 14.6.11 (7437)

**Configuration/Bluetooth DH5 2402MHz Body Front Side/Area Scan (11x9x1):** Measurement grid:

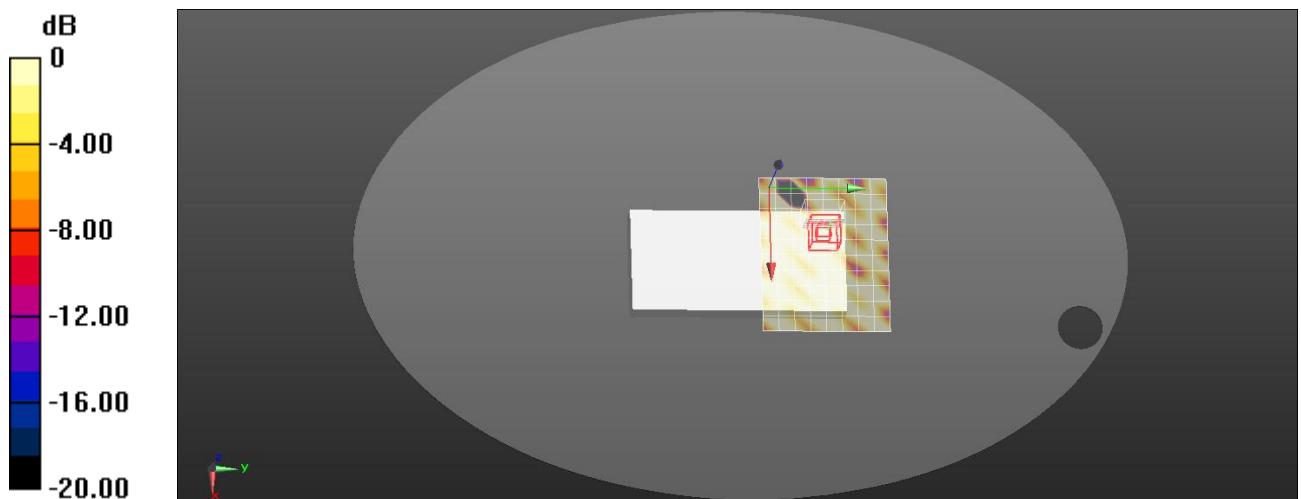
$dx=12\text{mm}$ ,  $dy=12\text{mm}$ ; Maximum value of SAR (measured) = 0.0190 W/kg

**Configuration/Bluetooth DH5 2402MHz Body Front Side/Zoom Scan (7x7x7)/Cube 0:** Measurement

grid:  $dx=5\text{mm}$ ,  $dy=5\text{mm}$ ,  $dz=5\text{mm}$ ; Reference Value = 0.9980 V/m; Power Drift = -0.15 dB

Peak SAR (extrapolated) = 0.0610 W/kg

**SAR(1 g) = 0.013 W/kg; SAR(10 g) = 0.00516 W/kg** Maximum value of SAR (measured) = 0.0100 W/kg



0 dB = 0.0100 W/kg = -20.00 dBW/kg



Plot 5#

Test Date: 1/29/2019

**DUT: DOLPHIN CT40; Type: CT40-L0N**

**Procedure Name: 802.11b 2412MHz Body Front Side**

Communication System: 802.11b; Frequency: 2412 MHz; Duty Cycle: 1:1

Medium parameters used:  $f = 2412 \text{ MHz}$ ;  $\sigma = 1.99 \text{ S/m}$ ;  $\epsilon_r = 52.35$ ;  $\rho = 1000 \text{ kg/m}^3$ ; Tissue

Temp(celsius)-22.5°C; Phantom section: Flat Section

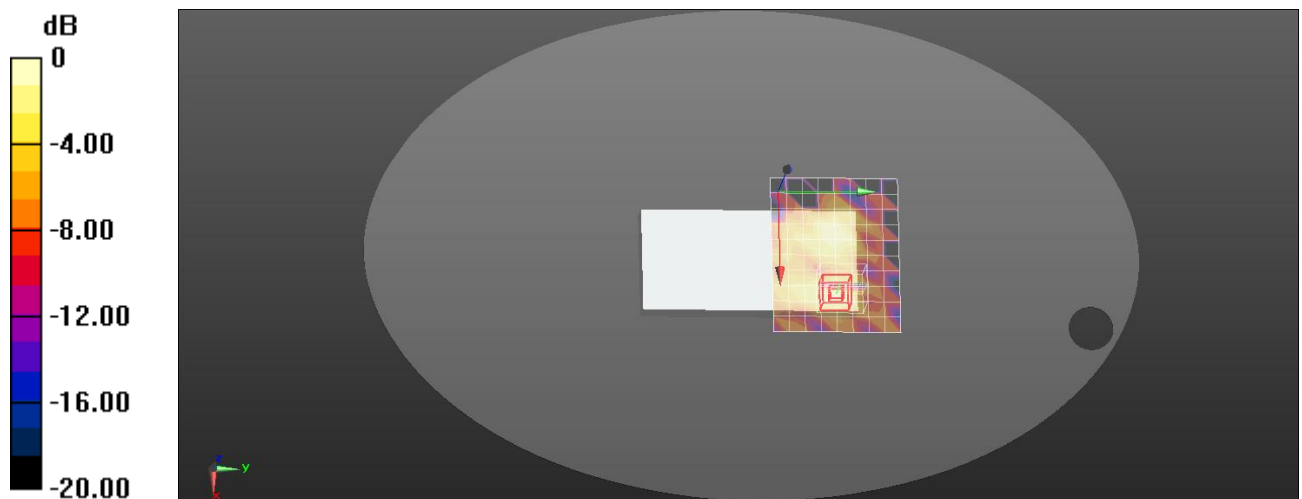
DASY5 Configuration:

- Probe: EX3DV4 - SN7504; ConvF(7.74, 7.74, 7.74); Calibrated: 5/18/2018
- Sensor-Surface: 4mm (Mechanical Surface Detection)
- Electronics: DAE4 Sn1552; Calibrated: 5/22/2018
- Phantom: SAM2; Type: QD OVA 004 Ax; Serial: 2089
- Measurement SW: DASY52, Version 52.10; SEMCAD X Version 14.6.11 (7437)

**Configuration/802.11b 2412MHz Body Front Side/Area Scan (11x9x1):** Measurement grid:  $dx=12\text{mm}$ ,  $dy=12\text{mm}$ ; Maximum value of SAR (measured) = 0.0351 W/kg

**Configuration/802.11b 2412MHz Body Front Side/Zoom Scan (7x8x7)/Cube 0:** Measurement grid:  $dx=5\text{mm}$ ,  $dy=5\text{mm}$ ,  $dz=5\text{mm}$ ; Reference Value = 2.112 V/m; Power Drift = -0.08 dB  
Peak SAR (extrapolated) = 0.0810 W/kg

**SAR(1 g) = 0.039 W/kg; SAR(10 g) = 0.018 W/kg** Maximum value of SAR (measured) = 0.0469 W/kg



0 dB = 0.0469 W/kg = -13.29 dBW/kg

Plot 6#

Test Date: 1/29/2019

**DUT: DOLPHIN CT40; Type: CT40-L0N**
**Procedure Name: 802.11a 5580MHz Body Back Side**

Communication System: 802.11a; Frequency: 5580 MHz; Duty Cycle: 1:1

 Medium parameters used:  $f = 5580 \text{ MHz}$ ;  $\sigma = 5.97 \text{ S/m}$ ;  $\epsilon_r = 46.22$ ;  $\rho = 1000 \text{ kg/m}^3$ ; Tissue

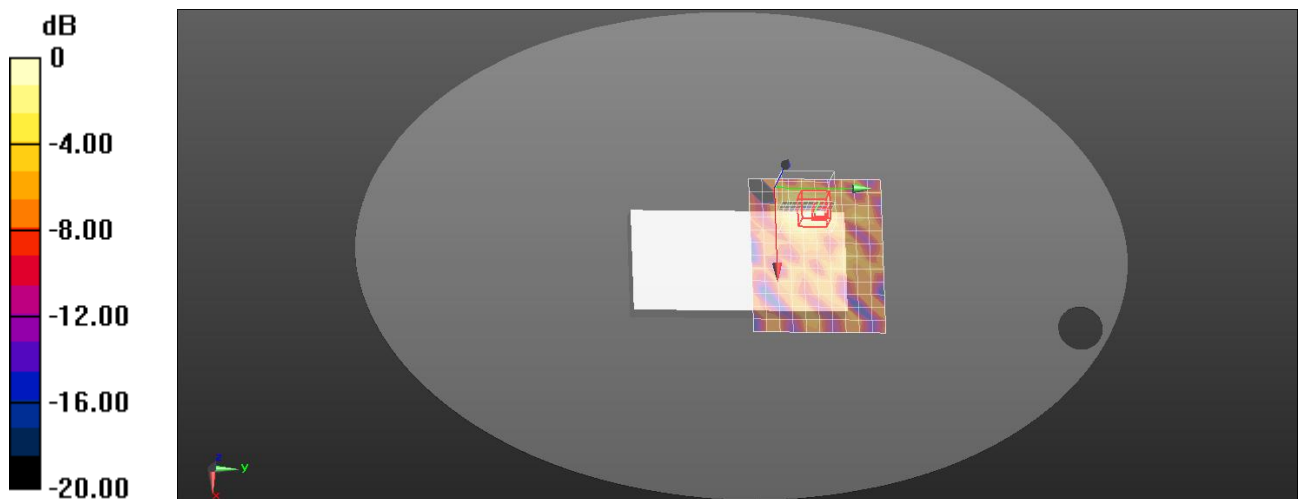
Temp(celsius)-22.5°C; Phantom section: Flat Section

DASY5 Configuration:

- Probe: EX3DV4 - SN7504; ConvF(4.23, 4.23, 4.23); Calibrated: 5/18/2018
- Sensor-Surface: 2mm (Mechanical Surface Detection)
- Electronics: DAE4 Sn1552; Calibrated: 5/22/2018
- Phantom: SAM2; Type: QD OVA 004 Ax; Serial: 2089
- Measurement SW: DASY52, Version 52.10; SEMCAD X Version 14.6.11 (7437)

**Configuration/802.11a 5580MHz Body Back Side/Area Scan (13x11x1):** Measurement grid:  $dx=10\text{mm}$ ,  $dy=10\text{mm}$ ; Maximum value of SAR (measured) = 0.289 W/kg

**Configuration/802.11a 5580MHz Body Back Side/Zoom Scan (11x11x6)/Cube 0:** Measurement grid:  $dx=4\text{mm}$ ,  $dy=4\text{mm}$ ,  $dz=2\text{mm}$ ; Reference Value = 0.7160 V/m; Power Drift = -0.04 dB  
 Peak SAR (extrapolated) = 1.22 W/kg

**SAR(1 g) = 0.130 W/kg; SAR(10 g) = 0.052 W/kg** Maximum value of SAR (measured) = 0.280 W/kg

 $0 \text{ dB} = 0.280 \text{ W/kg} = -5.53 \text{ dBW/kg}$

Plot 7#

Test Date: 1/29/2019

**DUT: DOLPHIN CT40; Type: CT40-L0N**
**Procedure Name: Bluetooth DH5 2402MHz Extremity Front Side with Earphone**

Communication System: Bluetooth; Frequency: 2402 MHz; Duty Cycle: 1:1

 Medium parameters used:  $f = 2402 \text{ MHz}$ ;  $\sigma = 1.98 \text{ S/m}$ ;  $\epsilon_r = 52.37$ ;  $\rho = 1000 \text{ kg/m}^3$ ; Tissue

Temp(celsius)-22.5°C; Phantom section: Flat Section

DASY5 Configuration:

- Probe: EX3DV4 - SN7504; ConvF(7.74, 7.74, 7.74); Calibrated: 5/18/2018
- Sensor-Surface: 4mm (Mechanical Surface Detection)
- Electronics: DAE4 Sn1552; Calibrated: 5/22/2018
- Phantom: SAM2; Type: QD OVA 004 Ax; Serial: 2089
- Measurement SW: DASY52, Version 52.10; SEMCAD X Version 14.6.11 (7437)

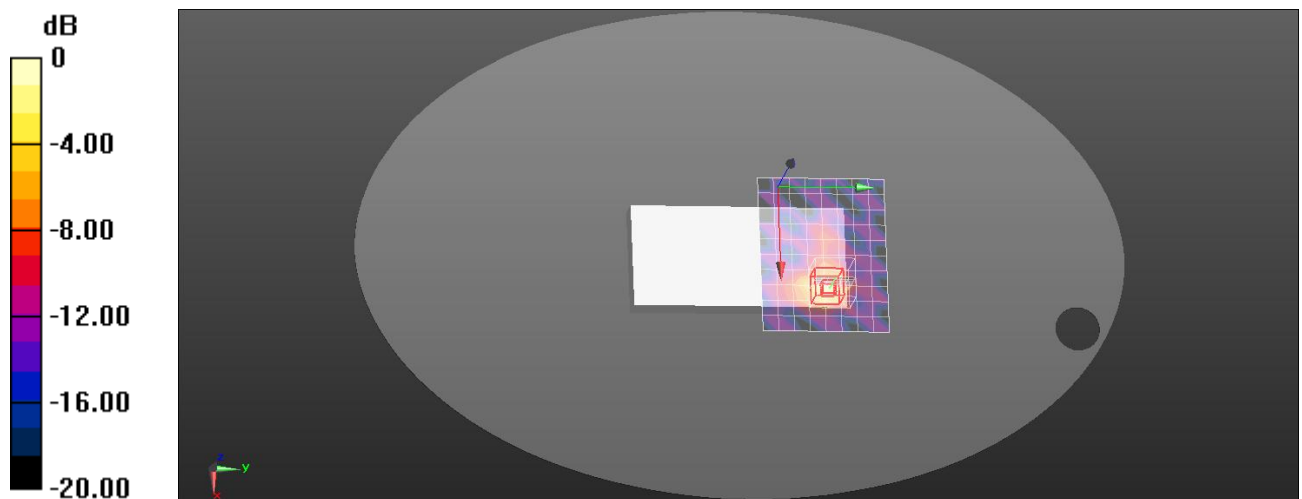
**Configuration/Bluetooth DH5 2402MHz Extremity Front Side/Area Scan (11x9x1):** Measurement grid:

 $dx=12\text{mm}$ ,  $dy=12\text{mm}$ ; Maximum value of SAR (measured) = 0.152 W/kg

**Configuration/Bluetooth DH5 2402MHz Extremity Front Side/Zoom Scan (7x7x7)/Cube 0:**

 Measurement grid:  $dx=5\text{mm}$ ,  $dy=5\text{mm}$ ,  $dz=5\text{mm}$ ; Reference Value = 0.9780 V/m; Power Drift = -0.11 dB

Peak SAR (extrapolated) = 0.380 W/kg

**SAR(1 g) = 0.144 W/kg; SAR(10 g) = 0.056 W/kg** Maximum value of SAR (measured) = 0.171 W/kg

 $0 \text{ dB} = 0.171 \text{ W/kg} = -7.67 \text{ dBW/kg}$

Plot 8#

Test Date: 1/29/2019

**DUT: DOLPHIN CT40; Type: CT40-L0N**
**Procedure Name: 802.11b 2462MHz Extremity Front Side with Earphone**

Communication System: 802.11b; Frequency: 2462 MHz; Duty Cycle: 1:1

 Medium parameters used:  $f = 2462 \text{ MHz}$ ;  $\sigma = 2.04 \text{ S/m}$ ;  $\epsilon_r = 52.25$ ;  $\rho = 1000 \text{ kg/m}^3$ ; Tissue

Temp(celsius)-22.5°C; Phantom section: Flat Section

DASY5 Configuration:

- Probe: EX3DV4 - SN7504; ConvF(7.74, 7.74, 7.74); Calibrated: 5/18/2018
- Sensor-Surface: 4mm (Mechanical Surface Detection)
- Electronics: DAE4 Sn1552; Calibrated: 5/22/2018
- Phantom: SAM2; Type: QD OVA 004 Ax; Serial: 2089
- Measurement SW: DASY52, Version 52.10; SEMCAD X Version 14.6.11 (7437)

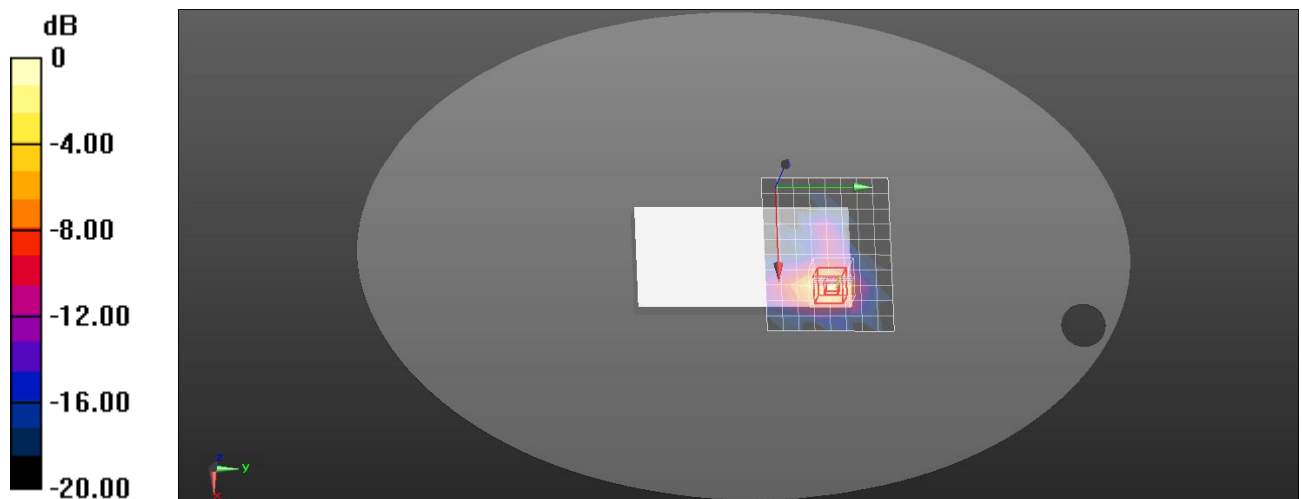
**Configuration/802.11b 2462MHz Extremity Front Side/Area Scan (11x9x1):** Measurement grid:

 $dx=12\text{mm}$ ,  $dy=12\text{mm}$ ; Maximum value of SAR (measured) = 0.529 W/kg

**Configuration/802.11b 2462MHz Extremity Front Side/Zoom Scan (7x7x7)/Cube 0:** Measurement grid:

 $dx=5\text{mm}$ ,  $dy=5\text{mm}$ ,  $dz=5\text{mm}$ ; Reference Value = 0.7620 V/m; Power Drift = 0.08 dB

Peak SAR (extrapolated) = 1.25 W/kg

**SAR(1 g) = 0.476 W/kg; SAR(10 g) = 0.186 W/kg** Maximum value of SAR (measured) = 0.547 W/kg

 $0 \text{ dB} = 0.547 \text{ W/kg} = -2.62 \text{ dBW/kg}$

Plot 9#

Test Date: 1/30/2019

**DUT: DOLPHIN CT40; Type: CT40-L0N**
**Procedure Name: 802.11a 5825MHz Extremity Left Edge**

Communication System: 802.11a; Frequency: 5825 MHz; Duty Cycle: 1:1

 Medium parameters used:  $f = 5825 \text{ MHz}$ ;  $\sigma = 6.14 \text{ S/m}$ ;  $\epsilon_r = 45.9$ ;  $\rho = 1000 \text{ kg/m}^3$ ; Tissue

Temp(celsius)-22.5°C; Phantom section: Flat Section

DASY5 Configuration:

- Probe: EX3DV4 - SN7504; ConvF(4.42, 4.42, 4.42); Calibrated: 5/18/2018
- Sensor-Surface: 2mm (Mechanical Surface Detection)
- Electronics: DAE4 Sn1552; Calibrated: 5/22/2018
- Phantom: SAM2; Type: QD OVA 004 Ax; Serial: 2089
- Measurement SW: DASY52, Version 52.10; SEMCAD X Version 14.6.11 (7437)

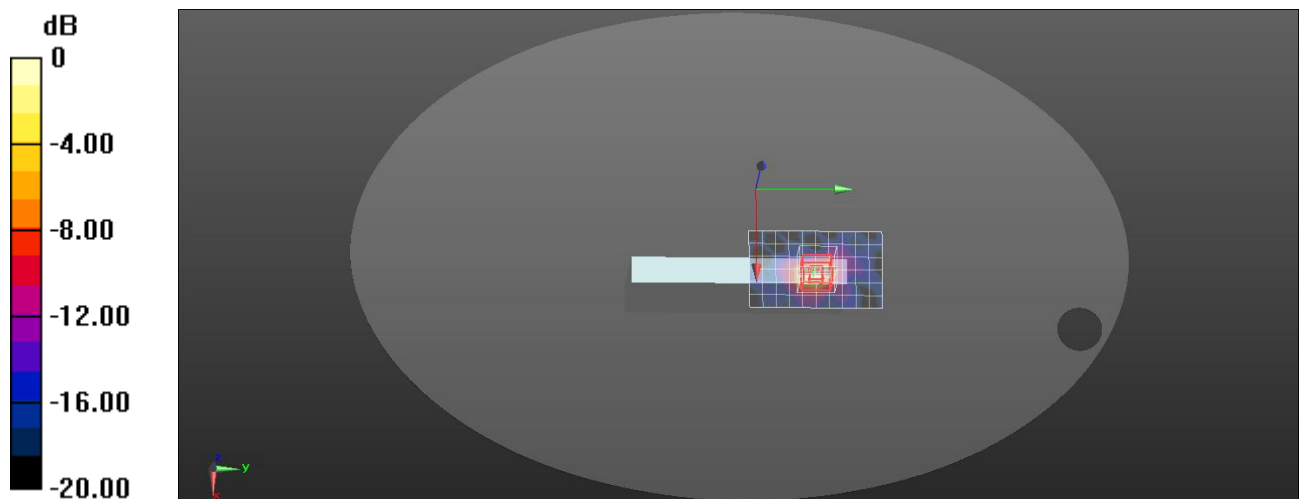
**Configuration/802.11a 5825MHz Extremity Left Edge/Area Scan (7x11x1):** Measurement grid:

 $dx=10\text{mm}$ ,  $dy=10\text{mm}$ ; Maximum value of SAR (measured) = 1.91 W/kg

**Configuration/802.11a 5825MHz Extremity Left Edge/Zoom Scan (8x8x6)/Cube 0:** Measurement grid:

 $dx=4\text{mm}$ ,  $dy=4\text{mm}$ ,  $dz=2\text{mm}$ ; Reference Value = 0.7820 V/m; Power Drift = -0.07 dB

Peak SAR (extrapolated) = 5.37 W/kg

**SAR(1 g) = 1.17 W/kg; SAR(10 g) = 0.304 W/kg.** Maximum value of SAR (measured) = 2.48 W/kg

 $0 \text{ dB} = 2.48 \text{ W/kg} = 3.94 \text{ dBW/kg}$

## **Annex C - SAR Test Setup Photos**

Please refer to document "1901RSU044-UT".

## **Annex D - EUT External Photos**

Please refer to document "1901RSU044-UE".

## **Annex E - Equipment Calibration Report**

Please refer to document "Annex E - Equipment Calibration Report.pdf".

\_\_\_\_\_ The End \_\_\_\_\_