

Honeywell

THE POWER OF **CONNECTED**

Dolphin™ CN85

powered by Android™

Quick Start Guide

Out of the Box

Make sure that your shipping box contains these items:

- Dolphin CN85 mobile computer (Model CN85LON or CN85L1N)
- Rechargeable 3.85 VDC Li-ion battery
- Stylus and tether
- Hand strap
- Product documentation

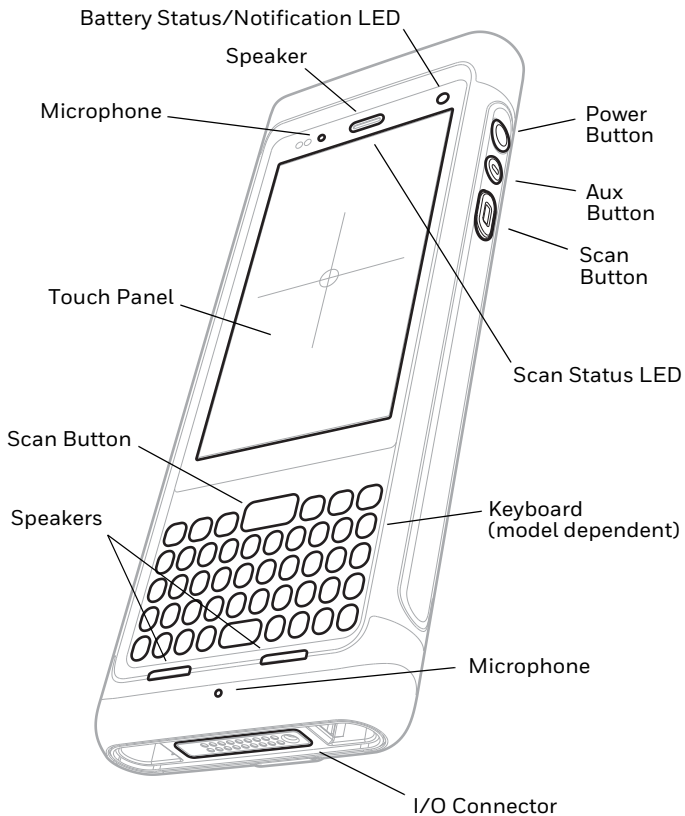
If you ordered accessories for your mobile computer, verify that they are also included with the order. Be sure to keep the original packaging in case you need to return the mobile computer for service.

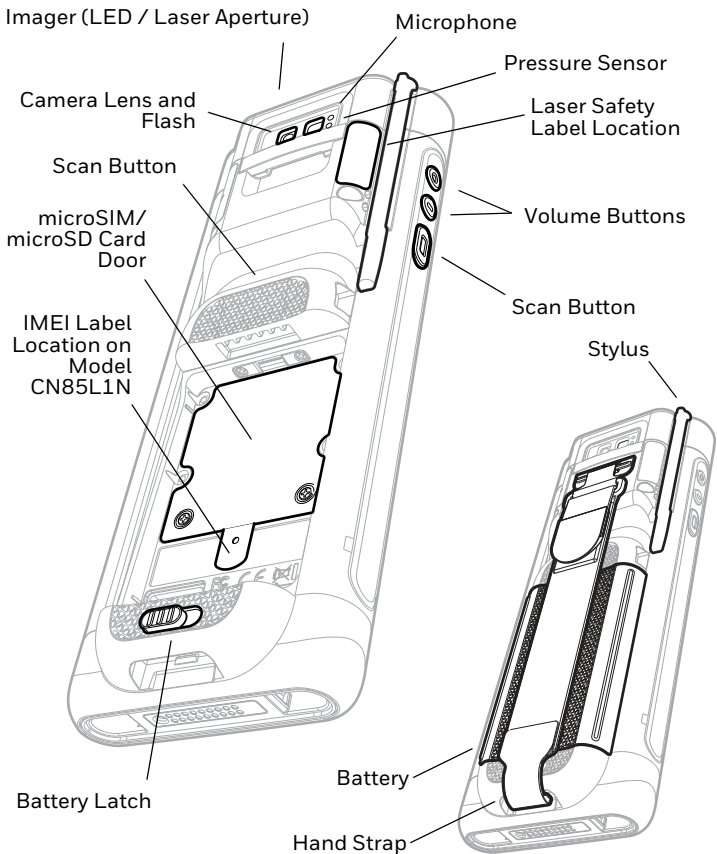
Note: *CN85LON models do not include a WWAN radio.*

Memory Card Specifications

Honeywell recommends the use of Single Level Cell (SLC) industrial grade microSD™ or microSDHC™ memory cards with Dolphin mobile computers for maximum performance and durability. Contact a Honeywell sales representative for additional information on qualified memory card options.

Mobile Computer Features

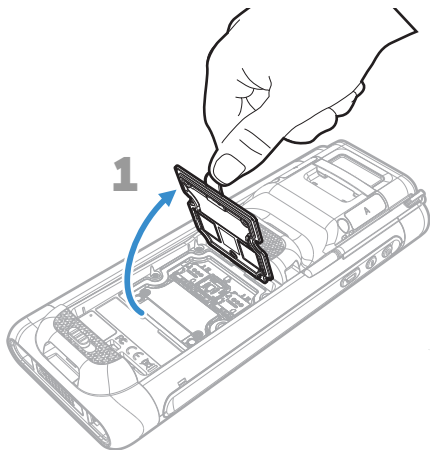




Install a microSIM Card / Install a microSD Card

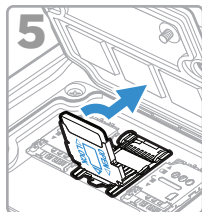
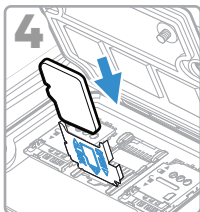
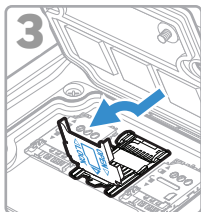


Always power off the computer before attempting to install or remove a card.



microSD

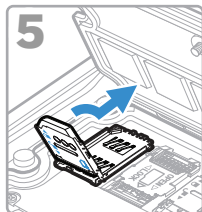
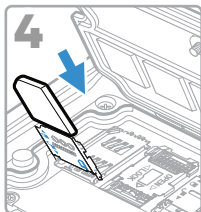
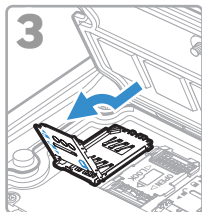
Format the microSD card before initial use.



SIM 1

Phone feature is available only on CN85L1N models.

On all models, when using a UICC card for NFC Secure Element NFC link encryption, install the card in SIM slot 1.



SIM 2

SIM 2 feature is available only on CN85L1N models.

