

#01_WLAN2.4GHz_802.11b 1Mbps_Left Cheek_Ch6_Sample 4

Communication System: 802.11b; Frequency: 2437 MHz; Duty Cycle: 1:1

Medium: HSL_2450_170118 Medium parameters used: $f = 2437$ MHz; $\sigma = 1.745$ S/m; $\epsilon_r = 40.536$; $\rho = 1000$ kg/m³

Ambient Temperature : 23.6 °C; Liquid Temperature : 22.6 °C

DASY5 Configuration:

- Probe: ES3DV3 - SN3270; ConvF(4.51, 4.51, 4.51); Calibrated: 2016/8/26;
- Sensor-Surface: 3mm (Mechanical Surface Detection)
- Electronics: DAE4 Sn778; Calibrated: 2016/5/12
- Phantom: SAM-Right; Type: SAM; Serial: 1795
- Measurement SW: DASY52, Version 52.8 (8); SEMCAD X Version 14.6.10 (7331)

Area Scan (101x111x1): Interpolated grid: dx=1.200 mm, dy=1.200 mm

Maximum value of SAR (interpolated) = 0.164 W/kg

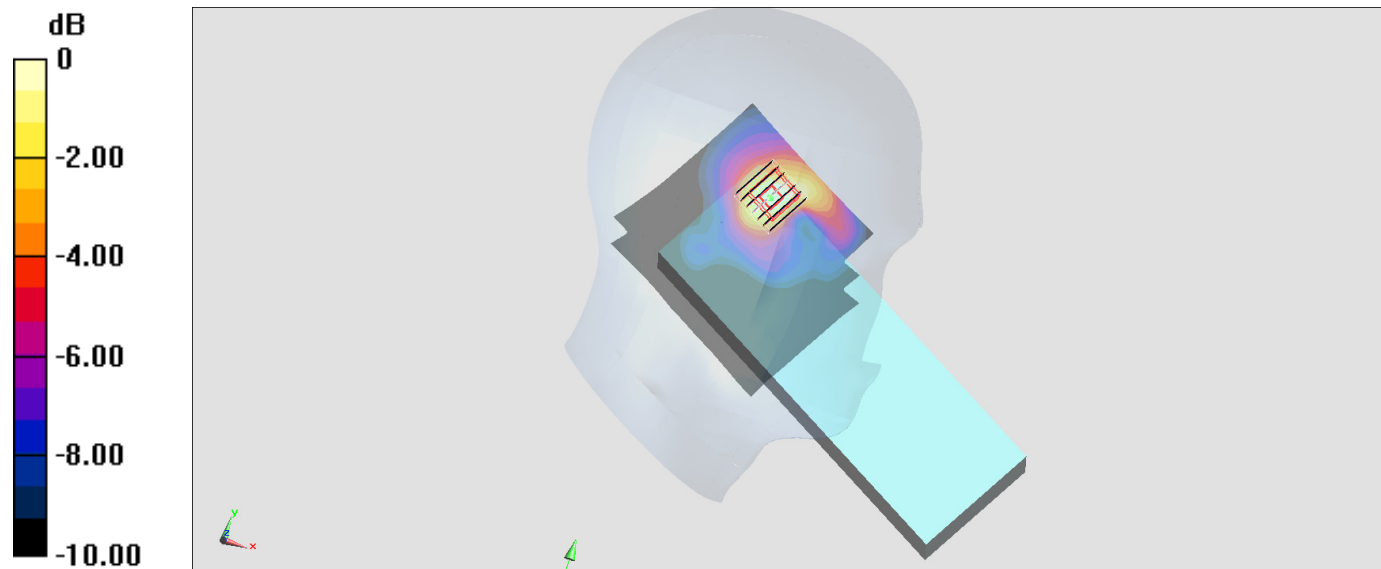
Zoom Scan (7x7x7)/Cube 0: Measurement grid: dx=5mm, dy=5mm, dz=5mm

Reference Value = 8.570 V/m; Power Drift = -0.02 dB

Peak SAR (extrapolated) = 0.227 W/kg

SAR(1 g) = 0.130 W/kg; SAR(10 g) = 0.071 W/kg

Maximum value of SAR (measured) = 0.161 W/kg



0 dB = 0.161 W/kg = -7.93 dBW/kg

#02_WLAN5GHz_802.11a 6Mbps_Left Cheek_Ch64_Sample 2

Communication System: 802.11a; Frequency: 5320 MHz; Duty Cycle: 1:1.015

Medium: HSL_5G_170121 Medium parameters used: $f = 5320$ MHz; $\sigma = 4.631$ S/m; $\epsilon_r = 37.255$; $\rho = 1000$ kg/m³

Ambient Temperature : 23 °C ; Liquid Temperature : 22 °C

DASY5 Configuration:

- Probe: EX3DV4 - SN3955; ConvF(5.04, 5.04, 5.04); Calibrated: 2016/11/24;
- Sensor-Surface: 1.4mm (Mechanical Surface Detection)
- Electronics: DAE4 Sn1399; Calibrated: 2016/11/17
- Phantom: SAM_Left; Type: QD000P40CD; Serial: TP:1644
- Measurement SW: DASY52, Version 52.8 (8); SEMCAD X Version 14.6.10 (7331)

Area Scan (111x121x1): Interpolated grid: dx=1.000 mm, dy=1.000 mm

Maximum value of SAR (interpolated) = 0.164 W/kg

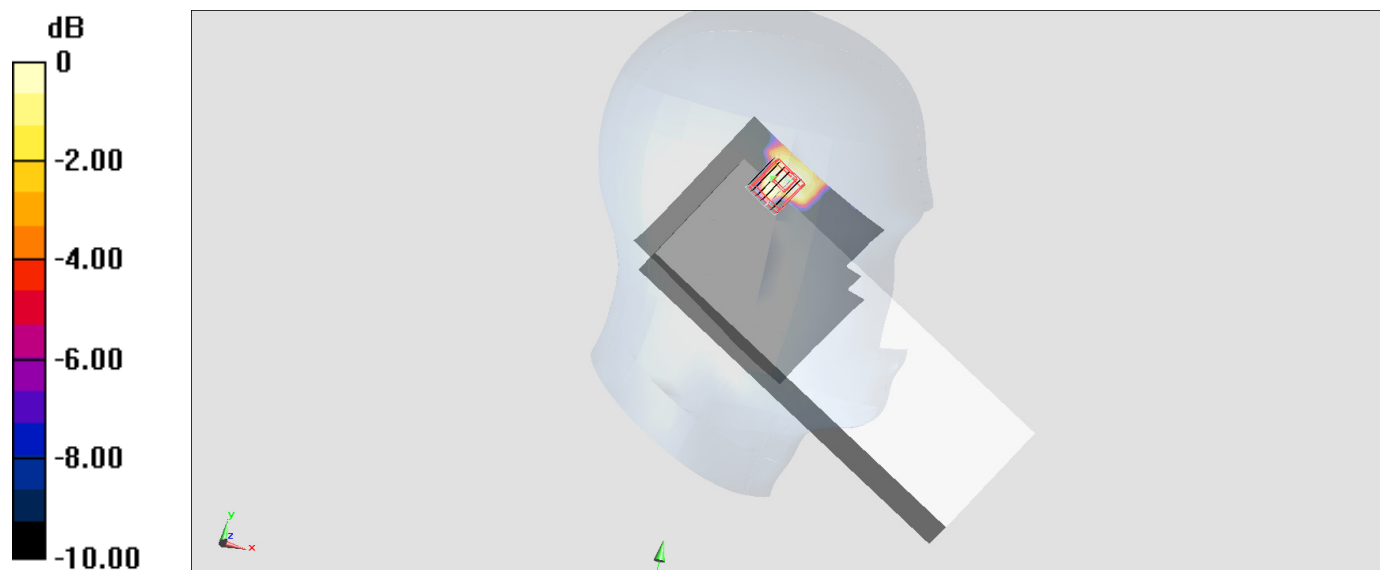
Zoom Scan (7x7x7)/Cube 0: Measurement grid: dx=4mm, dy=4mm, dz=1.4mm

Reference Value = 5.829 V/m; Power Drift = 0.11 dB

Peak SAR (extrapolated) = 0.186 W/kg

SAR(1 g) = 0.046 W/kg; SAR(10 g) = 0.016 W/kg

Maximum value of SAR (measured) = 0.119 W/kg



#03_WLAN5GHz_802.11a 6Mbps_Left Cheek_Ch140_Sample 2

Communication System: 802.11a; Frequency: 5700 MHz; Duty Cycle: 1:1.015

Medium: HSL_5G_170121 Medium parameters used: $f = 5700$ MHz; $\sigma = 5.034$ S/m; $\epsilon_r = 36.739$; $\rho = 1000$ kg/m³

Ambient Temperature : 23 °C ; Liquid Temperature : 22 °C

DASY5 Configuration:

- Probe: EX3DV4 - SN3955; ConvF(4.5, 4.5, 4.5); Calibrated: 2016/11/24;
- Sensor-Surface: 1.4mm (Mechanical Surface Detection)
- Electronics: DAE4 Sn1399; Calibrated: 2016/11/17
- Phantom: SAM_Left; Type: QD000P40CD; Serial: TP:1644
- Measurement SW: DASY52, Version 52.8 (8); SEMCAD X Version 14.6.10 (7331)

Area Scan (111x121x1): Interpolated grid: dx=1.000 mm, dy=1.000 mm

Maximum value of SAR (interpolated) = 0.297 W/kg

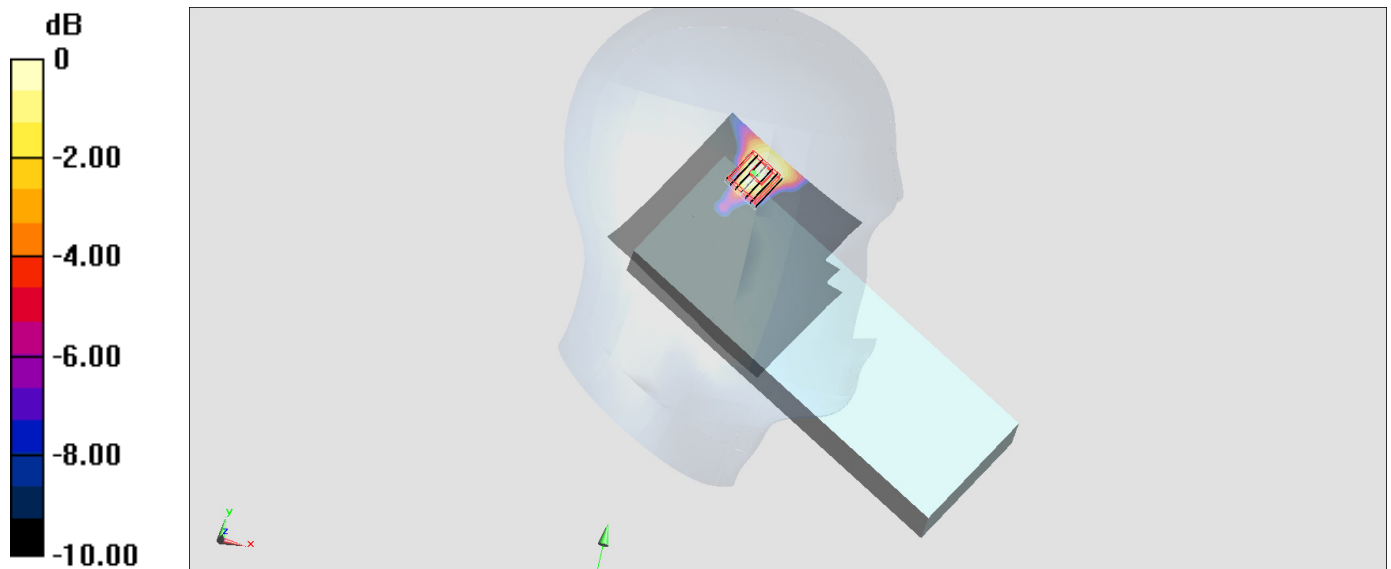
Zoom Scan (7x7x7)/Cube 0: Measurement grid: dx=4mm, dy=4mm, dz=1.4mm

Reference Value = 7.824 V/m; Power Drift = 0.11 dB

Peak SAR (extrapolated) = 0.365 W/kg

SAR(1 g) = 0.107 W/kg; SAR(10 g) = 0.036 W/kg

Maximum value of SAR (measured) = 0.258 W/kg



0 dB = 0.258 W/kg = -5.88 dBW/kg

#04_WLAN5GHz_802.11a 6Mbps_Left Cheek_Ch165_Sample 1

Communication System: 802.11a; Frequency: 5825 MHz; Duty Cycle: 1:1.015

Medium: HSL_5G_170121 Medium parameters used: $f = 5825$ MHz; $\sigma = 5.168$ S/m; $\epsilon_r = 36.576$; $\rho = 1000$ kg/m³

Ambient Temperature : 23 °C ; Liquid Temperature : 22 °C

DASY5 Configuration:

- Probe: EX3DV4 - SN3955; ConvF(4.63, 4.63, 4.63); Calibrated: 2016/11/24;
- Sensor-Surface: 1.4mm (Mechanical Surface Detection)
- Electronics: DAE4 Sn1399; Calibrated: 2016/11/17
- Phantom: SAM_Left; Type: QD000P40CD; Serial: TP:1644
- Measurement SW: DASY52, Version 52.8 (8); SEMCAD X Version 14.6.10 (7331)

Area Scan (111x121x1): Interpolated grid: dx=1.000 mm, dy=1.000 mm

Maximum value of SAR (interpolated) = 0.315 W/kg

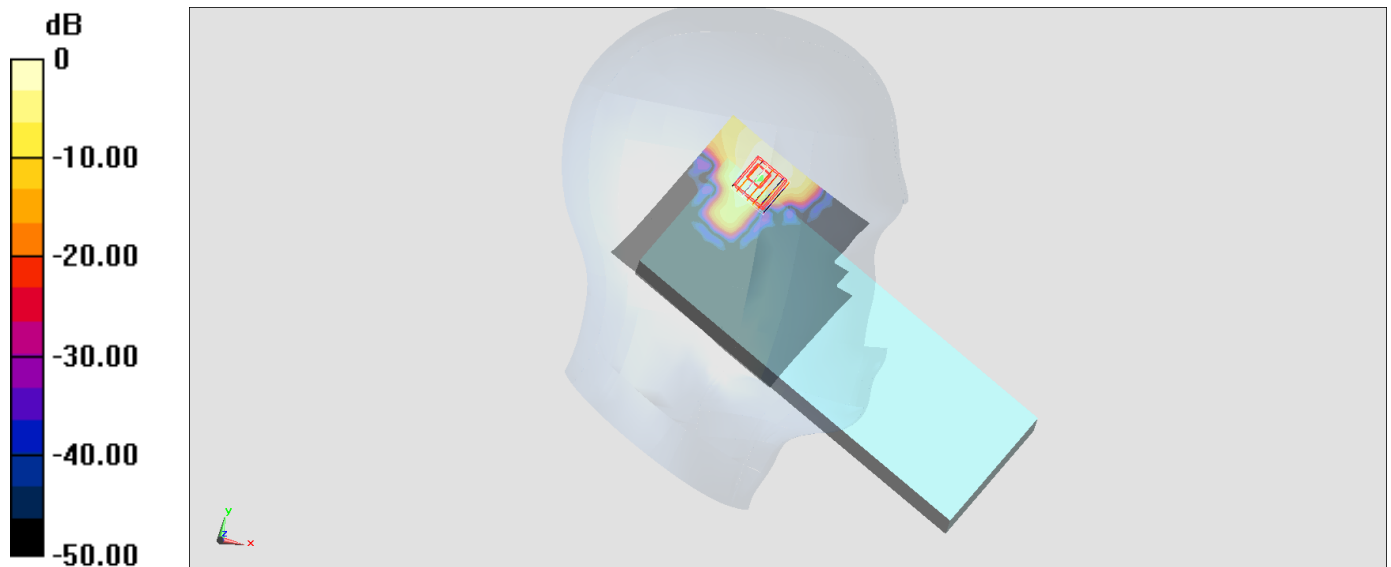
Zoom Scan (7x7x7)/Cube 0: Measurement grid: dx=4mm, dy=4mm, dz=1.4mm

Reference Value = 7.491 V/m; Power Drift = 0.02 dB

Peak SAR (extrapolated) = 0.419 W/kg

SAR(1 g) = 0.110 W/kg; SAR(10 g) = 0.037 W/kg

Maximum value of SAR (measured) = 0.272 W/kg



0 dB = 0.272 W/kg = -5.65 dBW/kg

#05_WLAN2.4GHz_802.11b 1Mbps_Right Side_0mm_Ch6_Sample 4

Communication System: 802.11b ; Frequency: 2437 MHz;Duty Cycle: 1:1

Medium: MSL_2450_170202 Medium parameters used : $f = 2437$ MHz; $\sigma = 1.97$ mho/m; $\epsilon_r = 53.8$; $\rho = 1000$ kg/m³

Ambient Temperature : 23.1 °C ; Liquid Temperature : 22.1 °C

DASY4 Configuration:

- Probe: ES3DV3 - SN3270; ConvF(4.28, 4.28, 4.28); Calibrated: 2016/8/26
- Sensor-Surface: 3mm (Mechanical Surface Detection)
- Electronics: DAE4 Sn778; Calibrated: 2016/5/12
- Phantom: SAM_Right; Type: QD000P40CD; Serial: TP:1383
- ;Postprocessing SW: SEMCAD, V1.8 Build 159

Area Scan (71x101x1): Measurement grid: dx=12mm, dy=12mm

Maximum value of SAR (interpolated) = 1.28 mW/g

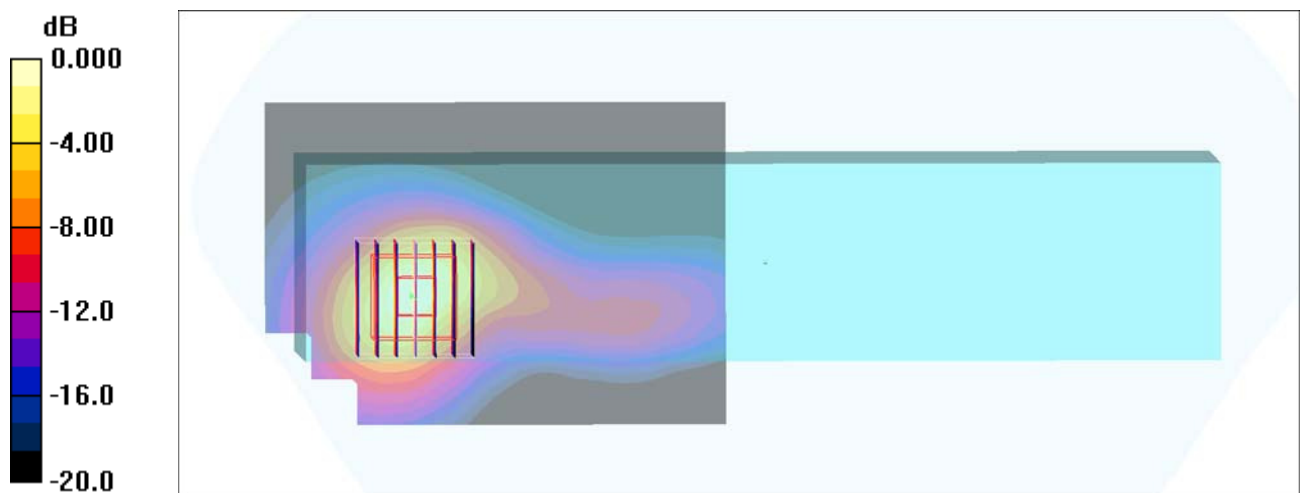
Zoom Scan (7x7x7)/Cube 0: Measurement grid: dx=5mm, dy=5mm, dz=5mm

Reference Value = 16.1 V/m; Power Drift = -0.005 dB

Peak SAR (extrapolated) = 2.09 W/kg

SAR(1 g) = 1.01 mW/g; SAR(10 g) = 0.443 mW/g

Maximum value of SAR (measured) = 1.33 mW/g



0 dB = 1.33mW/g

#06_WLAN5GHz_802.11a 6Mbps_Right Side_0mm_Ch64_Sample 4

Communication System: 802.11a; Frequency: 5320 MHz; Duty Cycle: 1:1.015

Medium: MSL_5G_170119 Medium parameters used: $f = 5320$ MHz; $\sigma = 5.616$ S/m; $\epsilon_r = 46.952$; $\rho = 1000$ kg/m³

Ambient Temperature : 23.1 °C; Liquid Temperature : 22.1 °C

DASY5 Configuration:

- Probe: EX3DV4 - SN3955; ConvF(4.51, 4.51, 4.51); Calibrated: 2016/11/24;
- Sensor-Surface: 1.4mm (Mechanical Surface Detection)
- Electronics: DAE4 Sn1399; Calibrated: 2016/11/17
- Phantom: SAM-Right; Type: SAM; Serial: 1795
- Measurement SW: DASY52, Version 52.8 (8); SEMCAD X Version 14.6.10 (7331)

Area Scan (111x111x1): Interpolated grid: dx=1.000 mm, dy=1.000 mm

Maximum value of SAR (interpolated) = 2.00 W/kg

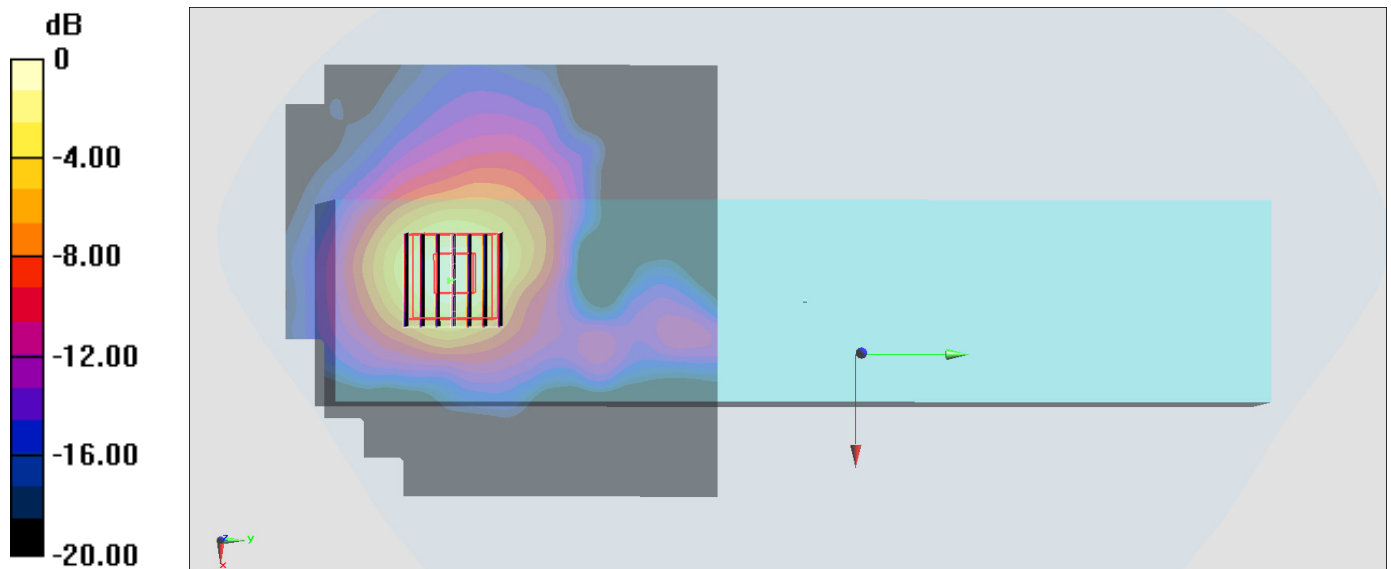
Zoom Scan (7x7x7)/Cube 0: Measurement grid: dx=4mm, dy=4mm, dz=1.4mm

Reference Value = 20.67 V/m; Power Drift = -0.13 dB

Peak SAR (extrapolated) = 3.25 W/kg

SAR(1 g) = 0.912 W/kg; SAR(10 g) = 0.327 W/kg

Maximum value of SAR (measured) = 2.04 W/kg



0 dB = 2.04 W/kg = 3.10 dBW/kg

#07_WLAN5GHz_802.11a 6Mbps_Right Side_0mm_Ch140_Sample 4

Communication System: 802.11a; Frequency: 5700 MHz; Duty Cycle: 1:1.015

Medium: MSL_5G_170120 Medium parameters used: $f = 5700$ MHz; $\sigma = 6.098$ S/m; $\epsilon_r = 46.203$; $\rho = 1000$ kg/m³

Ambient Temperature : 23.3 °C; Liquid Temperature : 22.3 °C

DASY5 Configuration:

- Probe: EX3DV4 - SN3955; ConvF(3.91, 3.91, 3.91); Calibrated: 2016/11/24;
- Sensor-Surface: 1.4mm (Mechanical Surface Detection)
- Electronics: DAE4 Sn1399; Calibrated: 2016/11/17
- Phantom: SAM-Right; Type: SAM; Serial: 1795
- Measurement SW: DASY52, Version 52.8 (8); SEMCAD X Version 14.6.10 (7331)

Area Scan (111x111x1): Interpolated grid: dx=1.000 mm, dy=1.000 mm

Maximum value of SAR (interpolated) = 2.15 W/kg

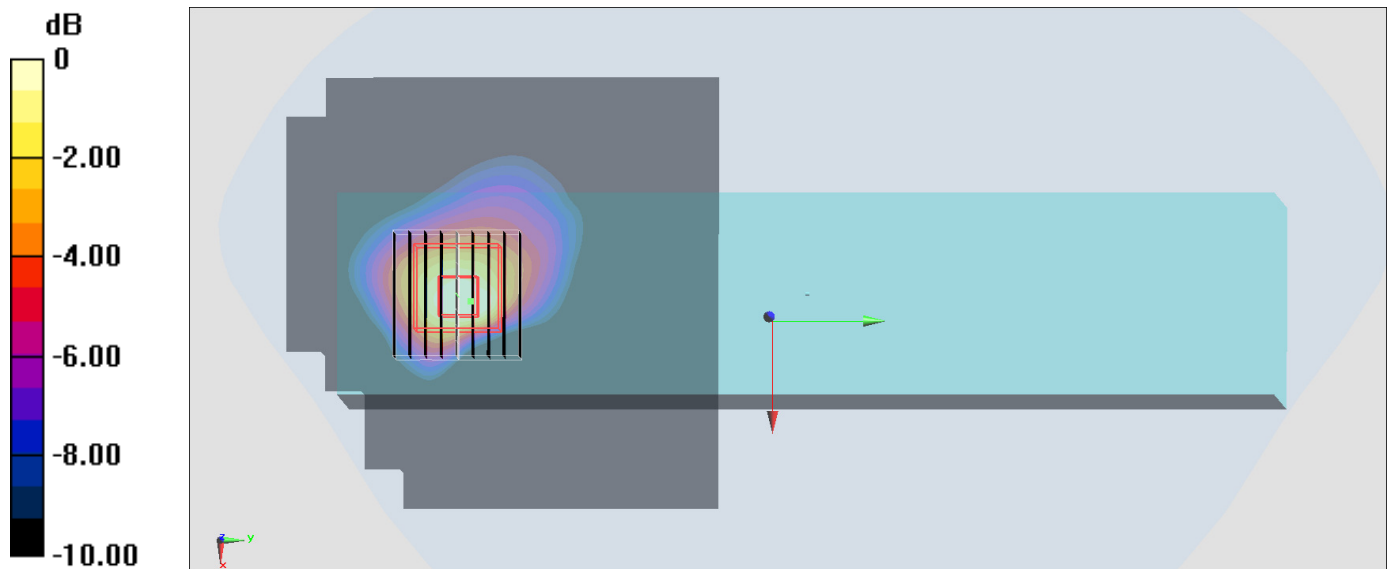
Zoom Scan (9x9x7)/Cube 0: Measurement grid: dx=4mm, dy=4mm, dz=1.4mm

Reference Value = 14.31 V/m; Power Drift = -0.12 dB

Peak SAR (extrapolated) = 3.13 W/kg

SAR(1 g) = 0.788 W/kg; SAR(10 g) = 0.288 W/kg

Maximum value of SAR (measured) = 1.85 W/kg



0 dB = 1.85 W/kg = 2.67 dBW/kg

#08_WLAN5GHz_802.11a 6Mbps_Right Side_0mm_Ch149_Sample 4

Communication System: 802.11a; Frequency: 5745 MHz; Duty Cycle: 1:1.015

Medium: MSL_5G_170202 Medium parameters used: $f = 5745 \text{ MHz}$; $\sigma = 6.13 \text{ mho/m}$; $\epsilon_r = 46.5$; $\rho = 1000 \text{ kg/m}^3$

Ambient Temperature : $23.2 \text{ }^\circ\text{C}$; Liquid Temperature : $22.2 \text{ }^\circ\text{C}$

DASY4 Configuration:

- Probe: EX3DV4 - SN3931; ConvF(4.01, 4.01, 4.01); Calibrated: 2016/10/3
- Sensor-Surface: 1.4mm (Mechanical Surface Detection)
- Electronics: DAE3 Sn577; Calibrated: 2016/9/28
- Phantom: SAM_Right; Type: QD000P40CD; Serial: TP:1383
- ;Postprocessing SW: SEMCAD, V1.8 Build 159

Area Scan (101x101x1): Measurement grid: $dx=10\text{mm}$, $dy=10\text{mm}$

Maximum value of SAR (interpolated) = 1.83 mW/g

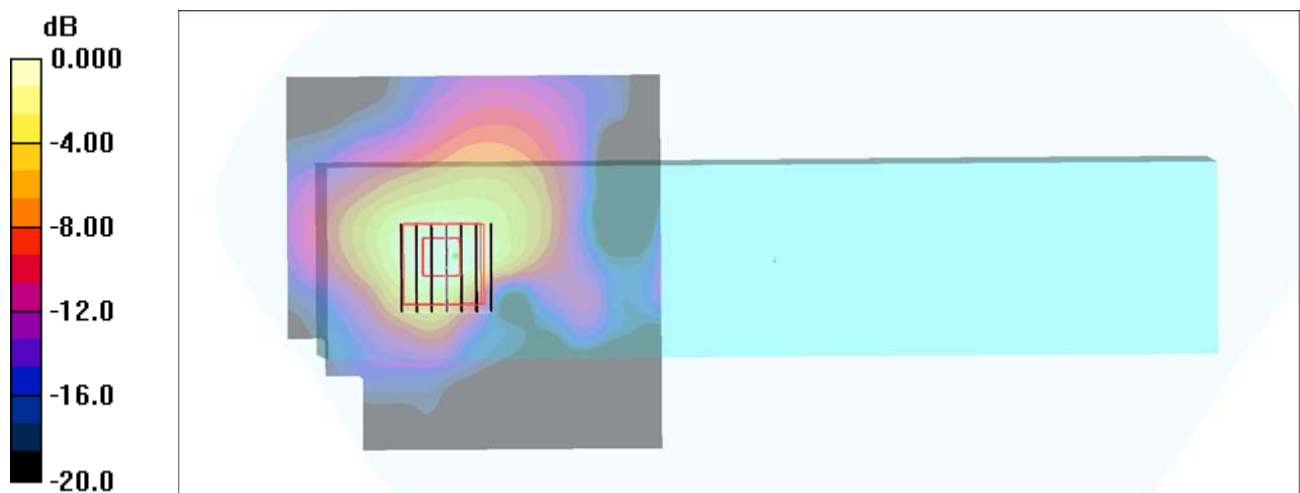
Zoom Scan (7x7x7)/Cube 0: Measurement grid: $dx=4\text{mm}$, $dy=4\text{mm}$, $dz=1.4\text{mm}$

Reference Value = 15.6 V/m ; Power Drift = -0.128 dB

Peak SAR (extrapolated) = 2.87 W/kg

SAR(1 g) = 0.735 mW/g ; SAR(10 g) = 0.265 mW/g

Maximum value of SAR (measured) = 1.71 mW/g



0 dB = 1.71mW/g

#09_WLAN2.4GHz_802.11b 1Mbps_Back_10mm_Ch1_Sample 1

Communication System: 802.11b; Frequency: 2412 MHz; Duty Cycle: 1:1

Medium: MSL_2450_170117 Medium parameters used: $f = 2412$ MHz; $\sigma = 1.956$ S/m; $\epsilon_r = 54.019$; $\rho = 1000$ kg/m³

Ambient Temperature : 23.6 °C; Liquid Temperature : 22.6 °C

DASY5 Configuration:

- Probe: ES3DV3 - SN3270; ConvF(4.28, 4.28, 4.28); Calibrated: 2016/8/26;
- Sensor-Surface: 3mm (Mechanical Surface Detection)
- Electronics: DAE4 Sn778; Calibrated: 2016/5/12
- Phantom: SAM_Left; Type: QD000P40CD; Serial: TP:1644
- Measurement SW: DASY52, Version 52.8 (8); SEMCAD X Version 14.6.10 (7331)

Area Scan (101x111x1): Interpolated grid: dx=1.200 mm, dy=1.200 mm

Maximum value of SAR (interpolated) = 0.0698 W/kg

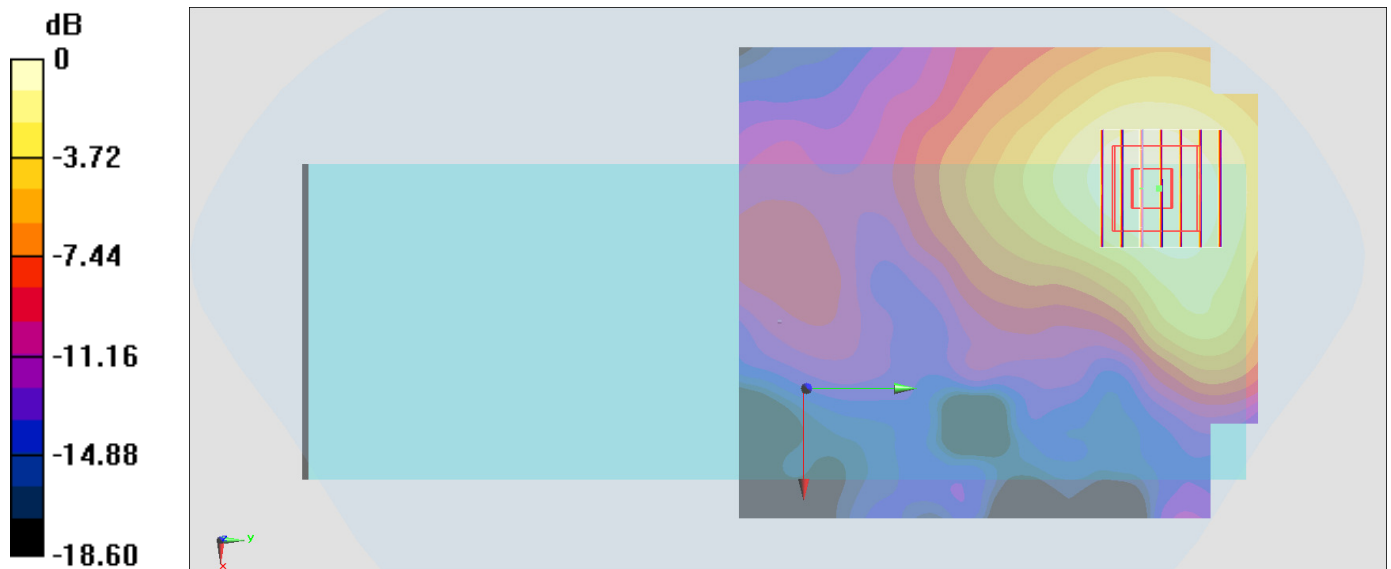
Zoom Scan (7x7x7)/Cube 0: Measurement grid: dx=5mm, dy=5mm, dz=5mm

Reference Value = 5.926 V/m; Power Drift = -0.11 dB

Peak SAR (extrapolated) = 0.0980 W/kg

SAR(1 g) = 0.057 W/kg; SAR(10 g) = 0.034 W/kg

Maximum value of SAR (measured) = 0.0687 W/kg



0 dB = 0.0687 W/kg = -11.63 dBW/kg

#10_WLAN5GHz_802.11a 6Mbps_Back_10mm_Ch52_Sample 2

Communication System: 802.11a ; Frequency: 5260 MHz;Duty Cycle: 1:1.015

Medium: MSL_5G_170119 Medium parameters used: $f = 5260$ MHz; $\sigma = 5.539$ S/m; $\epsilon_r = 47.082$; $\rho = 1000$ kg/m³

Ambient Temperature : 23.1 °C ; Liquid Temperature : 22.1 °C

DASY5 Configuration:

- Probe: EX3DV4 - SN3955; ConvF(4.51, 4.51, 4.51); Calibrated: 2016/11/24;
- Sensor-Surface: 1.4mm (Mechanical Surface Detection)
- Electronics: DAE4 Sn1399; Calibrated: 2016/11/17
- Phantom: SAM-Right; Type: SAM; Serial: 1795
- Measurement SW: DASY52, Version 52.8 (8);SEMCAD X Version 14.6.10 (7331)

Area Scan (101x101x1): Interpolated grid: dx=1.000 mm, dy=1.000 mm

Maximum value of SAR (interpolated) = 0.499 W/kg

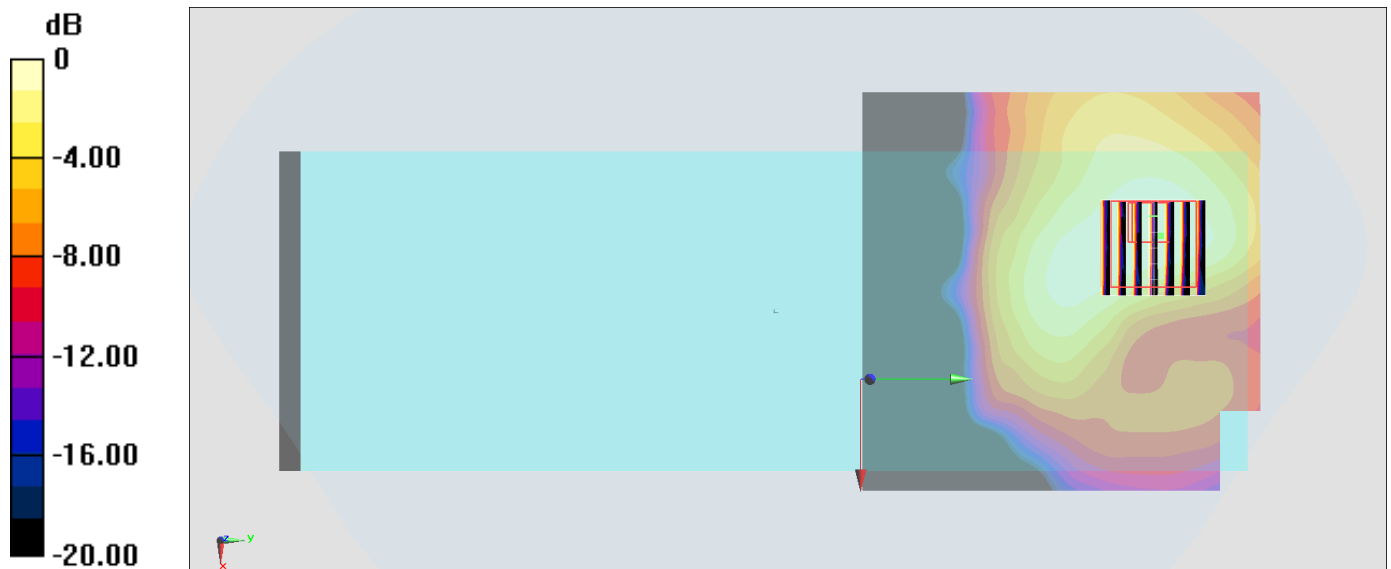
Zoom Scan (7x7x7)/Cube 0: Measurement grid: dx=4mm, dy=4mm, dz=1.4mm

Reference Value = 9.280 V/m; Power Drift = 0.08 dB

Peak SAR (extrapolated) = 0.752 W/kg

SAR(1 g) = 0.212 W/kg; SAR(10 g) = 0.095 W/kg

Maximum value of SAR (measured) = 0.496 W/kg



0 dB = 0.496 W/kg = -3.05 dBW/kg

#11_WLAN5GHz_802.11a_6Mbps_Back_0mm_Ch140;Holster_Sample 1

Communication System: 802.11a ; Frequency: 5700 MHz;Duty Cycle: 1:1.015

Medium: MSL_5G_170120 Medium parameters used: $f = 5700$ MHz; $\sigma = 6.098$ S/m; $\epsilon_r = 46.203$; $\rho = 1000$ kg/m³

Bn c j f ou U f n q f s o u v s p É 2.3 W 4 M r v j e ! U f n q f s o u v s p É 2.3 W

DASY5 Configuration:

- Probe: EX3DV4 - SN3955; ConvF(3.91, 3.91, 3.91); Calibrated: 2016/11/24;
- Sensor-Surface: 1.4mm (Mechanical Surface Detection)
- Electronics: DAE4 Sn1399; Calibrated: 2016/11/17
- Phantom: SAM-Right; Type: SAM; Serial: 1795
- Measurement SW: DASY52, Version 52.8 (8);SEMCAD X Version 14.6.10 (7331)

Area Scan (121x101x1): Interpolated grid: dx=1.000 mm, dy=1.000 mm

Maximum value of SAR (interpolated) = 0.581 W/kg

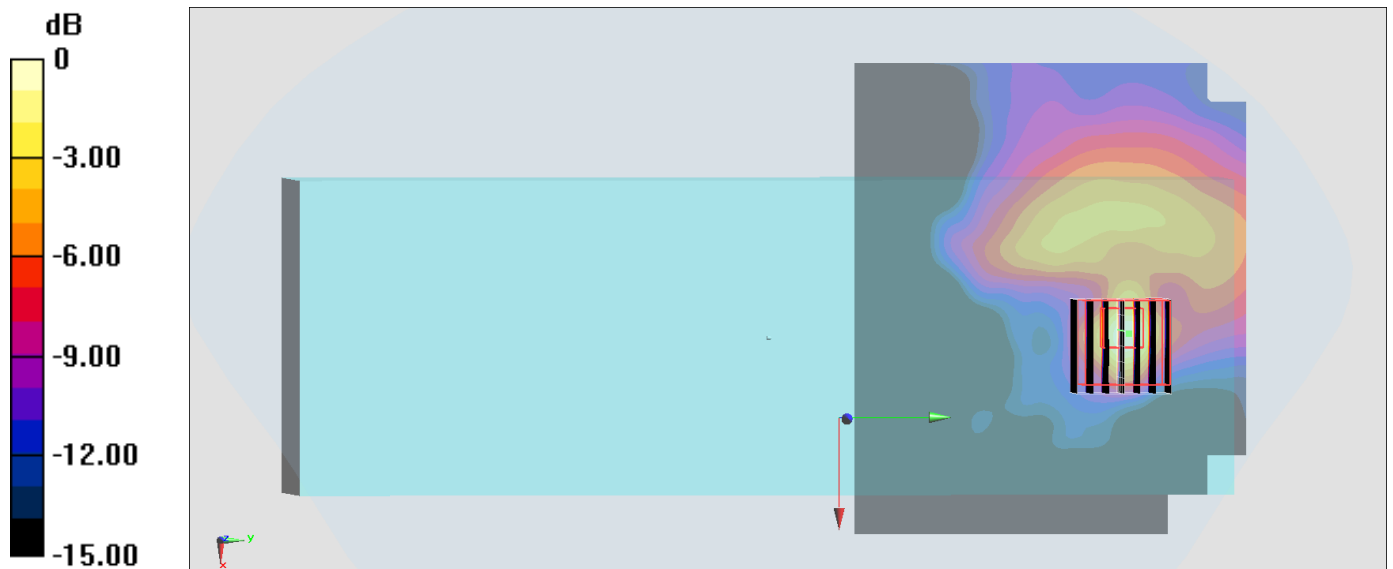
Zoom Scan (7x7x7)/Cube 0: Measurement grid: dx=4mm, dy=4mm, dz=1.4mm

Reference Value = 7.192 V/m; Power Drift = 0.03 dB

Peak SAR (extrapolated) = 1.73 W/kg

SAR(1 g) = 0.210 W/kg; SAR(10 g) = 0.059 W/kg

Maximum value of SAR (measured) = 0.565 W/kg



0 dB = 0.565 W/kg = -2.48 dBW/kg

#12_WLAN5GHz_802.11a 6Mbps_Back_0mm_Ch165;Holster_Sample 1

Communication System: 802.11a; Frequency: 5825 MHz; Duty Cycle: 1:1.015

Medium: MSL_5G_170120 Medium parameters used: $f = 5825$ MHz; $\sigma = 6.263$ S/m; $\epsilon_r = 45.984$; $\rho = 1000$ kg/m³

Ambient Temperature : 23.3 °C ; Liquid Temperature : 22.3 °C

DASY5 Configuration:

- Probe: EX3DV4 - SN3955; ConvF(4.12, 4.12, 4.12); Calibrated: 2016/11/24;
- Sensor-Surface: 1.4mm (Mechanical Surface Detection)
- Electronics: DAE4 Sn1399; Calibrated: 2016/11/17
- Phantom: SAM-Right; Type: SAM; Serial: 1795
- Measurement SW: DASY52, Version 52.8 (8); SEMCAD X Version 14.6.10 (7331)

Area Scan (121x101x1): Interpolated grid: dx=1.000 mm, dy=1.000 mm

Maximum value of SAR (interpolated) = 0.548 W/kg

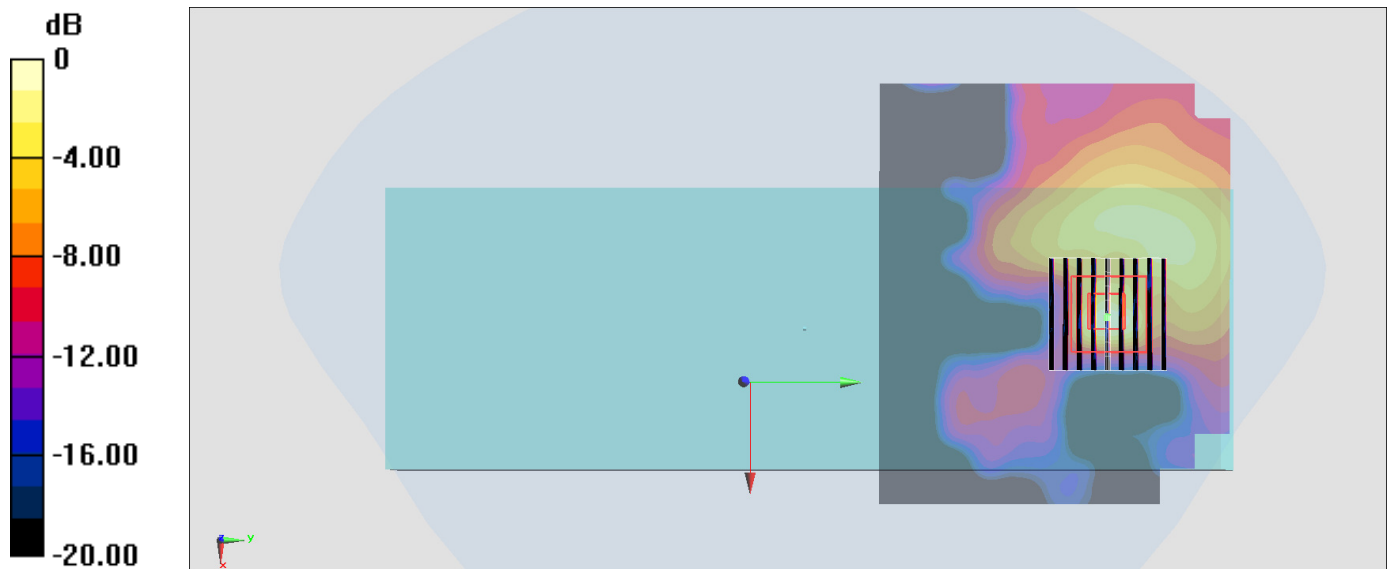
Zoom Scan (9x9x7)/Cube 0: Measurement grid: dx=4mm, dy=4mm, dz=1.4mm

Reference Value = 8.674 V/m; Power Drift = 0.13 dB

Peak SAR (extrapolated) = 2.11 W/kg

SAR(1 g) = 0.220 W/kg; SAR(10 g) = 0.054 W/kg

Maximum value of SAR (measured) = 0.569 W/kg



0 dB = 0.569 W/kg = -2.45 dBW/kg

#13_Bluetooth_1Mbps_Back_10mm_Ch39_Sample 4

Communication System: Bluetooth; Frequency: 2441 MHz; Duty Cycle: 1:1.297

Medium: MSL_2450_170117 Medium parameters used: $f = 2441$ MHz; $\sigma = 1.996$ S/m; $\epsilon_r = 53.905$; $\rho = 1000$ kg/m³

Ambient Temperature : 23.6 °C ; Liquid Temperature : 22.6 °C

DASY5 Configuration:

- Probe: ES3DV3 - SN3270; ConvF(4.28, 4.28, 4.28); Calibrated: 2016/8/26;
- Sensor-Surface: 3mm (Mechanical Surface Detection)
- Electronics: DAE4 Sn778; Calibrated: 2016/5/12
- Phantom: SAM_Left; Type: QD000P40CD; Serial: TP:1644
- Measurement SW: DASY52, Version 52.8 (8); SEMCAD X Version 14.6.10 (7331)

Area Scan (91x81x1): Interpolated grid: dx=1.200 mm, dy=1.200 mm

Maximum value of SAR (interpolated) = 0.0108 W/kg

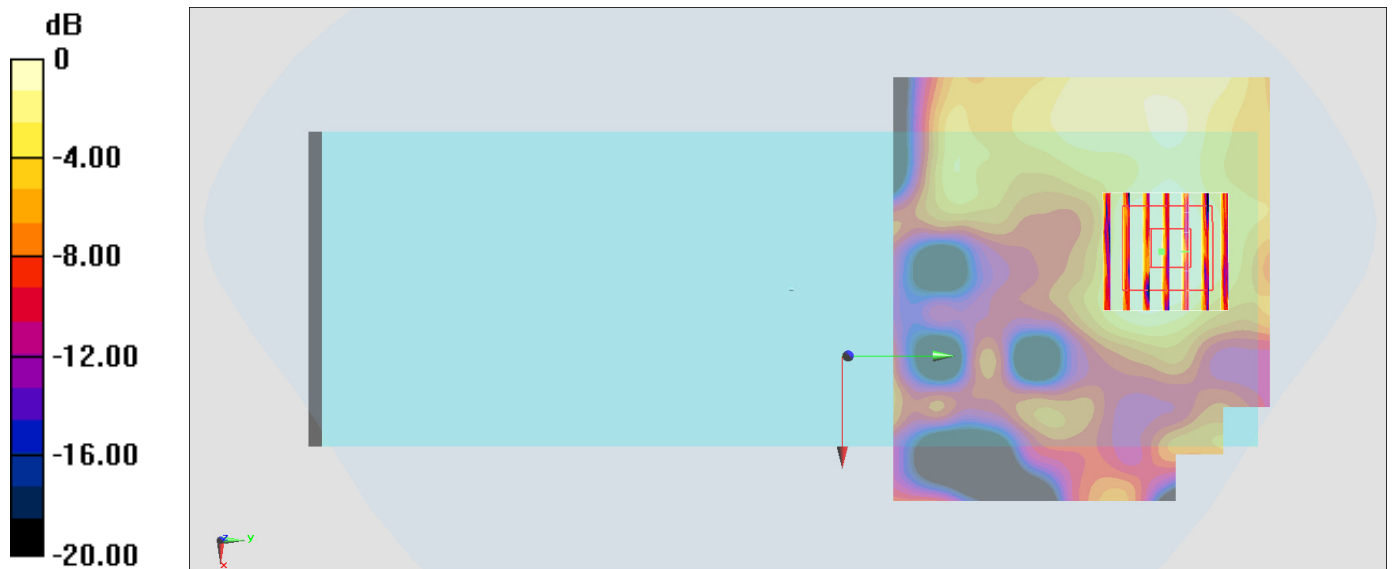
Zoom Scan (7x7x7)/Cube 0: Measurement grid: dx=5mm, dy=5mm, dz=5mm

Reference Value = 1.531 V/m; Power Drift = -0.14 dB

Peak SAR (extrapolated) = 0.0110 W/kg

SAR(1 g) = 0.00573 W/kg; SAR(10 g) = 0.00287 W/kg

Maximum value of SAR (measured) = 0.00791 W/kg



0 dB = 0.00791 W/kg = -21.02 dBW/kg