

**Measurement Report for Device
Device Under Test Properties**

Model, Manufacturer	Dimensions [mm]	Software Version	DUT Type
Device,	70.0 x 50.0 x 8.0	3.2.0.1840	5G Verification Source

Exposure Conditions

Phantom Section	Position, Test Distance [mm]	Frequency [MHz]	Conversion Factor
5G	Front, 10.00	10000.0	1.0

Hardware Setup

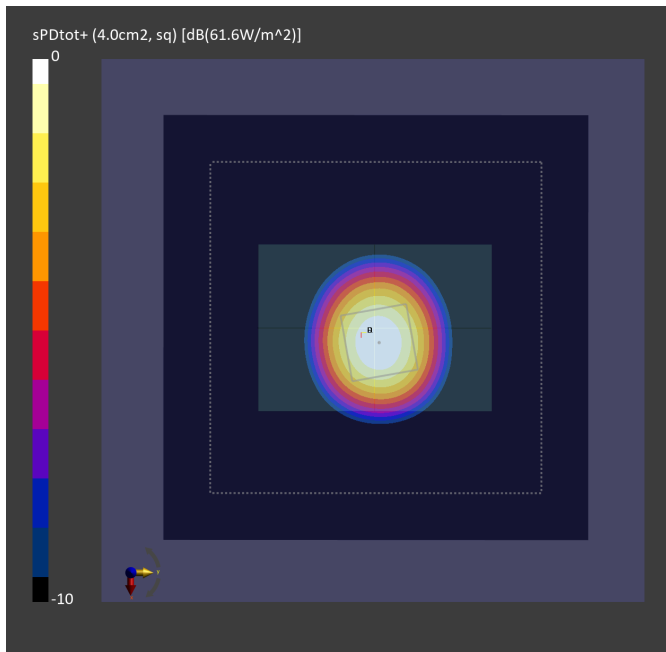
Phantom	Medium	Probe, Calibration Date	DAE, Calibration Date
mmWave - 1044	Air -	EUmmWV3 - SN9424_F1-55GHz, 2024-03-12	DAE4 Sn1424, 2023-12-07

Scans Setup

Scan Type	5G Scan
Grid Extents [mm]	120.0 x 120.0
Grid Steps [lambda]	0.25 x 0.25
Sensor Surface [mm]	10.0

Measurement Results

Date	2024-07-05
Avg. Area [cm ²]	4.00
psPDn+ [W/m ²]	61.4
psPDtot+ [W/m ²]	61.6
H _{max} [A/m]	0.436
E _{max} [V/m]	164
max _(stot) [W/m ²]	69.3
Power Drift [dB]	0.10
IPDn	112



Measurement Report for Device
Device Under Test Properties

Model, Manufacturer	Dimensions [mm]	Software Version	DUT Type
Device,	70.0 x 50.0 x 8.0	3.2.0.1840	5G Verification Source

Exposure Conditions

Phantom Section	Position, Test Distance [mm]	Frequency [MHz]	Conversion Factor
5G	FRONT, 10.00	10000.0	1.0

Hardware Setup

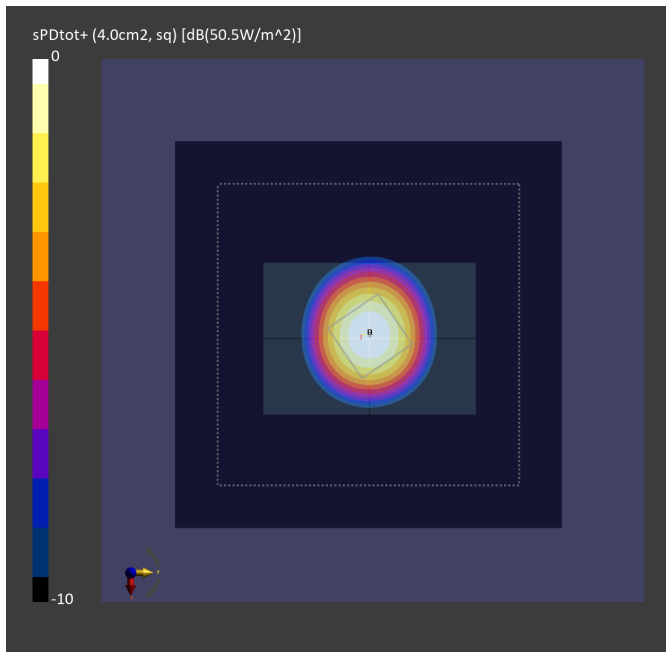
Phantom	Medium	Probe, Calibration Date	DAE, Calibration Date
mmWave - 1044	Air -	EUmmWV3 - SN9424_F1-55GHz, 2024-03-12	DAE4 Sn1694, 2023-11-17

Scans Setup

Scan Type	5G Scan
Grid Extents [mm]	120.0 x 120.0
Grid Steps [lambda]	0.25 x 0.25
Sensor Surface [mm]	10.0

Measurement Results

Date	2024-07-08
Avg. Area [cm ²]	4.00
psPDn+ [W/m ²]	50.4
psPDtot+ [W/m ²]	50.5
H _{max} [A/m]	0.383
E _{max} [V/m]	148
max _(stot) [W/m ²]	56.1
Power Drift [dB]	0.01
IPDn	90.4



Measurement Report for Device

Device Under Test Properties

Model, Manufacturer	Dimensions [mm]	Software Version	DUT Type
Device,	70.0 x 50.0 x 8.0	3.2.0.1840	5G Verification Source

Exposure Conditions

Phantom Section	Position, Test Distance [mm]	Frequency [MHz]	Conversion Factor
5G	FRONT, 10.00	10000.0	1.0

Hardware Setup

Phantom	Medium	Probe, Calibration Date	DAE, Calibration Date
mmWave - 1109	Air -	EUmmWV4 - SN9441_F1-55GHz, 2023-11-17	DAE4 Sn376, 2023-09-14

Scans Setup

Scan Type	5G Scan
Grid Extents [mm]	120.0 x 120.0
Grid Steps [lambda]	0.25 x 0.25
Sensor Surface [mm]	10.0

Measurement Results

Date	2024-07-29
Avg. Area [cm ²]	4.00
psPDn+ [W/m ²]	61.5
psPDtot+ [W/m ²]	61.6
H _{max} [A/m]	0.432
E _{max} [V/m]	163
max _(Stot) [W/m ²]	70.0
Power Drift [dB]	0.01
IPDn	117

