

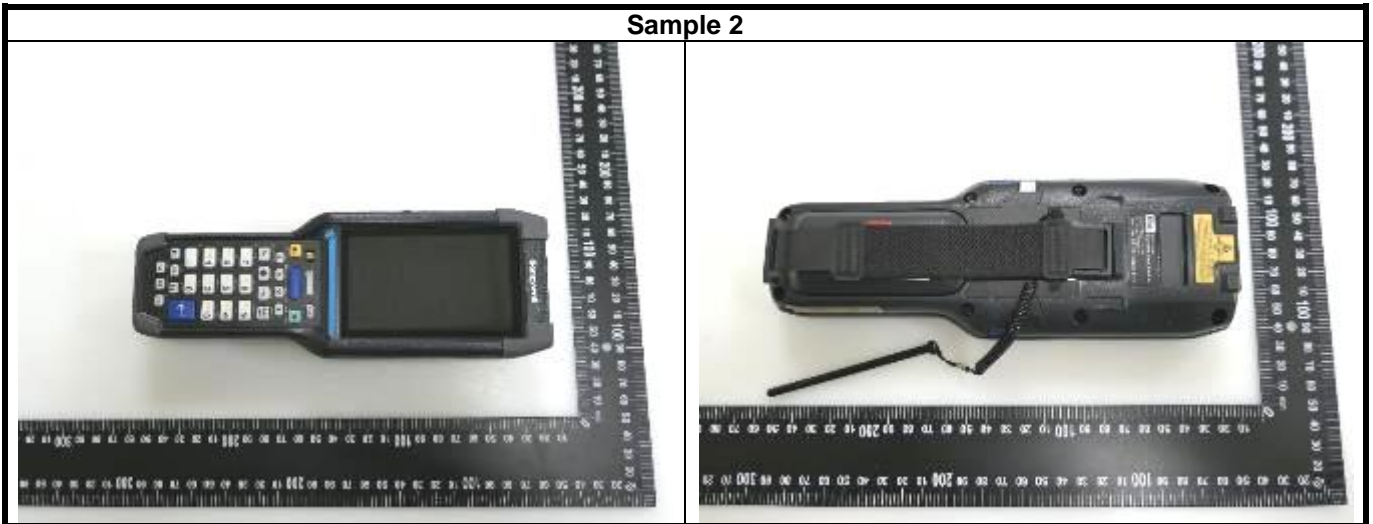
FCC SAR Test Report

<Photographs of EUT>

Sample 1



Sample 2

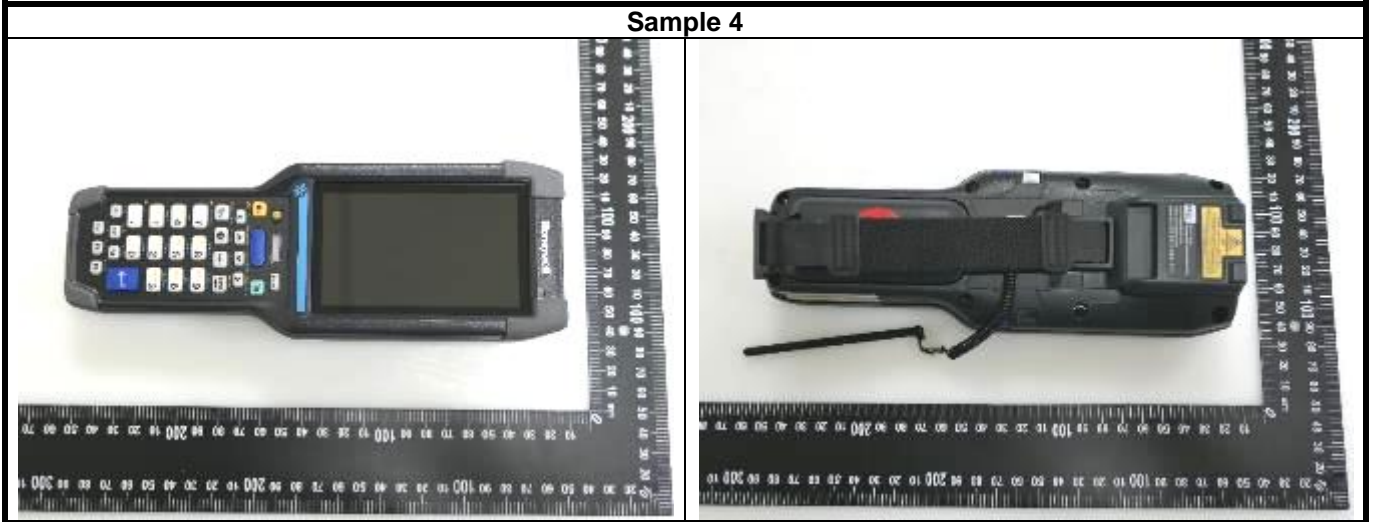


Sample 3

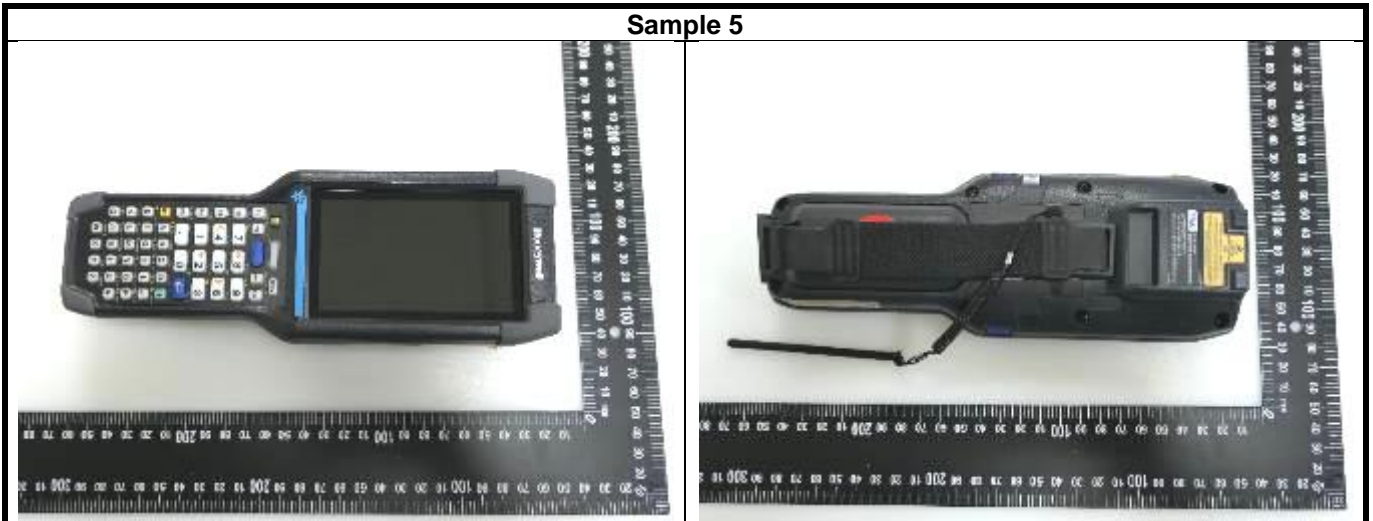


FCC SAR Test Report

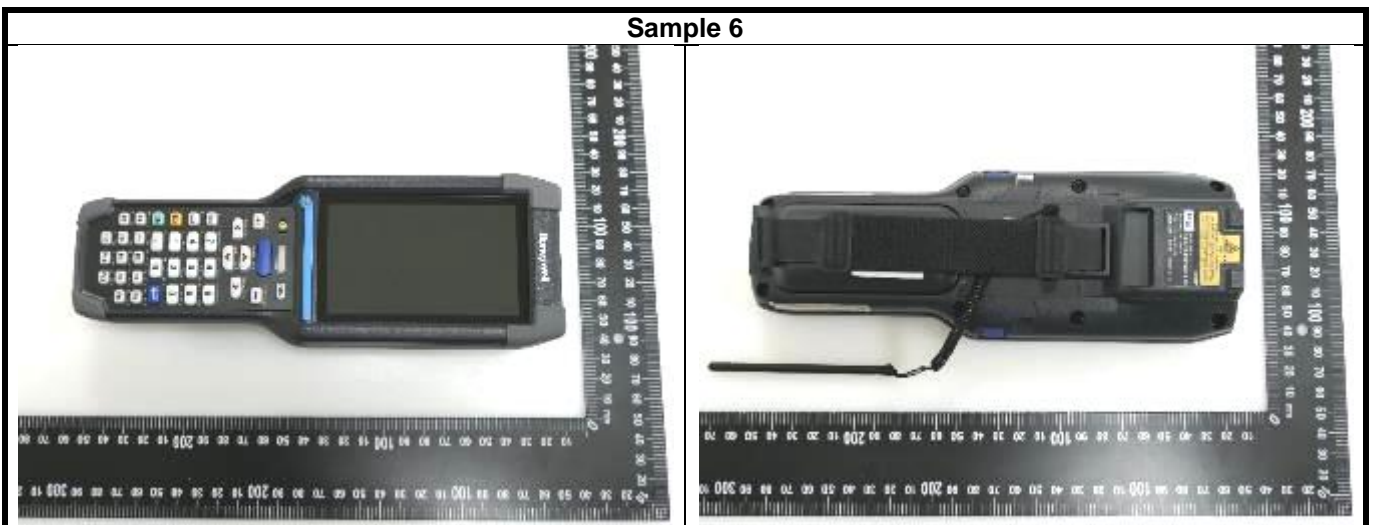
Sample 4



Sample 5

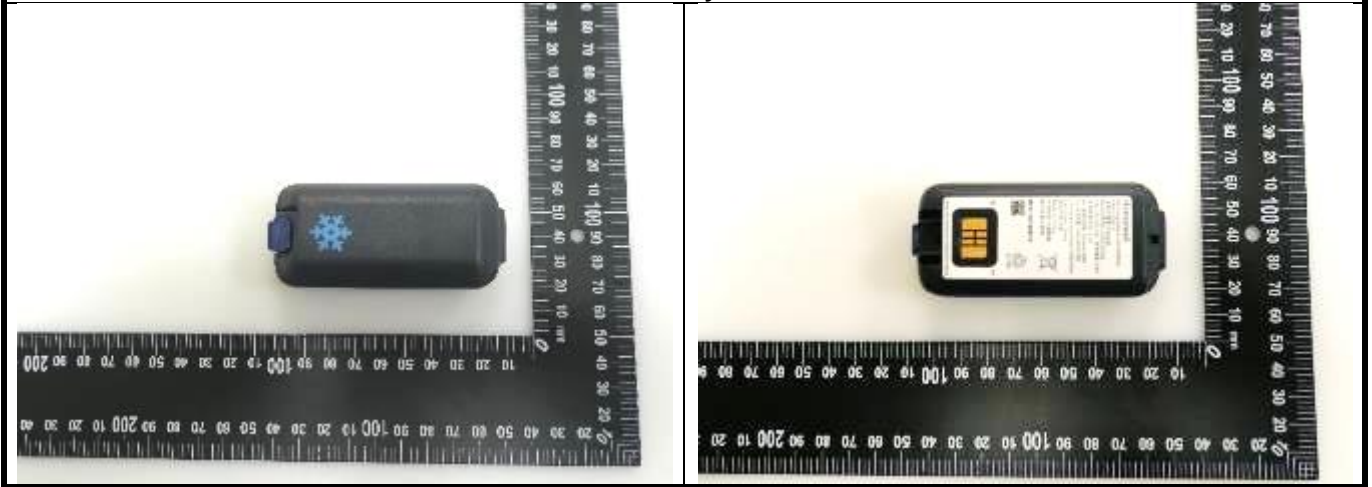


Sample 6

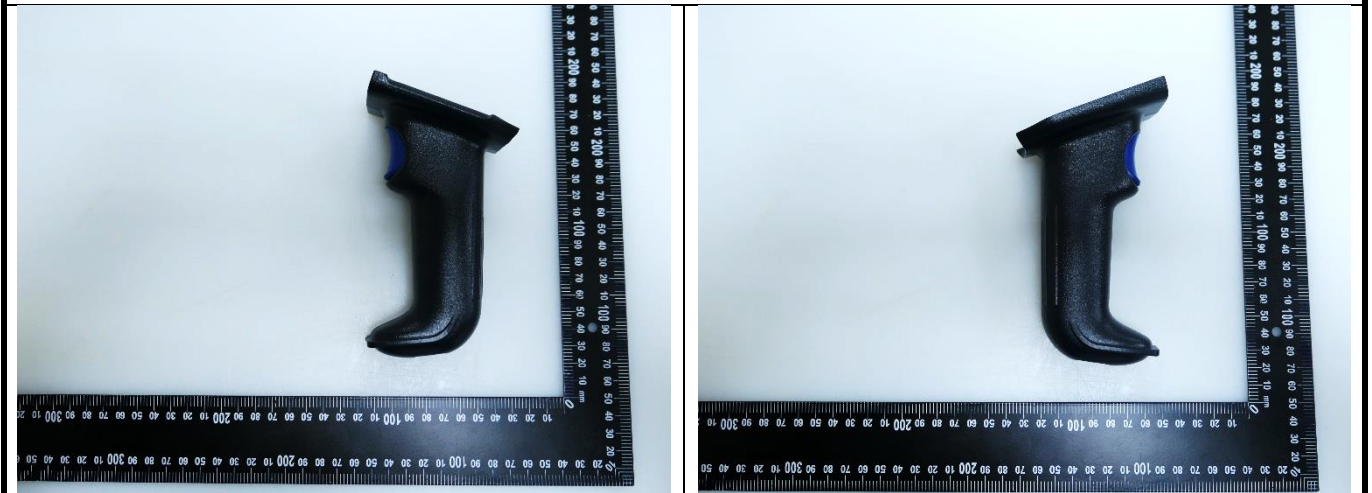


FCC SAR Test Report

Battery 4

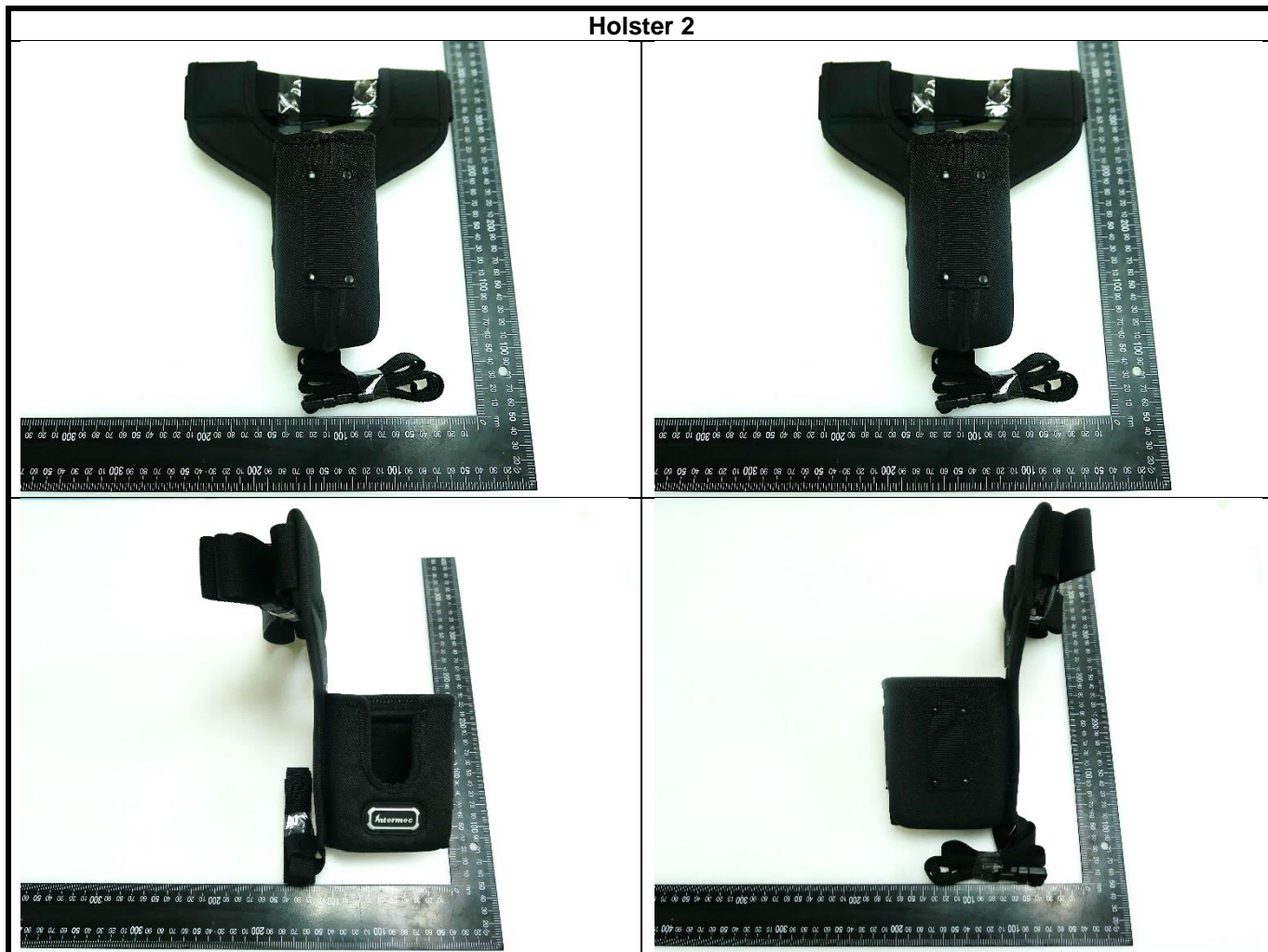


Scan Handle

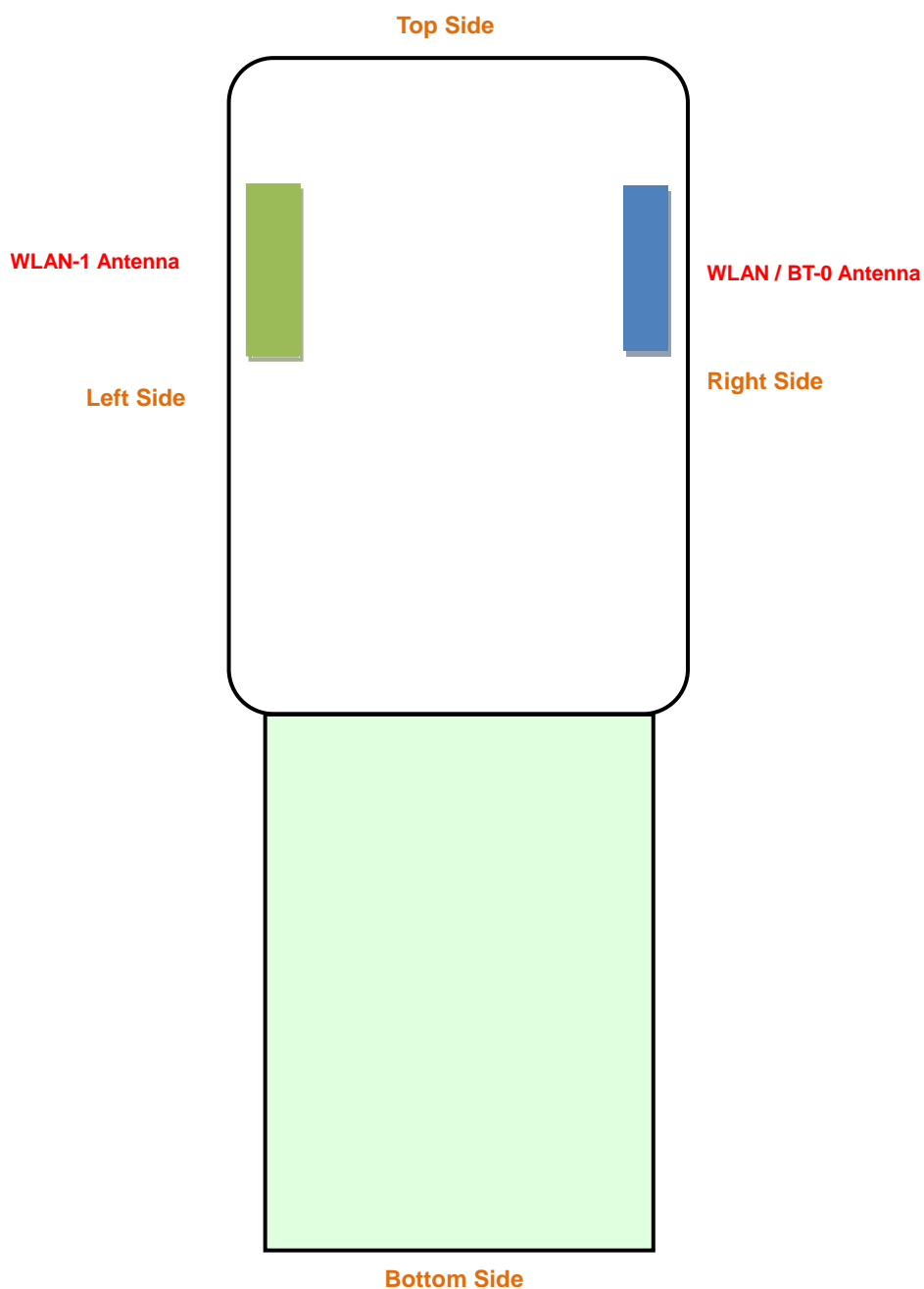


FCC SAR Test Report

Holster 2



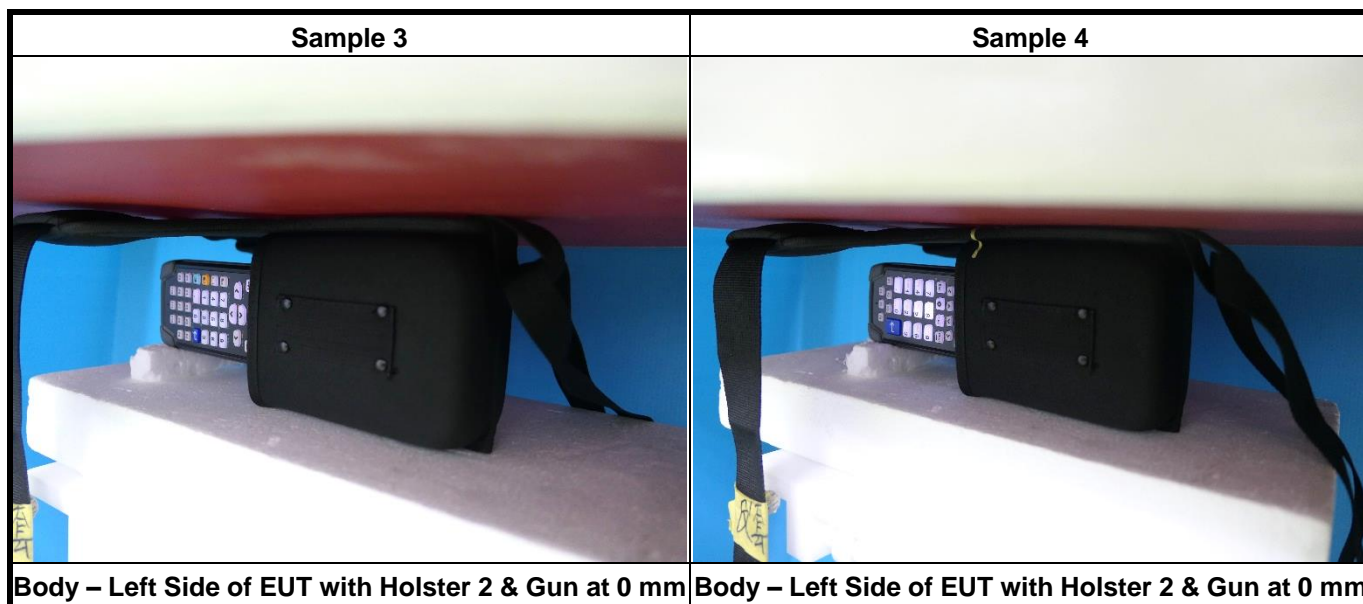
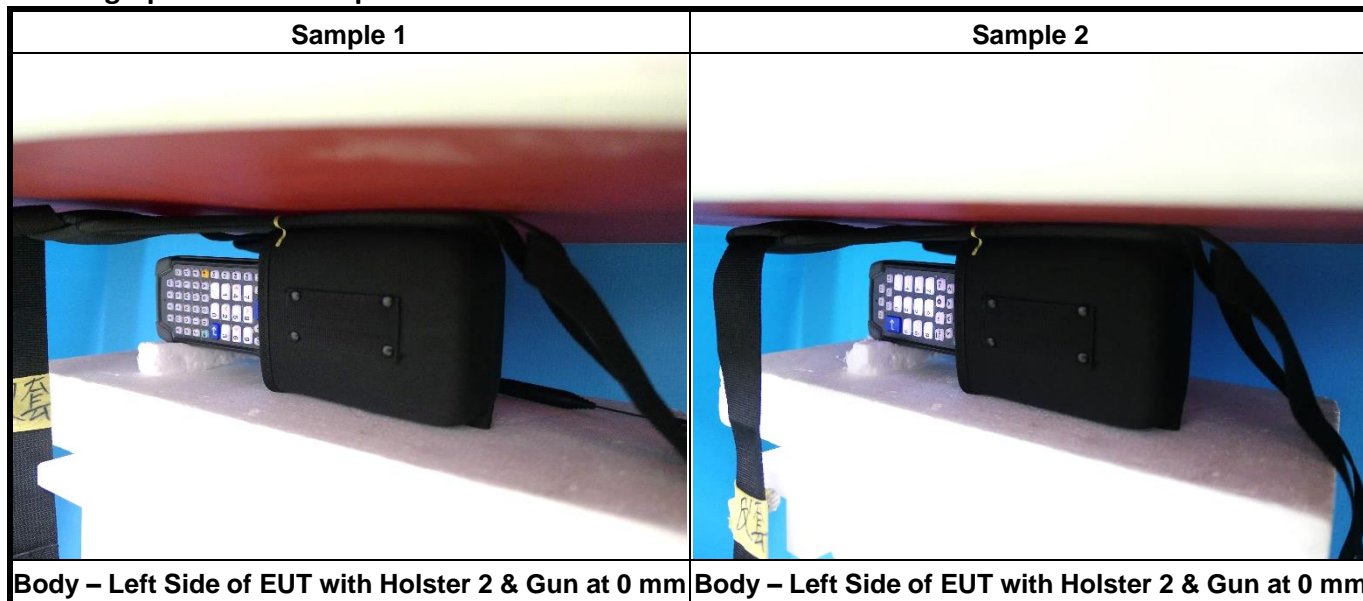
<Antenna Location>





The separation distance for antenna to edge:

Antenna	To Top Side (mm)	To Bottom Side (mm)	To Left Side (mm)	To Right Side (mm)
BT / WLAN Ant-0	18.5	157	61.85	2.95
WLAN Ant-1	18.5	157	2.95	61.85

<Photographs of SAR Setup>



FCC SAR Test Report

Sample 5	Sample 6
	
Body – Left Side of EUT with Holster 2 & Gun at 0 mm	Body – Left Side of EUT with Holster 2 & Gun at 0 mm