

Variant FCC SAR Test Report

Report No. : SA190111C05A
Applicant : Honeywell International Inc.
Address : 9680 Old Bailes Road, Fort Mill, SC 29707 USA
Product : Mobile computer
FCC ID : HD5-CK65L0N
Brand : Honeywell
Model No. : CK65L0N
Standards : FCC 47 CFR Part 2 (2.1093), IEEE C95.1:1992, IEEE Std 1528:2013
 KDB 865664 D01 v01r04, KDB 865664 D02 v01r02
 KDB 248227 D01 v02r02, KDB 447498 D01 v06
Sample Received Date : Oct. 04, 2019
Date of Testing : Oct. 09, 2019 ~ Oct. 21, 2019
Lab Address : No. 47-2, 14th Ling, Chia Pau Vil., Lin Kou Dist., New Taipei City, Taiwan
Test Location : No. 19, Hwa Ya 2nd Rd, Wen Hwa Vil, Kwei Shan Dist., Taoyuan City 33383, Taiwan

CERTIFICATION: The above equipment have been tested by **Bureau Veritas Consumer Products Services (H.K.) Ltd., Taoyuan Branch – Lin Kou Laboratories**, and found compliance with the requirement of the above standards. The test record, data evaluation & Equipment Under Test (EUT) configurations represented herein are true and accurate accounts of the measurements of the sample’s SAR characteristics under the conditions specified in this report. It should not be reproduced except in full, without the written approval of our laboratory. The client should not use it to claim product certification, approval, or endorsement by TAF or any government agencies.

This report is issued as a supplementary report to BV CPS report no.: SA190111C05. The differences compared with original report is listed as section 2 Note 1 on page 5.

Prepared By : Shelly Hsueh
 Shelly Hsueh / Specialist

Approved By : Gordon Lin
 Gordon Lin / Manager



FCC Accredited No.: TW0003

This report is for your exclusive use. Any copying or replication of this report to or for any other person or entity, or use of our name or trademark, is permitted only with our prior written permission. This report sets forth our findings solely with respect to the test samples identified herein. The results set forth in this report are not indicative or representative of the quality or characteristics of the lot from which a test sample was taken or any similar or identical product unless specifically and expressly noted. Our report includes all of the tests requested by you and the results thereof based upon the information that you provided to us. You have 60 days from date of issuance of this report to notify us of any material error or omission caused by our negligence, provided, however, that such notice shall be in writing and shall specifically address the issue you wish to raise. A failure to raise such issue within the prescribed time shall constitute your unqualified acceptance of the completeness of this report, the tests conducted and the correctness of the report contents. Unless specific mention, the uncertainty of measurement has been explicitly taken into account to declare the compliance or non-compliance to the specification.

Table of Contents

Release Control Record	3
1. Summary of Maximum SAR Value	4
2. Description of Equipment Under Test	5
3. SAR Measurement System	7
3.1 Definition of Specific Absorption Rate (SAR)	7
3.2 SPEAG DASY6 System	7
3.2.1 Robot	8
3.2.2 Probes	9
3.2.3 Data Acquisition Electronics (DAE)	9
3.2.4 Phantoms	9
3.2.5 Device Holder	10
3.2.6 System Validation Dipoles	10
3.2.7 Tissue Simulating Liquids	11
3.3 SAR System Verification	13
3.4 SAR Measurement Procedure	14
3.4.1 Area & Zoom Scan Procedure	14
3.4.2 Volume Scan Procedure	14
3.4.3 Power Drift Monitoring	15
3.4.4 Spatial Peak SAR Evaluation	15
3.4.5 SAR Averaged Methods	15
4. SAR Measurement Evaluation	16
4.1 EUT Configuration and Setting	16
4.2 EUT Testing Position	18
4.3 Tissue Verification	19
4.4 System Validation	19
4.5 System Verification	20
4.6 Maximum Output Power	21
4.6.1 Maximum Target Conducted Power	21
4.6.2 Measured Conducted Power Result	22
4.7 SAR Testing Results	23
4.7.1 SAR Test Reduction Considerations	23
4.7.2 SAR Results for Body Exposure Condition (Separation Distance is 0 mm Gap)	24
4.7.3 SAR Measurement Variability	26
4.7.4 Simultaneous Multi-band Transmission Evaluation	26
5. Calibration of Test Equipment	27
6. Measurement Uncertainty	28
7. Information of the Testing Laboratories	29
Appendix A. SAR Plots of System Verification	
Appendix B. SAR Plots of SAR Measurement	
Appendix C. Calibration Certificate for Probe and Dipole	
Appendix D. Photographs of EUT and Setup	



Release Control Record

Report No.	Reason for Change	Date Issued
SA190111C05A	Initial release	Nov. 04, 2019

1. Summary of Maximum SAR Value

Equipment Class	Mode	Highest SAR-1g Body (W/kg)					
		Sample-1	Sample-2	Sample-3	Sample-4	Sample-5	Sample-6
DTS	2.4G WLAN	0.50	0.49	0.27	0.53	0.42	0.39
NII	5.2G WLAN	0.20	0.20	0.27	0.22	0.26	0.20
	5.6G WLAN	0.60	0.52	0.70	0.96	0.60	0.80
	5.8G WLAN	0.82	0.74	0.95	0.77	1.06	1.02
DSS	Bluetooth	0.01	0.01	0.00	0.01	0.01	0.01
DXX	NFC	N/A	N/A	N/A	N/A	N/A	N/A

Note:

- The SAR criteria (**Head & Body: SAR-1g 1.6 W/kg, and Extremity: SAR-10g 4.0 W/kg**) for general population / uncontrolled exposure is specified in FCC 47 CFR part 2 (2.1093) and ANSI/IEEE C95.1-1992.

2. Description of Equipment Under Test

EUT Type	Mobile computer
FCC ID	HD5-CK65L0N
Brand Name	Honeywell
Model Name	CK65L0N
HW Version	3.1
HW P/N	DVT
SW Version	01.03.00.0686
SW P/N	88.00.00-DEBUG-(0327)
EUT Configurations	Sample 1: Key type - Alpha, Scanner - GEN8, w/o Camera, NFC Sample 2: Key type - Num 0, Scanner - GEN8, w/o Camera, NFC Sample 3: Key type - Num, Scanner - GEN8, w/o Camera, NFC Sample 4: Key type - Num 0, Scanner - EX20, w/o Camera, NFC Sample 5: Key type - Alpha, Scanner - EX20, w/o Camera, NFC Sample 6: Key type - Num, Scanner - EX20, w/o Camera, NFC
Tx Frequency Bands (Unit: MHz)	WLAN : 2412 ~ 2462, 5180 ~ 5240, 5260 ~ 5320, 5500 ~ 5720, 5745 ~ 5825 Bluetooth : 2402 ~ 2480 NFC : 13.56
Uplink Modulations	802.11b : DSSS 802.11a/g/n/ac : OFDM Bluetooth : GFSK, $\pi/4$ -DQPSK, 8-DPSK NFC : ASK
Maximum Tune-up Conducted Power (Unit: dBm)	Please refer to section 4.6.1 of this report
Antenna Type	FPC Antenna
EUT Stage	Engineering Sample

Note:

1. This report is issued as a supplementary report to BV CPS report no.: SA190111C05. The differences compared with original report is listed as below. Therefore, the EUT was verified and recorded in this report.

No.	Change Item
1	Add new scanner Gen8, the Gen8 is the next generation of the N6703 scanner.
2.	Add Battery 4 for Cold Storage SKU
3.	Add cold storage
4.	Add NFC matching optimize
5.	Heater function
6.	Non-camera
7.	Revising Tune-up Power of WLAN 2.4G 802.11g/n/ac for Body mode

2. The above EUT information is declared by manufacturer and for more detailed features description please refers to the manufacturer's specifications or User's Manual.

List of Accessory:

Battery 4	Brand Name	Honeywell
	Model Name	CK65-BTCS
	Power Rating	5200mAh, 18.7 Wh
	Type	Li-ion

FCC SAR Test Report

Accessory for test only (Not sale together)

Battery 1	Brand Name	Intermec Technologies Corporation
	Model Name	AB18
	Power Rating	3.7Vdc, 5.1Ah, 18.9Wh
	Type	Li-ion
Battery 2	Brand Name	Intermec Technologies Corporation
	Model Name	1001AB01
	Power Rating	3.7Vdc, 5.2Ah, 19.2Wh
	Type	Li-ion
Battery 3	Brand Name	Intermec Technologies Corporation
	Model Name	AB17
	Power Rating	3.7Vdc, 2Ah, 7.4Wh
	Type	Li-ion
Holster 1 (w/ scan handle)	Brand Name	Intermec
	Part No.	815-088-001
Holster 2 (w/o scan handle)	Brand Name	Intermec
	Part No.	815-087-001
Scan Handle	Brand Name	Intermec
	Part No.	203-879-003

3. SAR Measurement System

3.1 Definition of Specific Absorption Rate (SAR)

SAR is related to the rate at which energy is absorbed per unit mass in an object exposed to a radio field. The SAR distribution in a biological body is complicated and is usually carried out by experimental techniques or numerical modeling. The standard recommends limits for two tiers of groups, occupational/controlled and general population/uncontrolled, based on a person's awareness and ability to exercise control over his or her exposure. In general, occupational/controlled exposure limits are higher than the limits for general population/uncontrolled.

The SAR definition is the time derivative (rate) of the incremental energy (dW) absorbed by (dissipated in) an incremental mass (dm) contained in a volume element (dv) of a given density (ρ). The equation description is as below:

$$\text{SAR} = \frac{d}{dt} \left(\frac{dW}{dm} \right) = \frac{d}{dt} \left(\frac{dW}{\rho dv} \right)$$

SAR is expressed in units of Watts per kilogram (W/kg)

SAR measurement can be related to the electrical field in the tissue by

$$\text{SAR} = \frac{\sigma |E|^2}{\rho}$$

Where: σ is the conductivity of the tissue, ρ is the mass density of the tissue and E is the RMS electrical field strength.

3.2 SPEAG DASY6 System

DASY6 system consists of high precision robot, probe alignment sensor, phantom, robot controller, controlled measurement server and near-field probe. The robot includes six axes that can move to the precision position of the DASY6 software defined. The DASY6 software can define the area that is detected by the probe. The robot is connected to controlled box. Controlled measurement server is connected to the controlled robot box. The DAE includes amplifier, signal multiplexing, AD converter, offset measurement and surface detection. It is connected to the Electro-optical coupler (ECO). The ECO performs the conversion from the optical into digital electric signal of the DAE and transfers data to the PC.

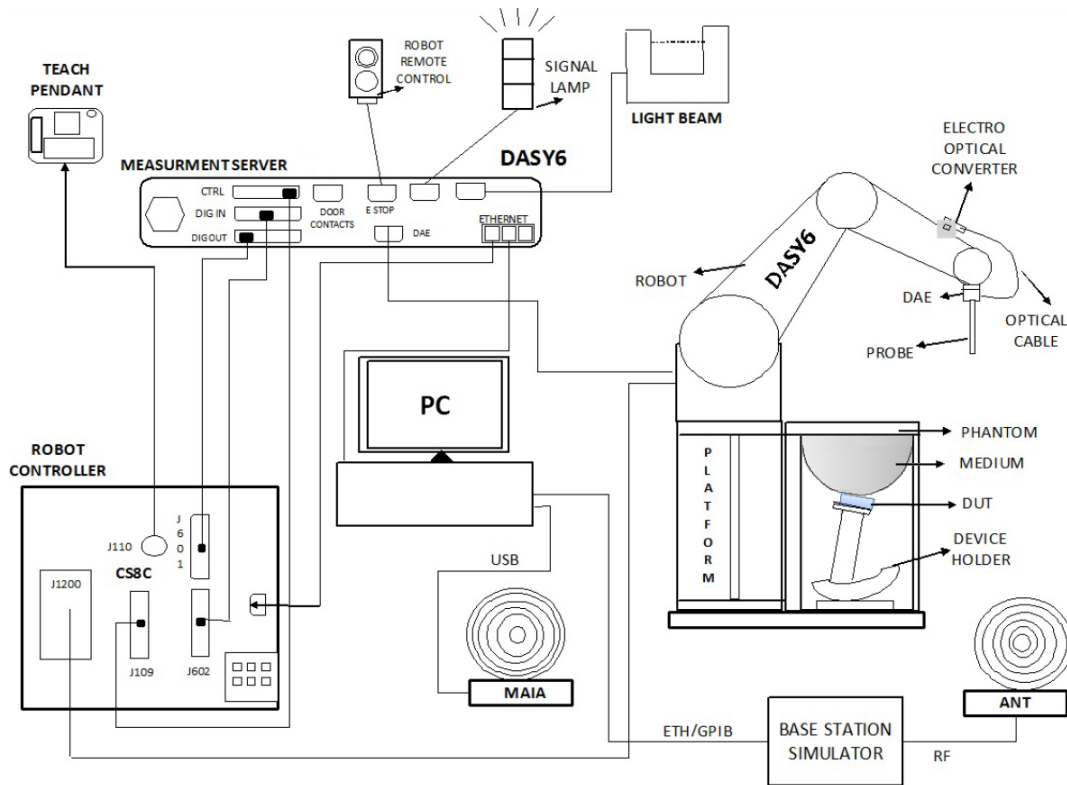


Fig-3.1 SPEAG DASY6 System Setup

3.2.1 Robot

The DASY6 systems use the high precision robots from Stäubli SA (France). For the 6-axis controller system, the robot controller version of CS8c from Stäubli is used. The Stäubli robot series have many features that are important for our application:

- High precision (repeatability ± 0.035 mm)
- High reliability (industrial design)
- Jerk-free straight movements
- Low ELF interference (the closed metallic construction shields against motor control fields)




Fig-3.2 SPEAG DASY6 System


FCC SAR Test Report

3.2.2 Probes


The SAR measurement is conducted with the dosimetric probe. The probe is specially designed and calibrated for use in liquid with high permittivity. The dosimetric probe has special calibration in liquid at different frequency.

Model	EX3DV4	
Construction	Symmetrical design with triangular core. Built-in shielding against static charges. PEEK enclosure material (resistant to organic solvents, e.g., DGBE).	
Frequency	4 MHz to 10 GHz Linearity: ± 0.2 dB	
Directivity	± 0.1 dB in TSL (rotation around probe axis) ± 0.3 dB in TSL (rotation normal to probe axis)	
Dynamic Range	10 μ W/g to 100 mW/g Linearity: ± 0.2 dB (noise: typically < 1 μ W/g)	
Dimensions	Overall length: 337 mm (Tip: 20 mm) Tip diameter: 2.5 mm (Body: 12 mm) Typical distance from probe tip to dipole centers: 1 mm	


3.2.3 Data Acquisition Electronics (DAE)

Model	DAE3, DAE4	
Construction	Signal amplifier, multiplexer, A/D converter and control logic. Serial optical link for communication with DASY embedded system (fully remote controlled). Two step probe touch detector for mechanical surface detection and emergency robot stop.	
Measurement Range	-100 to +300 mV (16 bit resolution and two range settings: 4mV, 400mV)	
Input Offset Voltage	< 5 μ V (with auto zero)	
Input Bias Current	< 50 fA	
Dimensions	60 x 60 x 68 mm	


3.2.4 Phantoms

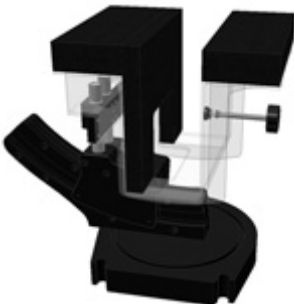
Model	Twin SAM	
Construction	The shell corresponds to the specifications of the Specific Anthropomorphic Mannequin (SAM) phantom defined in IEEE 1528 and IEC 62209-1. It enables the dosimetric evaluation of left and right hand phone usage as well as body mounted usage at the flat phantom region. A cover prevents evaporation of the liquid. Reference markings on the phantom allow the complete setup of all predefined phantom positions and measurement grids by teaching three points with the robot.	
Material	Vinylester, glass fiber reinforced (VE-GF)	
Shell Thickness	2 ± 0.2 mm (6 ± 0.2 mm at ear point)	
Dimensions	Length: 1000 mm Width: 500 mm Height: adjustable feet	
Filling Volume	approx. 25 liters	

FCC SAR Test Report


Model	ELI	
Construction	Phantom for compliance testing of handheld and body-mounted wireless devices in the frequency range of 30 MHz to 6 GHz. ELI is fully compatible with the IEC 62209-2 standard and all known tissue simulating liquids. ELI has been optimized regarding its performance and can be integrated into our standard phantom tables. A cover prevents evaporation of the liquid. Reference markings on the phantom allow installation of the complete setup, including all predefined phantom positions and measurement grids, by teaching three points. The phantom is compatible with all SPEAG dosimetric probes and dipoles.	
Material	Vinylester, glass fiber reinforced (VE-GF)	
Shell Thickness	2.0 ± 0.2 mm (bottom plate)	
Dimensions	Major axis: 600 mm Minor axis: 400 mm	
Filling Volume	approx. 30 liters	

3.2.5 Device Holder

Model	Mounting Device	
Construction	In combination with the Twin SAM Phantom or ELI4, the Mounting Device enables the rotation of the mounted transmitter device in spherical coordinates. Rotation point is the ear opening point. Transmitter devices can be easily and accurately positioned according to IEC, IEEE, FCC or other specifications. The device holder can be locked for positioning at different phantom sections (left head, right head, flat).	
Material	POM	

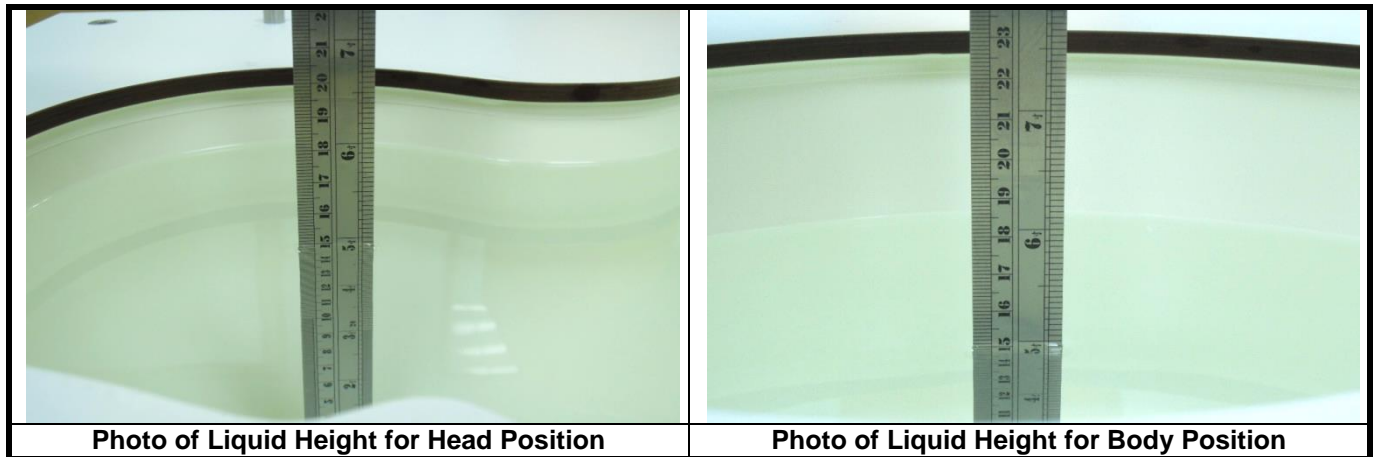
Model	Laptop Extensions Kit	
Construction	Simple but effective and easy-to-use extension for Mounting Device that facilitates the testing of larger devices according to IEC 62209-2 (e.g., laptops, cameras, etc.). It is lightweight and fits easily on the upper part of the Mounting Device in place of the phone positioner.	
Material	POM, Acrylic glass, Foam	

3.2.6 System Validation Dipoles

Model	D-Serial	
Construction	Symmetrical dipole with 1/4 balun. Enables measurement of feedpoint impedance with NWA. Matched for use near flat phantoms filled with tissue simulating solutions.	
Frequency	750 MHz to 5800 MHz	
Return Loss	> 20 dB	
Power Capability	> 100 W (f < 1GHz), > 40 W (f > 1GHz)	

3.2.7 Tissue Simulating Liquids

For SAR measurement of the field distribution inside the phantom, the phantom must be filled with homogeneous tissue simulating liquid to a depth of at least 15 cm. For head SAR testing, the liquid height from the ear reference point (ERP) of the phantom to the liquid top surface is larger than 15 cm. For body SAR testing, the liquid height from the center of the flat phantom to the liquid top surface is larger than 15 cm. The nominal dielectric values of the tissue simulating liquids in the phantom and the tolerance of 5% are listed in Table-3.1.



The dielectric properties of the head tissue simulating liquids are defined in IEEE1528, and KDB 865664 D01 Appendix A. For the body tissue simulating liquids, the dielectric properties are defined in KDB 865664 D01 Appendix A. The dielectric properties of the tissue simulating liquids were verified prior to the SAR evaluation using a dielectric assessment kit and a network analyzer.

Table-3.1 Targets of Tissue Simulating Liquid

Frequency (MHz)	Target Permittivity	Range of $\pm 5\%$	Target Conductivity	Range of $\pm 5\%$
750	41.9	39.8 ~ 44.0	0.89	0.85 ~ 0.93
835	41.5	39.4 ~ 43.6	0.90	0.86 ~ 0.95
900	41.5	39.4 ~ 43.6	0.97	0.92 ~ 1.02
1450	40.5	38.5 ~ 42.5	1.20	1.14 ~ 1.26
1640	40.3	38.3 ~ 42.3	1.29	1.23 ~ 1.35
1750	40.1	38.1 ~ 42.1	1.37	1.30 ~ 1.44
1800	40.0	38.0 ~ 42.0	1.40	1.33 ~ 1.47
1900	40.0	38.0 ~ 42.0	1.40	1.33 ~ 1.47
2000	40.0	38.0 ~ 42.0	1.40	1.33 ~ 1.47
2300	39.5	37.5 ~ 41.5	1.67	1.59 ~ 1.75
2450	39.2	37.2 ~ 41.2	1.80	1.71 ~ 1.89
2600	39.0	37.1 ~ 41.0	1.96	1.86 ~ 2.06
3500	37.9	36.0 ~ 39.8	2.91	2.76 ~ 3.06
5200	36.0	34.2 ~ 37.8	4.66	4.43 ~ 4.89
5300	35.9	34.1 ~ 37.7	4.76	4.52 ~ 5.00
5500	35.6	33.8 ~ 37.4	4.96	4.71 ~ 5.21
5600	35.5	33.7 ~ 37.3	5.07	4.82 ~ 5.32
5800	35.3	33.5 ~ 37.1	5.27	5.01 ~ 5.53

The following table gives the recipes for tissue simulating liquids.

Table-3.2 Recipes of Tissue Simulating Liquid

Tissue Type	Bactericide	DGBE	HEC	NaCl	Sucrose	Triton X-100	Water	Diethylene Glycol Mono-hexylether
H750	0.2	-	0.2	1.5	56.0	-	42.1	-
H835	0.2	-	0.2	1.5	57.0	-	41.1	-
H900	0.2	-	0.2	1.4	58.0	-	40.2	-
H1450	-	43.3	-	0.6	-	-	56.1	-
H1640	-	45.8	-	0.5	-	-	53.7	-
H1750	-	47.0	-	0.4	-	-	52.6	-
H1800	-	44.5	-	0.3	-	-	55.2	-
H1900	-	44.5	-	0.2	-	-	55.3	-
H2000	-	44.5	-	0.1	-	-	55.4	-
H2300	-	44.9	-	0.1	-	-	55.0	-
H2450	-	45.0	-	0.1	-	-	54.9	-
H2600	-	45.1	-	0.1	-	-	54.8	-
H3500	-	8.0	-	0.2	-	20.0	71.8	-
H5G	-	-	-	-	-	17.2	65.5	17.3

3.3 SAR System Verification

The system check verifies that the system operates within its specifications. It is performed daily or before every SAR measurement. The system check uses normal SAR measurements in the flat section of the phantom with a matched dipole at a specified distance. The system verification setup is shown as below.

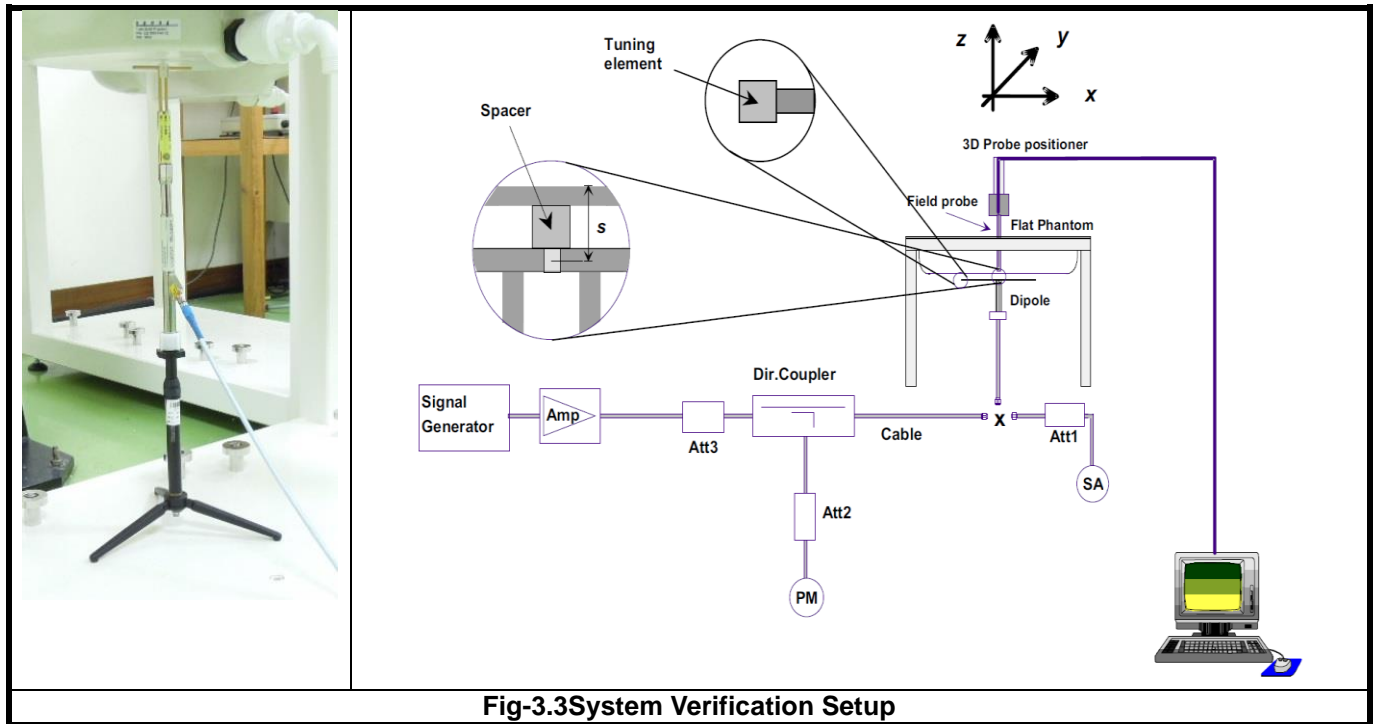


Fig-3.3 System Verification Setup

The validation dipole is placed beneath the flat phantom with the specific spacer in place. The distance spacer is touch the phantom surface with a light pressure at the reference marking and be oriented parallel to the long side of the phantom. The spectrum analyzer measures the forward power at the location of the system check dipole connector. The signal generator is adjusted for the desired forward power (250 mW is used for 700 MHz to 3 GHz, 100 mW is used for 3.5 GHz to 6 GHz) at the dipole connector and the power meter is read at that level. After connecting the cable to the dipole, the signal generator is readjusted for the same reading at power meter.

After system check testing, the SAR result will be normalized to 1W forward input power and compared with the reference SAR value derived from validation dipole certificate report. The deviation of system check should be within 10 %.

3.4 SAR Measurement Procedure

According to the SAR test standard, the recommended procedure for assessing the peak spatial-average SAR value consists of the following steps:

- (a) Power reference measurement
- (b) Area scan
- (c) Zoom scan
- (d) Power drift measurement

The SAR measurement procedures for each of test conditions are as follows:

- (a) Make EUT to transmit maximum output power
- (b) Measure conducted output power through RF cable
- (c) Place the EUT in the specific position of phantom
- (d) Perform SAR testing steps on the DASY system
- (e) Record the SAR value

3.4.1 Area & Zoom Scan Procedure

First Area Scan is used to locate the approximate location(s) of the local peak SAR value(s). The measurement grid within an Area Scan is defined by the grid extent, grid step size and grid offset. Next, in order to determine the EM field distribution in a three-dimensional spatial extension, Zoom Scan is required. The Zoom Scan is performed around the highest E-field value to determine the averaged SAR-distribution over 10 g. According to KDB 865664D01, the resolution for Area and Zoom scan is specified in the table below.

Items	<= 2 GHz	2-3 GHz	3-4 GHz	4-5 GHz	5-6 GHz
Area Scan ($\Delta x, \Delta y$)	<= 15 mm	<= 12 mm	<= 12 mm	<= 10 mm	<= 10 mm
Zoom Scan ($\Delta x, \Delta y$)	<= 8 mm	<= 5 mm	<= 5 mm	<= 4 mm	<= 4 mm
Zoom Scan (Δz)	<= 5 mm	<= 5 mm	<= 4 mm	<= 3 mm	<= 2 mm
Zoom Scan Volume	>= 30 mm	>= 30 mm	>= 28 mm	>= 25 mm	>= 22 mm

Note:

When zoom scan is required and report SAR is <=1.4 W/kg, the zoom scan resolution of $\Delta x / \Delta y$ (2-3GHz: <= 8 mm, 3-4GHz: <= 7 mm, 4-6GHz: <= 5 mm) may be applied.

3.4.2 Volume Scan Procedure

The volume scan is used for assess overlapping SAR distributions for antennas transmitting in different frequency bands. It is equivalent to an oversized zoom scan used in standalone measurements. The measurement volume will be used to enclose all the simultaneous transmitting antennas. For antennas transmitting simultaneously in different frequency bands, the volume scan is measured separately in each frequency band. In order to sum correctly to compute the 1g aggregate SAR, the EUT remain in the same test position for all measurements and all volume scan use the same spatial resolution and grid spacing. When all volume scan were completed, the software, SEMCAD postprocessor can combine and subsequently superpose these measurement data to calculating the multiband SAR.

3.4.3 Power Drift Monitoring

All SAR testing is under the EUT install full charged battery and transmit maximum output power. In DASY measurement software, the power reference measurement and power drift measurement procedures are used for monitoring the power drift of EUT during SAR test. Both these procedures measure the field at a specified reference position before and after the SAR testing. The software will calculate the field difference in dB. If the power drift more than 5%, the SAR will be retested.

3.4.4 Spatial Peak SAR Evaluation

The procedure for spatial peak SAR evaluation has been implemented according to the test standard. It can be conducted for 1g and 10g, as well as for user-specific masses. The DASY software includes all numerical procedures necessary to evaluate the spatial peak SAR value.

The base for the evaluation is a "cube" measurement. The measured volume must include the 1g and 10g cubes with the highest averaged SAR values. For that purpose, the center of the measured volume is aligned to the interpolated peak SAR value of a previously performed area scan.

The entire evaluation of the spatial peak values is performed within the post-processing engine (SEMCAD). The system always gives the maximum values for the 1g and 10g cubes. The algorithm to find the cube with highest averaged SAR is divided into the following stages:

- (a) Extraction of the measured data (grid and values) from the Zoom Scan
- (b) Calculation of the SAR value at every measurement point based on all stored data (A/D values and measurement parameters)
- (c) Generation of a high-resolution mesh within the measured volume
- (d) Interpolation of all measured values from the measurement grid to the high-resolution grid
- (e) Extrapolation of the entire 3-D field distribution to the phantom surface over the distance from sensor to surface
- (f) Calculation of the averaged SAR within masses of 1g and 10g

3.4.5 SAR Averaged Methods

In DASY, the interpolation and extrapolation are both based on the modified Quadratic Shepard's method. The interpolation scheme combines a least-square fitted function method and a weighted average method which are the two basic types of computational interpolation and approximation.

Extrapolation routines are used to obtain SAR values between the lowest measurement points and the inner phantom surface. The extrapolation distance is determined by the surface detection distance and the probe sensor offset. The uncertainty increases with the extrapolation distance. To keep the uncertainty within 1% for the 1 g and 10 g cubes, the extrapolation distance should not be larger than 5 mm.

4. SAR Measurement Evaluation

4.1 EUT Configuration and Setting

<Considerations Related to WLAN for Setup and Testing>

In general, various vendor specific external test software and chipset based internal test modes are typically used for SAR measurement. These chipset based test mode utilities are generally hardware and manufacturer dependent, and often include substantial flexibility to reconfigure or reprogram a device. A Wi-Fi device must be configured to transmit continuously at the required data rate, channel bandwidth and signal modulation, using the highest transmission duty factor supported by the test mode tools for SAR measurement. The test frequencies established using test mode must correspond to the actual channel frequencies. When 802.11 frame gaps are accounted for in the transmission, a maximum transmission duty factor of 92 - 96% is typically achievable in most test mode configurations. A minimum transmission duty factor of 85% is required to avoid certain hardware and device implementation issues related to wide range SAR scaling. In addition, a periodic transmission duty factor is required for current generation SAR systems to measure SAR correctly. The reported SAR must be scaled to 100% transmission duty factor to determine compliance at the maximum tune-up tolerance limit.

According to KDB 248227 D01, this device has installed WLAN engineering testing software which can provide continuous transmitting RF signal. During WLAN SAR testing, this device was operated to transmit continuously at the maximum transmission duty with specified transmission mode, operating frequency, lowest data rate, and maximum output power.

Initial Test Configuration

An initial test configuration is determined for OFDM transmission modes in 2.4 GHz and 5 GHz bands according to the channel bandwidth, modulation and data rate combination(s) with the highest maximum output power specified for production units in each standalone and aggregated frequency band. When the same maximum power is specified for multiple transmission modes in a frequency band, the largest channel bandwidth, lowest order modulation, lowest data rate and lowest order 802.11a/g/n/ac mode is used for SAR measurement, on the highest measured output power channel in the initial test configuration, for each frequency band.

Subsequent Test Configuration

SAR measurement requirements for the remaining 802.11 transmission mode configurations that have not been tested in the initial test configuration are determined separately for each standalone and aggregated frequency band, in each exposure condition, according to the maximum output power specified for production units. Additional power measurements may be required to determine if SAR measurements are required for subsequent highest output power channels in a subsequent test configuration. When the highest reported SAR for the initial test configuration according to the initial test position or fixed exposure position requirements, is adjusted by the ratio of the subsequent test configuration to initial test configuration specified maximum output power and the adjusted SAR is ≤ 1.2 W/kg, SAR is not required for that subsequent test configuration.

SAR Test Configuration and Channel Selection

When multiple channel bandwidth configurations in a frequency band have the same specified maximum output power, the initial test configuration is using largest channel bandwidth, lowest order modulation, lowest data rate, and lowest order 802.11 mode (i.e., 802.11a is chosen over 802.11n then 802.11ac or 802.11g is chosen over 802.11n). After an initial test configuration is determined, if multiple test channels have the same measured maximum output power, the channel chosen for SAR measurement is determined according to the following.

- 1) The channel closest to mid-band frequency is selected for SAR measurement.
- 2) For channels with equal separation from mid-band frequency; for example, high and low channels or two mid-band channels, the higher frequency (number) channel is selected for SAR measurement.

Test Reduction for U-NII-1 (5.2 GHz) and U-NII-2A (5.3 GHz) Bands

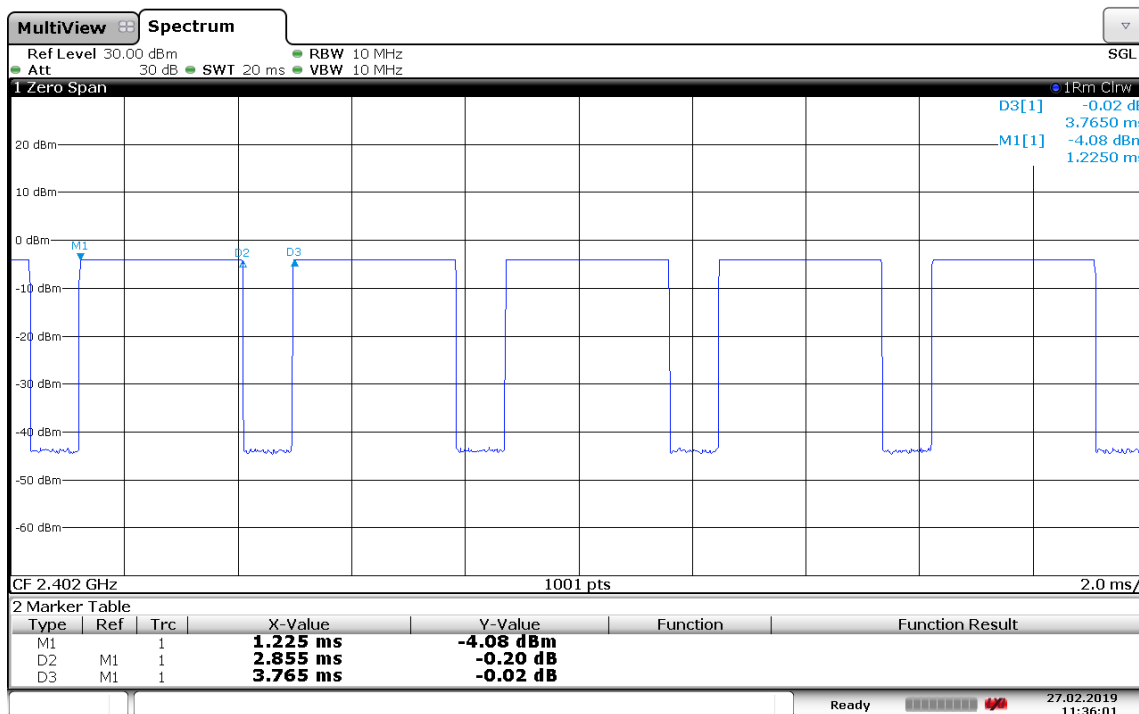
For devices that operate in both U-NII bands using the same transmitter and antenna(s), SAR test reduction is determined according to the following.

- 1) When the same maximum output power is specified for both bands, begin SAR measurement in U-NII-2A band by applying the OFDM SAR requirements. If the highest reported SAR for a test configuration is ≤ 1.2 W/kg, SAR is not required for U-NII-1 band for that configuration (802.11 mode and exposure condition).
- 2) When different maximum output power is specified for the bands, begin SAR measurement in the band with higher specified maximum output power. The highest reported SAR for the tested configuration is adjusted by the ratio of lower to higher specified maximum output power for the two bands. When the adjusted SAR is ≤ 1.2 W/kg, SAR is not required for the band with lower maximum output power in that test configuration.

<Considerations Related to Bluetooth for Setup and Testing>

This device has installed Bluetooth engineering testing software which can provide continuous transmitting RF signal. During Bluetooth SAR testing, this device was operated to transmit continuously at the maximum transmission duty with specified transmission mode, operating frequency, lowest data rate, and maximum output power.

The Bluetooth call box has been used during SAR measurement and the EUT was set to DH5 mode at the maximum output power. Its duty factor was calculated as below and the measured SAR for Bluetooth would be scaled to the 100% transmission duty factor to determine compliance.



Time-domain plot for Bluetooth transmission signal

The duty factor of Bluetooth signal has been calculated as following.

$$\text{Duty Factor} = \text{Pulse Width} / \text{Total Period} = 2.855 / 3.765 = 75.8 \%$$

4.2 EUT Testing Position

This variant report is made for verification. All the worst SAR configurations specified in the original SAR report was repeated and verified to ensure the device remains compliant.

FCC SAR Test Report

4.3 Tissue Verification

The measuring results for tissue simulating liquid are shown as below.

Test Date	Frequency (MHz)	Liquid Temp. (°C)	Measured Conductivity (σ)	Measured Permittivity (ϵ_r)	Target Conductivity (σ)	Target Permittivity (ϵ_r)	Conductivity Deviation (%)	Permittivity Deviation (%)
Oct. 09, 2019	2450	23.3	1.864	38.922	1.8	39.2	3.56	-0.71
Oct. 10, 2019	2450	23.4	1.861	38.07	1.8	39.2	3.39	-2.88
Oct. 16, 2019	2450	23.5	1.868	37.896	1.8	39.2	3.78	-3.33
Oct. 21, 2019	2450	23.1	1.875	38.898	1.8	39.2	4.17	-0.77
Oct. 09, 2019	5250	23.3	4.852	35.71	4.71	35.9	3.01	-0.53
Oct. 10, 2019	5250	23.4	4.701	36.243	4.71	35.9	-0.19	0.96
Oct. 16, 2019	5250	23.5	4.573	36.637	4.71	35.9	-2.91	2.05
Oct. 09, 2019	5600	23.3	5.177	35.18	5.07	35.5	2.11	-0.90
Oct. 10, 2019	5600	23.4	5.124	35.657	5.07	35.5	1.07	0.44
Oct. 16, 2019	5600	23.5	4.913	36.164	5.07	35.5	-3.10	1.87
Oct. 18, 2019	5600	23.3	4.965	35.254	5.07	35.5	-2.07	-0.69
Oct. 21, 2019	5600	23.1	5.28	35.166	5.07	35.5	4.14	-0.94
Oct. 09, 2019	5750	23.3	5.323	34.943	5.22	35.4	1.97	-1.29
Oct. 10, 2019	5750	23.4	5.298	35.4	5.22	35.4	1.49	0.00
Oct. 16, 2019	5750	23.5	5.061	35.952	5.22	35.4	-3.05	1.56
Oct. 21, 2019	5750	23.1	5.444	34.929	5.22	35.4	4.29	-1.33

Note:

The dielectric properties of the tissue simulating liquid must be measured within 24 hours before the SAR testing and within $\pm 5\%$ of the target values. Liquid temperature during the SAR testing must be within ± 2 °C.

4.4 System Validation

The SAR measurement system was validated according to procedures in KDB 865664 D01. The validation status in tabulated summary is as below.

Test Date	Probe S/N	Calibration Point	Measured Conductivity (σ)	Measured Permittivity (ϵ_r)	Validation for CW			Validation for Modulation		
					Sensitivity Range	Probe Linearity	Probe Isotropy	Modulation Type	Duty Factor	PAR
Oct. 09, 2019	7537	2450	1.864	38.922	Pass	Pass	Pass	OFDM	N/A	Pass
Oct. 10, 2019	7537	2450	1.861	38.07	Pass	Pass	Pass	OFDM	N/A	Pass
Oct. 16, 2019	3971	2450	1.868	37.896	Pass	Pass	Pass	OFDM	N/A	Pass
Oct. 21, 2019	7537	2450	1.875	38.898	Pass	Pass	Pass	OFDM	N/A	Pass
Oct. 09, 2019	7537	5250	4.852	35.71	Pass	Pass	Pass	OFDM	N/A	Pass
Oct. 10, 2019	7537	5250	4.701	36.243	Pass	Pass	Pass	OFDM	N/A	Pass
Oct. 16, 2019	3971	5250	4.573	36.637	Pass	Pass	Pass	OFDM	N/A	Pass
Oct. 09, 2019	7537	5600	5.177	35.18	Pass	Pass	Pass	OFDM	N/A	Pass
Oct. 10, 2019	7537	5600	5.124	35.657	Pass	Pass	Pass	OFDM	N/A	Pass
Oct. 16, 2019	3971	5600	4.913	36.164	Pass	Pass	Pass	OFDM	N/A	Pass
Oct. 18, 2019	7375	5600	4.965	35.254	Pass	Pass	Pass	OFDM	N/A	Pass
Oct. 21, 2019	7537	5600	5.28	35.166	Pass	Pass	Pass	OFDM	N/A	Pass
Oct. 09, 2019	7537	5750	5.323	34.943	Pass	Pass	Pass	OFDM	N/A	Pass
Oct. 10, 2019	7537	5750	5.298	35.4	Pass	Pass	Pass	OFDM	N/A	Pass
Oct. 16, 2019	3971	5750	5.061	35.952	Pass	Pass	Pass	OFDM	N/A	Pass
Oct. 21, 2019	7537	5750	5.444	34.929	Pass	Pass	Pass	OFDM	N/A	Pass

FCC SAR Test Report

4.5 System Verification

The measuring result for system verification is tabulated as below.

Test Date	Frequency (MHz)	1W Target SAR-1g (W/kg)	Measured SAR-1g (W/kg)	Normalized to 1W SAR-1g (W/kg)	Deviation (%)	Dipole S/N	Probe S/N	DAE S/N
Oct. 09, 2019	2450	52.70	12.80	51.20	-2.85	737	7537	1585
Oct. 10, 2019	2450	52.70	12.9	51.60	-2.09	737	7537	1585
Oct. 16, 2019	2450	52.70	12.5	50.00	-5.12	737	3971	1431
Oct. 21, 2019	2450	52.70	12.9	51.60	-2.09	737	7537	1585
Oct. 09, 2019	5250	80.70	7.88	78.80	-2.35	1019	7537	1585
Oct. 10, 2019	5250	80.70	7.99	79.90	-0.99	1019	7537	1585
Oct. 16, 2019	5250	80.70	7.77	77.70	-3.72	1019	3971	1431
Oct. 09, 2019	5600	85.80	9	90.00	4.90	1019	7537	1585
Oct. 10, 2019	5600	85.80	8.84	88.40	3.03	1019	7537	1585
Oct. 16, 2019	5600	85.80	9.11	91.10	6.18	1019	3971	1431
Oct. 18, 2019	5600	85.80	8.12	81.20	-5.36	1019	7375	1277
Oct. 21, 2019	5600	85.80	9.18	91.80	6.99	1019	7537	1585
Oct. 09, 2019	5750	81.50	7.68	76.80	-5.77	1019	7537	1585
Oct. 10, 2019	5750	81.50	7.71	77.10	-5.40	1019	7537	1585
Oct. 16, 2019	5750	81.50	7.58	75.80	-6.99	1019	3971	1431
Oct. 21, 2019	5750	81.50	7.93	79.30	-2.70	1019	7537	1585

Note:

Comparing to the reference SAR value provided by SPEAG, the validation data should be within its specification of 10 %. The result indicates the system check can meet the variation criterion and the plots can be referred to Appendix A of this report.

FCC SAR Test Report

4.6 Maximum Output Power

4.6.1 Maximum Target Conducted Power

The maximum conducted average power (Unit: dBm) including tune-up tolerance is shown as below.

Mode	2.4G WLAN (Ant-0 + Ant-1)	5.2G WLAN (Ant-0 + Ant-1)	5.3G WLAN (Ant-0 + Ant-1)	5.6G WLAN (Ant-0 + Ant-1)	5.8G WLAN (Ant-0 + Ant-1)
802.11b	Ch1: 23.0 Ch6: 23.0 Ch11: 23.0	N/A	N/A	N/A	N/A
802.11g	Ch1: 20.0 Ch6: 22.5 Ch11: 18.5	N/A	N/A	N/A	N/A
802.11a	N/A	16.5	16.8	Ch100: 21.0 Ch116: 22.0 Ch120: 22.0 Ch124: 22.0 Ch132: 22.0 Ch140: 19.5 Ch144: 22.0	21.5
802.11n HT20	Ch1: 18.5 Ch6: 22.5 Ch11: 19.0	N/A	N/A	N/A	N/A
802.11n HT40	Ch1: 16.0 Ch6: 18.5 Ch11: 17.5	N/A	N/A	N/A	N/A
802.11ac VHT20	N/A	16.5	17.0	Ch100: 19.0 Ch116: 22.0 Ch120: 22.0 Ch124: 22.0 Ch132: 22.0 Ch140: 16.5 Ch144: 22.0	21.5
802.11ac VHT40	N/A	17.5	16.8	Ch102: 15.5 Ch110: 22.0 Ch118: 22.0 Ch126: 22.0 Ch134: 17.5 Ch142: 22.0	21.5
802.11ac VHT80	N/A	17.0	12.5	Ch106: 15.5 Ch122: 21.5 Ch138: 21.5	22.0

Mode	2.4G Bluetooth
Bluetooth DH	7.0
Bluetooth LE	2.0

FCC SAR Test Report

4.6.2 Measured Conducted Power Result

The measuring conducted average power (Unit: dBm) is shown as below.

<WLAN 2.4G>

Mode	Channel	Frequency (MHz)	Average Power (Ant-0 + Ant-1)
802.11b	1	2412	22.24
	6	2437	22.23
	11	2462	22.31

<WLAN 5.2G>

Mode	Channel	Frequency (MHz)	Average Power (Ant-0 + Ant-1)
802.11ac (VHT40)	38	5190	16.46
	46	5230	16.54

<WLAN 5.6G>

Mode	Channel	Frequency (MHz)	Average Power
802.11ac (VHT40)	102	5510	14.38
	110	5550	21.55
	118	5590	21.46
	126	5630	21.39
	134	5670	16.73
	142	5710	21.70

<WLAN 5.8G>

Mode	Channel	Frequency (MHz)	Average Power
802.11ac (VHT80)	155	5775	21.19

<Bluetooth>

Mode	Channel	Frequency (MHz)	Average Power
Bluetooth EDR	0	2402	6.19
	39	2441	5.45
	78	2480	7.00
Bluetooth LE	0	2402	1.90
	19	2440	1.35
	39	2480	1.86

4.7 SAR Testing Results

4.7.1 SAR Test Reduction Considerations

<KDB 447498 D01, General RF Exposure Guidance>

Testing of other required channels within the operating mode of a frequency band is not required when the reported SAR for the mid-band or highest output power channel is:

- (1) ≤ 0.8 W/kg or 2.0 W/kg, for 1-g or 10-g respectively, when the transmission band is ≤ 100 MHz
- (2) ≤ 0.6 W/kg or 1.5 W/kg, for 1-g or 10-g respectively, when the transmission band is between 100 MHz and 200 MHz
- (3) ≤ 0.4 W/kg or 1.0 W/kg, for 1-g or 10-g respectively, when the transmission band is ≥ 200 MHz

When SAR is not measured at the maximum power level allowed for production units, the measured SAR will be scaled to the maximum tune-up tolerance limit to determine compliance. The scaling factor for the tune-up power is defined as maximum tune-up limit (mW) / measured conducted power (mW). The reported SAR would be calculated by measured SAR x tune-up power scaling factor.

The SAR has been measured with highest transmission duty factor supported by the test mode tools for WLAN and/or Bluetooth. When the transmission duty factor could not achieve 100%, the reported SAR will be scaled to 100% transmission duty factor to determine compliance at the maximum tune-up power. The scaling factor for the duty factor is defined as 100% / transmission duty cycle (%). The reported SAR would be calculated by measured SAR x tune-up power scaling factor x duty cycle scaling factor.

<KDB 248227 D01, SAR Guidance for Wi-Fi Transmitters>

- (1) For handsets operating next to ear, hotspot mode or mini-tablet configurations, the initial test position procedures were applied. The test position with the highest extrapolated peak SAR will be used as the initial test position. When the reported SAR of initial test position is ≤ 0.4 W/kg, SAR testing for remaining test positions is not required. Otherwise, SAR is evaluated at the subsequent highest peak SAR positions until the reported SAR result is ≤ 0.8 W/kg or all test positions are measured.
- (2) For WLAN 2.4 GHz, the highest measured maximum output power channel for DSSS was selected for SAR measurement. When the reported SAR is ≤ 0.8 W/kg, no further SAR testing is required. Otherwise, SAR is evaluated at the next highest measured output power channel. When any reported SAR is > 1.2 W/kg, SAR is required for the third channel. For OFDM modes (802.11g/n), SAR is not required when the highest reported SAR for DSSS is adjusted by the ratio of OFDM to DSSS specified maximum output power and it is ≤ 1.2 W/kg.

FCC SAR Test Report

- (3) For WLAN 5 GHz, the initial test configuration was selected according to the transmission mode with the highest maximum output power. When the reported SAR of initial test configuration is > 0.8 W/kg, SAR is required for the subsequent highest measured output power channel until the reported SAR result is <= 1.2 W/kg or all required channels are measured. For other transmission modes, SAR is not required when the highest reported SAR for initial test configuration is adjusted by the ratio of subsequent test configuration to initial test configuration specified maximum output power and it is <= 1.2 W/kg.
- (4) For WLAN MIMO mode, the power-based standalone SAR test exclusion or the sum of SAR provision in KDB 447498 to determine simultaneous transmission SAR test exclusion should be applied. Otherwise, SAR for MIMO mode will be measured with all applicable antennas transmitting simultaneously at the specified maximum output power of MIMO operation.

4.7.2 SAR Results for Body Exposure Condition (Separation Distance is 0 mm Gap)

Sample 1

Plot No.	Band	Mode	Test Position	Ch.	Ant Status	Battery	Holster	Scan handle (gun)	Duty Cycle	Crest Factor	Max. Tune-up Power (dBm)	Measured Conducted Power (dBm)	Scaling Factor	Power Drift (dB)	Measured SAR-1g (W/kg)	Scaled SAR-1g (W/kg)
01	WLAN2.4G	802.11b	Left Side	1	Ant 0+1	Battery 4	2	w/	99.30	1.01	23.0	22.24	1.19	-0.01	0.414	0.50
02	WLAN5.2G	802.11ac VHT40	Left Side	46	Ant 0+1	Battery 4	2	w/	77.90	1.28	17.5	16.54	1.25	-0.12	0.128	0.20
03	WLAN5.6G	802.11ac VHT40	Left Side	110	Ant 0+1	Battery 4	2	w/	77.90	1.28	22.0	21.55	1.11	-0.06	0.421	0.60
04	WLAN5.8G	802.11ac VHT80	Left Side	155	Ant 0+1	Battery 4	2	w/	64.00	1.56	22.0	21.19	1.21	-0.10	0.434	0.82
05	BT	BDR	Left Side	78	Ant 0	Battery 4	2	w/	75.80	1.32	7.0	7.00	1.00	0.10	0.0056	0.01

Sample 2

Plot No.	Band	Mode	Test Position	Ch.	Ant Status	Battery	Holster	Scan handle (gun)	Duty Cycle	Crest Factor	Max. Tune-up Power (dBm)	Measured Conducted Power (dBm)	Scaling Factor	Power Drift (dB)	Measured SAR-1g (W/kg)	Scaled SAR-1g (W/kg)
06	WLAN2.4G	802.11b	Left Side	1	Ant 0+1	Battery 4	2	w/	99.30	1.01	23.0	22.24	1.19	-0.12	0.411	0.49
07	WLAN5.2G	802.11ac VHT40	Left Side	46	Ant 0+1	Battery 4	2	w/	77.90	1.28	17.5	16.54	1.25	-0.02	0.128	0.20
08	WLAN5.6G	802.11ac VHT40	Left Side	110	Ant 0+1	Battery 4	2	w/	77.90	1.28	22.0	21.55	1.11	-0.03	0.364	0.52
09	WLAN5.8G	802.11ac VHT80	Left Side	155	Ant 0+1	Battery 4	2	w/	64.00	1.56	22.0	21.19	1.21	-0.09	0.393	0.74
10	BT	BDR	Left Side	78	Ant 0	Battery 4	2	w/	75.80	1.32	7.0	7.00	1.00	0.13	0.00555	0.01

Sample 3

Plot No.	Band	Mode	Test Position	Ch.	Ant Status	Battery	Holster	Scan handle (gun)	Duty Cycle	Crest Factor	Max. Tune-up Power (dBm)	Measured Conducted Power (dBm)	Scaling Factor	Power Drift (dB)	Measured SAR-1g (W/kg)	Scaled SAR-1g (W/kg)
11	WLAN2.4G	802.11b	Left Side	1	Ant 0+1	Battery 4	2	w/	99.30	1.01	23.0	22.24	1.19	0.15	0.228	0.27
12	WLAN5.2G	802.11ac VHT40	Left Side	46	Ant 0+1	Battery 4	2	w/	77.90	1.28	17.5	16.54	1.25	0.04	0.167	0.27
13	WLAN5.6G	802.11ac VHT40	Left Side	110	Ant 0+1	Battery 4	2	w/	77.90	1.28	22.0	21.55	1.11	-0.16	0.491	0.70
14	WLAN5.8G	802.11ac VHT80	Left Side	155	Ant 0+1	Battery 4	2	w/	64.00	1.56	22.0	21.19	1.21	-0.06	0.501	0.95
15	BT	BDR	Left Side	78	Ant 0	Battery 4	2	w/	75.80	1.32	7.0	7.00	1.00	-0.06	0.00233	0.00

FCC SAR Test Report

Sample 4

lot No.	Band	Mode	Test Position	Ch.	Ant Status	Battery	Holster	Scan handle (gun)	Duty Cycle	Crest Factor	Max. Tune-up Power (dBm)	Measured Conducted Power (dBm)	Scaling Factor	Power Drift (dB)	Measured SAR-1g (W/kg)	Scaled SAR-1g (W/kg)
16	WLAN2.4G	802.11b	Left Side	1	Ant 0+1	Battery 4	2	w/	99.30	1.01	23.0	22.24	1.19	-0.06	0.442	0.53
17	WLAN5.2G	802.11ac VHT40	Left Side	46	Ant 0+1	Battery 4	2	w/	77.90	1.28	17.5	16.54	1.25	0.01	0.135	0.22
18	WLAN5.6G	802.11ac VHT40	Left Side	110	Ant 0+1	Battery 4	2	w/	77.90	1.28	22.0	21.55	1.11	0.05	0.679	0.96
19	WLAN5.8G	802.11ac VHT80	Left Side	155	Ant 0+1	Battery 4	2	w/	64.00	1.56	22.0	21.19	1.21	0.15	0.409	0.77
20	BT	BDR	Left Side	78	Ant 0	Battery 4	2	w/	75.80	1.32	7.0	7.00	1.00	-0.16	0.011	0.01

Sample 5

Plot No.	Band	Mode	Test Position	Ch.	Ant Status	Battery	Holster	Scan handle (gun)	Duty Cycle	Crest Factor	Max. Tune-up Power (dBm)	Measured Conducted Power (dBm)	Scaling Factor	Power Drift (dB)	Measured SAR-1g (W/kg)	Scaled SAR-1g (W/kg)
21	WLAN2.4G	802.11b	Left Side	1	Ant 0+1	Battery 4	2	w/	99.30	1.01	23.0	22.24	1.19	0.05	0.353	0.42
22	WLAN5.2G	802.11ac VHT40	Left Side	46	Ant 0+1	Battery 4	2	w/	77.90	1.28	17.5	16.54	1.25	-0.10	0.161	0.26
23	WLAN5.6G	802.11ac VHT40	Left Side	110	Ant 0+1	Battery 4	2	w/	77.90	1.28	22.0	21.55	1.11	0.01	0.423	0.60
24	WLAN5.8G	802.11ac VHT80	Left Side	155	Ant 0+1	Battery 4	2	w/	64.00	1.56	22.0	21.19	1.21	-0.08	0.56	1.06
25	BT	BDR	Left Side	78	Ant 0	Battery 4	2	w/	75.80	1.32	7.0	7.00	1.00	-0.11	0.00513	0.01

Sample 6

Plot No.	Band	Mode	Test Position	Ch.	Ant Status	Battery	Holster	Scan handle (gun)	Duty Cycle	Crest Factor	Max. Tune-up Power (dBm)	Measured Conducted Power (dBm)	Scaling Factor	Power Drift (dB)	Measured SAR-1g (W/kg)	Scaled SAR-1g (W/kg)
26	WLAN2.4G	802.11b	Left Side	1	Ant 0+1	Battery 4	2	w/	99.30	1.01	23.0	22.24	1.19	-0.12	0.327	0.39
27	WLAN5.2G	802.11ac VHT40	Left Side	46	Ant 0+1	Battery 4	2	w/	77.90	1.28	17.5	16.64	1.22	-0.11	0.131	0.20
28	WLAN5.6G	802.11ac VHT40	Left Side	110	Ant 0+1	Battery 4	2	w/	77.90	1.28	22.0	21.55	1.11	-0.10	0.565	0.80
29	WLAN5.8G	802.11ac VHT80	Left Side	155	Ant 0+1	Battery 4	2	w/	64.00	1.56	22.0	21.19	1.21	-0.01	0.538	1.02
30	BT	BDR	Left Side	78	Ant 0	Battery 4	2	w/	75.80	1.32	7.0	7.00	1.00	0.17	0.01	0.01

4.7.3 SAR Measurement Variability

According to KDB 865664 D01, SAR measurement variability was assessed for each frequency band, which is determined by the SAR probe calibration point and tissue-equivalent medium used for the device measurements. When both head and body tissue-equivalent media are required for SAR measurements in a frequency band, the variability measurement procedures should be applied to the tissue medium with the highest measured SAR, using the highest measured SAR configuration for that tissue-equivalent medium. Alternatively, if the highest measured SAR for both head and body tissue-equivalent media are ≤ 1.45 W/kg and the ratio of these highest SAR values, i.e., largest divided by smallest value, is ≤ 1.10 , the highest SAR configuration for either head or body tissue-equivalent medium may be used to perform the repeated measurement. These additional measurements are repeated after the completion of all measurements requiring the same head or body tissue-equivalent medium in a frequency band. The test device should be returned to ambient conditions (normal room temperature) with the battery fully charged before it is re-mounted on the device holder for the repeated measurement(s) to minimize any unexpected variations in the repeated results.

Since all the measured SAR are less than 0.8 W/kg, the repeated measurement is not required.

4.7.4 Simultaneous Multi-band Transmission Evaluation

<Possibilities of Simultaneous Transmission>

The simultaneous transmission possibilities for this device are listed as below.

Simultaneous TX Combination	Capable Transmit Configurations	Body Exposure Condition
1	WLAN 2.4G + NFC	Yes
2	WLAN 5G + NFC	Yes
3	BT + NFC	Yes

Note :

1. The WLAN 2.4G and WLAN 5G cannot transmit simultaneously.
2. The WLAN and Bluetooth cannot transmit simultaneously.

Test Engineer : Willy Chang, and James Chu

5. Calibration of Test Equipment

Equipment	Manufacturer	Model	SN	Cal. Date	Cal. Interval
System Validation Dipole	SPEAG	D2450V2	737	Aug. 26, 2019	1 Year
System Validation Dipole	SPEAG	D5GHzV2	1019	Mar. 21, 2019	1 Year
Dosimetric E-Field Probe	SPEAG	EX3DV4	3971	Mar. 29, 2019	1 Year
Dosimetric E-Field Probe	SPEAG	EX3DV4	7375	Dec. 13, 2018	1 Year
Dosimetric E-Field Probe	SPEAG	EX3DV4	7537	Jun. 18, 2019	1 Year
Data Acquisition Electronics	SPEAG	DAE4	1277	Jan. 24, 2019	1 Year
Data Acquisition Electronics	SPEAG	DAE4	1431	Mar. 25, 2019	1 Year
Data Acquisition Electronics	SPEAG	DAE4	1585	Jun. 07, 2019	1 Year
Spectrum Analyzer	R&S	FSL6	102006	Mar. 26, 2019	1 Year
ENA Series Network Analyzer	Agilent	E5071C	MY46214281	Jun. 17, 2019	1 Year
MXG Analog Signal Generator	Agilent	N5181A	MY50143868	Jun. 27, 2019	1 Year
Power Meter	Anritsu	ML2495A	1218009	Jun. 28, 2019	1 Year
Power Sensor	Anritsu	MA2411B	1207252	Jun. 28, 2019	1 Year
Thermometer	YFE	YF-160A	130504591	Mar. 22, 2019	1 Year

6. Measurement Uncertainty

According to KDB 865664 D01, SAR measurement uncertainty analysis is required in SAR reports only when the highest measured SAR in a frequency band is ≥ 1.5 W/kg for 1-g SAR, and ≥ 3.75 W/kg for 10-g SAR. The procedures described in IEEE Std 1528-2013 should be applied. The expanded SAR measurement uncertainty must be ≤ 30 %, for a confidence interval of $k = 2$. When the highest measured SAR within a frequency band is < 1.5 W/kg for 1-g and < 3.75 W/kg for 10-g, the extensive SAR measurement uncertainty analysis described in IEEE Std 1528-2013 is not required in SAR reports submitted for equipment approval. Hence, the measurement uncertainty analysis is not required in this SAR report because the test result met the condition.

7. Information of the Testing Laboratories

We, Bureau Veritas Consumer Products Services (H.K.) Ltd., Taoyuan Branch, were founded in 1988 to provide our best service in EMC, Radio, Telecom and Safety consultation. Our laboratories are accredited and approved according to ISO/IEC 17025.

If you have any comments, please feel free to contact us at the following:

Taiwan Huaya Lab:

Add: No. 19, Huaya 2nd Rd., Guishan Dist., Taoyuan City 333, Taiwan

Tel: +886-(0)3-318-3232

Fax: +886-(0)3-211-5834

Taiwan Linkou Lab:

Add: No. 47-2, Baodoucuokeng, Linkou Dist., New Taipei City 244, Taiwan

Tel: +886-(0)2-2605-2180

Fax: +886-(0)2-2605-2943

Taiwan Hsinchu Lab1:

Add: E-2, No. 1, Lixing 1st Rd., East Dist., Hsinchu City 300, Taiwan

Tel: +886-(0)3-666-8565

Fax: +886-(0)3-666-8323

Taiwan Hsinchu Lab2:

Add: No. 49, Ln. 206, Wende Rd., Qionglin Township, Hsinchu County 307, Taiwan

Tel: +886-(0)3-512-0595

Fax: +886-(0)3-512-0568

Taiwan Xindian Lab:

Add: B2F., No. 215, Sec. 3, Beixin Rd., Xindian Dist., New Taipei City 231, Taiwan

Tel: +886-(0)2-8914-5882

Fax: +886-(0)2-8914-5840

Email: service.adt@tw.bureauveritas.com

Web Site: <https://ee.bureauveritas.com.tw/BVInternet/Default>

The road map of all our labs can be found in our web site also.

---END---

Appendix A. SAR Plots of System Verification

The plots for system verification with largest deviation for each SAR system combination are shown as follows.

System Check_H2450_191016

DUT: Dipole 2450 MHz; Type: D2450V2; SN: 737

Communication System: CW; Frequency: 2450 MHz; Duty Cycle: 1:1

Medium: H19T27N4_1016 Medium parameters used: $f = 2450$ MHz; $\sigma = 1.868$ S/m; $\epsilon_r = 37.896$; $\rho = 1000$ kg/m³

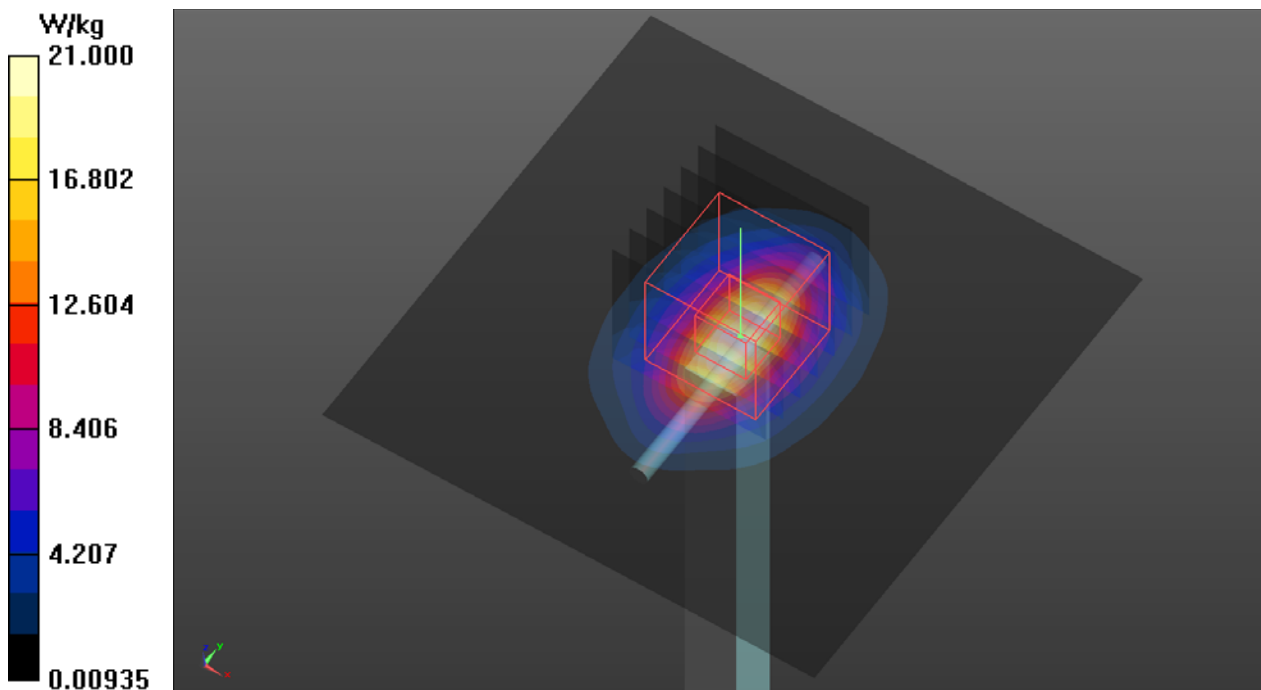
Ambient Temperature : 23.8 °C ; Liquid Temperature : 23.5 °C

DASY5 Configuration:

- Probe: EX3DV4 - SN3971; ConvF(7.65, 7.65, 7.65); Calibrated: 2019/03/29
- Sensor-Surface: 1.4mm (Mechanical Surface Detection)
- Electronics: DAE4 Sn1431; Calibrated: 2019/03/25
- Phantom: ELI Phantom_1245; Type: QDOVA002AA;
- Measurement SW: DASY52, Version 52.10 (2); SEMCAD X Version 14.6.12 (7470)

Pin=250mW/Area Scan (81x81x1): Interpolated grid: dx=1.200 mm, dy=1.200 mm
Maximum value of SAR (interpolated) = 21.0 W/kg

Pin=250mW/Zoom Scan (7x7x7)/Cube 0: Measurement grid: dx=5mm, dy=5mm, dz=5mm
Reference Value = 102.5 V/m; Power Drift = -0.04 dB
Peak SAR (extrapolated) = 26.3 W/kg
SAR(1 g) = 12.5 W/kg; SAR(10 g) = 5.8 W/kg
Maximum value of SAR (measured) = 21.2 W/kg



System Check_H5250_191016

DUT: Dipole 5 GHz; Type: D5GHzV2; SN: 1019

Communication System: CW; Frequency: 5250 MHz; Duty Cycle: 1:1

Medium: H34T60N4_1016 Medium parameters used: $f = 5250$ MHz; $\sigma = 4.573$ S/m; $\epsilon_r = 36.637$; $\rho = 1000$ kg/m³

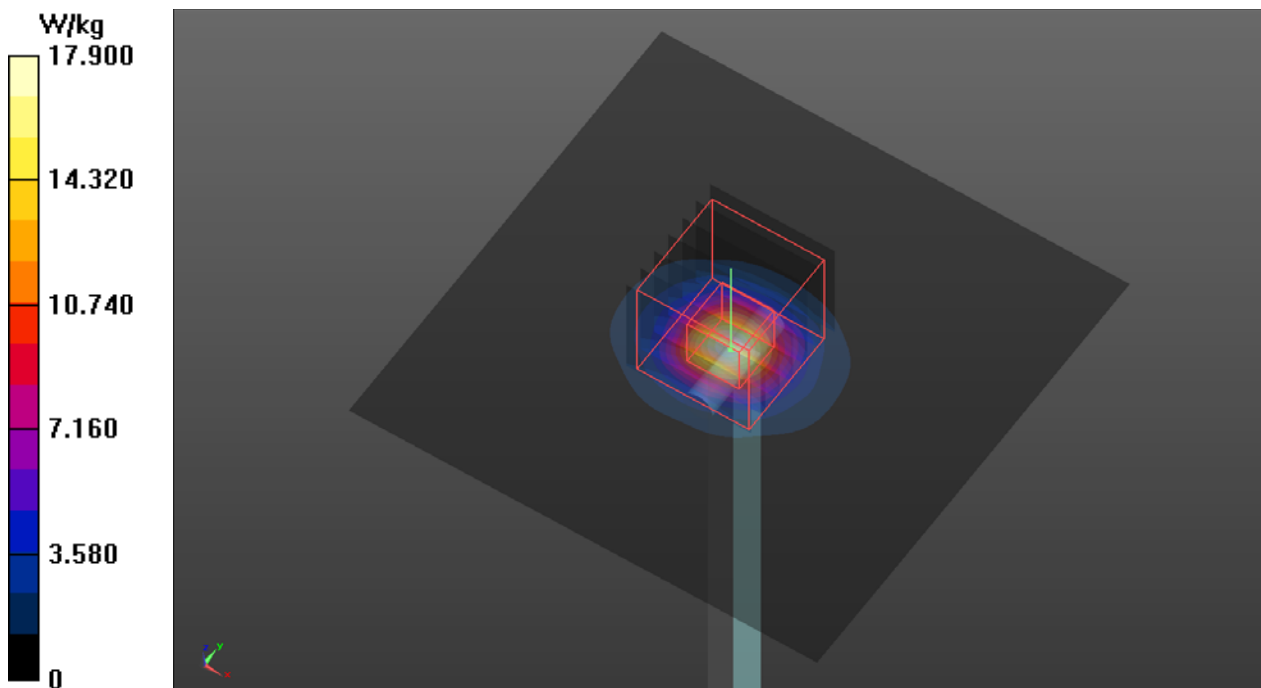
Ambient Temperature : 23.8 °C ; Liquid Temperature : 23.5 °C

DASY5 Configuration:

- Probe: EX3DV4 - SN3971; ConvF(5.12, 5.12, 5.12); Calibrated: 2019/03/29
- Sensor-Surface: 1.4mm (Mechanical Surface Detection)
- Electronics: DAE4 Sn1431; Calibrated: 2019/03/25
- Phantom: ELI Phantom_1245; Type: QDOVA002AA;
- Measurement SW: DASY52, Version 52.10 (2); SEMCAD X Version 14.6.12 (7470)

Pin=100mW/Area Scan (91x91x1): Interpolated grid: dx=1.000 mm, dy=1.000 mm
Maximum value of SAR (interpolated) = 17.9 W/kg

Pin=100mW/Zoom Scan (7x7x12)/Cube 0: Measurement grid: dx=4mm, dy=4mm, dz=2mm
Reference Value = 71.15 V/m; Power Drift = 0.04 dB
Peak SAR (extrapolated) = 33.5 W/kg
SAR(1 g) = 7.77 W/kg; SAR(10 g) = 2.23 W/kg
Maximum value of SAR (measured) = 19.8 W/kg



System Check_H5600_191021

DUT: Dipole 5 GHz; Type: D5GHzV2; SN: 1019

Communication System: CW; Frequency: 5600 MHz; Duty Cycle: 1:1

Medium: H34T60N1_1021 Medium parameters used: $f = 5600$ MHz; $\sigma = 5.28$ S/m; $\epsilon_r = 35.166$; $\rho = 1000$ kg/m³

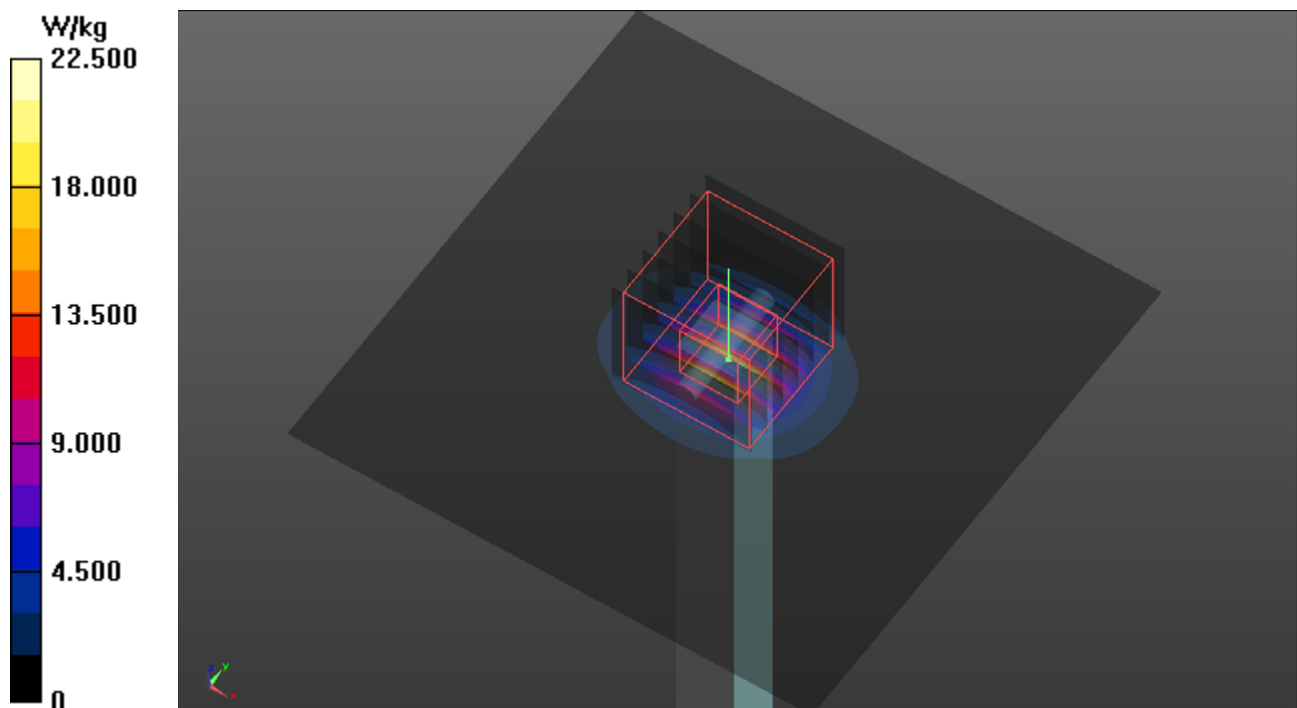
Ambient Temperature : 23.7 °C ; Liquid Temperature : 23.1 °C

DASY5 Configuration:

- Probe: EX3DV4 - SN7537; ConvF(4.75, 4.75, 4.75); Calibrated: 2019/06/18
- Sensor-Surface: 1.4mm (Mechanical Surface Detection)
- Electronics: DAE4 Sn1585; Calibrated: 2019/06/07
- Phantom: ELI Phantom_2105; Type: QD OVA 004 Ax; Serial: 2105
- Measurement SW: DASY52, Version 52.10 (2); SEMCAD X Version 14.6.12 (7470)

Pin=100mW/Area Scan (91x91x1): Interpolated grid: dx=1.000 mm, dy=1.000 mm
Maximum value of SAR (interpolated) = 22.5 W/kg

Pin=100mW/Zoom Scan (7x7x12)/Cube 0: Measurement grid: dx=4mm, dy=4mm, dz=2mm
Reference Value = 74.01 V/m; Power Drift = -0.14 dB
Peak SAR (extrapolated) = 42.8 W/kg
SAR(1 g) = 9.18 W/kg; SAR(10 g) = 2.61 W/kg
Maximum value of SAR (measured) = 23.9 W/kg



System Check_H5750_191016

DUT: Dipole 5 GHz; Type: D5GHzV2; SN: 1019

Communication System: CW; Frequency: 5750 MHz; Duty Cycle: 1:1

Medium: H34T60N4_1016 Medium parameters used: $f = 5750$ MHz; $\sigma = 5.061$ S/m; $\epsilon_r = 35.952$; $\rho = 1000$ kg/m³

Ambient Temperature : 23.8 °C ; Liquid Temperature : 23.5 °C

DASY5 Configuration:

- Probe: EX3DV4 - SN3971; ConvF(4.92, 4.92, 4.92); Calibrated: 2019/03/29
- Sensor-Surface: 1.4mm (Mechanical Surface Detection)
- Electronics: DAE4 Sn1431; Calibrated: 2019/03/25
- Phantom: ELI Phantom_1245; Type: QDOVA002AA;
- Measurement SW: DASY52, Version 52.10 (2); SEMCAD X Version 14.6.12 (7470)

Pin=100mW/Area Scan (91x91x1): Interpolated grid: dx=1.000 mm, dy=1.000 mm

Maximum value of SAR (interpolated) = 17.3 W/kg

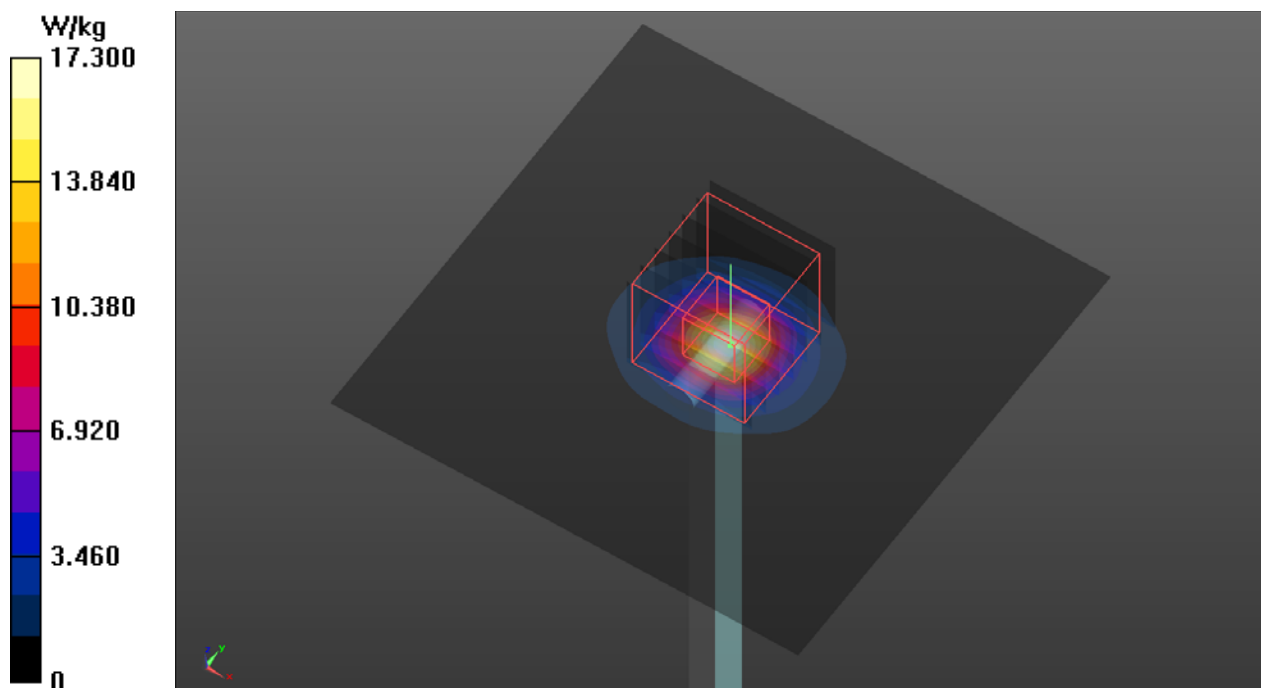
Pin=100mW/Zoom Scan (7x7x12)/Cube 0: Measurement grid: dx=4mm, dy=4mm, dz=2mm

Reference Value = 58.21 V/m; Power Drift = -0.08 dB

Peak SAR (extrapolated) = 33.2 W/kg

SAR(1 g) = 7.58 W/kg; SAR(10 g) = 2.03 W/kg

Maximum value of SAR (measured) = 18.8 W/kg



Appendix B. SAR Plots of SAR Measurement

The SAR plots for highest measured SAR in each exposure configuration, wireless mode and frequency band combination, and measured SAR > 1.5 W/kg are shown as follows.

P01 WLAN2.4G_802.11b_Left Side_0mm_Ch1_Sample 1_Ant0+1_Battery CK65-BTCS_Holster2_Gun_w

DUT: 191004C23

Communication System: WLAN_2.4G; Frequency: 2412 MHz; Duty Cycle: 1:1.01

Medium: H19T27N1_1009 Medium parameters used: $f = 2412$ MHz; $\sigma = 1.816$ S/m; $\epsilon_r = 39.196$; $\rho = 1000$ kg/m³

Ambient Temperature : 23.6 °C ; Liquid Temperature : 23.3 °C

DASY5 Configuration:

- Probe: EX3DV4 - SN7537; ConvF(7.39, 7.39, 7.39); Calibrated: 2019/06/18
- Sensor-Surface: 1.4mm (Mechanical Surface Detection)
- Electronics: DAE4 Sn1585; Calibrated: 2019/06/07
- Phantom: ELI Phantom_2105; Type: QD OVA 004 Ax; Serial: 2105
- Measurement SW: DASY52, Version 52.10 (2); SEMCAD X Version 14.6.12 (7470)

- **Area Scan (101x221x1):** Interpolated grid: dx=1.200 mm, dy=1.200 mm

Maximum value of SAR (interpolated) = 0.654 W/kg

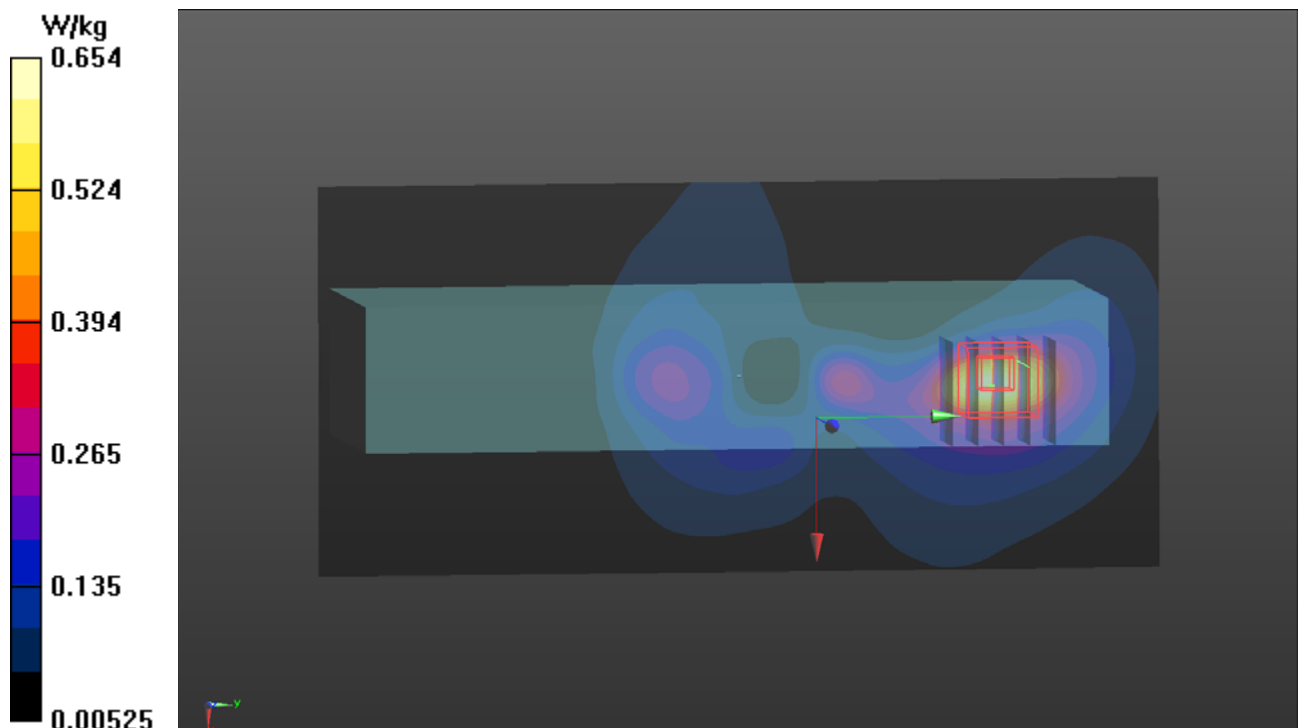
- **Zoom Scan (5x5x7)/Cube 0:** Measurement grid: dx=8mm, dy=8mm, dz=5mm

Reference Value = 17.51 V/m; Power Drift = -0.01 dB

Peak SAR (extrapolated) = 0.838 W/kg

SAR(1 g) = 0.414 W/kg; SAR(10 g) = 0.211 W/kg

Maximum value of SAR (measured) = 0.617 W/kg



P02 WLAN5.2G_802.11ac VHT40_Left Side_0mm_Ch46_Sample 1_Ant0+1_Battery CK65-BTCS_Holster2_Gun_w

DUT: 191004C23

Communication System: WLAN_5G; Frequency: 5230 MHz; Duty Cycle: 1:1.28

Medium: H34T60N1_1009 Medium parameters used: $f = 5230$ MHz; $\sigma = 4.834$ S/m; $\epsilon_r = 35.748$; $\rho = 1000$ kg/m³

Ambient Temperature : 23.6 °C ; Liquid Temperature : 23.3 °C

DASY5 Configuration:

- Probe: EX3DV4 - SN7537; ConvF(5.36, 5.36, 5.36); Calibrated: 2019/06/18
- Sensor-Surface: 1.4mm (Mechanical Surface Detection)
- Electronics: DAE4 Sn1585; Calibrated: 2019/06/07
- Phantom: ELI Phantom_2105; Type: QD OVA 004 Ax; Serial: 2105
- Measurement SW: DASY52, Version 52.10 (2); SEMCAD X Version 14.6.12 (7470)

- **Area Scan (121x261x1)**: Interpolated grid: dx=1.000 mm, dy=1.000 mm

Maximum value of SAR (interpolated) = 0.209 W/kg

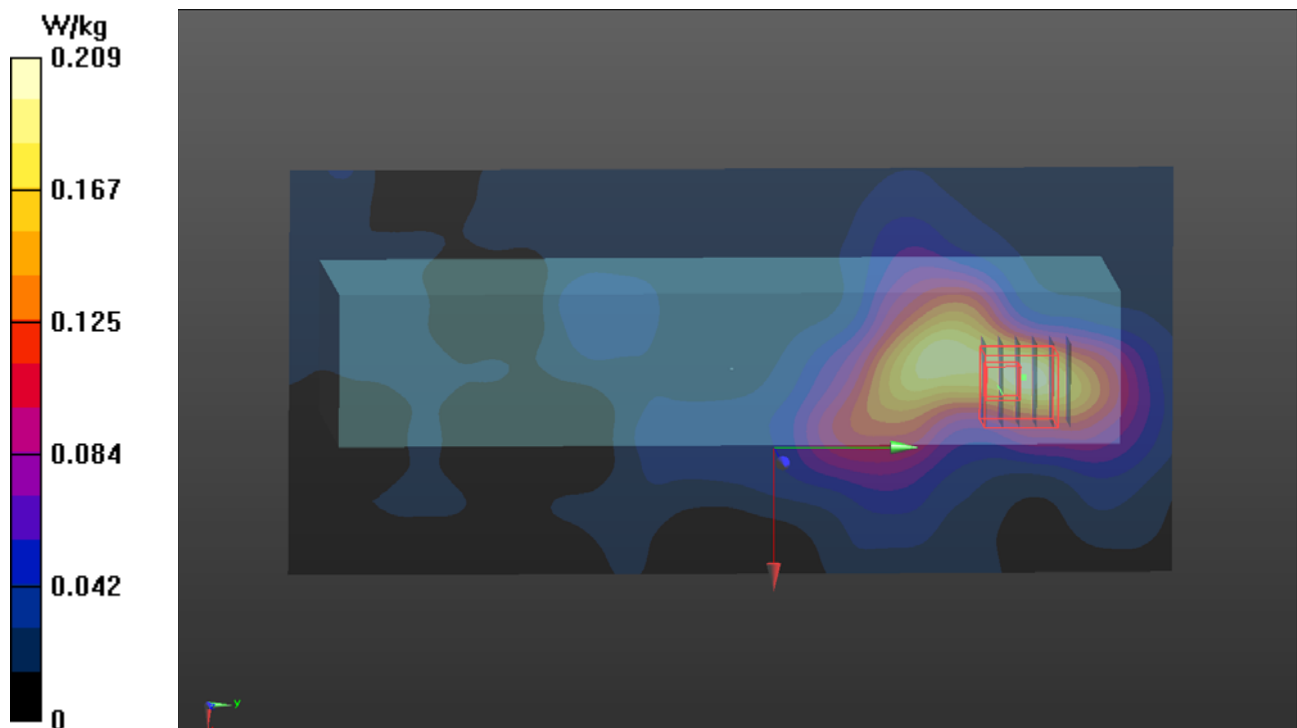
- **Zoom Scan (6x6x12)/Cube 0**: Measurement grid: dx=5mm, dy=5mm, dz=2mm

Reference Value = 7.143 V/m; Power Drift = -0.12 dB

Peak SAR (extrapolated) = 0.615 W/kg

SAR(1 g) = 0.128 W/kg; SAR(10 g) = 0.047 W/kg

Maximum value of SAR (measured) = 0.369 W/kg



P03 WLAN5.6G_802.11ac VHT40_Left Side_0mm_Ch110_Sample 1_Ant0+1_Battery CK65-BTCS_Holster2_Gun_w

DUT: 191004C23

Communication System: WLAN_5G; Frequency: 5550 MHz; Duty Cycle: 1:1.28

Medium: H34T60N1_1009 Medium parameters used: $f = 5550$ MHz; $\sigma = 5.129$ S/m; $\epsilon_r = 35.241$; $\rho = 1000$ kg/m³

Ambient Temperature : 23.6 °C ; Liquid Temperature : 23.3 °C

DASY5 Configuration:

- Probe: EX3DV4 - SN7537; ConvF(4.75, 4.75, 4.75); Calibrated: 2019/06/18
- Sensor-Surface: 1.4mm (Mechanical Surface Detection)
- Electronics: DAE4 Sn1585; Calibrated: 2019/06/07
- Phantom: ELI Phantom_2105; Type: QD OVA 004 Ax; Serial: 2105
- Measurement SW: DASY52, Version 52.10 (2); SEMCAD X Version 14.6.12 (7470)

- **Area Scan (121x261x1)**: Interpolated grid: dx=1.000 mm, dy=1.000 mm

Maximum value of SAR (interpolated) = 0.812 W/kg

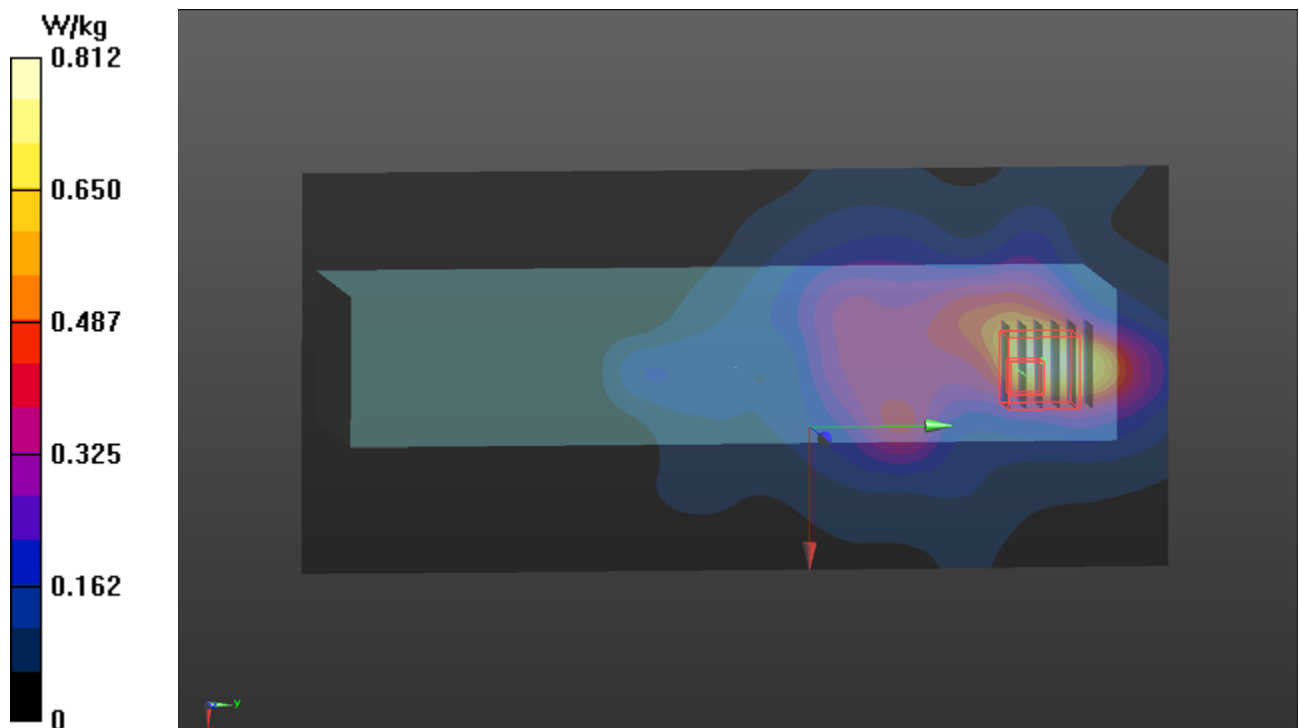
- **Zoom Scan (6x6x12)/Cube 0**: Measurement grid: dx=5mm, dy=5mm, dz=2mm

Reference Value = 13.73 V/m; Power Drift = -0.06 dB

Peak SAR (extrapolated) = 1.70 W/kg

SAR(1 g) = 0.421 W/kg; SAR(10 g) = 0.147 W/kg

Maximum value of SAR (measured) = 0.997 W/kg



P04 WLAN5.8G_802.11ac VHT80_Left Side_0mm_Ch155_Sample 1_Ant0+1_Battery CK65-BTCS_Holster2_Gun_w

DUT: 191004C23

Communication System: WLAN_5G; Frequency: 5775 MHz; Duty Cycle: 1:1.56

Medium: H34T60N1_1009 Medium parameters used: $f = 5775$ MHz; $\sigma = 5.347$ S/m; $\epsilon_r = 34.901$; $\rho = 1000$ kg/m³

Ambient Temperature : 23.6 °C ; Liquid Temperature : 23.3 °C

DASY5 Configuration:

- Probe: EX3DV4 - SN7537; ConvF(4.99, 4.99, 4.99); Calibrated: 2019/06/18
- Sensor-Surface: 1.4mm (Mechanical Surface Detection)
- Electronics: DAE4 Sn1585; Calibrated: 2019/06/07
- Phantom: ELI Phantom_2105; Type: QD OVA 004 Ax; Serial: 2105
- Measurement SW: DASY52, Version 52.10 (2); SEMCAD X Version 14.6.12 (7470)

- **Area Scan (121x261x1)**: Interpolated grid: dx=1.000 mm, dy=1.000 mm

Maximum value of SAR (interpolated) = 1.11 W/kg

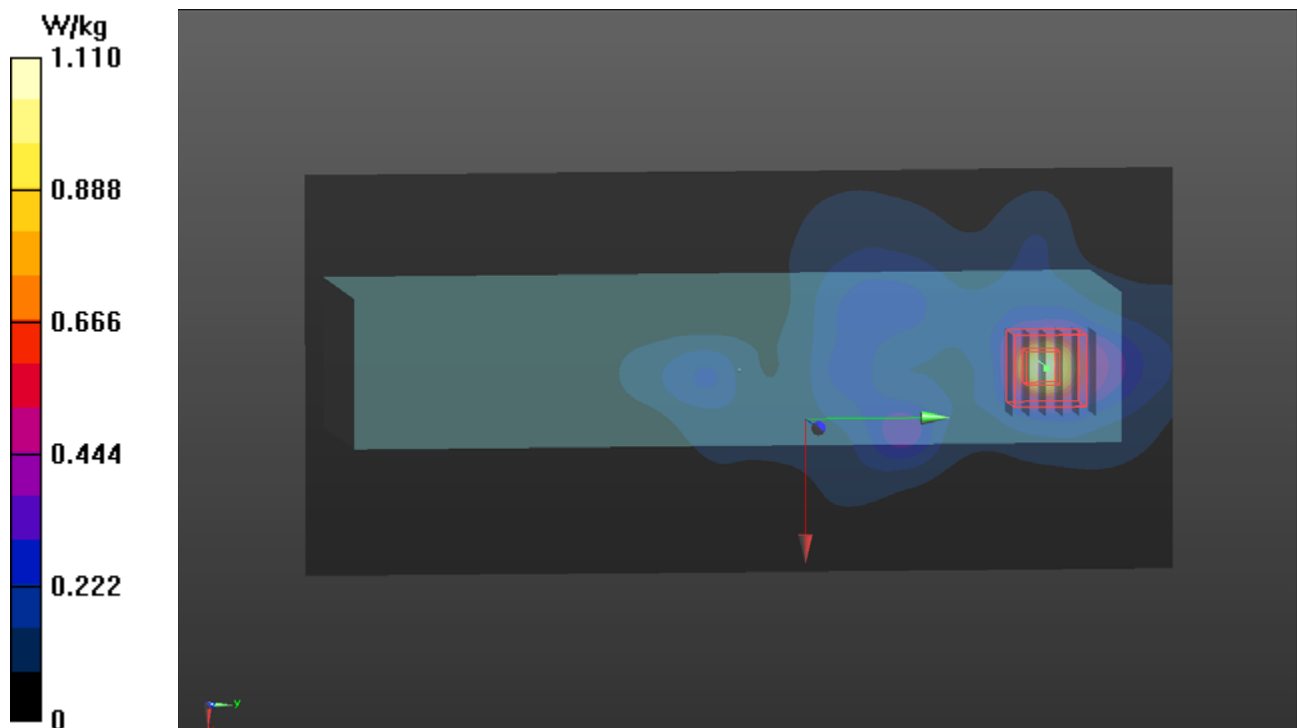
- **Zoom Scan (6x6x12)/Cube 0**: Measurement grid: dx=5mm, dy=5mm, dz=2mm

Reference Value = 15.82 V/m; Power Drift = -0.10 dB

Peak SAR (extrapolated) = 1.91 W/kg

SAR(1 g) = 0.434 W/kg; SAR(10 g) = 0.139 W/kg

Maximum value of SAR (measured) = 1.09 W/kg



P05 BT_BDR_Left Side_0mm_Ch78_Sample 1_Ant0_Battery CK65-BTCS_Holster2_Gun_w

DUT: 191004C23

Communication System: BT; Frequency: 2480 MHz; Duty Cycle: 1:1.32

Medium: H19T27N1_1010 Medium parameters used: $f = 2480$ MHz; $\sigma = 1.895$ S/m; $\epsilon_r = 37.962$; $\rho = 1000$ kg/m³

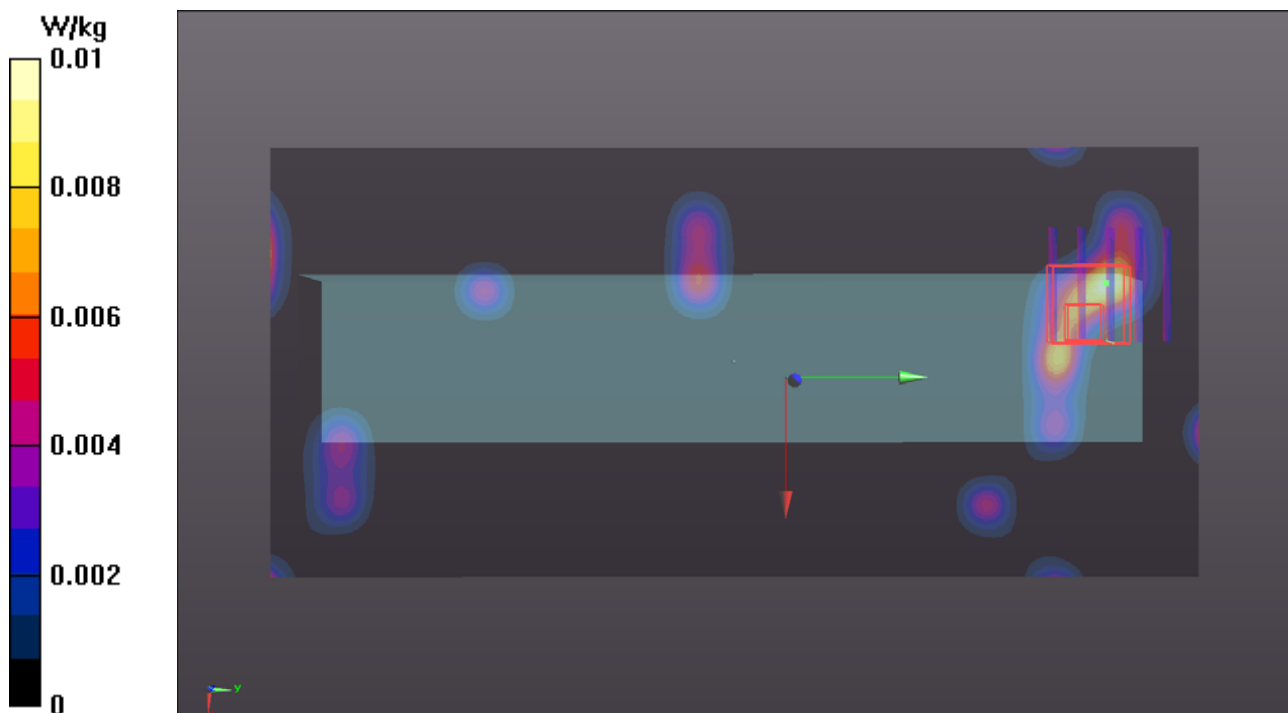
Ambient Temperature : 23.7 °C ; Liquid Temperature : 23.4 °C

DASY5 Configuration:

- Probe: EX3DV4 - SN7537; ConvF(7.39, 7.39, 7.39); Calibrated: 2019/06/18
- Sensor-Surface: 1.4mm (Mechanical Surface Detection)
- Electronics: DAE4 Sn1585; Calibrated: 2019/06/07
- Phantom: ELI Phantom_1043; Type: QDOVA;
- Measurement SW: DASY52, Version 52.10 (2); SEMCAD X Version 14.6.12 (7470)

- **Area Scan (101x221x1):** Interpolated grid: dx=1.200 mm, dy=1.200 mm
Maximum value of SAR (interpolated) = 0.0100 W/kg

- **Zoom Scan (5x5x7)/Cube 0:** Measurement grid: dx=8mm, dy=8mm, dz=5mm
Reference Value = 2.058 V/m; Power Drift = 0.10 dB
Peak SAR (extrapolated) = 0.00907 W/kg
SAR(1 g) = 0.0056 W/kg; SAR(10 g) = 0.00384 W/kg
Maximum value of SAR (measured) = 0.00806 W/kg



P06 WLAN2.4G_802.11b_Left Side_0mm_Ch1_Sample 2_Ant0+1_Battery CK65-BTCS_Holster2_Gun_w

DUT: 191004C23

Communication System: WLAN_2.4G; Frequency: 2412 MHz; Duty Cycle: 1:1.01

Medium: H19T27N1_1009 Medium parameters used: $f = 2412$ MHz; $\sigma = 1.816$ S/m; $\epsilon_r = 39.196$; $\rho = 1000$ kg/m³

Ambient Temperature : 23.6 °C ; Liquid Temperature : 23.3 °C

DASY5 Configuration:

- Probe: EX3DV4 - SN7537; ConvF(7.39, 7.39, 7.39); Calibrated: 2019/06/18
- Sensor-Surface: 1.4mm (Mechanical Surface Detection)
- Electronics: DAE4 Sn1585; Calibrated: 2019/06/07
- Phantom: ELI Phantom_2105; Type: QD OVA 004 Ax; Serial: 2105
- Measurement SW: DASY52, Version 52.10 (2); SEMCAD X Version 14.6.12 (7470)

- **Area Scan (101x221x1)**: Interpolated grid: dx=1.200 mm, dy=1.200 mm

Maximum value of SAR (interpolated) = 0.675 W/kg

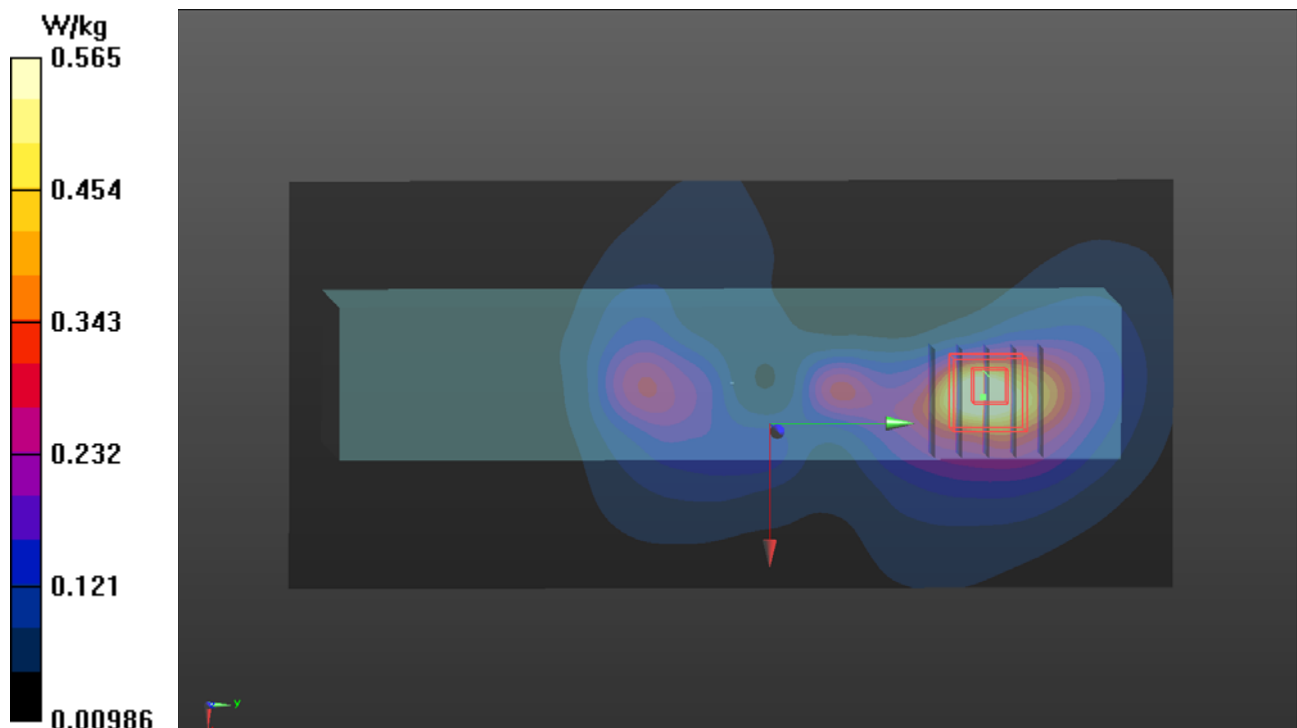
- **Zoom Scan (5x5x7)/Cube 0**: Measurement grid: dx=8mm, dy=8mm, dz=5mm

Reference Value = 18.61 V/m; Power Drift = -0.12 dB

Peak SAR (extrapolated) = 0.808 W/kg

SAR(1 g) = 0.411 W/kg; SAR(10 g) = 0.211 W/kg

Maximum value of SAR (measured) = 0.565 W/kg



P07 WLAN5.2G_802.11ac VHT40_Left Side_0mm_Ch46_Sample 2_Ant0+1_Battery CK65-BTCS_Holster2_Gun_w

DUT: 191004C23

Communication System: WLAN_5G; Frequency: 5230 MHz; Duty Cycle: 1:1.28

Medium: H34T60N1_1009 Medium parameters used: $f = 5230$ MHz; $\sigma = 4.834$ S/m; $\epsilon_r = 35.748$; $\rho = 1000$ kg/m³

Ambient Temperature : 23.6 °C ; Liquid Temperature : 23.3 °C

DASY5 Configuration:

- Probe: EX3DV4 - SN7537; ConvF(5.36, 5.36, 5.36); Calibrated: 2019/06/18
- Sensor-Surface: 1.4mm (Mechanical Surface Detection)
- Electronics: DAE4 Sn1585; Calibrated: 2019/06/07
- Phantom: ELI Phantom_2105; Type: QD OVA 004 Ax; Serial: 2105
- Measurement SW: DASY52, Version 52.10 (2); SEMCAD X Version 14.6.12 (7470)

- **Area Scan (121x261x1)**: Interpolated grid: dx=1.000 mm, dy=1.000 mm

Maximum value of SAR (interpolated) = 0.228 W/kg

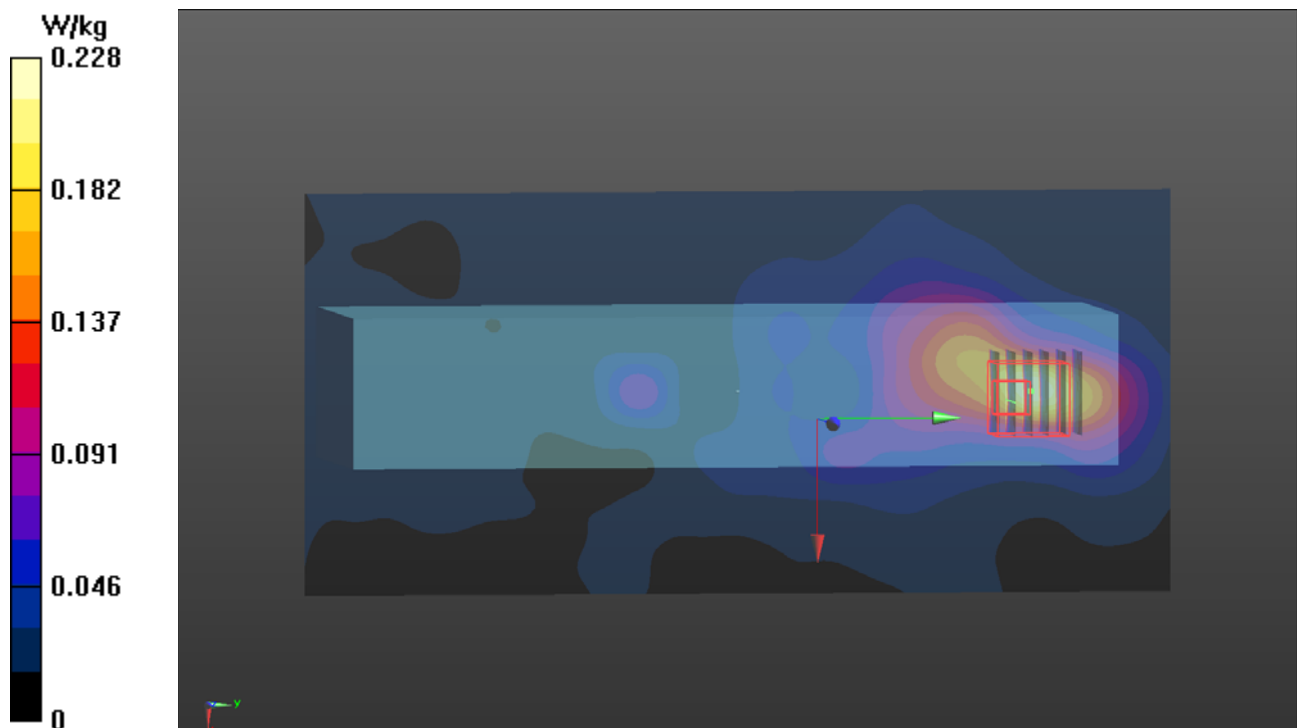
- **Zoom Scan (6x6x12)/Cube 0**: Measurement grid: dx=5mm, dy=5mm, dz=2mm

Reference Value = 7.617 V/m; Power Drift = -0.02 dB

Peak SAR (extrapolated) = 0.574 W/kg

SAR(1 g) = 0.128 W/kg; SAR(10 g) = 0.043 W/kg

Maximum value of SAR (measured) = 0.382 W/kg



P08 WLAN5.6G_802.11ac VHT40_Left Side_0mm_Ch110_Sample 2_Ant0+1_Battery CK65-BTCS_Holster2_Gun_w

DUT: 191004C23

Communication System: WLAN_5G; Frequency: 5550 MHz; Duty Cycle: 1:1.28

Medium: H34T60N1_1009 Medium parameters used: $f = 5550$ MHz; $\sigma = 5.129$ S/m; $\epsilon_r = 35.241$; $\rho = 1000$ kg/m³

Ambient Temperature : 23.6 °C ; Liquid Temperature : 23.3 °C

DASY5 Configuration:

- Probe: EX3DV4 - SN7537; ConvF(4.75, 4.75, 4.75); Calibrated: 2019/06/18
- Sensor-Surface: 1.4mm (Mechanical Surface Detection)
- Electronics: DAE4 Sn1585; Calibrated: 2019/06/07
- Phantom: ELI Phantom_2105; Type: QD OVA 004 Ax; Serial: 2105
- Measurement SW: DASY52, Version 52.10 (2); SEMCAD X Version 14.6.12 (7470)

- **Area Scan (121x261x1)**: Interpolated grid: dx=1.000 mm, dy=1.000 mm

Maximum value of SAR (interpolated) = 0.667 W/kg

- **Zoom Scan (6x6x12)/Cube 0**: Measurement grid: dx=5mm, dy=5mm, dz=2mm

Reference Value = 12.65 V/m; Power Drift = -0.03 dB

Peak SAR (extrapolated) = 1.75 W/kg

SAR(1 g) = 0.364 W/kg; SAR(10 g) = 0.144 W/kg

Maximum value of SAR (measured) = 1.07 W/kg

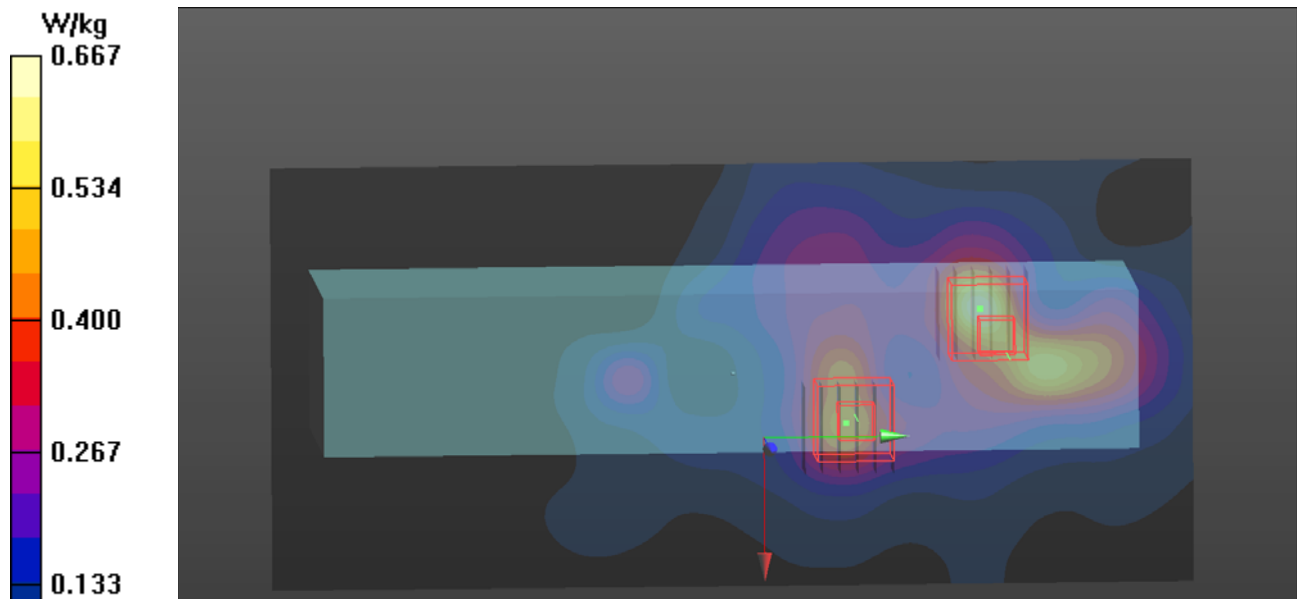
- **Zoom Scan (6x6x12)/Cube 1**: Measurement grid: dx=5mm, dy=5mm, dz=2mm

Reference Value = 12.65 V/m; Power Drift = -0.03 dB

Peak SAR (extrapolated) = 0.998 W/kg

SAR(1 g) = 0.288 W/kg; SAR(10 g) = 0.118 W/kg

Maximum value of SAR (measured) = 0.623 W/kg



P09 WLAN5.8G_802.11ac VHT80_Left Side_0mm_Ch155_Sample 2_Ant0+1_Battery CK65-BTCS_Holster2_Gun_w

DUT: 191004C23

Communication System: WLAN_5G; Frequency: 5775 MHz; Duty Cycle: 1:1.56

Medium: H34T60N1_1009 Medium parameters used: $f = 5775$ MHz; $\sigma = 5.347$ S/m; $\epsilon_r = 34.901$; $\rho = 1000$ kg/m³

Ambient Temperature : 23.6 °C ; Liquid Temperature : 23.3 °C

DASY5 Configuration:

- Probe: EX3DV4 - SN7537; ConvF(4.99, 4.99, 4.99); Calibrated: 2019/06/18
- Sensor-Surface: 1.4mm (Mechanical Surface Detection)
- Electronics: DAE4 Sn1585; Calibrated: 2019/06/07
- Phantom: ELI Phantom_2105; Type: QD OVA 004 Ax; Serial: 2105
- Measurement SW: DASY52, Version 52.10 (2); SEMCAD X Version 14.6.12 (7470)

- **Area Scan (121x261x1)**: Interpolated grid: dx=1.000 mm, dy=1.000 mm

Maximum value of SAR (interpolated) = 0.576 W/kg

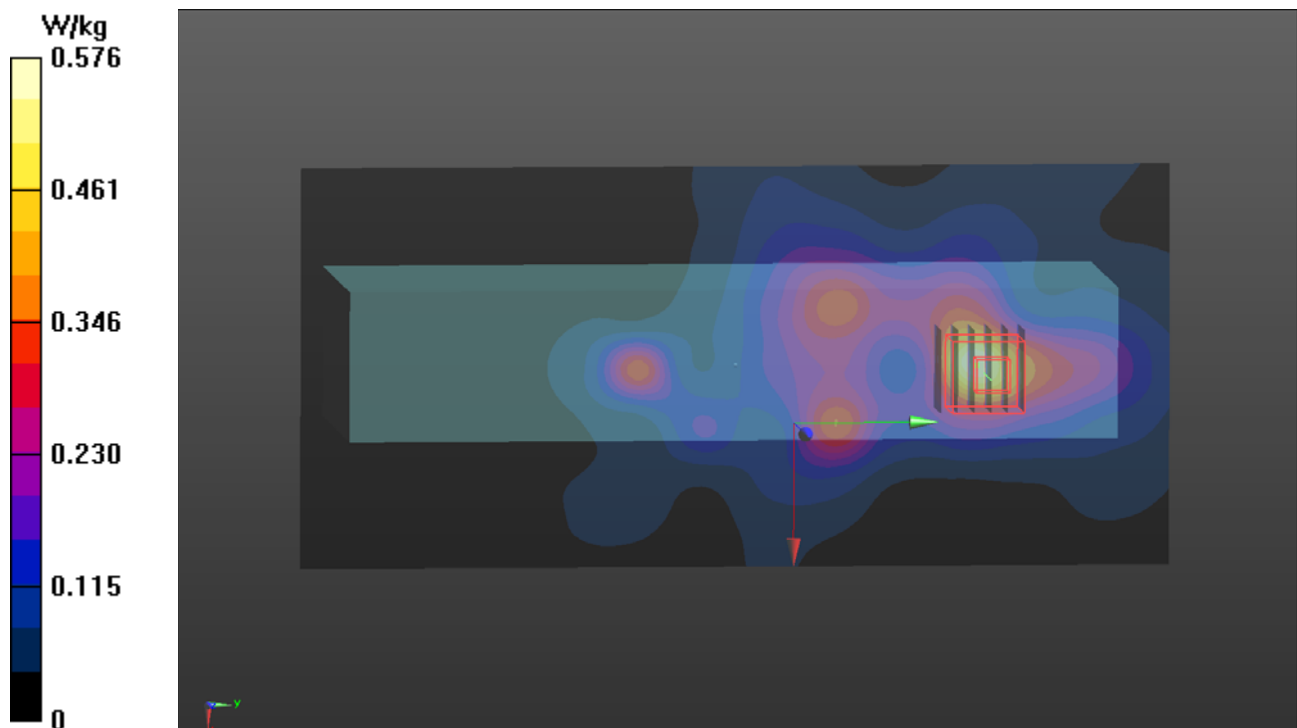
- **Zoom Scan (6x6x12)/Cube 0**: Measurement grid: dx=5mm, dy=5mm, dz=2mm

Reference Value = 11.33 V/m; Power Drift = -0.09 dB

Peak SAR (extrapolated) = 1.66 W/kg

SAR(1 g) = 0.393 W/kg; SAR(10 g) = 0.117 W/kg

Maximum value of SAR (measured) = 0.980 W/kg



P10 BT_BDR_Left Side_0mm_Ch78_Sample 2_Ant0_Battery CK65-BTCS_Holster2_Gun_w

DUT: 191004C23

Communication System: BT; Frequency: 2480 MHz; Duty Cycle: 1:1.32

Medium: H19T27N1_1010 Medium parameters used: $f = 2480$ MHz; $\sigma = 1.895$ S/m; $\epsilon_r = 37.962$; $\rho = 1000$ kg/m³

Ambient Temperature : 23.7 °C ; Liquid Temperature : 23.4 °C

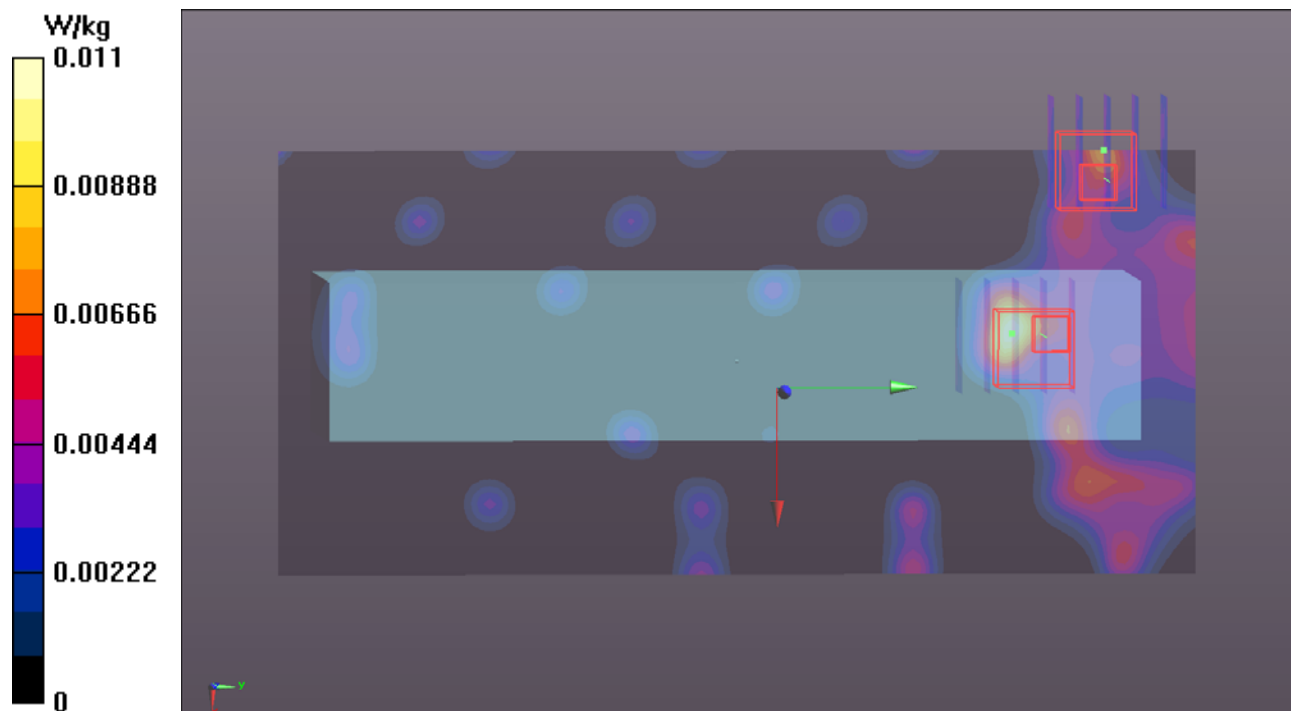
DASY5 Configuration:

- Probe: EX3DV4 - SN7537; ConvF(7.39, 7.39, 7.39); Calibrated: 2019/06/18
- Sensor-Surface: 1.4mm (Mechanical Surface Detection)
- Electronics: DAE4 Sn1585; Calibrated: 2019/06/07
- Phantom: ELI Phantom_1043; Type: QDOVA;
- Measurement SW: DASY52, Version 52.10 (2); SEMCAD X Version 14.6.12 (7470)

- **Area Scan (101x221x1):** Interpolated grid: dx=1.200 mm, dy=1.200 mm
Maximum value of SAR (interpolated) = 0.0111 W/kg

- **Zoom Scan (5x5x7)/Cube 0:** Measurement grid: dx=8mm, dy=8mm, dz=5mm
Reference Value = 1.630 V/m; Power Drift = 0.13 dB
Peak SAR (extrapolated) = 0.00910 W/kg
SAR(1 g) = 0.00555 W/kg; SAR(10 g) = 0.00383 W/kg
Maximum value of SAR (measured) = 0.00837 W/kg

- **Zoom Scan (5x5x7)/Cube 1:** Measurement grid: dx=8mm, dy=8mm, dz=5mm
Reference Value = 1.630 V/m; Power Drift = 0.13 dB
Peak SAR (extrapolated) = 0.00425 W/kg
SAR(1 g) = 0.00384 W/kg; SAR(10 g) = 0.00125 W/kg
Maximum value of SAR (measured) = 0.00425 W/kg



P33 WLAN2.4G_802.11b_Left Side_0mm_Ch1_Sample 3_Ant0+1_Battery CK65-BTCS_Holster2_Gun_w

DUT: 191004C23

Communication System: WLAN_2.4G; Frequency: 2412 MHz; Duty Cycle: 1:1.01
Medium: H19T27N1_1021 Medium parameters used: $f = 2412$ MHz; $\sigma = 1.834$ S/m; $\epsilon_r = 39.051$; $\rho = 1000$ kg/m³
Ambient Temperature : 23.7 °C ; Liquid Temperature : 23.1 °C

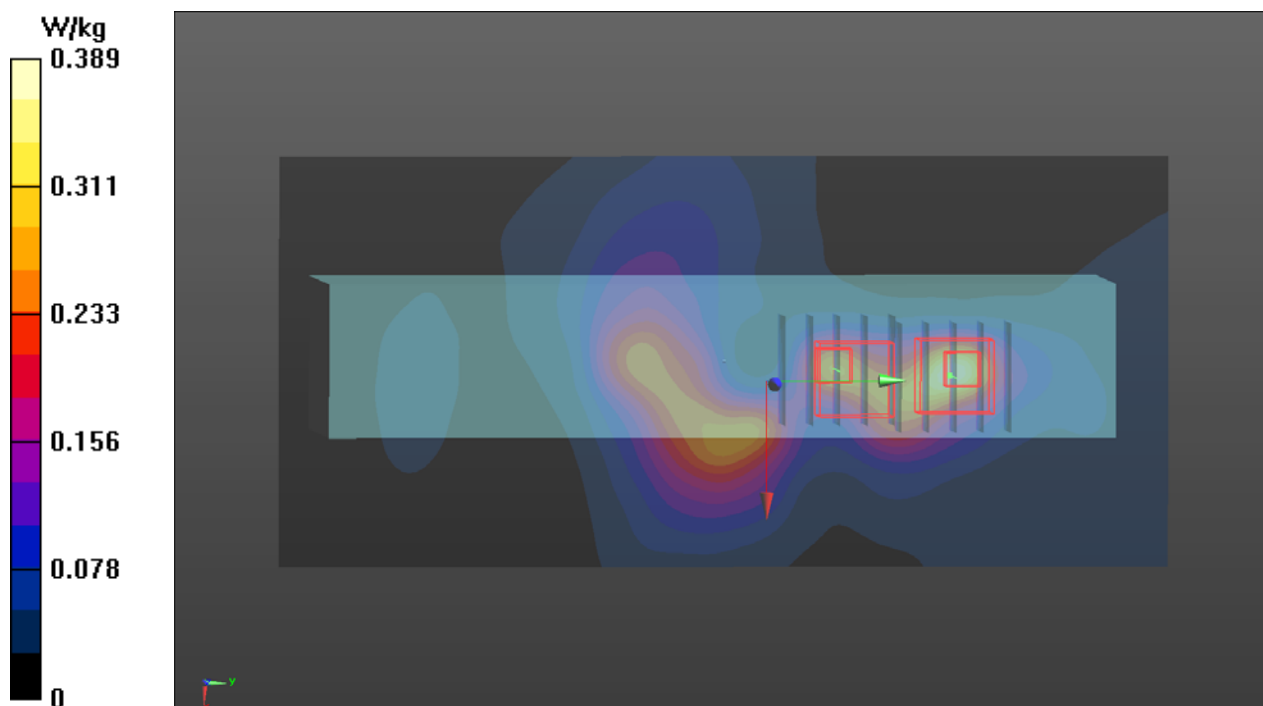
DASY5 Configuration:

- Probe: EX3DV4 - SN7537; ConvF(7.39, 7.39, 7.39); Calibrated: 2019/06/18
- Sensor-Surface: 1.4mm (Mechanical Surface Detection)
- Electronics: DAE4 Sn1585; Calibrated: 2019/06/07
- Phantom: ELI Phantom_2105; Type: QD OVA 004 Ax; Serial: 2105
- Measurement SW: DASY52, Version 52.10 (2); SEMCAD X Version 14.6.12 (7450)

- **Area Scan (103x221x1):** Interpolated grid: dx=1.200 mm, dy=1.200 mm
Maximum value of SAR (interpolated) = 0.389 W/kg

- **Zoom Scan (5x5x7)/Cube 0:** Measurement grid: dx=8mm, dy=8mm, dz=5mm
Reference Value = 14.01 V/m; Power Drift = 0.15 dB
Peak SAR (extrapolated) = 0.432 W/kg
SAR(1 g) = 0.228 W/kg; SAR(10 g) = 0.119 W/kg
Maximum value of SAR (measured) = 0.332 W/kg

- **Zoom Scan (5x5x7)/Cube 1:** Measurement grid: dx=8mm, dy=8mm, dz=5mm
Reference Value = 14.01 V/m; Power Drift = 0.15 dB
Peak SAR (extrapolated) = 0.349 W/kg
SAR(1 g) = 0.185 W/kg; SAR(10 g) = 0.100 W/kg
Maximum value of SAR (measured) = 0.288 W/kg



**P12 WLAN5.2G_802.11ac VHT40_Left Side_0mm_Ch46_Sample
3_Ant0+1_Battery CK65-BTCS_Holster2_Gun_w**

DUT: 191004C23

Communication System: WLAN_5G; Frequency: 5230 MHz; Duty Cycle: 1:1.28

Medium: H34T60N4_1016 Medium parameters used: $f = 5230$ MHz; $\sigma = 4.555$ S/m; $\epsilon_r = 36.672$; $\rho = 1000$ kg/m³

Ambient Temperature : 23.8 °C ; Liquid Temperature : 23.5 °C

DASY5 Configuration:

- Probe: EX3DV4 - SN3971; ConvF(5.12, 5.12, 5.12); Calibrated: 2019/03/29
- Sensor-Surface: 1.4mm (Mechanical Surface Detection)
- Electronics: DAE4 Sn1431; Calibrated: 2019/03/25
- Phantom: ELI Phantom_1245; Type: QDOVA002AA;
- Measurement SW: DASY52, Version 52.10 (2); SEMCAD X Version 14.6.12 (7470)

- **Area Scan (121x261x1):** Interpolated grid: dx=1.000 mm, dy=1.000 mm
Maximum value of SAR (interpolated) = 0.424 W/kg

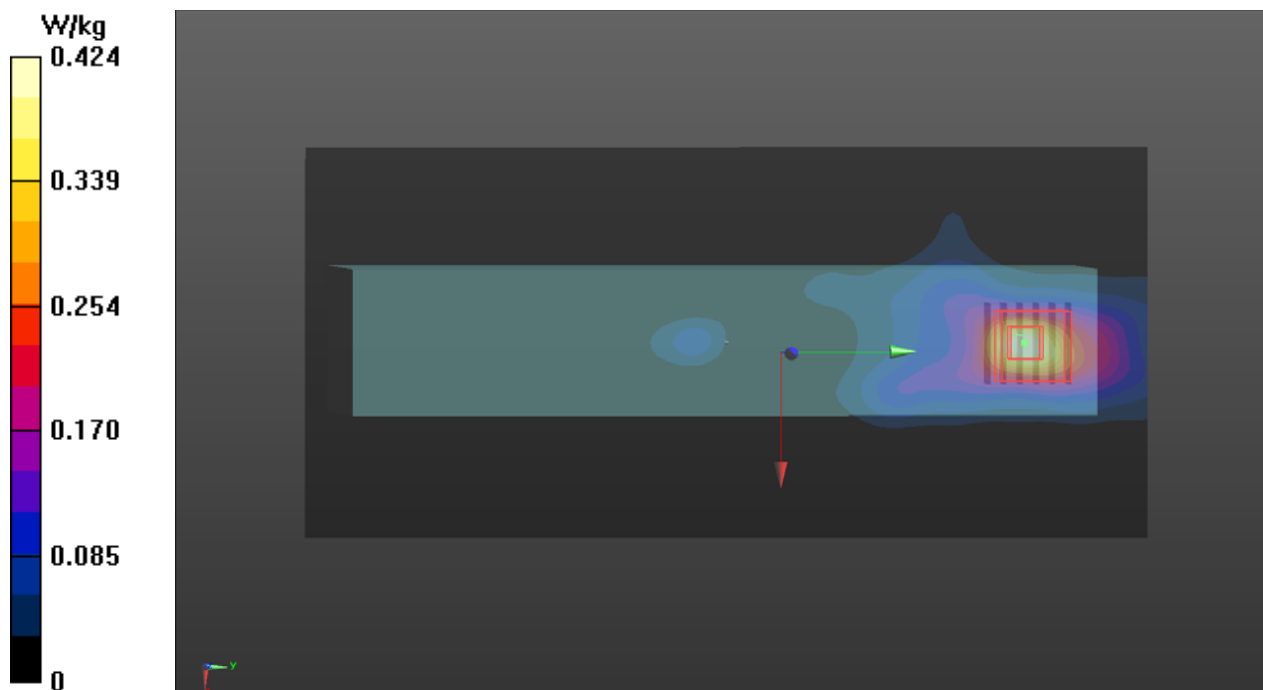
- **Zoom Scan (6x6x12)/Cube 0:** Measurement grid: dx=5mm, dy=5mm, dz=2mm

Reference Value = 10.58 V/m; Power Drift = 0.04 dB

Peak SAR (extrapolated) = 0.598 W/kg

SAR(1 g) = 0.167 W/kg; SAR(10 g) = 0.051 W/kg

Maximum value of SAR (measured) = 0.398 W/kg



P13 WLAN5.6G_802.11ac VHT40_Left Side_0mm_Ch110_Sample3_Ant0+1_Battery CK65-BTCS_Holster2_Gun_w

DUT: 191004C23

Communication System: WLAN_5G; Frequency: 5550 MHz; Duty Cycle: 1:1.28

Medium: H34T60N1_1021 Medium parameters used: $f = 5550$ MHz; $\sigma = 5.221$ S/m; $\epsilon_r = 35.247$; $\rho = 1000$ kg/m³

Ambient Temperature : 23.7 °C ; Liquid Temperature : 23.1 °C

DASY5 Configuration:

- Probe: EX3DV4 - SN7537; ConvF(4.75, 4.75, 4.75); Calibrated: 2019/06/18
- Sensor-Surface: 1.4mm (Mechanical Surface Detection)
- Electronics: DAE4 Sn1585; Calibrated: 2019/06/07
- Phantom: ELI Phantom_2105; Type: QD OVA 004 Ax; Serial: 2105
- Measurement SW: DASY52, Version 52.10 (2); SEMCAD X Version 14.6.12 (7470)

- **Area Scan (121x261x1)**: Interpolated grid: dx=1.000 mm, dy=1.000 mm

Maximum value of SAR (interpolated) = 0.878 W/kg

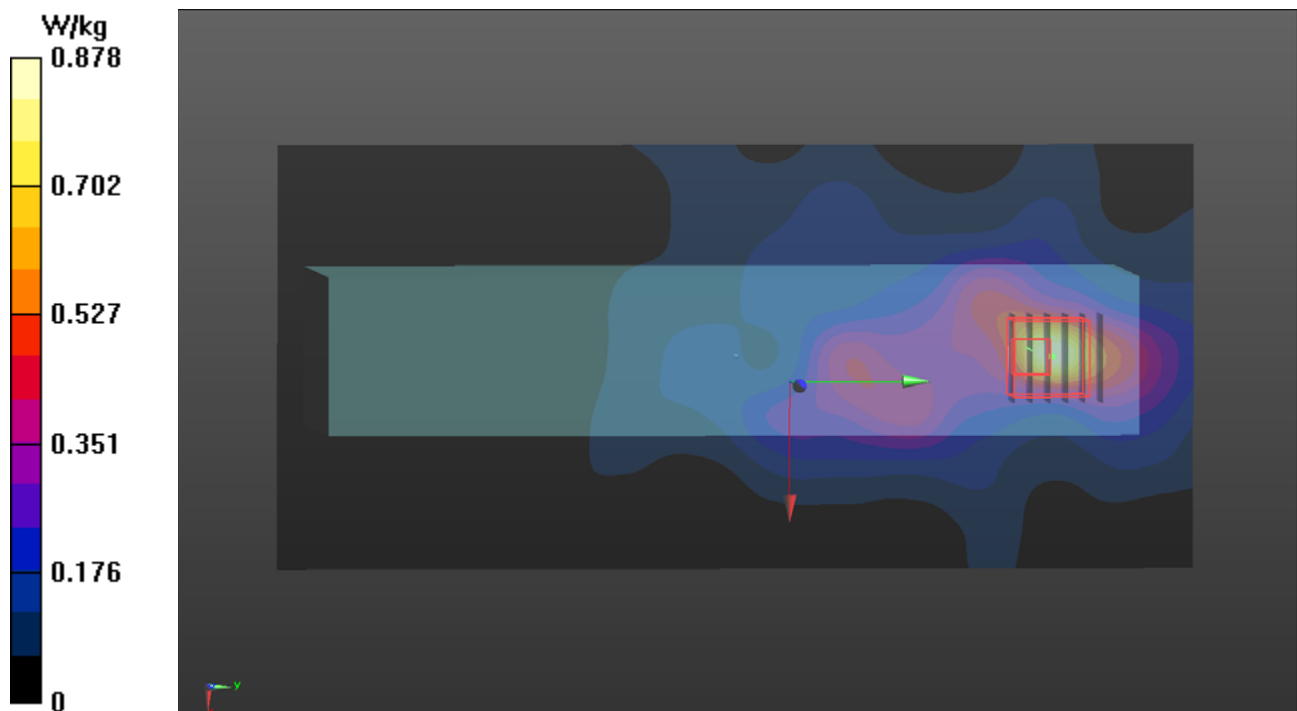
- **Zoom Scan (6x6x12)/Cube 0**: Measurement grid: dx=5mm, dy=5mm, dz=2mm

Reference Value = 14.46 V/m; Power Drift = -0.16 dB

Peak SAR (extrapolated) = 1.99 W/kg

SAR(1 g) = 0.491 W/kg; SAR(10 g) = 0.164 W/kg

Maximum value of SAR (measured) = 1.14 W/kg



P36 WLAN5.8G_802.11ac VHT80_Left Side_0mm_Ch155_Sample3_Ant0+1_Battery CK65-BTCS_Holster2_Gun_w

DUT: 191004C23

Communication System: WLAN_5G; Frequency: 5775 MHz; Duty Cycle: 1:1.56
Medium: H34T60N1_1021 Medium parameters used: $f = 5775$ MHz; $\sigma = 5.473$ S/m; $\epsilon_r = 34.861$; $\rho = 1000$ kg/m³
Ambient Temperature : 23.7 °C ; Liquid Temperature : 23.1 °C

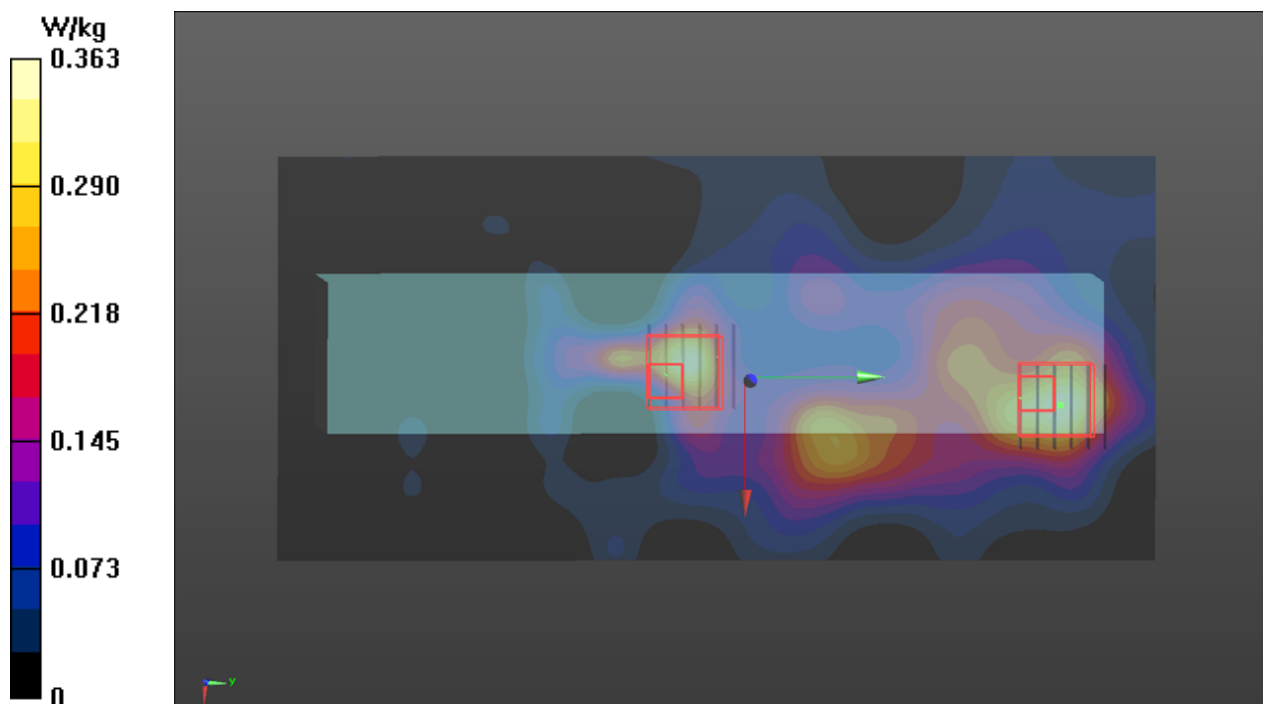
DASY5 Configuration:

- Probe: EX3DV4 - SN7537; ConvF(4.99, 4.99, 4.99); Calibrated: 2019/06/18
- Sensor-Surface: 1.4mm (Mechanical Surface Detection)
- Electronics: DAE4 Sn1585; Calibrated: 2019/06/07
- Phantom: ELI Phantom_2105; Type: QD OVA 004 Ax; Serial: 2105
- Measurement SW: DASY52, Version 52.10 (2); SEMCAD X Version 14.6.12 (7450)

- **Area Scan (121x261x1):** Interpolated grid: dx=1.000 mm, dy=1.000 mm
Maximum value of SAR (interpolated) = 0.363 W/kg

- **Zoom Scan (6x6x12)/Cube 1:** Measurement grid: dx=5mm, dy=5mm, dz=2mm
Reference Value = 9.117 V/m; Power Drift = -0.06 dB
Peak SAR (extrapolated) = 2.15 W/kg
SAR(1 g) = 0.501 W/kg; SAR(10 g) = 0.105 W/kg
Maximum value of SAR (measured) = 1.17 W/kg

- **Zoom Scan (6x6x12)/Cube 0:** Measurement grid: dx=5mm, dy=5mm, dz=2mm
Reference Value = 9.117 V/m; Power Drift = -0.06 dB
Peak SAR (extrapolated) = 2.09 W/kg
SAR(1 g) = 0.178 W/kg; SAR(10 g) = 0.059 W/kg
Maximum value of SAR (measured) = 0.603 W/kg



P15 BT_BDR_Left Side_0mm_Ch78_Sample 3_Ant0_Battery CK65-BTCS_Holster2_Gun_w

DUT: 191004C23

Communication System: BT; Frequency: 2480 MHz; Duty Cycle: 1:1.32

Medium: H19T27N4_1016 Medium parameters used: $f = 2480$ MHz; $\sigma = 1.898$ S/m; $\epsilon_r = 37.834$; $\rho = 1000$ kg/m³

Ambient Temperature : 23.8 °C ; Liquid Temperature : 23.5 °C

DASY5 Configuration:

- Probe: EX3DV4 - SN3971; ConvF(7.65, 7.65, 7.65); Calibrated: 2019/03/29
- Sensor-Surface: 1.4mm (Mechanical Surface Detection)
- Electronics: DAE4 Sn1431; Calibrated: 2019/03/25
- Phantom: ELI Phantom_1245; Type: QDOVA002AA;
- Measurement SW: DASY52, Version 52.10 (2); SEMCAD X Version 14.6.12 (7470)

- **Area Scan (101x221x1):** Interpolated grid: dx=1.200 mm, dy=1.200 mm
Maximum value of SAR (interpolated) = 0.00581 W/kg

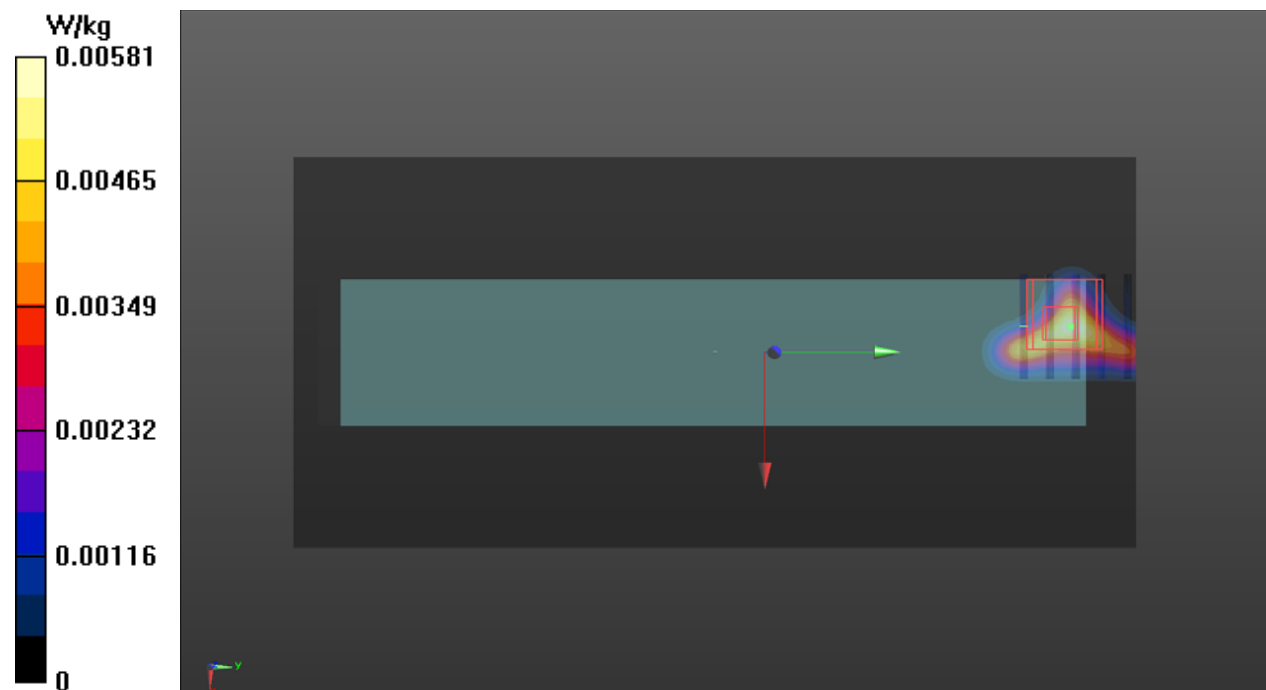
- **Zoom Scan (5x5x7)/Cube 0:** Measurement grid: dx=8mm, dy=8mm, dz=5mm

Reference Value = 1.034 V/m; Power Drift = -0.06 dB

Peak SAR (extrapolated) = 0.00781 W/kg

SAR(1 g) = 0.00233 W/kg; SAR(10 g) = 0.000887 W/kg

Maximum value of SAR (measured) = 0.00426 W/kg



P16 WLAN2.4G_802.11b_Left Side_0mm_Ch1_Sample 4_Ant0+1_Battery CK65-BTCS_Holster2_Gun_w

DUT: 191004C23

Communication System: WLAN_2.4G; Frequency: 2412 MHz; Duty Cycle: 1:1.01
Medium: H19T27N1_1010 Medium parameters used: $f = 2412$ MHz; $\sigma = 1.828$ S/m; $\epsilon_r = 38.231$; $\rho = 1000$ kg/m³
Ambient Temperature : 23.7 °C ; Liquid Temperature : 23.4 °C

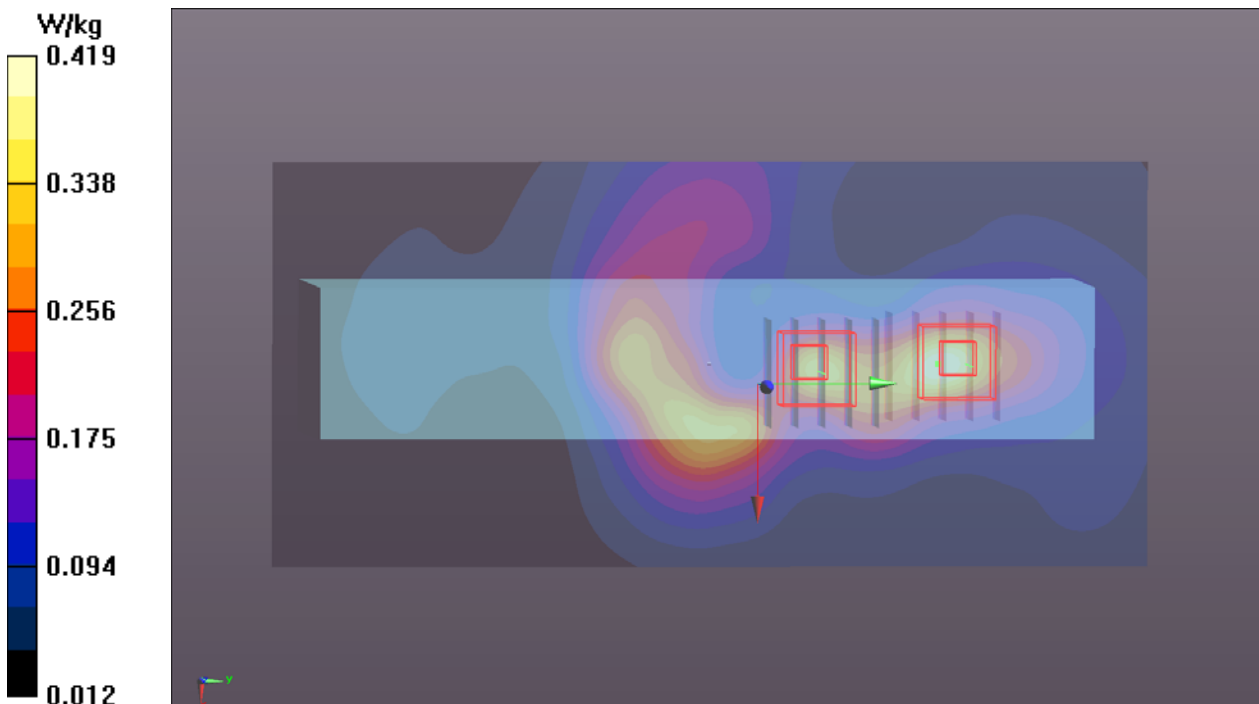
DASY5 Configuration:

- Probe: EX3DV4 - SN7537; ConvF(7.39, 7.39, 7.39); Calibrated: 2019/06/18
- Sensor-Surface: 1.4mm (Mechanical Surface Detection)
- Electronics: DAE4 Sn1585; Calibrated: 2019/06/07
- Phantom: ELI Phantom_1043; Type: QDOVA;
- Measurement SW: DASY52, Version 52.10 (2); SEMCAD X Version 14.6.12 (7450)

- **Area Scan (101x221x1):** Interpolated grid: dx=1.200 mm, dy=1.200 mm
Maximum value of SAR (interpolated) = 0.419 W/kg

- **Zoom Scan (5x5x7)/Cube 0:** Measurement grid: dx=8mm, dy=8mm, dz=5mm
Reference Value = 15.83 V/m; Power Drift = -0.06 dB
Peak SAR (extrapolated) = 0.564 W/kg
SAR(1 g) = 0.442 W/kg; SAR(10 g) = 0.213 W/kg
Maximum value of SAR (measured) = 0.439 W/kg

- **Zoom Scan (5x5x7)/Cube 1:** Measurement grid: dx=8mm, dy=8mm, dz=5mm
Reference Value = 15.83 V/m; Power Drift = -0.06 dB
Peak SAR (extrapolated) = 0.438 W/kg
SAR(1 g) = 0.41 W/kg; SAR(10 g) = 0.196 W/kg
Maximum value of SAR (measured) = 0.333 W/kg



P17 WLAN5.2G_802.11ac VHT40_Left Side_0mm_Ch46_Sample 4_Ant0+1_Battery CK65-BTCS_Holster2_Gun_w

DUT: 191004C23

Communication System: WLAN_5G; Frequency: 5230 MHz; Duty Cycle: 1:1.28

Medium: H34T60N1_1010 Medium parameters used: $f = 5230$ MHz; $\sigma = 4.679$ S/m; $\epsilon_r = 36.292$; $\rho = 1000$ kg/m³

Ambient Temperature : 23.7 °C ; Liquid Temperature : 23.4 °C

DASY5 Configuration:

- Probe: EX3DV4 - SN7537; ConvF(5.36, 5.36, 5.36); Calibrated: 2019/06/18
- Sensor-Surface: 1.4mm (Mechanical Surface Detection)
- Electronics: DAE4 Sn1585; Calibrated: 2019/06/07
- Phantom: ELI Phantom_1043; Type: QDOVA;
- Measurement SW: DASY52, Version 52.10 (2); SEMCAD X Version 14.6.12 (7470)

- **Area Scan (121x261x1):** Interpolated grid: dx=1.000 mm, dy=1.000 mm

Maximum value of SAR (interpolated) = 0.218 W/kg

- **Zoom Scan (6x6x12)/Cube 0:** Measurement grid: dx=5mm, dy=5mm, dz=2mm

Reference Value = 7.715 V/m; Power Drift = 0.01 dB

Peak SAR (extrapolated) = 0.471 W/kg

SAR(1 g) = 0.135 W/kg; SAR(10 g) = 0.052 W/kg

Maximum value of SAR (measured) = 0.296 W/kg

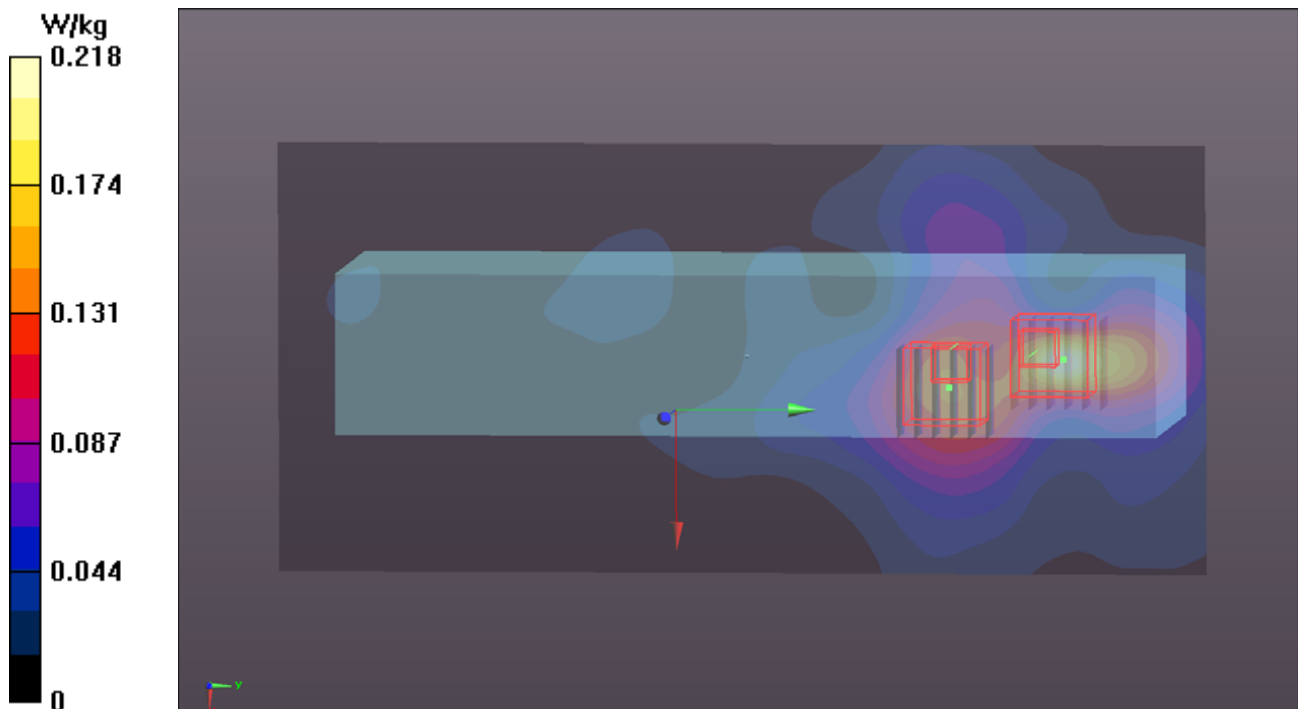
- **Zoom Scan (6x6x12)/Cube 1:** Measurement grid: dx=5mm, dy=5mm, dz=2mm

Reference Value = 7.715 V/m; Power Drift = 0.01 dB

Peak SAR (extrapolated) = 0.247 W/kg

SAR(1 g) = 0.083 W/kg; SAR(10 g) = 0.042 W/kg

Maximum value of SAR (measured) = 0.176 W/kg



P18 WLAN5.6G_802.11ac VHT40_Left Side_0mm_Ch110_Sample 4_Ant0+1_Battery CK65-BTCS_Holster2_Gun_w

DUT: 191004C23

Communication System: WLAN_5G; Frequency: 5550 MHz; Duty Cycle: 1:1.28

Medium: H34T60N1_1018 Medium parameters used: $f = 5550$ MHz; $\sigma = 4.913$ S/m; $\epsilon_r = 35.304$; $\rho = 1000$ kg/m³

Ambient Temperature : 23.6 °C ; Liquid Temperature : 23.3 °C

DASY5 Configuration:

- Probe: EX3DV4 - SN7375; ConvF(4.69, 4.69, 4.69); Calibrated: 2018/12/13
- Sensor-Surface: 1.4mm (Mechanical Surface Detection)
- Electronics: DAE4 Sn1277; Calibrated: 2019/01/24
- Phantom: ELI Phantom_1043; Type: QDOVA;
- Measurement SW: DASY52, Version 52.10 (2); SEMCAD X Version 14.6.12 (7470)

- **Area Scan (121x261x1):** Interpolated grid: dx=1.000 mm, dy=1.000 mm

Maximum value of SAR (interpolated) = 1.26 W/kg

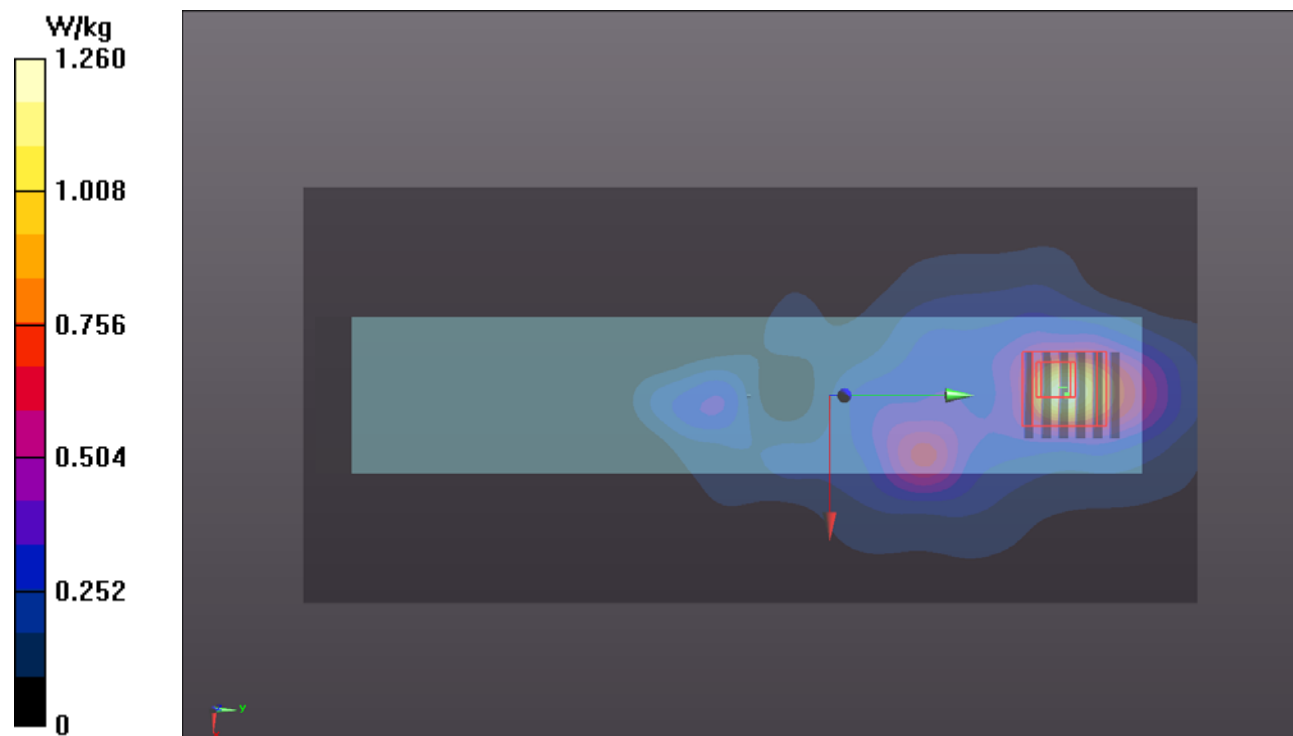
- **Zoom Scan (6x6x12)/Cube 0:** Measurement grid: dx=5mm, dy=5mm, dz=2mm

Reference Value = 17.51 V/m; Power Drift = 0.05 dB

Peak SAR (extrapolated) = 2.85 W/kg

SAR(1 g) = 0.679 W/kg; SAR(10 g) = 0.195 W/kg

Maximum value of SAR (measured) = 1.58 W/kg



P19 WLAN5.8G_802.11ac VHT80_Left Side_0mm_Ch155_Sample 4_Ant0+1_Battery CK65-BTCS_Holster2_Gun_w

DUT: 191004C23

Communication System: WLAN_5G; Frequency: 5775 MHz; Duty Cycle: 1:1.56

Medium: H34T60N1_1010 Medium parameters used: $f = 5775$ MHz; $\sigma = 5.322$ S/m; $\epsilon_r = 35.371$; $\rho = 1000$ kg/m³

Ambient Temperature : 23.7 °C ; Liquid Temperature : 23.4 °C

DASY5 Configuration:

- Probe: EX3DV4 - SN7537; ConvF(4.99, 4.99, 4.99); Calibrated: 2019/06/18
- Sensor-Surface: 1.4mm (Mechanical Surface Detection)
- Electronics: DAE4 Sn1585; Calibrated: 2019/06/07
- Phantom: ELI Phantom_1043; Type: QDOVA;
- Measurement SW: DASY52, Version 52.10 (2); SEMCAD X Version 14.6.12 (7470)

- **Area Scan (121x261x1):** Interpolated grid: dx=1.000 mm, dy=1.000 mm

Maximum value of SAR (interpolated) = 0.640 W/kg

- **Zoom Scan (6x6x12)/Cube 0:** Measurement grid: dx=5mm, dy=5mm, dz=2mm

Reference Value = 11.95 V/m; Power Drift = 0.15 dB

Peak SAR (extrapolated) = 1.28 W/kg

SAR(1 g) = 0.345 W/kg; SAR(10 g) = 0.134 W/kg

Maximum value of SAR (measured) = 0.746 W/kg

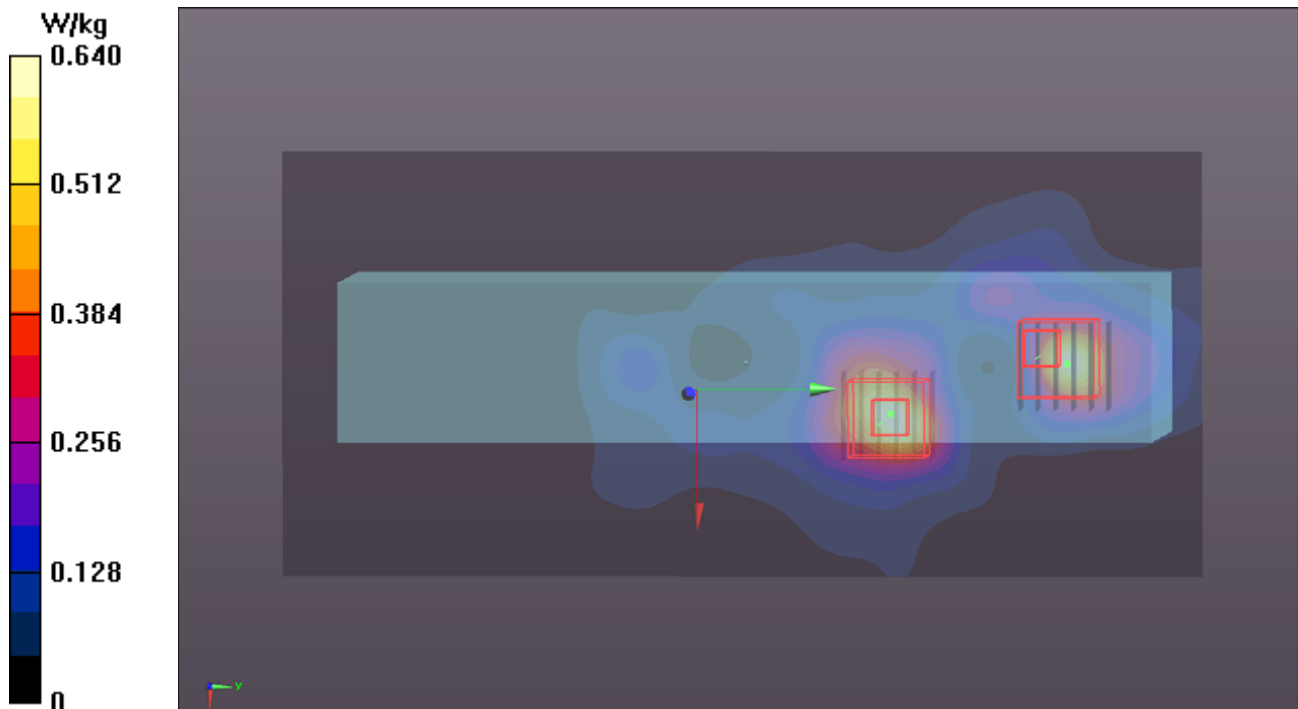
- **Zoom Scan (6x6x12)/Cube 1:** Measurement grid: dx=5mm, dy=5mm, dz=2mm

Reference Value = 11.95 V/m; Power Drift = 0.15 dB

Peak SAR (extrapolated) = 1.76 W/kg

SAR(1 g) = 0.409 W/kg; SAR(10 g) = 0.123 W/kg

Maximum value of SAR (measured) = 0.994 W/kg



P20 BT_BDR_Left Side_0mm_Ch78_Sample 4_Ant0_Battery CK65-BTCS_Holster2_Gun_w

DUT: 191004C23

Communication System: BT; Frequency: 2480 MHz; Duty Cycle: 1:1.32

Medium: H19T27N1_1010 Medium parameters used: $f = 2480$ MHz; $\sigma = 1.895$ S/m; $\epsilon_r = 37.962$; $\rho = 1000$ kg/m³

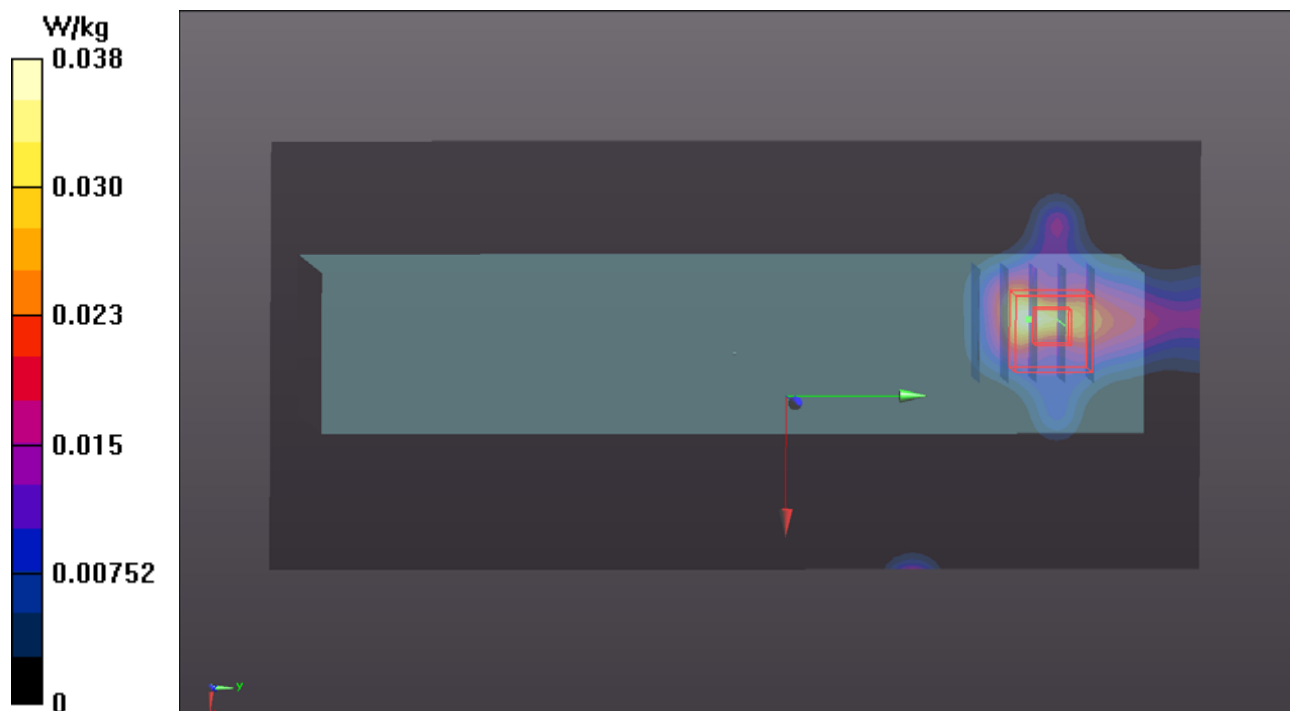
Ambient Temperature : 23.7 °C ; Liquid Temperature : 23.4 °C

DASY5 Configuration:

- Probe: EX3DV4 - SN7537; ConvF(7.39, 7.39, 7.39); Calibrated: 2019/06/18
- Sensor-Surface: 1.4mm (Mechanical Surface Detection)
- Electronics: DAE4 Sn1585; Calibrated: 2019/06/07
- Phantom: ELI Phantom_1043; Type: QDOVA;
- Measurement SW: DASY52, Version 52.10 (2); SEMCAD X Version 14.6.12 (7470)

- **Area Scan (101x221x1):** Interpolated grid: dx=1.200 mm, dy=1.200 mm
Maximum value of SAR (interpolated) = 0.0376 W/kg

- **Zoom Scan (5x5x7)/Cube 0:** Measurement grid: dx=8mm, dy=8mm, dz=5mm
Reference Value = 2.939 V/m; Power Drift = -0.16 dB
Peak SAR (extrapolated) = 0.0200 W/kg
SAR(1 g) = 0.011 W/kg; SAR(10 g) = 0.00683 W/kg
Maximum value of SAR (measured) = 0.0166 W/kg



P21 WLAN2.4G_802.11b_Left Side_0mm_Ch1_Sample 5_Ant0+1_Battery CK65-BTCS_Holster2_Gun_w

DUT: 191004C23

Communication System: WLAN_2.4G; Frequency: 2412 MHz; Duty Cycle: 1:1.01
Medium: H19T27N1_1010 Medium parameters used: $f = 2412$ MHz; $\sigma = 1.828$ S/m; $\epsilon_r = 38.231$; $\rho = 1000$ kg/m³
Ambient Temperature : 23.7 °C ; Liquid Temperature : 23.4 °C

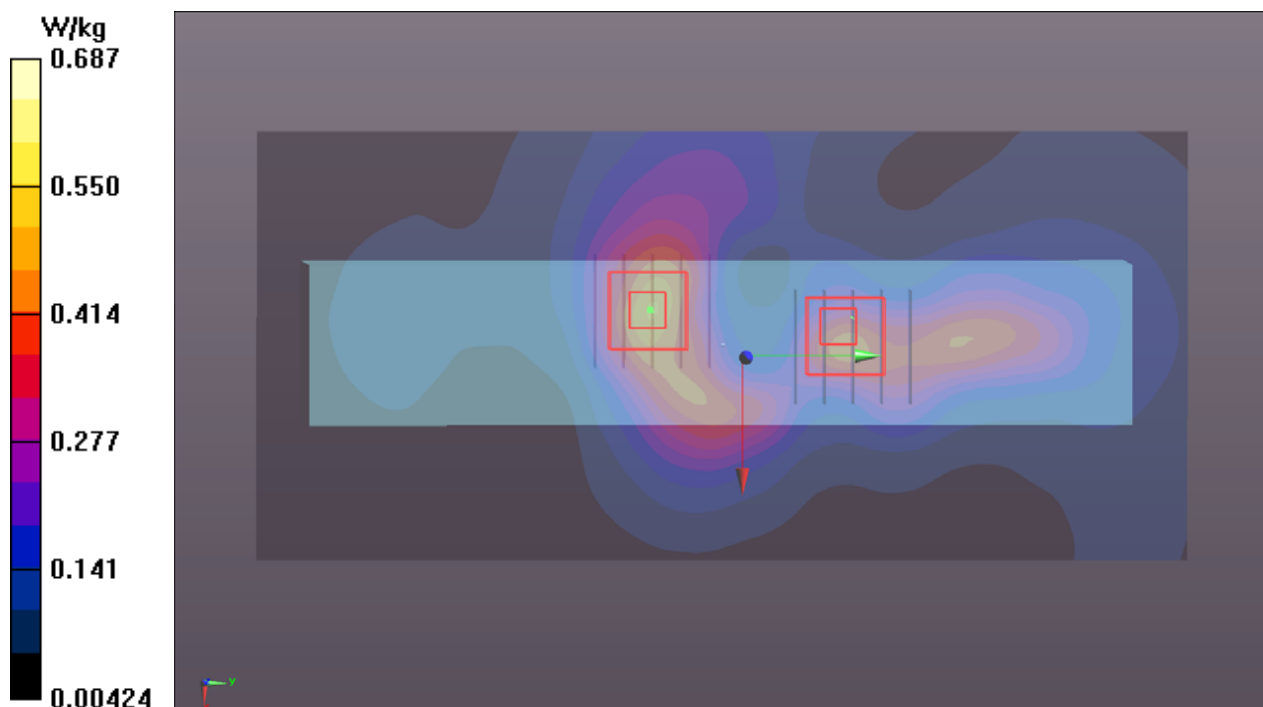
DASY5 Configuration:

- Probe: EX3DV4 - SN7537; ConvF(7.39, 7.39, 7.39); Calibrated: 2019/06/18
- Sensor-Surface: 1.4mm (Mechanical Surface Detection)
- Electronics: DAE4 Sn1585; Calibrated: 2019/06/07
- Phantom: ELI Phantom_1043; Type: QDOVA;
- Measurement SW: DASY52, Version 52.10 (2); SEMCAD X Version 14.6.12 (7450)

- **Area Scan (101x221x1):** Interpolated grid: dx=1.200 mm, dy=1.200 mm
Maximum value of SAR (interpolated) = 0.512 W/kg

- **Zoom Scan (5x5x7)/Cube 0:** Measurement grid: dx=8mm, dy=8mm, dz=5mm
Reference Value = 15.54 V/m; Power Drift = 0.05 dB
Peak SAR (extrapolated) = 0.938 W/kg
SAR(1 g) = 0.353 W/kg; SAR(10 g) = 0.169 W/kg
Maximum value of SAR (measured) = 0.687 W/kg

- **Zoom Scan (5x5x7)/Cube 1:** Measurement grid: dx=8mm, dy=8mm, dz=5mm
Reference Value = 15.54 V/m; Power Drift = 0.05 dB
Peak SAR (extrapolated) = 0.599 W/kg
SAR(1 g) = 0.288 W/kg; SAR(10 g) = 0.149 W/kg
Maximum value of SAR (measured) = 0.452 W/kg



P22 WLAN5.2G_802.11ac VHT40_Left Side_0mm_Ch46_Sample 5_Ant0+1_Battery CK65-BTCS_Holster2_Gun_w

DUT: 191004C23

Communication System: WLAN_5G; Frequency: 5230 MHz; Duty Cycle: 1:1.28

Medium: H34T60N1_1010 Medium parameters used: $f = 5230$ MHz; $\sigma = 4.679$ S/m; $\epsilon_r = 36.292$; $\rho = 1000$ kg/m³

Ambient Temperature : 23.7 °C ; Liquid Temperature : 23.4 °C

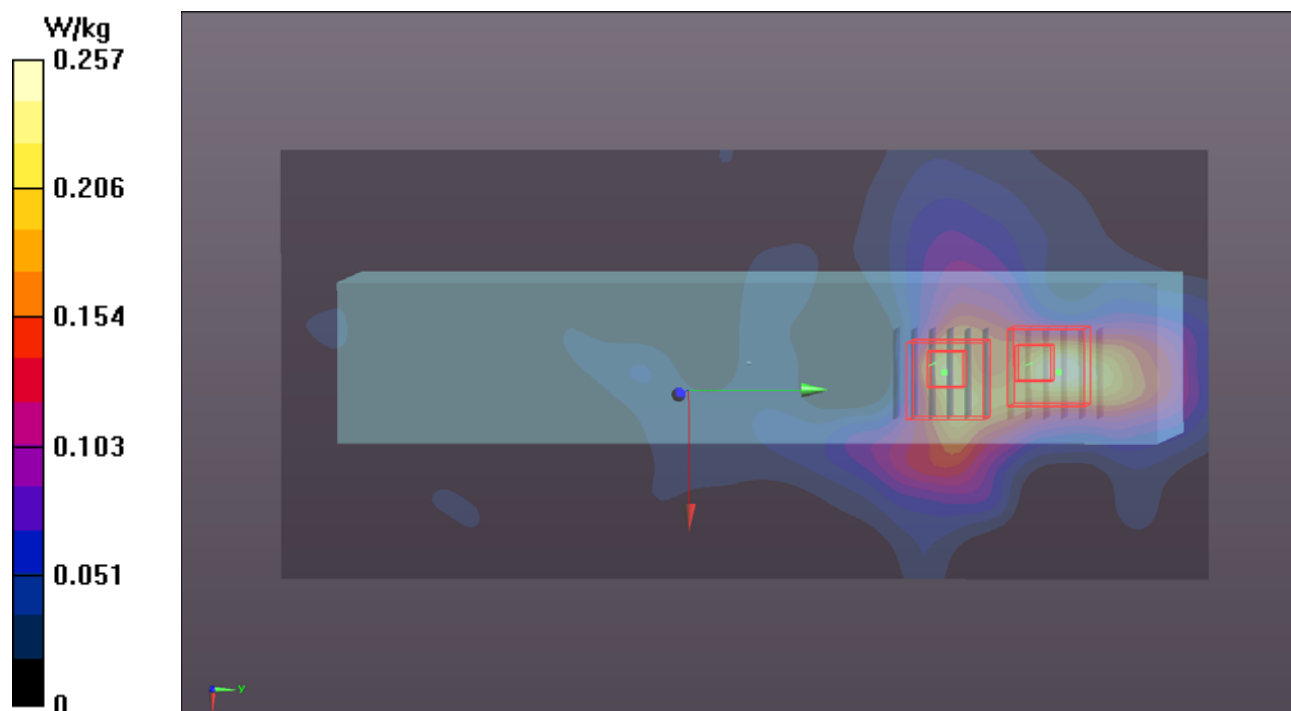
DASY5 Configuration:

- Probe: EX3DV4 - SN7537; ConvF(5.36, 5.36, 5.36); Calibrated: 2019/06/18
- Sensor-Surface: 1.4mm (Mechanical Surface Detection)
- Electronics: DAE4 Sn1585; Calibrated: 2019/06/07
- Phantom: ELI Phantom_1043; Type: QDOVA;
- Measurement SW: DASY52, Version 52.10 (2); SEMCAD X Version 14.6.12 (7470)

- **Area Scan (121x261x1):** Interpolated grid: dx=1.000 mm, dy=1.000 mm
Maximum value of SAR (interpolated) = 0.257 W/kg

- **Zoom Scan (6x6x12)/Cube 0:** Measurement grid: dx=5mm, dy=5mm, dz=2mm
Reference Value = 8.278 V/m; Power Drift = -0.10 dB
Peak SAR (extrapolated) = 0.568 W/kg
SAR(1 g) = 0.161 W/kg; SAR(10 g) = 0.060 W/kg
Maximum value of SAR (measured) = 0.367 W/kg

- **Zoom Scan (6x6x12)/Cube 1:** Measurement grid: dx=5mm, dy=5mm, dz=2mm
Reference Value = 8.278 V/m; Power Drift = -0.10 dB
Peak SAR (extrapolated) = 0.292 W/kg
SAR(1 g) = 0.095 W/kg; SAR(10 g) = 0.044 W/kg
Maximum value of SAR (measured) = 0.193 W/kg



P23 WLAN5.6G_802.11ac VHT40_Left Side_0mm_Ch110_Sample 5_Ant0+1_Battery CK65-BTCS_Holster2_Gun_w

DUT: 191004C23

Communication System: WLAN_5G; Frequency: 5550 MHz; Duty Cycle: 1:1.28

Medium: H34T60N1_1010 Medium parameters used: $f = 5550$ MHz; $\sigma = 5.062$ S/m; $\epsilon_r = 35.77$; $\rho = 1000$ kg/m³

Ambient Temperature : 23.7 °C ; Liquid Temperature : 23.4 °C

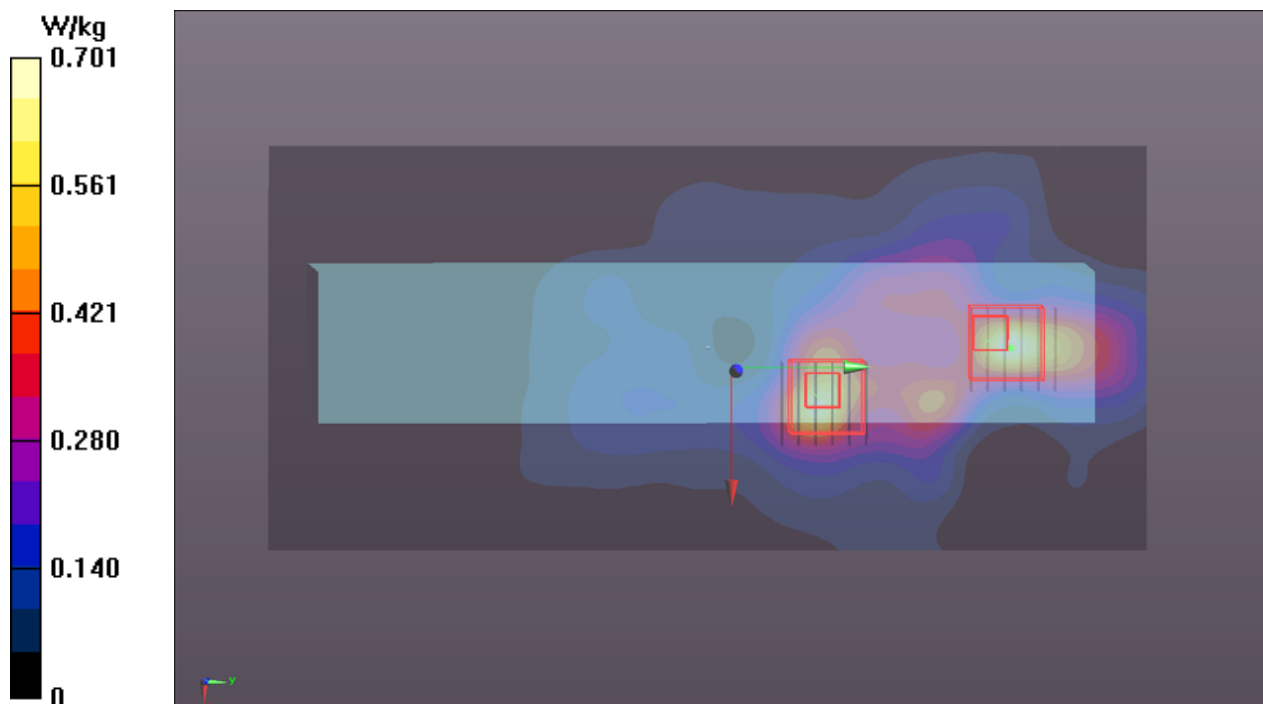
DASY5 Configuration:

- Probe: EX3DV4 - SN7537; ConvF(4.75, 4.75, 4.75); Calibrated: 2019/06/18
- Sensor-Surface: 1.4mm (Mechanical Surface Detection)
- Electronics: DAE4 Sn1585; Calibrated: 2019/06/07
- Phantom: ELI Phantom_1043; Type: QDOVA;
- Measurement SW: DASY52, Version 52.10 (2); SEMCAD X Version 14.6.12 (7450)

- **Area Scan (121x261x1):** Interpolated grid: dx=1.000 mm, dy=1.000 mm
Maximum value of SAR (interpolated) = 0.701 W/kg

- **Zoom Scan (6x6x12)/Cube 0:** Measurement grid: dx=5mm, dy=5mm, dz=2mm
Reference Value = 13.11 V/m; Power Drift = 0.01 dB
Peak SAR (extrapolated) = 1.84 W/kg
SAR(1 g) = 0.423 W/kg; SAR(10 g) = 0.136 W/kg
Maximum value of SAR (measured) = 0.968 W/kg

- **Zoom Scan (6x6x12)/Cube 1:** Measurement grid: dx=5mm, dy=5mm, dz=2mm
Reference Value = 13.11 V/m; Power Drift = 0.01 dB
Peak SAR (extrapolated) = 1.41 W/kg
SAR(1 g) = 0.397 W/kg; SAR(10 g) = 0.154 W/kg
Maximum value of SAR (measured) = 0.838 W/kg



P24 WLAN5.8G_802.11ac VHT80_Left Side_0mm_Ch155_Sample 5_Ant0+1_Battery CK65-BTCS_Holster2_Gun_w

DUT: 191004C23

Communication System: WLAN_5G; Frequency: 5775 MHz; Duty Cycle: 1:1.56

Medium: H34T60N1_1010 Medium parameters used: $f = 5775$ MHz; $\sigma = 5.322$ S/m; $\epsilon_r = 35.371$; $\rho = 1000$ kg/m³

Ambient Temperature : 23.7 °C ; Liquid Temperature : 23.4 °C

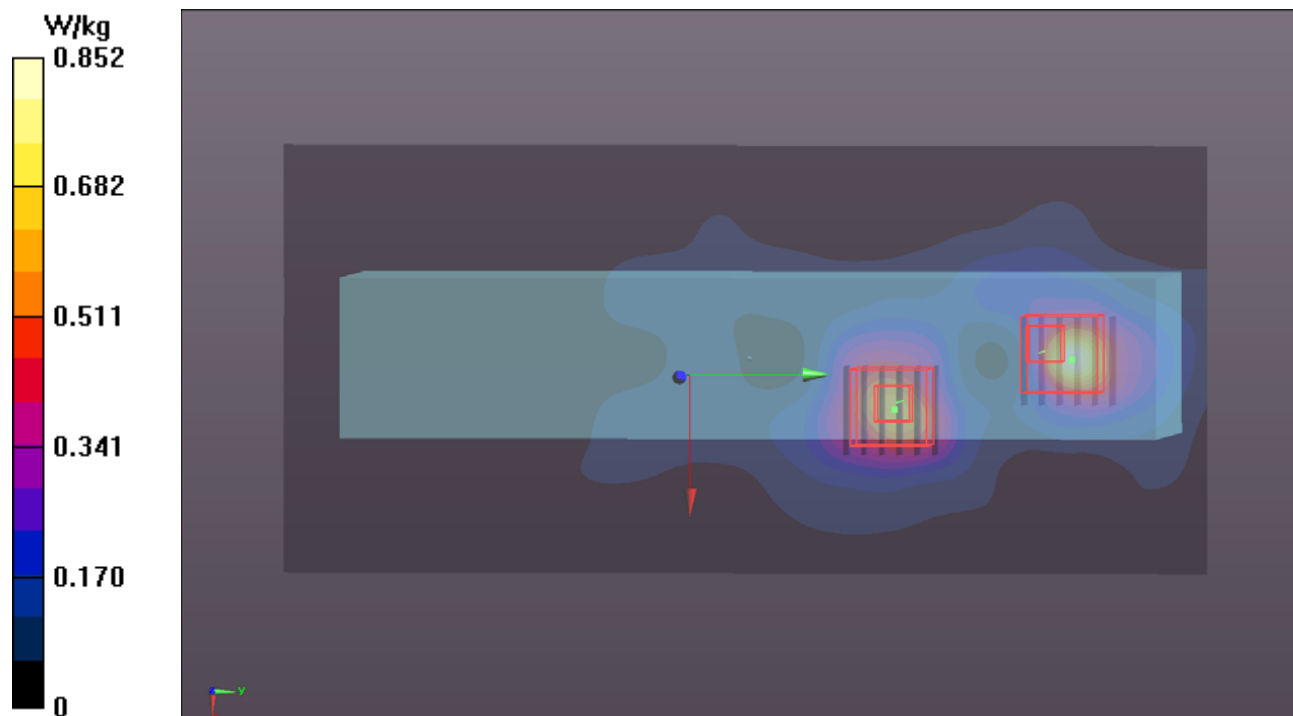
DASY5 Configuration:

- Probe: EX3DV4 - SN7537; ConvF(4.99, 4.99, 4.99); Calibrated: 2019/06/18
- Sensor-Surface: 1.4mm (Mechanical Surface Detection)
- Electronics: DAE4 Sn1585; Calibrated: 2019/06/07
- Phantom: ELI Phantom_1043; Type: QDOVA;
- Measurement SW: DASY52, Version 52.10 (2); SEMCAD X Version 14.6.12 (7470)

- **Area Scan (121x261x1):** Interpolated grid: dx=1.000 mm, dy=1.000 mm
Maximum value of SAR (interpolated) = 0.852 W/kg

- **Zoom Scan (6x6x12)/Cube 0:** Measurement grid: dx=5mm, dy=5mm, dz=2mm
Reference Value = 13.75 V/m; Power Drift = -0.08 dB
Peak SAR (extrapolated) = 2.47 W/kg
SAR(1 g) = 0.560 W/kg; SAR(10 g) = 0.162 W/kg
Maximum value of SAR (measured) = 1.37 W/kg

- **Zoom Scan (6x6x12)/Cube 1:** Measurement grid: dx=5mm, dy=5mm, dz=2mm
Reference Value = 13.75 V/m; Power Drift = -0.08 dB
Peak SAR (extrapolated) = 1.54 W/kg
SAR(1 g) = 0.415 W/kg; SAR(10 g) = 0.162 W/kg
Maximum value of SAR (measured) = 0.907 W/kg



P25 BT_BDR_Left Side_0mm_Ch78_Sample 5_Ant0_Battery CK65-BTCS_Holster2_Gun_w

DUT: 191004C23

Communication System: BT; Frequency: 2480 MHz; Duty Cycle: 1:1.32

Medium: H19T27N1_1010 Medium parameters used: $f = 2480$ MHz; $\sigma = 1.895$ S/m; $\epsilon_r = 37.962$; $\rho = 1000$ kg/m³

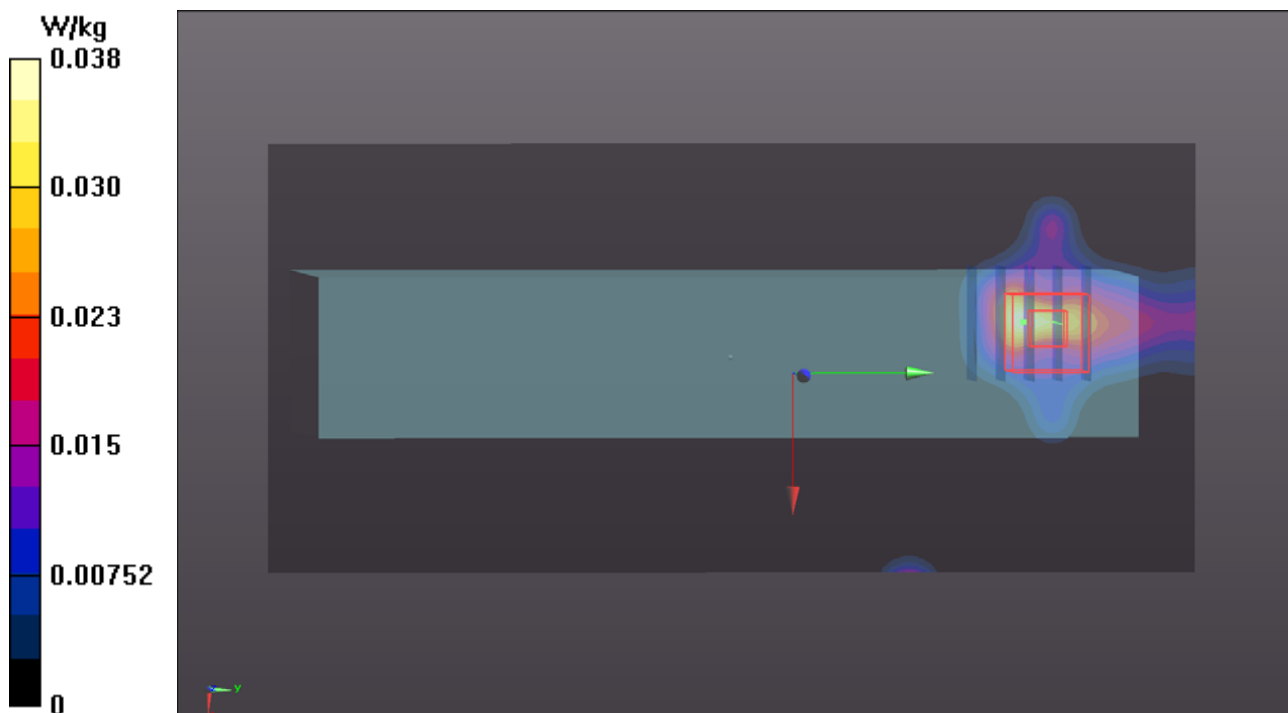
Ambient Temperature : 23.7 °C ; Liquid Temperature : 23.4 °C

DASY5 Configuration:

- Probe: EX3DV4 - SN7537; ConvF(7.39, 7.39, 7.39); Calibrated: 2019/06/18
- Sensor-Surface: 1.4mm (Mechanical Surface Detection)
- Electronics: DAE4 Sn1585; Calibrated: 2019/06/07
- Phantom: ELI Phantom_1043; Type: QDOVA;
- Measurement SW: DASY52, Version 52.10 (2); SEMCAD X Version 14.6.12 (7470)

- **Area Scan (101x221x1):** Interpolated grid: dx=1.200 mm, dy=1.200 mm
Maximum value of SAR (interpolated) = 0.0376 W/kg

- **Zoom Scan (5x5x7)/Cube 0:** Measurement grid: dx=8mm, dy=8mm, dz=5mm
Reference Value = 2.939 V/m; Power Drift = -0.11 dB
Peak SAR (extrapolated) = 0.0200 W/kg
SAR(1 g) = 0.00513 W/kg; SAR(10 g) = 0.00329 W/kg
Maximum value of SAR (measured) = 0.0166 W/kg



P26 WLAN2.4G_802.11b_Left Side_0mm_Ch1_Sample 6_Ant0+1_Battery CK65-BTCS_Holster2_Gun_w

DUT: 191004C23

Communication System: WLAN_2.4G; Frequency: 2412 MHz; Duty Cycle: 1:1.01

Medium: H19T27N1_1009 Medium parameters used: $f = 2412$ MHz; $\sigma = 1.816$ S/m; $\epsilon_r = 39.196$; $\rho = 1000$ kg/m³

Ambient Temperature : 23.6 °C ; Liquid Temperature : 23.3 °C

DASY5 Configuration:

- Probe: EX3DV4 - SN7537; ConvF(7.39, 7.39, 7.39); Calibrated: 2019/06/18
- Sensor-Surface: 1.4mm (Mechanical Surface Detection)
- Electronics: DAE4 Sn1585; Calibrated: 2019/06/07
- Phantom: ELI Phantom_2105; Type: QD OVA 004 Ax; Serial: 2105
- Measurement SW: DASY52, Version 52.10 (2); SEMCAD X Version 14.6.12 (7470)

- **Area Scan (101x221x1):** Interpolated grid: dx=1.200 mm, dy=1.200 mm

Maximum value of SAR (interpolated) = 0.490 W/kg

- **Zoom Scan (5x5x7)/Cube 0:** Measurement grid: dx=8mm, dy=8mm, dz=5mm

Reference Value = 16.24 V/m; Power Drift = -0.12 dB

Peak SAR (extrapolated) = 0.631 W/kg

SAR(1 g) = 0.327 W/kg; SAR(10 g) = 0.161 W/kg

Maximum value of SAR (measured) = 0.504 W/kg

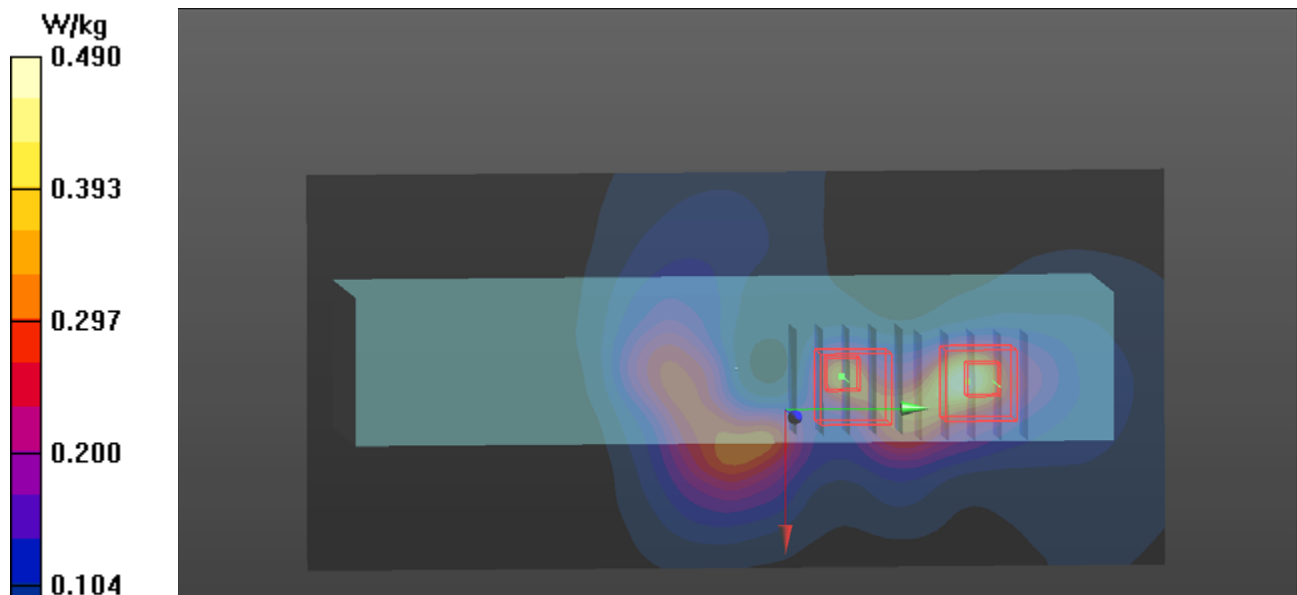
- **Zoom Scan (5x5x7)/Cube 1:** Measurement grid: dx=8mm, dy=8mm, dz=5mm

Reference Value = 16.24 V/m; Power Drift = -0.12 dB

Peak SAR (extrapolated) = 0.430 W/kg

SAR(1 g) = 0.225 W/kg; SAR(10 g) = 0.119 W/kg

Maximum value of SAR (measured) = 0.354 W/kg



P27 WLAN5.2G_802.11ac VHT40_Left Side_0mm_Ch46_Sample 6_Ant0+1_Battery CK65-BTCS_Holster2_Gun_w

DUT: 191004C23

Communication System: WLAN_5G; Frequency: 5230 MHz; Duty Cycle: 1:1.28

Medium: H34T60N1_1009 Medium parameters used: $f = 5230$ MHz; $\sigma = 4.834$ S/m; $\epsilon_r = 35.748$; $\rho = 1000$ kg/m³

Ambient Temperature : 23.6 °C ; Liquid Temperature : 23.3 °C

DASY5 Configuration:

- Probe: EX3DV4 - SN7537; ConvF(5.36, 5.36, 5.36); Calibrated: 2019/06/18
- Sensor-Surface: 1.4mm (Mechanical Surface Detection)
- Electronics: DAE4 Sn1585; Calibrated: 2019/06/07
- Phantom: ELI Phantom_2105; Type: QD OVA 004 Ax; Serial: 2105
- Measurement SW: DASY52, Version 52.10 (2); SEMCAD X Version 14.6.12 (7470)

- **Area Scan (121x261x1)**: Interpolated grid: dx=1.000 mm, dy=1.000 mm

Maximum value of SAR (interpolated) = 0.267 W/kg

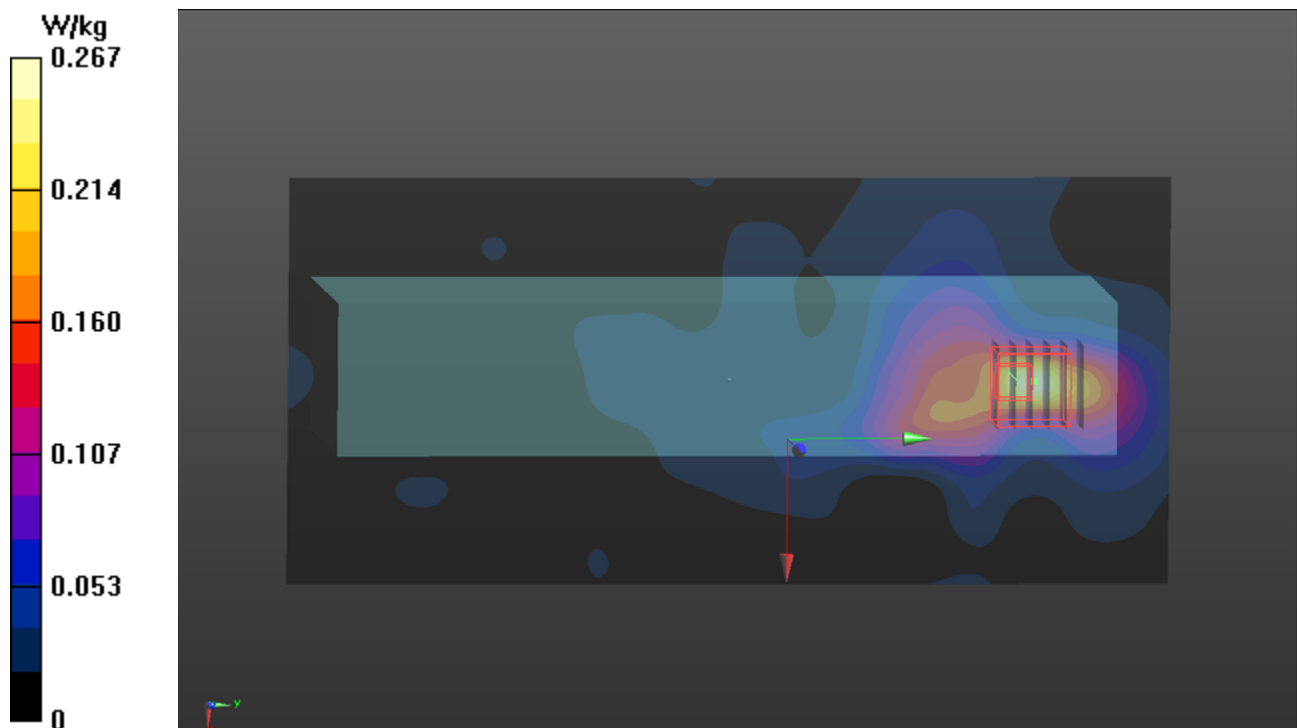
- **Zoom Scan (6x6x12)/Cube 0**: Measurement grid: dx=5mm, dy=5mm, dz=2mm

Reference Value = 8.416 V/m; Power Drift = -0.11 dB

Peak SAR (extrapolated) = 0.582 W/kg

SAR(1 g) = 0.131 W/kg; SAR(10 g) = 0.047 W/kg

Maximum value of SAR (measured) = 0.359 W/kg



P28 WLAN5.6G_802.11ac VHT40_Left Side_0mm_Ch110_Sample 6_Ant0+1_Battery CK65-BTCS_Holster2_Gun_w

DUT: 1910045C23

Communication System: WLAN_5G; Frequency: 5550 MHz; Duty Cycle: 1:1.28

Medium: H34T60N1_1009 Medium parameters used: $f = 5550$ MHz; $\sigma = 5.129$ S/m; $\epsilon_r = 35.241$; $\rho = 1000$ kg/m³

Ambient Temperature : 23.6 °C ; Liquid Temperature : 23.3 °C

DASY5 Configuration:

- Probe: EX3DV4 - SN7537; ConvF(4.75, 4.75, 4.75); Calibrated: 2019/06/18
- Sensor-Surface: 1.4mm (Mechanical Surface Detection)
- Electronics: DAE4 Sn1585; Calibrated: 2019/06/07
- Phantom: ELI Phantom_2105; Type: QD OVA 004 Ax; Serial: 2105
- Measurement SW: DASY52, Version 52.10 (2); SEMCAD X Version 14.6.12 (7470)

- **Area Scan (121x261x1)**: Interpolated grid: dx=1.000 mm, dy=1.000 mm

Maximum value of SAR (interpolated) = 1.21 W/kg

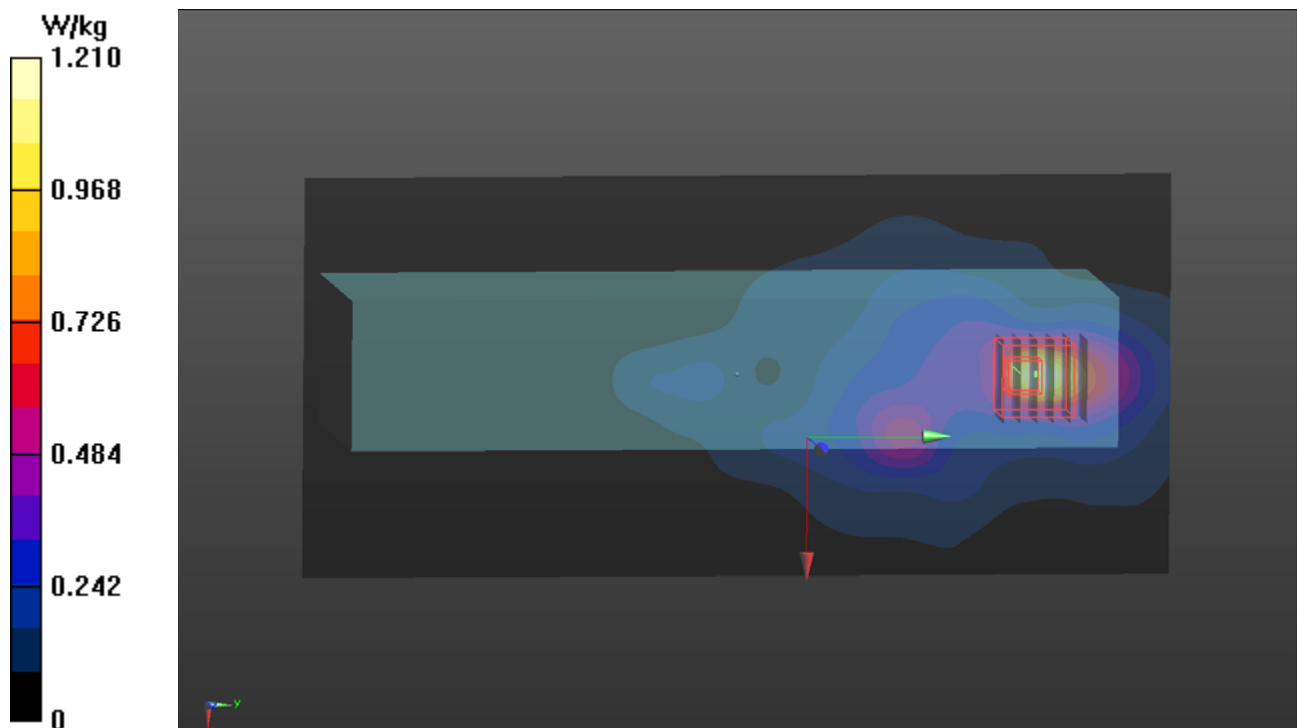
- **Zoom Scan (6x6x12)/Cube 0**: Measurement grid: dx=5mm, dy=5mm, dz=2mm

Reference Value = 17.00 V/m; Power Drift = -0.10 dB

Peak SAR (extrapolated) = 2.46 W/kg

SAR(1 g) = 0.565 W/kg; SAR(10 g) = 0.172 W/kg

Maximum value of SAR (measured) = 1.32 W/kg



P29 WLAN5.8G_802.11ac VHT80_Left Side_0mm_Ch155_Sample 6_Ant0+1_Battery CK65-BTCS_Holster2_Gun_w

DUT: 191004C23

Communication System: WLAN_5G; Frequency: 5775 MHz; Duty Cycle: 1:1.56

Medium: H34T60N1_1009 Medium parameters used: $f = 5775$ MHz; $\sigma = 5.347$ S/m; $\epsilon_r = 34.901$; $\rho = 1000$ kg/m³

Ambient Temperature : 23.6 °C ; Liquid Temperature : 23.3 °C

DASY5 Configuration:

- Probe: EX3DV4 - SN7537; ConvF(4.99, 4.99, 4.99); Calibrated: 2019/06/18
- Sensor-Surface: 1.4mm (Mechanical Surface Detection)
- Electronics: DAE4 Sn1585; Calibrated: 2019/06/07
- Phantom: ELI Phantom_2105; Type: QD OVA 004 Ax; Serial: 2105
- Measurement SW: DASY52, Version 52.10 (2); SEMCAD X Version 14.6.12 (7470)

- **Area Scan (121x261x1)**: Interpolated grid: dx=1.000 mm, dy=1.000 mm

Maximum value of SAR (interpolated) = 1.44 W/kg

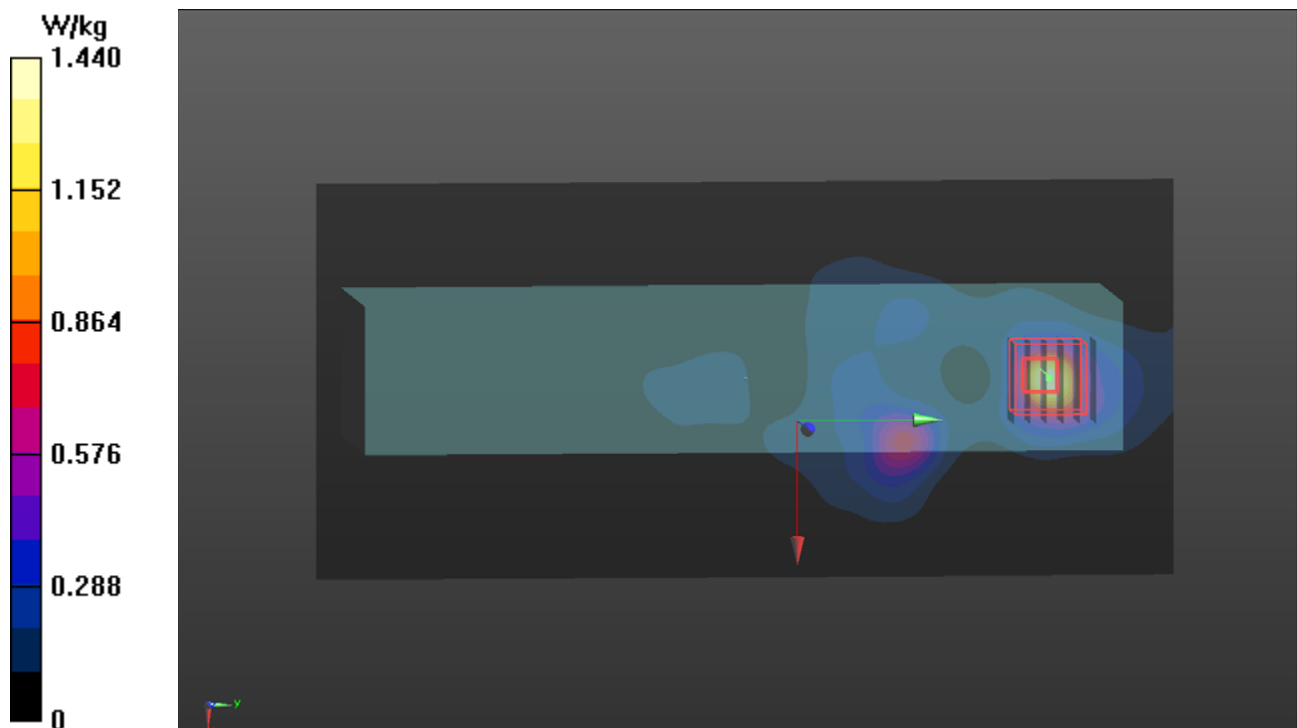
- **Zoom Scan (6x6x12)/Cube 0**: Measurement grid: dx=5mm, dy=5mm, dz=2mm

Reference Value = 17.79 V/m; Power Drift = -0.01 dB

Peak SAR (extrapolated) = 2.36 W/kg

SAR(1 g) = 0.538 W/kg; SAR(10 g) = 0.153 W/kg

Maximum value of SAR (measured) = 1.34 W/kg



P30 BT_BDR_Left Side_0mm_Ch78_Sample 6_Ant0_Battery CK65-BTCS_Holster2_Gun_w

DUT: 191004C23

Communication System: BT; Frequency: 2480 MHz; Duty Cycle: 1:1.32

Medium: H19T27N1_1010 Medium parameters used: $f = 2480$ MHz; $\sigma = 1.895$ S/m; $\epsilon_r = 37.962$; $\rho = 1000$ kg/m³

Ambient Temperature : 23.7 °C ; Liquid Temperature : 23.4 °C

DASY5 Configuration:

- Probe: EX3DV4 - SN7537; ConvF(7.39, 7.39, 7.39); Calibrated: 2019/06/18
- Sensor-Surface: 1.4mm (Mechanical Surface Detection)
- Electronics: DAE4 Sn1585; Calibrated: 2019/06/07
- Phantom: ELI Phantom_1043; Type: QDOVA;
- Measurement SW: DASY52, Version 52.10 (2); SEMCAD X Version 14.6.12 (7470)

- **Area Scan (101x221x1):** Interpolated grid: dx=1.200 mm, dy=1.200 mm

Maximum value of SAR (interpolated) = 0.0252 W/kg

- **Zoom Scan (5x5x7)/Cube 0:** Measurement grid: dx=8mm, dy=8mm, dz=5mm

Reference Value = 2.668 V/m; Power Drift = 0.17 dB

Peak SAR (extrapolated) = 0.0170 W/kg

SAR(1 g) = 0.010 W/kg; SAR(10 g) = 0.00625 W/kg

Maximum value of SAR (measured) = 0.0148 W/kg

