

Dolphin[®] 75e Paris WLAN/BT Internal Photographs Non-NFC Model 75eL00

| Revision History | | | |
|------------------|-----------------|------------|--------|
| Ver. | Description | Date | Author |
| 1.0 | Initial Release | 10/30/2014 | JPW |
| | | | |
| | | | |
| | | | |
| | | | |
| | | | |
| | | | |
| | | | |
| | | | |
| | | | |
| | | | |

*Contains Information proprietary to
Honeywell, Inc.*

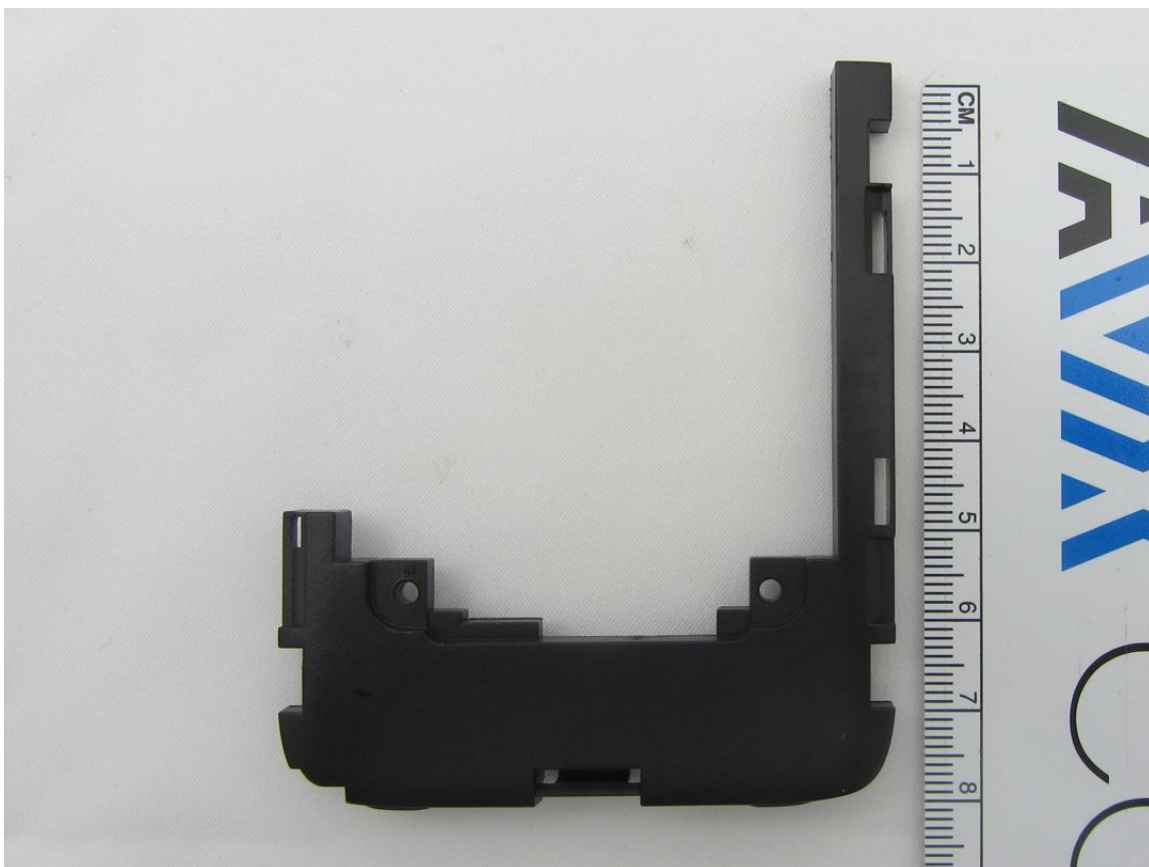
Dolphin 75e Paris WLAN/BT Photographs

Brand Name Honeywell
Model 75eL00

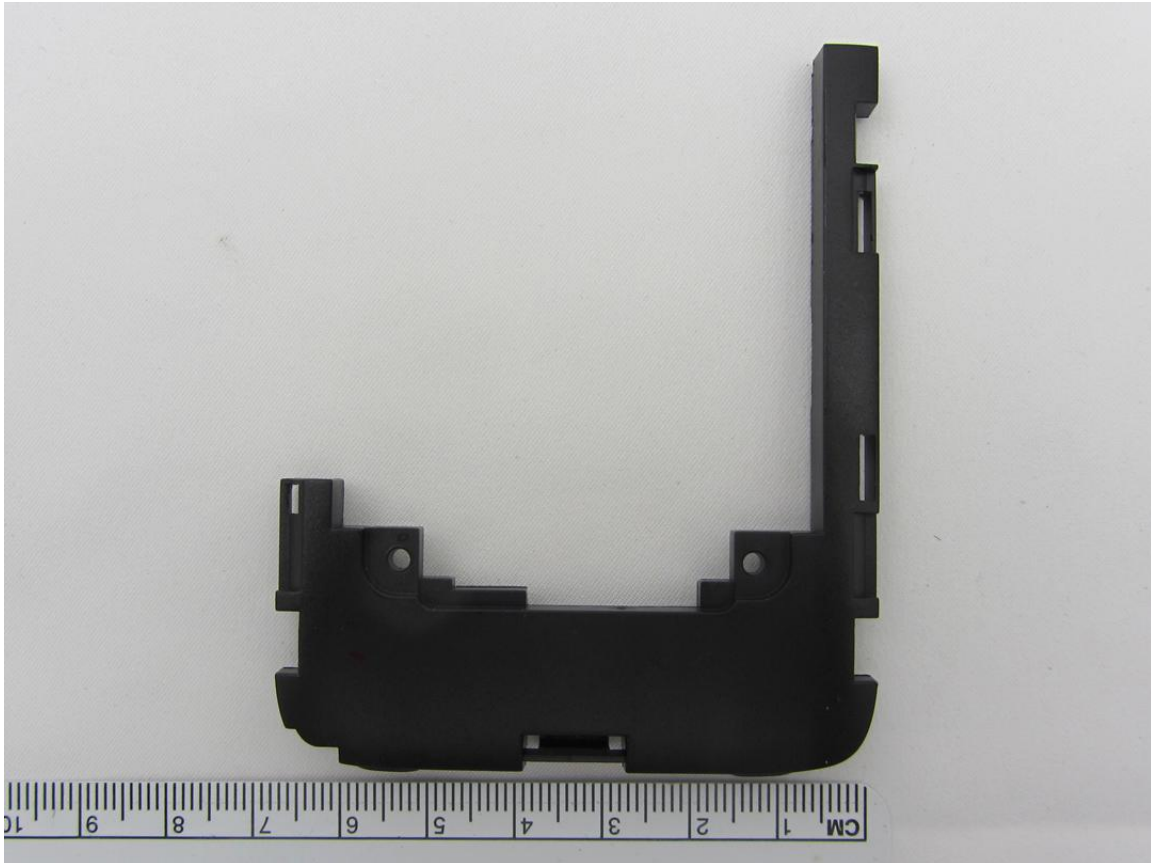
1 Internal Photographs



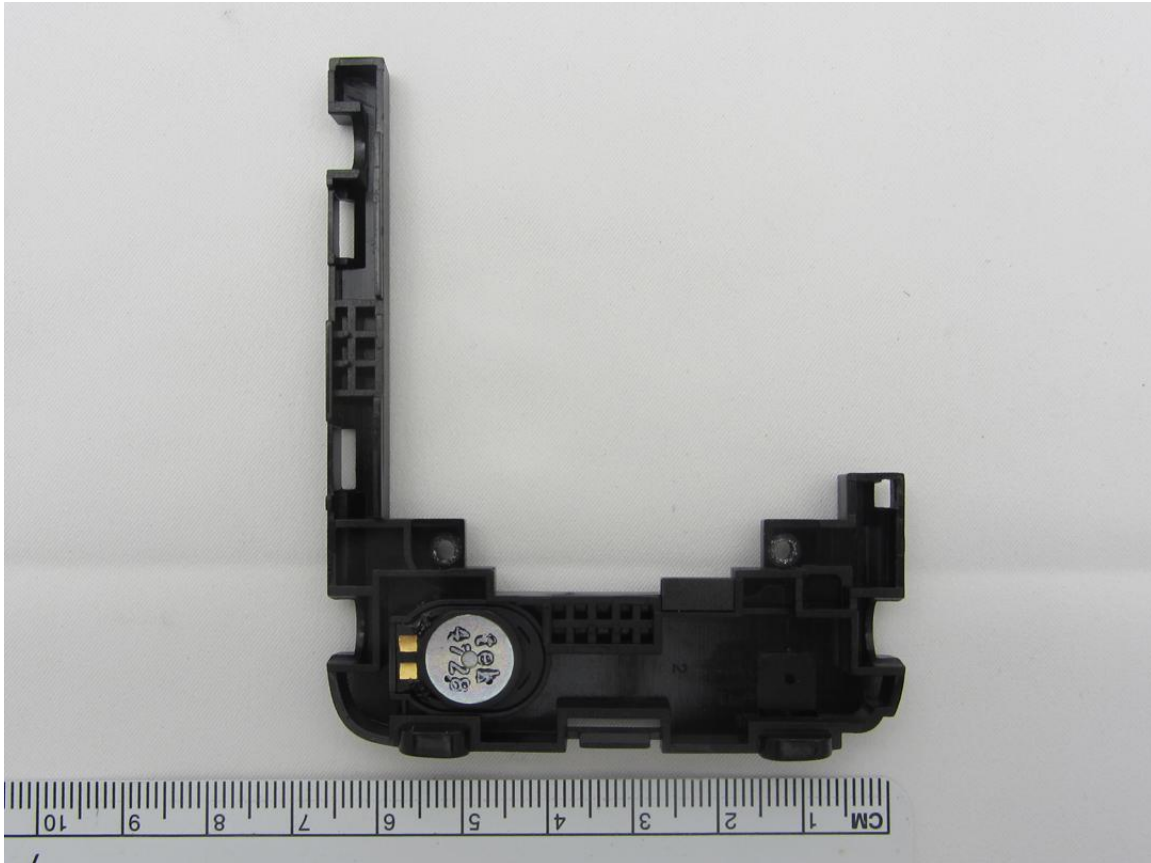
Back Side, Rear Panel Removed



Bottom Antenna Carrier (Length)



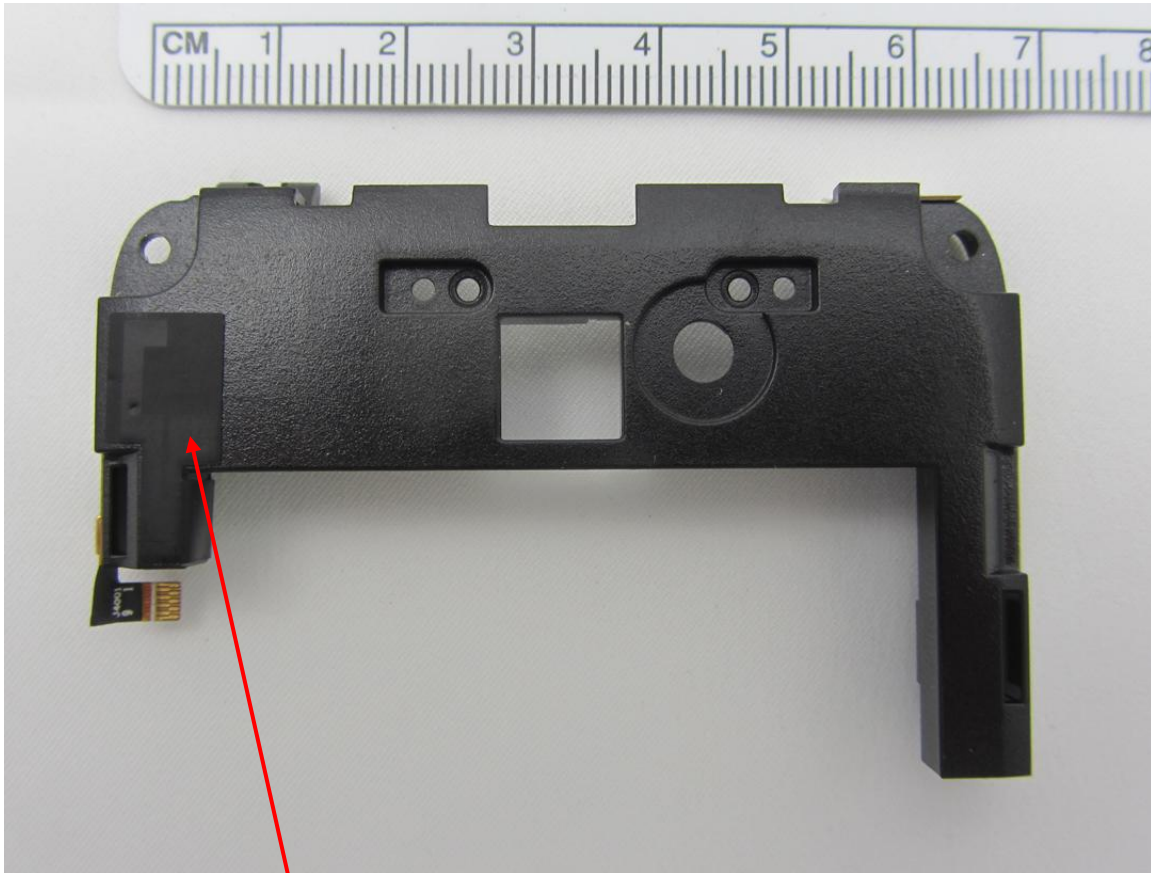
Bottom Antenna Carrier (Width)



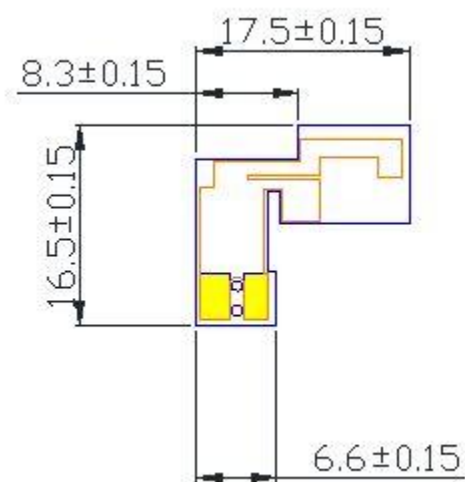
Bottom Antenna Carrier Showing Speaker

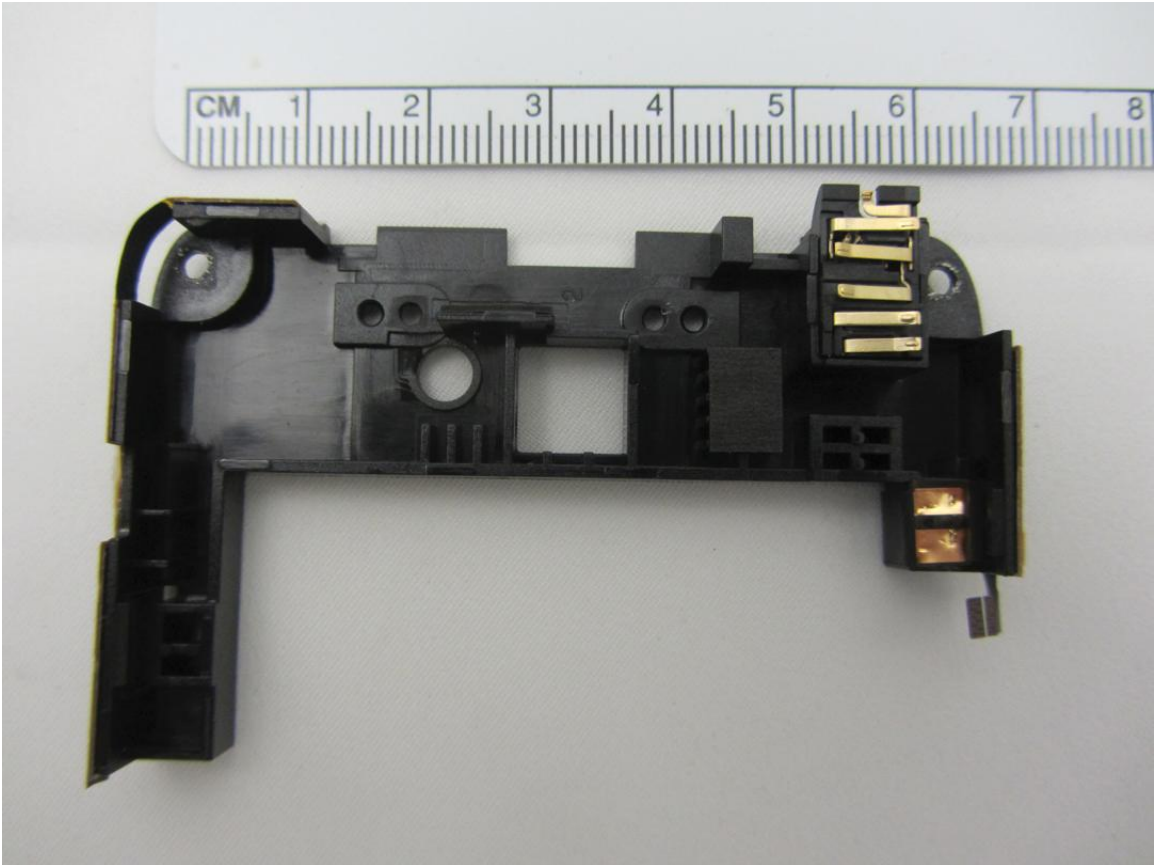


Back Side, Rear Panel Removed (Length)



Top Antenna Carrier w/ Dual Band Wi-Fi Antenna, Flex Circuit for Microphone & Scan Buttons





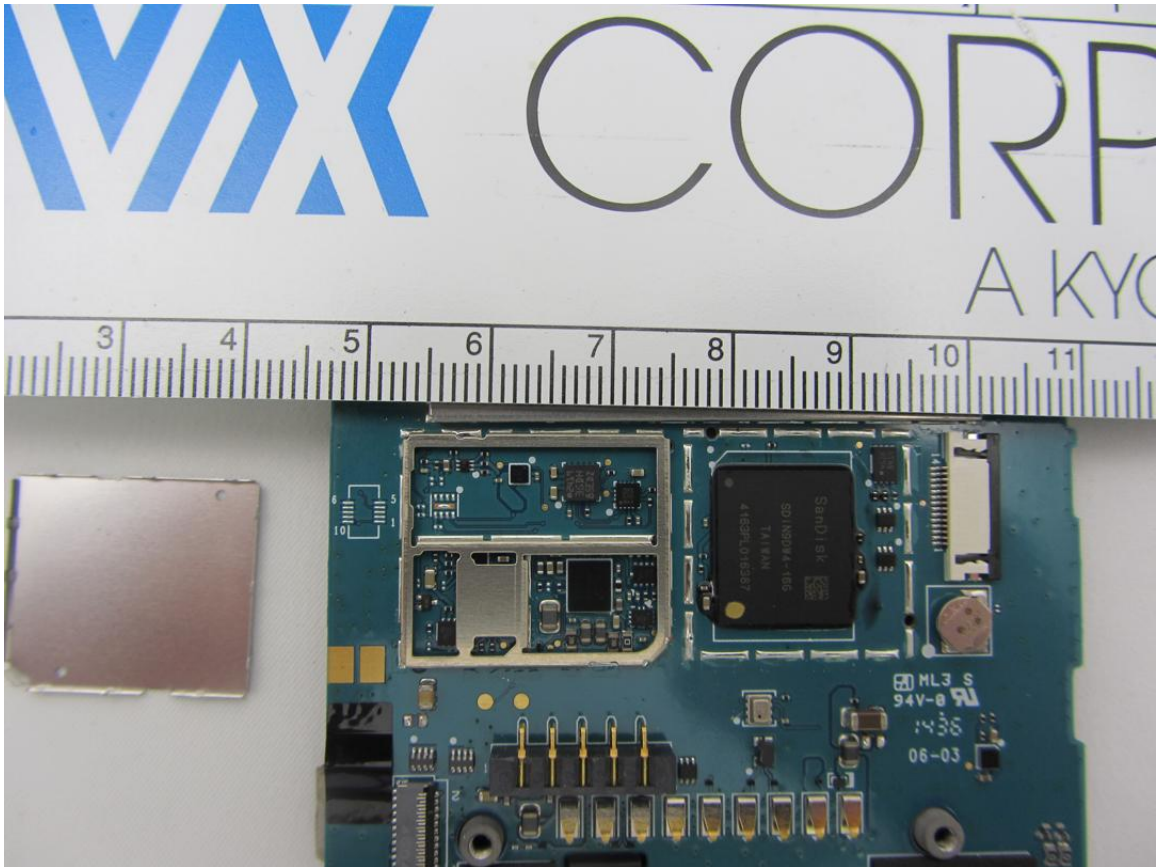
Top Antenna Carrier Rear Side w/ Flex Circuit for Volume & Scan Buttons, Headset Jack Contacts



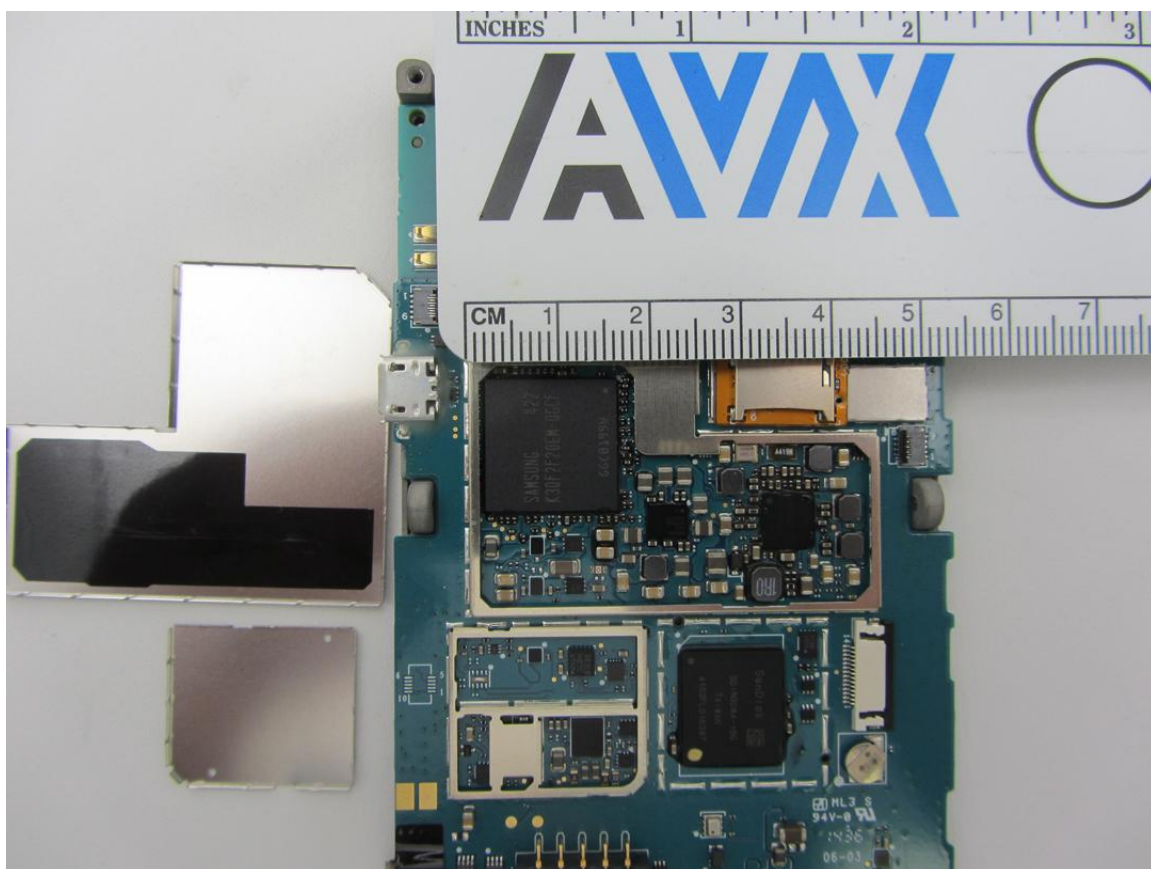
Back Side, Antenna Carriers Removed (Length)



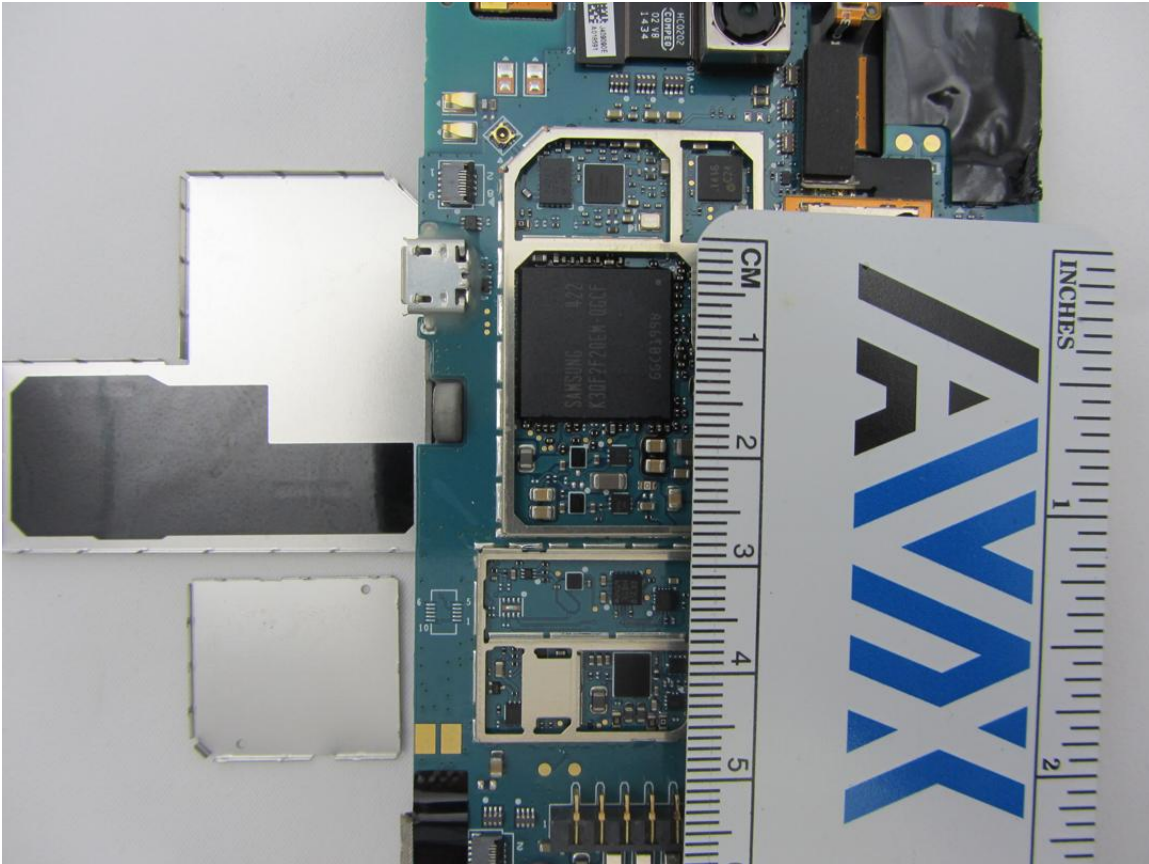
Front and Rear Panels



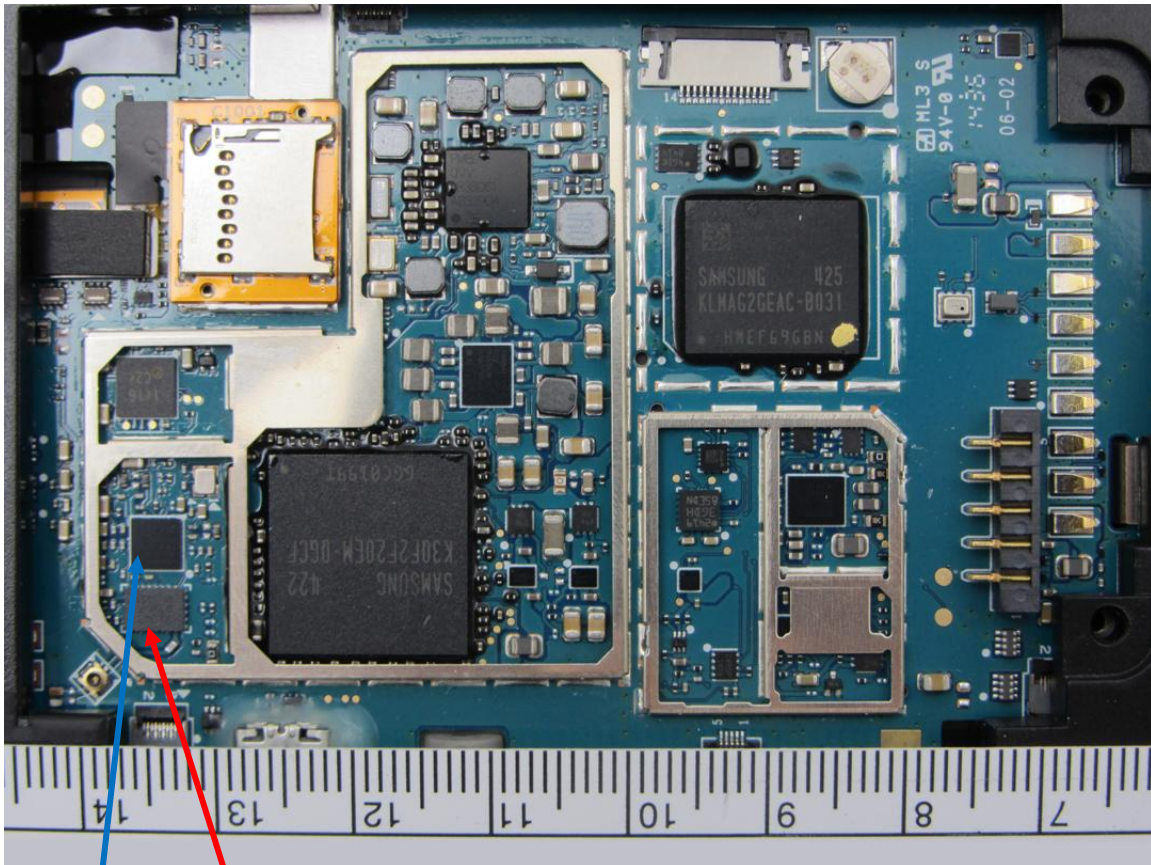
Main Board (bottom), Shield Can Removed



Main Board (top), Shield Cans Removed (width)



Main Board (top), Shield Cans Removed (length)



Main Board w/ NFC, Shield Cans Removed

Epcos R088 LTCC Front-end Module for 802.11 a/ac/b/g/n WLAN and Bluetooth

Qualcomm WCN3680 WLAN/BT Transceiver

Intentionally blank