



Xenon™ Ultra 1962x Series

Cordless Area-Imaging Scanner and Charge Bases

Scanner Models: 1962h, 1962g, 1962li

Quick Start Guide

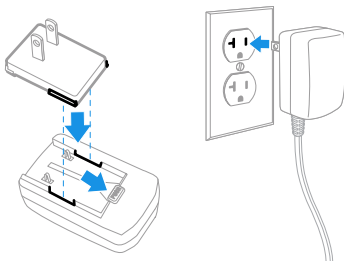
Agency Model: 1962

Note: Refer to your User Guide for information about cleaning your device.

Getting Started

Turn off computer's power before connecting the scanner, then power up the computer once the scanner is fully connected. Once the base is connected and powered up, follow the [Link the Scanner](#) (page 6) instructions to link the scanner to the base.

Power Supply Assembly (if included)



Note: The power supply must be ordered separately, if needed.



Before you attempt to use, charge or replace the battery in the device, carefully read all labels, markings and product documentation provided in the box or online at sps.honeywell.com. To learn more about Battery Maintenance for Portable Devices, go to honeywell.com/PSS-BatteryMaintenance.

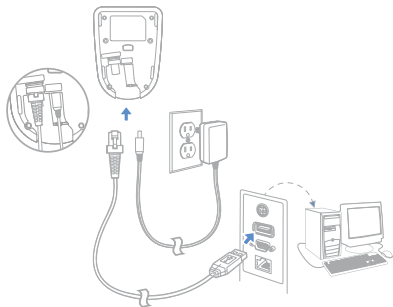
Avant d'essayer d'utiliser, de charger ou de remplacer la batterie de l'appareil, lisez attentivement toutes les étiquettes, marquages et documentation du produit fournis dans la boîte ou en ligne à sps.honeywell.com. Pour en savoir plus sur l'Entretien de Batteries pour Appareils Portables, consultez-le honeywell.com/PSS-BatteryMaintenance.

Connecting the Scanner

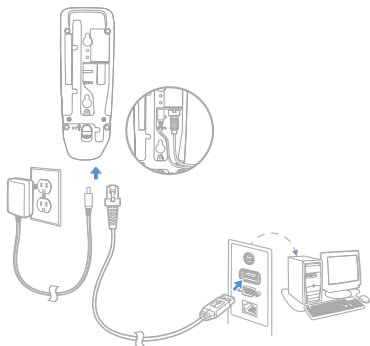
USB:

Note: *If you are charging the scanner using the USB cable, the current available for charging is reduced and charge times are increased. Charging via the power supply is faster.*

Universal Base:

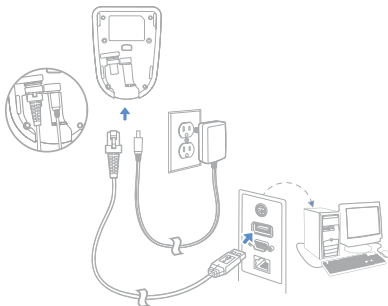


Horizontal Base:

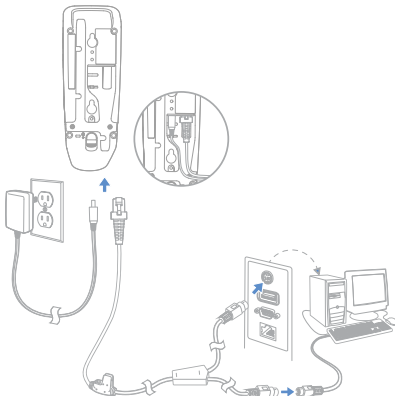


Keyboard Wedge:

Universal Base:

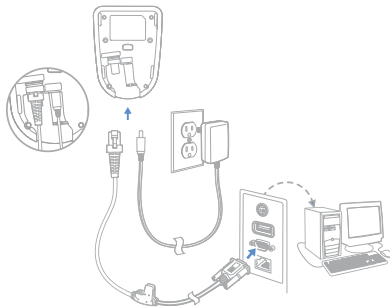


Horizontal Base:

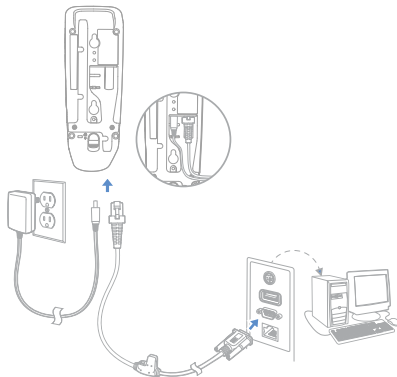


RS232 Serial Port:

Universal Base:



Horizontal Base:



Link the Scanner

Use the following procedure to configure all scanners so they automatically connect to the base.

1. Scan the barcode on the base.
2. Place the scanner into the base.
3. Power cycle the base to complete the link and establish communication between the base and scanner.

When the scanner is in the base, the green LED on the base flashes to indicate the scanner's battery is charging.

Unlink the Scanner

If the base has a scanner linked to it, that scanner must be unlinked before a new scanner can be linked. Once the previous scanner is unlinked, it will no longer communicate with the base. Scan the **Unlink Scanner** barcode to unlink a scanner.



Unlink Scanner

Reading Techniques

The view finder projects an aiming beam that should be centered over the barcode, but it can be positioned in any direction for a good read.



Standard Product Defaults

The following barcode resets all standard product default settings.



Standard Product Defaults

USB Serial

Scan the following code to program the scanner to emulate a regular RS232-based COM Port. If you are using a Microsoft® Windows® PC, you will need to download a driver from the Honeywell website (sps.honeywell.com). The driver will use the next available COM Port number. Apple® Macintosh computers recognize the scanner as a USB CDC class device and automatically use a class driver.



USB Serial

Note: *No extra configuration (e.g., baud rate) is necessary.*

USB PC Keyboard

Scan the following code to program the scanner for a USB PC Keyboard.



USB PC Keyboard

Keyboard Country

Scan the appropriate country code below to program the keyboard layout for your country or language. By default, national character replacements are used for the following characters: # \$ @ [\] ^ _ { } ~. Refer to the ISO 646 Character Replacements chart in your User Guide to view the character replacements for each country.



USA (Default)



Belgium



Denmark



Finland



France

Prelim Draft, not for release



Germany/Austria



Great Britain



Italy



Norway



Spain



Switzerland

Note: For a complete list of country codes, see the *User Guide for your product*.

Trigger

The following barcodes will allow you to use the scanner in **Manual Trigger - Normal Mode** (need to press the trigger to read) or **Presentation mode** (the scanner is activated when it “sees” a barcode).



Manual Trigger - Normal
(Default)



Presentation Mode

Streaming Presentation™

When in Streaming Presentation mode, the scanner leaves the scan illumination on all the time and continuously searches for barcodes.



Streaming Presentation Mode

Suffix

If you want a carriage return after the barcode, scan the **Add CR Suffix** barcode. To add a tab after the barcode, scan the **Add Tab Suffix** barcode. Otherwise, scan the **Remove Suffix** barcode to remove the suffixes.



Add CR Suffix



Add Tab Suffix



Remove Suffix

Add Code ID Prefix to all Symbologies

Scan the following barcode if you wish to add a Code ID prefix to all symbologies at once.



Add Code ID Prefix To All Symbologies
(Temporary)

Note: *For a complete list of Code IDs, see the User Guide for your product.*

Function Code Transmit

When this selection is enabled and function codes are contained within the scanned data, the scanner transmits the function code to the terminal. Charts of these function codes are provided in your User Guide. When the scanner is in keyboard wedge mode, the scan code is converted to a key code before it is transmitted.



Enable
(Default)



Disable

Healthcare

Note: *The following settings are only supported on 1962h models.*

Epic

Scan the following barcode to configure your device to communicate with an Epic software application.



EMR Application

After scanning this code, you must put the scanner into the base or scan the linking barcode on the base or Access Point to relink your scanner.

Meditech®

Scan the following barcode to configure your device to communicate with a Meditech software application.



Meditech Application

After scanning this code, you must put the scanner into the base or scan the linking barcode on the base or Access Point to relink your scanner.

Quiet Operations

The following codes configure the scanner and base to quiet modes for scanning that does not disturb resting patients.

Prelim Draft, not for release

Silent Mode with Flashing LED

Scan the following barcode to completely silence the base and scanner. When a barcode is scanned, the LED and aimer flash 5 times. Green indicates a good scan, red indicates a bad scan.



Silent Mode with Flashing LED

Silent Mode with Long LED

Scan the following barcode to completely silence the base and scanner. When a barcode is scanned, the LED and aimer remain solidly lit for 1 second. Green indicates a good scan, red indicates a bad scan.



Silent Mode with Long LED

Prelim Draft, not for release

Very Low Beeper (Nighttime Mode)

The following barcode silences the base, and sets the scanner for a very low beep when reading barcodes. After scanning this code, the base beep, base and scanner power up beep, and scanner linking sounds are all silenced. When a barcode is scanned, the scanner emits a very soft beep.



Nighttime Mode

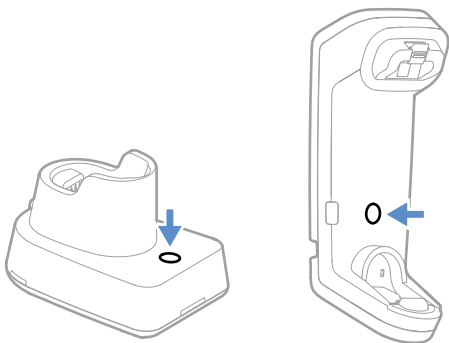
Low Beeper (Daytime Mode)

Scan the following barcode to set all sounds to on, but at a low volume. The scanner beep, base beep, base and scanner power up beep, and scanner linking sounds are all set to low volume.



Daytime Mode

Page Button



The page button on the base is used to page your scanner or to put it into Temporary Streaming Presentation mode. When the scanner is out of the base, press the page button once to make the scanner beep so you can locate it. Press the scanner's trigger to stop the page beeping. When the scanner is in the base, press the page button once and the scanner shines the aimer until a barcode is presented to it. If the scanner doesn't see a barcode in 10 seconds, the aimer shuts off.

Support

To search our knowledge base for a solution or to log into the Technical Support portal and report a problem, go to honeywell.com/PSStechnicalsupport.

Product Documentation

Product documentation is available at sps.honeywell.com.

Limited Warranty

For warranty information, go to sps.honeywell.com and click **Support > Warranties**.

Patents

For patent information, see www.hsmpats.com.

Disclaimer

Honeywell International Inc. (“HII”) reserves the right to make changes in specifications and other information contained in this document without prior notice, and the reader should in all cases consult HII to determine whether any such changes have been made. HII makes no representation or warranties regarding the information provided in this publication.

HII shall not be liable for technical or editorial errors or omissions contained herein; nor for incidental or consequential damages resulting from the furnishing, performance, or use of this material. HII disclaims all responsibility for the selection and use of software and/or hardware to achieve intended results.

This document contains proprietary information that is protected by copyright. All rights are reserved. No part of this document may be photocopied, reproduced, or translated into another language without the prior written consent of HII.

Copyright © 2023 Honeywell Group of Companies. All rights reserved.



Agency Model: 1960, 1962

Table with 8 columns and 3 rows providing product documentation availability in various languages: English, Portuguese, Chinese, Japanese, Korean, Spanish, Hebrew, and Arabic.



FCC Part 15 Subpart B Class B

This device complies with part 15 of the FCC Rules. Operation is subject to the following two conditions:

- 1. This device may not cause harmful interference.
2. This device must accept any interference received, including interference that may cause undesired operation.
This equipment has been tested and found to comply with the limits for a Class B digital device pursuant to part 15 of the FCC Rules.

Table with 4 columns and 1 row for TÜV R Statement and Normes TÜV R, including logos and certification details.

Table with 8 columns and 1 row for safety cautions in multiple languages: English, French, German, Italian, Spanish, Hebrew, Arabic, and Chinese.

Para su uso en México, la operación de este equipo está sujeta a las siguientes dos condiciones:
1. Es posible que este equipo o dispositivo no cause interferencia perjudicial.
2. Este equipo o dispositivo debe aceptar cualquier interferencia, incluyendo la que pueda causar su operación no deseada.

Table with 2 columns and 1 row for Canadian Compliance and Conformité à la réglementation canadienne.

Model: 1962

RF Exposure
The equipment complies with FCC RF exposure limits set forth for an uncontrolled environment. The equipment must not be co-located or operating in conjunction with any other antenna or transmitter.

Table with 2 columns and 1 row for IC RF Radiation Exposure and Déclaration d'exposition aux radiations.

Table with 8 columns and 3 rows for Bluetooth specifications, including frequency, power, and safety warnings in multiple languages.

Model: 1960, 1962

Table with 8 columns and 2 rows for cable shielding requirements in multiple languages.

Table with 8 columns and 1 row for patent information in multiple languages.

Table with 8 columns and 1 row for special information in multiple languages.

Table with 8 columns and 1 row for environmental information in multiple languages.

Table with 8 columns and 1 row for environmental information in multiple languages.

Table with 8 columns and 1 row for environmental information in multiple languages.

Table with 8 columns and 1 row for environmental information in multiple languages.

Table with 8 columns and 1 row for environmental information in multiple languages.

Table with 8 columns and 1 row for environmental information in multiple languages.

型号 (Model): 1960, 1962

产品中有害物质的名称及含量 (Names and Content of Hazardous Substances in the Product)

部件名称 (Parts Name)	有害物质 (Hazardous Substances)					
	铅 (Pb)	汞 (Hg)	镉 (Cd)	六价铬 (Cr6+)	多溴联苯 (PBB)	多溴二苯醚 (PBDE)
成像式条码阅读器 (Imager)	x	o	o	o	o	o
印刷电路板 (PCB)	x	o	o	o	o	o
外壳 (Housing)	o	o	o	o	o	o
连线 (Cables)	o	o	o	o	o	o
电池 (Battery) (型号 (Model): 1962)	o	o	o	o	o	o

本表格依据 SJ/T11364 的规定编制。(The table is created by SJ/T11364 requirement.)

o: 表示该有害物质在该部件所有均质材料中的含量均在 GB/T26572 标准规定的限量要求以下。(Indicates that this hazardous substance contained in all of the homogeneous materials for this part is below the limit requirement in China's GB/T26572.)

x: 表示该有害物质至少在该部件的某一均质材料中的含量超出 GB/T26572 标准规定的限量要求。(Indicates that this hazardous substance contained in at least one of the homogeneous materials for this part is above the limit requirement in China's GB/T26572.)

