




The ~~EN1501 pulse meter~~ transmitter is a pulse counter which can be used for water, ~~gas and electric~~ submetering applications. 

### Product Features

- Compatible with ~~virtually any pulse output device~~
- ~~TapWatch submetering system compatible~~
- Includes case tamper protection

### Product Specifications

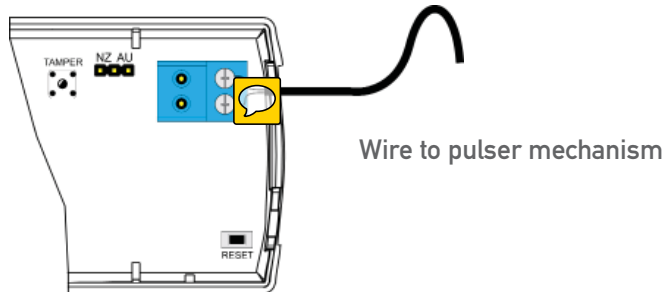
Weight:	<del>1.9 oz</del>
Typical battery life:	5 years
Internal battery type:	Panasonic CR123A
<del>Accessories:</del>	<del>ACC501 transmitter mounting plate</del>
<del>Compatibility requirements:</del>	<del>A dry contact such as a reed switch</del>
	<del>The pulse width of a switch output when activated must be greater than or equal to 10ms</del>
	<del>The fastest pulse rate must be one pulse every four seconds</del>
	<del>Closed impedance of the pulser mechanism must be smaller than 1k ohm</del>
	<del>Open impedance of the pulser mechanism must be greater than 5Mega-ohm</del>
Operating environment:	
Temperature:	32°F to 140°F
Humidity:	Up to 90% (non-condensing)
Market:	North America, <del>Australia, New Zealand</del>
EchoStream® frequency:	902-928 MHz, frequency hopping spread spectrum
Check-in time frequency:	60 minutes
Regulatory compliance:	FCC, RoHS

### Mounting plate

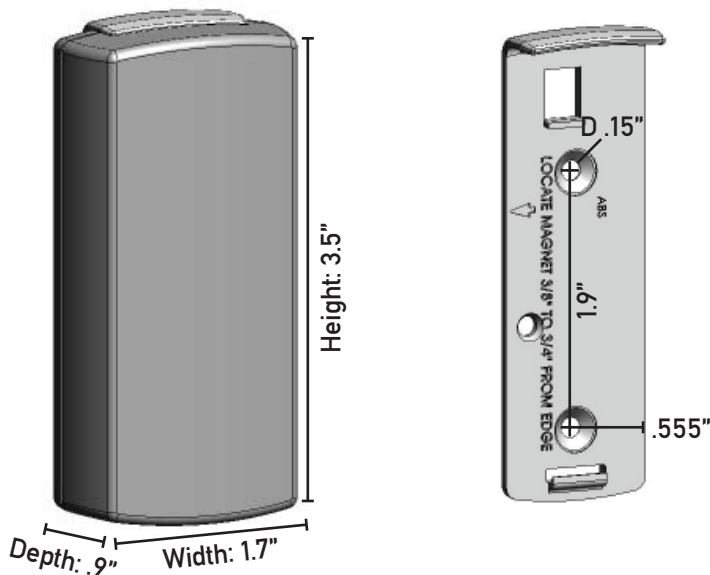


The optional transmitter mounting plate hinges to the transmitter. Just mount the plate and snap the transmitter in place.

## Inputs



## Dimensions



## Reference Materials (available at [www.inovonics.com](http://www.inovonics.com))

[EN1501/EN1501-XL EchoStream® TapWatch® Transmitter](#) Installation and Operation Manual

Inovonics Product Catalog: North America

- The range and performance of any wireless product depends on the structure and environment in which it operates.
- Continual enhancements to our products may cause specifications to change without notice.
- Patents: 7,154,866; 7,554,932; 7,746,804; others pending.

## Technical documents

For technical documents visit us at <http://www.inovonics.com/support/tech-documents/> or use the QR code below.

