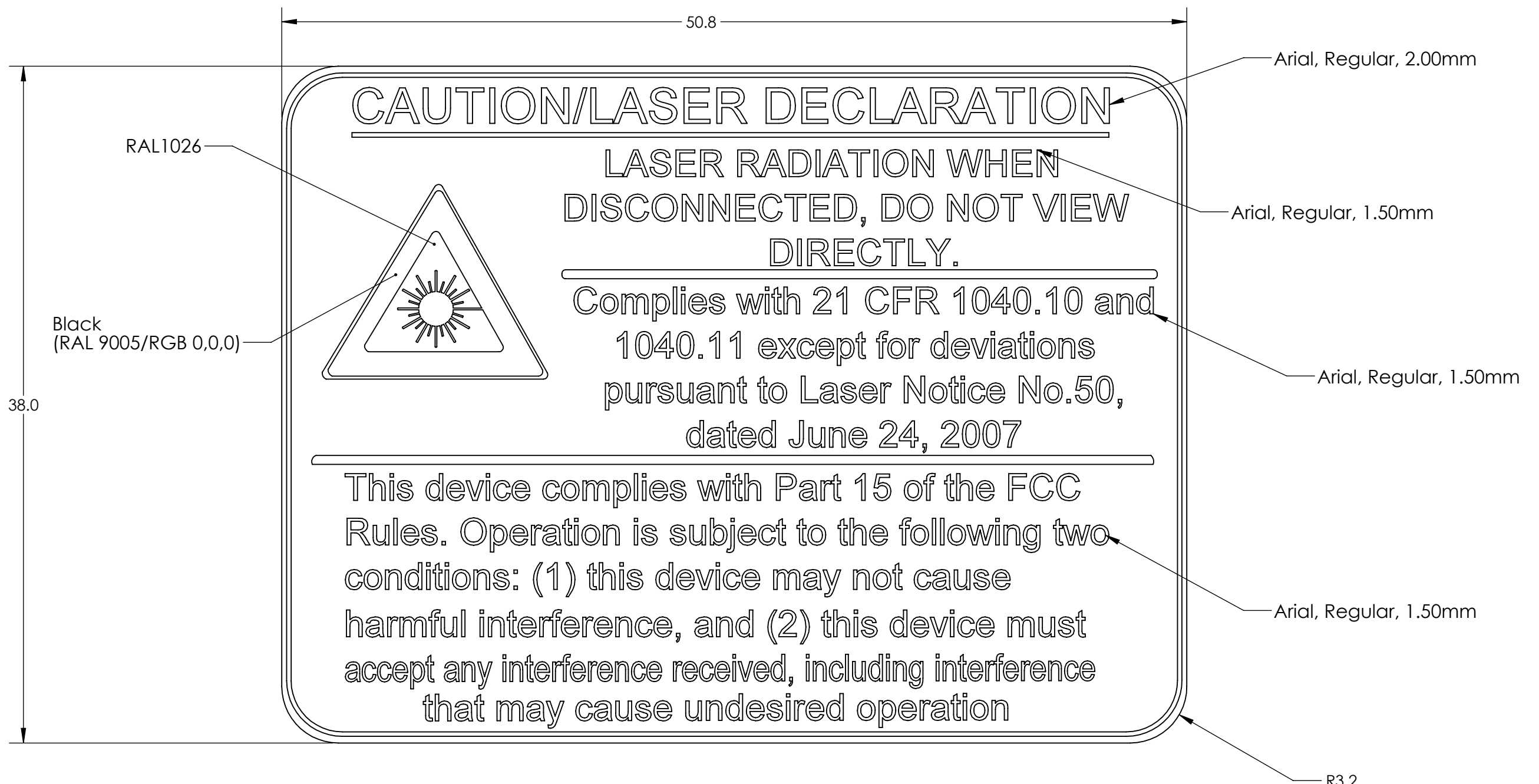


REVISIONS			
REV.	DESCRIPTION	APPV	DATE

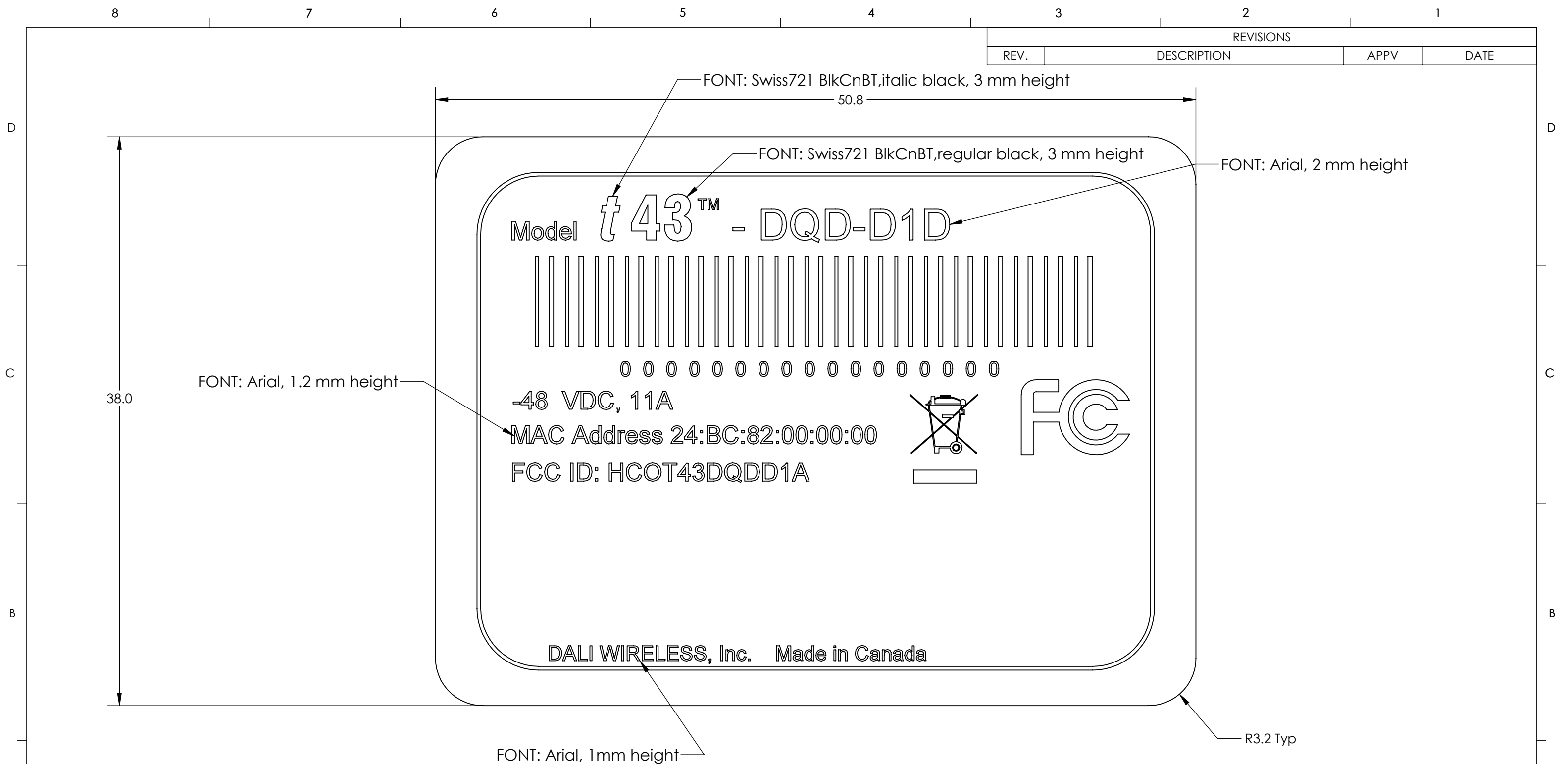


Material:
3M Label Material 7980, White Polyester
Black text font (RAL 9005/RGB 0,0,0)

THE INFORMATION CONTAINED HEREIN IS PROPRIETARY TO DALI WIRELESS, INC AND IS TO BE USED SOLELY FOR THE PURPOSE FOR WHICH IT IS SUPPLIED. IT SHALL NOT BE DISCLOSED IN WHOLE OR IN PART TO ANY OTHER PARTY WITHOUT DALI PERMISSION.	UNLESS OTHERWISE SPECIFIED: DIMENSIONS ARE IN MILLIMETERS - TOLERANCES: X. = ± 0.50 X.X = ± 0.25 X.XX = ± 0.10 < = ± 0.5	MATL: See Note FINISH: -	DRAWN BY Kelvin Tam DATE 2012-12-06	Dali Wireless, Inc.	
			CHECKED DATE		TITLE UL Laser Label
			MFG DATE		SIZE B DWG No. 440-00019 REV Rev A1
			SUPPLY CHAIN DATE		SCALE: 4:1 SHEET: 1 OF 1
SURFACE FINISH = 1.6 µm DEBURR & BREAK SHARP CORNERS		DIMENSIONS & TOLERANCING ARE TO BE INTERPRETED PER ASME Y14.5M-2009 AND APPLY TO FINISHED PART	PROJECTION	DO NOT SCALE DRAWING	

REVISIONS

REV.	DESCRIPTION	APPV	DATE
------	-------------	------	------



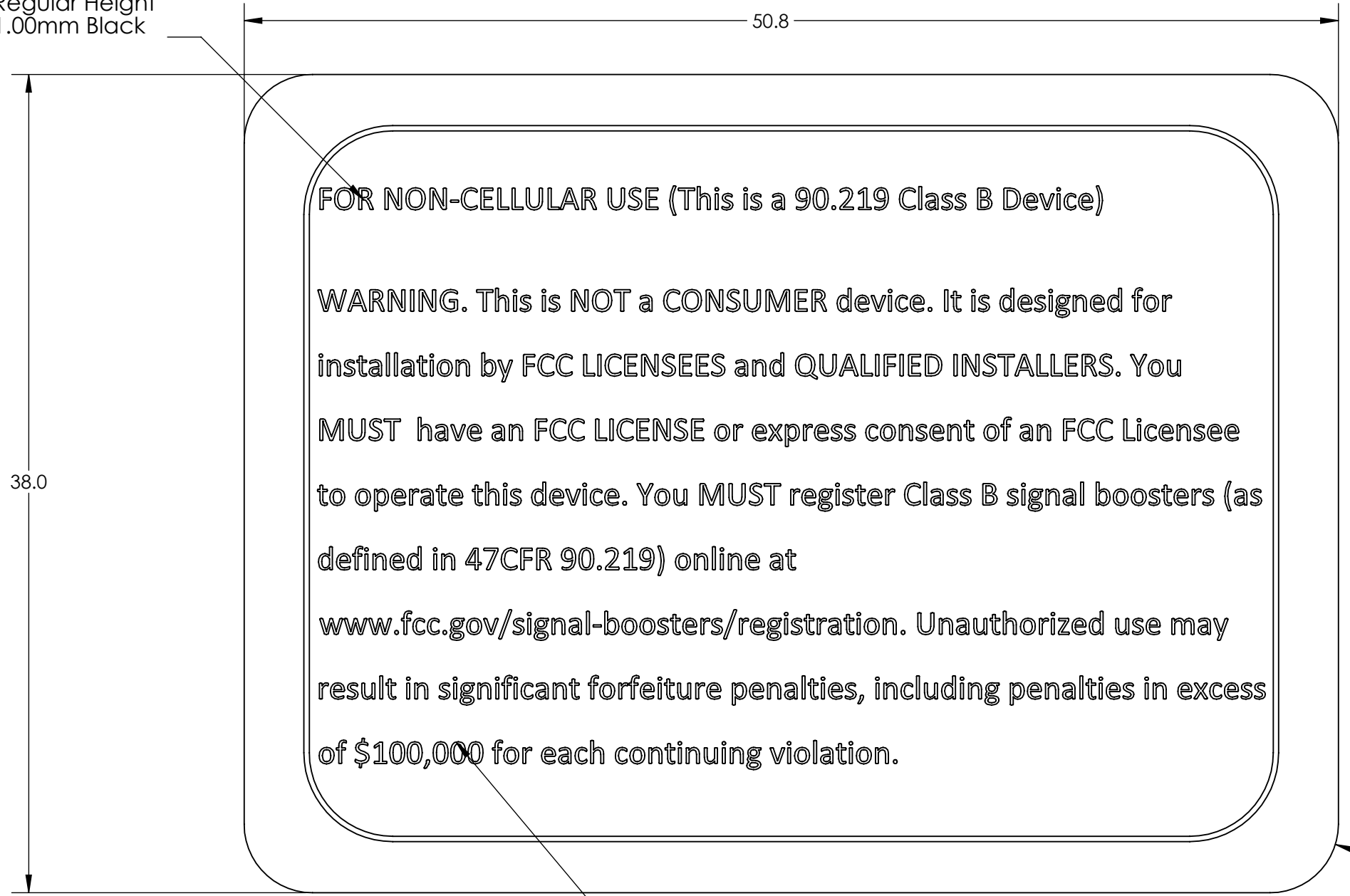
Note:
For more information regarding text placement,
a .dwg file is available upon request.

Material:
Fasson® 2 Mil Matte Chrome Polyester TC/S730 Film(0.05mm thick) with S730 adhesive.
Black text font.
See referenced documents for printer/ink used during process

THE INFORMATION CONTAINED HEREIN IS PROPRIETARY TO DALI WIRELESS, INC AND IS TO BE USED SOLELY FOR THE PURPOSE FOR WHICH IT IS SUPPLIED. IT SHALL NOT BE DISCLOSED IN WHOLE OR IN PART TO ANY OTHER PARTY WITHOUT DALI PERMISSION.	UNLESS OTHERWISE SPECIFIED: DIMENSIONS ARE IN MILLIMETERS - TOLERANCES: X. = ± 0.50 X.X = ± 0.25 X.XX = ± 0.10 ∠ = ± 0.5	MATL: - FINISH: -	DRAWN BY: Marian Stanciu CHECKED: _____ MFG: _____ SUPPLY CHAIN: _____ Q.A.: _____	DATE: - DATE: _____ DATE: _____ DATE: _____	Dali Wireless, Inc.
	SURFACE FINISH = 1.6 µm DEBURR & BREAK SHARP CORNERS	DIMENSIONS & TOLERANCING ARE TO BE INTERPRETED PER ASME Y14.5M-2009 AND APPLY TO FINISHED PART	PROJECTION	TITLE: t43 PS_ t43-DQD-D1D SIZE: B DWG No.: 440-00037 SCALE: 2:1	
			DO NOT SCALE DRAWING	REV: Eng 01 SHEET: 1 OF 1	

REVISIONS			
REV.	DESCRIPTION	APPV	DATE

Font Calibri,
Regular Height
1.00mm Black



FOR NON-CELLULAR USE (This is a 90.219 Class B Device)

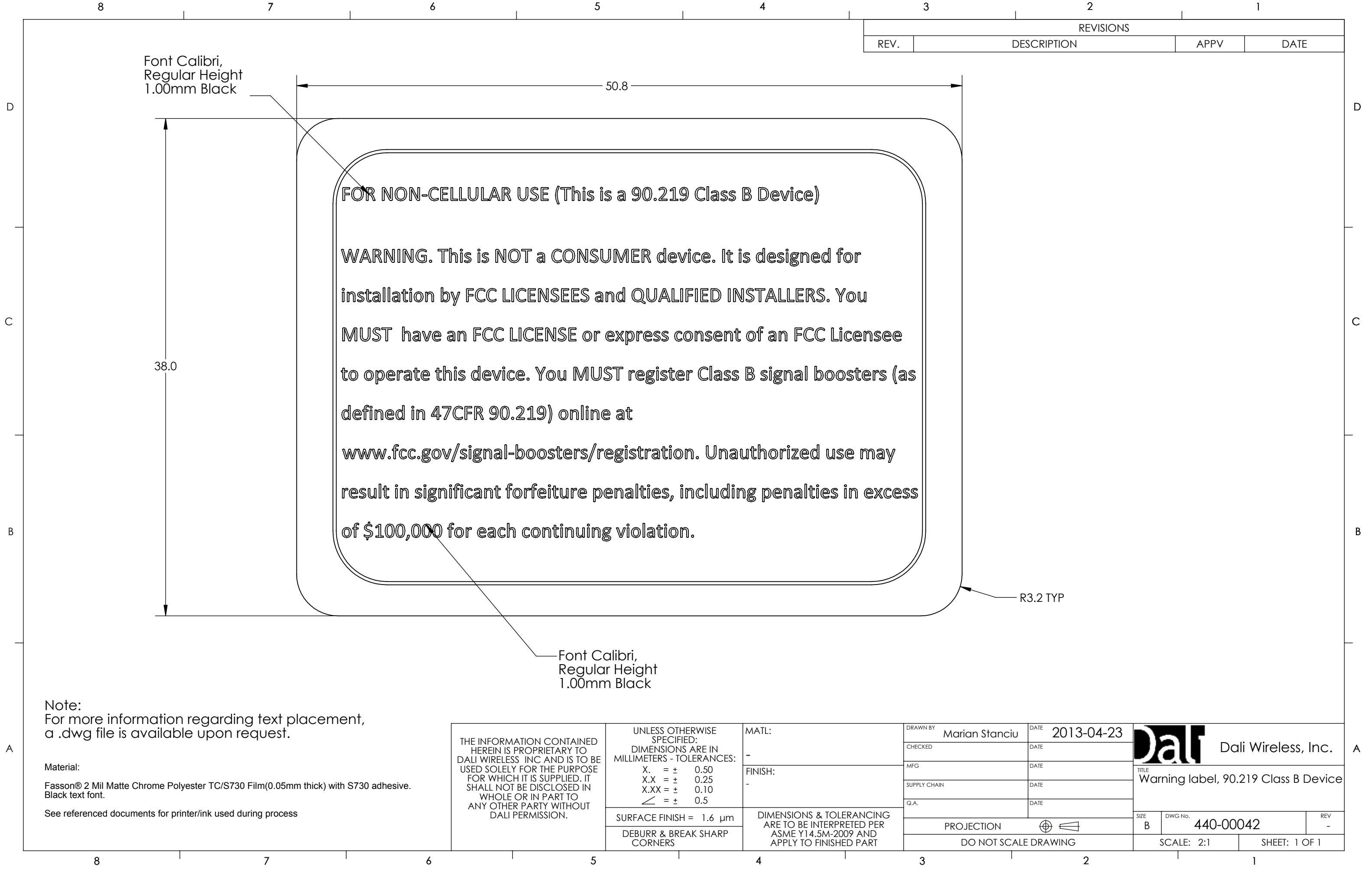
WARNING. This is NOT a CONSUMER device. It is designed for installation by FCC LICENSEES and QUALIFIED INSTALLERS. You MUST have an FCC LICENSE or express consent of an FCC Licensee to operate this device. You MUST register Class B signal boosters (as defined in 47CFR 90.219) online at www.fcc.gov/signal-boosters/registration. Unauthorized use may result in significant forfeiture penalties, including penalties in excess of \$100,000 for each continuing violation.

Font Calibri,
Regular Height
1.00mm Black

Note:
For more information regarding text placement,
a .dwg file is available upon request.

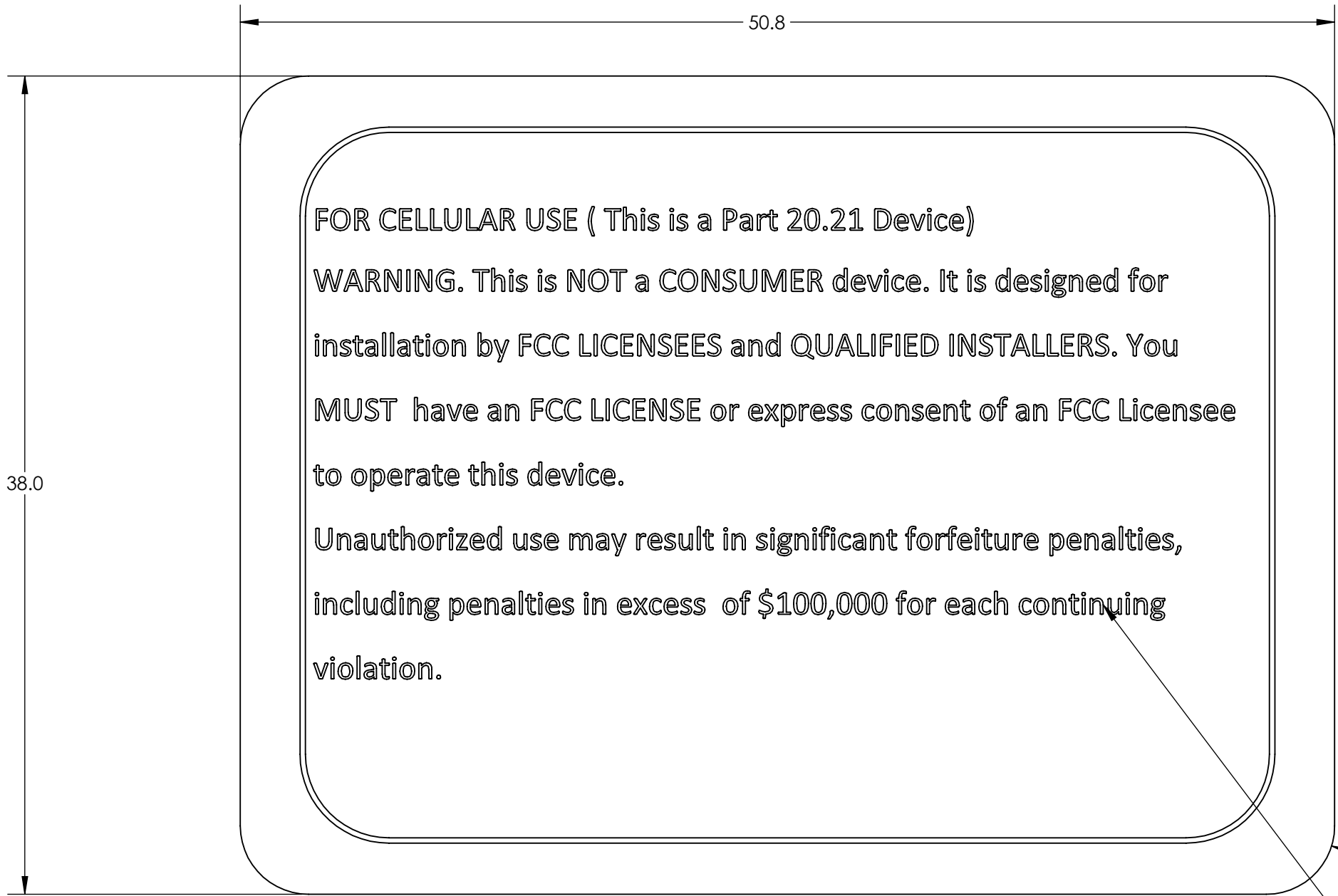
Material:
Fasson® 2 Mil Matte Chrome Polyester TC/S730 Film(0.05mm thick) with S730 adhesive.
Black text font.
See referenced documents for printer/ink used during process

THE INFORMATION CONTAINED HEREIN IS PROPRIETARY TO DALI WIRELESS, INC AND IS TO BE USED SOLELY FOR THE PURPOSE FOR WHICH IT IS SUPPLIED. IT SHALL NOT BE DISCLOSED IN WHOLE OR IN PART TO ANY OTHER PARTY WITHOUT DALI PERMISSION.	UNLESS OTHERWISE SPECIFIED: DIMENSIONS ARE IN MILLIMETERS - TOLERANCES: X. = ± 0.50 X.X = ± 0.25 X.XX = ± 0.10 ∠ = ± 0.5	MATL: - FINISH: -	DRAWN BY: Marian Stanciu CHECKED: _____ MFG: _____ SUPPLY CHAIN: _____ Q.A.: _____	DATE: 2013-04-23 DATE: _____ DATE: _____ DATE: _____	Dali Wireless, Inc. TITLE: Warning label, 90.219 Class B Device SIZE: B DWG No. 440-00042 SCALE: 2:1 SHEET: 1 OF 1
	SURFACE FINISH = 1.6 µm DEBURR & BREAK SHARP CORNERS	DIMENSIONS & TOLERANCING ARE TO BE INTERPRETED PER ASME Y14.5M-2009 AND APPLY TO FINISHED PART	PROJECTION	DO NOT SCALE DRAWING	



8 7 6 5 4 3 2 1

REVISIONS			
REV.	DESCRIPTION	APPV	DATE



FOR CELLULAR USE (This is a Part 20.21 Device)

WARNING. This is NOT a CONSUMER device. It is designed for installation by FCC LICENSEES and QUALIFIED INSTALLERS. You MUST have an FCC LICENSE or express consent of an FCC Licensee to operate this device.

Unauthorized use may result in significant forfeiture penalties, including penalties in excess of \$100,000 for each continuing violation.

Font Calibri, Regular Height 1.00mm Black

Note:
For more information regarding text placement, a .dwg file is available upon request.

Material:
Fasson® 2 Mil Matte Chrome Polyester TC/S730 Film(0.05mm thick) with S730 adhesive.
Black text font.
See referenced documents for printer/ink used during process

THE INFORMATION CONTAINED HEREIN IS PROPRIETARY TO DALI WIRELESS, INC AND IS TO BE USED SOLELY FOR THE PURPOSE FOR WHICH IT IS SUPPLIED. IT SHALL NOT BE DISCLOSED IN WHOLE OR IN PART TO ANY OTHER PARTY WITHOUT DALI PERMISSION.	UNLESS OTHERWISE SPECIFIED: DIMENSIONS ARE IN MILLIMETERS - TOLERANCES: X. = ± 0.50 X.X = ± 0.25 X.XX = ± 0.10 ∠ = ± 0.5	MATL: - FINISH: -	DRAWN BY: Marian Stanciu CHECKED: MFG: SUPPLY CHAIN: Q.A.:	DATE: 2013-04-23 DATE: DATE: DATE:	Dali Wireless, Inc.	
	SURFACE FINISH = 1.6 µm DEBURR & BREAK SHARP CORNERS	DIMENSIONS & TOLERANCING ARE TO BE INTERPRETED PER ASME Y14.5M-2009 AND APPLY TO FINISHED PART	PROJECTION	TITLE: Warning label, for cellular use_part 20.21		
			DO NOT SCALE DRAWING	SIZE: B DWG No.: 440-00044 SCALE: 2:1		REV: - SHEET: 1 OF 1

8 7 6 5 4 3 2 1