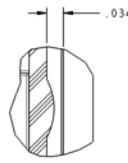
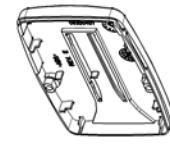


- NOTES:
- SEE CAD MODEL 09300407 FOR FEATURE DIMENSIONS NOT CONTROLLED ON THIS DRAWING. TOLERANCES OF GEOMETRY ARE PER SPI "STANDARDS AND PRACTICES OF PLASTIC MOLDERS" ENGINEERING AND TECHNICAL STANDARDS FOR (MATERIAL SPECIFIED) USING COMMERCIAL VALUE. TOLERANCES DISPLAYED ON THIS DRAWING SUPERSEDE THOSE IN SPI TABLE.
 - TOLERANCES UNDER .005 INCH ONLY APPLICABLE WHERE SPECIFIED ON THIS DRAWING.
 - MATERIAL: CH1 ME1 POLYLAC® PA777E ABS RESIN (ISO SYMBOL>ABS<).
 - COLOR: J92710B7
 - SEE CHAMBERLAIN STANDARD PRODUCT SPEC. 190A0280 FOR GENERAL TOOLING AND PROCESSING. SECTION 1.2 & 1.3 DO NOT APPLY. REFER TO DATA BASE.
 - PART NO., ISSUE LETTER, VENDOR I.D., ISO MATERIAL DESIGNATION, & CAVITY NUMBER (IN MULTY-CAVITY TOOL) TO BE MOLDED IN THE AREA INDICATED IN 1/32 TO 1/8 INCH HIGH CHARACTERS, RAISED TO .010 INCH ABOVE THE SURFACE. ADJUSTABLE DATE CODE MOLDED IN USING TWO WHEELS ONE FOR MONTH AND THE OTHER FOR YEAR. THE LETTER MUST BE LEGIBLE.
 - TEXTURE: MT11020 ON ALL EXTERNAL SURFACES.
 - SURFACES WITH NO SPECIFIED FINISH TO BE IN THE RANGE OF SPI B1-C3 (TYPICAL UNLESS DIAMOND POLISH IS NEEDED)
 - ** DIMENSIONS ARE PROCESS CRITICAL AND NEED TO BE CONTROLLED AND MONITORED IN THE MANUFACTURING PROCESS. THESE DIMENSIONS WILL BE SELECTIVELY AUDITED AT C.6.11
 - PARTS MUST COMPLY WITH HAZARDOUS MATERIALS REGULATIONS.
 - AND COMPLIANCE MUST BE INDICATED ON EACH SHIPMENT. PER 190A0790.
 - ALL CORNER RADII AND DRAFTS SHOULD BE DETERMINED BY THE 09300407.PRT UNLESS OTHERWISE SPECIFIED.

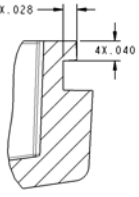
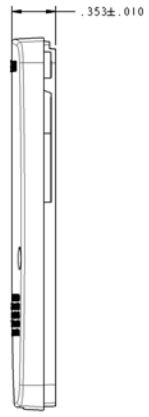
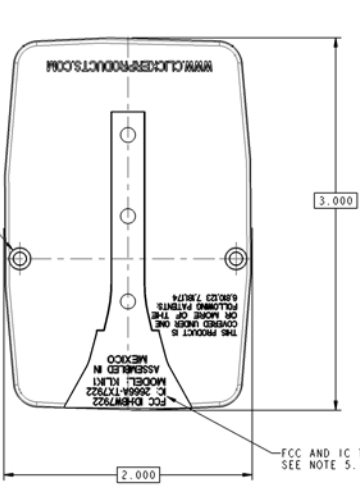
PART NUMBER: 09300407		SHT 1 OF 1 E	
DATE	BY	REVISIONS	
07-0227	SK	RELEASE	A
07-0289	MR	MOLE AT LOC F1 WAS Ø.190	B
07-0441	MR	MOLE AT LOC F1 WAS Ø.190; ADDED ENGRAVED TEXT.	C
07-0441	MR	ADDED .476 + DRAFT 2 PL. ♦ HT	D
12-2005	MR	LOC. H-3 UPDATED FCC AND IC NUMBER	E
21-MAY-12	MR	PER REGULATORY	



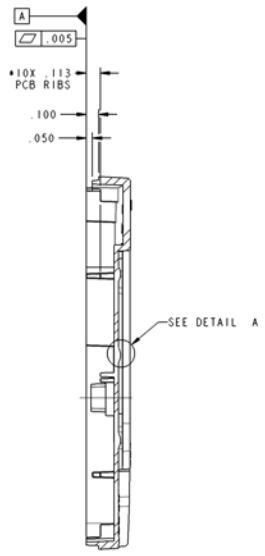
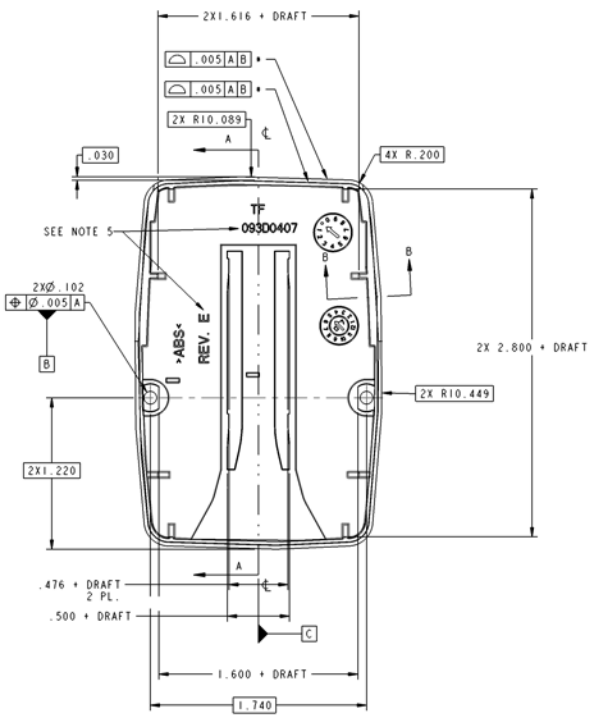
DETAIL A
SCALE 8.000



SCALE 1.000



SECTION B-B
SCALE 8.000



SECTION A-A

CONFIDENTIAL THIS DRAWING AND ANY INFORMATION CONTAINED HEREIN ARE UNCLASSIFIED AND UNCONTROLLED UNLESS INDICATED OTHERWISE. THIS IS A COMPUTER GENERATED DRAWING. DO NOT CHANGE THIS DOCUMENT WITHOUT UPDATING THE COMPUTER DATABASE.		STATISTICAL PROCESS CONTROL LEVELS: NO. OF DEFECTS: 3 APPR. TIME: 3 CRITICAL: 1 Cpk 1.33 CRITICAL: 1 Cpk 1.67		THIRD ANGLE PROJECTION CHAMBERLAIN	
TOLERANCES EXCEPT AS NOTED: Ø & Ø.010 - .005 DECIMAL Ø & Ø.010 - .005 DECIMAL Ø & Ø.010 - .005 DECIMAL Ø & Ø.010 - .005 DECIMAL Ø & Ø.010 - .005 DECIMAL		SEE NOTES DO NOT SCALE DRAWING FINISH NONE		DATE: 21 May 12 07:49:47 AM SCALE: 2.00 PART NUMBER: 09300407 SHEET: 1 OF 1 E	

THIS PRODUCT IS
COVERED UNDER ONE
OR MORE OF THE
FOLLOWING PATENTS:
6,940,123 7,181,174

ASSEMBLED IN
MEXICO

FCCID:HBW7922
IC:2666A-TX7922
Model: KLIK1 40-60090-1

WWW.CLICKERPRODUCTS.COM