

Passport™ remote controls are compatible with a range of LiftMaster® Security+ 2.0™ products including garage door openers, commercial door openers, gate operators, telephone entry and access control systems.

Passport™ LT remote controls (Models: PPLV1, PPLK1, and PPLK1PH) are not compatible with garage door openers.

NOTE: The images are for reference and your product may look different.

Single Button Remote Control
Models: PPV1 & PPLV1



3-Button Remote Control
Model: PPV3



Key chain Remote Control
Models: PPK1, PPK3, PPK1PH, PPK3PH, PPLK1 & PPLK1PH



Program the remote using the LEARN button or the LCD screen depending on the device. When using the Passport™ remote control an access control system or gated entry, contact your property manager or LiftMaster® dealer.

⚠ WARNING

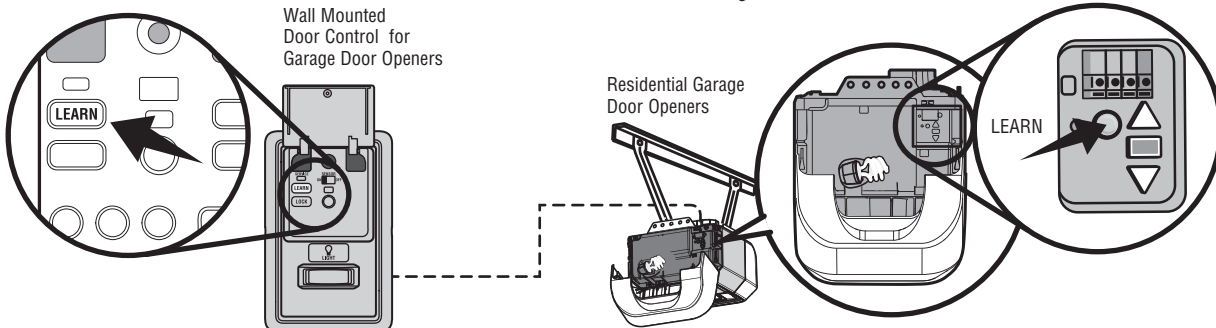
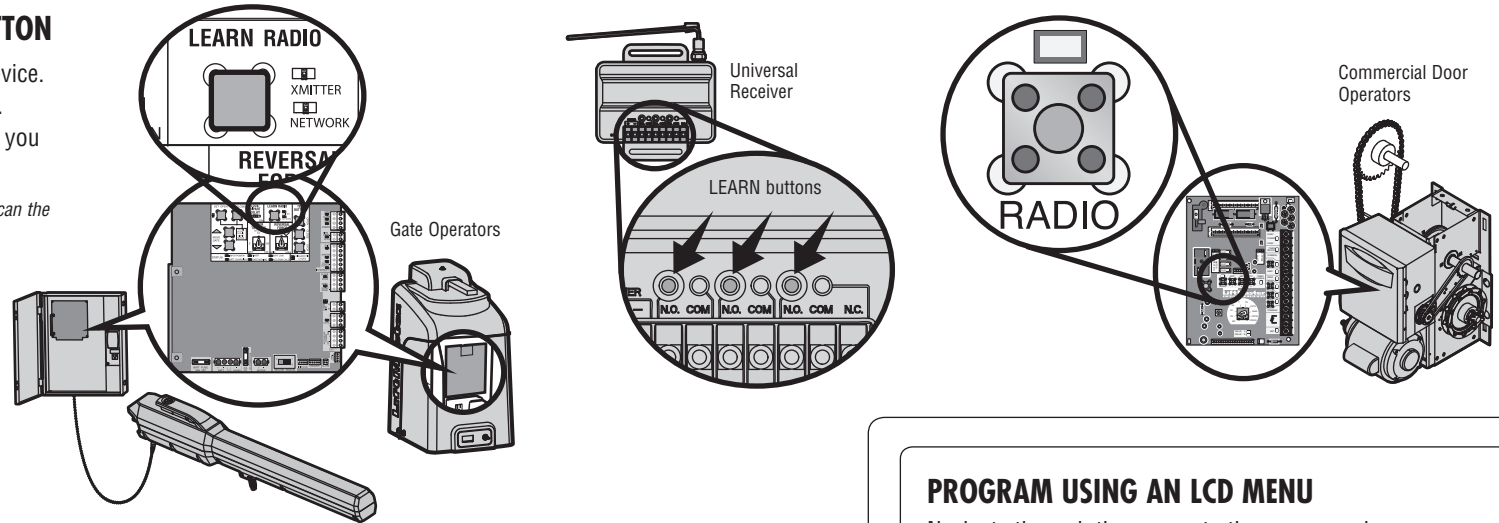
To prevent possible SERIOUS INJURY or DEATH from a moving gate or garage door:

- ALWAYS keep remote controls out of reach of children. NEVER permit children to operate, or play with remote controls.
- Activate gate or door ONLY when it can be seen clearly, is properly adjusted, and there are no obstructions to door travel.
- ALWAYS keep gate or garage door in sight until completely closed. NEVER permit anyone to cross path of moving gate or door.

PROGRAM USING A LEARN BUTTON

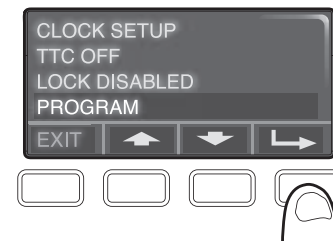
- Locate the LEARN button on your device.
- Press and release the LEARN button.
- Press the remote control button that you would like to program.

For additional help in locating the LEARN button scan the QR code or visit www.?????.com



PROGRAM USING AN LCD MENU

Navigate through the menus to the programming function and follow the instructions. Refer to your product manual for detailed programming instructions.

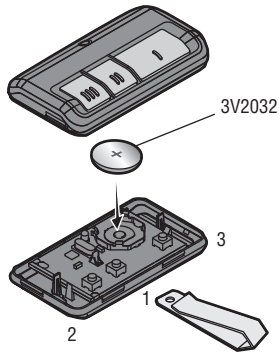


THE REMOTE CONTROL BATTERY

To replace battery, open the case as shown. Insert battery positive side up (+). Replace the battery with only 3V2032 coin cell battery. Dispose of old battery properly.

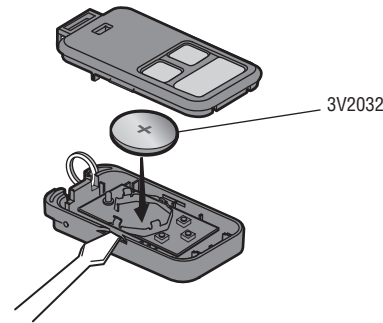
VISOR REMOTE

Pry open the case first in the middle (1), then at each side (2 and 3) with the visor clip.



KEY CHAIN REMOTE

Pry open the case with a screwdriver blade.



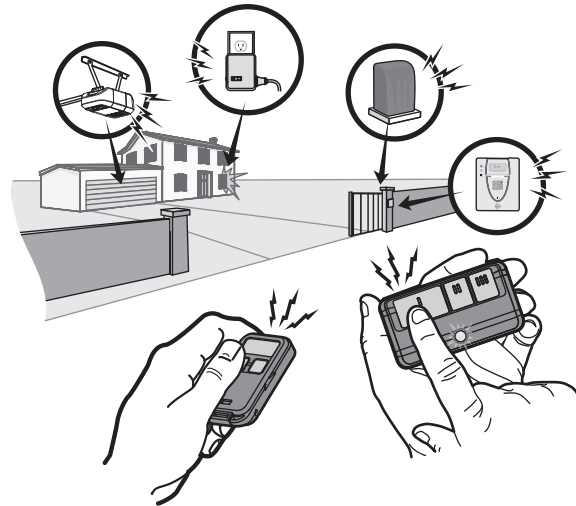
HOW TO USE THE REMOTE CONTROL

Press and hold the button down until the door or gate starts to move. The remote control will operate from up to 3 car lengths away on typical installations. Installations and conditions vary, contact an installing dealer for more information.

3-BUTTON REMOTE CONTROLS

Additional buttons on the remote control can be programmed to operate up to 3 devices such as additional garage door openers, light controls, gate operators or access control systems.

NOTE: Passport™ LT models are designed to work with Passport™ stand alone receivers and commercial operators only and will not work with residential garage door opener accessories.



REPLACEMENT PARTS

3V2032 Lithium battery10A20
Visor Clip29B137

ONE YEAR LIMITED WARRANTY

The Chamberlain Group, Inc. warrants to the first consumer purchaser of this product that it is free from defect in materials and/or workmanship for a period of 1 year from the date of purchase.

⚠ WARNING

To prevent possible SERIOUS INJURY or DEATH:

- NEVER allow small children near batteries.
- If battery is swallowed, immediately notify doctor.

To reduce risk of fire, explosion or chemical burn:

- Replace ONLY with 3V2032 coin batteries.
- DO NOT recharge, disassemble, heat above 212° F (100° C) or incinerate.

NOTICE: To comply with FCC and or Industry Canada rules (IC), adjustment or modifications of this receiver and/or transmitter are prohibited, except for changing the code setting or replacing the battery. THERE ARE NO OTHER USER SERVICEABLE PARTS.

Tested to Comply with FCC Standards FOR HOME OR OFFICE USE. Operation is subject to the following two conditions: (1) this device may not cause harmful interference, and (2) this device must accept any interference received, including interference that may cause undesired operation.