

014CG1097D
014CG1097D

AC_HOT

UE-3-0
10 10

SAW1

UE1

04

LED1

C

F1

C1

C8

MOV1

MOV2

D1

D5

AC

NEUTRAL

D3

D4

VR1

D2

U1

LM2902N
6494409
ST
V_B 64

C6

C3

SAW2

100µF
50V

C5

C9

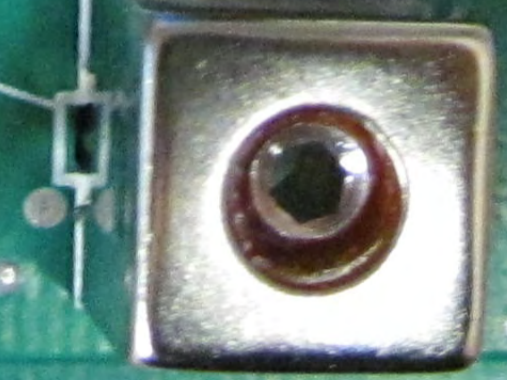
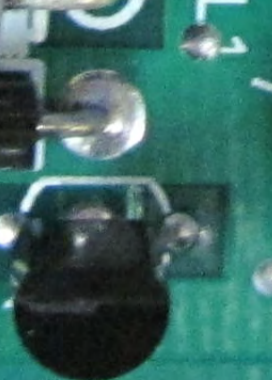
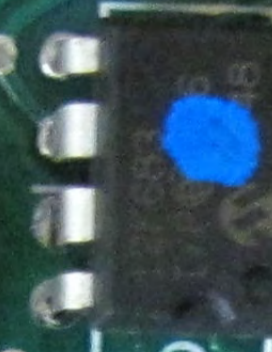
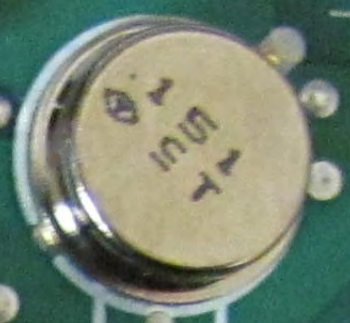
R2

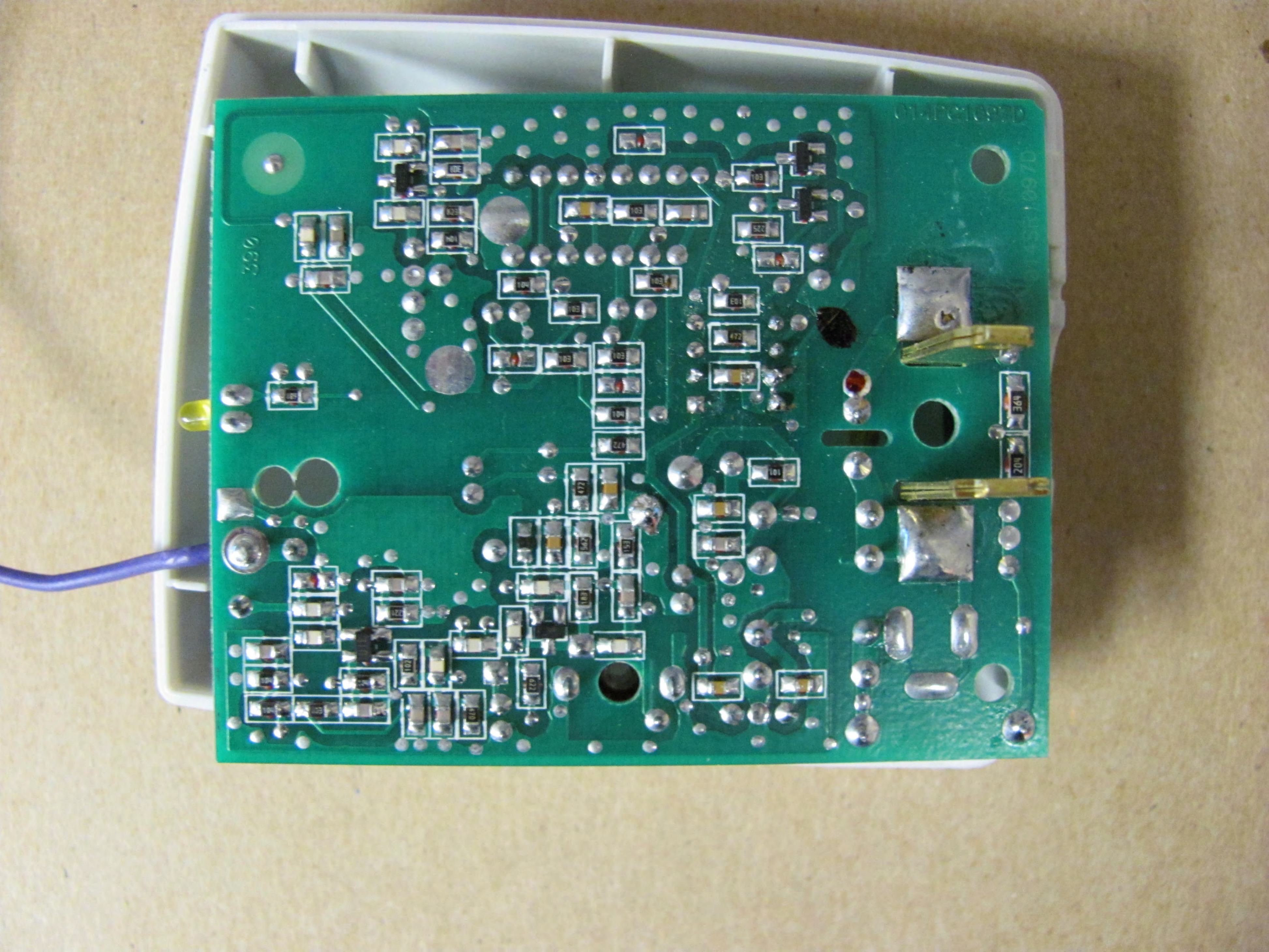
R3

C4

L1

XXXX





0932

014PCT1052D

Q169

102
102