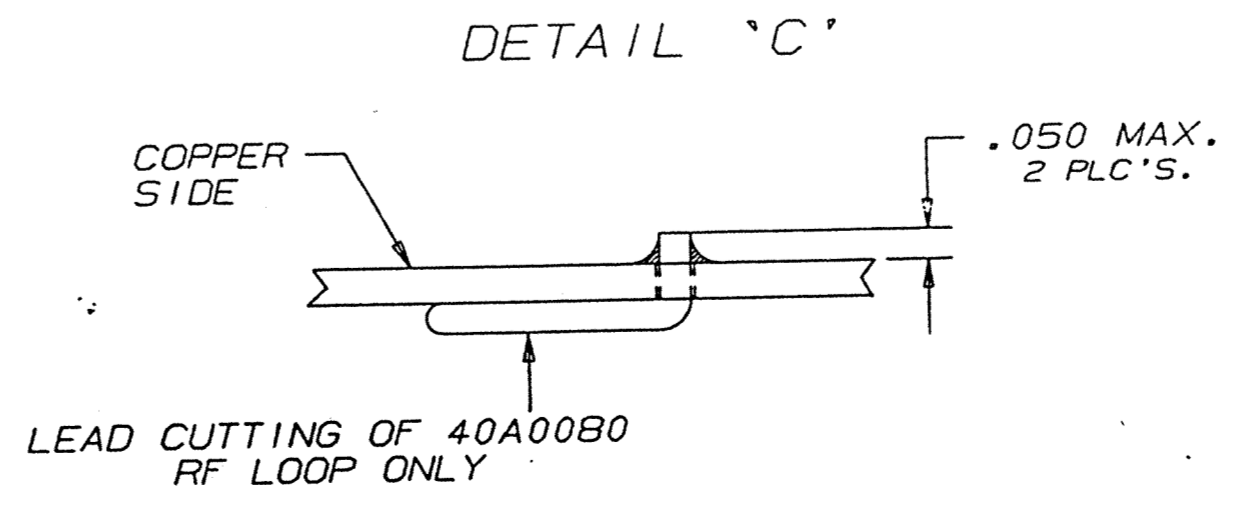
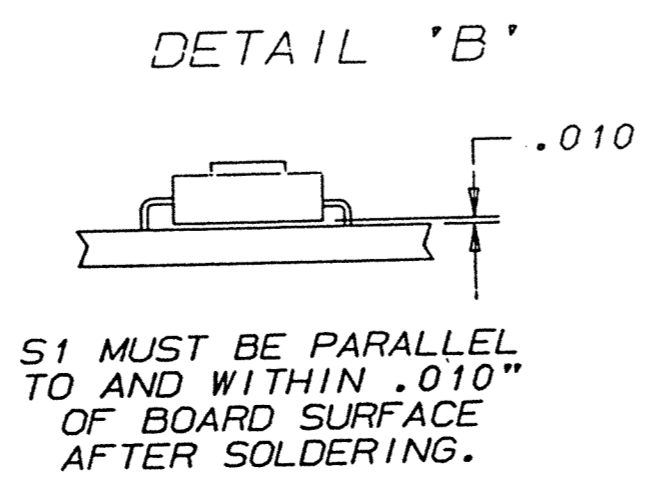
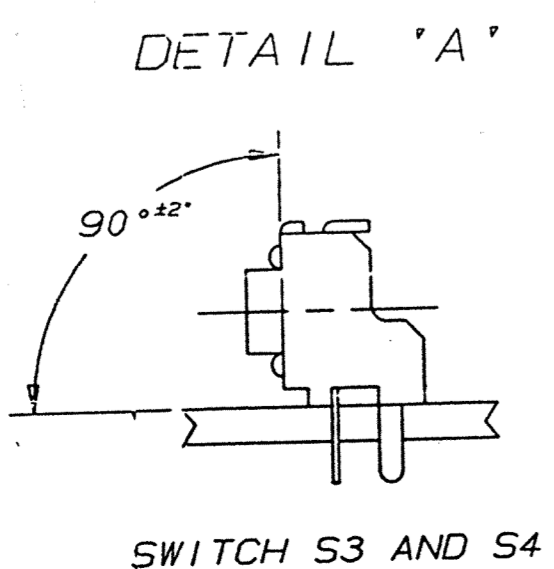
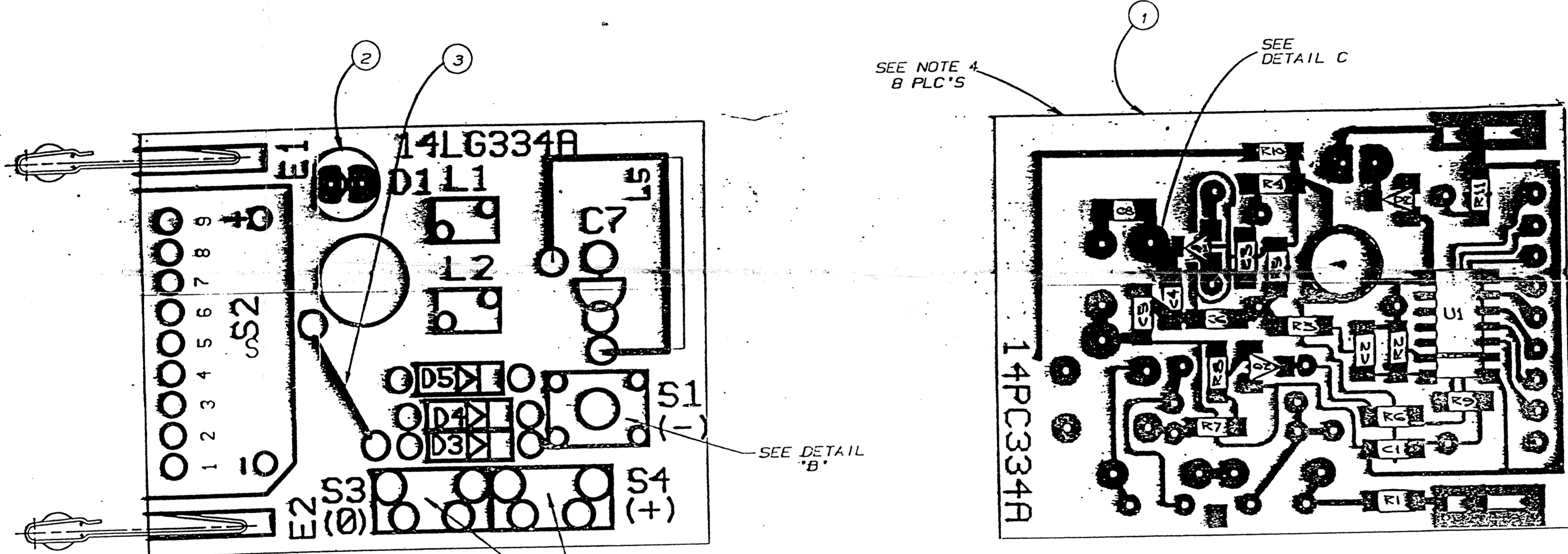


E.C.N.	DATE	BY	REVISION	ISSUE
C-135	5-15-89	LK	RELEASE	A
C-405	12-21-89	PK	184A0094-2 WAS 184A0059	B
D-153	3-27-90	PK	308C1535 WAS 308C1025 ADDED NOTE 6 REVISED NOTE 1 ADDED DETAIL C	C
D-285	7-3-90	PK	180B0126 WAS 180B0113	D
D-486	12-4-90	PK	C7, 308B431 WAS 308B425	E
E-028	1-16-91	PK	L5 40A0080 WAS 40A0072	F
J-5117	4/10/95	LK	C4 WAS 30D6300001	G
L-5376		AM	S1 WAS 180B01A0 S2 WAS 180C0048	H
		JG	UPDATED PART 03,4,5 05213.002A	

ITEM	PART NO.	DESCRIPTION	QTY.	ITEM	PART NO.	DESCRIPTION	QTY.	ITEM	PART NO.	DESCRIPTION	QTY.
				R1	308C4715	RES SMD 470 1/BW 5%	1	01	207C0074	TRANSISTOR NPN RF SMD	1
C1	30D610422R	CAP SMD .01uf X7R	1	R2	308C3945	RES SMD 390K 1/BW 5%	1	02	207C0069	TRANSISTOR,PNP SWITCH SMD	1
C2,C5	30D6102010	CAP SMD 100pf NPO	2	R3	308C3035	RES SMD 30K 1/BW 5%	1	S1	180B0120-3	SWITCH HORIZ MOMENTARY	1
C3	30D6150000	CAP SMD 1.5pf NPO	1	R4,11	308C1025	RES SMD 1K 1/BW 5%	2	S2	180C0068-1	TRINARY CODE SWITCH	1
C4	30D6300002	CAP SMD 3.0pf N220	1	R5	308C1535	RES SMD 15K 1/BW 5%	1	S3,S4	180B0126	SWITCH VERT MOMENTARY	2
C7	30B0431	CAP RF TUNING 1.8-5pf	1	R6,7,8	308C1035	RES SMD 10K 1/BW 5%	3	L5	40A0080	RF LOOP	1
C6,8	30D6680000	CAP SMD 6.8pf NPO	2	R9	---	NOT USED					
D1	52B0073	DIODE, LED	1	R10	308C1005	RES SMD 10 OHM 1/BW 5%	1				
D2	52B0071	DIODE ZENER SMD 5.1V	1	U1	125C0074	ENCODER I.C. SMD	1				
D3,4,5	52A0029	DIODE SIGNAL	3	L1,2	040A0059	COIL, 6.5T AIRWOUND	2				
E1,E2	203C0197	BATTERY TERM. POS.NEG.	2		014D0334	P.C.B.	1				
	52B0029				184A0094-2	SPACER, LED	1				
					217A0147	BARE WIRE JUMPER	1				

- NOTES:
1. ALL LEADED COMPONENTS TO BE INSERTED TO WITHIN .020" OF BODY OR PREFORM LIMITS UNLESS OTHERWISE SPECIFIED.
 2. TEST SPEC. REFERENCE: 190A0245
 3. SCHEMATIC REFERENCE: 182C0532
 4. SPEC. REFERENCE X-Y COORDINATES: 190A0219
 5. ALL FLUX USED IN SOLDER PROCESS MUST BE HALIDE-FREE.
 6. ALL ARRAYS TAB MUST BE CUT FLUSH TO EDGE OF P.C. BOARD BUT NO MORE THAN .005 INTO BOARD. ALL SHARP CORNERS MADE BY DEPANELING TOOL MAY HAVE A MAX OF .010 RADIUS.
 7. CLEANING OF ASSEMBLY WITH A CLEANING SOLVENT AFTER SOLDERING IS NOT PERMITTED.
 8. LEAD CLIPPING SPEC.: (WIRE LEADED PARTS ONLY) .050MIN., .095MAX.



9-25-97
L.K.

NOV 19 1998
MAR 05 1997

TOLERANCES UNLESS OTHERWISE SPECIFIED		MATERIAL		FINISH		HEAT TREAT	
±.010	±.005 DECIMAL						
±.004	±.002 FRACTIONS						
±.003	ON HOLES						
THIS COPY ISSUED		DRAWN BY	PK	DATE	10-89	SCALE	PART NUMBER
		CHECKED	BJW	6-89	NONE	001D3421	
		APPROVED					

CHAMBERLAIN
CONSUMER PRODUCTS GROUP
A UNIT OF QUOSSOIS INDUSTRIES, INC.

NAME: P.C.B. ASSY 3CH MINI TRANSMITTER, 390mhz