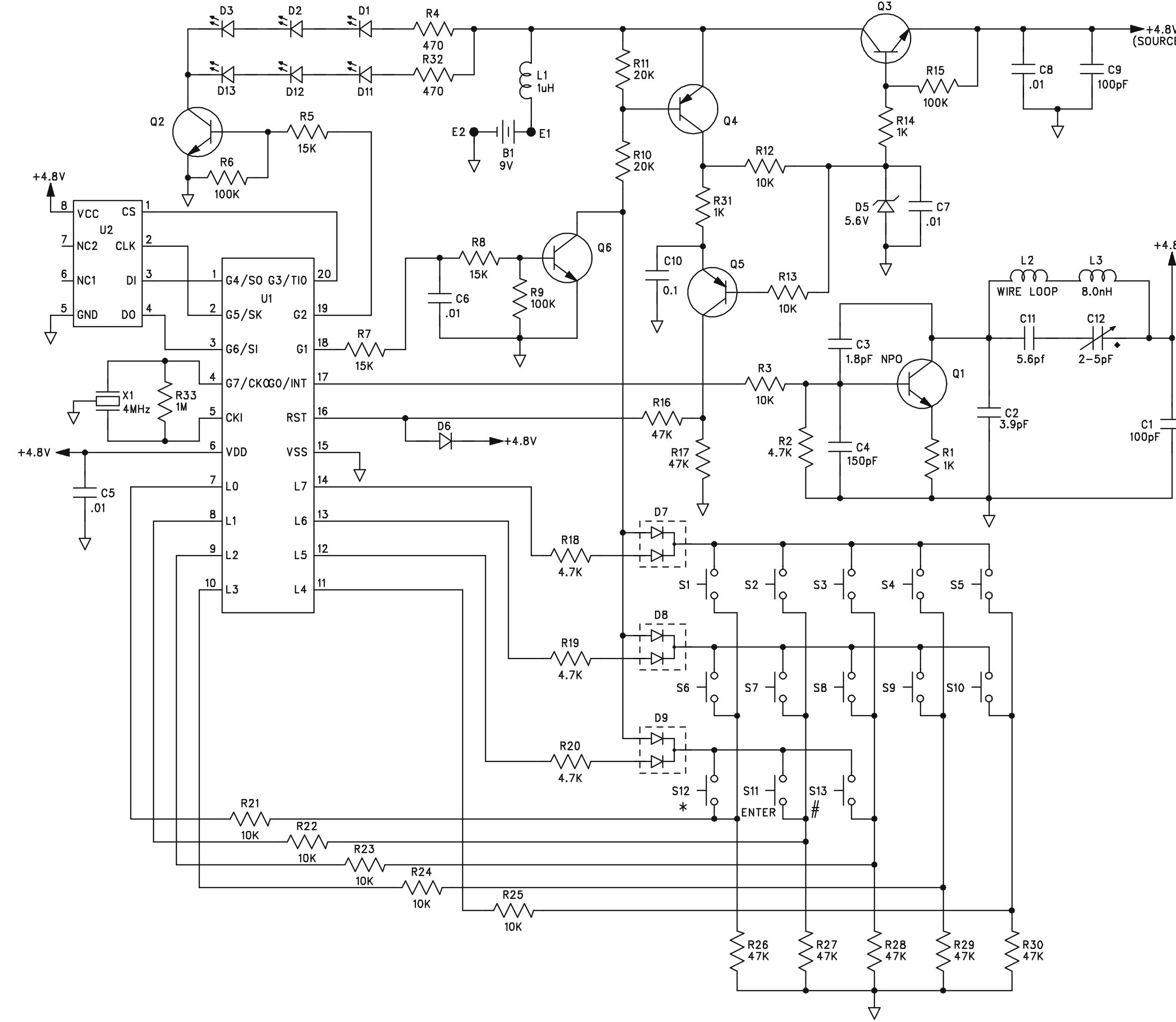


REF-DES	P/N	DESC	QTY
C1 C9	030D71020100	CAP SMD0805 100pF 5% NPO	2
C10	030D710522R0	CAP SMD0805 0.1uf 20% X7R	1
C11	030D75600000	CAP SMD0805 5.6pF 5% NPO	1
C12	30B0444	CAPACITOR, VARIABLE BOT ADJ	1
C2	030D73903000	CAP SMD0805 3.9pF +/- .1 NPO	1
C3	030D71803000	CAP SMD0805 1.8pF 5% NPO	1
C4	030D71520100	CAP SMD0805 150pf 5% NPO	1
C5-8	030D710422R0	CAP SMD0805 0.01uF 20% X7R	4
D1-3 D11-13	52B0074	DIODE, LED T1 YELLOW	6
D5	52B0107	DIODE, SMD ZENER 5.6V	1
D6	52B0065	DIODE, SMD SIGNAL	1
D7-9	52B0070	DIODE, SMD DUAL COMMON CATHODE	3
E1-2	023B0099	CONNECTION POINT, EXT WIRE	1
L1	40A0104	INDUCTOR, RF CHOKE 1uH SMD	1
L2	40A0118	WIRE LOOP	1
L3	40A0136	INDUCTOR, AIRWOUND 8.0nH	1
N1	14D0632	PC BOARD	1
Q1	207C0074	TRANSISTOR, SMD NPN RF	1
Q2-3 Q6	207C0073	TRANSISTOR, SMD NPN SWITCH	3
Q4-5	207C0069	TRANSISTOR, SMD PNP SWITCH	2
R1 R14 R31	311C1025	RES SMD0805 1.0K 5%	3
R10-11	311C2035	RES SMD0805 20K 5%	2
R16-17 R26-30	311C4735	RES SMD0805 47K 5%	7
R2 R18-20	311C4725	RES SMD0805 4.7K 5%	4
R3 R12-13 R21-25	311C1035	RES SMD0805 10K 5%	8
R33	311C1055	RES SMD0805 1.0M 5%	1
R4 R32	311C4715	RES SMD0805 470 5%	2
R5 R7-8	311C1535	RES SMD0805 15K 5%	3
R6 R9 R15	311C1045	RES SMD0805 100K 5%	3
S11		SWITCH, PRINTED CARBON	1
S1-10 S12-13		SWITCH, PRINTED CARBON	12
U1	125C0156	SOIC, ROLLCODE KEYLESS ENTRY	1
U2	125C0148	SOIC, ELECT. ERASABLE PROM 3V	1
X1	33B0039	RESONATOR, CERAMIC 4MHz	1

NOTES:

- ALL LEADED COMPONENTS TO BE INSERTED TO WITHIN 0.020" OF BODY OR PREFORM LIMITS.
- REFERENCE DOCUMENTS:  
TEST SPEC.: 190A0438
- PRECAUTIONS MUST BE TAKEN TO PREVENT FINGER OIL OR OTHER FILMS FROM BEING DEPOSITED ON THE CARBON ELECTRODES DURING HANDLING AND ASSEMBLY.
- ROUTE WIRES OF BATTERY CLIP E1/E2 THROUGH SLOT IN PCB AFTER WAVESOLDER.
- TO ENSURE PROPER TUNING RANGE "L2" MUST BE INSERTED WITHIN .010th AND PERPENDICULAR TO PCB BY 5 DEGREES.
- USAGE CHART ROLLING CODE.

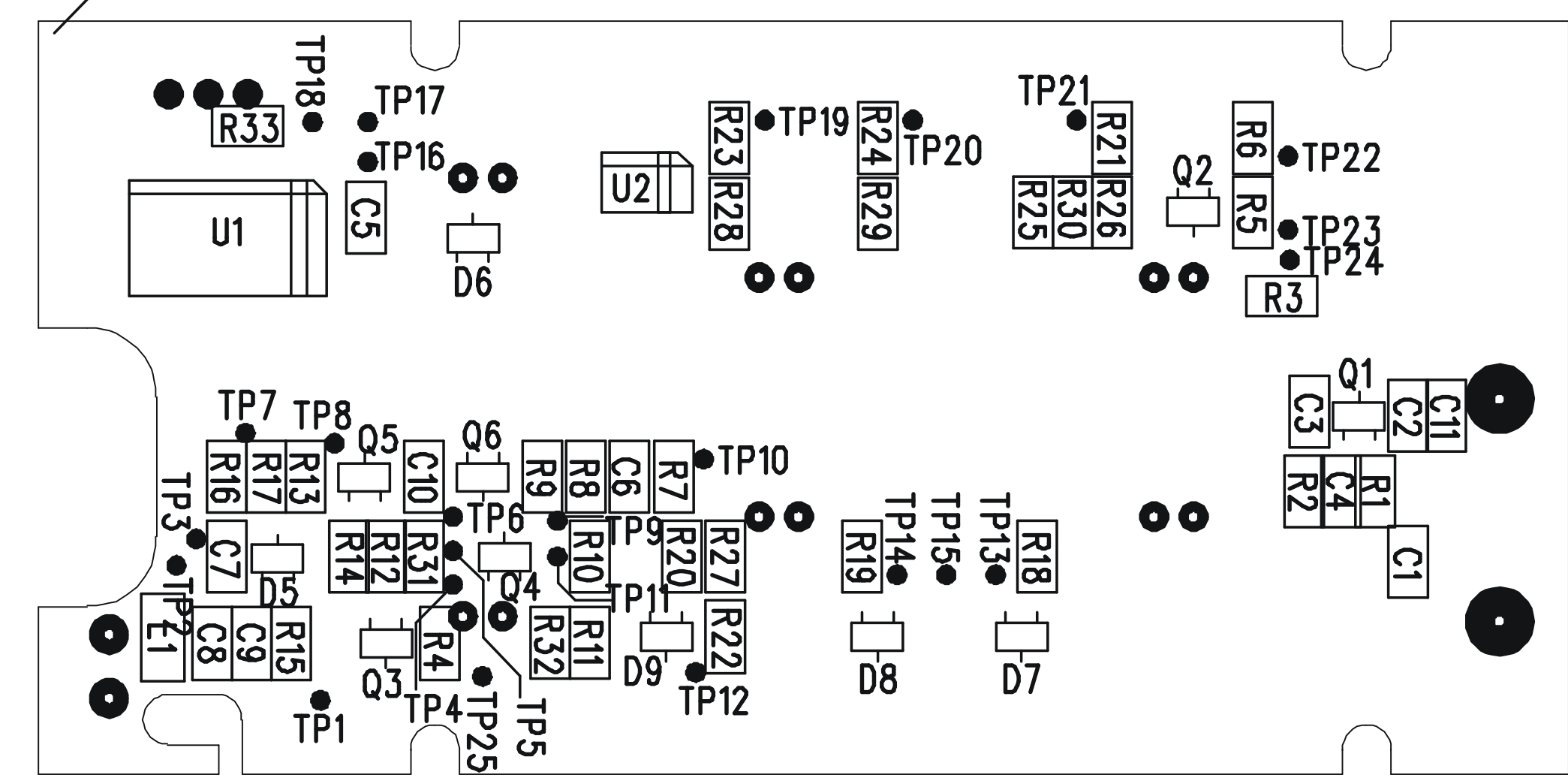
LIFT MASTER	001A5602
SEARS	001A5602-1



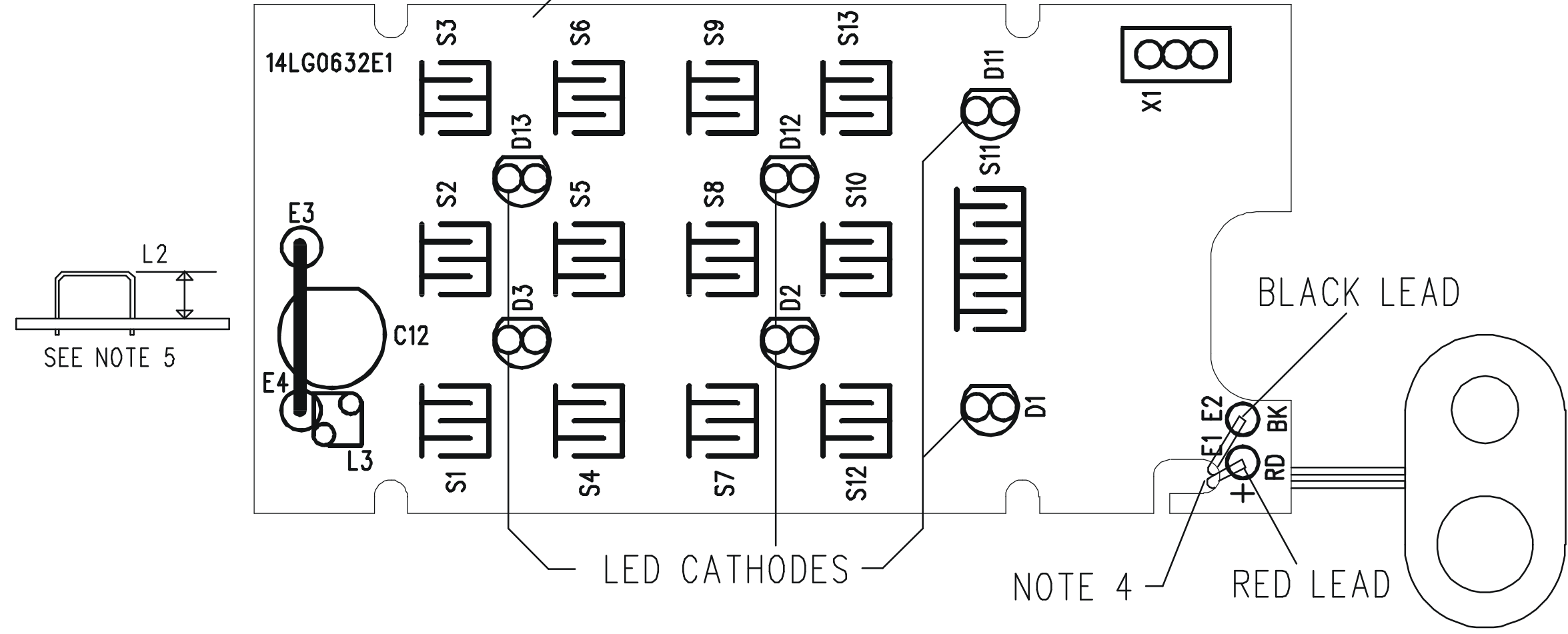
NEW PARTS  
C1  
C3  
L3  
C2

PART NUMBER				195D1631		E1
ECN/DATE	BY	APP	REVISION		REV	
	BW	BW	ENGINEERING BUILD			

① SOLDER SIDE



① COMPONENT SIDE



COMPONENT SIDE LEGEND

<b>CONFIDENTIAL</b>			
THIS DRAWING AND/OR THE INFORMATION CONTAINED HEREIN IS AND REMAINS THE SOLE PROPERTY OF AND IS PROPRIETARY TO THE CHAMBERLAIN GROUP, INC. (CHAMBERLAIN). THIS DRAWING AND/OR INFORMATION SHALL BE KEPT CONFIDENTIAL AND MAY NOT BE REPRODUCED, COPIED, MODIFIED, DISCLOSED, TRANSFERRED, OR MADE AVAILABLE TO OTHERS, EXCEPT WITH THE WRITTEN CONSENT OF CHAMBERLAIN. THIS DRAWING AND/OR ALL COPIES, IF ANY, ARE SUBJECT TO RETURN TO CHAMBERLAIN.			
THIS IS A COMPUTER GENERATED DRAWING		DO NOT SCALE DRAWING	
DO NOT CHANGE THIS DOCUMENT WITHOUT UPDATING THE COMPUTER DATA BASE.		TOLERANCE UNLESS OTHERWISE SPECIFIED: ±.010 .000 DECIMAL ±.005 .000 DECIMAL ON FRACTIONS ±.30° ON ANGLES ±.003 ON HOLES	
FINISH	MATERIAL	SCALE	PART NUMBER
			195D1631
DRAWN	BY	DATE	REV
IC	JPJ	26SEP96	E1
CHECKED	APPROVED	DATE	
		10/23/96	
		9/26/96	



NAME  
ASSY PCB, 315MHz  
KEYLESS ENTRY ROLLING CODE

SCALE	PART NUMBER	REV
	195D1631	E1