

Accessories (continued)

MOUNTING BRACKETS

RGL-CTL - Red/Green Traffic Light-Compact



Similar to RGL24LY function, but high-intensity LEDs and fully sealed enclosure. Ideal for single lane operations that require focused visibility.

CHAIN TENSIONERS (FOR JACKSHAFT TYPE OPERATORS)

50-HERK2 - Motion Detector 24V



Microwave motion detector with two independently programmable channels.

OPTION CARDS

Pluggable Loop Detector Board (Accessory Kit: LPEXPKIT)



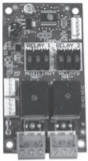
Plug-in connector, LOOPDETL, No wiring needed. 12VDC/3mA low power draw includes diagnostic and test feature, Prevents the door from closing on a vehicle in the path. Power efficient for maximum cycles on Battery Backup.

50450 - Switch Sectional Door Interlock



NEMA 4 switch disables operator control circuit when door is locked preventing electrical operation of the door.

Auxiliary Relay Board (Accessory Kit: HPAHAUX)



Easy to install accessory board to use for Auxiliary Limit Switches, other auxiliary devices such as lights, bells, horn/strobes and other warning devices.

ADDITIONAL CONTROL ACCESSORIES

86LM (15' [4.6 m])/86LMT (25' [7.6 m]) - Antenna Extension Kit



The antenna extension kit can be used with EXT-ANT for maximum radio receiver range.

RGL24LY - Red/Green Traffic Light



Indicates when a commercial door reaches the open position. Provides assurance of safe entering and exiting of the facility, reducing the potential for costly accidents.

Field Installable Accessory Kits

DC45AH

DC7AH

DCWALLCTL - 6-Pack Ctn.

XF208VDC - 208V Transformer Kit

XF600VDC - 600V Transformer Kit

AUXREL - Auxiliary Relay Board

LPEXP - Loop Detector Board

SLIDEKIT - Slide Door Accessory Kit

DUALAUXTROLLEY - Dual Aux Trolley Kit

BRAKEKITDCOPS - Brake Kit(s)

HORIZMODDC - Horizontal Mount Accessory Kit

CENTERMODDC - Center Mount Accessory Kit

HANDCRANKDC - Hand Crank Accessory Kit

DISCONNECTJDC - Disconnect for Jackshaft Operator Kit

HTRCOMMDC - Heater Kit

FOHMODDC - Front of Hood Mount

CHAINTENSDC - Chain Tensioner

HOISTMOUNTMODDC - GH to JHDC Mount Mode Plate

Sprocket Kits

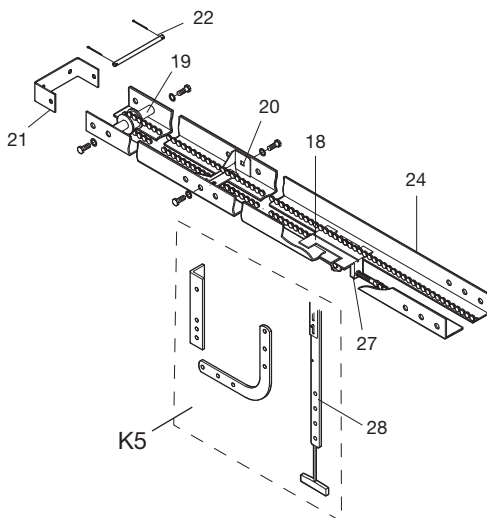
See "Door Sprockets" on page 15

Service Parts

Model TDC

SERVICE KITS

Item	Part #	Description
	K41-0372-000	Drive Sprocket 41 (1200/2200)
	K41-0373-000	Drive Sprocket 48 (700)



DOOR DRIVE CHAIN KITS

Item	Part #	Description	Item	Part #	Description
	022-0033	#48 Chain (1/3 & 1/2 HP) Doors 8' to 10'	15	15-48B10G1	Sprocket, 41B10x3/4"
	022-0034	#41 Chain (3/4 & 1 HP) Doors 8' to 10'	16	19-41047	Roller Chain, #41x47 Pitches
	022-0035	#48 Chain (1/3 & 1/2 HP) Doors to 12'	17	19-48033M	Limit Chain, #48x33 Pitches
	022-0036	#41 Chain (3/4 & 1 HP) Doors to 12'	18	75-10170	Trolley
	022-0037	#48 Chain (1/3 & 1/2 HP) Doors to 14'	19	75-10174	Front Idler Assembly
	022-0038	#41 Chain (3/4 & 1 HP) Doors to 14'	20	K75-10259	Tracker Spacer
	022-0039	#48 Chain (1/3 & 1/2 HP) Doors to 16'	21	10-10205	Header Bracket
	022-0040	#41 Chain (3/4 & 1 HP) Doors to 16'	22	11-10130	Header Pivot Pin
	022-0041	#48 Chain (1/3 & 1/2 HP) Doors to 18'	K5	K75-12870	Door Arm Kit Complete with: Curved Arm, Straight Arm, Door Bracket and Hardware.
	022-0042	#41 Chain (3/4 & 1 HP) Doors to 18'	24		Door Track* (Call for pricing and availability)
	022-0043	#48 Chain (1/3 & 1/2 HP) Doors to 20'	25	10-10011M1	Frame
	022-0044	#41 Chain (3/4 & 1 HP) Doors to 20'	26	K75-10030	Frame Spacer
	022-0455		27	1110197	Take Up Bolt
			28	K75-17034	Heavy Duty Straight Arm

Service Parts

Model JHDC

SERVICE KITS

Item	Part #	Description
	190925FT12	Hoist Chain (verify part number 25' and 29')
	K41-0269-000	Disengage Rope (red), Engage Rope (green), two screws
	15-50B12LGH	Drive Sprocket

Model TDC, JDC, and JHDC Common Parts

SERVICE KITS

Item	Part #	Description	Item	Part #	Description
	K41-0374-000	24 DC Motor, Gear Box & Encoder (Jack Shaft 700)		K41-0394-000	EMI Board 2200 (480Vac)
	K41-0375-000	24 DC Motor, Gear Box & Encoder (Jack Shaft 1200)		K41-0395-000	Control Box with Cover
	K41-0376-000	24 DC Motor, Gear Box & Encoder (Jack Shaft 2200)		K41-0380-000	Bridge Rectifier 700/1200
	K41-0377-000	24 DC Motor, Gear Box & Encoder (Trolley 700)		TBD	Bridge Rectifier 2200
	K41-0378-000	24 DC Motor, Gear Box & Encoder (Trolley 1200)		K41-0381-000	Toroidal Transformer 700Lb/120Vac-240VAC
	K41-0379-000	24 DC Motor, Gear Box & Encoder (Trolley 2200)		K41-0382-000	Toroidal Transformer 700Lb/480VAC
	K41-0409-000	1200 Extended duty Motor, Gear Box & Encoder Trolley		K41-0383-000	Toroidal Transformer 1200Lb/120Vac-240VAC
	K41-0410-000	1200 Extended duty Motor, Gear Box & Encoder Hoist		K41-0384-000	Toroidal Transformer 1200Lb/480VAC
	K41-0388-000	Main board (with Battery Backup)		K41-0385-000	Toroidal Transformer 2200Lb/120Vac-240VAC
	K41-0389-000	EMI Board 700 (120VAC 240VAC)		K41-0386-000	Toroidal Transformer 2200Lb/480VAC
	K41-0390-000	EMI Board 700 (480Vac)		K77-36541	Antenna
	K41-0391-000	EMI Board 1200 (120VAC 240VAC)		K41-0387-000	Encoder (with drive sprocket, snap ring, mounting plate, screws)
	K41-0392-000	EMI Board 1200 (480Vac)		TBD	Brake 24VDC (for 2200 operators)
	K41-0393-000	EMI Board 2200 (120VAC 240VAC)			

Warranty

LIFTMASTER® LIMITED WARRANTY

LiftMaster ("Seller") warrants to the first retail purchaser of this product, for the residence in which this product is originally installed, that it is free from defects in materials and/or workmanship for a specific period of time as defined below (the "Warranty Period"). The warranty period commences from the date of purchase.

WARRANTY PERIOD		
Parts	Motor and Controller	Accessories
1 Year	2 years	1 year

The proper operation of this product is dependent on your compliance with the instructions regarding installation, operation, and maintenance and testing. Failure to comply strictly with those instructions will void this limited warranty in its entirety.

If, during the limited warranty period, this product appears to contain a defect covered by this limited warranty, call 1-800-528-9131, toll free, before dismantling this product. You will be advised of disassembly and shipping instructions when you call. Then send the product or component, pre-paid and insured, as directed to our service center for warranty repair. Please include a brief description of the problem and a dated proof-of-purchase receipt with any product returned for warranty repair. Products returned to Seller for warranty repair, which upon receipt by Seller are confirmed to be defective and covered by this limited warranty, will be repaired or replaced (at Seller's sole option) at no cost to you and returned pre-paid. Defective parts will be repaired or replaced with new or factory-rebuilt parts at Seller's sole option. [You are responsible for any costs incurred in removing and/or reinstalling the product or any component].

ALL IMPLIED WARRANTIES FOR THE PRODUCT, INCLUDING BUT NOT LIMITED TO ANY IMPLIED WARRANTIES OF MERCHANTABILITY AND FITNESS FOR A PARTICULAR PURPOSE, ARE LIMITED IN DURATION TO THE APPLICABLE LIMITED WARRANTY PERIOD SET FORTH ABOVE FOR THE RELATED COMPONENT(S), AND NO IMPLIED WARRANTIES WILL EXIST OR APPLY AFTER SUCH PERIOD. Some States and Provinces do not allow limitations on how long an implied warranty lasts, so the above limitation may not apply to you. THIS LIMITED WARRANTY DOES NOT COVER NON-DEFECT DAMAGE, DAMAGE CAUSED BY IMPROPER INSTALLATION, OPERATION OR CARE (INCLUDING, BUT NOT LIMITED TO ABUSE, MISUSE, FAILURE TO PROVIDE REASONABLE AND NECESSARY MAINTENANCE, UNAUTHORIZED REPAIRS OR ANY ALTERATIONS TO THIS PRODUCT), LABOR CHARGES FOR REINSTALLING A REPAIRED OR REPLACED UNIT, REPLACEMENT OF CONSUMABLE ITEMS (E.G., BATTERIES IN REMOTE CONTROL TRANSMITTERS AND LIGHT BULBS), OR UNITS INSTALLED FOR NON-RESIDENTIAL USE. THIS LIMITED WARRANTY DOES NOT COVER ANY PROBLEMS WITH, OR RELATING TO, THE GARAGE DOOR OR GARAGE DOOR HARDWARE, INCLUDING BUT NOT LIMITED TO THE DOOR SPRINGS, DOOR ROLLERS, DOOR ALIGNMENT OR HINGES. THIS LIMITED WARRANTY ALSO DOES NOT COVER ANY PROBLEMS CAUSED BY INTERFERENCE. UNDER NO CIRCUMSTANCES SHALL SELLER BE LIABLE FOR CONSEQUENTIAL, INCIDENTAL OR SPECIAL DAMAGES ARISING IN CONNECTION WITH USE, OR INABILITY TO USE, THIS PRODUCT. IN NO EVENT SHALL SELLER'S LIABILITY FOR BREACH OF WARRANTY, BREACH OF CONTRACT, NEGLIGENCE OR STRICT LIABILITY EXCEED THE COST OF THE PRODUCT COVERED HEREBY. NO PERSON IS AUTHORIZED TO ASSUME FOR US ANY OTHER LIABILITY IN CONNECTION WITH THE SALE OF THIS PRODUCT.

Some states and provinces do not allow the exclusion or limitation of consequential, incidental or special damages, so the above limitation or exclusion may not apply to you. This limited warranty gives you specific legal rights, and you may also have other rights, which vary from state to state and province to province.

Wi-Fi® is a registered trademark of Wi-Fi Alliance.

© 2023 LiftMaster LLC

All Rights Reserved