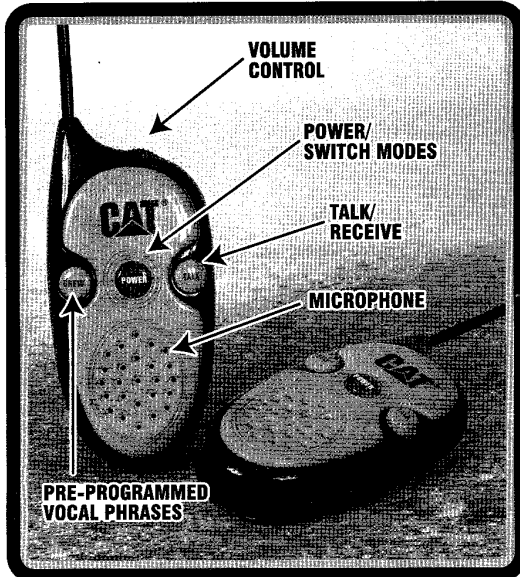


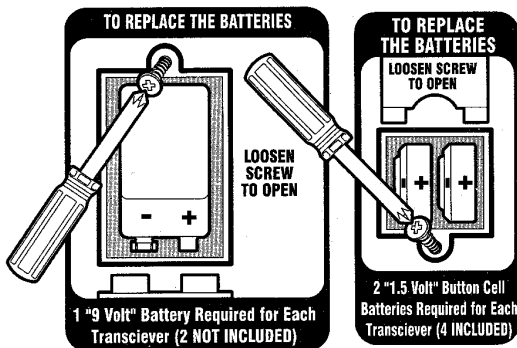
CAT[®]

WALKIE TALKIES



HOW TO OPERATE YOUR UNIT:

1. Open the main battery covers on both units and snap in one 9-Volt battery.
2. Replace the battery cover.
3. Turn on each unit by pressing the "Power" button. The button will light up indicating when it is on.
4. Press and hold the "Talk" button and speak to transmit.
5. Release the "Talk" button to receive.
6. Adjust volume by moving volume control to desired volume level.
7. Press the "Power" button a second time on each unit to turn off power.
8. Press the "Crew" button to hear pre-programmed Caterpillar[®] construction voice phrases.
9. When transmitting, speak in a clear voice with the microphone about 3" from your mouth.
10. Best transmission and reception are achieved when antenna is held in vertical position.



BATTERY REQUIREMENTS:

Two 9 V batteries required (not included).
Each Walkie Talkie requires Two AG13 1.5V Batteries for Crew Phrases (included).

FCC ID: HBS35625

MADE IN CHINA

This device complies with part 15 of the FCC Rules. Operation is subject to the following two conditions: (1) this device may not cause harmful interference. And (2) this device must accept any interference received, including interference that may cause undesired operation.

WARNING: changes or modifications to this unit not expressly approved by the party responsible for compliance could void the user's authority to operate the equipment.

NOTE: This equipment has been tested and found to comply with the limits for a Class B digital device, pursuant to Part 15 of the FCC Rules. These limits are designed to provide reasonable protection against harmful interference in a residential installation. This equipment generates, uses and can radiate radio frequency energy and, if not installed and used in accordance with the instructions, may cause harmful interference to radio communications.

However, there is no guarantee that interference will not occur in a particular installation. If this equipment does cause harmful interference to radio or television reception, which can be determined by tuning turning equipment off and on, the user is encouraged to try to correct the interference by one or more of the following measures:

- Reorient or relocate the receiving antenna.
- Increase the separation between the equipment and the receiver.
- Connect the equipment into an outlet on a circuit different from that to which the receiver is connected.
- Consult the dealer or an experienced radio/TV technician for help.



© 2007 Caterpillar
CAT, CATERPILLAR, EQUIPPED TO PLAY, their respective logos, ACERT and "Caterpillar Yellow" and the POWER EDGE trade dress, as well as corporate and product identity used herein, are trademarks of Caterpillar and may not be used without permission.
www.cat.com