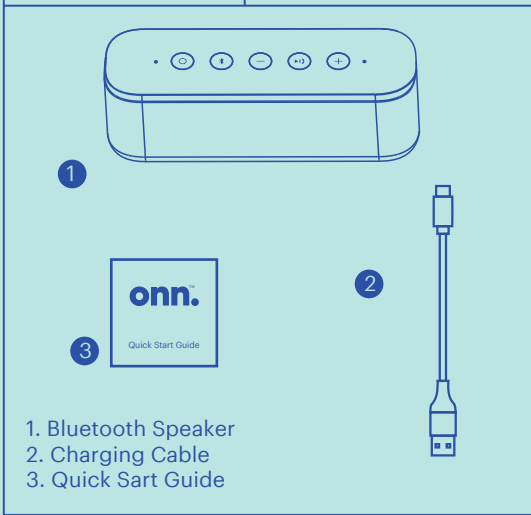
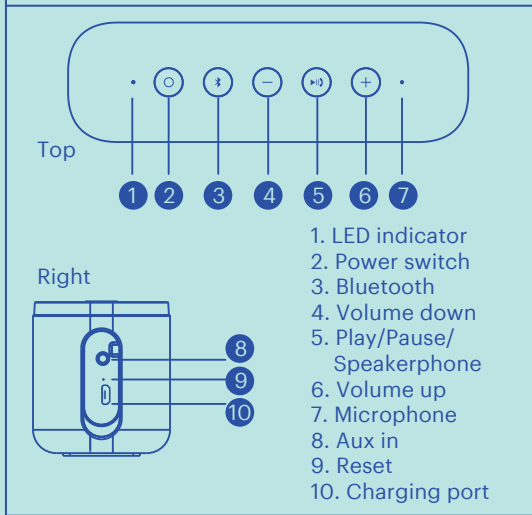


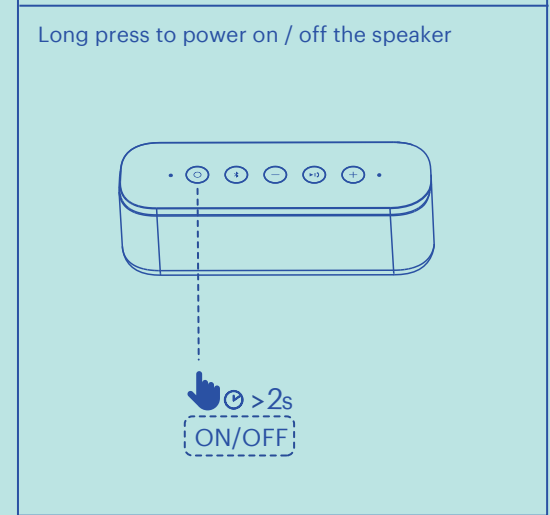
What's in the Box? Check to make sure you have everything below.



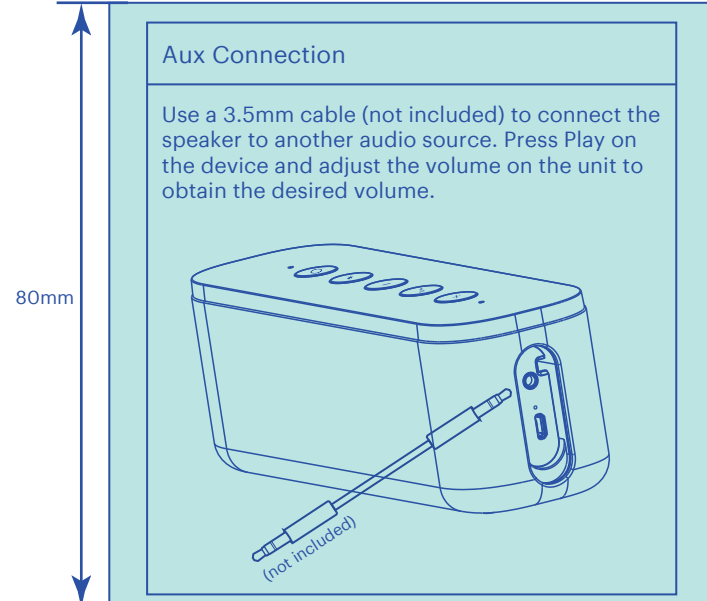
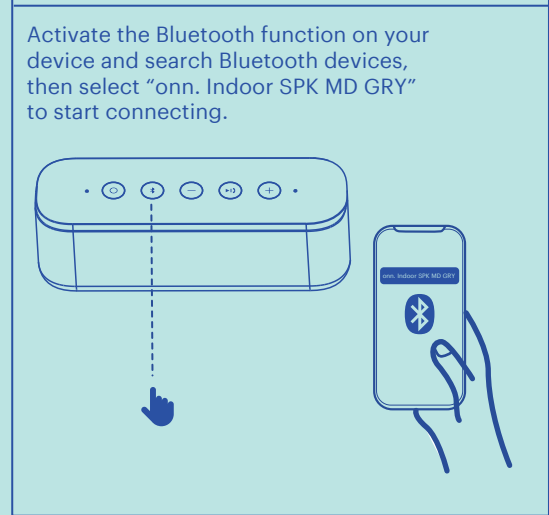
Get to Know Your indoor speaker



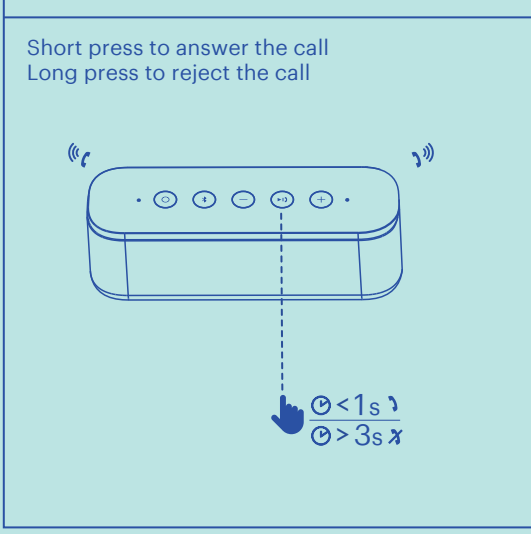
Power



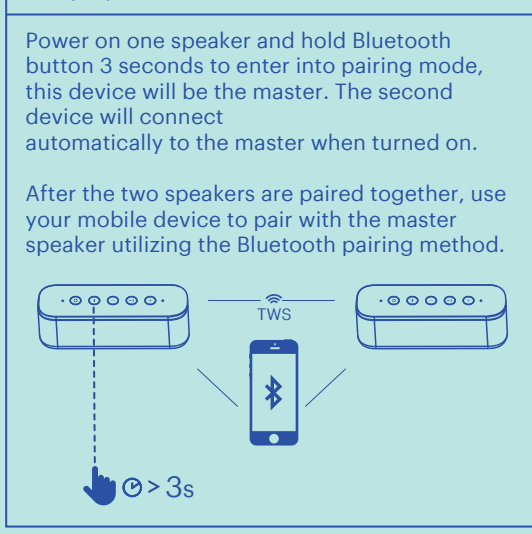
Bluetooth® Connection



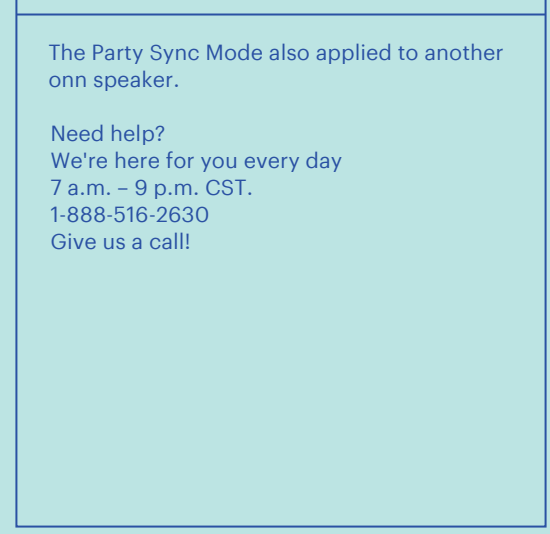
Answer calls



Party Sync Mode



But Wait ... There's More!



The Fine Print

USER MANUAL INSERTS FOR FCC ID

1. Warning: Changes or modifications to this unit not expressly approved by the party responsible for compliance could void the user's authority to operate the equipment.

2. NOTE: This equipment has been tested and found to comply with the limits for a Class B digital device, pursuant to Part 15 of the FCC Rules. These limits are designed to provide reasonable protection against harmful interference in a residential installation. This equipment generates, uses and can radiate radio frequency energy and, if not installed and used in accordance with the instructions, may cause harmful interference to radio communications. However, there is no guarantee that interference will not occur in a particular installation. If this equipment does cause harmful interference

The Fine Print

to radio or television reception, which can be determined by turning the equipment off and on, the user is encouraged to try to correct the interference by one or more of the following measures:

- Reorient or relocate the receiving antenna.
- Increase the separation between the equipment and receiver.
- Connect the equipment into an outlet on a circuit different from that to which the receiver is connected.
- Consult the dealer or an experienced radio/TV technician for help.

3. The device has been evaluated to meet general RF exposure requirement. The device can be used in portable exposure condition without restriction. Rating Label is located at the bottom of the product.