



# GEMBOX

## Universal Bluetooth® Speaker

### QAA14AV029

#### User Manual

Thank you for purchasing GEMBOX Universal Bluetooth® Speaker for smart phones, tablets, notebook computers and other Bluetooth enabled devices. This product combines high-tech innovation with design to provide you with years of dependability and enjoyment.

### Safety Precautions and Maintenance

Please read these operating and maintenance (servicing) instructions before installing and operating your speaker.

**Warning:** To reduce the risk of fire or electric shock, do not expose this speaker system to rain or moisture (including swimming pools or objects filled with liquids, such as vases or drinks).

### Important Safety Instructions

1. Always read Safety and Operation instructions before use. Retain instructions for later reference.
2. For indoor use only. Do not expose the speaker to liquid, moisture or humidity.
3. Do not use abrasive cleaners to clean the speaker case as they may damage the finish. Always unplug the unit before cleaning.
4. Do not expose the speaker to extremely high or low temperatures.
5. Keep the unit away from direct sunlight.
6. Use only accessories and attachments as supplied and designated in the instruction manual.
7. Do not attempt to open or modify the speaker in any way, as it does not contain any serviceable parts. Please refer all servicing to qualified personnel.
8. Please store the unit in a dry place that is free from extreme temperatures and dust.
9. Always operate the speaker on a flat and level surface.
10. Always operate the speaker away from children and small animals as they may play with the power cord and other small parts.
11. Always dispose of the packaging and the unit in accordance with the local regulations and in a responsible manner.

### The FCC Wants You To Know

Warning: Changes or modifications to this unit not expressly approved by the party responsible for compliance could void the user's authority to operate the equipment.

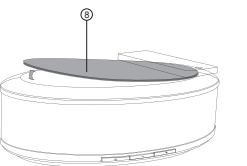
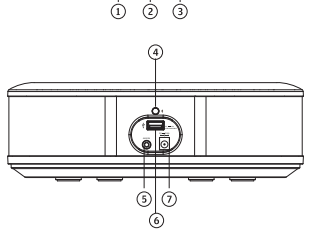
NOTE: This equipment has been tested and found to comply with the limits for a Class B digital device, pursuant to Part 15 of the FCC Rules. These limits are designed to provide reasonable protection against harmful interference in a residential installation. This equipment generates, uses and can radiate radio frequency energy and, if not installed and used in accordance with the instructions, may cause harmful interference to radio communications.

However, there is no guarantee that interference will not occur in a particular installation. If this equipment does cause harmful interference to radio or television reception, which can be determined by turning the equipment off and on, the user is encouraged to try to correct the interference by one or more of the following measures:

- Reorient or relocate the receiving antenna.
- Increase the separation between the equipment and receiver.
- Connect the equipment into an outlet on a circuit different from that to which the receiver is connected.
- Consult the dealer or an experienced radio/TV technician for help.

This device complies with Part 15 of the FCC Rules. Operation is subject to the following two conditions:  
(1) this device may not cause harmful interference, and  
(2) this device must accept any interference received, including interference that may cause undesired operation.

### Speaker Overview

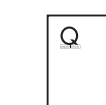


1. Power ON/OFF
2. Vol-
3. Vol+
4. Pair
5. AUX IN
6. USB Charging(2.1A)
7. DC IN
8. Rubber mat

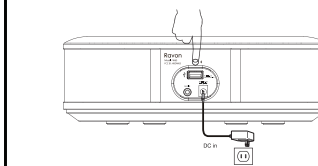
### Package Contents

- Main unit x 1
- 3.5mm audio cable x 1
- Rubber mat x 1

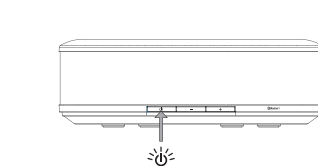
- User manual x 1
- AC Adaptor x 1



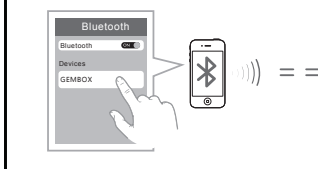
### Bluetooth connect



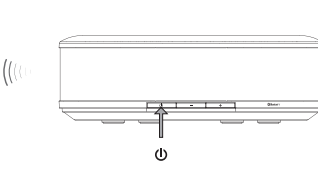
After turning on the unit, hold on the **0** button.



The blue LED will flash quickly.



Activate the Bluetooth function on your device and search for "GEMBOX" on the list.



After pairing successfully, a solid blue LED light will remain.

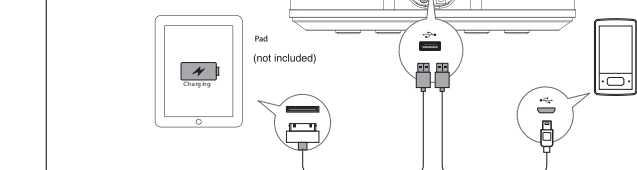
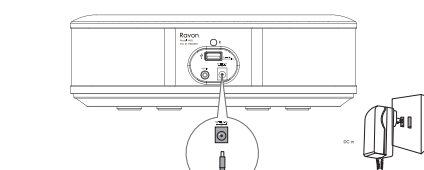
### Play



After successfully connection, you can begin to listen to music on the GEMBOX. Press +/- to adjust the volume.

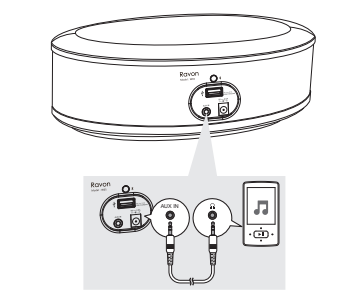
### Charge

Simply connect charging cable of mobile device to the USB port at the back of the unit.



### Aux in

Use the 3.5mm cable (included) to connect the speaker to another audio source.



### Features

- Seamlessly stream music from any Bluetooth® enabled device.
- Class-D digital amplifier.
- Supporting Bluetooth® protocol V3.0 and A2DP 1.2 audio streaming profile.
- Connect an iPod or MP3 player via 3.5mm port.
- Charge your device while listening to music via USB port (2.1A).

### Technical Specifications

- Transducers: 2x 2" (52mm)
- Power supply: AC100~240V, 50/60Hz
- Amplifier power: 2 x 5W
- Frequency response: 200Hz ~ 20kHz
- Signal-to-noise ratio: > 80dB
- Bluetooth transmitter frequency range: 2.402 ~ 2.480GHz
- Bluetooth transmitter power: 0 ~ 4dBm
- Dimensions (W x D x H): 262mm x 157.5mm x 86mm



Fenda Hi-tech Park, Zhoushi Road, Shiyao, Baoan, Shenzhen, China  
Email: info@ravon-audio.com  
www.ravon-audio.com