

Flat size (W×H): 16.58 x 11.69 in (421.22 x 296.93 mm.)
 Final folded size: 4.145 x 11.69 in (105.305 x 296.93 mm.)

INSIGNIA

v1
R3

QUICK SETUP GUIDE

Bluetooth Bookshelf Speakers

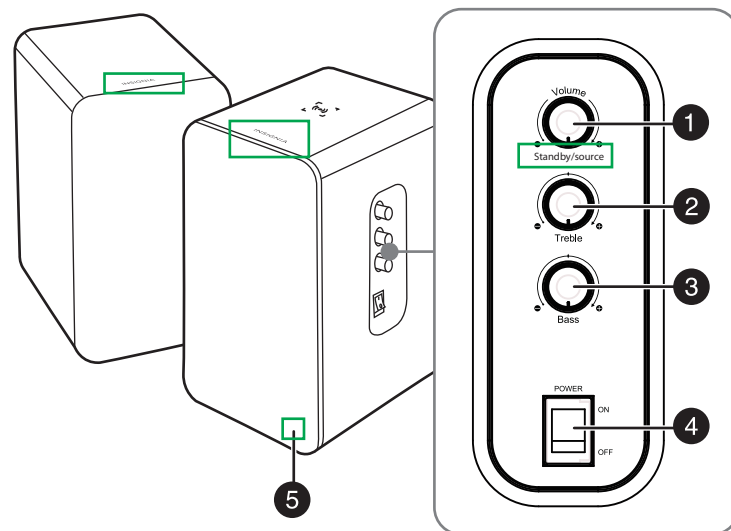
NS-HBTSS116

PACKAGE CONTENTS

- Speakers (2)
- 3.5 mm cable (included)
- RCA input cable
- Speaker Wire
- Remote control w/batteries
- Quick Setup Guide

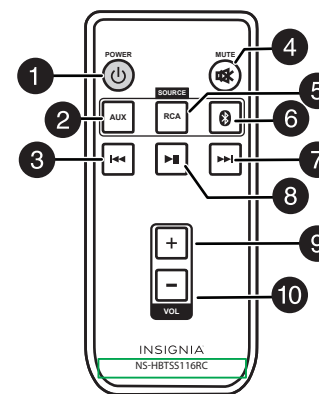
FEATURES

- Wirelessly stream from any Bluetooth device
- Volume, treble, and bass controls on the side panel
- NFC for easy Bluetooth pairing
- High efficient energy saving design for low power consumption



#	ITEM	DESCRIPTION
1	Volume/Source knob	Switch mode and control the volume. Press repeatedly to cycle through the available modes (AUX [default], RCA, and Bluetooth). Hold down to turn on standby mode.
2	Treble knob	Adjusts the treble level.
3	Bass knob	Adjusts the bass level.
4	On/Off switch	Turns the power on or off.
5	Indicator LED	Indicates the mode (Standby, AUX, and RCA) and pairing status of the speakers.

Remote Control



#	ITEM	DESCRIPTION
1	POWER	Press to active into standby mode.
2	AUX	Press to enter AUX mode. The green LED indicator light blinks slowly.
3	Previous ◀◀	Press to select the previous song while in Bluetooth mode.
4	MUTE	Press to mute or unmute the sound.
5	RCA	Press to enter RCA mode. The green LED indicator lights solid.
6	Bluetooth mode	Press to enter Bluetooth mode. The blue LED indicator turns on. When in Bluetooth mode, press and hold to enter pairing mode.
7	Next ▶▶	Press to select next song while in Bluetooth mode.
8	Play/Pause ▶◥	Press to play/pause while in Bluetooth mode.
9	VOL +	Turns the volume up.
10	VOL -	Turns the volume down.

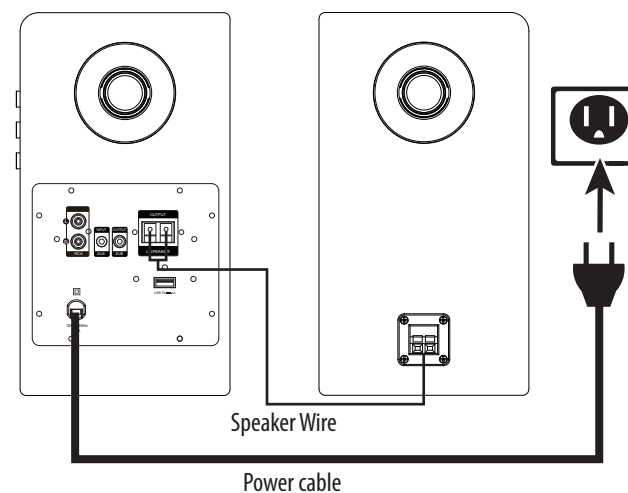
CONNECT THE SPEAKERS

Connect the Power cable

Plug the power cable into a power outlet or surge protector.

Connect the speakers

Speakers are connected using the speaker wire that is provided. Connect the red wire to the red (+) terminals and the black wire to the black (-) terminals. Use enough wire to position the speakers where you want them.



TURNING YOUR SPEAKER ON AND OFF

Move the ON/OFF switch on the side of your speaker to the ON position. When you first turn on your speakers, the LED blinks GREEN to indicate they are in AUX mode. Switch to Bluetooth mode by pressing the Bluetooth button on the remote, or by pressing the Volume/Source on the speaker twice. When the speakers are in Bluetooth pairing mode, the indicator LED blinks blue.

CONNECTING WITH BLUETOOTH

- 1 Make sure that your Bluetooth device is turned on and within 33 feet (10 meters) of your speaker.
- 2 On your speaker, press the **Volume/Source** Knob twice to select Bluetooth. Your speaker enters pairing mode and the LED blinks blue. **Note:** Press and hold the **Volume/Source** Knob to return to pairing mode.
- 3 Turn on your Bluetooth device and turn on Bluetooth. Set your device to pairing mode, then select **NS-HBTSS116**. See the instructions that came with your Bluetooth device for information about pairing.
- 4 If you are asked for a password, enter **0000**. When pairing is complete, the LED lights solid blue.
- 5 To disconnect from the paired Bluetooth device, press and hold the **Volume/Source** Knob on your speaker for three seconds. Your speaker disconnects from the Bluetooth device and enters pairing mode again.

LED	DESCRIPTION
Blinks blue	Speaker is in pairing mode
Solid blue	Speaker is paired
Solid red	Standby mode
Blinks green	AUX Mode
Solid green	RCA Mode

RECONNECTING TO A PAIRED DEVICE

When your speaker is not paired to a device, the LED blinks blue slowly.

Your speaker loses the Bluetooth connection if you...	To reconnect...
Turn off your speaker.	Turn on your speaker. Your speaker searches for the last connected Bluetooth device and reconnects.
Move the Bluetooth device out of range.	Make sure that your Bluetooth device is within 33 feet of your speaker.
Turn off your Bluetooth device.	Turn on your Bluetooth device, then make sure that Bluetooth is on.
Turn off Bluetooth on your Bluetooth device.	Turn on Bluetooth on your Bluetooth device.
Connect your Bluetooth device to another Bluetooth device.	Disconnect your Bluetooth device from the other Bluetooth device, then set your device to pairing mode. Select NS-HBTSS116 on your Bluetooth device.

PAIRING A BLUETOOTH DEVICE SUPPORTING NFC

If your Bluetooth device supports Near Field Communication (NFC), make sure that the NFC feature is active. Touch the NFC area of your Bluetooth device to the top of your NS-HBTSS116 speaker in order to automatically pair.

Note: If your phone has NFC support but it is running an OS below Android 4.1, you will need to download an NFC Bluetooth APP from Google play or a similar online store.

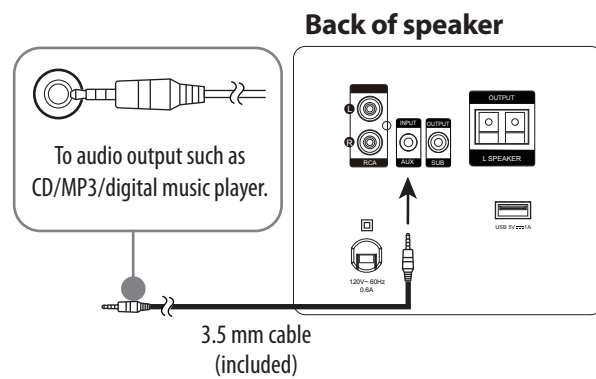
LISTENING TO MUSIC

- 1 Press the **Volume/Source** knob on your speaker, then connect to your Bluetooth device.
- 2 Begin playback on your Bluetooth device.
- 3 Adjust the volume on your speaker by pressing the + or - buttons.

Note: Use the controls on your Bluetooth device or on the included remote control to control playback.

PLAYBACK USING AUX IN

- 1 Connect an external sound source, such as an MP3 player, by plugging a 3.5 mm audio cable (included) into the INPUT AUX jack on your speaker.



- 2 Press the **Volume/Source** knob to enter AUX mode. The LED lights green.
- 3 Start playback on the external device.
- 4 Press + and - to adjust the volume.
- 5 Control playback using the controls on the audio device.



TROUBLESHOOTING

PROBLEM	SOLUTION
No power	<ul style="list-style-type: none"> • Make sure that your speaker is plugged in. • Make sure that your speaker is turned on.
No sound or low volume	<ul style="list-style-type: none"> • Make sure that your Bluetooth device is turned on, Bluetooth is turned on, and NS-HBTSS116 is selected. • Turn up the volume on your speaker. • Turn up the volume on your Bluetooth device. • Make sure that your Bluetooth device is not muted. • Make sure that your speaker is not paired to another Bluetooth device. • Make sure that your Bluetooth device is not paired to another Bluetooth device.
Cannot establish Bluetooth connection	<ul style="list-style-type: none"> • Shorten the distance between your speaker and your Bluetooth device. • Turn your devices off, then on. Re-pair your speaker and your Bluetooth device. • Make sure that your speaker is not paired to another Bluetooth device. • Make sure that your speaker and Bluetooth device are both in pairing mode. • Make sure that your Bluetooth device supports Bluetooth v4.0 and below. • Make sure that your Bluetooth device is not connected to any other device. • Make sure that you have selected NS-HBTSS116 on your Bluetooth device.
My Bluetooth device keeps unpairing	<ul style="list-style-type: none"> • Shorten the distance between your speaker and your Bluetooth device. • If the battery on your Bluetooth device is low, recharge the battery.
“NS-HBTSS116” does not appear on my Bluetooth device	<ul style="list-style-type: none"> • Shorten the distance between your speaker and your Bluetooth device. • Put your speaker into pairing mode, then refresh your list of Bluetooth devices. For more information, see the documentation that came with your Bluetooth device.

IMPORTANT SAFETY INSTRUCTIONS

- Never expose the product to fire as this could result in personal injury.
- Do not store the product in an extremely cold or warm environment.
- Never dismantle the product.
- Never let children play with the product.
- Do not expose the product to dampness or moisture.
- The product should not be exposed to dripping or splashing.

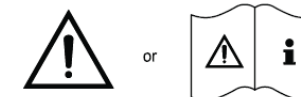
1. Read these instructions – All the safety and operating instructions should be read before this product is operated.
2. Keep these instructions – The safety and operating instructions should be retained for future reference.
3. Heed all warnings – All warnings on the appliance and in the operating instructions should be adhered to.
4. Follow all instructions – All operating and use instructions should be followed.
5. Do not use this apparatus near water – The appliance should not be used near water or moisture – for example, in a wet basement or near a swimming pool, and the like.
6. Clean only with dry cloth.
7. Do not block any ventilation openings. Install in accordance with the manufacture’s instructions.
8. Do not install near any heat sources such as radiators, heat registers, stoves, or other apparatus (including amplifiers) that produce heat.

9. Do not defeat the safety purpose of the polarized or grounding plug. A polarized plug has two blades with one wider than the other. A grounding plug has two blades and a third grounding prong. The wide blade or the third prong is provided for your safety. If the provided plug does not fit into your outlet, consult an electrician for replacement of the obsolete outlet.
10. Protect the power cord from being walked on or pinched particularly at the plugs, convenience receptacles, and at the point where they exit from the apparatus.
11. Only use attachments/accessories specified by the manufacturer.
12.  Use only with the cart, stand, tripod, bracket, or table specified by the manufacturer, or sold with the apparatus. When a cart or rack is used, use caution when moving the cart/apparatus combination to avoid injury from tip-over.
13. Unplug the apparatus during lightning storms or when unused for long periods of time.
14. Refer all servicing to qualified personnel. Servicing is required when the apparatus has been damaged in any way, such as power supply cord or plug is damaged, liquid has been spilled or objects have fallen into the apparatus has been exposed to rain or moisture, does not operate normally, or has been dropped.
15. Do not install this equipment in a confined or building-in space such as a book case or similar unit, and remain a well ventilation conditions. The ventilation should not be impeded by covering the ventilation openings with items such as newspaper, table-cloths, curtains etc.
16. **WARNING:** To reduce the risk of fire or electric shock, do not expose this apparatus to rain or moisture. The apparatus shall not be exposed to dripping or splashing and that objects filled with liquids, such as vases, shall not be placed on apparatus.
17. **WARNING:** The mains plug is used as disconnect device, the disconnect device shall remain readily operable.
18.  This equipment is a Class II or double insulated electrical appliance. It has been designed in such a way that it does not require a safety connection to electrical earth.



19. This lightning flash with arrowhead symbol within an equilateral triangle is intended to alert the user to the presence of non-insulated “dangerous voltage” within the product’s enclosure that may be of sufficient magnitude to constitute a risk of electric shock.
 - Warning: To reduce the risk of electric shock, do not remove cover (or back) as there are no user-serviceable parts inside. Refer servicing to qualified personnel.
 - The exclamation point within an equilateral triangle is intended to alert the user to the presence of important operating and maintenance instructions in the literature accompanying the appliance.
20. The equipment shall be used at maximum 35 degree C ambient temperature.
21. The batter(battery or batteries of battery pack)shall not be exposed to excessive heat such as sunshine,fire or the like.

22.



WARNING DO NOT INGEST BATTERY, CHEMICAL BURN HAZARD

[The remote control supplied with] This product contains a coin/button cell battery. If the coin/button cell battery is swallowed, it can cause severe internal burns in just 2 hours and can lead to death.

Keep new and used batteries away from children. If the battery compartment does not close securely, stop using the product and keep it away from children. If you think batteries might have been swallowed or placed inside any part of the body, seek immediate medical attention.

LEGAL NOTICES

This device complies with Part 15 of the FCC Rules. Operation is subject to the following two conditions: (1) this device may not cause harmful interference, and (2) this device must accept any interference received, including interference that may cause undesired operation.

FCC Caution:

Changes or modifications not expressly approved by the party responsible for compliance could void the user’s authority to operate the equipment.

FCC Statement:

This equipment has been tested and found to comply with the limits for a Class B digital device, pursuant to part 15 of the FCC Rules. These limits are designed to provide reasonable protection against harmful interference in a residential installation. This equipment generates, uses and can radiate radio frequency energy and, if not installed and used in accordance with the instructions, may cause harmful interference to radio communications. However, there is no guarantee that interference will not occur in a particular installation. If this equipment does cause harmful interference to radio or television reception, which can be determined by turning the equipment off and on, the user is encouraged to try to correct the interference by one or more of the following measures:

- Reorient or relocate the receiving antenna.
- Increase the separation between the equipment and receiver.
- Connect the equipment into an outlet on a circuit different from that to which the receiver is connected.
- Consult the dealer or an experienced radio/TV technician for help.

RSS-Gen & RSS-210 statement:

This device complies with Industry Canada licence-exempt RSS standard(s).

Operation is subject to the following two conditions: (1) this device may not cause interference, and (2) this device must accept any interference, including interference that may cause undesired operation of the device.

Le présent appareil est conforme aux CNR d'Industrie Canada applicables aux appareils radio exempts de licence. L'exploitation est autorisée aux deux conditions suivantes : (1) l'appareil ne doit pas produire de brouillage, et (2) l'utilisateur de l'appareil doit accepter tout brouillage radioélectrique subi, même si le brouillage est susceptible d'en compromettre le fonctionnement.

RSS-102 Statement:

This equipment complies with Industry Canada radiation exposure limits set forth for an uncontrolled environment.

Cet équipement est conforme à l'exposition aux rayonnements Industry Canada limites établies pour un environnement non contrôlé.

RF Exposure Statement

To maintain compliance with FCC’s RF Exposure guidelines. This equipment should be installed and operated with minimum distance between 20 cm the radiator your body: Use only the supplied antenna.

ONE-YEAR LIMITED WARRANTY

Visit www.insigniaproducts.com for details.

CONTACT INSIGNIA:

1-877-467-4289 (U.S. and Canada)

01-800-926-3000 (Mexico)

www.insigniaproducts.com

INSIGNIA is a trademark of Best Buy and its affiliated companies
Distributed by Best Buy Purchasing, LLC
7601 Penn Ave South, Richfield, MN 55423 U.S.A.
©2016 Best Buy. All rights reserved.
Made in China