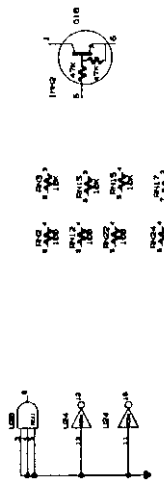


- NOTES:
1. REFERENCE ASSEMBLY DRAWING 24-10000-000.
 2. ALL RESISTORS ARE IN OHMS. 5% 1/16 WATT UNLESS NOTED OTHERWISE.
 3. ALL CAPACITORS ARE IN MICROFARADS. 50V. 10% UNLESS NOTED OTHERWISE.
- ▲ THE FLASH POINT WILL BE SOCKETED FOR THE ENGINEERING PROTOTYPES.
- ▲ THE SHIELD IS POPULATED WITH A RADIO AT THE NEXT ASSEMBLY LEVEL.

POWER AND GROUND LIST - 1 11-Mar-1967 10:05:30.00

DESCRIPTION	PART NO.	QTY	LOC
U1	74C01-201A	1	1A
U2	74C02-201A	1	1A
U3	74C03-201A	1	1A
U4	74C04-201A	1	1A
U5	74C05-201A	1	1A
U6	74C06-201A	1	1A
U7	74C07-201A	1	1A
U8	74C08-201A	1	1A
U9	74C09-201A	1	1A
U10	74C10-201A	1	1A
U11	74C11-201A	1	1A
U12	74C12-201A	1	1A
U13	74C13-201A	1	1A
U14	74C14-201A	1	1A
U15	74C15-201A	1	1A
U16	74C16-201A	1	1A
U17	74C17-201A	1	1A
U18	74C18-201A	1	1A
U19	74C19-201A	1	1A
U20	74C20-201A	1	1A

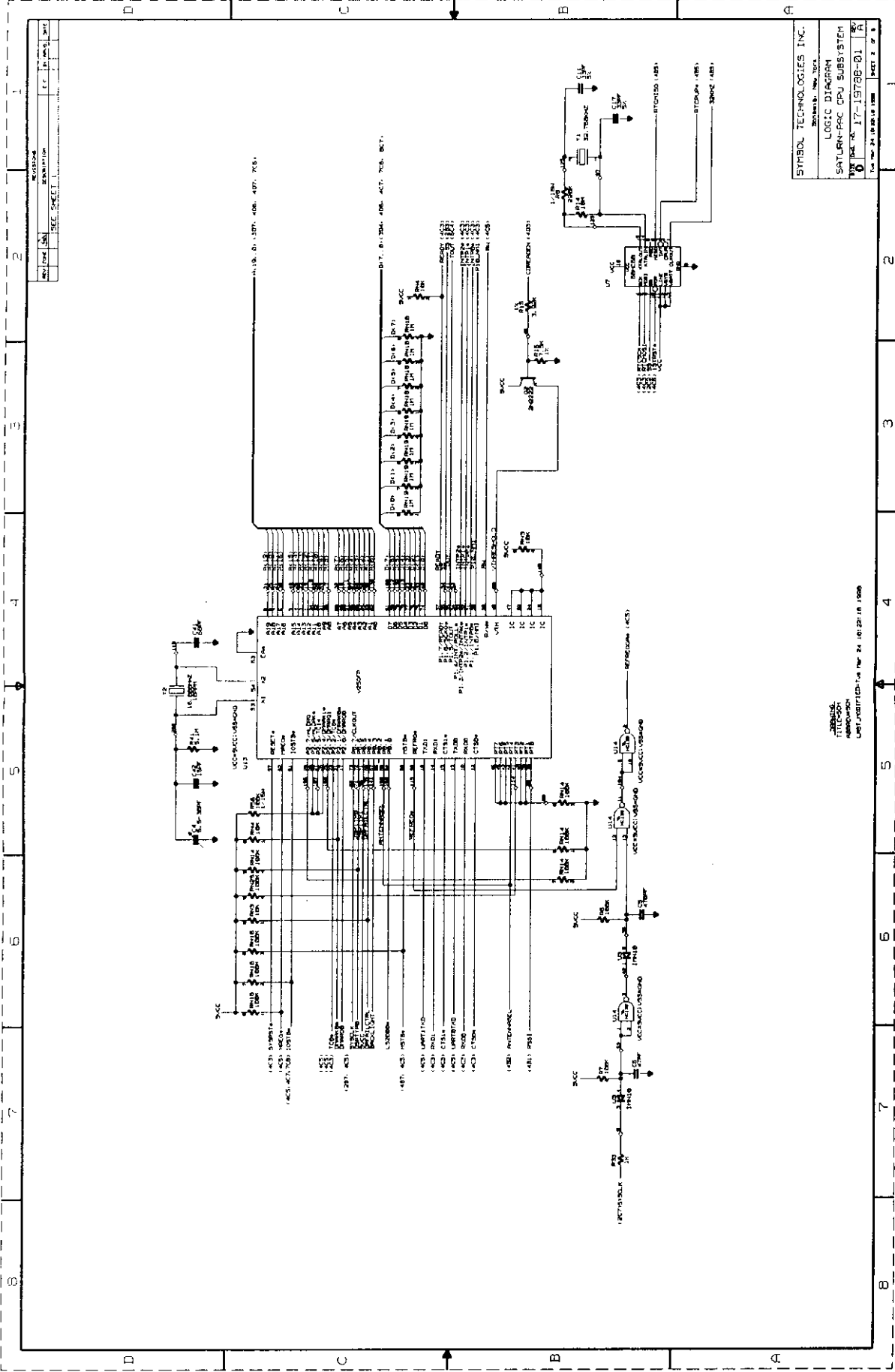
SPARES

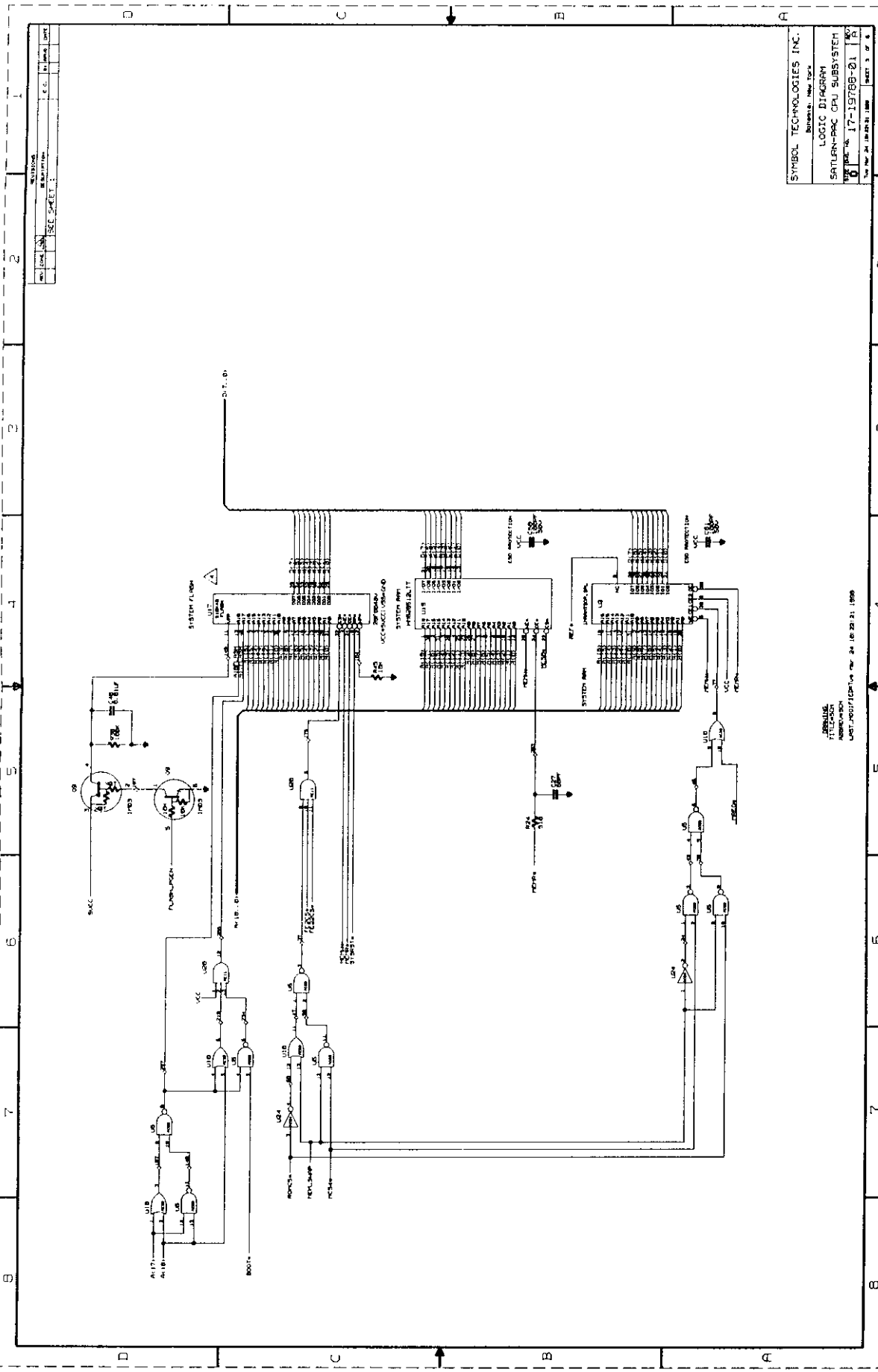


REV.	DATE	DESCRIPTION	APPROVAL	DATE
1	11-MAR-67	POWER AND GROUND LIST		

SYMBOL TECHNOLOGIES INC.
 17-13788-01
 LOGIC DIAGRAM
 SATURN-RAC CPU SUBSYSTEM

UNIT ASSIGNED ON MAR 24 10:27:18 1968
 DIRECTOR: W. W. WILSON
 DIRECTOR: W. W. WILSON





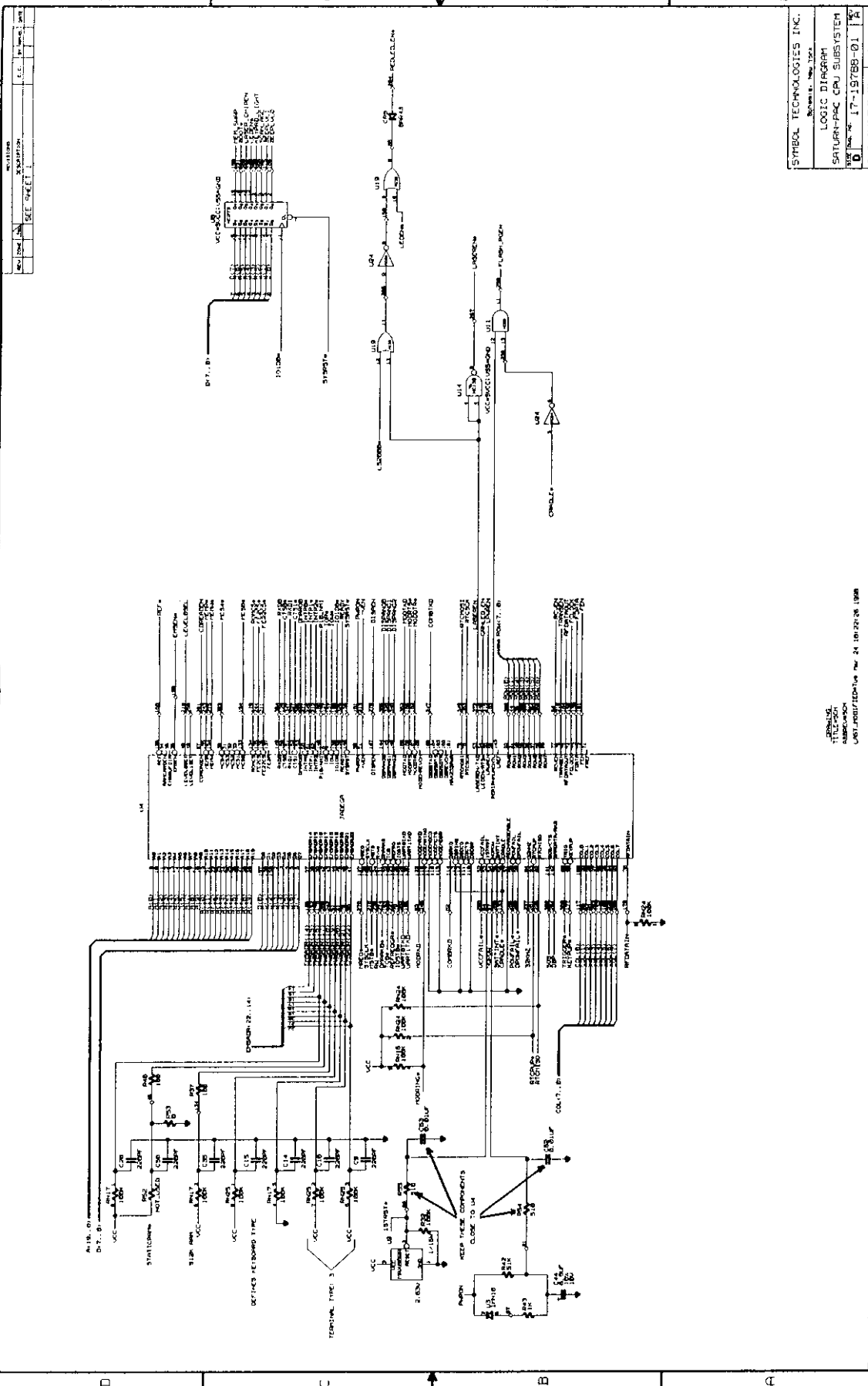
REV	DATE	BY	CHKD	APP'D
1	10/17/68	JTB	JTB	JTB
2	11/12/68	JTB	JTB	JTB
3	11/12/68	JTB	JTB	JTB
4	11/12/68	JTB	JTB	JTB
5	11/12/68	JTB	JTB	JTB
6	11/12/68	JTB	JTB	JTB
7	11/12/68	JTB	JTB	JTB
8	11/12/68	JTB	JTB	JTB

SYMBOL TECHNOLOGIES INC.
 BIRMGHAM, NEW YORK
 LOGIC DIAGRAM
 SATLAN-PAC CPU SUBSYSTEM
 DRAWING NO. 17-1978B-01
 REV. 8
 DATE: 11/12/68

- ORIGINAL FILED IN
 UNIT 1001/101/101/101/101/101/101/101

REV.	DATE	DESCRIPTION
1		SEE SHEET
2		
3		
4		
5		
6		
7		

1 2 3 4 5 6 7

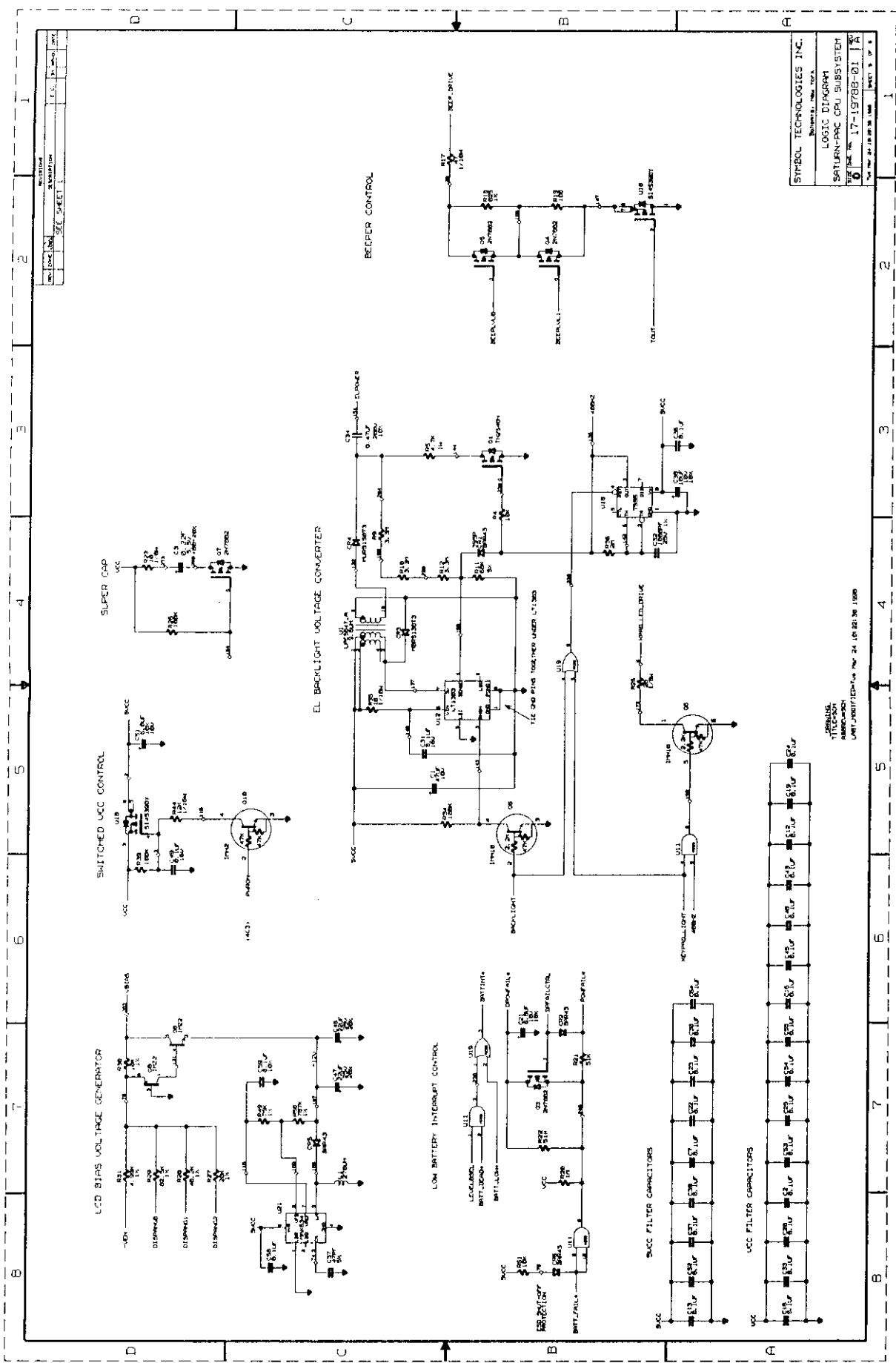


SYMBOL TECHNOLOGIES INC.
Spartanburg, S.C. 29593

LOGIC DIAGRAM
SATURN-PAC CPU SUBSYSTEM
Rev. No. 17-15788-01
Sheet 1 of 3

UNIT POSITIONED IN THE 24, 10-22-76 1088

1 2 3 4 5 6 7

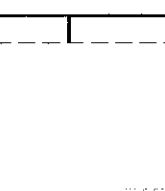
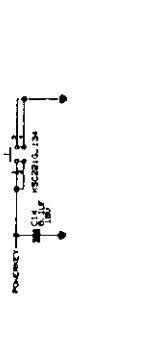
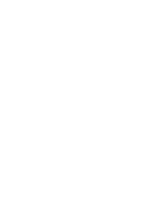
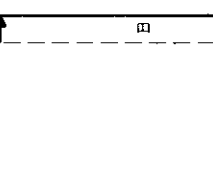
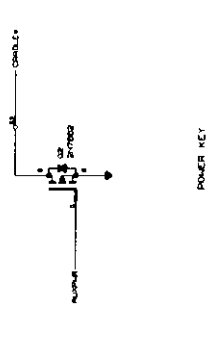
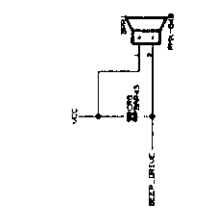
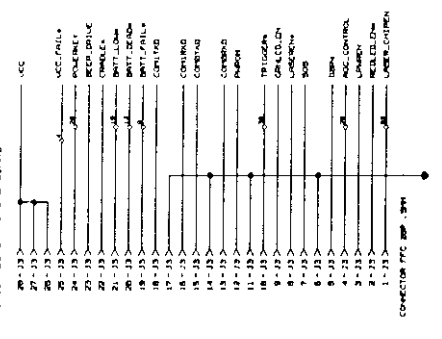
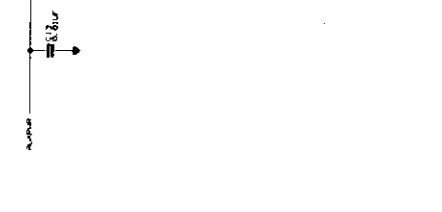
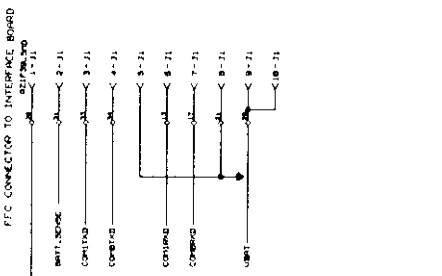


REV. NO.	DATE	BY	CHK

SYMBOL TECHNOLOGIES INC.
 BOSTON, MASS. 02114
 LOGIC DIAGRAM
 SATURN-PRC CPU SUBSYSTEM
 TITLE NO. 17-19788-01
 SHEET 5 OF 5

ISSUED
 TELEVISION
 INFORMATION
 UNIT/OPERATOR/NO. PER. 24 10 23 30 1980

REV	DATE	BY	CHKD	DESCRIPTION
1				ISSUED FOR SCANNER CABLE
2				REVISION PER E.C. #10470
3				



REV	DATE	BY	CHKD	DESCRIPTION
1				ISSUED FOR SCANNER CABLE
2				REVISION PER E.C. #10470
3				

REV	DATE	BY	CHKD	DESCRIPTION
1				ISSUED FOR SCANNER CABLE
2				REVISION PER E.C. #10470
3				

REV	DATE	BY	CHKD	DESCRIPTION
1				ISSUED FOR SCANNER CABLE
2				REVISION PER E.C. #10470
3				

REV	DATE	BY	CHKD	DESCRIPTION
1				ISSUED FOR SCANNER CABLE
2				REVISION PER E.C. #10470
3				

REV	DATE	BY	CHKD	DESCRIPTION
1				ISSUED FOR SCANNER CABLE
2				REVISION PER E.C. #10470
3				

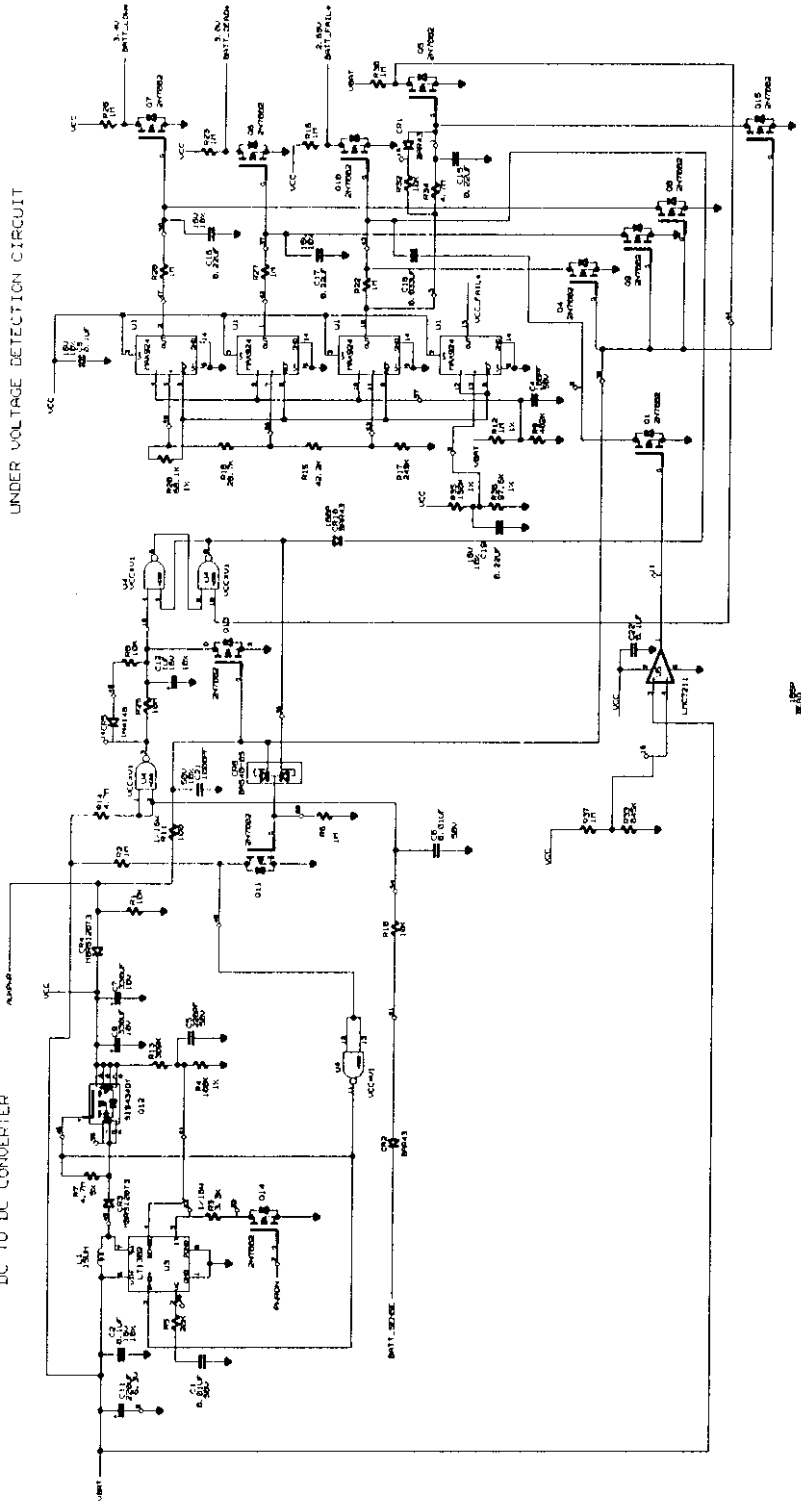
REV	DATE	BY	CHKD	DESCRIPTION
1				ISSUED FOR SCANNER CABLE
2				REVISION PER E.C. #10470
3				

REV	DATE	BY	CHKD	DESCRIPTION
1				ISSUED FOR SCANNER CABLE
2				REVISION PER E.C. #10470
3				

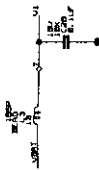
REV	DATE	BY	CHKD	DESCRIPTION
1				ISSUED FOR SCANNER CABLE
2				REVISION PER E.C. #10470
3				

SEE SHEET 1

DC TO DC CONVERTER



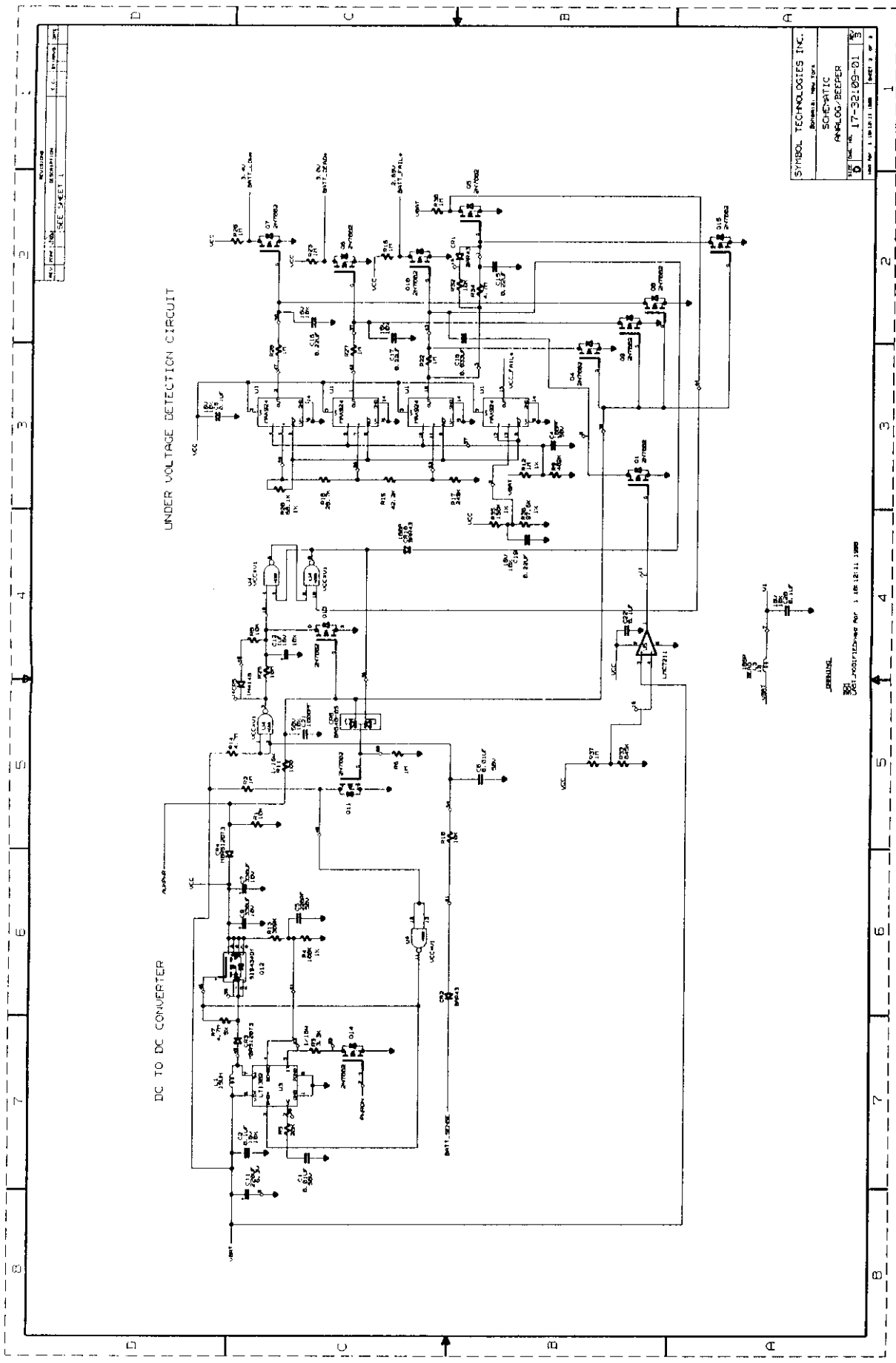
UNDER VOLTAGE DETECTION CIRCUIT

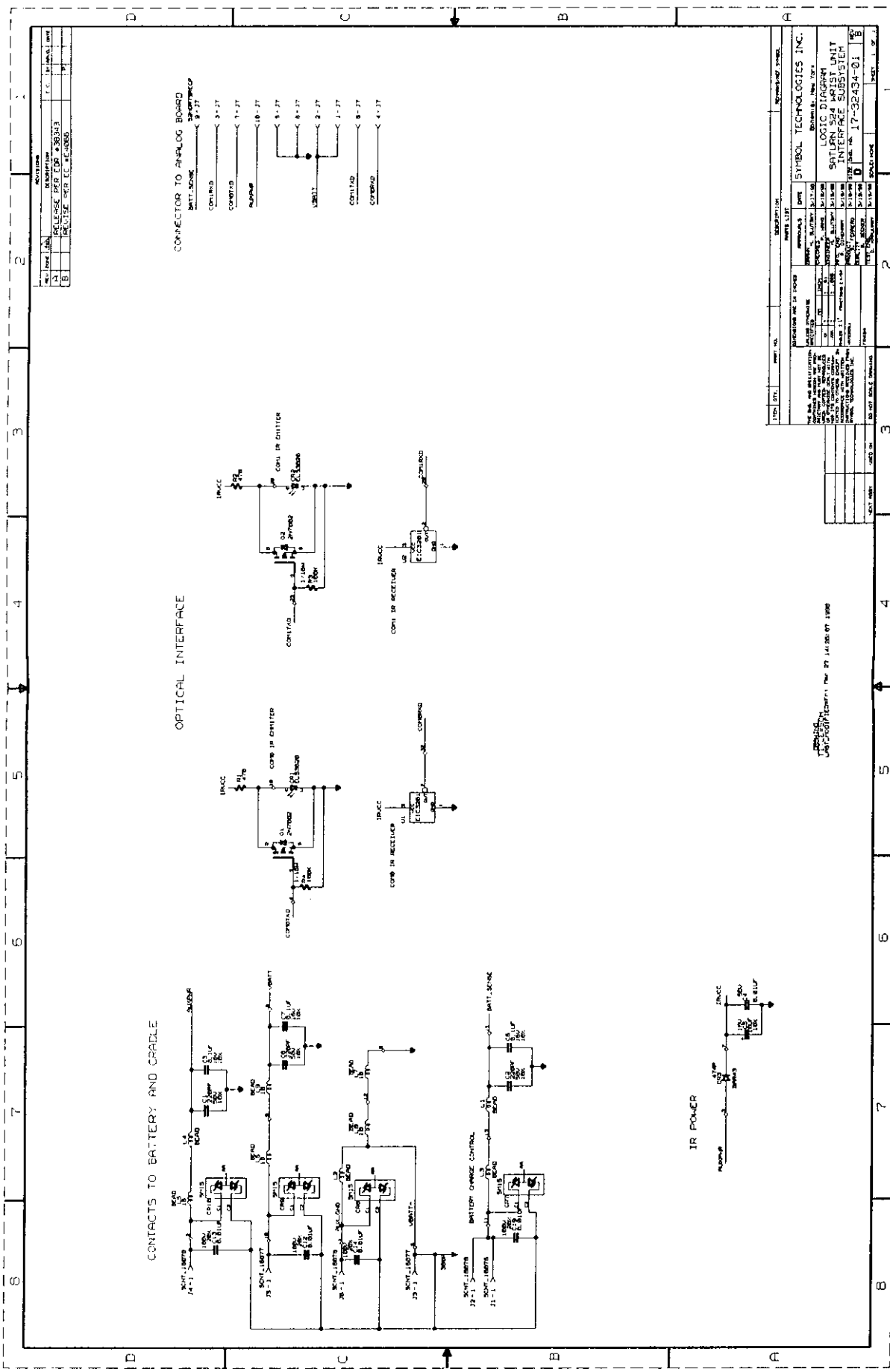


U1
VCC
B1

SYMBOL TECHNOLOGIES INC.
SHELL, NEW YORK
SOMATIC
ANALOG-BEEPER
17-32109-01
REV. 1, 10/11/88

REV. 1, 10/11/88





REV	DATE	DESCRIPTION	BY	CHKD
1	10/1/68	REFERENCE DESIG FOR 30103		
2		REVISE PER EC 4-2000		

REV	DATE	DESCRIPTION	BY	CHKD
1	10/1/68	REFERENCE DESIG FOR 30103		
2		REVISE PER EC 4-2000		

REV	DATE	DESCRIPTION	BY	CHKD
1	10/1/68	REFERENCE DESIG FOR 30103		
2		REVISE PER EC 4-2000		

REV	DATE	DESCRIPTION	BY	CHKD
1	10/1/68	REFERENCE DESIG FOR 30103		
2		REVISE PER EC 4-2000		

REV	DATE	DESCRIPTION	BY	CHKD
1	10/1/68	REFERENCE DESIG FOR 30103		
2		REVISE PER EC 4-2000		

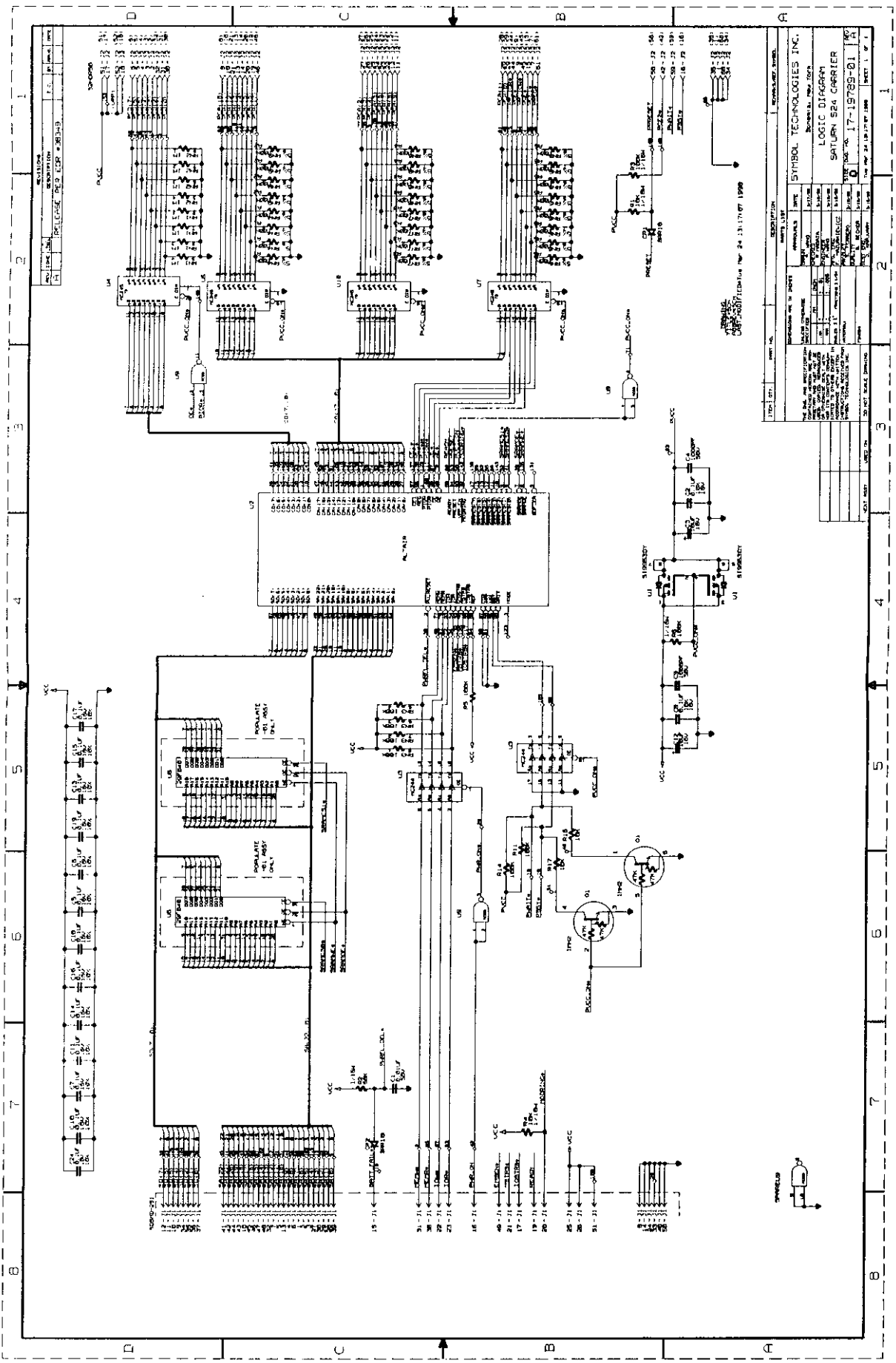
REV	DATE	DESCRIPTION	BY	CHKD
1	10/1/68	REFERENCE DESIG FOR 30103		
2		REVISE PER EC 4-2000		

REV	DATE	DESCRIPTION	BY	CHKD
1	10/1/68	REFERENCE DESIG FOR 30103		
2		REVISE PER EC 4-2000		

REV	DATE	DESCRIPTION	BY	CHKD
1	10/1/68	REFERENCE DESIG FOR 30103		
2		REVISE PER EC 4-2000		

DATE: 10/1/68
 TIME: 14:20:07 1968

SYMBOL TECHNOLOGIES INC.
 100 DUNSTON
 SATURN S2A SUBSYSTEM
 INTERFACE SUBSYSTEM
 DRAWING NO. 17-32434-01

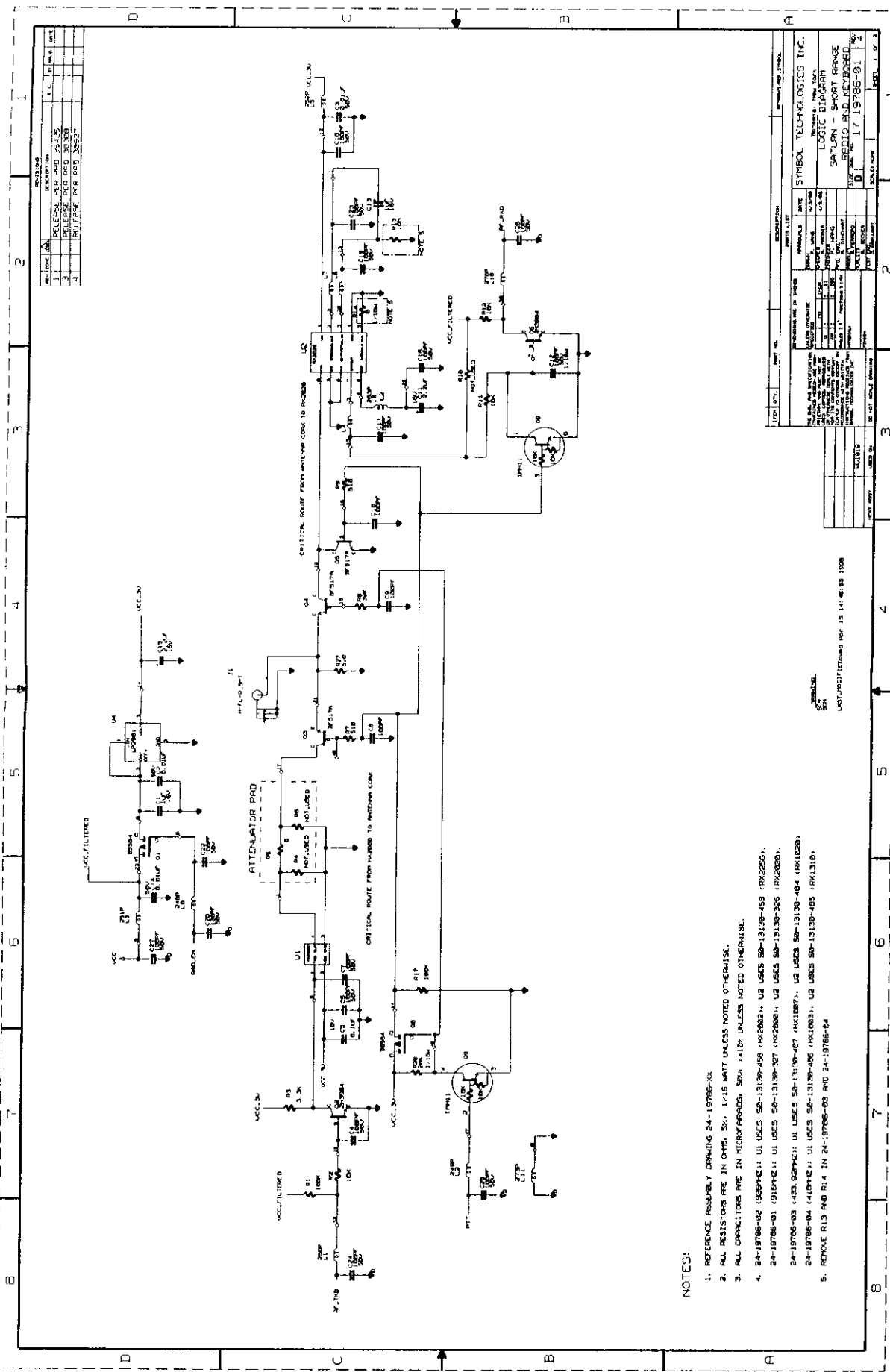


REV	DESCRIPTION	DATE	BY
1	RELEASE AND COR. WORKS	1-1-68	WJ

STEP	BY	DESCRIPTION	DATE
1	WJ	DESIGN	1-1-68
2	WJ	REVISION	1-1-68
3	WJ	REVISION	1-1-68
4	WJ	REVISION	1-1-68
5	WJ	REVISION	1-1-68
6	WJ	REVISION	1-1-68
7	WJ	REVISION	1-1-68
8	WJ	REVISION	1-1-68
9	WJ	REVISION	1-1-68
10	WJ	REVISION	1-1-68
11	WJ	REVISION	1-1-68
12	WJ	REVISION	1-1-68
13	WJ	REVISION	1-1-68
14	WJ	REVISION	1-1-68
15	WJ	REVISION	1-1-68
16	WJ	REVISION	1-1-68
17	WJ	REVISION	1-1-68
18	WJ	REVISION	1-1-68
19	WJ	REVISION	1-1-68
20	WJ	REVISION	1-1-68
21	WJ	REVISION	1-1-68
22	WJ	REVISION	1-1-68
23	WJ	REVISION	1-1-68
24	WJ	REVISION	1-1-68
25	WJ	REVISION	1-1-68
26	WJ	REVISION	1-1-68
27	WJ	REVISION	1-1-68
28	WJ	REVISION	1-1-68
29	WJ	REVISION	1-1-68
30	WJ	REVISION	1-1-68
31	WJ	REVISION	1-1-68
32	WJ	REVISION	1-1-68
33	WJ	REVISION	1-1-68
34	WJ	REVISION	1-1-68
35	WJ	REVISION	1-1-68
36	WJ	REVISION	1-1-68
37	WJ	REVISION	1-1-68
38	WJ	REVISION	1-1-68
39	WJ	REVISION	1-1-68
40	WJ	REVISION	1-1-68
41	WJ	REVISION	1-1-68
42	WJ	REVISION	1-1-68
43	WJ	REVISION	1-1-68
44	WJ	REVISION	1-1-68
45	WJ	REVISION	1-1-68
46	WJ	REVISION	1-1-68
47	WJ	REVISION	1-1-68
48	WJ	REVISION	1-1-68
49	WJ	REVISION	1-1-68
50	WJ	REVISION	1-1-68
51	WJ	REVISION	1-1-68
52	WJ	REVISION	1-1-68
53	WJ	REVISION	1-1-68
54	WJ	REVISION	1-1-68
55	WJ	REVISION	1-1-68
56	WJ	REVISION	1-1-68
57	WJ	REVISION	1-1-68
58	WJ	REVISION	1-1-68
59	WJ	REVISION	1-1-68
60	WJ	REVISION	1-1-68
61	WJ	REVISION	1-1-68
62	WJ	REVISION	1-1-68
63	WJ	REVISION	1-1-68
64	WJ	REVISION	1-1-68
65	WJ	REVISION	1-1-68
66	WJ	REVISION	1-1-68
67	WJ	REVISION	1-1-68
68	WJ	REVISION	1-1-68
69	WJ	REVISION	1-1-68
70	WJ	REVISION	1-1-68
71	WJ	REVISION	1-1-68
72	WJ	REVISION	1-1-68
73	WJ	REVISION	1-1-68
74	WJ	REVISION	1-1-68
75	WJ	REVISION	1-1-68
76	WJ	REVISION	1-1-68
77	WJ	REVISION	1-1-68
78	WJ	REVISION	1-1-68
79	WJ	REVISION	1-1-68
80	WJ	REVISION	1-1-68
81	WJ	REVISION	1-1-68
82	WJ	REVISION	1-1-68
83	WJ	REVISION	1-1-68
84	WJ	REVISION	1-1-68
85	WJ	REVISION	1-1-68
86	WJ	REVISION	1-1-68
87	WJ	REVISION	1-1-68
88	WJ	REVISION	1-1-68
89	WJ	REVISION	1-1-68
90	WJ	REVISION	1-1-68
91	WJ	REVISION	1-1-68
92	WJ	REVISION	1-1-68
93	WJ	REVISION	1-1-68
94	WJ	REVISION	1-1-68
95	WJ	REVISION	1-1-68
96	WJ	REVISION	1-1-68
97	WJ	REVISION	1-1-68
98	WJ	REVISION	1-1-68
99	WJ	REVISION	1-1-68
100	WJ	REVISION	1-1-68

SYMBOL	DESCRIPTION
U1	74180
U2	74181
U3	74182
U4	74183
U5	74180
U6	74181
U7	74182
U8	74183
U9	74180
U10	74181
U11	74182
U12	74183
U13	74180
U14	74181
U15	74182
U16	74183
U17	74180
U18	74181
U19	74182
U20	74183
U21	74180
U22	74181
U23	74182
U24	74183
U25	74180
U26	74181
U27	74182
U28	74183
U29	74180
U30	74181
U31	74182
U32	74183
U33	74180
U34	74181
U35	74182
U36	74183
U37	74180
U38	74181
U39	74182
U40	74183
U41	74180
U42	74181
U43	74182
U44	74183
U45	74180
U46	74181
U47	74182
U48	74183
U49	74180
U50	74181
U51	74182
U52	74183
U53	74180
U54	74181
U55	74182
U56	74183
U57	74180
U58	74181
U59	74182
U60	74183
U61	74180
U62	74181
U63	74182
U64	74183
U65	74180
U66	74181
U67	74182
U68	74183
U69	74180
U70	74181
U71	74182
U72	74183
U73	74180
U74	74181
U75	74182
U76	74183
U77	74180
U78	74181
U79	74182
U80	74183
U81	74180
U82	74181
U83	74182
U84	74183
U85	74180
U86	74181
U87	74182
U88	74183
U89	74180
U90	74181
U91	74182
U92	74183
U93	74180
U94	74181
U95	74182
U96	74183
U97	74180
U98	74181
U99	74182
U100	74183

SYMBOL TECHNOLOGIES INC.
 LOGIC DIAGRAM
 SATURN 524 CARRIER
 17-19793-01
 1 OF 1



REV.	DESCRIPTION	DATE	BY
1	RELEASE PER PAD 54125		
2	RELEASE PER PAD 30309		
3	RELEASE PER PAD 30309		
4	RELEASE PER PAD 30309		

NOTES:

1. REFERENCE ASSEMBLY DRAWING 24-19786-XX
2. ALL RESISTORS ARE IN OHMS, 5%, 1/4W UNLESS NOTED OTHERWISE.
3. ALL CAPACITORS ARE IN MICROFARADS, 50% \pm 10% UNLESS NOTED OTHERWISE.
4. 24-19786-02 (928742): U1 USES 50-13130-458 (R22022), U2 USES 50-13130-459 (R22025), U3 USES 50-13130-327 (R20006), U4 USES 50-13130-328 (R20006), U5 USES 50-13130-404 (R41020), U6 USES 50-13130-405 (R41020).
5. REMOVE R13 AND R14 IN 24-19786-03 AND 24-19786-04

REV.	DESCRIPTION	DATE	BY
1	RELEASE PER PAD 54125		
2	RELEASE PER PAD 30309		
3	RELEASE PER PAD 30309		
4	RELEASE PER PAD 30309		

REV.	DESCRIPTION	DATE	BY
1	RELEASE PER PAD 54125		
2	RELEASE PER PAD 30309		
3	RELEASE PER PAD 30309		
4	RELEASE PER PAD 30309		

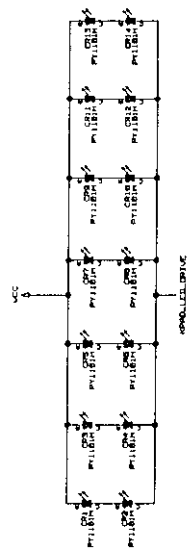
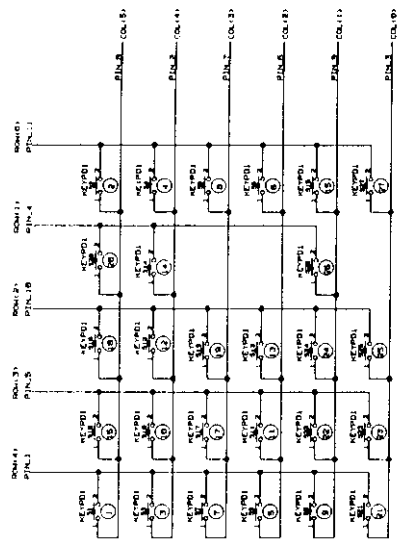
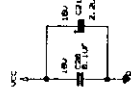
REV.	DESCRIPTION	DATE	BY
1	RELEASE PER PAD 54125		
2	RELEASE PER PAD 30309		
3	RELEASE PER PAD 30309		
4	RELEASE PER PAD 30309		

SYMBOL TECHNOLOGIES INC.
 1700 S. GARDEN AVENUE
 SUITE 100
 ANAHEIM, CALIF. 92805
 TEL: (714) 931-1000
 FAX: (714) 931-1001
 WWW: WWW.SYMBOL.COM

REV	DATE	BY	CHKD	DESCRIPTION
1				ISSUE

KEYPAD FLEX CONNECTOR

ROW 01	PIN 1	12-1
COL 01	PIN 2	12-2
ROW 02	PIN 3	12-3
COL 02	PIN 4	12-4
ROW 03	PIN 5	12-5
COL 03	PIN 6	12-6
ROW 04	PIN 7	12-7
COL 04	PIN 8	12-8
ROW 05	PIN 9	12-9
COL 05	PIN 10	12-10
ROW 06	PIN 11	12-11
COL 06	PIN 12	12-12
ROW 07	PIN 13	12-13
COL 07	PIN 14	12-14
ROW 08	PIN 15	12-15
COL 08	PIN 16	12-16
ROW 09	PIN 17	12-17
COL 09	PIN 18	12-18
ROW 10	PIN 19	12-19
COL 10	PIN 20	12-20



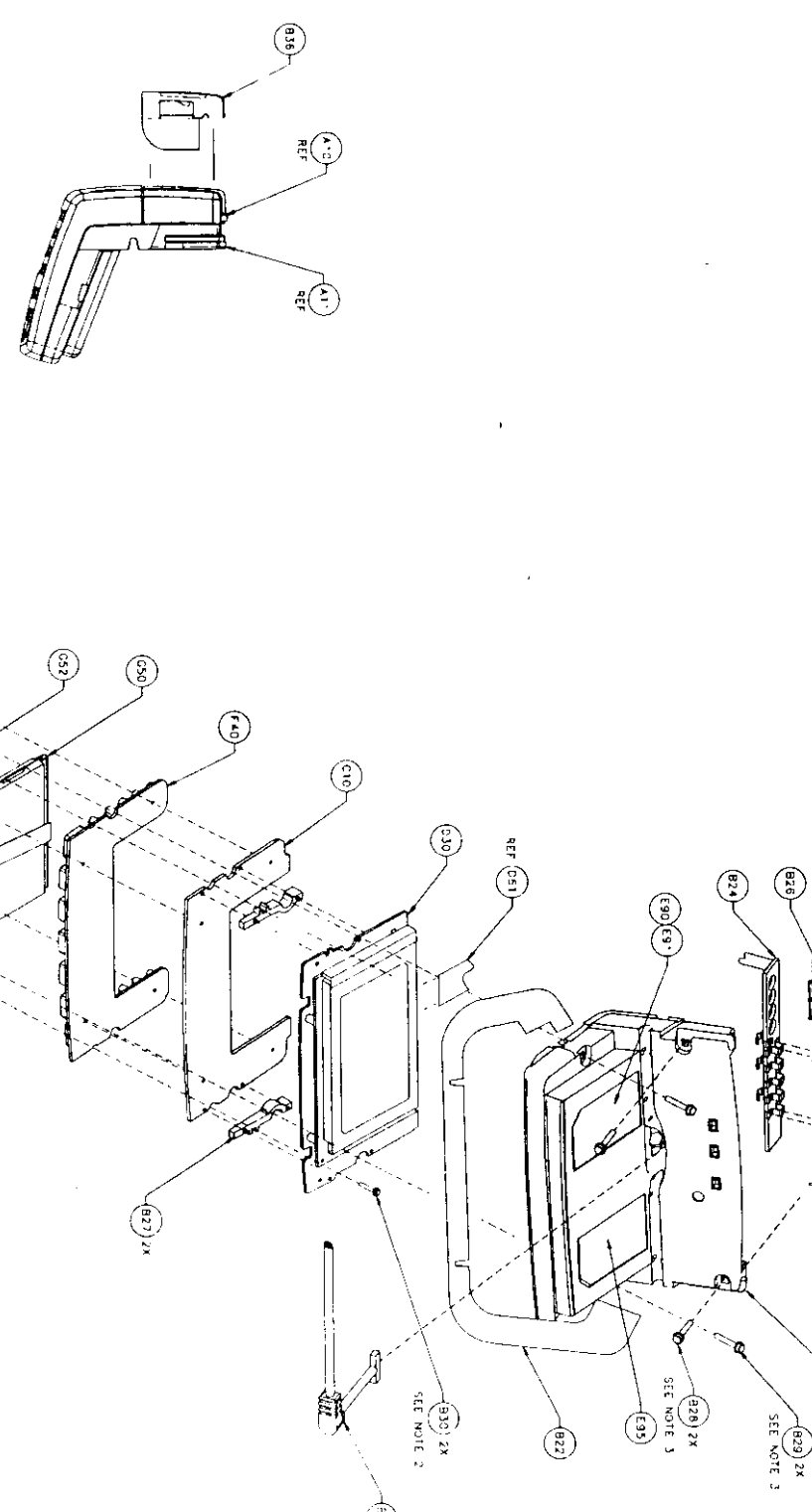
SYMBOL TECHNOLOGIES INC.
 100 WEST 17th ST
 NEW YORK, NY 10011
 212-691-1700

LOGIC DIAGRAM
 SYMBOL TECHNOLOGIES
 100 WEST 17th ST
 NEW YORK, NY 10011
 212-691-1700

1 2 3 4 5 6 7 8

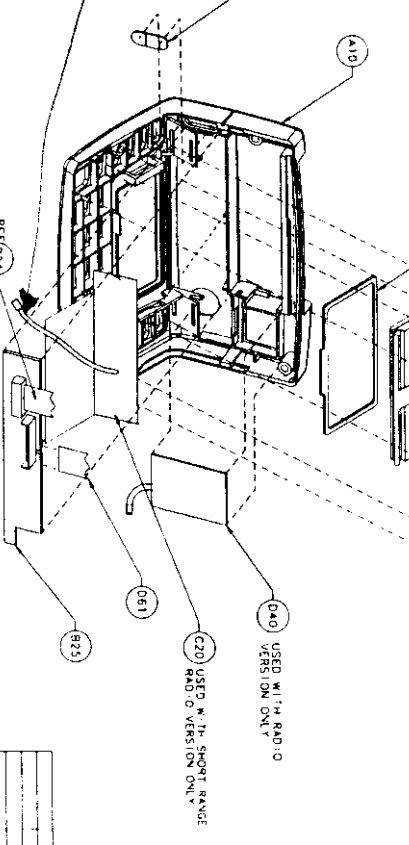
1 2 3 4 5 6 7 8

REV 1	REV 2	REV 3	REV 4	REV 5
DATE	DATE	DATE	DATE	DATE
BY	BY	BY	BY	BY
FOR	FOR	FOR	FOR	FOR
APPROVED	APPROVED	APPROVED	APPROVED	APPROVED



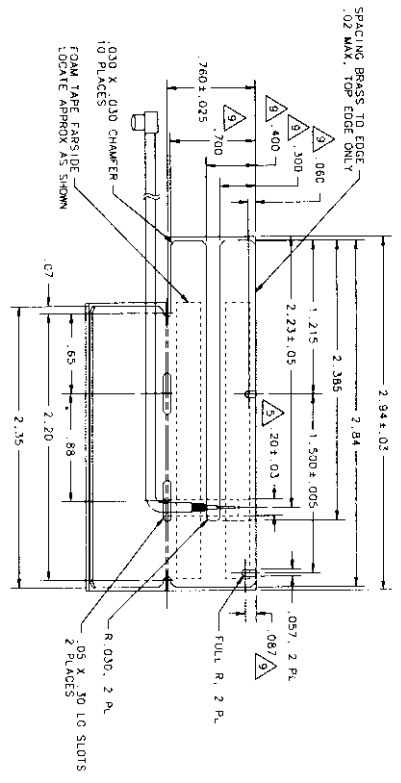
Any crack

- NOTES
- 1) FOR ITEMS PREFIXED WITH:
 - A - MSG SET PART# P/N 31-1088-XX
 - B - MSG SET PART# P/N 31-1089-XX
 - C - KEYPAD - P/N 31-1019-XX
 - D - CPU/AAIO - P/N 31-1019-XX
 - E - LABELS - P/N 31-1028-XX
 - F - BLSFLW - P/N 31-1030-XX
 - 2) TORQUE SPEC FOR T40 30 TORQUE TO .10 ±.25 IN-LBS
 - 3) TORQUE SPEC FOR T40 5 28 & 29 TORQUE TO 2.0 ±.25 N-LBS



SEE ASSOCIATED MODEL CONFIG 9-SATURUN-534-01 AND SUBSEQUENT MODEL CONFIG 10-5

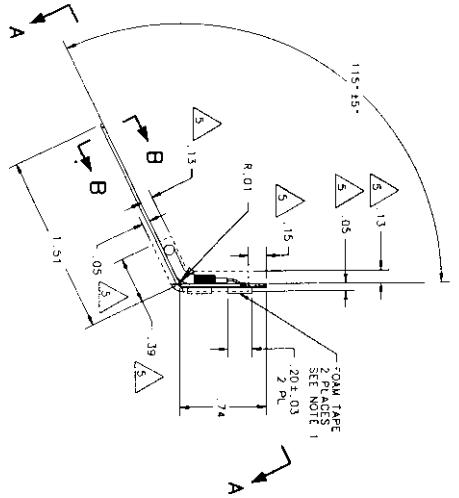
DATE	BY	FOR	APPROVED
DATE	BY	FOR	APPROVED
DATE	BY	FOR	APPROVED
DATE	BY	FOR	APPROVED



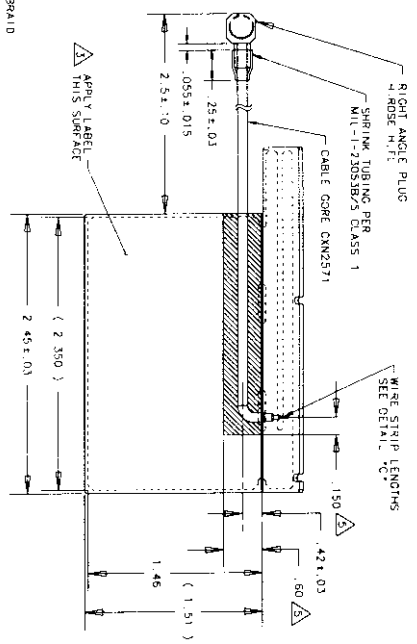
FRONT VIEW

NOTES:

1. MATERIAL SEE SECTION B-B. CORE TO BE BRASS SHEET ALLOY 260 .005 TYP. COVERLAYER TO BE .0027 TYP. POLYIMIDE. 3M #5423 PERMANENTLY LAMINATED TOGETHER. FOAM TAPE 3M #4905, 2.30 +/- .03 TYP.
2. UNLESS OTHERWISE SPECIFIED, SPACING OF BRASS TO EDGE SHALL BE .03 TO .07.
3. PERMANENTLY MARK SITI PART NUMBER, REVISION, AND DATE CODE ON LABEL APPLIED TO SURFACE INDICATED. LABEL PLACED ON ASSEMBLY INDICATED PART TESTED AND PASSED.
4. LABELING AND SHIPPING SHALL COMPLY WITH SITI SPEC 50-04100-013.
5. CABLE RETENTION FEATURES AND SOLDER TERMINATION SHALL BE WITHIN ENVELOPE INDICATED. METHOD FOR CABLE RETENTION AT DISCRETION OF SUPPLIER. CABLE PULL STRENGTH SHALL BE A MINIMUM OF 1.0 LBS FOR 15 SECONDS IN ANY DIRECTION.
6. WORKMANSHIP SHALL CONFORM TO IPC-610 REV B, SEC. 3.5 AND 4.
7. ENVIRONMENTAL REQUIREMENTS:
TEMPERATURE -40°C TO +65°C. OPERATING AND TEMPERATURE SHOCK HUMIDITY 95% NON-CONDENSING.
8. ANTENNA PERFORMANCE SPECIFICATIONS
STAND ALONE
RESONANT FREQUENCY (CH2): 1.06 ± 0.05
MINIMUM RETURN LOSS AT RESONANCE (OR): 6.0
MAXIMUM VSWR AT RESONANCE 3.0
IMPEDANCE AT DC SHORT CIRCUIT
9. INSTALLED IN SYMBOL WMC1019
OPERATING FREQUENCY (MHz): 916.50
MINIMUM BANDWIDTH (MHz): 1.0
MINIMUM PEAK GAIN (DB): 50 + 10
MAXIMUM IMPEDANCE AT 916.50 MHz (CHMS): 2.0
MAXIMUM VSWR AT 916.50 MHz (DB): 6.5
MINIMUM RETURN LOSS AT 916.50 MHz (DB): 5.0
IMPEDANCE AT DC SHORT CIRCUIT



DETAIL C
(FOR REFERENCE ONLY)



SECTION B-B
(ROTATED 25° CLOCKWISE)

VIEW A-A
(ROTATED 65° CW)

REV	DATE	BY	CHKD	DESCRIPTION
1				INITIALS
2				SYMBOL TECHNOLOGIES INC.
3				ENGINEER
4				ANTENNA SHORT RANGE
5				916.5 MHz
6				21-31538-01
7				REV 1 OF 1