



Re:FCC ID:H9PWSAP5030

Applicant: Symbol Technologies Inc  
Correspondence Reference Number: 10077  
731 Confirmation Number: TC459537  
Date of Original Email: 11/10/2003

Question:-

Item 4) Filing does not include sufficient user manual, external photo, and/or test setup photos to determine how 2.4ghz card module relates to AP case with 4 antennas, and how card is installed and used. Please clarify.

Response:-

The photograph in test report OR610776 page 165 shows both "rubber duck" antenna installed for WSAP5030

The photograph in test report OR610776 page 169 shows UNII internal antenna installed.

The photograph in test report OR610776 page 170 shows both "rubber duck" antenna the pair on the right are the 2.4GHz antenna.

The following photographs show how the 2.4GHZ module relates to the AP case with 4 antennas.



**Photo 1; WSAP5030 External Antenna connections**



Photo 2; WSAP5030 External Antenna connections 2.4GHz module un-iinstalled



**Photo 3; WSM5030 2.4GHz Integral Antenna Outside Case Rear**



**Photo 4: WSM5030 2.4GHz Integral Antenna Outside Case Rear Showing Connection to WSAP5030**

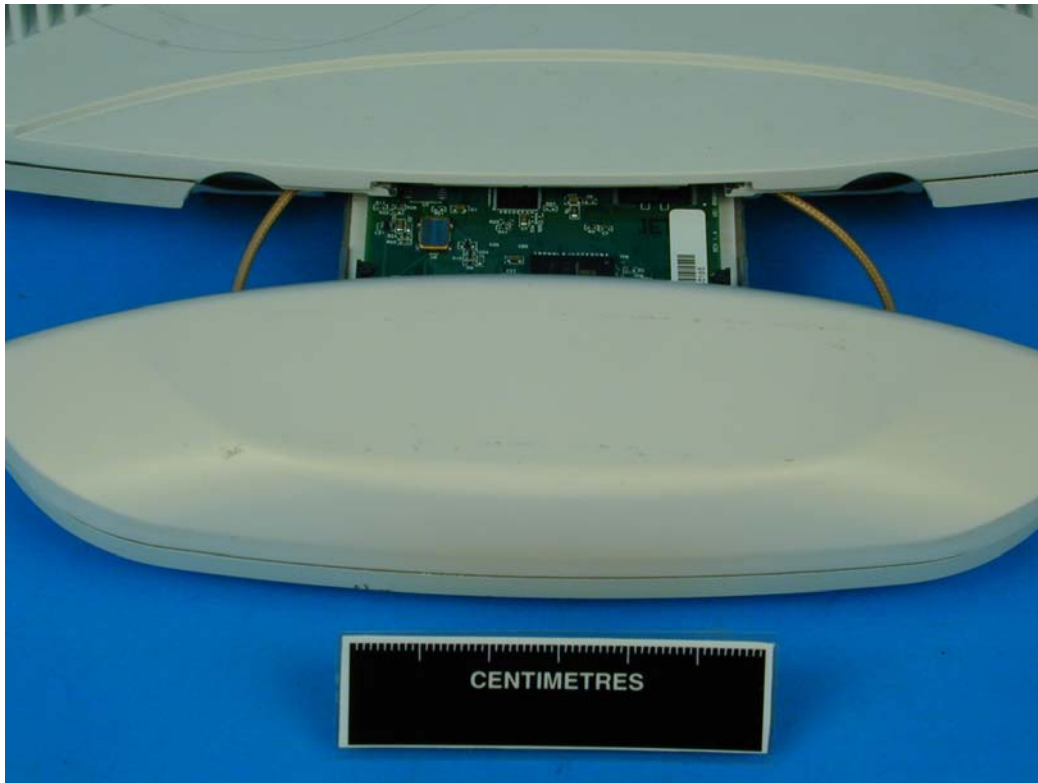
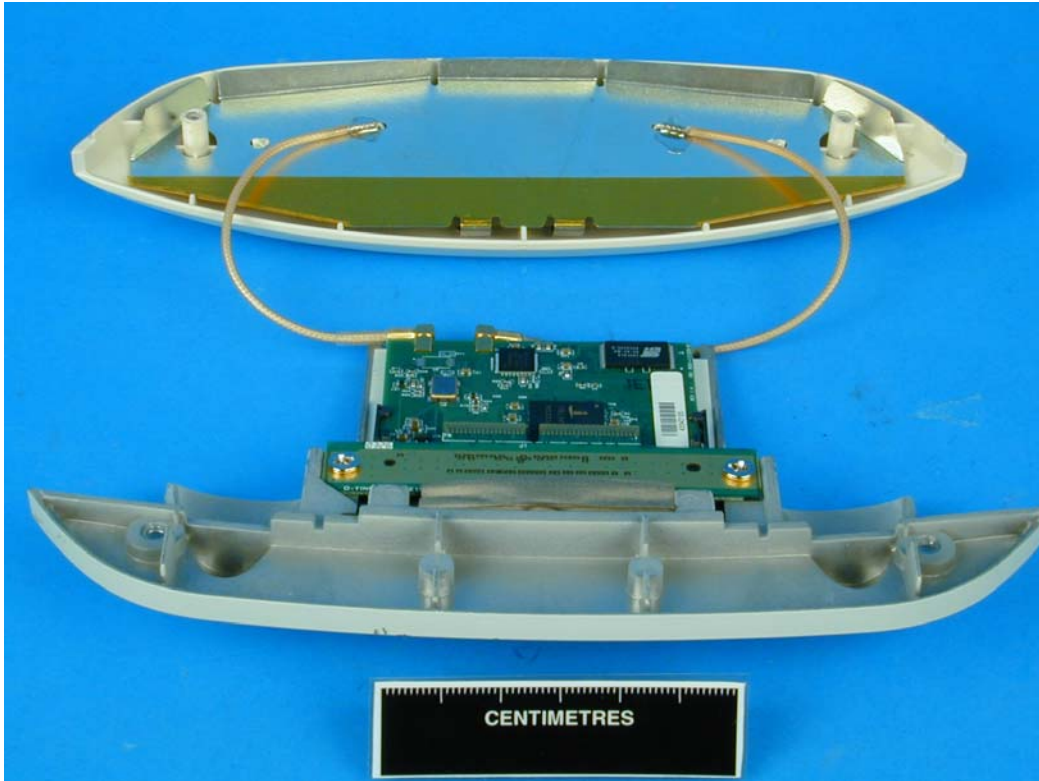


Photo 5; WSM5030 2.4GHz Integral Antenna Outside Case Front Showing Connection to WSAP5030



**Photo 6: Internal of Integral Antenna**