

# SYMBOL FCC ID:H9PSPT1842 -- 2.4GHz Body SAR

Generic Twin Phantom; Flat Section; Probe: ET3DV6 - SN1560 -- Probe Cal Date 20/02/01

Med. Parameters 2450 MHz Muscle:  $\sigma = 2.85$  mho/m  $\epsilon_r = 52.2$   $\rho = 1.00$  g/cm<sup>3</sup>; Antenna Position -- Out; Crest Factor 1.0

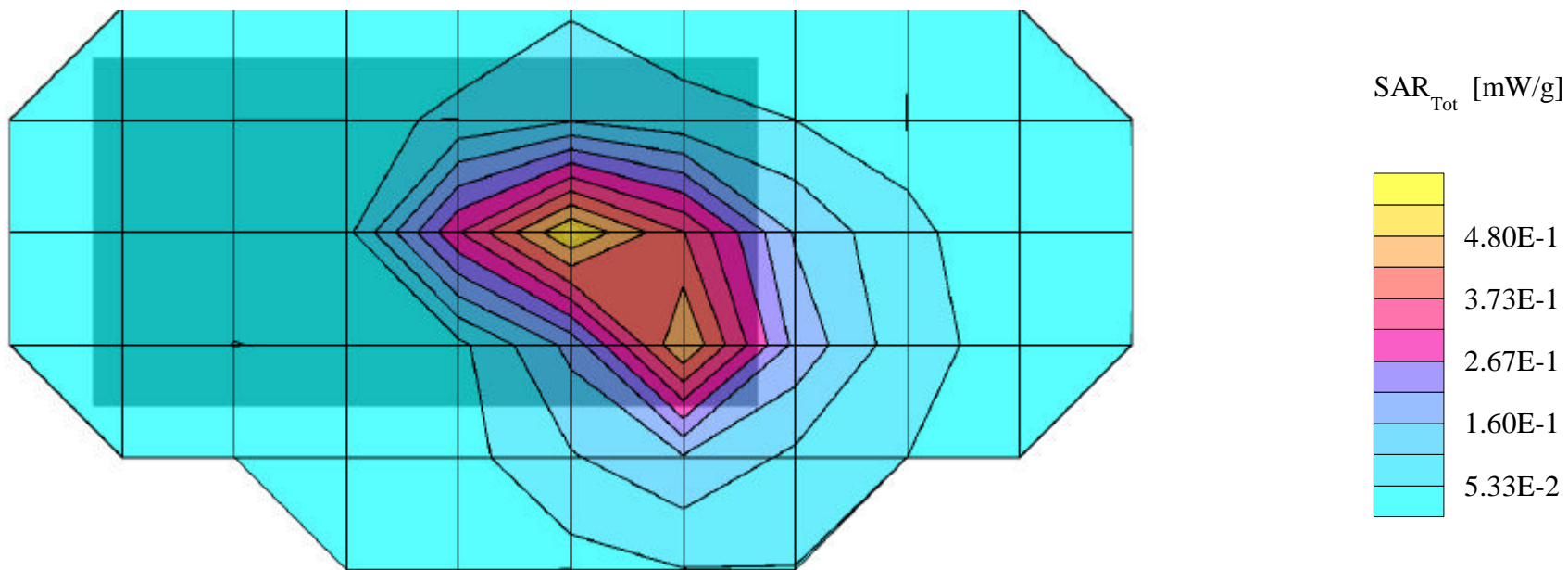
**SAR (1g): 0.943 mW/g, SAR (10g): 0.382 mW/g**

SYMBOL Pen Terminal w/Integrated FHSS PCMCIA card (FCC ID:H9PLA3021-500)

Model: SPT1842; CW (Continuous Transmit) Mode, Low Channel [2402MHz]

Radiated Power = 331mW; Spacing = 2.0cm from flat phantom to rear panel of EUT, w/Holster

Test Date -- 06/08/2001



# SYMBOL FCC ID:H9PSPT1842 -- 2.4GHz Body SAR

Generic Twin Phantom; Flat Section; Probe: ET3DV6 - SN1560 -- Probe Cal Date 20/02/01

Med. Parameters 2450 MHz Muscle:  $\sigma = 2.85$  mho/m  $\epsilon_r = 52.2$   $\rho = 1.00$  g/cm<sup>3</sup>; Antenna Position -- Out; Crest Factor 1.0

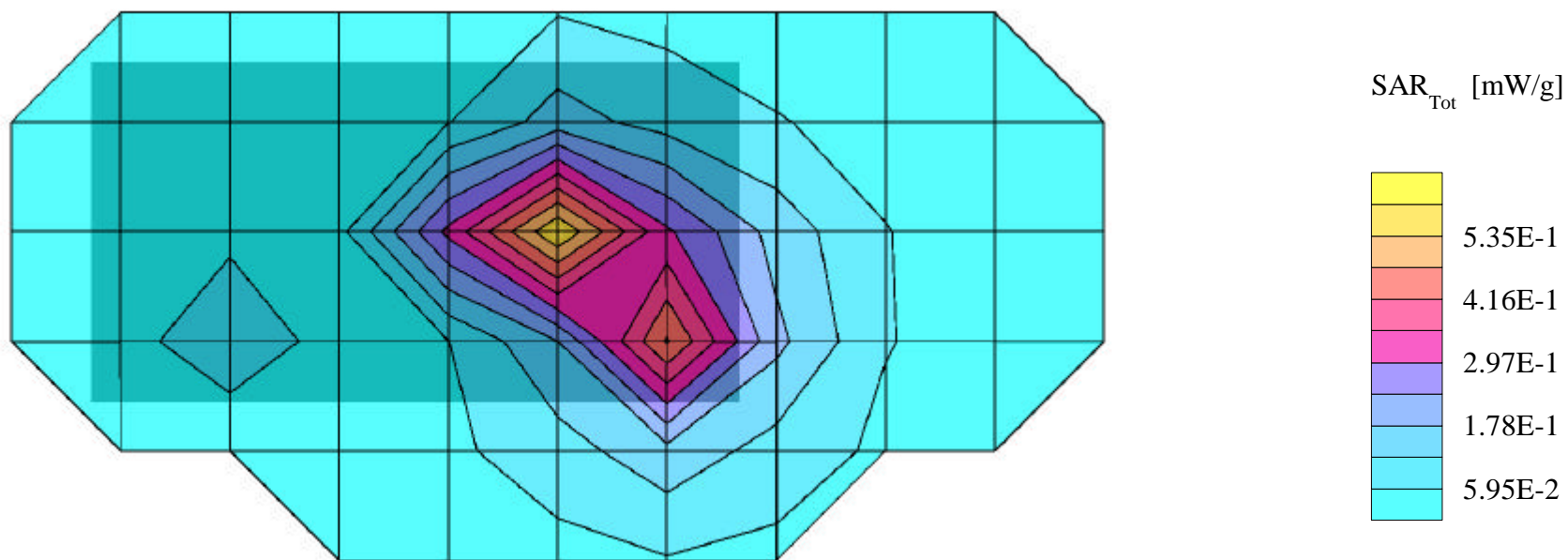
**SAR (1g): 0.904 mW/g**, SAR (10g): 0.390 mW/g

SYMBOL Pen Terminal w/Integrated FHSS PCMCIA card (FCC ID:H9PLA3021-500)

Model: SPT1842; CW (Continuous Transmit) Mode, Mid Channel [2441MHz]

Radiated Power = 309mW; Spacing = 2.0cm from flat phantom to rear panel of EUT, w/Holster

Test Date -- 06/08/2001



# SYMBOL FCC ID:H9PSPT1842 -- 2.4GHz Body SAR

Generic Twin Phantom; Flat Section; Probe: ET3DV6 - SN1560 -- Probe Cal Date 20/02/01

Med. Parameters 2450 MHz Muscle:  $\sigma = 2.85$  mho/m  $\epsilon_r = 52.2$   $\rho = 1.00$  g/cm<sup>3</sup>; Antenna Position -- Out; Crest Factor 1.0

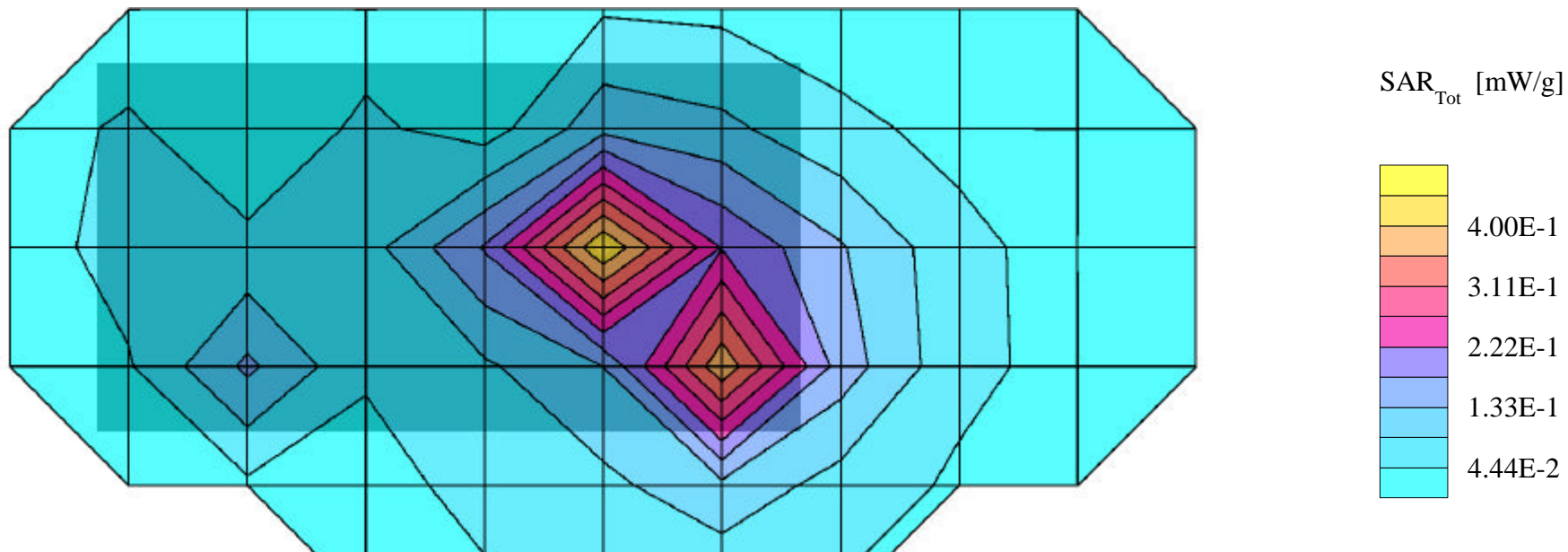
**SAR (1g): 0.685 mW/g, SAR (10g): 0.306 mW/g**

SYMBOL Pen Terminal w/Integrated FHSS PCMCIA card (FCC ID:H9PLA3021-500)

Model: SPT1842; CW (Continuous Transmit) Mode, High Channel [2480MHz]

Radiated Power = 281mW; Spacing = 2.0cm from flat phantom to rear panel of EUT, w/Holster

Test Date -- 06/08/2001



# SYMBOL FCC ID:H9PSPT1842 -- 2.4GHz Back-Side Hand SAR

Generic Twin Phantom; Flat Section; Probe: ET3DV6 - SN1560 -- Probe Cal Date 20/02/01

Med. Parameters 2450 MHz Muscle:  $\sigma = 2.85$  mho/m  $\epsilon_r = 52.2$   $\rho = 1.00$  g/cm<sup>3</sup>; Antenna Position -- Out; Crest Factor 1.0

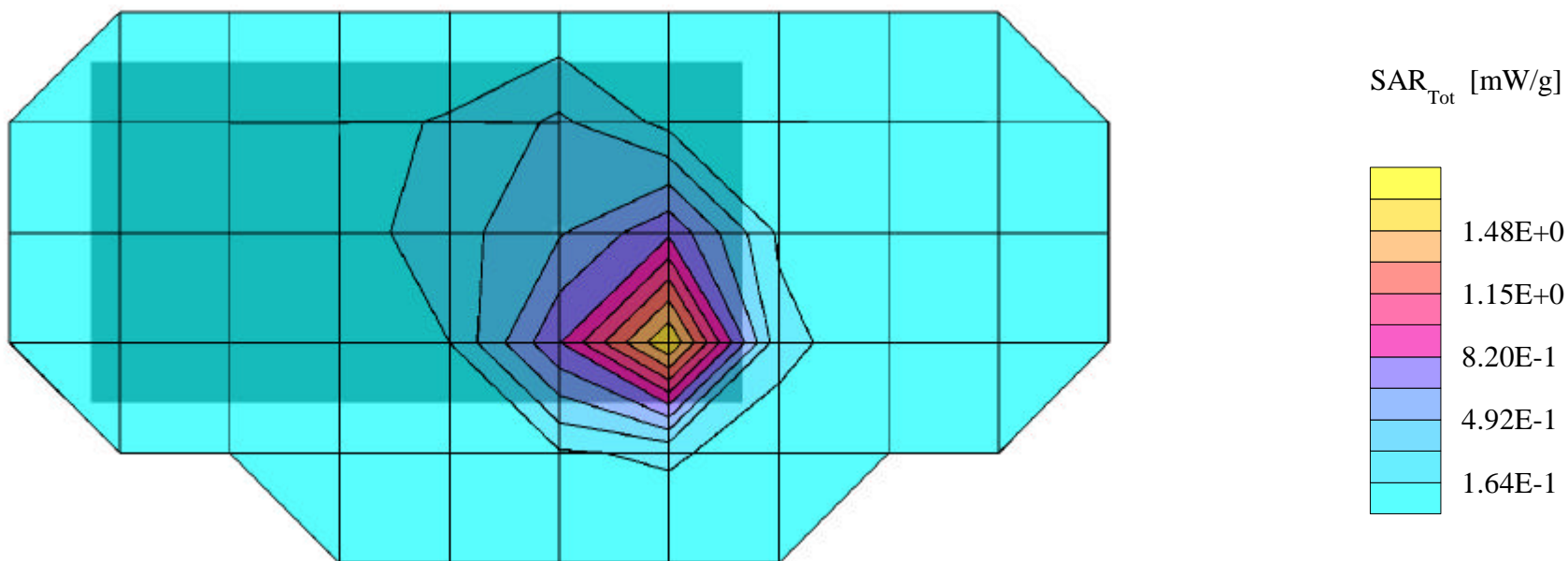
SAR (1g): 3.27 mW/g, **SAR (10g): 1.41 mW/g**

SYMBOL Pen Terminal w/Integrated FHSS PCMCIA card (FCC ID:H9PLA3021-500)

Model: SPT1842; CW (Continuous Transmit) Mode, Low Channel [2402MHz]

Radiated Power = 331mW; Spacing = back of EUT (internal antenna side) touching flat phantom

Test Date -- 06/07/2001



# SYMBOL FCC ID:H9PSPT1842 -- 2.4GHz Back-Side Hand SAR

Generic Twin Phantom; Flat Section; Probe: ET3DV6 - SN1560 -- Probe Cal Date 20/02/01

Med. Parameters 2450 MHz Muscle:  $\sigma = 2.85$  mho/m  $\epsilon_r = 52.2$   $\rho = 1.00$  g/cm<sup>3</sup>; Antenna Position -- Out; Crest Factor 1.0

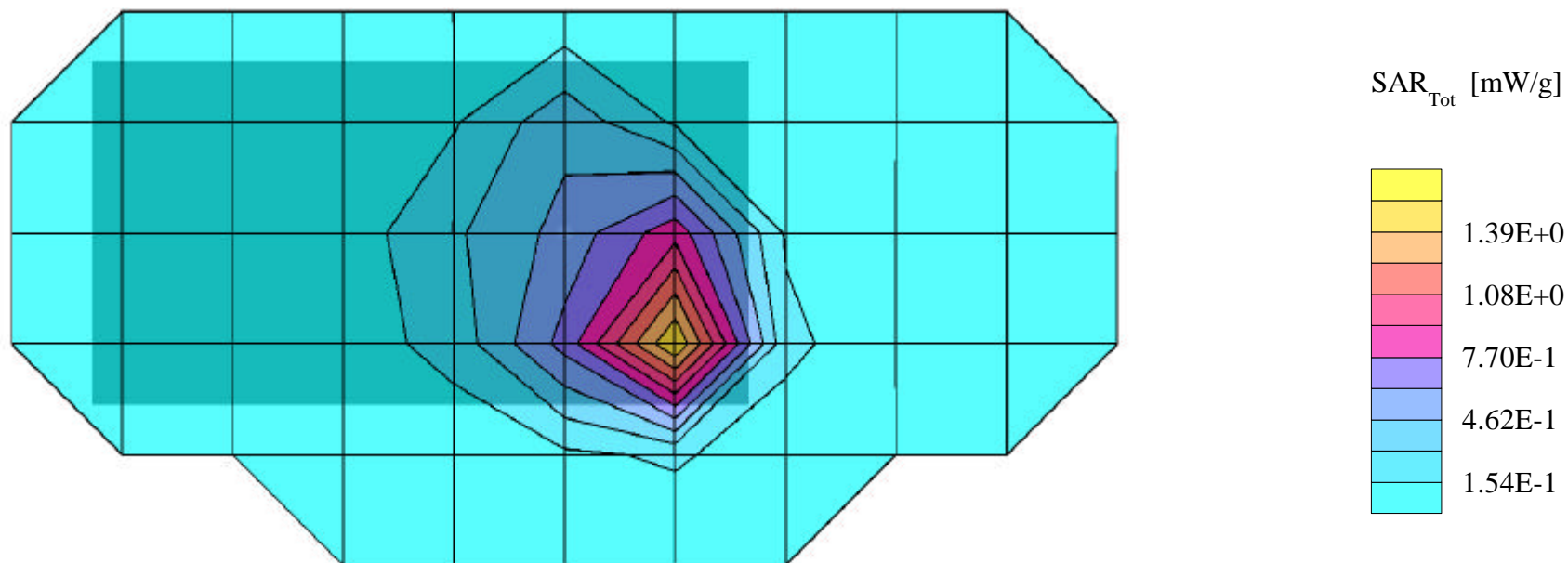
SAR (1g): 3.31 mW/g, **SAR (10g): 1.39 mW/g**

SYMBOL Pen Terminal w/Integrated FHSS PCMCIA card (FCC ID:H9PLA3021-500)

Model: SPT1842; CW (Continuous Transmit) Mode, Mid Channel [2441MHz]

Radiated Power = 309mW; Spacing = back of EUT (internal antenna side) touching flat phantom

Test Date -- 06/07/2001



# SYMBOL FCC ID:H9PSPT1842 -- 2.4GHz Back-Side Hand SAR

Generic Twin Phantom; Flat Section; Probe: ET3DV6 - SN1560 -- Probe Cal Date 20/02/01

Med. Parameters 2450 MHz Muscle:  $\sigma = 2.85$  mho/m  $\epsilon_r = 52.2$   $\rho = 1.00$  g/cm<sup>3</sup>; Antenna Position -- Out; Crest Factor 1.0

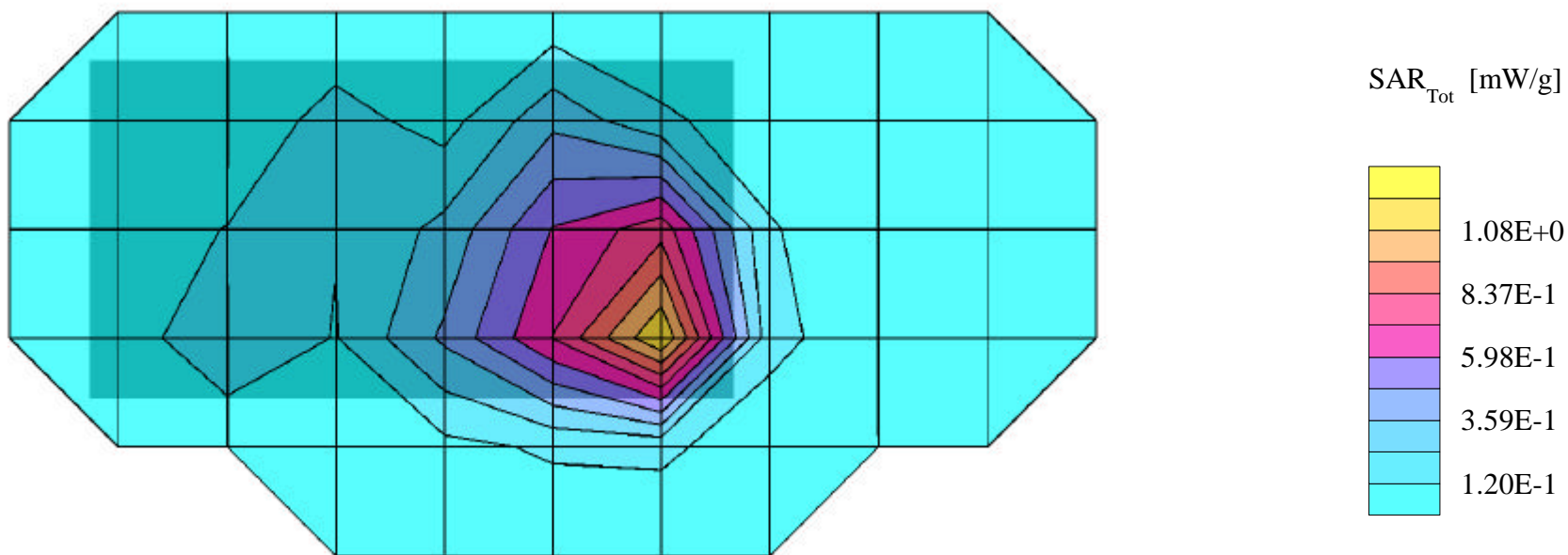
SAR (1g): 2.76 mW/g, **SAR (10g): 1.17 mW/g**

SYMBOL Pen Terminal w/Integrated FHSS PCMCIA card (FCC ID:H9PLA3021-500)

Model: SPT1842; CW (Continuous Transmit) Mode, High Channel [2480MHz]

Radiated Power = 281mW; Spacing = back of EUT (internal antenna side) touching flat phantom

Test Date -- 06/07/2001



# SYMBOL FCC ID:H9PSPT1842 -- 2.4GHz Front-Side Hand SAR

Generic Twin Phantom; Flat Section; Probe: ET3DV6 - SN1560 -- Probe Cal Date 20/02/01

Med. Parameters 2450 MHz Muscle:  $\sigma = 2.85$  mho/m  $\epsilon_r = 52.2$   $\rho = 1.00$  g/cm<sup>3</sup>; Antenna Position -- Out; Crest Factor 1.0

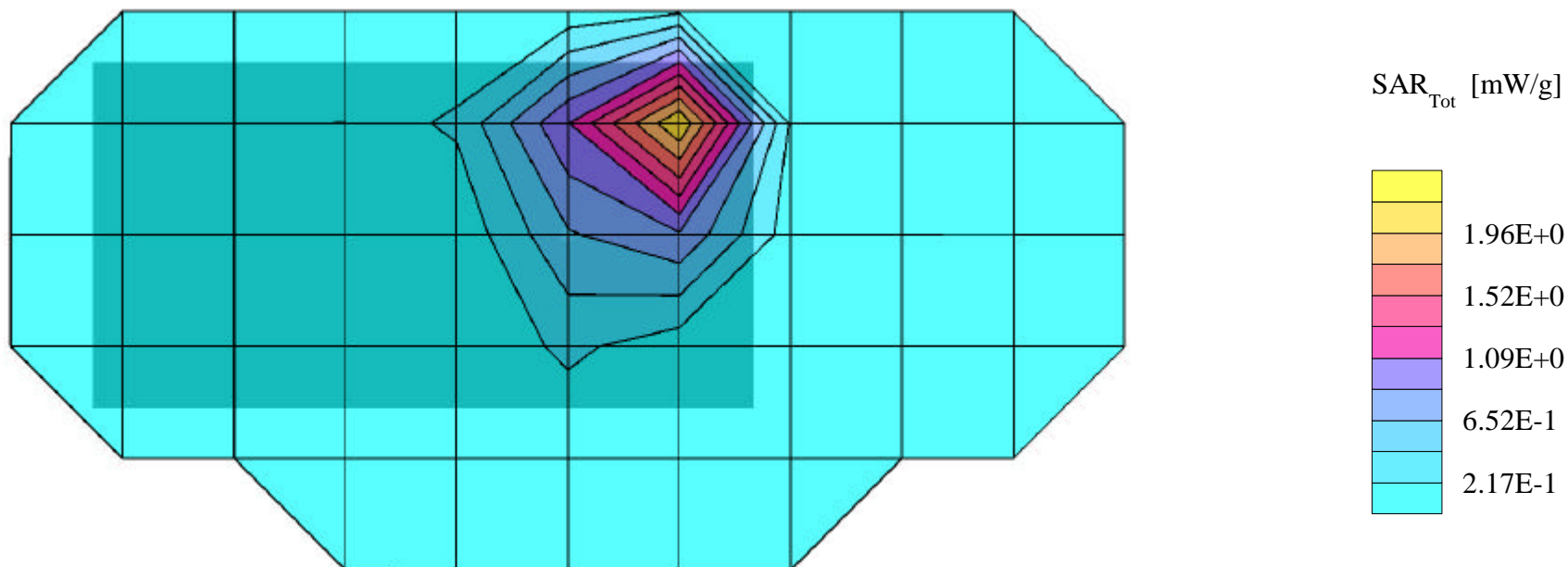
SAR (1g): 3.87 mW/g, **SAR (10g): 1.63 mW/g**

SYMBOL Pen Terminal w/Integrated FHSS PCMCIA card (FCC ID:H9PLA3021-500)

Model: SPT1842; CW (Continuous Transmit) Mode, Low Channel [2402MHz]

Radiated Power = 331mW; Spacing = front of EUT (internal antenna flip-side) touching flat phantom

Test Date -- 06/07/2001



# SYMBOL FCC ID:H9PSPT1842 -- 2.4GHz Front-Side Hand SAR

Generic Twin Phantom; Flat Section; Probe: ET3DV6 - SN1560 -- Probe Cal Date 20/02/01

Med. Parameters 2450 MHz Muscle:  $\sigma = 2.85$  mho/m  $\epsilon_r = 52.2$   $\rho = 1.00$  g/cm<sup>3</sup>; Antenna Position -- Out; Crest Factor 1.0

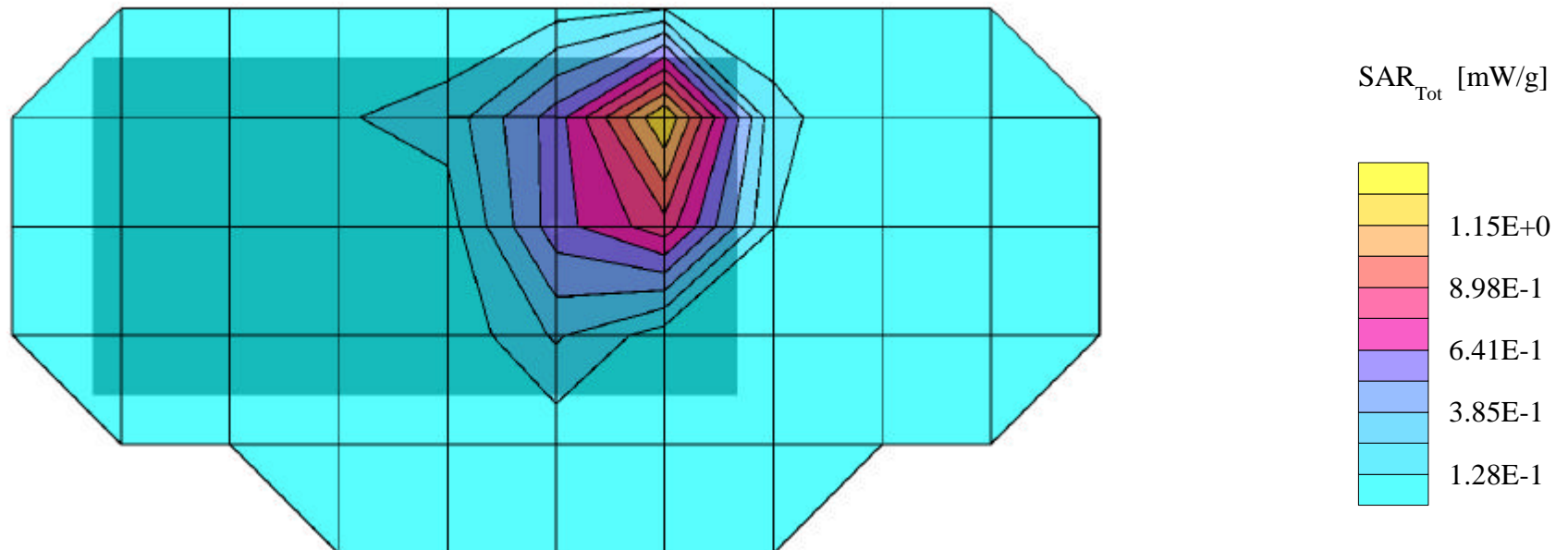
SAR (1g): 2.42 mW/g, **SAR (10g): 1.10 mW/g**

SYMBOL Pen Terminal w/Integrated FHSS PCMCIA card (FCC ID:H9PLA3021-500)

Model: SPT1842; CW (Continuous Transmit) Mode, Mid Channel [2441MHz]

Radiated Power = 309mW; Spacing = front of EUT (internal antenna flip-side) touching flat phantom

Test Date -- 06/07/2001





# SYMBOL FCC ID:H9PSPT1842 -- 2.4GHz Front-Side Hand SAR

Generic Twin Phantom; Flat Section; Probe: ET3DV6 - SN1560 -- Probe Cal Date 20/02/01

Med. Parameters 2450 MHz Muscle:  $\sigma = 2.85$  mho/m  $\epsilon_r = 52.2$   $\rho = 1.00$  g/cm<sup>3</sup>; Antenna Position -- Out; Crest Factor 1.0

SAR (1g): 1.82 mW/g, **SAR (10g): 0.818 mW/g**

SYMBOL Pen Terminal w/Integrated FHSS PCMCIA card (FCC ID:H9PLA3021-500)

Model: SPT1842; CW (Continuous Transmit) Mode, High Channel [2480MHz]

Radiated Power = 281mW; Spacing = front of EUT (internal antenna flip-side) touching flat phantom

Test Date -- 06/07/2001

