

SYMBOL FCC ID:H9PSPT1833 -- FM [CDPD] Body SAR

Generic Twin Phantom; Flat Section; Probe: ET3DV6 - SN1560 -- Probe Cal Date 20/02/01

Med. Parameters 835 MHz Muscle: $\sigma = 0.97$ mho/m $\epsilon_r = 55.2$ $\rho = 1.00$ g/cm³; Antenna Position -- Out; Crest Factor 1.0

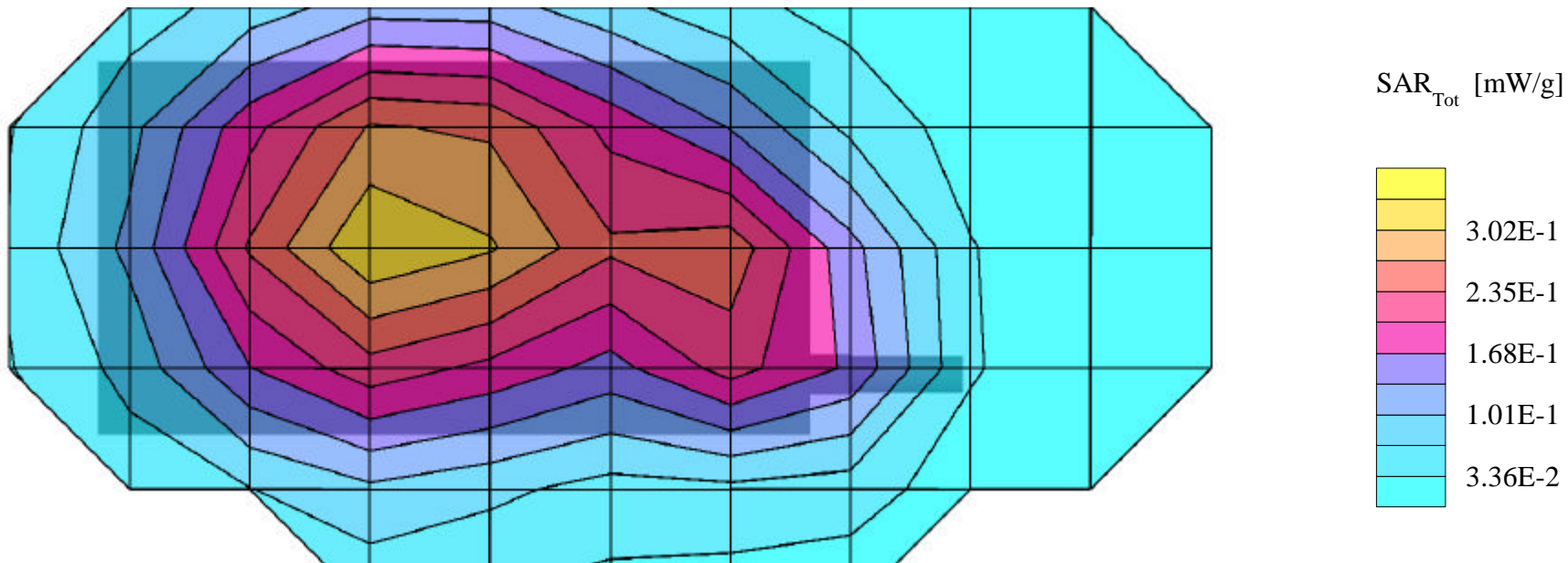
SAR (1g): 0.341 mW/g, SAR (10g): 0.251 mW/g

SYMBOL PDA WAN Terminal w/Integrated CDPD Radio Modem; Model: SPT1833

FM Mode, Ch.0991 [824.04MHz]

Conducted Power = 26.8dBm; Spacing = 2.5cm from back of PDA to flat phantom, w/Holster

Test Date -- 08/08/2001



SYMBOL FCC ID:H9PSPT1833 -- FM [CDPD] Body SAR

Generic Twin Phantom; Flat Section; Probe: ET3DV6 - SN1560 -- Probe Cal Date 20/02/01

Med. Parameters 835 MHz Muscle: $\sigma = 0.97$ mho/m $\epsilon_r = 55.2$ $\rho = 1.00$ g/cm³; Antenna Position -- Out; Crest Factor 1.0

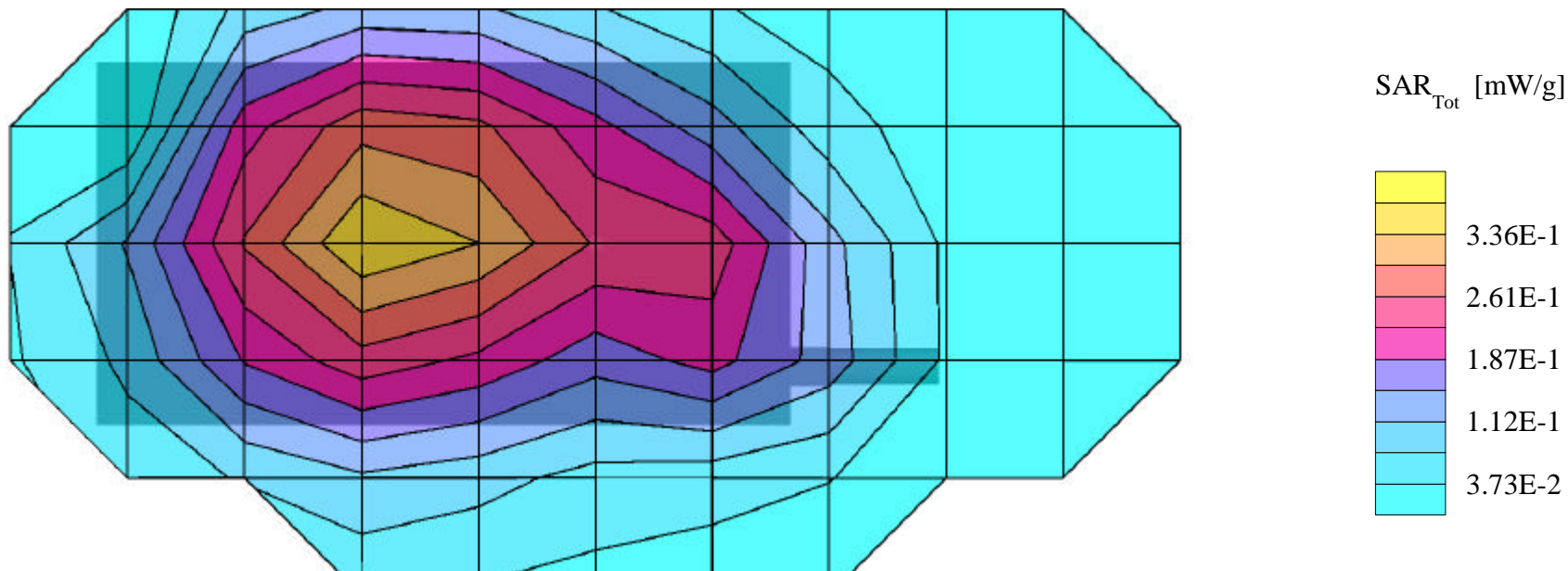
SAR (1g): 0.370 mW/g, SAR (10g): 0.273 mW/g

SYMBOL PDA WAN Terminal w/Integrated CDPD Radio Modem; Model: SPT1833

FM Mode, Ch.0383 [836.49MHz]

Conducted Power = 26.8dBm; Spacing = 2.5cm from back of PDA to flat phantom, w/Holster

Test Date -- 08/08/2001



SYMBOL FCC ID:H9PSPT1833 -- FM [CDPD] Body SAR

Generic Twin Phantom; Flat Section; Probe: ET3DV6 - SN1560 -- Probe Cal Date 20/02/01

Med. Parameters 835 MHz Muscle: $\sigma = 0.97$ mho/m $\epsilon_r = 55.2$ $\rho = 1.00$ g/cm³; Antenna Position -- Out; Crest Factor 1.0

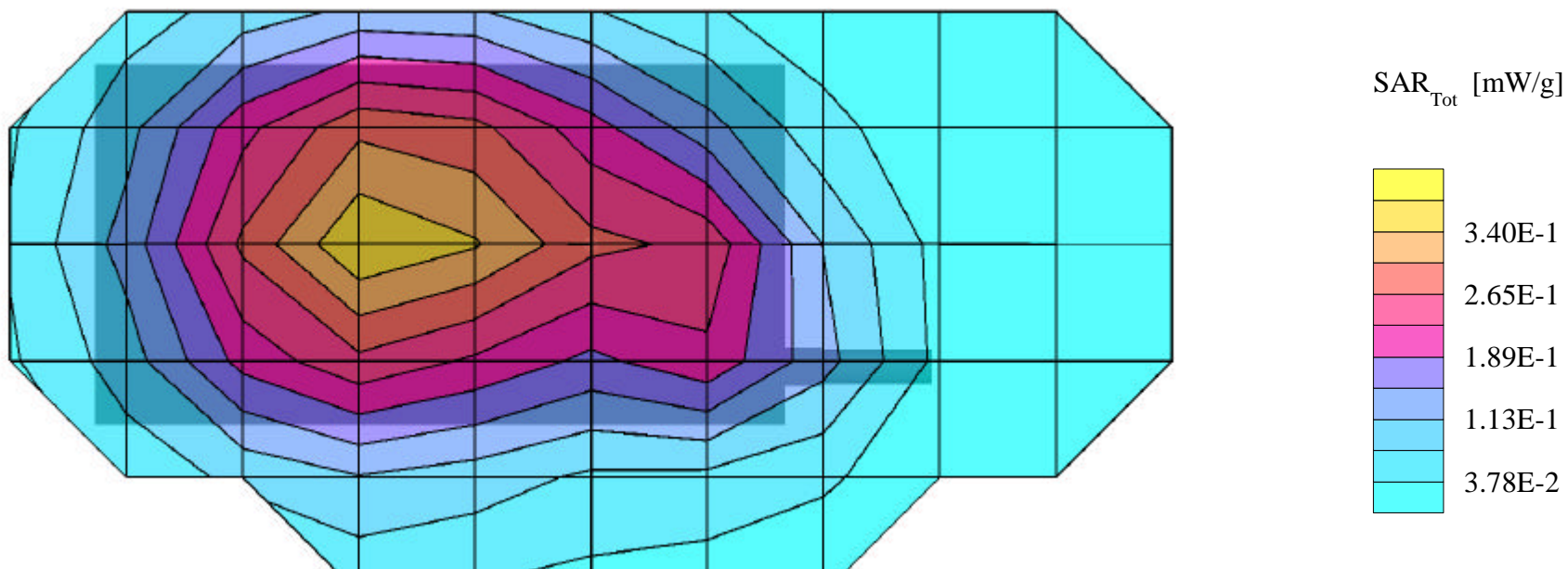
SAR (1g): 0.407 mW/g, SAR (10g): 0.280 mW/g

SYMBOL PDA WAN Terminal w/Integrated CDPD Radio Modem; Model: SPT1833

FM Mode, Ch.0799 [848.97MHz]

Conducted Power = 26.8dBm; Spacing = 2.5cm from back of PDA to flat phantom, w/Holster

Test Date -- 08/08/2001



SYMBOL FCC ID:H9PSPT1833 -- FM [CDPD] Hand SAR

Generic Twin Phantom; Flat Section; Probe: ET3DV6 - SN1560 -- Probe Cal Date 20/02/01

Med. Parameters 835 MHz Muscle: $\sigma = 0.97$ mho/m $\epsilon_r = 55.2$ $\rho = 1.00$ g/cm³; Antenna Position -- Out; Crest Factor 1.0

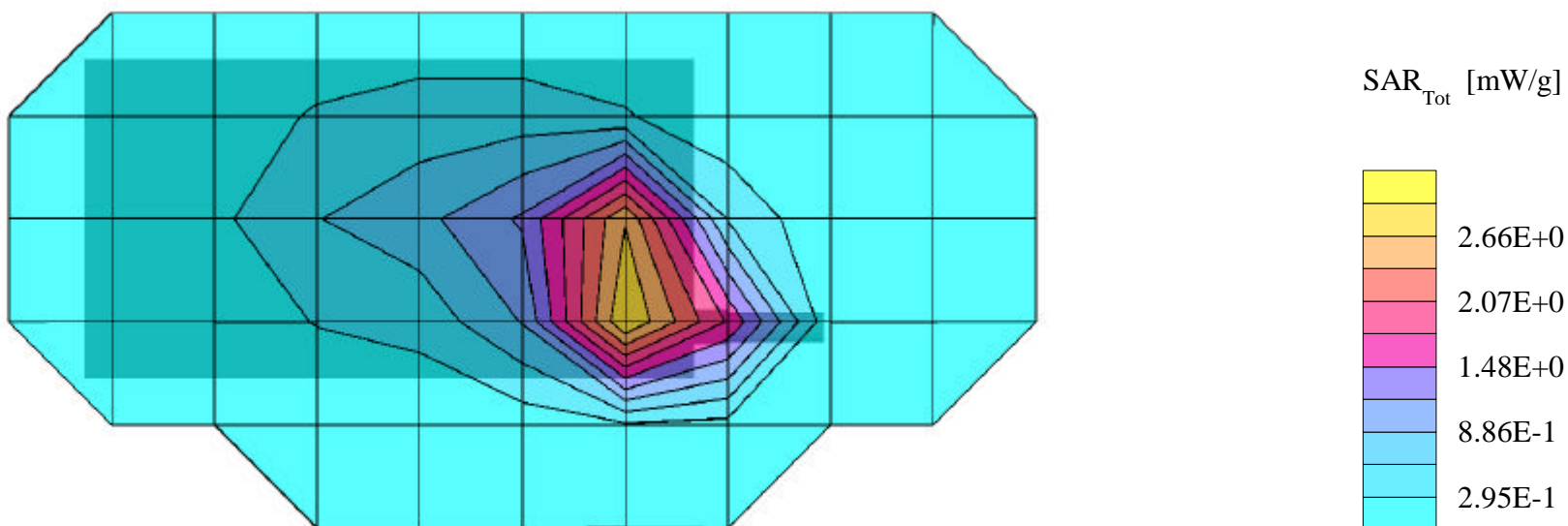
SAR (1g): 3.83 mW/g, **SAR (10g): 2.41 mW/g**

SYMBOL PDA WAN Terminal w/Integrated CDPD Radio Modem; Model: SPT1833

FM Mode, Ch.0991 [824.04MHz]

Conducted Power = 26.8dBm; Spacing = touching back of PDA to flat phantom

Test Date -- 08/08/2000



SYMBOL FCC ID:H9PSPT1833 -- FM [CDPD] Hand SAR

Generic Twin Phantom; Flat Section; Probe: ET3DV6 - SN1560 -- Probe Cal Date 20/02/01

Med. Parameters 835 MHz Muscle: $\sigma = 0.97$ mho/m $\epsilon_r = 55.2$ $\rho = 1.00$ g/cm³; Antenna Position -- Out; Crest Factor 1.0

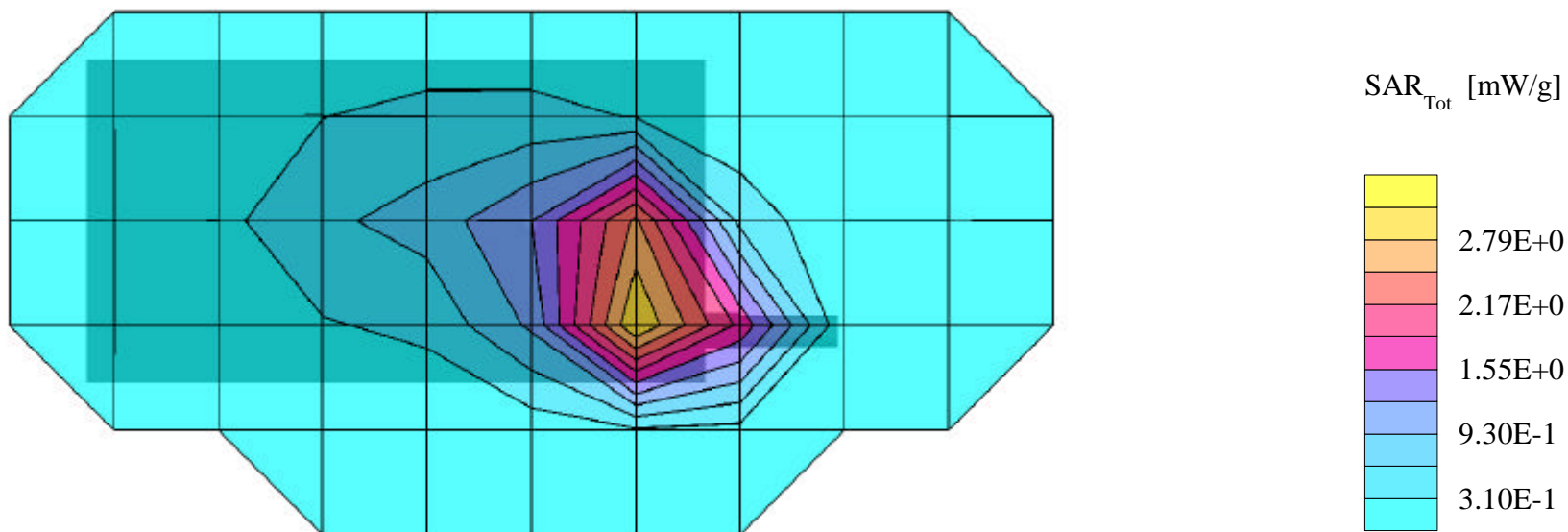
SAR (1g): 3.88 mW/g, **SAR (10g): 2.42 mW/g**

SYMBOL PDA WAN Terminal w/Integrated CDPD Radio Modem; Model: SPT1833

FM Mode, Ch.0383 [836.49MHz]

Conducted Power = 26.8dBm; Spacing = touching back of PDA to flat phantom

Test Date -- 08/08/2000



SYMBOL FCC ID:H9PSPT1833 -- FM [CDPD] Hand SAR

Generic Twin Phantom; Flat Section; Probe: ET3DV6 - SN1560 -- Probe Cal Date 20/02/01

Med. Parameters 835 MHz Muscle: $\sigma = 0.97$ mho/m $\epsilon_r = 55.2$ $\rho = 1.00$ g/cm³; Antenna Position -- Out; Crest Factor 1.0

SAR (1g): 4.00 mW/g, **SAR (10g): 2.49 mW/g**

SYMBOL PDA WAN Terminal w/Integrated CDPD Radio Modem; Model: SPT1833

FM Mode, Ch.0799 [848.97MHz]

Conducted Power = 26.8dBm; Spacing = touching back of PDA to flat phantom

Test Date -- 08/08/2000

