

SYMBOL FCC ID:H9PSPT1733 -- FM Hand SAR

Generic Twin Phantom; Flat Section; Probe: ET3DV5 - SN1370 -- Probe Cal Date 02/00

Med. Parameters 835 MHz Muscle: $\sigma = 0.95$ mho/m $\epsilon_r = 56.2$ $\rho = 1.00$ g/cm³; Antenna Position -- Out; Crest Factor 1.0

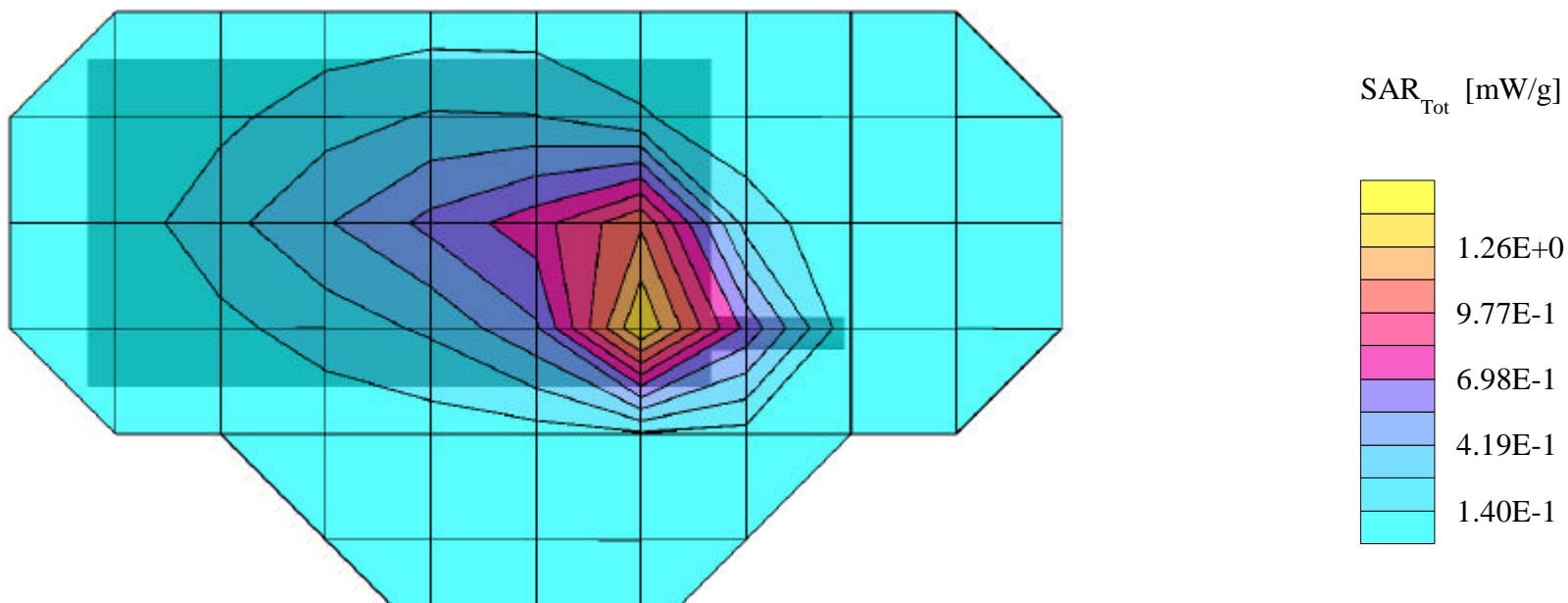
SAR (1g): 1.57 mW/g, **SAR (10g): 0.996 mW/g**

SYMBOL PDA Terminal w/Integrated CDPD Radio Modem; Model: SPT1733

FM Mode, Ch.0991 [824.04MHz]

Conducted Power = 27.8dBm; Spacing = touching flat phantom

Test Date -- 06/30/2000



SYMBOL FCC ID:H9PSPT1733 -- FM Hand SAR

Generic Twin Phantom; Flat Section; Probe: ET3DV5 - SN1370 -- Probe Cal Date 02/00

Med. Parameters 835 MHz Muscle: $\sigma = 0.95$ mho/m $\epsilon_r = 56.2$ $\rho = 1.00$ g/cm³; Antenna Position -- Out; Crest Factor 1.0

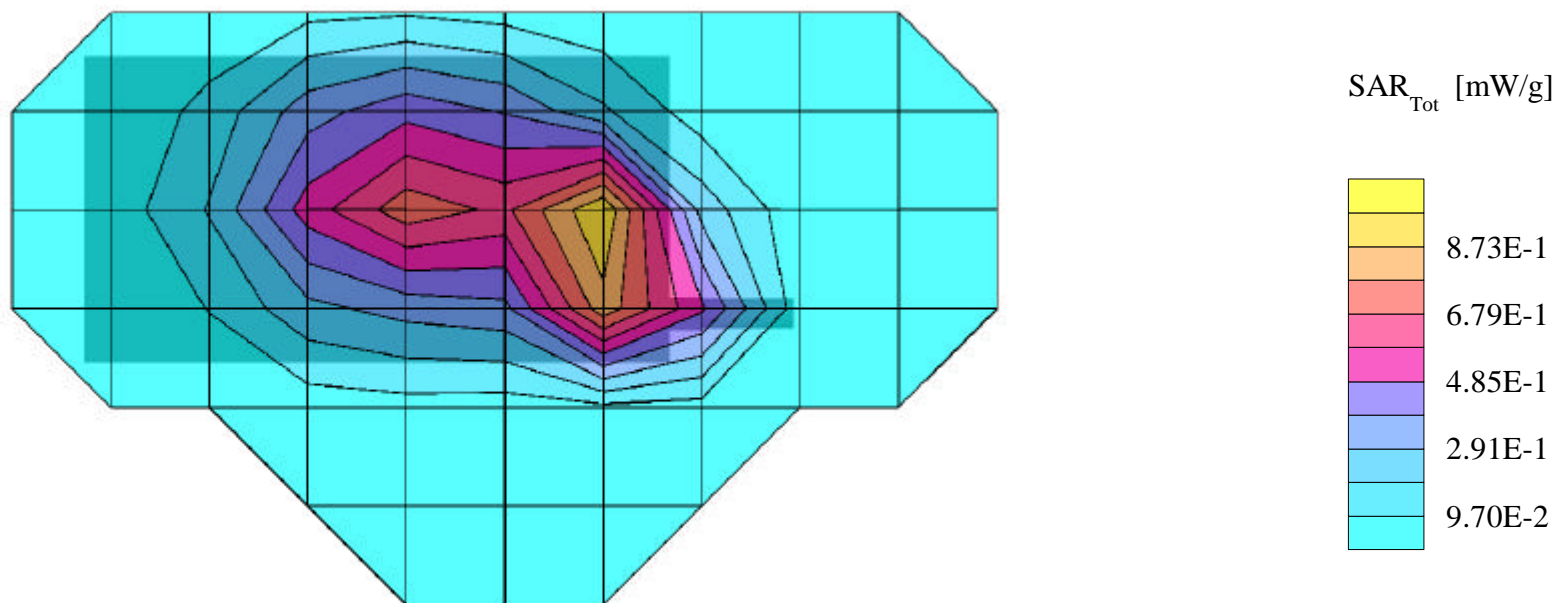
SAR (1g): 1.14 mW/g, **SAR (10g): 0.732 mW/g**

SYMBOL PDA Terminal w/Integrated CDPD Radio Modem; Model: SPT1733

FM Mode, Ch.0383 [836.49MHz]

Conducted Power = 27.8dBm; Spacing = touching flat phantom

Test Date -- 06/30/2000



SYMBOL FCC ID:H9PSPT1733 -- FM Hand SAR

Generic Twin Phantom; Flat Section; Probe: ET3DV5 - SN1370 -- Probe Cal Date 02/00

Med. Parameters 835 MHz Muscle: $\sigma = 0.95$ mho/m $\epsilon_r = 56.2$ $\rho = 1.00$ g/cm³; Antenna Position -- Out; Crest Factor 1.0

SAR (1g): 1.11 mW/g, **SAR (10g): 0.712 mW/g**

SYMBOL PDA Terminal w/Integrated CDPD Radio Modem; Model: SPT1733

FM Mode, Ch.0799 [848.97MHz]

Conducted Power = 27.8dBm; Spacing = touching flat phantom

Test Date -- 06/30/2000

