

# SYMBOL FCC ID:H9PSPT1733 -- FM Body SAR

Generic Twin Phantom; Flat Section; Probe: ET3DV5 - SN1370 -- Probe Cal Date 02/00

Med. Parameters 835 MHz Muscle:  $\sigma = 0.95$  mho/m  $\epsilon_r = 56.2$   $\rho = 1.00$  g/cm<sup>3</sup>; Antenna Position -- Out; Crest Factor 1.0

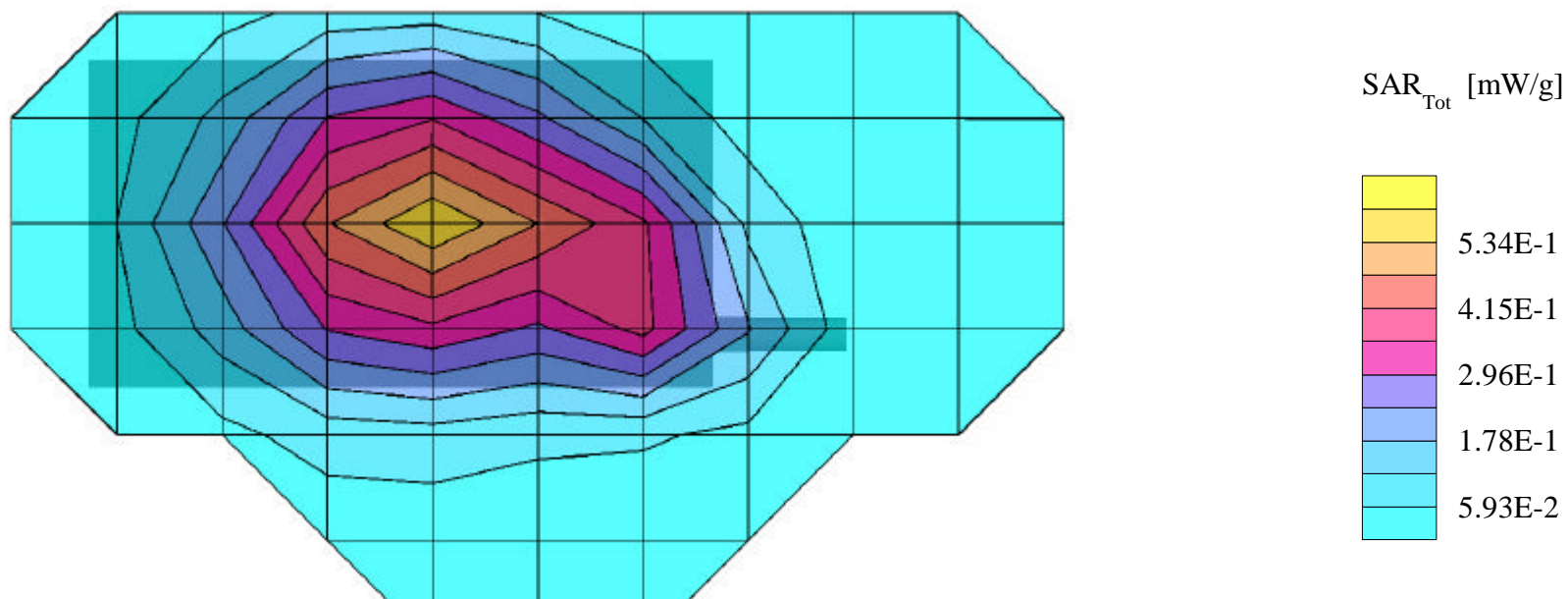
**SAR (1g): 0.555 mW/g, SAR (10g): 0.412 mW/g**

SYMBOL PDA Terminal w/Integrated CDPD Radio Modem; Model: SPT1733

FM Mode, Ch.0991 [824.04MHz]

Conducted Power = 27.8dBm; Spacing = 2.5cm from flat phantom to PDA w/Holster

Test Date -- 06/30/2000



# SYMBOL FCC ID:H9PSPT1733 -- FM Body SAR

Generic Twin Phantom; Flat Section; Probe: ET3DV5 - SN1370 -- Probe Cal Date 02/00

Med. Parameters 835 MHz Muscle:  $\sigma = 0.95$  mho/m  $\epsilon_r = 56.2$   $\rho = 1.00$  g/cm<sup>3</sup>; Antenna Position -- Out; Crest Factor 1.0

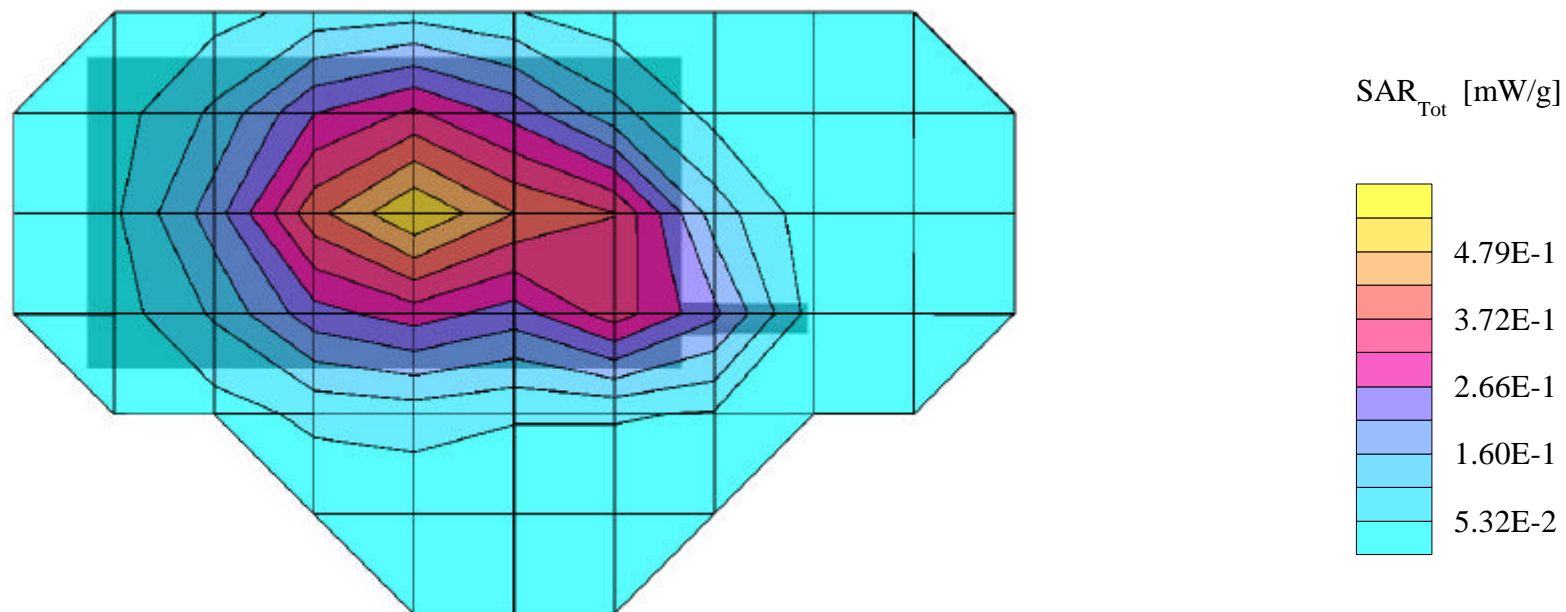
**SAR (1g): 0.481 mW/g, SAR (10g): 0.355 mW/g**

SYMBOL PDA Terminal w/Integrated CDPD Radio Modem; Model: SPT1733

FM Mode, Ch.0383 [836.49MHz]

Conducted Power = 27.8dBm; Spacing = 2.5cm from flat phantom to PDA w/Holster

Test Date -- 06/30/2000



# SYMBOL FCC ID:H9PSPT1733 -- FM Body SAR

Generic Twin Phantom; Flat Section; Probe: ET3DV5 - SN1370 -- Probe Cal Date 02/00

Med. Parameters 835 MHz Muscle:  $\sigma = 0.95$  mho/m  $\epsilon_r = 56.2$   $\rho = 1.00$  g/cm<sup>3</sup>; Antenna Position -- Out; Crest Factor 1.0

**SAR (1g): 0.485 mW/g, SAR (10g): 0.355 mW/g**

SYMBOL PDA Terminal w/Integrated CDPD Radio Modem; Model: SPT1733

FM Mode, Ch.0799 [848.97MHz]

Conducted Power = 27.8dBm; Spacing = 2.5cm from flat phantom to PDA w/Holster

Test Date -- 06/30/2000

