

SYMBOL Tech. Inc. FCC ID: H9PPPT28C6 --- 2.4GHz.Body SAR

SAM Phantom; Flat Section; Probe:ET3DV6 - SN1677; ConvF(4.00,4.00,4.00)

Med. Parameters 2450 MHz Muscle: $\sigma = 1.96$ mho/m $\epsilon_r = 53.6$ $\rho = 1.00$ g/cm³; Antenna Position -- Fixed; Crest Factor 1.0

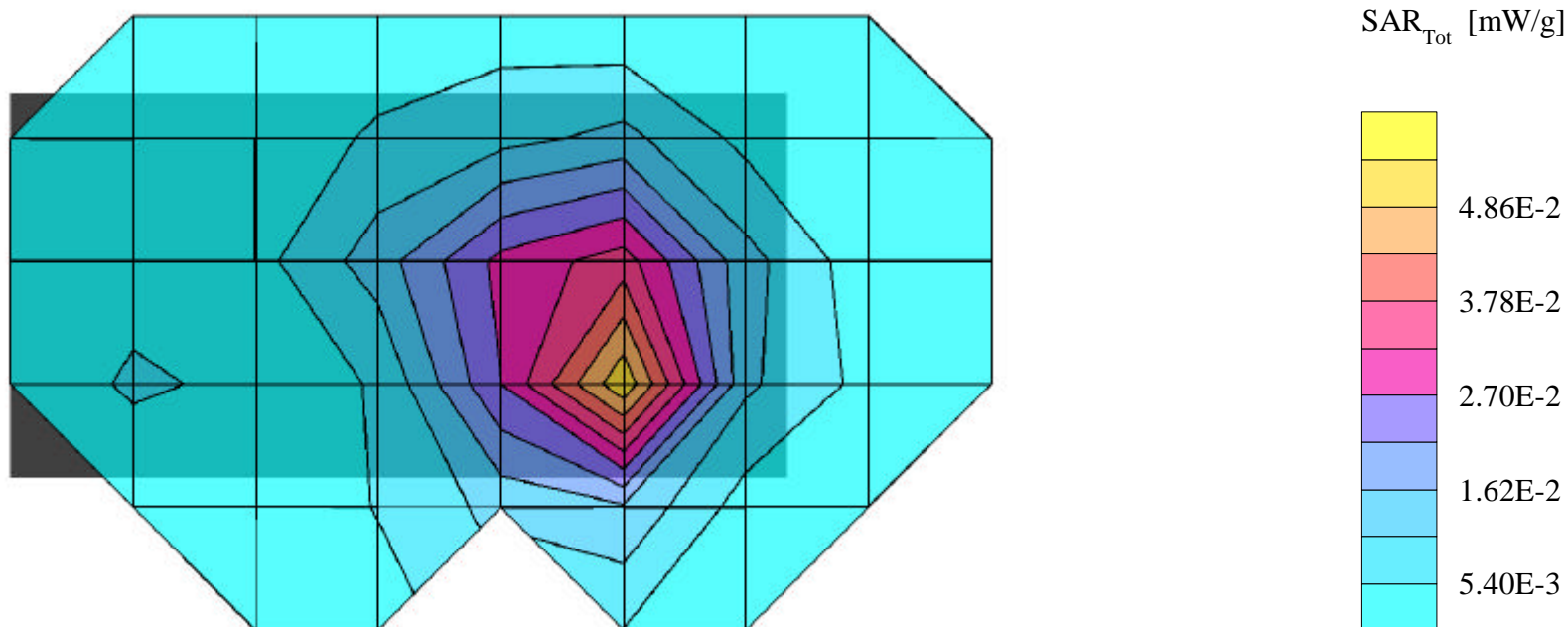
SAR (1g): 0.108 mW/g, SAR (10g): 0.0337 mW/g

SYMBOL 2.4GHz. Pocket PC w/Cisco LKD102040 -- Model: PPT2846

Low Channel [2412MHz] ; Standard Battery; Ambient Temp. = 22.2°C / Meas. Tissue Temp. = 22.1°C

Radiated Power = 100mW; Spacing = 2.5cm. from Backside of EUT to flat phantom, w/Holster and BeltClip

Test Date -- 07/31/2002 [FCC/OET Bulletin 65 - Supplement C, July 2001]



SYMBOL Tech. Inc. FCC ID: H9PPPT28C6 --- 2.4GHz. Body SAR

SAM Phantom; Flat Section; Probe:ET3DV6 - SN1677; ConvF(4.00,4.00,4.00)

Med. Parameters 2450 MHz Muscle: $\sigma = 1.96$ mho/m $\epsilon_r = 53.6$ $\rho = 1.00$ g/cm³; Antenna Position -- Fixed; Crest Factor 1.0

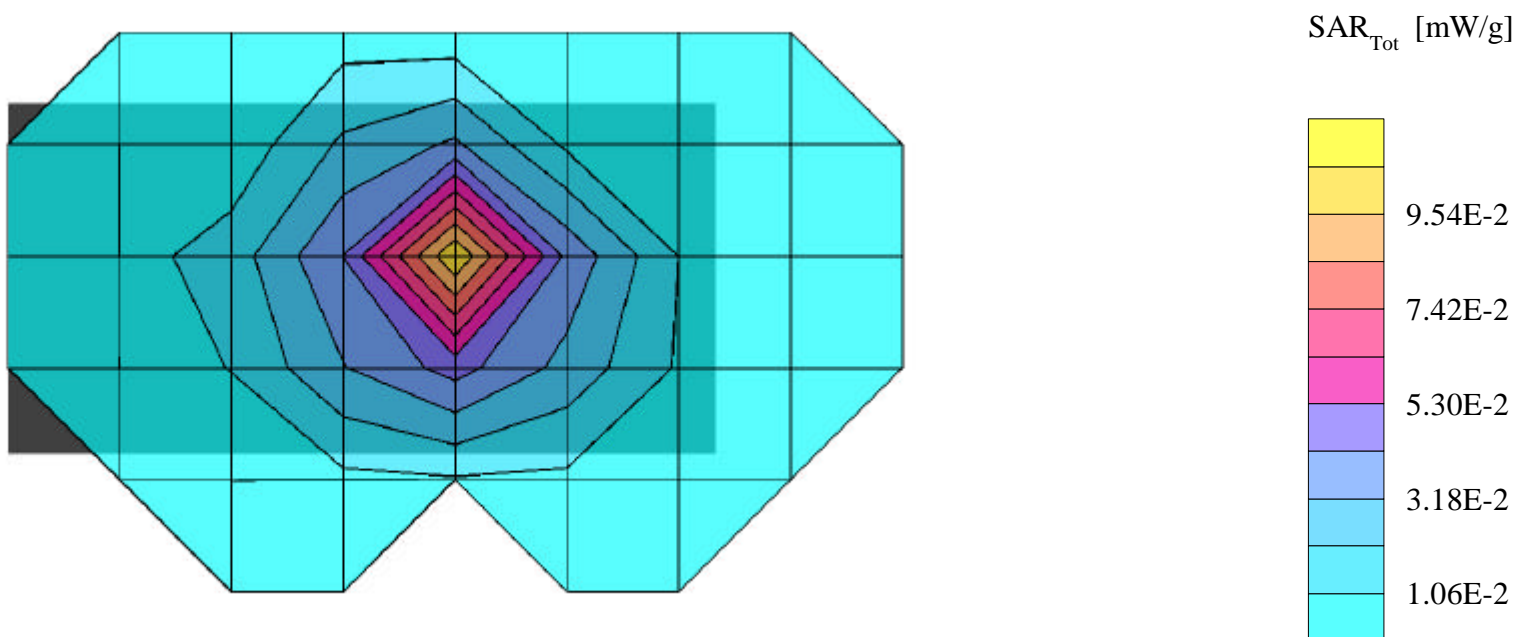
SAR (1g): 0.124 mW/g, SAR (10g): 0.0566 mW/g

SYMBOL 2.4GHz. Pocket PC w/Cisco LKD102040 -- Model: PPT2846

Mid Channel [2437MHz] ; Standard Battery; Ambient Temp. = 22.2°C / Meas. Tissue Temp. = 22.1°C

Radiated Power = 100mW; Spacing = 2.5cm. from Backside of EUT to flat phantom, w/Holster and BeltClip

Test Date -- 07/31/2002 [FCC/OET Bulletin 65 - Supplement C, July 2001]



SYMBOL Tech. Inc. FCC ID: H9PPPT28C6 --- 2.4GHz. Body SAR

SAM Phantom; Flat Section; Probe:ET3DV6 - SN1677; ConvF(4.00,4.00,4.00)

Med. Parameters 2450 MHz Muscle: $\sigma = 1.96$ mho/m $\epsilon_r = 53.6$ $\rho = 1.00$ g/cm³; Antenna Position -- Fixed; Crest Factor 1.0

SAR (1g): 0.134 mW/g , SAR (10g): 0.0356 mW/g

SYMBOL 2.4GHz. Pocket PC w/Cisco LKD102040 -- Model: PPT28C6

High Channel [2462MHz] ; Standard Battery; Ambient Temp. = 22.2°C / Meas. Tissue Temp. = 22.1°C

Radiated Power = 100mW; Spacing = 2.5cm. from Backside of EUT to flat phantom, w/Holster and BeltClip

Test Date -- 07/31/2002 [FCC/OET Bulletin 65 - Supplement C, July 2001]

