

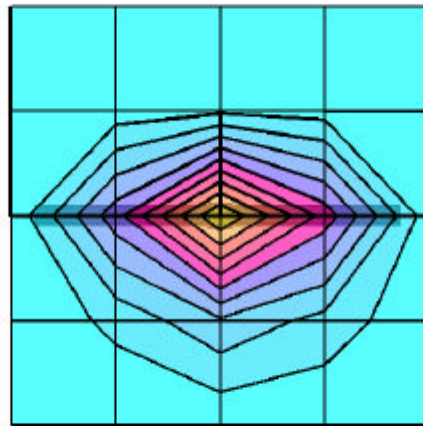
1900MHz Brain Dipole Validation

SAM Phantom; Flat Section; Probe:ET3DV6 - SN1677; ConvF(5.30,5.30,5.30)

Med. Parameters 1900 MHz Brain: $\sigma = 1.41$ mho/m $\epsilon_r = 40.2$ $\rho = 1.00$ g/cm³; Antenna Position -- Out; Crest Factor 1.0
SAR (1g): 10.1 mW/g, SAR (10g): 5.20 mW/g

1900MHz Brain Dipole Validation (D1900V2 S/N: 502)

Frequency: 1900 MHz; Antenna Input Power: 250 [mW]; Ambient Temp. = 22.2°C / Meas. Tissue Temp. = 22.0°
PCTEST Brain Tissue Simulating Liquid [04/30/2002]



SAR_{Tot} [mW/g]

