

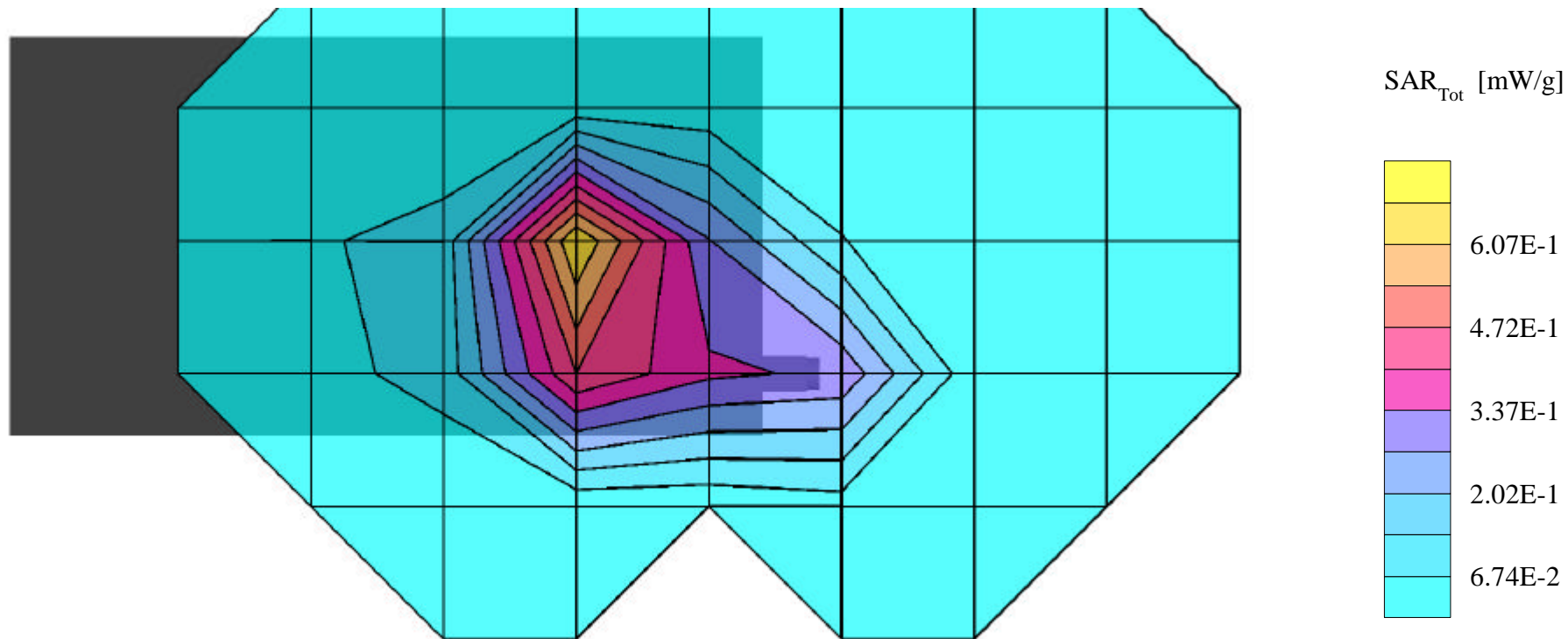
SYMBOL FCC ID:H9PPPT2837

SAM Phantom; Flat Section; Probe:ET3DV6 - SN1677; ConvF(4.90,4.90,4.90)

Med. Parameters 1900 MHz Muscle: $\sigma = 1.55$ mho/m $\epsilon_r = 54.9$ $\rho = 1.00$ g/cm³; Antenna Position -- In; Crest Factor 8.0

SAR (1g): 0.827 mW/g, SAR (10g): 0.497 mW/g

SYMBOL MODEL:PPT2837 GSM HAND HELD TERMINAL
CHAN 810 BODY SAR; Ambient Temp. = 22.2°C / Meas. Tissue Temp. 22.0°C
With boly holster
04-30-2001



SYMBOL FCC ID:H9PPPT2837

SAM Phantom; Flat Section; Probe:ET3DV6 - SN1677; ConvF(4.90,4.90,4.90)

Med. Parameters 1900 MHz Muscle: $\sigma = 1.55$ mho/m $\epsilon_r = 54.9$ $\rho = 1.00$ g/cm³; Antenna Position -- In; Crest Factor 8.0

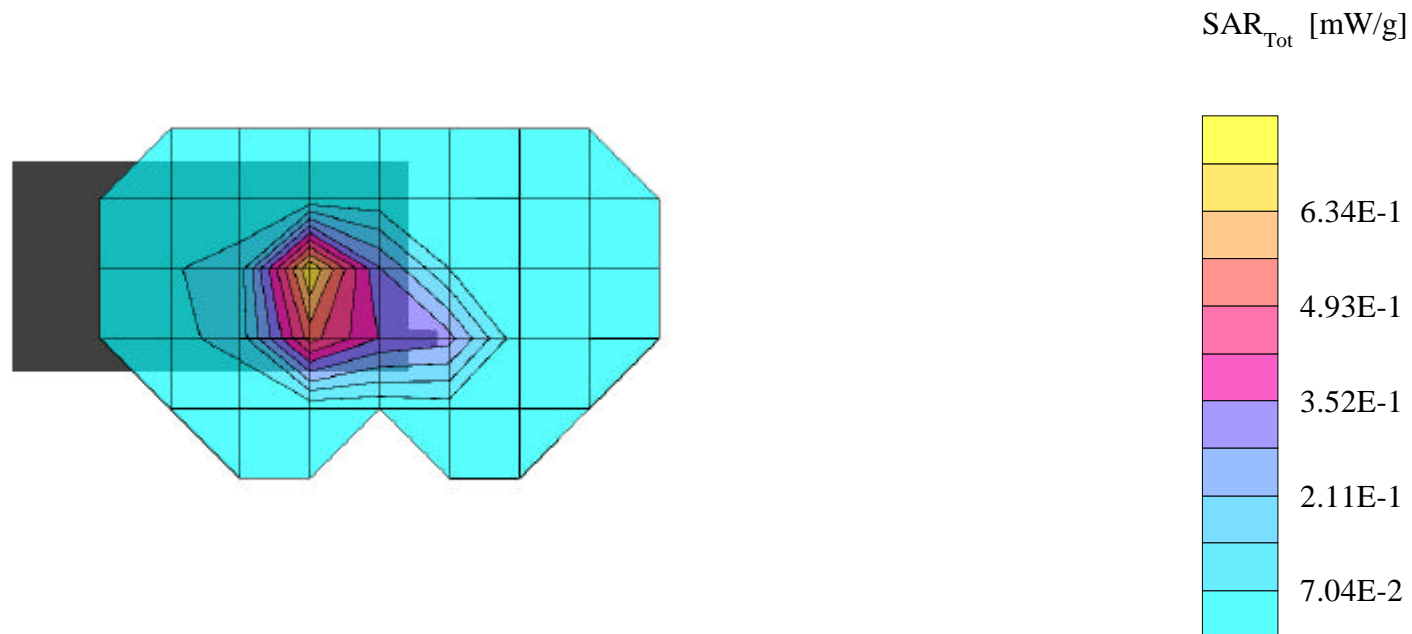
SAR (1g): 0.897 mW/g, SAR (10g): 0.532 mW/g

SYMBOL MODEL:PPT2837 GSM HAND HELD TERMINAL

CHAN 512 (1850.2.2 MHz) BODY SAR; Ambient Temp. = 22.2°C / Meas. Tissue Temp. 22.0°C

With boly holster

04-30-2001



SYMBOL FCC ID:H9PPPT2837

SAM Phantom; Flat Section; Probe:ET3DV6 - SN1677; ConvF(4.90,4.90,4.90)

Med. Parameters 1900 MHz Muscle: $\sigma = 1.55$ mho/m $\epsilon_r = 54.9$ $\rho = 1.00$ g/cm³; Antenna Position -- In; Crest Factor 8.0

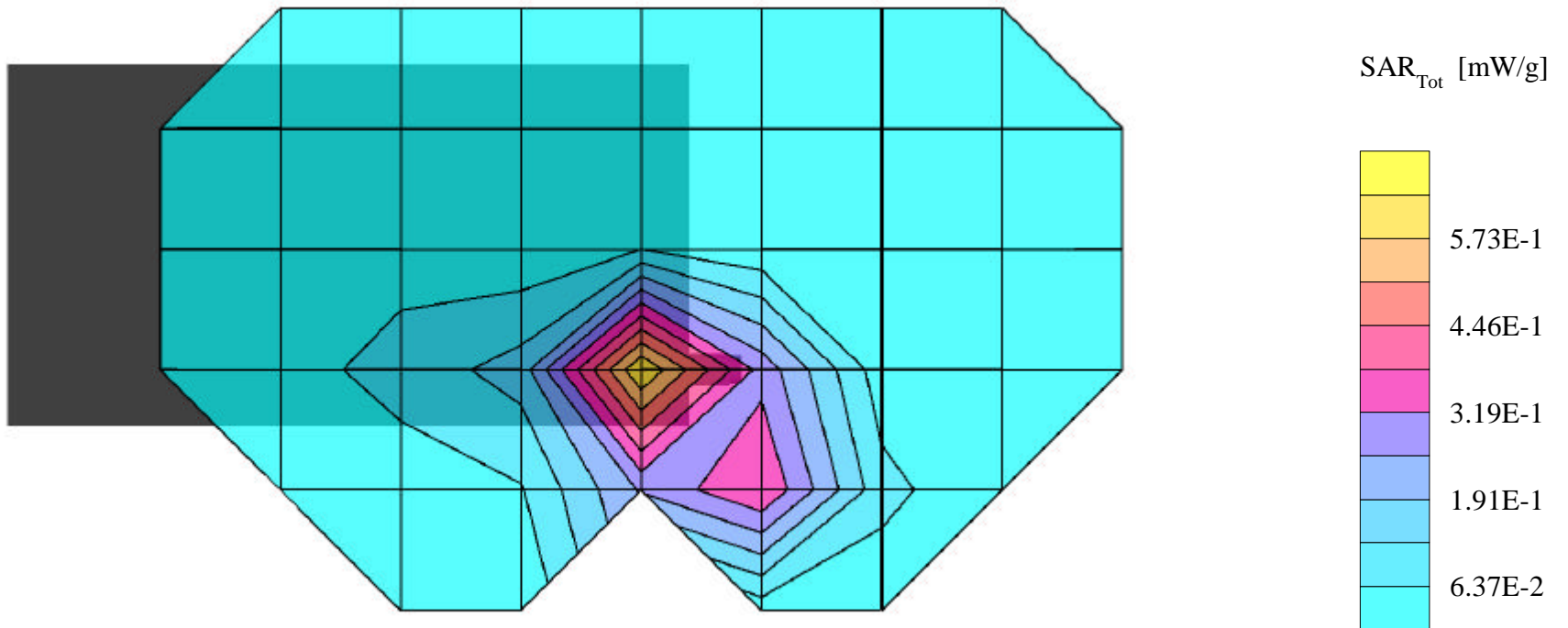
SAR (1g): 0.631 mW/g, SAR (10g): 0.377 mW/g

SYMBOL MODEL:PPT2837 GSM HAND HELD TERMINAL

CHAN 661 (1880 MHz) BODY SAR; Ambient Temp. = 22.2°C / Meas. Tissue Temp. 22.0°C

With boly holster

04-30-2001



SYMBOL FCC ID:H9PPPT2837

SAM Phantom; Flat Section; Probe:ET3DV6 - SN1677; ConvF(4.90,4.90,4.90)

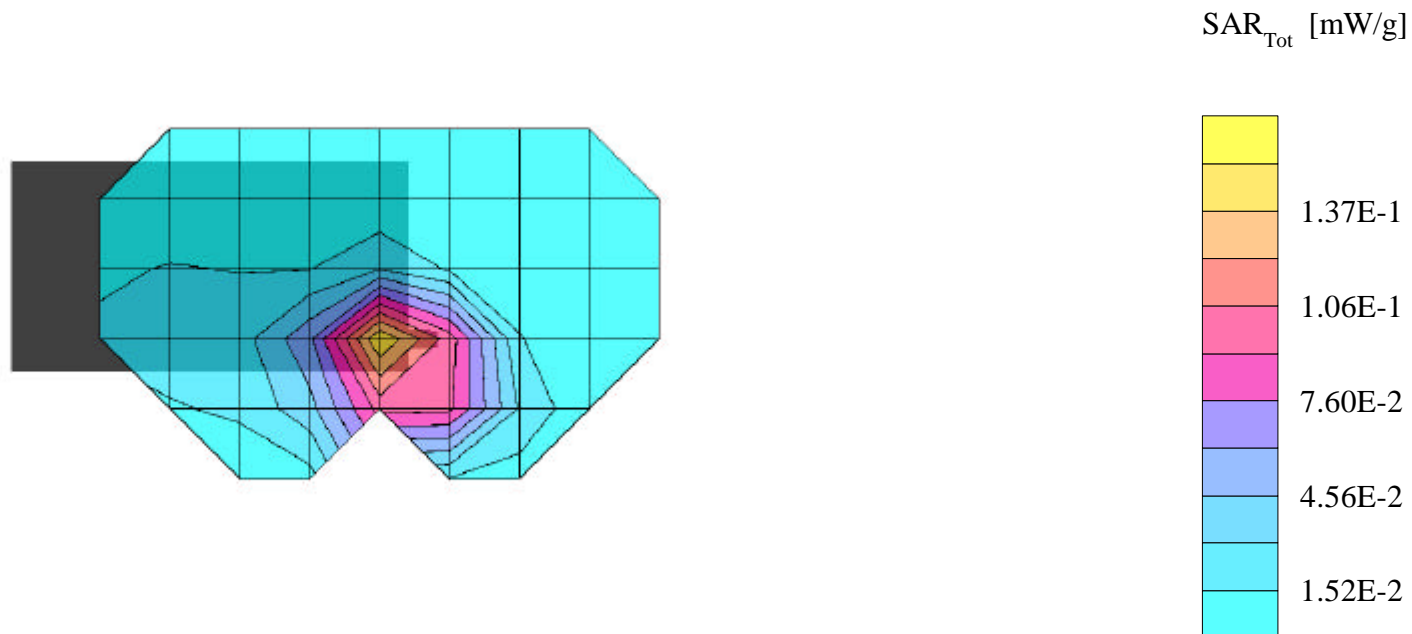
Med. Parameters 1900 MHz Muscle: $\sigma = 1.55$ mho/m $\epsilon_r = 54.9$ $\rho = 1.00$ g/cm³; Antenna Position -- In; Crest Factor 8.0

SAR (1g): 0.156 mW/g, SAR (10g): 0.0999 mW/g

SYMBOL MODEL:PPT2837 GSM HAND HELD TERMINAL
CHAN 661 BODY SAR; Ambient Temp. = 22.2°C / Meas. Tissue Temp. 22.0°C

With boly holster

04-30-2001



SYMBOL FCC ID:H9PPPT2837

SAM Phantom; Flat Section; Probe:ET3DV6 - SN1677; ConvF(4.90,4.90,4.90)

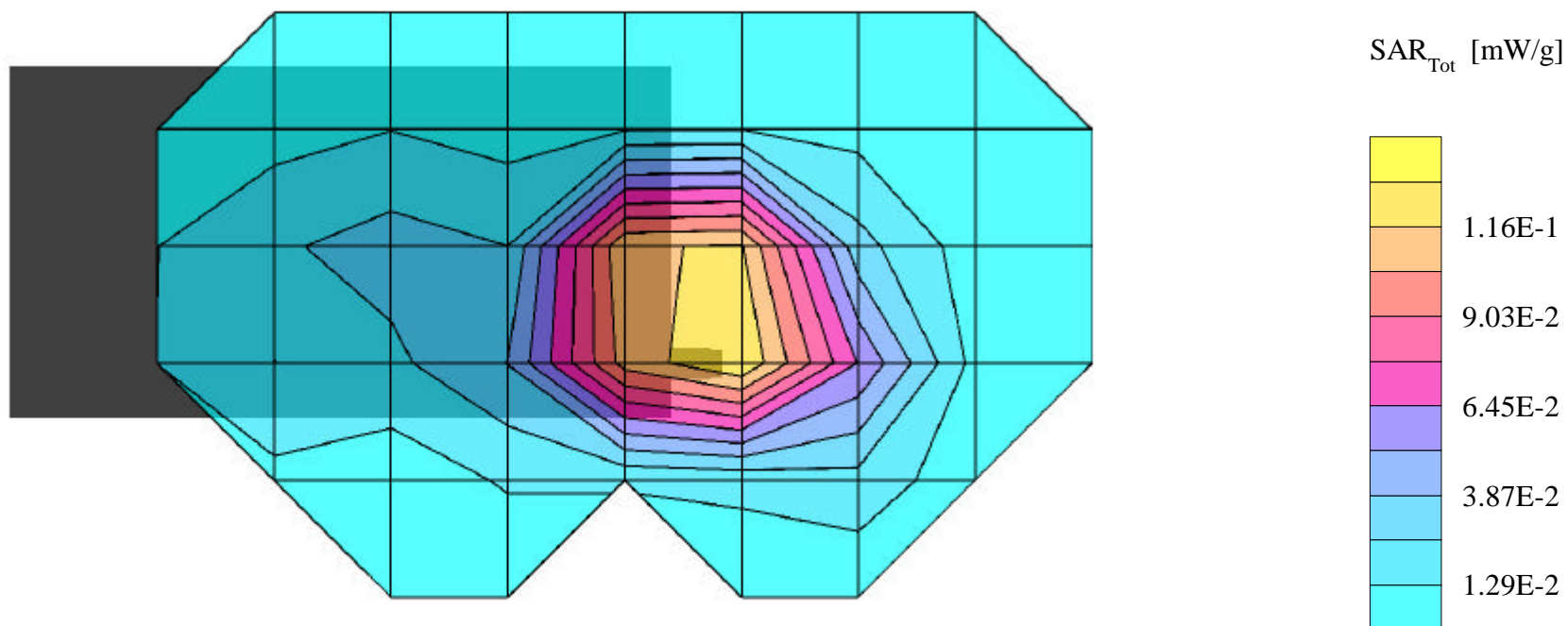
Med. Parameters 1900 MHz Muscle: $\sigma = 1.55$ mho/m $\epsilon_r = 54.9$ $\rho = 1.00$ g/cm³; Antenna Position -- In; Crest Factor 8.0

SAR (1g): 0.165 mW/g, SAR (10g): 0.106 mW/g

SYMBOL MODEL:PPT2837 GSM HAND HELD TERMINAL
CHAN 810 BODY SAR; Ambient Temp. = 22.2°C / Meas. Tissue Temp. 22.0°C

With boly holster

04-30-2001



SYMBOL FCC ID:H9PPPT2837

SAM Phantom; Flat Section; Probe:ET3DV6 - SN1677; ConvF(4.90,4.90,4.90)

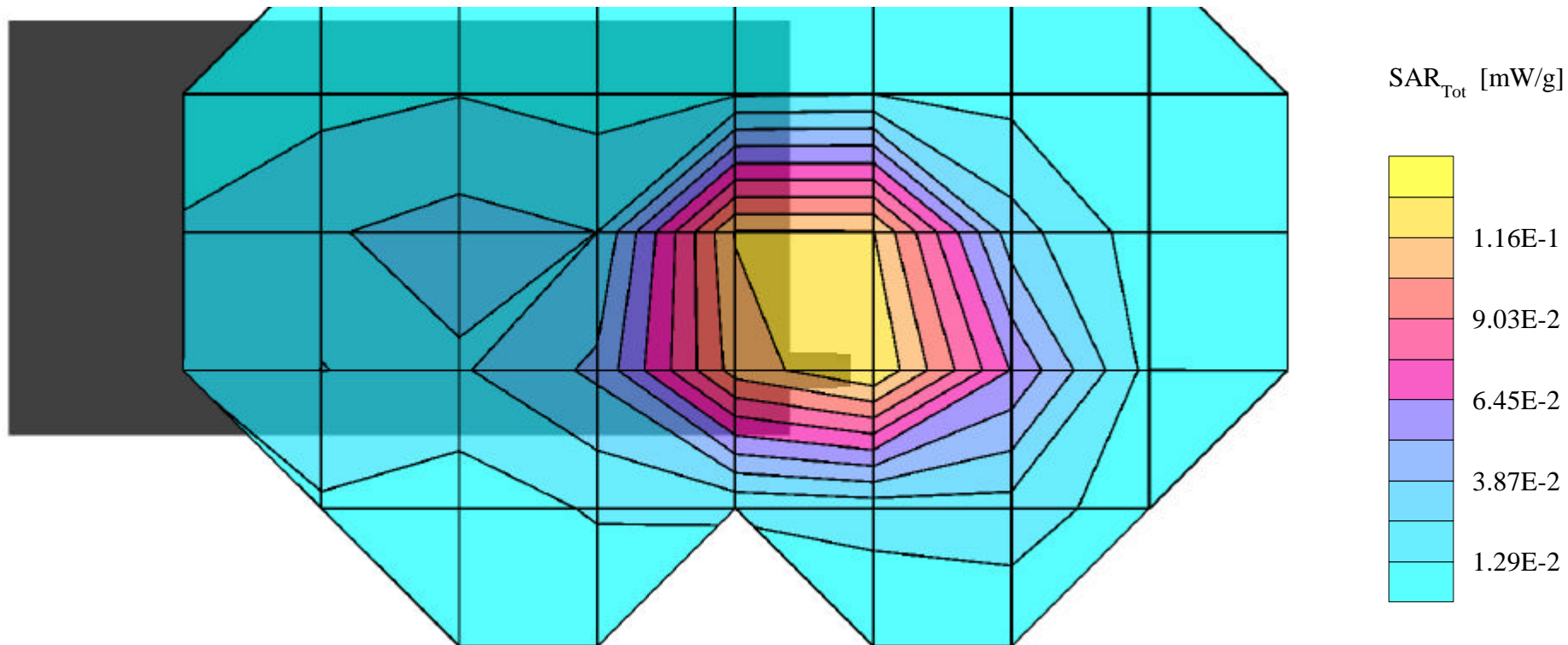
Med. Parameters 1900 MHz Muscle: $\sigma = 1.55$ mho/m $\epsilon_r = 54.9$ $\rho = 1.00$ g/cm³; Antenna Position -- In; Crest Factor 8.0

SAR (1g): 0.165 mW/g, SAR (10g): 0.106 mW/g

SYMBOL MODEL:PPT2837 GSM HAND HELD TERMINAL
CHAN 512 BODY SAR; Ambient Temp. = 22.2°C / Meas. Tissue Temp. 22.0°C

With boly holster

04-30-2001



SYMBOL FCC ID H9PPPT2837

SAM Phantom; Flat Section; Probe:ET3DV6 - SN1677; ConvF(4.90,4.90,4.90)

Med. Parameters 1900 MHz Muscle: $\sigma = 1.55$ mho/m $\epsilon_r = 54.9$ $\rho = 1.00$ g/cm³; Antenna Position -- In; Crest Factor 8.0

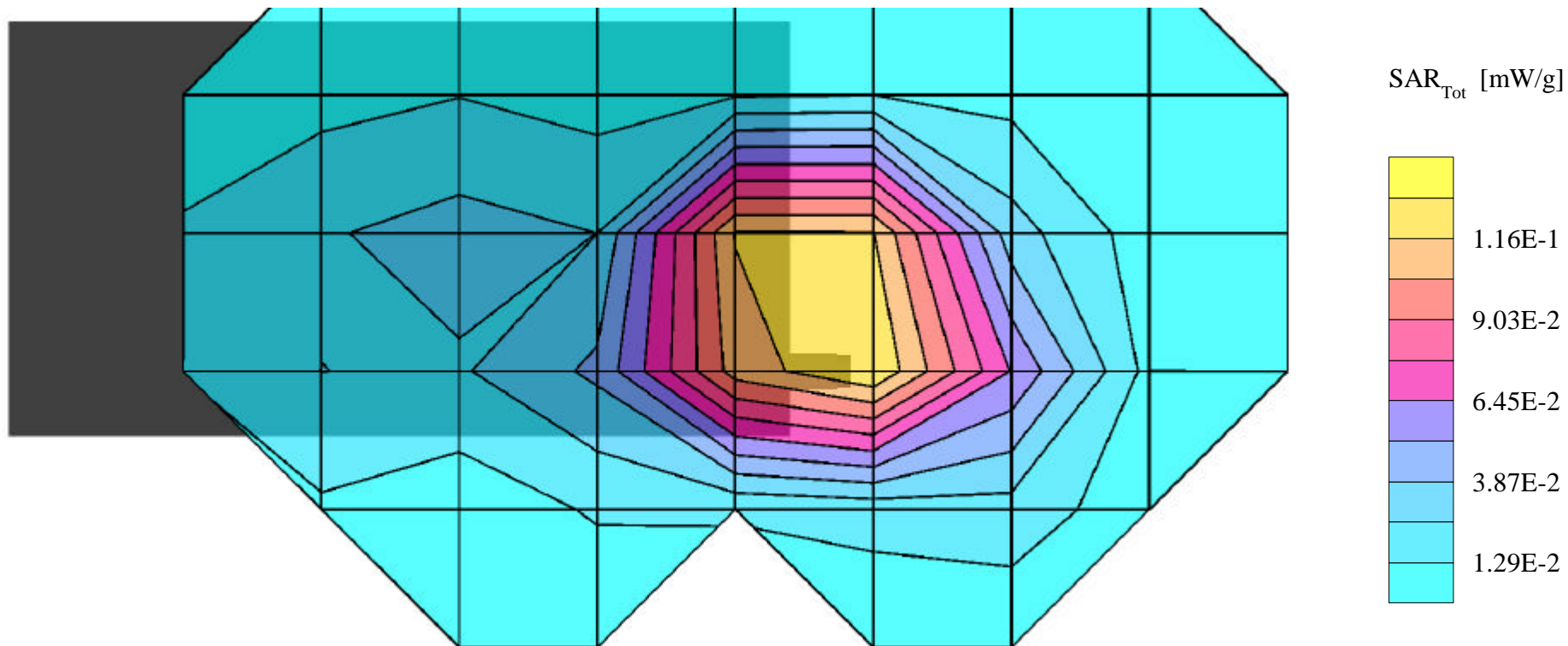
SAR (1g): 0.165 mW/g, SAR (10g): 0.106 mW/g

SYMBOL MODEL:PPT2837 GSM HAND HELD TERMINAL

CHAN 512(1850.2 MHz) 29.58 dBm BODY SAR; Ambient Temp. = 22.2°C / Meas. Tissue Temp. 22.0°C

With holster

04-30-2001



SYMBOL FCC ID:H9PPPT2837

SAM Phantom; Flat Section; Probe:ET3DV6 - SN1677; ConvF(4.90,4.90,4.90)

Med. Parameters 1900 MHz Muscle: $\sigma = 1.55$ mho/m $\epsilon_r = 54.9$ $\rho = 1.00$ g/cm³; Antenna Position -- In; Crest Factor 8.0

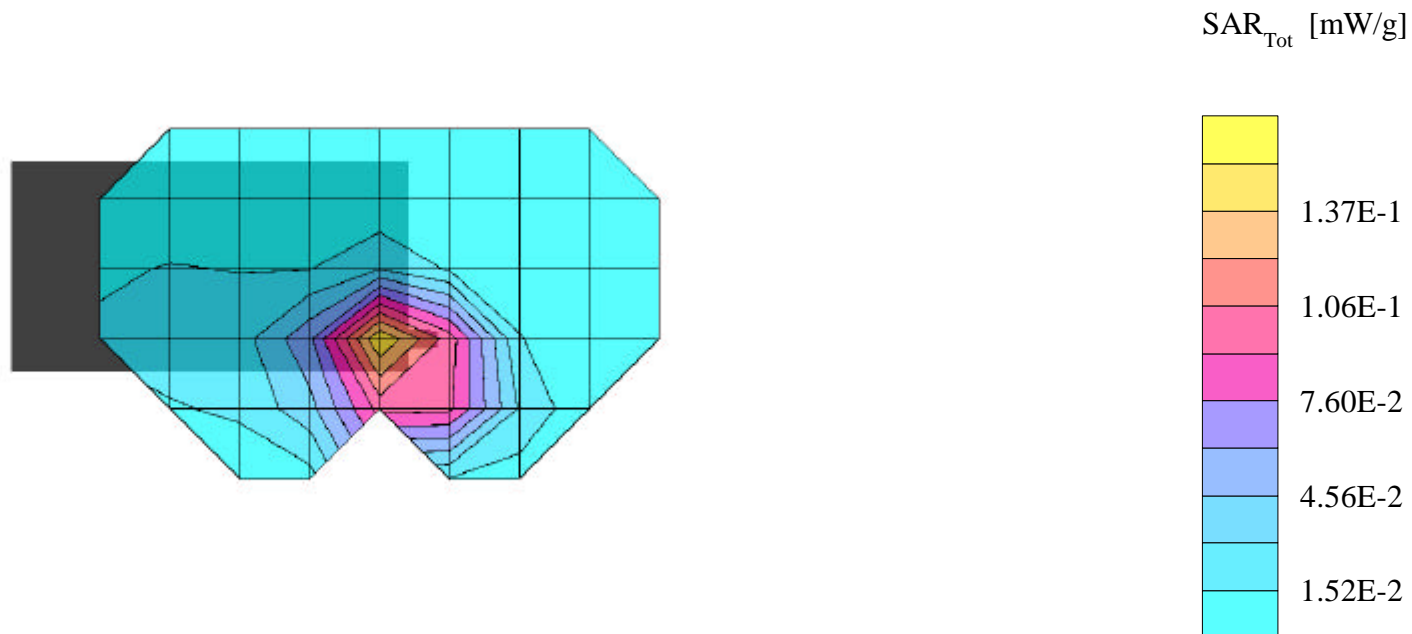
SAR (1g): 0.156 mW/g, SAR (10g): 0.0999 mW/g

SYMBOL MODEL:PPT2837 GSM HAND HELD TERMINAL

CHAN 661 (1880 MHz) 30.0 dBm BODY SAR; Ambient Temp. = 22.2°C / Meas. Tissue Temp. 22.0°C

With holster

04-30-2001



SYMBOL FCC ID: H9PPPT2837

SAM Phantom; Flat Section; Probe:ET3DV6 - SN1677; ConvF(4.90,4.90,4.90)

Med. Parameters 1900 MHz Muscle: $\sigma = 1.55$ mho/m $\epsilon_r = 54.9$ $\rho = 1.00$ g/cm³; Antenna Position -- In; Crest Factor 8.0

SAR (1g): 0.165 mW/g, SAR (10g): 0.106 mW/g

SYMBOL MODEL:PPT-2837 GSM HAND HELD TERMINAL

CHAN 810 (1909.8 MHz) 29.92 dBm BODY SAR; Ambient Temp. = 22.2°C / Meas. Tissue Temp. 22.0°C

With holster

04-30-2001

