

# SYMBOL FCC ID: H9PPPT2833 -- FM [CDPD] Body SAR

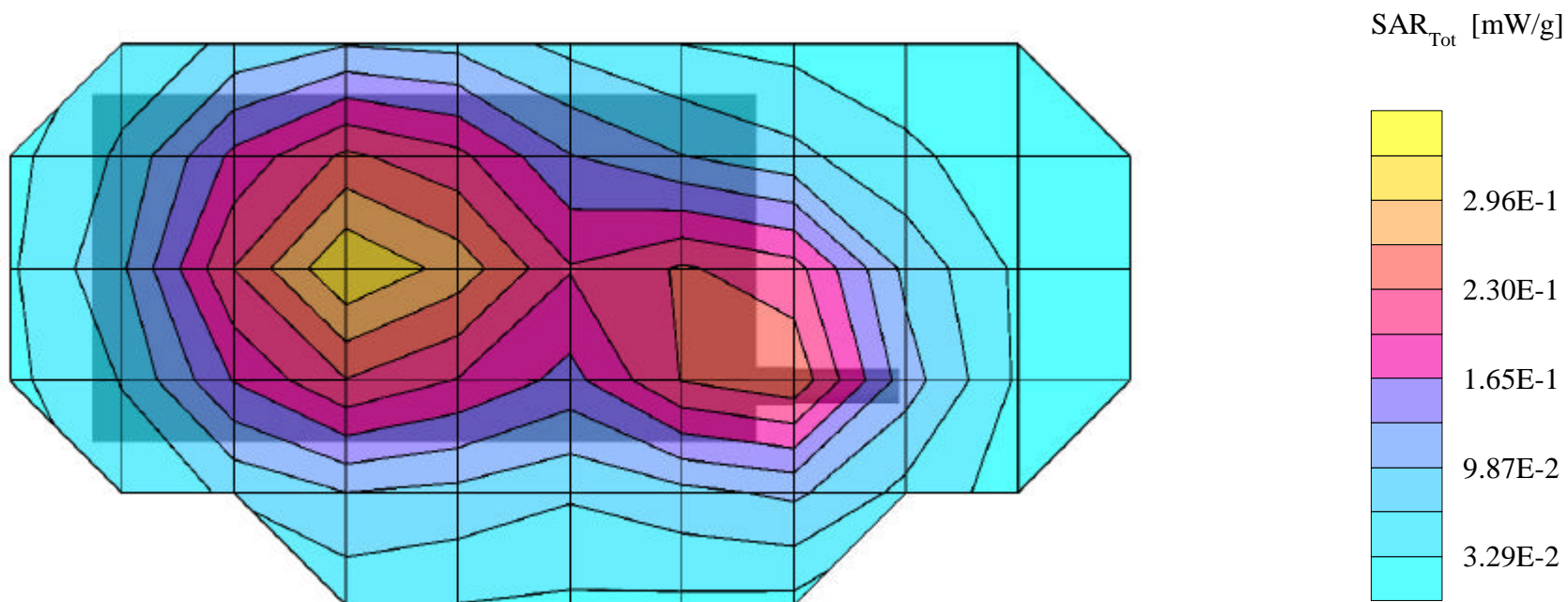
Generic Twin Phantom; Flat Section; Probe: ET3DV6 - SN1560 -- Probe Cal Date 20/02/01; ConvF(6.52,6.52,6.52)  
Med. Parameters 835 MHz Muscle:  $\sigma = 0.97$  mho/m  $\epsilon_r = 55.2$   $\rho = 1.00$  g/cm<sup>3</sup>; Antenna Position -- Out; Crest Factor 1.0  
**SAR (1g): 0.320 mW/g, SAR (10g): 0.235 mW/g**

SYMBOL PDA Terminal w/Integrated CDPD Radio Modem; Model: PPT2833

FM Mode, Ch.0383 [836.49MHz]

Conducted Power = 26.8dBm; Spacing = 2.5cm from back of PDA to flat phantom, w/Holster

Test Date -- 08/23/2001



# SYMBOL FCC ID:H9PPPT2833 -- FM [CDPD] Hand SAR

Generic Twin Phantom; Flat Section; Probe: ET3DV6 - SN1560 -- Probe Cal Date 20/02/01; ConvF(6.52,6.52,6.52)  
Med. Parameters 835 MHz Muscle:  $\sigma = 0.97$  mho/m  $\epsilon_r = 55.2$   $\rho = 1.00$  g/cm<sup>3</sup>; Antenna Position -- Out; Crest Factor 1.0  
**SAR (1g): 3.84 mW/g, SAR (10g): 2.41 mW/g**

SYMBOL PDA Terminal w/Integrated CDPD Radio Modem; Model: PPT2833  
FM Mode, Ch.0383 [836.49MHz]  
Conducted Power = 26.8dBm; Spacing = touching back of PDA to flat phantom  
Test Date -- 08/23/2001

