

# SYMBOL FCC ID:H9PPPT2833 -- FM [CDPD] Body SAR

Generic Twin Phantom; Flat Section; Probe: ET3DV6 - SN1560 -- Probe Cal Date 20/02/01

Med. Parameters 835 MHz Muscle:  $\sigma = 0.96$  mho/m  $\epsilon_r = 55.5$   $\rho = 1.00$  g/cm<sup>3</sup>; Antenna Position -- Out; Crest Factor 1.0

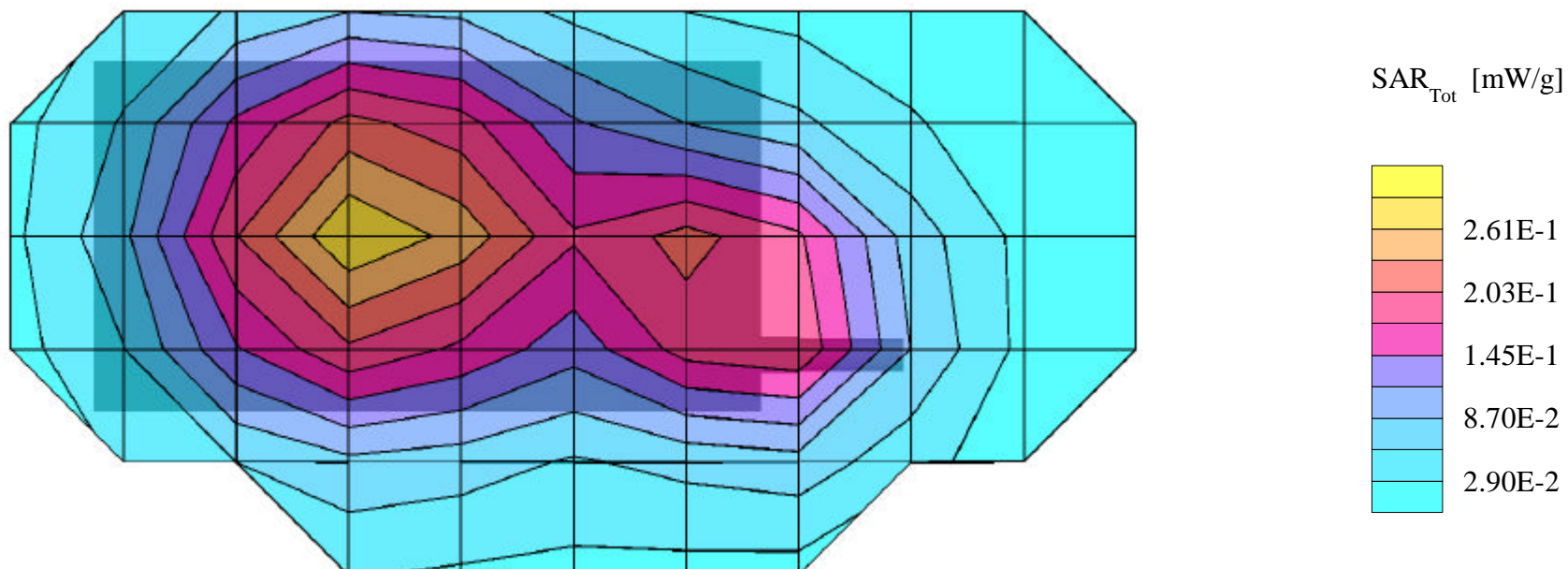
**SAR (1g): 0.317 mW/g, SAR (10g): 0.191 mW/g**

SYMBOL PDA Terminal w/Integrated CDPD Radio Modem; Model: PPT2833

FM Mode, Ch.0991 [824.04MHz]

Conducted Power = 26.8dBm; Spacing = 2.5cm from back of PDA to flat phantom, w/Holster

Test Date -- 08/23/2001



# SYMBOL FCC ID:H9PPPT2833 -- FM [CDPD] Body SAR

Generic Twin Phantom; Flat Section; Probe: ET3DV6 - SN1560 -- Probe Cal Date 20/02/01

Med. Parameters 835 MHz Muscle:  $\sigma = 0.96$  mho/m  $\epsilon_r = 55.5$   $\rho = 1.00$  g/cm<sup>3</sup>; Antenna Position -- Out; Crest Factor 1.0

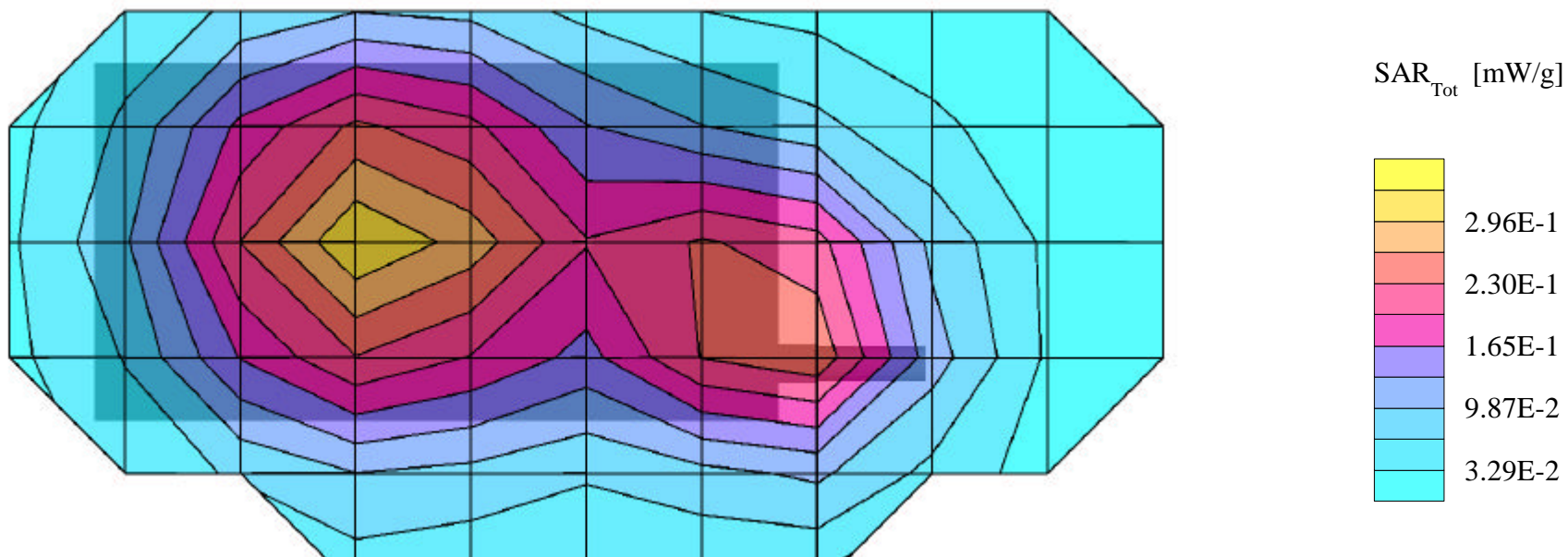
**SAR (1g): 0.320 mW/g, SAR (10g): 0.235 mW/g**

SYMBOL PDA Terminal w/Integrated CDPD Radio Modem; Model: PPT2833

FM Mode, Ch.0383 [836.49MHz]

Conducted Power = 26.8dBm; Spacing = 2.5cm from back of PDA to flat phantom, w/Holster

Test Date -- 08/23/2001



# SYMBOL FCC ID:H9PPPT2833 -- FM [CDPD] Body SAR

Generic Twin Phantom; Flat Section; Probe: ET3DV6 - SN1560 -- Probe Cal Date 20/02/01

Med. Parameters 835 MHz Muscle:  $\sigma = 0.96$  mho/m  $\epsilon_r = 55.5$   $\rho = 1.00$  g/cm<sup>3</sup>; Antenna Position -- Out; Crest Factor 1.0

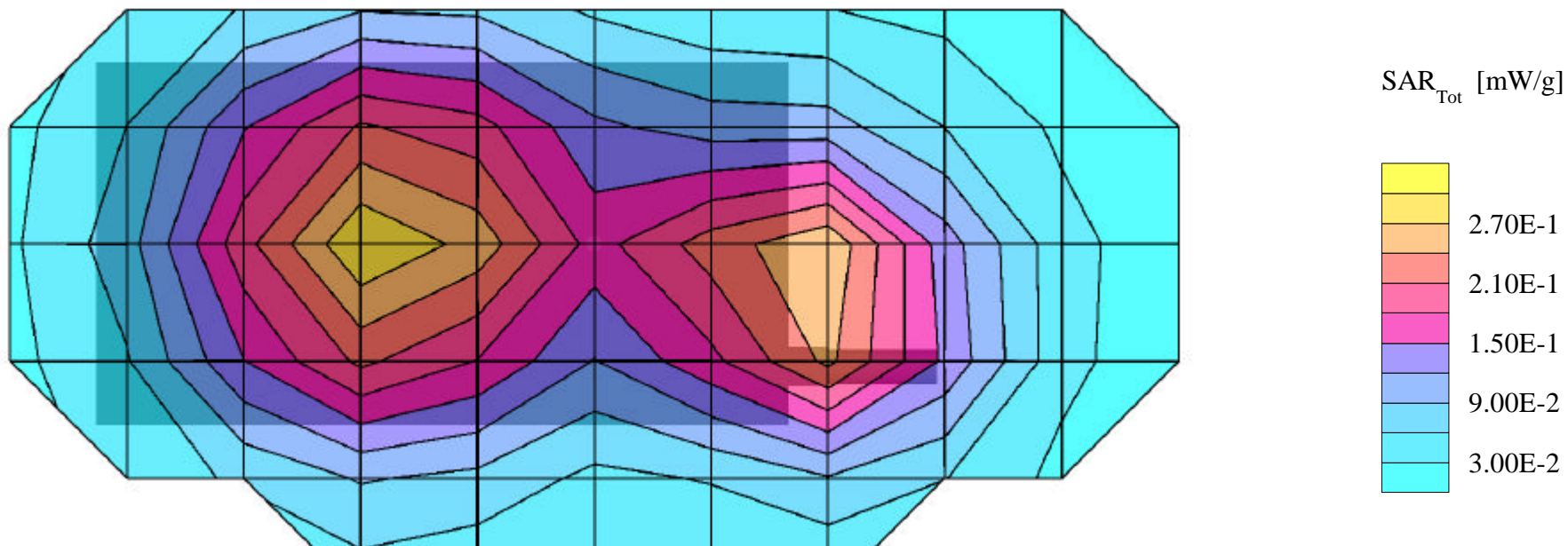
**SAR (1g): 0.293 mW/g, SAR (10g): 0.214 mW/g**

SYMBOL PDA Terminal w/Integrated CDPD Radio Modem; Model: PPT2833

FM Mode, Ch.0799 [848.97MHz]

Conducted Power = 26.8dBm; Spacing = 2.5cm from back of PDA to flat phantom, w/Holster

Test Date -- 08/23/2001



# SYMBOL FCC ID:H9PPPT2833 -- FM [CDPD] Hand SAR

Generic Twin Phantom; Flat Section; Probe: ET3DV6 - SN1560 -- Probe Cal Date 20/02/01

Med. Parameters 835 MHz Muscle:  $\sigma = 0.96$  mho/m  $\epsilon_r = 55.5$   $\rho = 1.00$  g/cm<sup>3</sup>; Antenna Position -- Out; Crest Factor 1.0

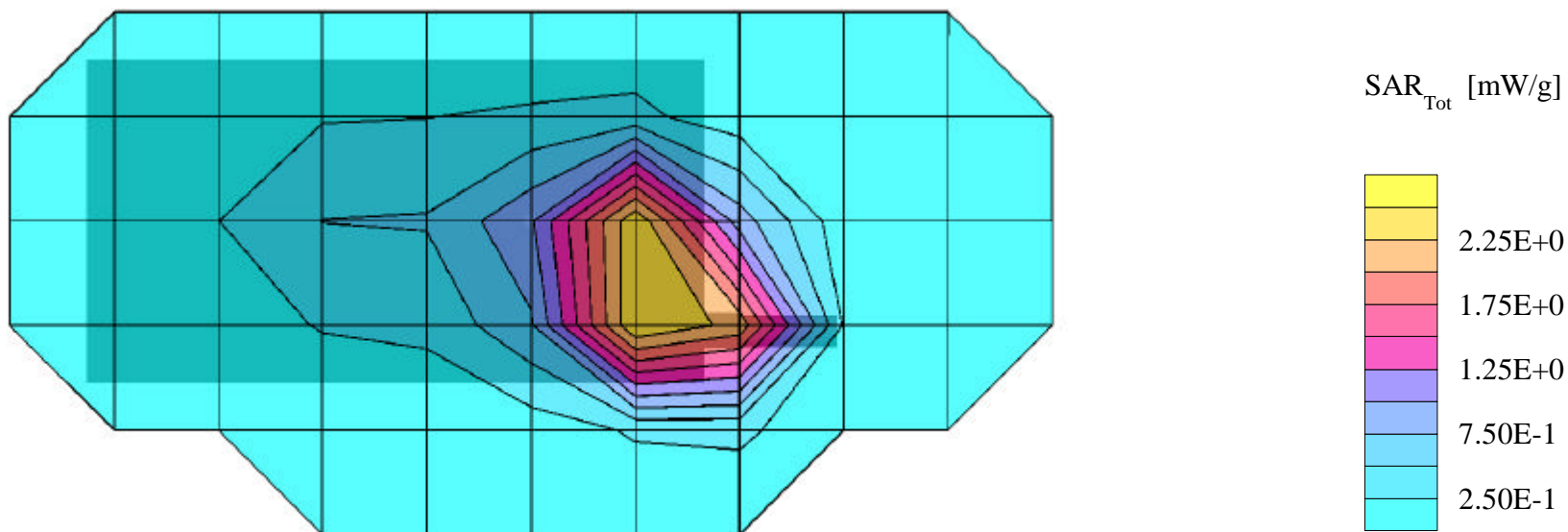
SAR (1g): 3.42 mW/g, **SAR (10g): 2.17 mW/g**

SYMBOL PDA Terminal w/Integrated CDPD Radio Modem; Model: PPT2833

FM Mode, Ch.0991 [824.04MHz]

Conducted Power = 26.8dBm; Spacing = touching back of PDA to flat phantom

Test Date -- 08/23/2000



# SYMBOL FCC ID:H9PPPT2833 -- FM [CDPD] Hand SAR

Generic Twin Phantom; Flat Section; Probe: ET3DV6 - SN1560 -- Probe Cal Date 20/02/01

Med. Parameters 835 MHz Muscle:  $\sigma = 0.96$  mho/m  $\epsilon_r = 55.5$   $\rho = 1.00$  g/cm<sup>3</sup>; Antenna Position -- Out; Crest Factor 1.0

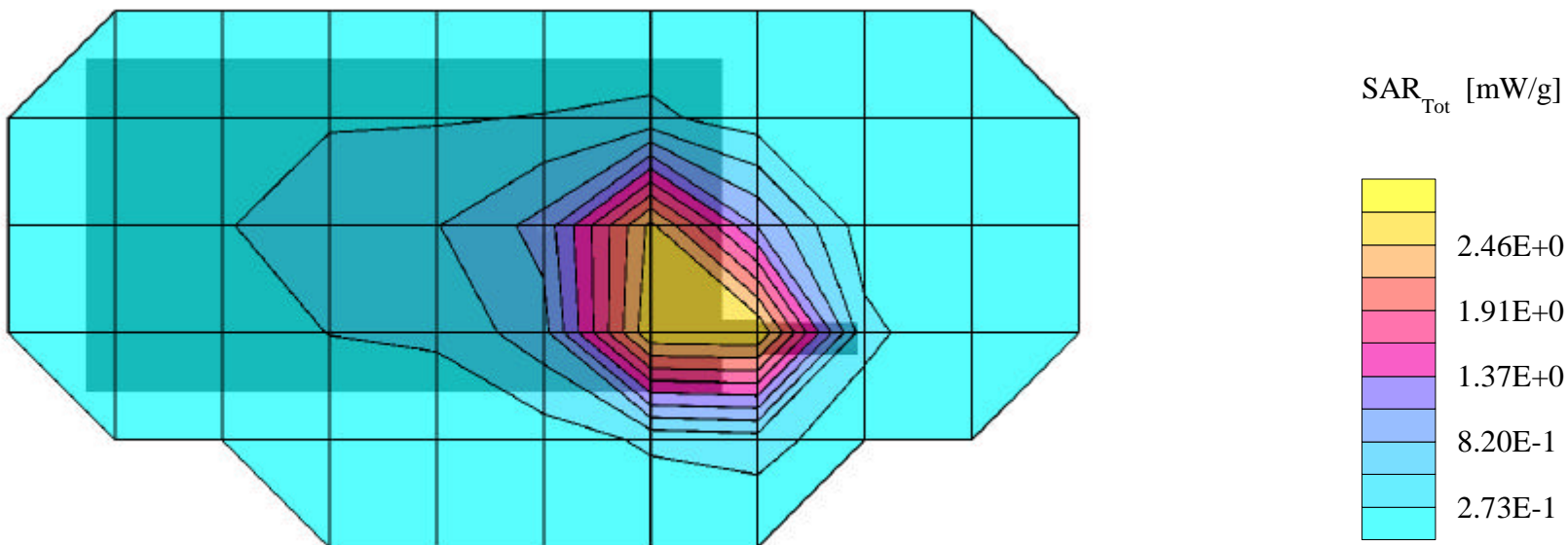
SAR (1g): 3.84 mW/g, **SAR (10g): 2.41 mW/g**

SYMBOL PDA Terminal w/Integrated CDPD Radio Modem; Model: PPT2833

FM Mode, Ch.0383 [836.49MHz]

Conducted Power = 26.8dBm; Spacing = touching back of PDA to flat phantom

Test Date -- 08/23/2000



# SYMBOL FCC ID:H9PPPT2833 -- FM [CDPD] Hand SAR

Generic Twin Phantom; Flat Section; Probe: ET3DV6 - SN1560 -- Probe Cal Date 20/02/01

Med. Parameters 835 MHz Muscle:  $\sigma = 0.96$  mho/m  $\epsilon_r = 55.5$   $\rho = 1.00$  g/cm<sup>3</sup>; Antenna Position -- Out; Crest Factor 1.0

SAR (1g): 3.58 mW/g, SAR (10g): **2.28 mW/g**

SYMBOL PDA Terminal w/Integrated CDPD Radio Modem; Model: PPT2833

FM Mode, Ch.0799 [848.97MHz]

Conducted Power = 26.8dBm; Spacing = touching back of PDA to flat phantom

Test Date -- 08/23/2000

