

SYMBOL FCC ID:H9PPPT2733 -- FM Body SAR

Generic Twin Phantom; Flat Section; Probe: ET3DV5 - SN1370 -- Probe Cal Date 02/00

Med. Parameters 835 MHz Muscle: $\sigma = 0.95$ mho/m $\epsilon_r = 56.2$ $\rho = 1.00$ g/cm³; Antenna Position -- Out; Crest Factor 1.0

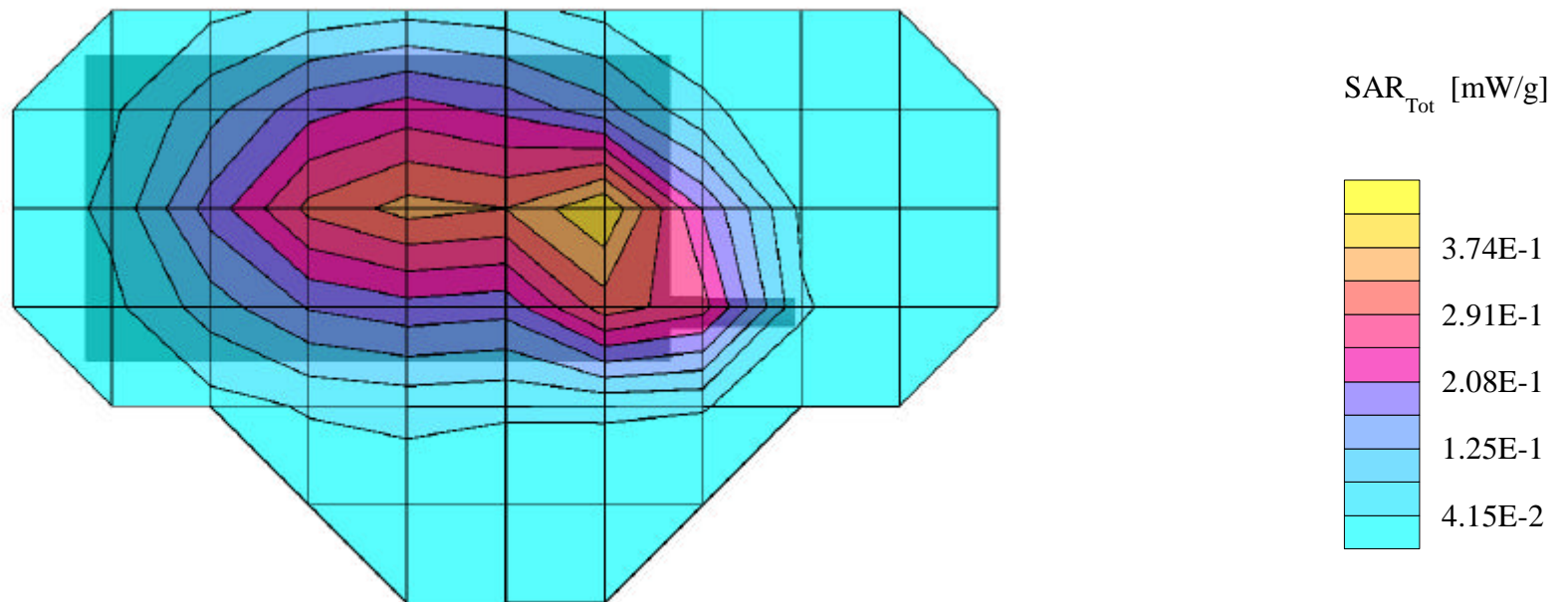
SAR (1g): 0.448 mW/g, SAR (10g): 0.301 mW/g

SYMBOL PDA Terminal w/Integrated CDPD Radio Modem; Model: PPT2733

FM Mode, Ch.0991 [824.04MHz]

Conducted Power = 27.8dBm; Spacing = 2.5cm from flat phantom to PDA w/Holster

Test Date -- 06/29/2000



SYMBOL FCC ID:H9PPPT2733 -- FM Body SAR

Generic Twin Phantom; Flat Section; Probe: ET3DV5 - SN1370 -- Probe Cal Date 02/00

Med. Parameters 835 MHz Muscle: $\sigma = 0.95$ mho/m $\epsilon_r = 56.2$ $\rho = 1.00$ g/cm³; Antenna Position -- Out; Crest Factor 1.0

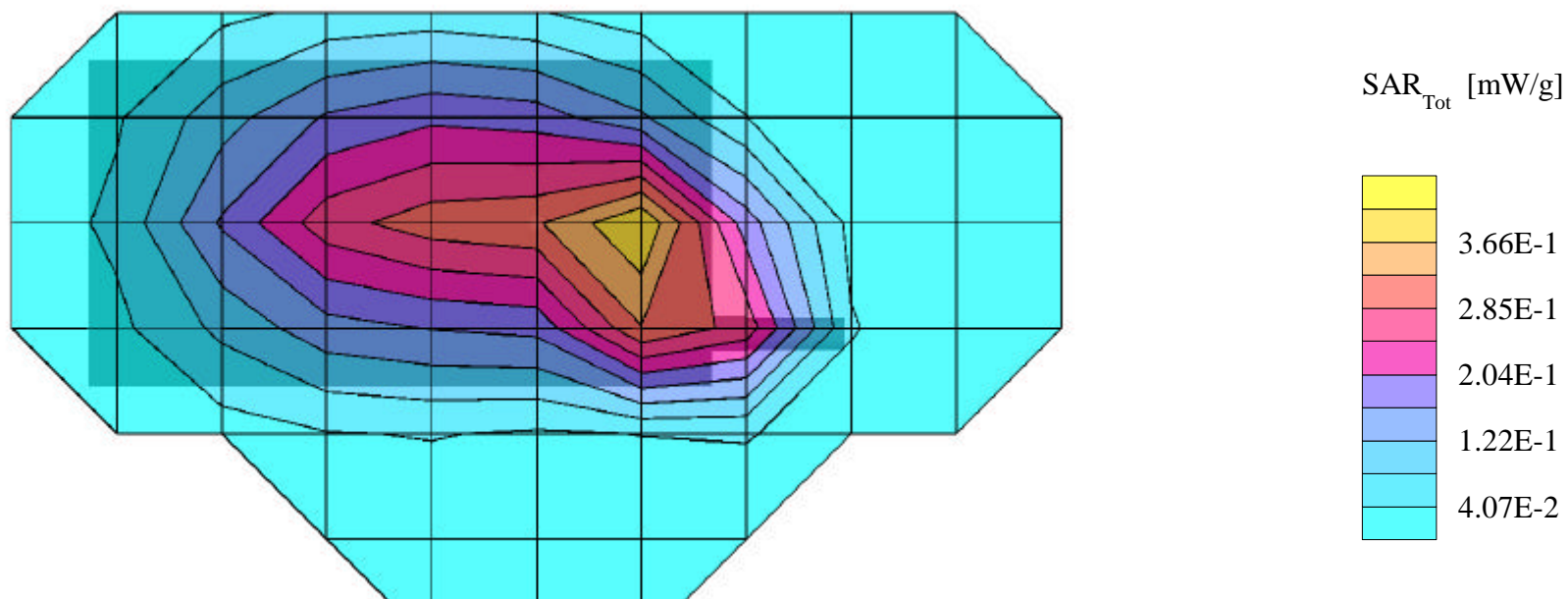
SAR (1g): 0.447 mW/g, SAR (10g): 0.297 mW/g

SYMBOL PDA Terminal w/Integrated CDPD Radio Modem; Model: PPT2733

FM Mode, Ch.0383 [836.49MHz]

Conducted Power = 27.8dBm; Spacing = 2.5cm from flat phantom to PDA w/Holster

Test Date -- 06/29/2000



SYMBOL FCC ID:H9PPPT2733 -- FM Body SAR

Generic Twin Phantom; Flat Section; Probe: ET3DV5 - SN1370 -- Probe Cal Date 02/00

Med. Parameters 835 MHz Muscle: $\sigma = 0.95$ mho/m $\epsilon_r = 56.2$ $\rho = 1.00$ g/cm³; Antenna Position -- Out; Crest Factor 1.0

SAR (1g): 0.426 mW/g, SAR (10g): 0.286 mW/g

SYMBOL PDA Terminal w/Integrated CDPD Radio Modem; Model: PPT2733

FM Mode, Ch.0799 [848.97MHz]

Conducted Power = 27.8dBm; Spacing = 2.5cm from flat phantom to PDA w/Holster

Test Date -- 06/29/2000

