

# SYMBOL FCC ID:H9PPPT2733 -- FM Hand SAR

Generic Twin Phantom; Flat Section; Probe: ET3DV5 - SN1370 -- Probe Cal Date 02/00

Med. Parameters 835 MHz Muscle:  $\sigma = 0.95$  mho/m  $\epsilon_r = 56.2$   $\rho = 1.00$  g/cm<sup>3</sup>; Antenna Position -- Out; Crest Factor 1.0

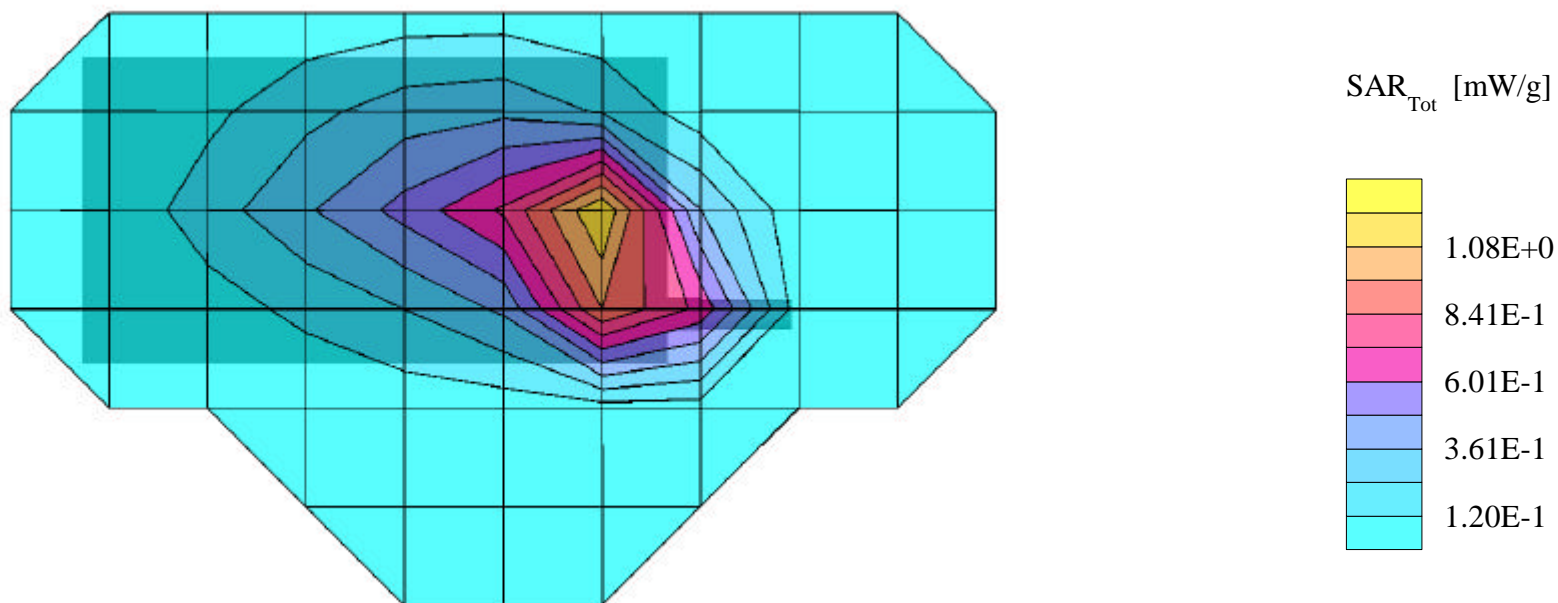
SAR (1g): 1.47 mW/g, **SAR (10g): 0.921 mW/g**

SYMBOL PDA Terminal w/Integrated CDPD Radio Modem; Model: PPT2733

FM Mode, Ch.0991[824.04MHz]

Conducted Power = 27.8dBm; Spacing = touching flat phantom

Test Date -- 06/29/2000



# SYMBOL FCC ID:H9PPPT2733 -- FM Hand SAR

Generic Twin Phantom; Flat Section; Probe: ET3DV5 - SN1370 -- Probe Cal Date 02/00

Med. Parameters 835 MHz Muscle:  $\sigma = 0.95$  mho/m  $\epsilon_r = 56.2$   $\rho = 1.00$  g/cm<sup>3</sup>; Antenna Position -- Out; Crest Factor 1.0

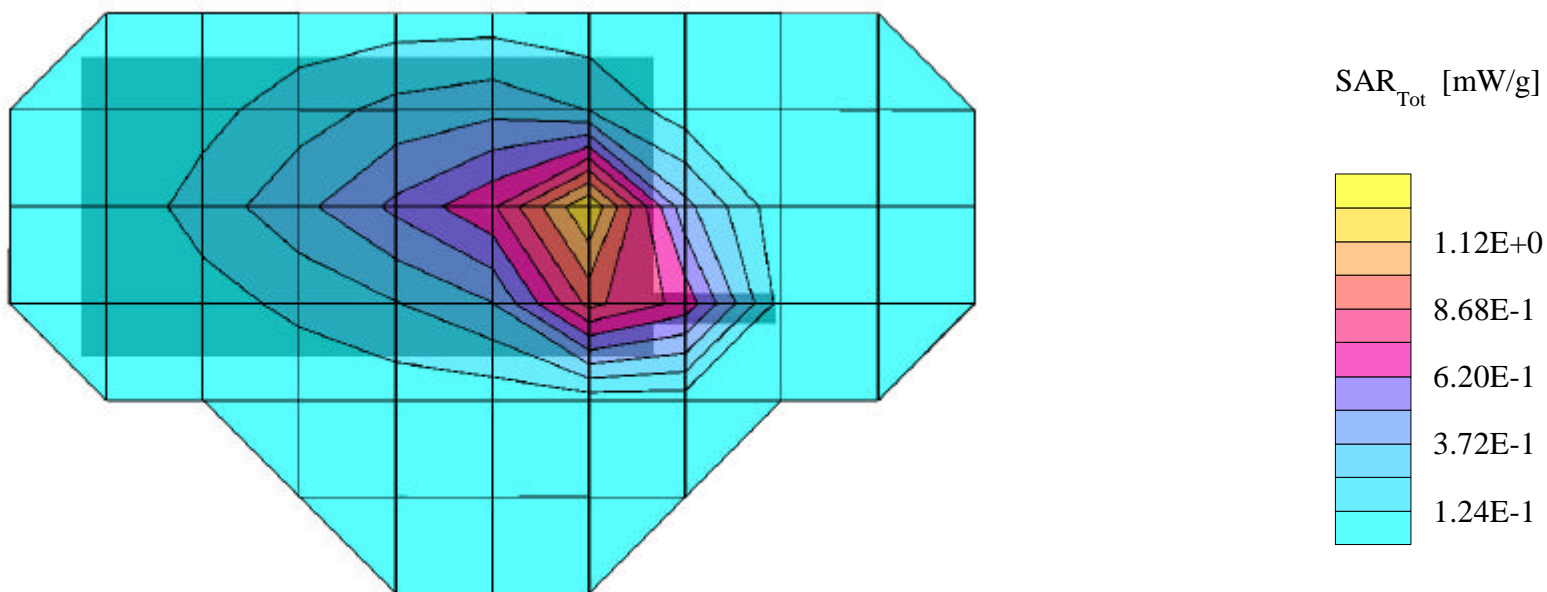
SAR (1g): 1.47 mW/g, **SAR (10g): 0.915 mW/g**

SYMBOL PDA Terminal w/Integrated CDPD Radio Modem; Model: PPT2733

FM Mode, Ch.0383 [836.49MHz]

Conducted Power = 27.8dBm; Spacing = touching flat phantom

Test Date -- 06/29/2000



# SYMBOL FCC ID:H9PPPT2733 -- FM Hand SAR

Generic Twin Phantom; Flat Section; Probe: ET3DV5 - SN1370 -- Probe Cal Date 02/00

Med. Parameters 835 MHz Muscle:  $\sigma = 0.95$  mho/m  $\epsilon_r = 56.2$   $\rho = 1.00$  g/cm<sup>3</sup>; Antenna Position -- Out; Crest Factor 1.0

SAR (1g): 1.43 mW/g, **SAR (10g): 0.888 mW/g**

SYMBOL PDA Terminal w/Integrated CDPD Radio Modem; Model: PPT2733

FM Mode, Ch.0799 [848.97MHz]

Conducted Power = 27.8dBm; Spacing = touching flat phantom

Test Date -- 06/29/2000

