

# SYMBOL Technologies FCC ID: H9PPDT81C6 2.4GHz. Body SAR

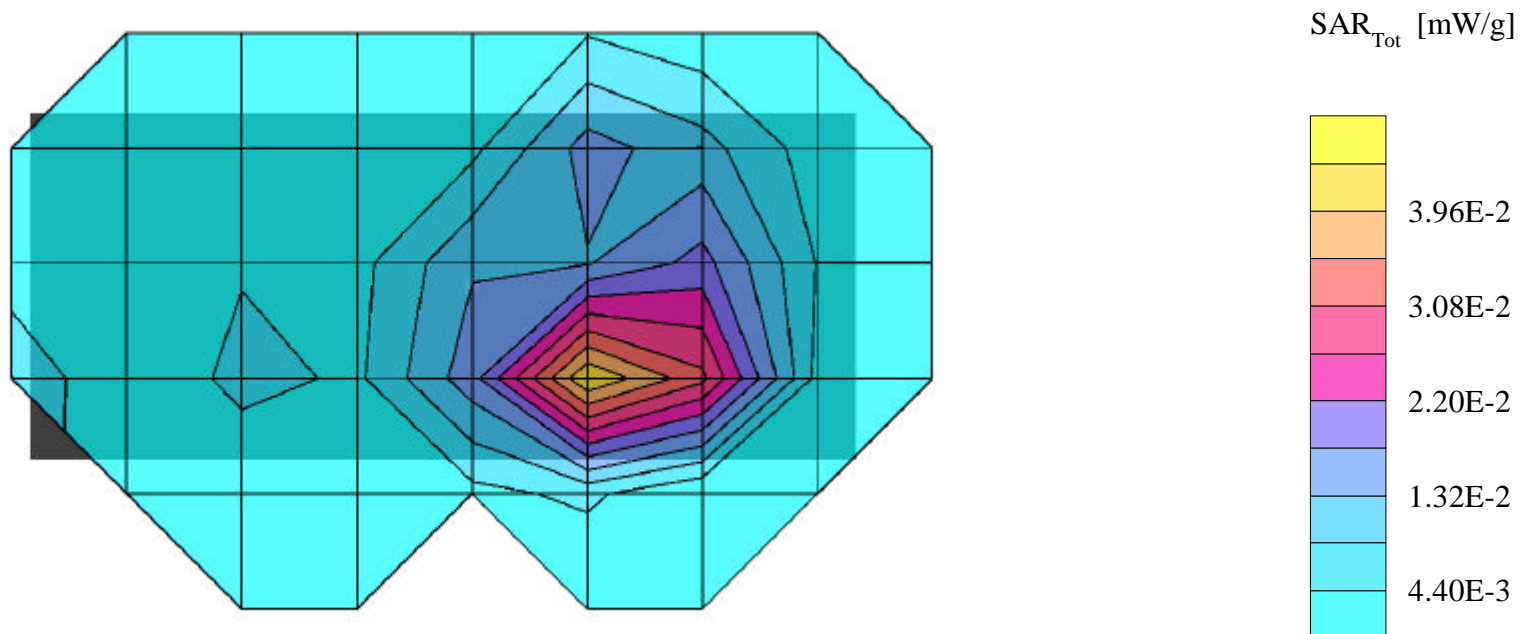
SAM Phantom; Flat Section; Probe:ET3DV6 - SN1677; ConvF(4.00,4.00,4.00)

Med. Parameters 2450 MHz Muscle:  $\sigma = 1.97$  mho/m  $\epsilon_r = 52.6$   $\rho = 1.00$  g/cm<sup>3</sup>; Antenna Position -- Out; Crest Factor 1.0

**SAR (1g): 0.0727 mW/g**, SAR (10g): 0.0254 mW/g

SYMBOL 2.4GHz. Pocket PC Model: PDT81C6

Low Channel: [2412MHz] ; Standard Battery; Ambient Temp. = 22.4°C / Meas. Tissue Temp. = 22.2°C  
Radiated Power = 20.0 dbm; Spacing = Touch LCD side of EUT to flat phantom, No Holster/No BeltClip  
Test Date -- 07/02/2002 [FCC/OET Bulletin 65 - Supplement C, July 2001]



# SYMBOL Technologies FCC ID: H9PPDT81C6 2.4GHz. Body SAR

SAM Phantom; Flat Section; Probe:ET3DV6 - SN1677; ConvF(4.00,4.00,4.00)

Med. Parameters 2450 MHz Muscle:  $\sigma = 1.97$  mho/m  $\epsilon_r = 52.6$   $\rho = 1.00$  g/cm<sup>3</sup>; Antenna Position -- Out; Crest Factor 1.0

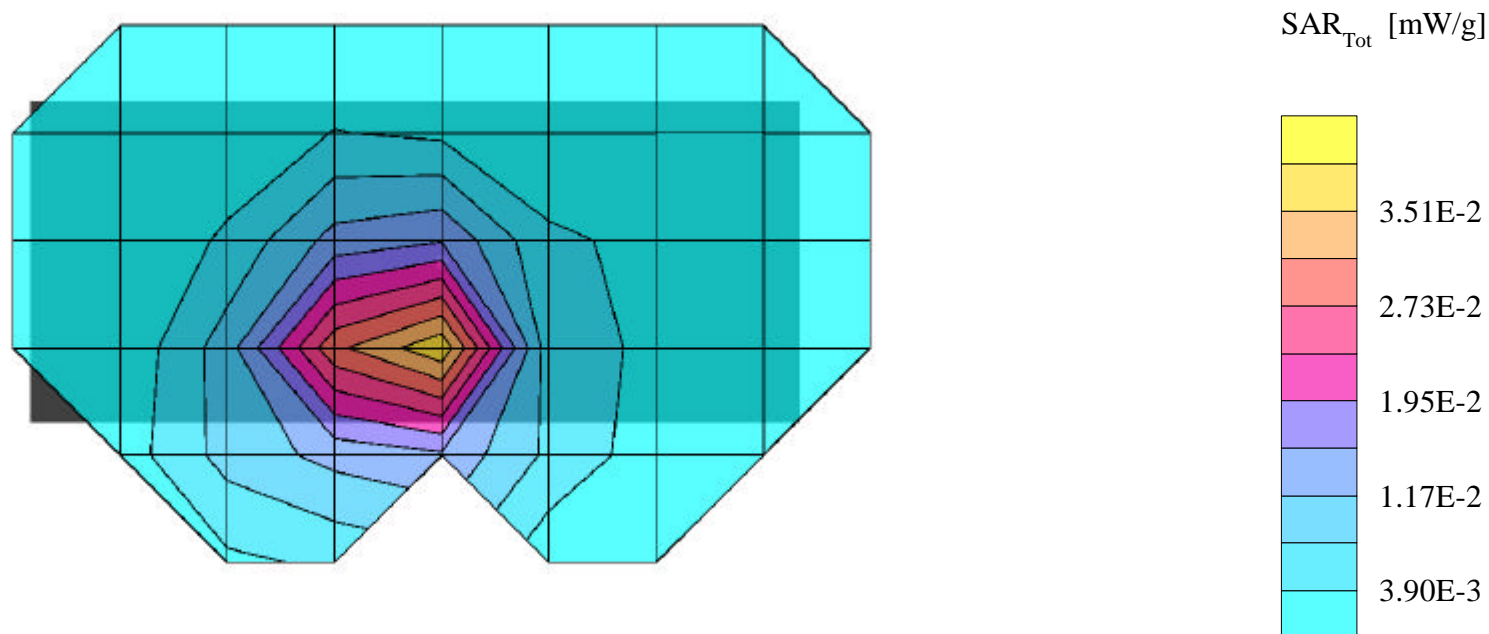
**SAR (1g): 0.0724 mW/g, SAR (10g): 0.0274 mW/g**

SYMBOL 2.4GHz. Pocket PC Model: PDT81C6

Mid Channel, [2437MHz] ; Standard Battery; Ambient Temp. = 22.4°C / Meas. Tissue Temp. = 22.2°C

Radiated Power = 20.0 dbm; Spacing = Touch LCD side of EUT to flat phantom, No Holster/No BeltClip

Test Date -- 07/02/2002 [FCC/OET Bulletin 65 - Supplement C, July 2001]



# SYMBOL Technologies FCC ID: H9PPDT81C6 2.4GHz. Body SAR

SAM Phantom; Flat Section; Probe:ET3DV6 - SN1677; ConvF(4.00,4.00,4.00)

Med. Parameters 2450 MHz Muscle:  $\sigma = 1.97$  mho/m  $\epsilon_r = 52.6$   $\rho = 1.00$  g/cm<sup>3</sup>; Antenna Position -- Out; Crest Factor 1.0

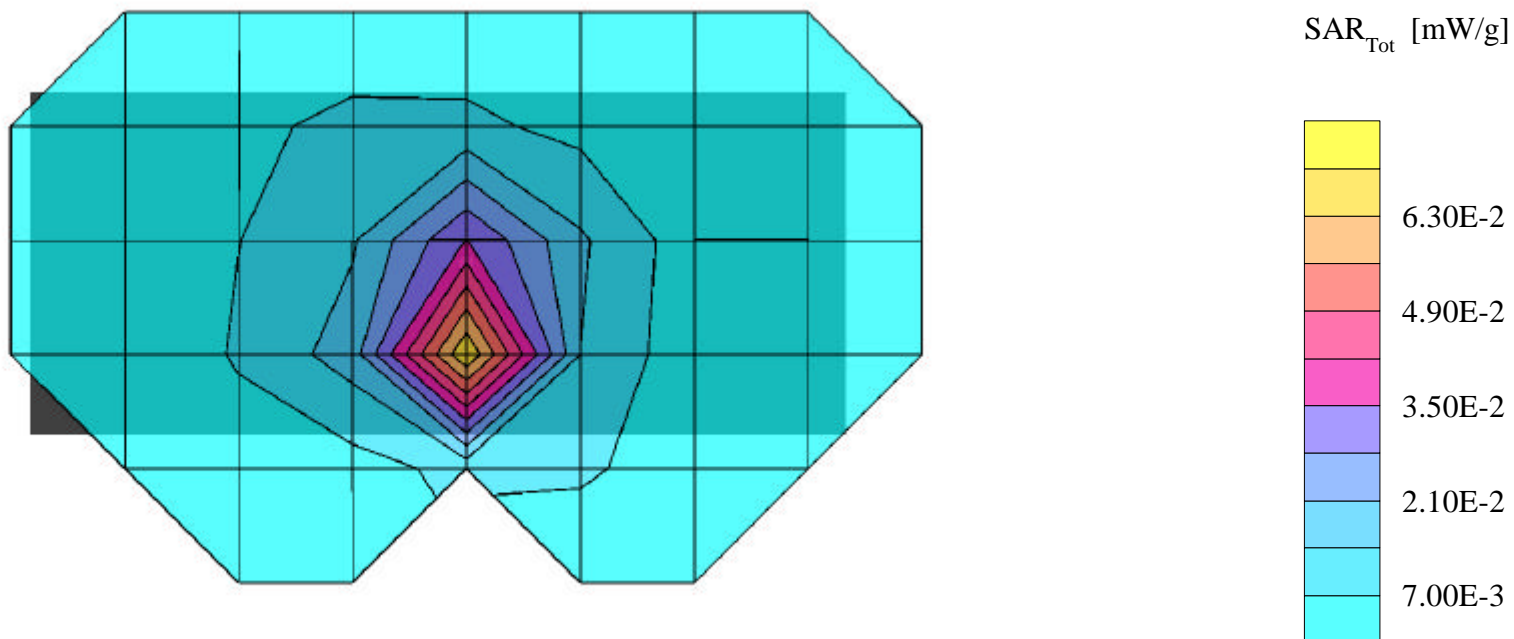
**SAR (1g): 0.0972 mW/g**, SAR (10g): 0.0339 mW/g

SYMBOL 2.4GHz. Pocket PC Model: PDT81C6

High Channel, [2462MHz] ; Standard Battery; Ambient Temp. = 22.4°C / Meas. Tissue Temp. = 22.2°C

Radiated Power = 20.0 dbm; Spacing = Touch LCD side of EUT to flat phantom, No Holster/No BeltClip

Test Date -- 07/02/2002 [FCC/OET Bulletin 65 - Supplement C, July 2001]



# SYMBOL Technologies FCC ID: H9PPDT81C6 2.4GHz. Body SAR

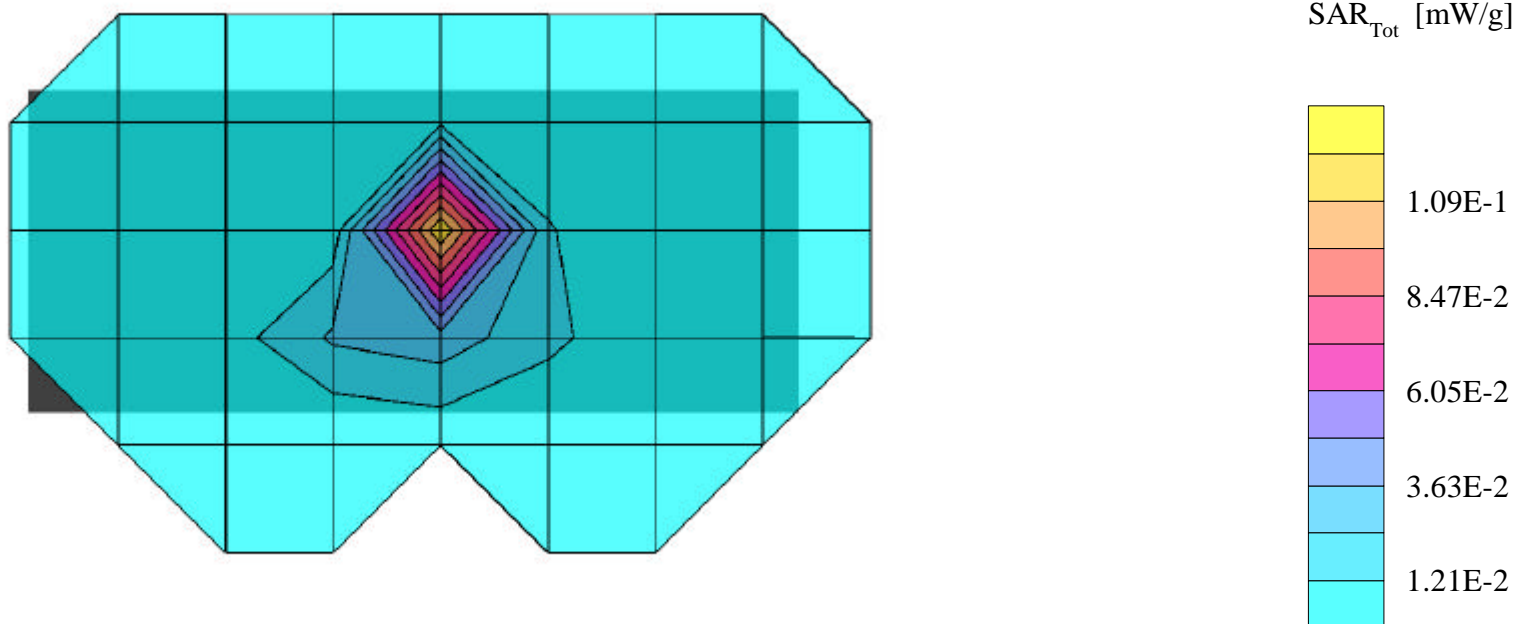
SAM Phantom; Flat Section; Probe:ET3DV6 - SN1677; ConvF(4.00,4.00,4.00)

Med. Parameters 2450 MHz Muscle:  $\sigma = 1.97$  mho/m  $\epsilon_r = 52.6$   $\rho = 1.00$  g/cm<sup>3</sup>; Antenna Position -- Out; Crest Factor 1.0

**SAR (1g): 0.131 mW/g, SAR (10g): 0.0483 mW/g**

SYMBOL 2.4GHz. Pocket PC Model: PDT81C6

Low Channel, [2412MHz] ; Standard Battery; Ambient Temp. = 22.2°C / Meas. Tissue Temp. = 22.1°C  
Radiated Power = 20.0 dbm; Spacing = Touch Back side of EUT to flat phantom, No Holster/No BeltClip  
Test Date -- 07/02/2002 [FCC/OET Bulletin 65 - Supplement C, July 2001]



# SYMBOL Technologies FCC ID: H9PPDT81C6 2.4GHz. Body SAR

SAM Phantom; Flat Section; Probe:ET3DV6 - SN1677; ConvF(4.00,4.00,4.00)

Med. Parameters 2450 MHz Muscle:  $\sigma = 1.97$  mho/m  $\epsilon_r = 52.6$   $\rho = 1.00$  g/cm<sup>3</sup>; Antenna Position -- Out; Crest Factor 1.0

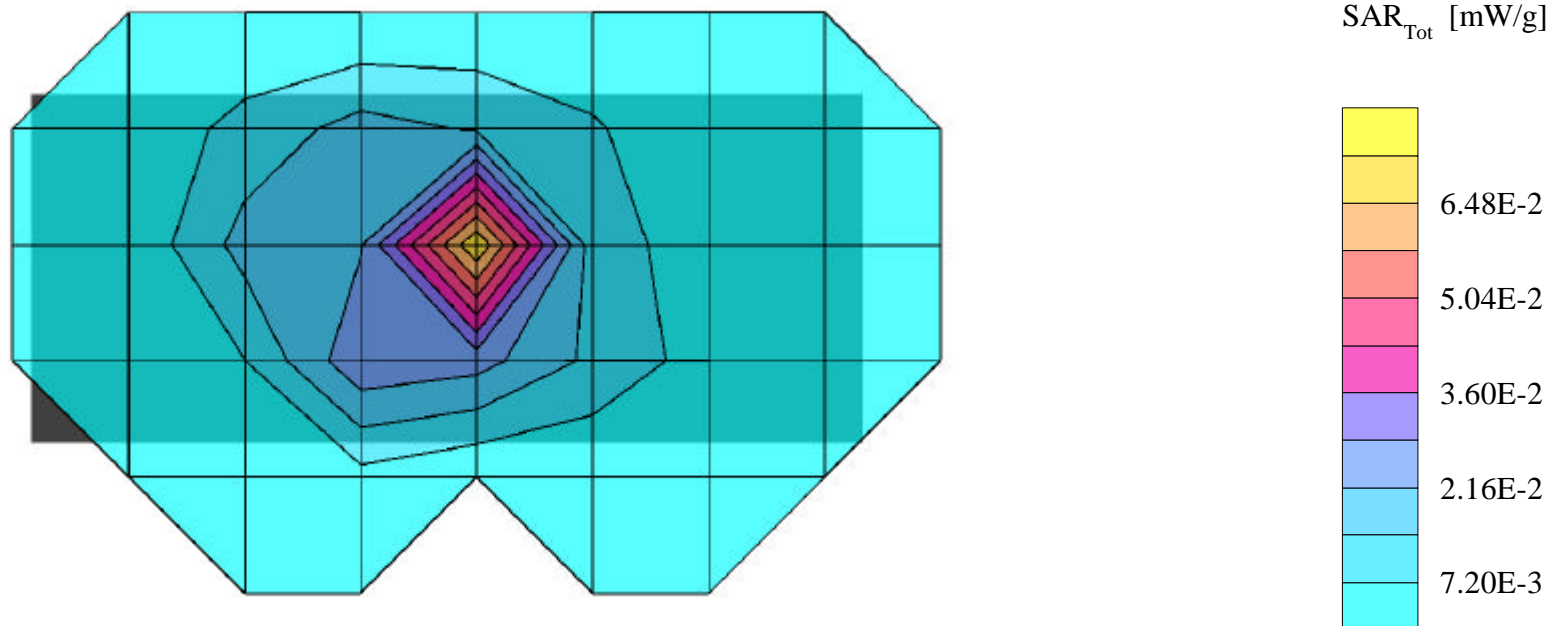
**SAR (1g): 0.151 mW/g, SAR (10g): 0.0600 mW/g**

SYMBOL 2.4GHz. Pocket PC Model: PDT81C6

Mid Channel, [2437MHz] ; Standard Battery; Ambient Temp. = 22.4°C / Meas. Tissue Temp. = 22.2°C

Radiated Power = 20.0 dbm; Spacing = Touch Back side of EUT to flat phantom, No Holster/No BeltClip

Test Date -- 07/02/2002 [FCC/OET Bulletin 65 - Supplement C, July 2001]



# SYMBOL Technologies FCC ID: H9PPDT81C6 2.4GHz. Body SAR

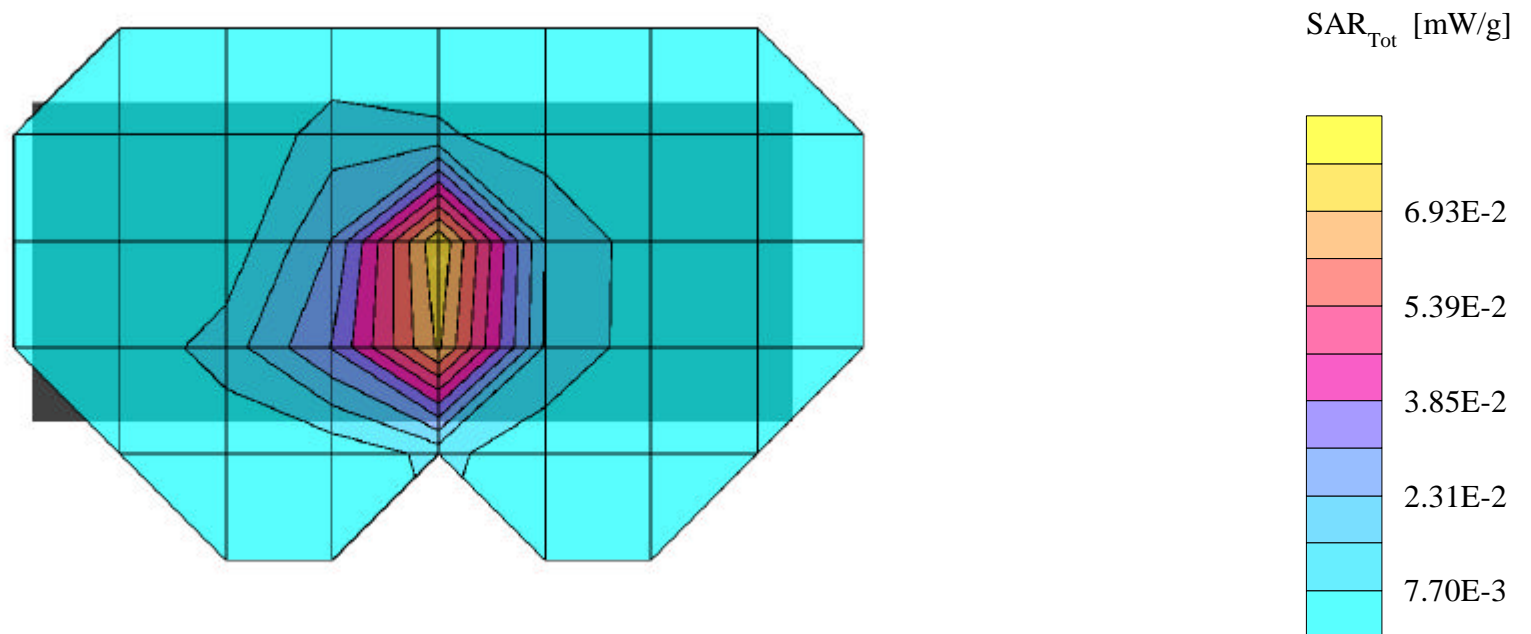
SAM Phantom; Flat Section; Probe:ET3DV6 - SN1677; ConvF(4.00,4.00,4.00)

Med. Parameters 2450 MHz Muscle:  $\sigma = 1.97$  mho/m  $\epsilon_r = 52.6$   $\rho = 1.00$  g/cm<sup>3</sup>; Antenna Position -- Out; Crest Factor 1.0

**SAR (1g): 0.134 mW/g**, SAR (10g): 0.0552 mW/g

SYMBOL 2.4GHz. Pocket PC Model: PDT81C6

High Channel, [2462MHz] ; Standard Battery; Ambient Temp. = 22.4°C / Meas. Tissue Temp. = 22.2°C  
Radiated Power = 20.0 dbm; Spacing = Touch Back side of EUT to flat phantom, No Holster/No BeltClip  
Test Date -- 07/02/2002 [FCC/OET Bulletin 65 - Supplement C, July 2001]



# SYMBOL FCC ID: H9PPDT81C6 -- 2.4GHz. Body SAR

SAM Phantom; Flat Section; Probe: ET3DV6 - SN1677; ConvF(4.00,4.00,4.00)

Med. Parameters 2450 MHz Muscle:  $\sigma = 1.97$  mho/m  $\epsilon_r = 52.6$   $\rho = 1.00$  g/cm<sup>3</sup>; Antenna Position -- Out; Crest Factor 8.0

SAR (1g): 0.151 mW/g, SAR (10g): 0.0600 mW/g

SYMBOL 2.4GHz. Pocket PC Model: PDT81C6

Mid Channel, [2437MHz]; Standard Battery; Ambient Temp. = 22.4°C / Meas. Tissue Temp. = 22.2°C

Radiated Power = 20.0dbm; Spacing = Touch Back side of EUT to flat phantom, No Holster/No BeltClip

Test Date -- 07/02/2002 [FCC/OET Bulletin 65 - Supplement C, July 2001]

