

# SYMBOL Tech. Inc. FCC ID: H9PPDT8137 -- 1900MHz. Body SAR

SAM Phantom; Flat Section; Probe:ET3DV6 - SN1677; ConvF(4.90,4.90,4.90)

Med. Parameters 1900MHz Muscle:  $\sigma = 1.51$  mho/m  $\epsilon_r = 54.2$   $\rho = 1.00$  g/cm<sup>3</sup>; Antenna Position -- Out; Crest Factor 8.0

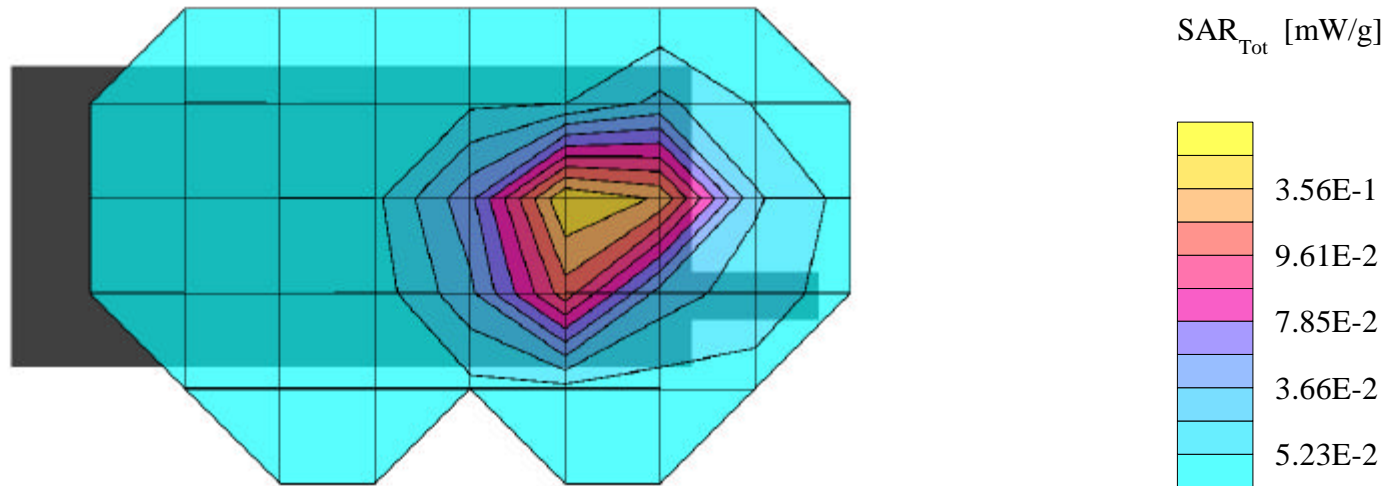
**SAR (1g): 0.146 mW/g, SAR (10g): 0.0901 mW/g**

SYMBOL 1900MHz. PCS-GSM Portable Data Terminal -- Model: PDT8137

PCS Mode; Channel 512 [1850.2MHz.]; Standard Battery; Ambient Temp. = 22.2°C / Meas. Tissue Temp. = 22.1°C

Conducted Power = 30.0 dBm; Spacing = 2.5cm. Back of EUT (Antenna side) to flat phantom, w/Hand Strap/Holster/Beltclip

Test Date -- 07-30-2002 [FCC/OET Bulletin 65 - Supplement C July 2001]



# SYMBOL Tech. Inc. FCC ID: H9PPDT8137 -- 1900MHz. Body SAR

SAM Phantom; Flat Section; Probe:ET3DV6 - SN1677; ConvF(4.90,4.90,4.90)

Med. Parameters 1900MHz Muscle:  $\sigma = 1.51$  mho/m  $\epsilon_r = 54.2$   $\rho = 1.00$  g/cm<sup>3</sup>; Antenna Position -- Out; Crest Factor 8.0

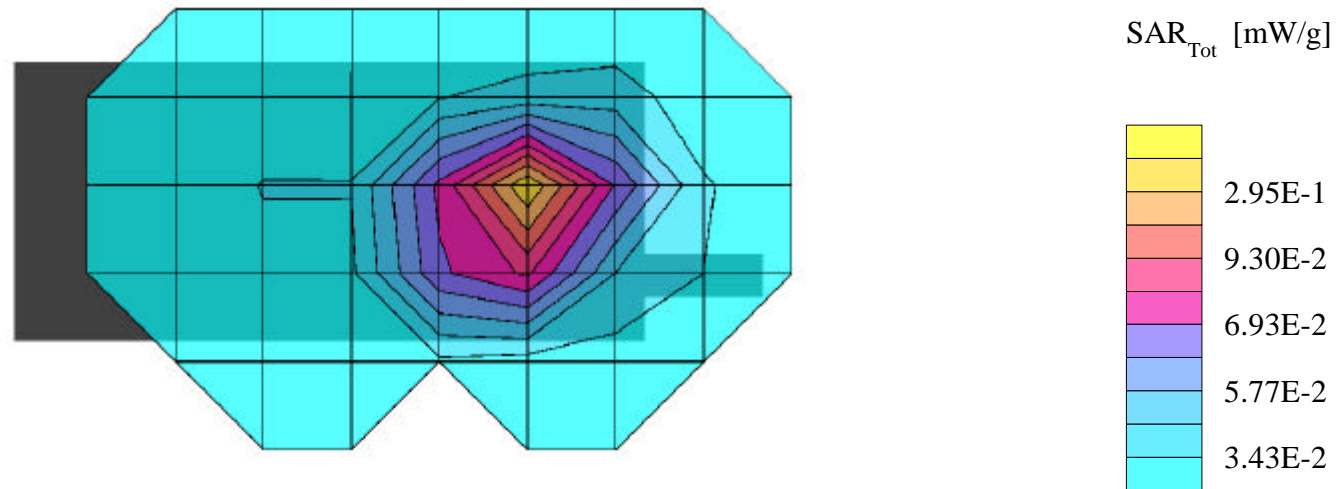
**SAR (1g): 0.159 mW/g, SAR (10g): 0.0917mW/g**

SYMBOL 1900MHz. PCS-GSM Portable Data Terminal -- Model: PDT8137

PCS Mode; Channel 661 [1880.0MHz.]; Standard Battery; Ambient Temp. = 22.2°C / Meas. Tissue Temp. = 22.1°C

Conducted Power = 30.0 dBm; Spacing = 2.5cm. Back of EUT (Antenna side) to flat phantom, w/Hand Strap/Holster/Beltclip

Test Date -- 07-30-2002 [FCC/OET Bulletin 65 - Supplement C, July 2001]



# SYMBOL Tech. Inc. FCC ID: H9PPDT8137 -- 1900MHz. Body SAR

SAM Phantom; Flat Section; Probe:ET3DV6 - SN1677; ConvF(4.90,4.90,4.90)

Med. Parameters 1900MHz Muscle:  $\sigma = 1.51$  mho/m  $\epsilon_r = 54.2$   $\rho = 1.00$  g/cm<sup>3</sup>; Antenna Position -- Out; Crest Factor 8.0

**SAR (1g): 0.161 mW/g, SAR (10g): 0.0938mW/g**

SYMBOL 1900MHz. PCS-GSM Portable Data Terminal -- Model: PDT8137

PCS Mode; Channel 810 [1909.8MHz.]; Standard Battery; Ambient Temp. = 22.2°C / Meas. Tissue Temp. = 22.1°C

Conducted Power = 30.0 dBm; Spacing = 2.5cm. Back of EUT (Antenna side) to flat phantom, w/Hand Strap/Holster/Beltclip

Test Date--07-30-2002 [FCC/OET Bulletin 65 - Supplement C, July 2001]

