

SYMBOL FCC ID: H9PPDT8133 -- FM [CDPD] Body SAR

Generic Twin Phantom; Flat Section; Probe: ET3DV6 - SN1560 -- Probe Cal Date 20/02/01

Med. Parameters 835 MHz Muscle: $\sigma = 0.97$ mho/m $\epsilon_r = 55.2$ $\rho = 1.00$ g/cm³; Antenna Position -- Out; Crest Factor 1.0

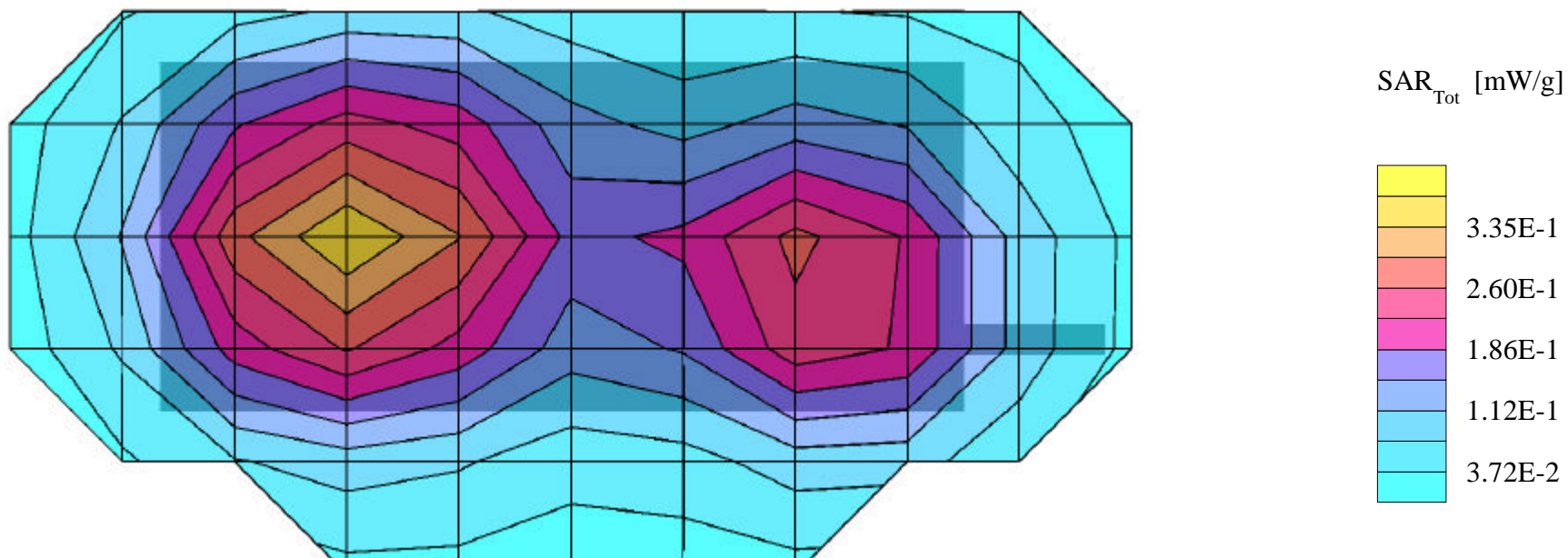
SAR (1g): 0.400 mW/g, SAR (10g): 0.256 mW/g

SYMBOL PDA Terminal w/Integrated CDPD Radio Modem; Model: PDT8133

FM Mode, Low Channel [824.04MHz]

Conducted Power = 0.600Watts; Spacing = 2.5cm from back of PDA to flat phantom, w/Holster

Test Date -- 10/15/2001



SYMBOL FCC ID: H9PPDT8133 -- FM [CDPD] Body SAR

Generic Twin Phantom; Flat Section; Probe: ET3DV6 - SN1560 -- Probe Cal Date 20/02/01

Med. Parameters 835 MHz Muscle: $\sigma = 0.97$ mho/m $\epsilon_r = 55.2$ $\rho = 1.00$ g/cm³; Antenna Position -- Out; Crest Factor 1.0

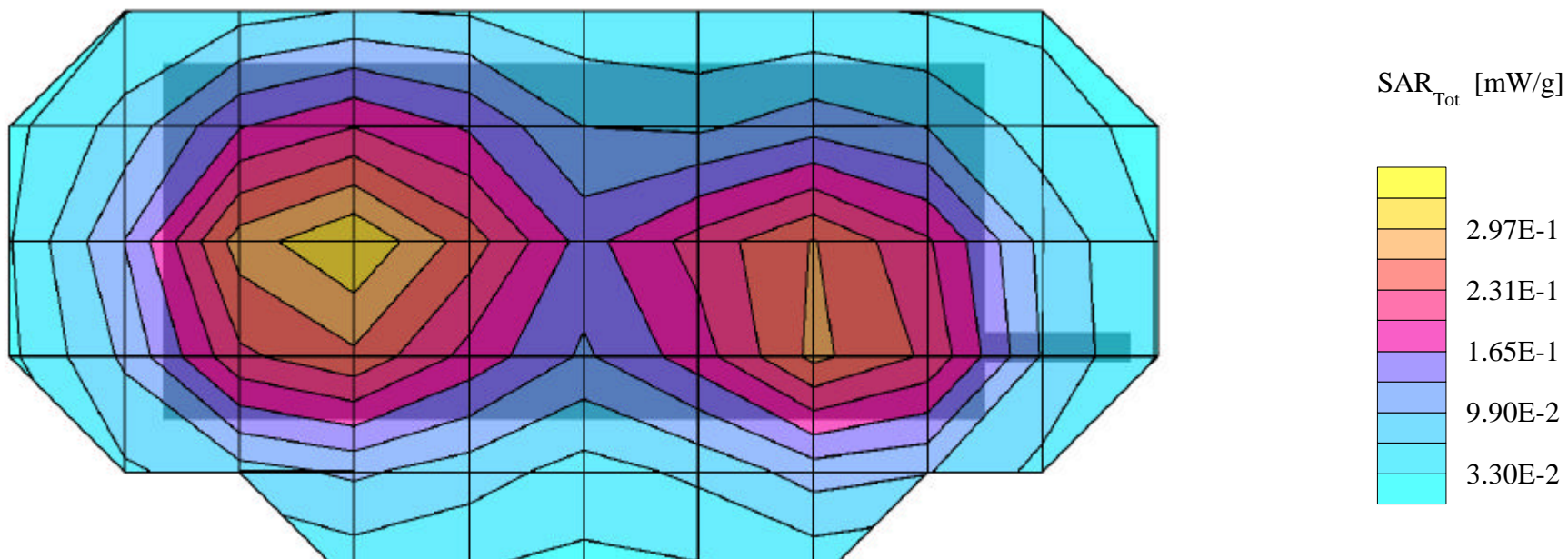
SAR (1g): 0.331 mW/g, SAR (10g): 0.253 mW/g

SYMBOL PDA Terminal w/Integrated CDPD Radio Modem; Model: PDT8133

FM Mode, Mid Channel [835.02MHz]

Conducted Power = 0.600Watts; Spacing = 2.5cm from back of PDA to flat phantom, w/Holster

Test Date -- 10/15/2001



SYMBOL FCC ID: H9PPDT8133 -- FM [CDPD] Body SAR

Generic Twin Phantom; Flat Section; Probe: ET3DV6 - SN1560 -- Probe Cal Date 20/02/01

Med. Parameters 835 MHz Muscle: $\sigma = 0.97$ mho/m $\epsilon_r = 55.2$ $\rho = 1.00$ g/cm³; Antenna Position -- Out; Crest Factor 1.0

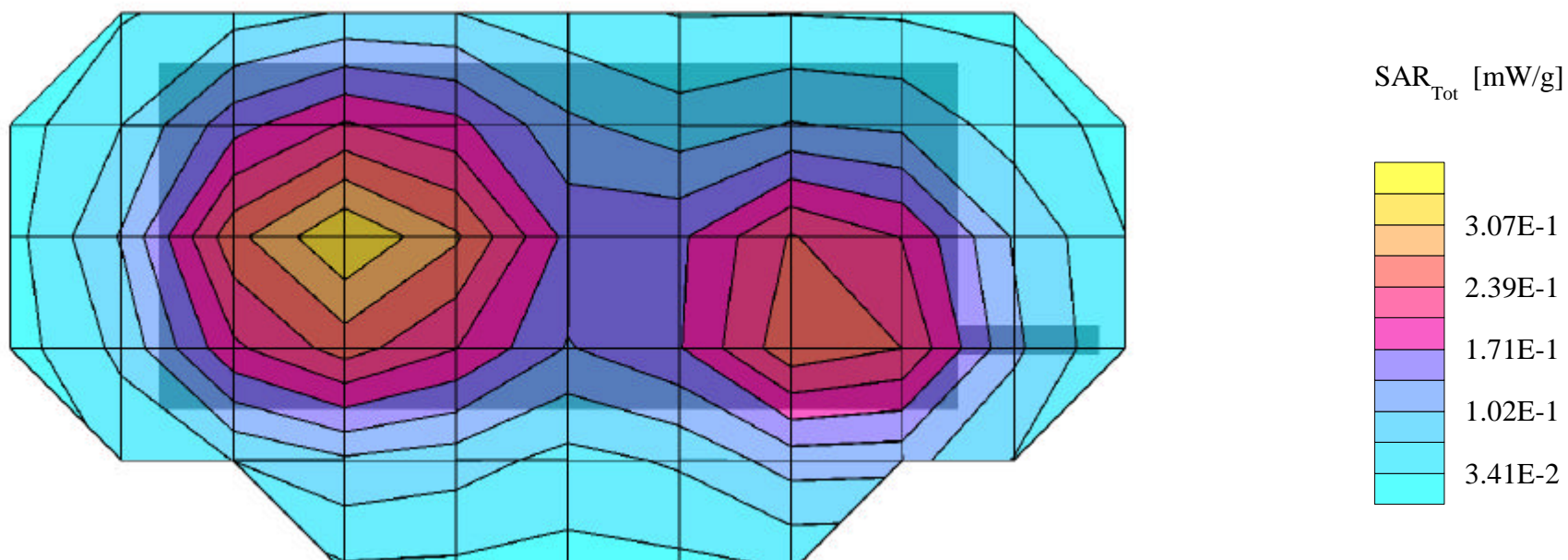
SAR (1g): 0.337 mW/g, SAR (10g): 0.257 mW/g

SYMBOL PDA Terminal w/Integrated CDPD Radio Modem; Model: PDT8133

FM Mode, High Channel [848.97MHz]

Conducted Power = 0.600Watts; Spacing = 2.5cm from back of PDA to flat phantom, w/Holster

Test Date -- 10/15/2001



SYMBOL FCC ID: H9PPDT8133 -- FM [CDPD] Hand SAR

Generic Twin Phantom; Flat Section; Probe: ET3DV6 - SN1560 -- Probe Cal Date 20/02/01

Med. Parameters 835 MHz Muscle: $\sigma = 0.97$ mho/m $\epsilon_r = 55.2$ $\rho = 1.00$ g/cm³; Antenna Position -- Out; Crest Factor 1.0

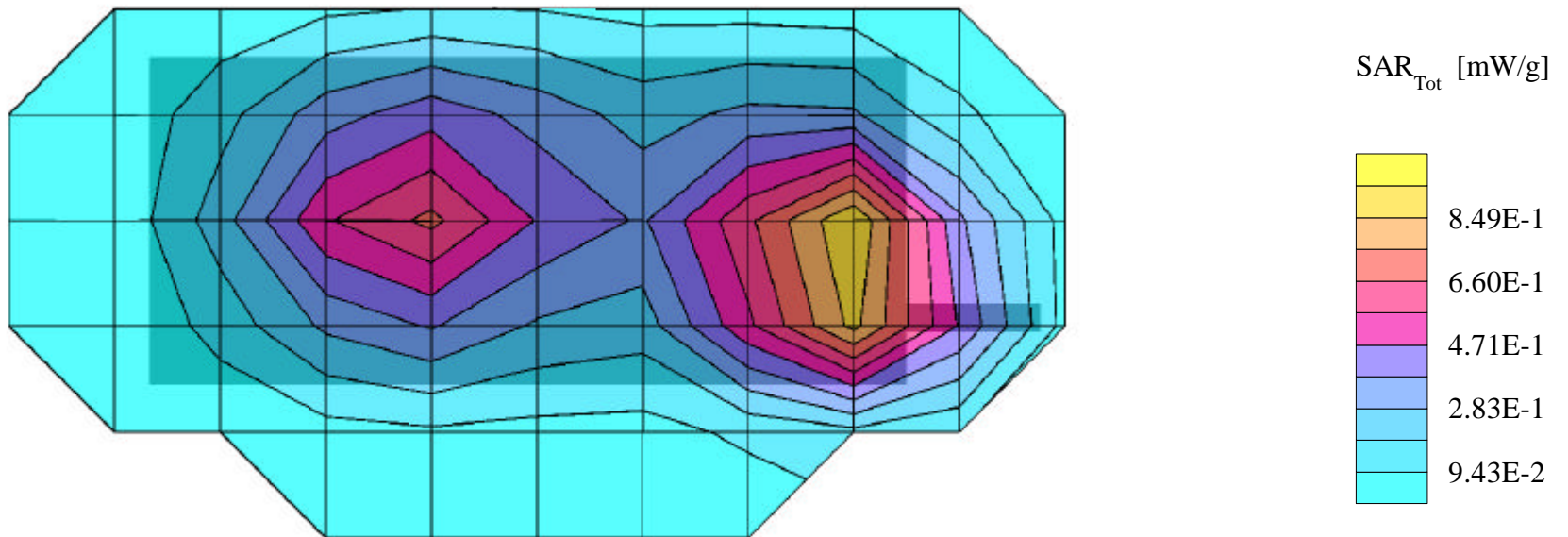
SAR (1g): 1.09 mW/g, **SAR (10g): 0.773 mW/g**

SYMBOL PDA Terminal w/Integrated CDPD Radio Modem; Model: PDT8133

FM Mode, Low Channel [824.04MHz]

Conducted Power = 0.600Watts; Spacing = back of EUT (antenna side) touching flat phantom

Test Date -- 10/15/2000



SYMBOL FCC ID: H9PPDT8133 -- FM [CDPD] Hand SAR

Generic Twin Phantom; Flat Section; Probe: ET3DV6 - SN1560 -- Probe Cal Date 20/02/01

Med. Parameters 835 MHz Muscle: $\sigma = 0.97$ mho/m $\epsilon_r = 55.2$ $\rho = 1.00$ g/cm³; Antenna Position -- Out; Crest Factor 1.0

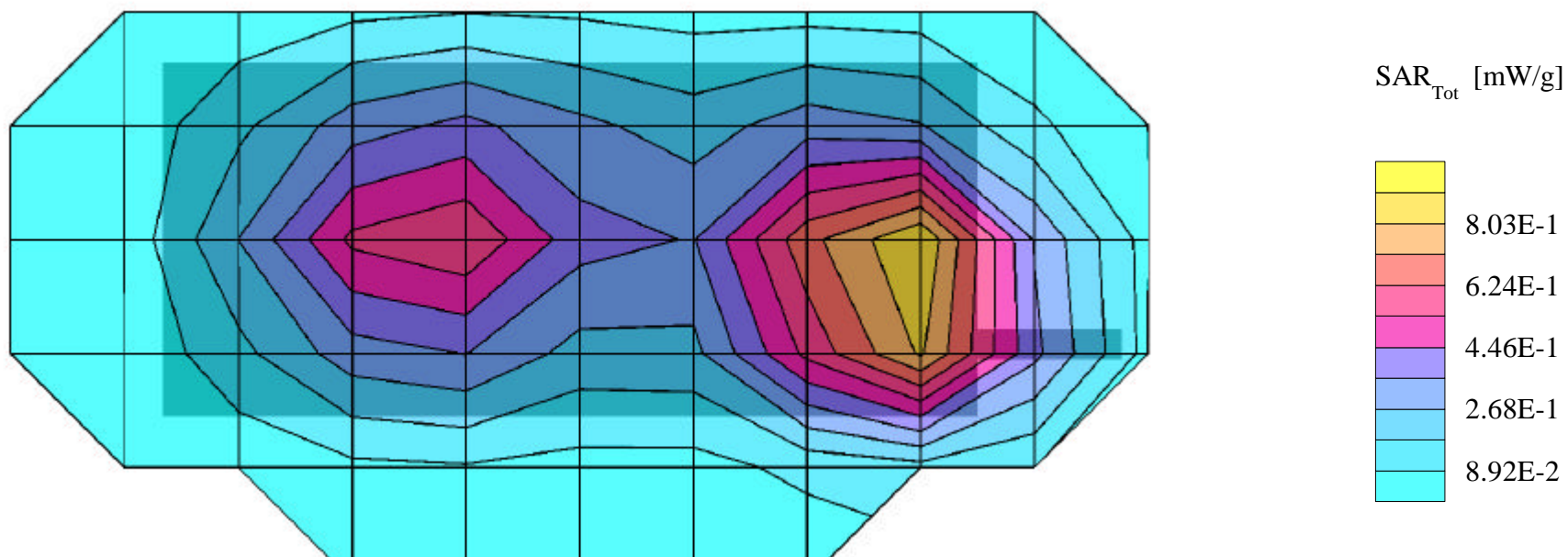
SAR (1g): 1.05 mW/g, **SAR (10g): 0.745 mW/g**

SYMBOL PDA Terminal w/Integrated CDPD Radio Modem; Model: PDT8133

FM Mode, Mid Channel [835.02MHz]

Conducted Power = 0.600Watts; Spacing = back of EUT (antenna side) touching flat phantom

Test Date -- 10/15/2000



SYMBOL FCC ID: H9PPDT8133 -- FM [CDPD] Hand SAR

Generic Twin Phantom; Flat Section; Probe: ET3DV6 - SN1560 -- Probe Cal Date 20/02/01

Med. Parameters 835 MHz Muscle: $\sigma = 0.97$ mho/m $\epsilon_r = 55.2$ $\rho = 1.00$ g/cm³; Antenna Position -- Out; Crest Factor 1.0

SAR (1g): 1.05 mW/g, **SAR (10g): 0.745 mW/g**

SYMBOL PDA Terminal w/Integrated CDPD Radio Modem; Model: PDT8133

FM Mode, High Channel [848.97MHz]

Conducted Power = 0.600Watts; Spacing = back of EUT (antenna side) touching flat phantom

Test Date -- 10/15/2000

