

Symbol, Wireless Handset, Model PDT 7532

Generic Twin Phantom; Flat Section; Position: (90°,90°); Frequency: 900 MHz

Probe: ET3DV5 - SN1328; ConvF(5.50,5.50,5.50); Crest factor: 1.0; Muscle 850 MHz: $\sigma = 1.14 \text{ mho/m}$ $\epsilon_r = 57.1$ $\rho = 1.00 \text{ g/cm}^3$

Cubes (2): SAR (1g): $0.227 \text{ mW/g} \pm 0.03 \text{ dB}$, SAR (10g): $0.166 \text{ mW/g} \pm 0.04 \text{ dB}$, (Worst-case extrapolation)

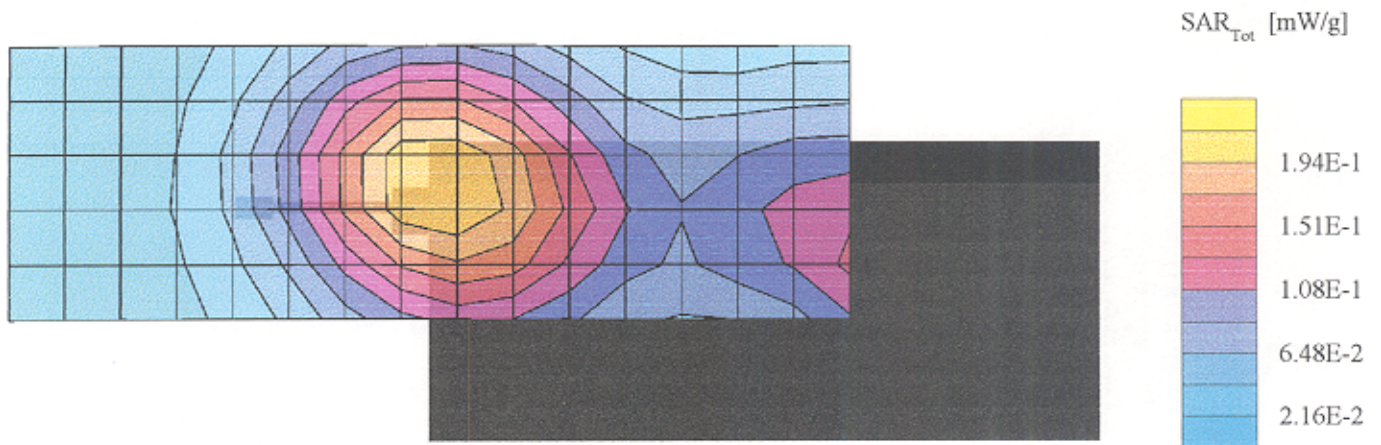
Coarse: $D_x = 18.0$, $D_y = 18.0$, $D_z = 10.0$; Powerdrift: -0.30 dB

Symbol Technologies Inc., Wireless Hand Scanner

Model Diamond PDT7532-ROX23M00, S/N ALP06157

CDPD Modulation, Maximum Transmit Power 28 dbm

Body Positioning, Channel 105 (827.6 MHz)



Symbol, Wireless Handset, Model PDT 7532

Generic Twin Phantom; Flat Section; Position: (90°,90°); Frequency: 900 MHz

Probe: ET3DV5 - SN1328; ConvF(5.50,5.50,5.50); Crest factor: 1.0; Muscle 850 MHz: $\sigma = 1.09 \text{ mho/m}$ $\epsilon_r = 56.1$ $\rho = 1.00 \text{ g/cm}^3$

Cubes (2): SAR (1g): $0.227 \text{ mW/g} \pm 0.13 \text{ dB}$, SAR (10g): $0.166 \text{ mW/g} \pm 0.11 \text{ dB}$, (Worst-case extrapolation)

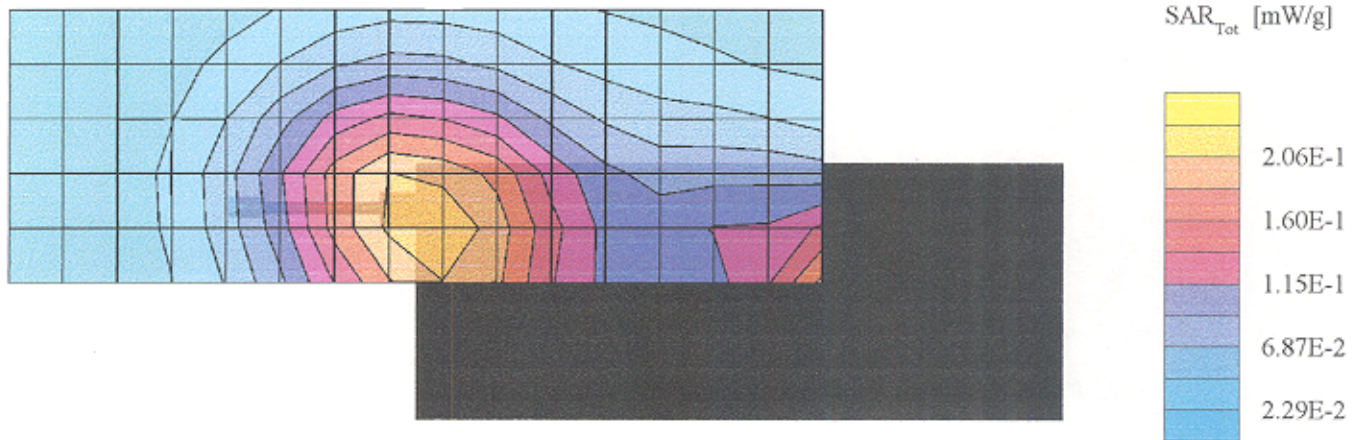
Coarse: $D_x = 18.0$, $D_y = 18.0$, $D_z = 10.0$; Powerdrift: -0.16 dB

Symbol Technologies Inc., Wireless Hand Scanner

Model Diamond PDT7532-ROX23M00, S/N ALP06157

CDPD Modulation, Maximum Transmit Power 28 dbm

Body Positioning, Channel 750 (847 MHz)



Symbol, Wireless Handset, Model PDT 7532

Generic Twin Phantom; Flat Section; Position: (90°,90°); Frequency: 900 MHz

Probe: ET3DV5 - SN1328; ConvF(5.50,5.50,5.50); Crest factor: 1.0; Muscle 850 MHz: $\sigma = 1.09$ mho/m $\epsilon_r = 56.1$ $\rho = 1.00$ g/cm³

Cubes (2): SAR (1g): 0.710 mW/g \pm 0.15 dB, SAR (10g): 0.494 mW/g \pm 0.16 dB, (Worst-case extrapolation)

Coarse: Dx = 18.0, Dy = 18.0, Dz = 10.0; Powerdrift: -0.04 dB

Symbol Technologies Inc., Wireless Hand Scanner

Model Diamond PDT7532-ROX23M00, S/N ALP06157

CDPD Modulation, Maximum Transmit Power 28 dbm

Hand Positioning, Channel 750 (847 MHz)

