

FccID: H9PNP4046

DS NetVision® Phone

Conf Num: EA99556

Original Equip.

Correspondence # 19153

Date Emailed: 5/7/01

**Question 1**

The antenna duty cycle information exhibit lists that the only antenna for the NP4046 is a 2.0 dBi Stud antenna. The SAR reports lists a 0.0 dBi antenna and lists two antennas. Please clarify and list the correct antenna and antenna gain. Provide photo's of the antennas.

**Answer:**

There are three antennas listed in the application. The "Phone stick on" antenna is used by both. I have included a revised RF Exposure table and Configuration table to reflect the declined LMA split. The table lists the maximum gain for each antenna. I have extrated the antenna photos and include them in this document.

**Question 2**

The antenna duty cycle information exhibits lists a separation distance of 2.3 cm while the SAR report lists 18.7 mm. Provide photo's of the antenna belt clip and provide photo's to indicate the proper separation distance. The SAR report must include data at the proper distance.

**Answer:**

The 18.7 mm is the thickness of the supplied belt clip. The additional distance is provided by the location of the antenna in the device. I have extracted the photo using the belt clip at the proper distance from the SAR report.

**Question 3**

To ensure RF exposure compliance, appropriate operating instructions should be provided to users to satisfy exposure requirements. Provide the proper instructions for head and body use. These instructions must include the proper separation distance. In addition, users should be informed of the specific belt clip. Please incorporate appropriate operating instructions in the manual. Please revise the manual accordingly and submit relevant pages of the manual. The instructions should indicate that it is for FCC RF exposure compliance requirements and should be placed at a location toward the front of the manual where it is obvious to the users.

**Answer:**

Please see the attached Regulatory Addendum page.



# RF Exposure Antenna Summary

Network Systems Organization

FCC ID: **H9PNP4046 EA99556** DS NetVision® Phone

Source Based

AP DC Factor: 1.000

Output Power: 145 mW Original Equip.

Remote DC Factor: 0.108

## Portable Antennas (R < 5cm)

Ant No	Model	Symbol P/N	Type	Gain (dBi)	Cable Loss (dB)	Pout (dBm)	EIRP (mW)	TR Status	Device Use
01.	Phone Stud	50-21900-043	Monopole	2.0	0.00	21.61	24.7	Tested + SAR	Hand Set
03.	Phone Stickon	50-21900-044	Dipole	2.0	0.22	21.40	23.5	Tested + SAR	Hand Set

Antenna Gain listed without cable  
TR Status refers to whether the antenna was tested. If not refer to the directed antenna test data

Duty Cycle Factors are applied to MPE and EIRP



# RF Exposure Configuration Summary

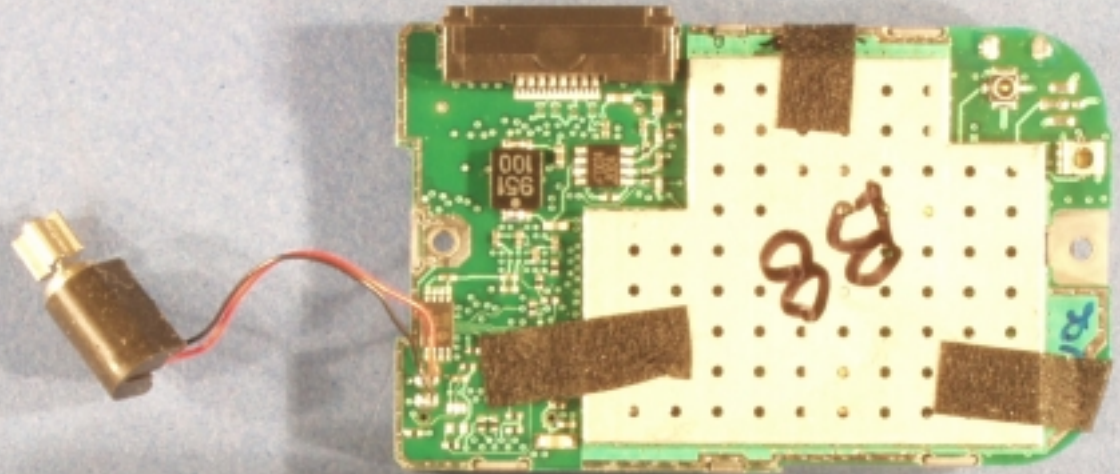
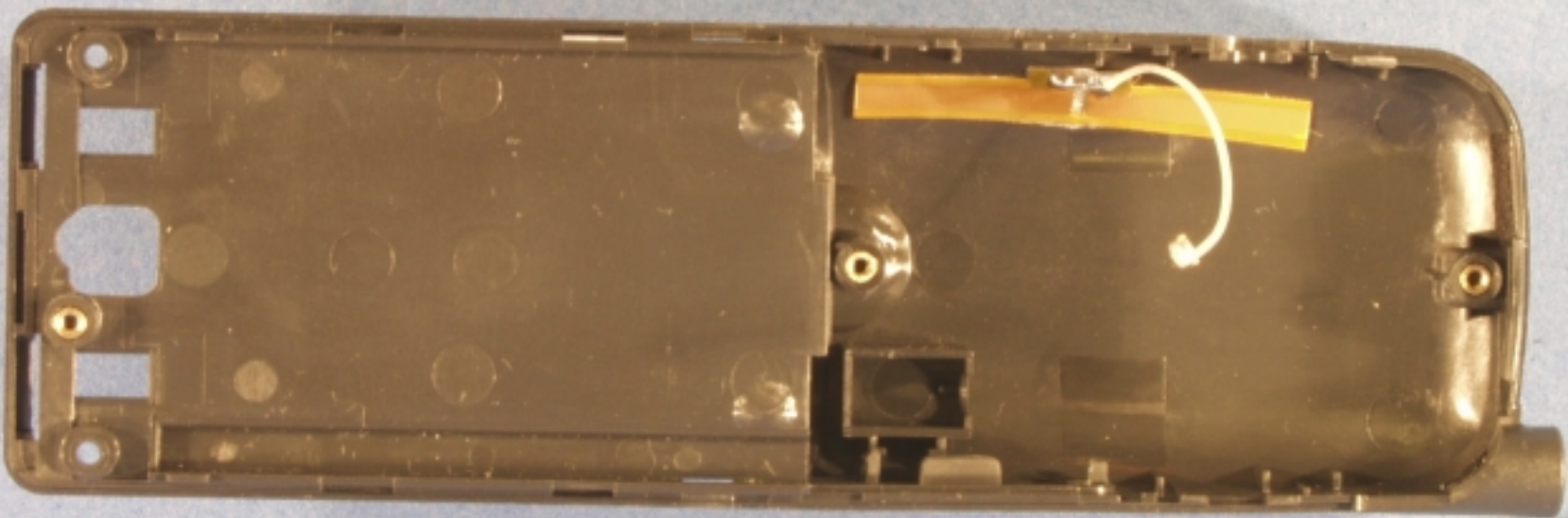
Network Systems Organization

FCC ID: **H9PNP4046 EA99556** DS NetVision® Phone

Output Power: 145 mW Original Equip.

Ant #	Antenna Model	Terminal Mfgr.	Terminal Model	Use
1	Phone Stud	Symbol	NP-4046	Hand Set
3	Phone Stickon	Symbol	NP-4046	Hand Set

5- R < 5 cm  
5+ 5 cm < R < 20 cm  
Ocp Occupational



## 2.2 Configuration Photographs (Continued)

### SAR measurement Test Setup



## **Regulatory Addendum:**

### WARNING-FCC RF EXPOSURE GUIDELINES

To satisfy FCC RF exposure compliance requirements for a portable transmitting device, this device should be used in either of three positions. Position one is with the device speaker held to the users ear canal opening, the mouthpiece in line with the users mouth, but not touching the users cheek. Position two is with the speaker held to the users ear canal opening, the mouthpiece in line with the users mouth, and touching the users cheek. Position three is with the device in the supplied pouch and suspended from the supplied clip P/N DP-CLIP-OMN on the users belt. The device antennas should generally maintain a separation distance of 2.3 cm or more from a person's head or body; except for the hands and wrists because of a higher exposure limit for extremities. This device is designed for use in a person's hands while held next to their head or slung on the belt clip. Its operating configurations generally do not support normal transmissions while it is carried in pockets or unauthorized holsters or clips next to a person's body or with chairs or other objects forcing the antenna closer to the users body than the normal free hanging position on the belt clip.

The preceding statement is presently being added to the QRG (Quick Reference Guide –User’s Manual) for the Symbol DS Phone line. This addition will be covering the model NP4046 and DP4046 NetVision ® phones.

Norm Nelson  
Symbol Technologies Inc  
6480 Via Del Oro Drive  
San Jose, CA 95119-1208  
Phone: (408) 528-2649  
Fax: (408) 528-2740  
E-mail: [norm@sj.symbol.com](mailto:norm@sj.symbol.com)